

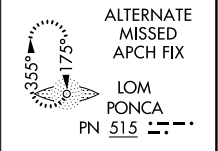
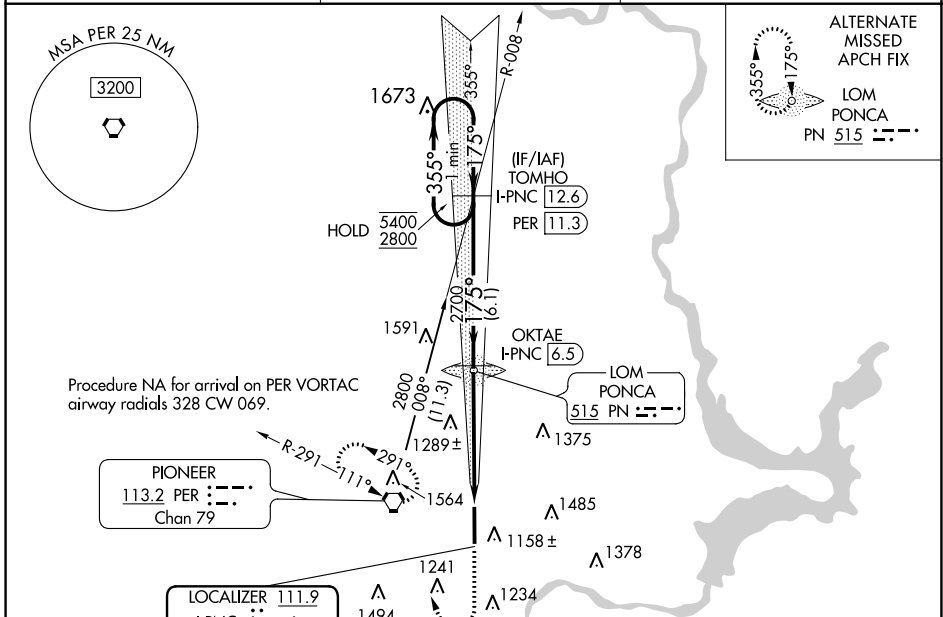
LOC/DME I-PNC 111.9 Chan 56	APP CRS 175°	Rwy Idg 7201 TDZE 1004 Apt Elev 1009
---	------------------------	---

ILS or LOC RWY 17

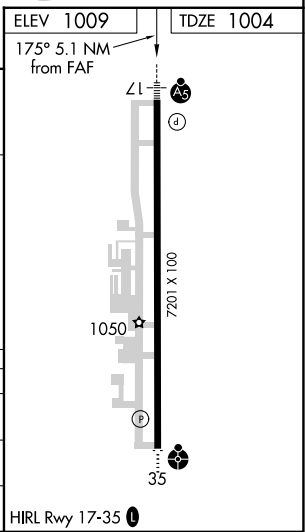
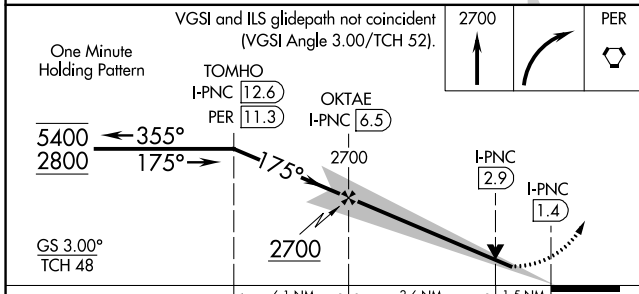
PONCA CITY RGNL (PNC)

DME required.	MALSR	MISSED APPROACH: Climb to 2700 then right turn direct PER VORTAC and hold.
<p>▼</p> <p>▲ NA For inop ALS, increase S-LOC 17 visibility Cat C/D to 1 ½ SM.</p>		

ASOS 134.075	KANSAS CITY CENTER 127.8 319.1	UNICOM 123.0 (CTAF) 0
------------------------	--	---------------------------------



ELEV 1009	TDZE 1004
-----------	-----------



CATEGORY	A	B	C	D
S-ILS 17	1204-½		200 (200-½)	
S-LOC 17	1520-½ 516 (600-½)		1520-1 516 (600-1)	
CIRCLING	1520-1 511 (600-1)	1580-1 571 (600-1)	1800-2¼ 791 (800-2¼)	1880-2¾ 871 (900-2¾)

SC-1, 22 FEB 2024 to 21 MAR 2024

SC-1, 22 FEB 2024 to 21 MAR 2024

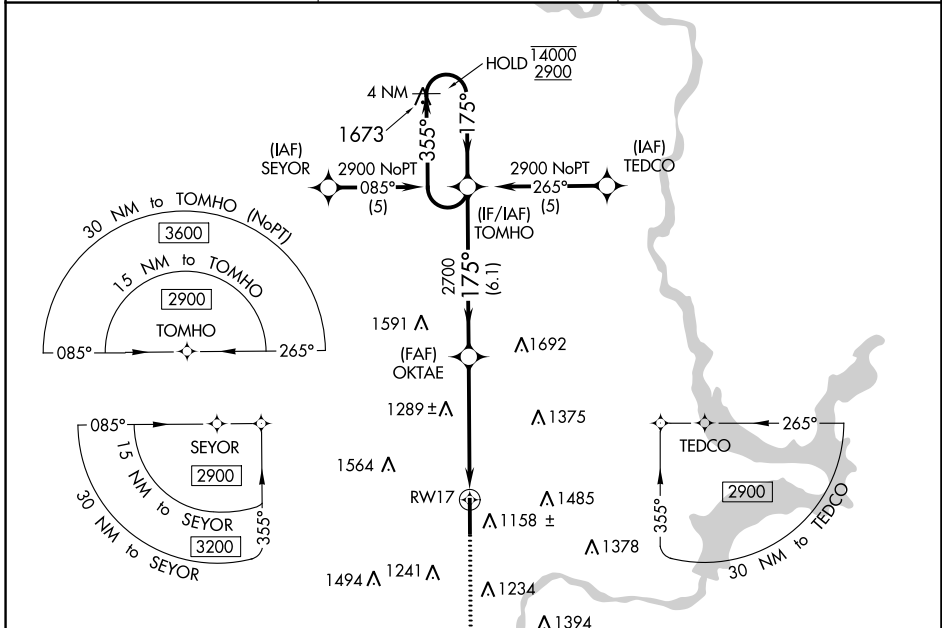
WAAS CH 50408 W17A	APP CRS 175°	Rwy Idg 7201 TDZE 1004 Apt Elev 1009
--	------------------------	---

RNAV (GPS) RWY 17

PONCA CITY RGNL (PNC)

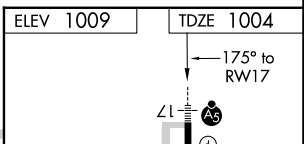
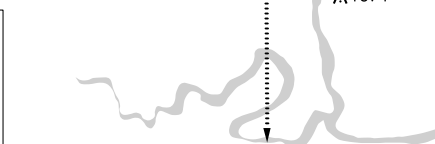
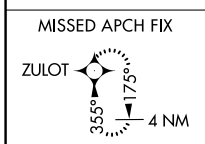
RNP APCH - GPS.	MALSR	MISSED APPROACH: Climb to 2700 direct ZULOT and hold.
<p>▼ For uncompensated Baro-VNAV systems, LNAV/VNAV NA below -16°C or above 54°C. For inop ALS increase LPV visibility all Cats to 7/8 SM.</p> <p>▲</p>		

ASOS 134.075	KANSAS CITY CENTER 127.8 319.1	UNICOM 123.0 (CTAF) 0
------------------------	--	---------------------------------



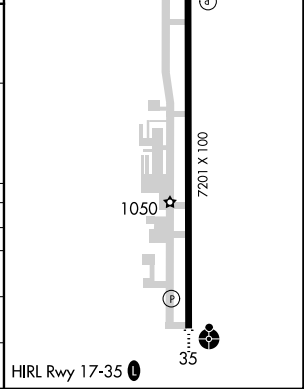
SC-1, 22 FEB 2024 to 21 MAR 2024

SC-1, 22 FEB 2024 to 21 MAR 2024



4 NM Holding Pattern	TOMHO	OKTAE	2700	1.6 NM to RWY17	ZULOT
14000	2900	2700	2700		
GP 3.00°					
TCH 48					
	6.1 NM	3.6 NM	1.6 NM		

CATEGORY	A	B	C	D
LPV DA		1279-1/2	275 (300-1/2)	
LNAV/VNAV DA		1330-1/2	326 (400-1/2)	
LNAV MDA	1540-1/2	536 (600-1/2)	1540-1	536 (600-1)
CIRCLING	1540-1 531 (600-1)	1580-1 571 (600-1)	1800-2 1/4 791 (800-2 1/4)	1880-2 3/4 871 (900-2 3/4)



WAAS CH 93808 W35A	APP CRS 355°	Rwy Idg 7201 TDZE 1008 Apt Elev 1009
--	------------------------	---

RNAV (GPS) RWY 35

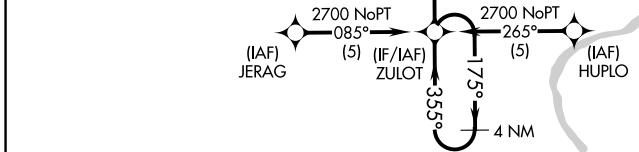
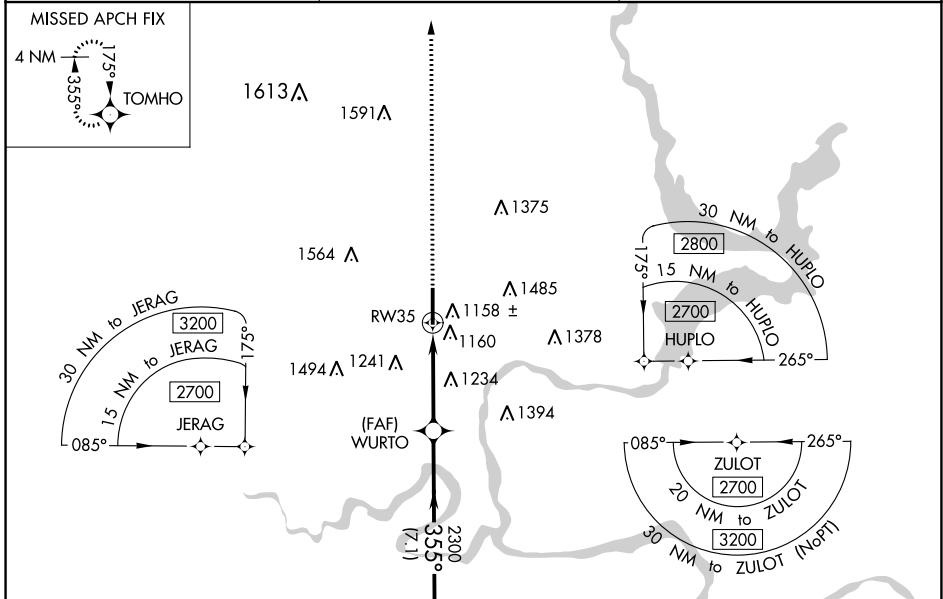
PONCA CITY RGNL (PNC)

⚠ For uncompensated Baro-VNAV systems, LNAV/VNAV NA below -17°C (2°F) or above 46°C (114°F). DME/DME RNP-0.3 NA. When local altimeter setting not received use Winfield-Arkansas City altimeter setting and increase LPV DA to 1377 feet, LNAV/VNAV DA to 1560 feet and all MDA 100 feet; increase LPV all Cats, LNAV/VNAV all Cats, LNAV Cats C and D and Circling Cats C and D visibility ¼ SM. Baro-VNAV NA when using Winfield-Arkansas City altimeter setting. Visibility reduction by helicopters NA.

ODALS

MISSED APPROACH:
Climb to 2800 direct TOMHO and hold.

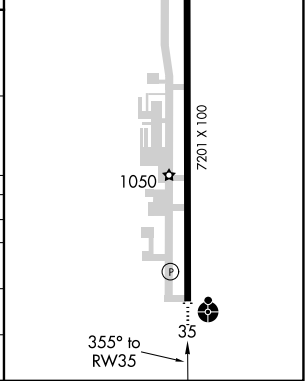
ASOS 134.075	KANSAS CITY CENTER 127.8 319.1	UNICOM 123.0 (CTAF) ①
-------------------------------	---	--



ELEV 1009	TDZE 1008
HIRL Rwy 17-35 ①	

4 NM Holding Pattern	ZULOT	2800	TOMHO
2700	355°	355°	355°
GP 3.00°	TCH 45	2300	RW35
	7.1 NM	3.9 NM	

CATEGORY	A	B	C	D
LPV DA		1295-1	287 (300-1)	
LNAV/VNAV DA		1478-1¾	470 (500-1¾)	
LNAV MDA	1540-1	532 (600-1)	1540-1½ 532 (600-1½)	1540-1¾ 532 (600-1¾)
CIRCLING	1540-1 531 (600-1)	1580-1 571 (600-1)	1800-2½ 791 (800-2½)	1880-2¾ 871 (900-2¾)



SC-1, 22 FEB 2024 to 21 MAR 2024

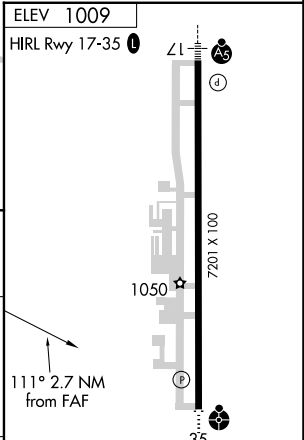
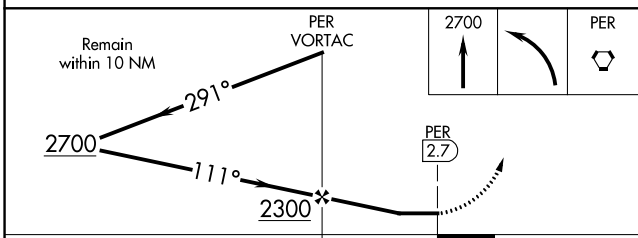
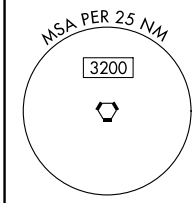
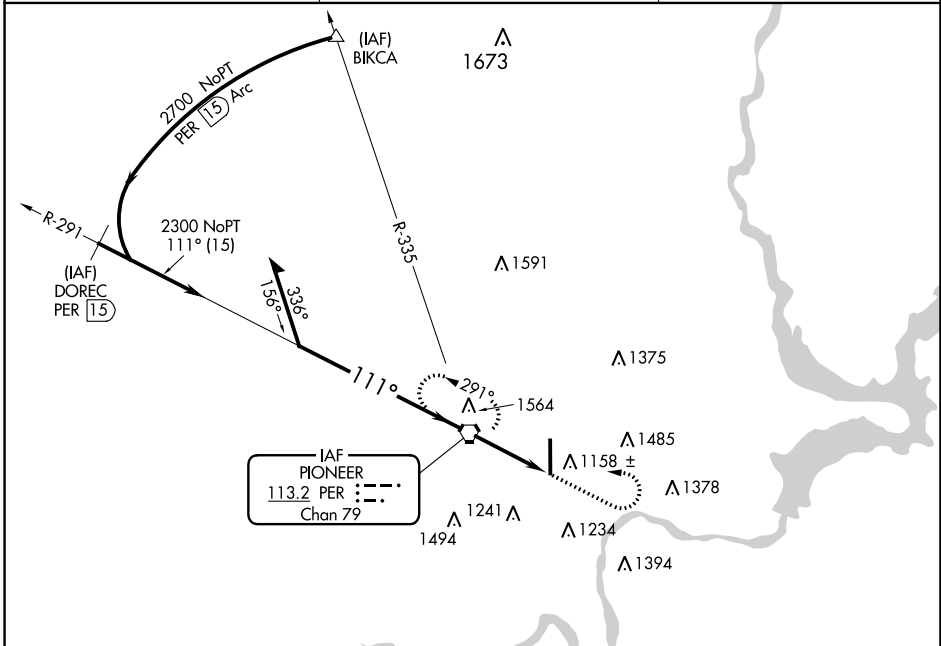
SC-1, 22 FEB 2024 to 21 MAR 2024

VORTAC PER 113.2 Chan 79	APP CRS 111°	Rwy Idg TDZE Apt Elev N/A N/A 1009
--	------------------------	--

VOR-A
PONCA CITY RGNL (PNC)

MISSED APPROACH: Climb to 2700 then left turn direct PER VORTAC and hold.

ASOS 134.075	KANSAS CITY CENTER 127.8 319.1	UNICOM 123.0 (CTAF) 0
------------------------	--	---------------------------------



CATEGORY	FAF to MAP 2.7 NM					
	A	B	C	D		
CIRCLING	1520-1 511 (600-1)	1580-1 571 (600-1)	1800-2¼ 791 (800-2¼)	1880-2¾ 871 (900-2¾)		
	Knots	60	90	120	150	180
	Min:Sec	2:42	1:48	1:21	1:05	0:54

SC-1, 22 FEB 2024 to 21 MAR 2024

SC-1, 22 FEB 2024 to 21 MAR 2024