

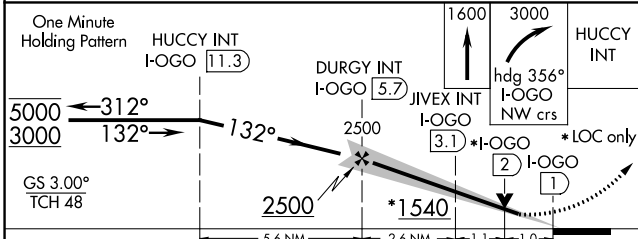
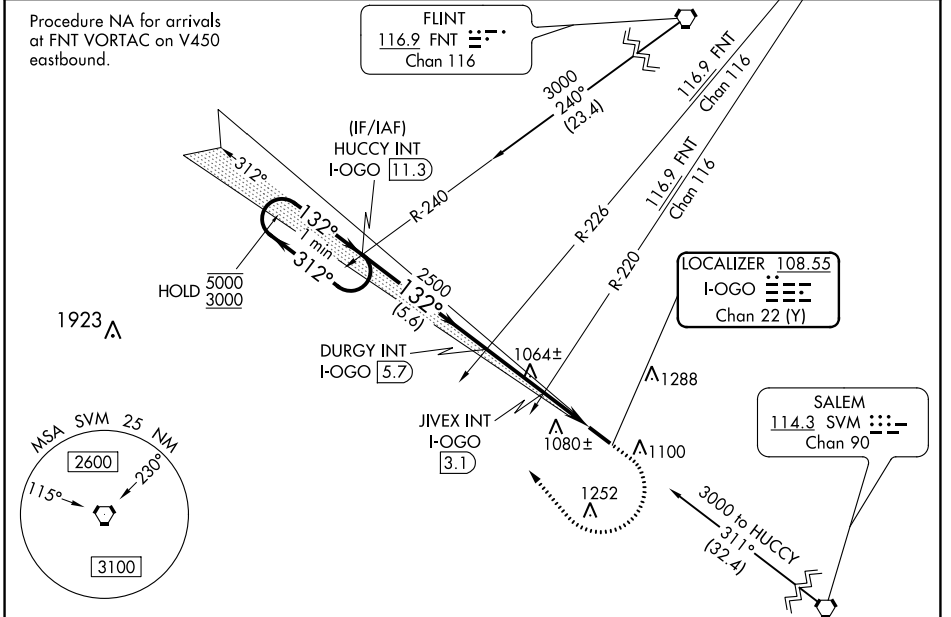
LOC/DME I-OGO 108.55 Chan 22 (Y)	APP CRS 132°	Rwy Idg 5002 TDZE 962 Apt Elev 962
--	------------------------	---

ILS or LOC RWY 13

LIVINGSTON COUNTY SPENCER J HARDY (OZW)

<p>▼ For inop ALS, increase LOC Cat C and D visibility to 1½ SM, and JIVEX fix minimums S-13 Cat C and D visibility to 1 SM.</p> <p>▲ NA</p>	MALS R	MISSED APPROACH: Climb to 1600 then climbing right turn to 3000 heading 356° and I-OGO NW course to HUCCY INT/I-OGO 11.3 DME and hold.
--	--------	--

AWOS-3 118.875	DETROIT APP CON 132.35 284.0	CLNC DEL 121.725 (GCO)	UNICOM 123.0 (CTAF) 0
--------------------------	--	----------------------------------	---------------------------------



ELEV 962	TDZE 962
<p>HIRL Rwy 13-31 0</p> <p>REIL Rwy 31 0</p> <p>FAF to MAP 4.7 NM</p>	
Knots	60 90 120 150 180
Min:Sec	4:42 3:08 2:21 1:53 1:34

CATEGORY	A	B	C	D
S-ILS 13	1162-½		200 (200-½)	
S-LOC 13	1540-½ 578 (600-½)		1540-1¼ 578 (600-1¼)	
CIRCLING	1540-1 578 (600-1)		1540-1½ 578 (600-1½)	1540-2 578 (600-2)
JIVEX FIX MINIMUMS (DUAL VOR RECEIVERS OR DME REQUIRED)				
S-LOC 13	1320-½ 358 (400-½)		1320-5/8 358 (400-5/8)	
CIRCLING	1400-1 438 (500-1)	1420-1 458 (500-1)	1420-1½ 458 (500-1½)	1520-2 558 (600-2)

EC-1, 25 FEB 2021 to 25 MAR 2021

EC-1, 25 FEB 2021 to 25 MAR 2021

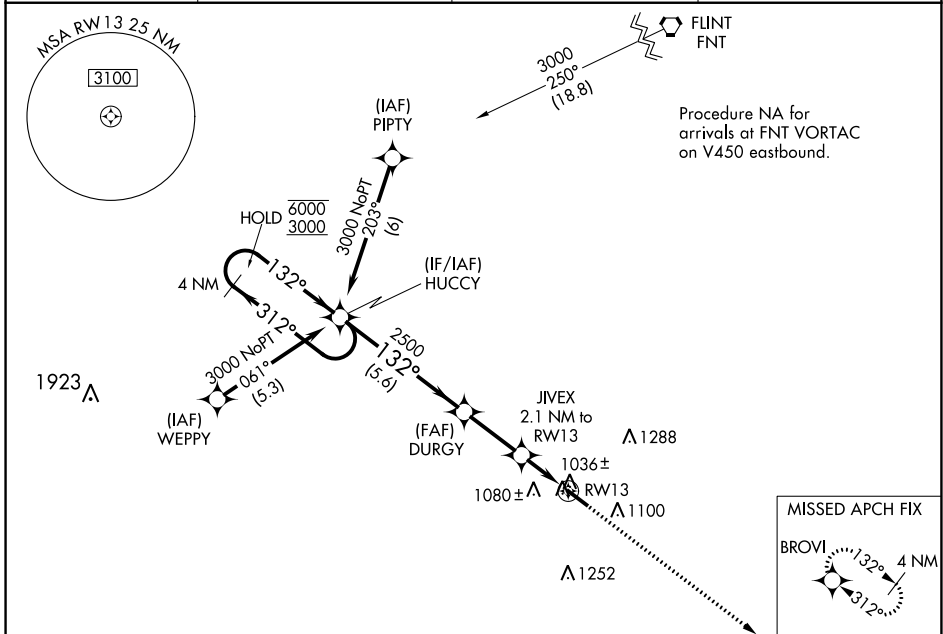
WAAS CH 69601 W13A	APP CRS 132°	Rwy Idg 5002 TDZE 962 Apt Elev 962
--	------------------------	---

RNAV (GPS) RWY 13

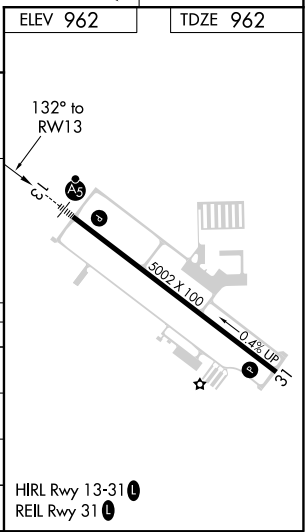
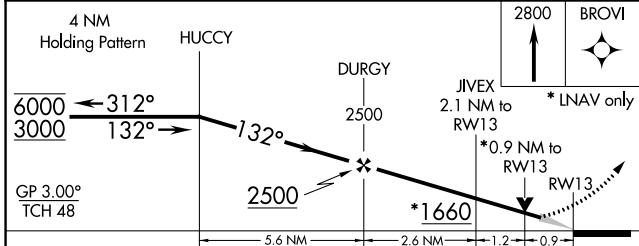
LIVINGSTON COUNTY SPENCER J HARDY (OZW)

RNP APCH.	MALS R	MISSED APPROACH: Climb to 2800 direct BROVI and hold.
<p>▼ For uncompensated Baro-VNAV systems, LNAV/VNAV NA below -16°C or above 37°C. For inop ALS, increase LNAV/VNAV all Cats visibility to ¼ SM.</p>		

AWOS-3 118.875	DETROIT APP CON 132.35 284.0	CLNC DEL 121.725 (GCO)	UNICOM 123.0 (CTAF) 0
--------------------------	--	----------------------------------	---------------------------------



ELEV 962	TDZE 962
----------	----------



CATEGORY	A	B	C	D
LPV DA		1162-½	200 (200-½)	
LNAV/VNAV DA		1212-½	250 (300-½)	
LNAV MDA		1300-½	338 (400-½)	
CIRCLING	1400-1 438 (500-1)	1420-1 458 (500-1)	1420-1½ 458 (500-1½)	1520-2 558 (600-2)

EC-1, 25 FEB 2021 to 25 MAR 2021

EC-1, 25 FEB 2021 to 25 MAR 2021

WAAS CH 99722 W31A	APP CRS 312°	Rwy Idg TDZE 943 Apt Elev 962	5002 943 962
--	------------------------	---	---

RNAV (GPS) RWY 31

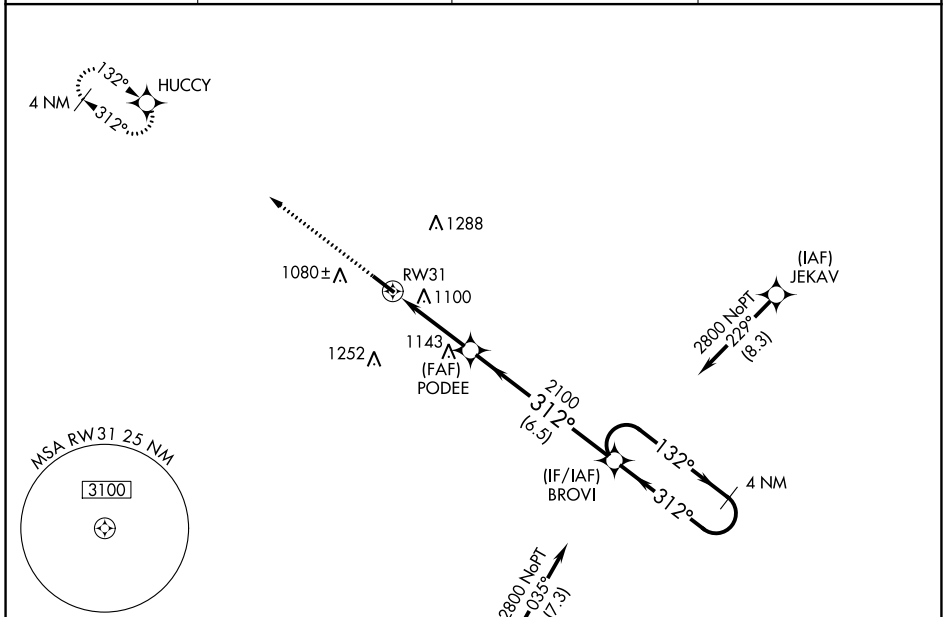
LIVINGSTON COUNTY SPENCER J HARDY (OZW)

RNP APCH.

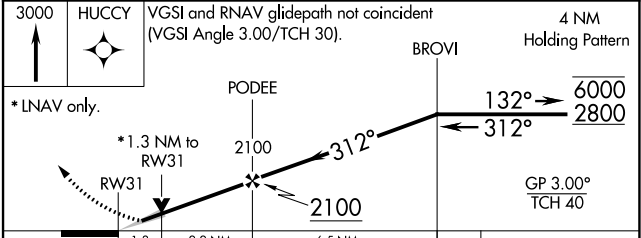
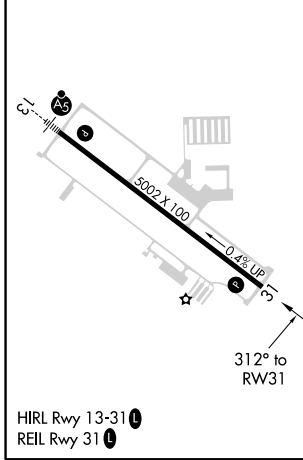
▼ For uncompensated Baro-VNAV systems, LNAV/VNAV NA below -16°C or above 54°C.

MISSED APPROACH:
Climb to 3000 direct
HUCCY and hold.

AWOS-3 118.875	DETROIT APP CON 132.35 284.0	CLNC DEL 121.725 (GCO)	UNICOM 123.0 (CTAF) 0
--------------------------	--	----------------------------------	---------------------------------



ELEV 962	TDZE 943
----------	----------



CATEGORY	A	B	C	D
LPV DA	1143-3/4		200 (200-3/4)	
LNAV/VNAV DA	1410-1 1/8		467 (500-1 1/8)	
LNAV MDA	1400-1	457 (500-1)	1400-1 3/8	457 (500-1 3/8)
CIRCLING	1400-1 438 (500-1)	1420-1 458 (500-1)	1420-1 1/2 458 (500-1 1/2)	1520-2 558 (600-2)

EC-1, 25 FEB 2021 to 25 MAR 2021

EC-1, 25 FEB 2021 to 25 MAR 2021