

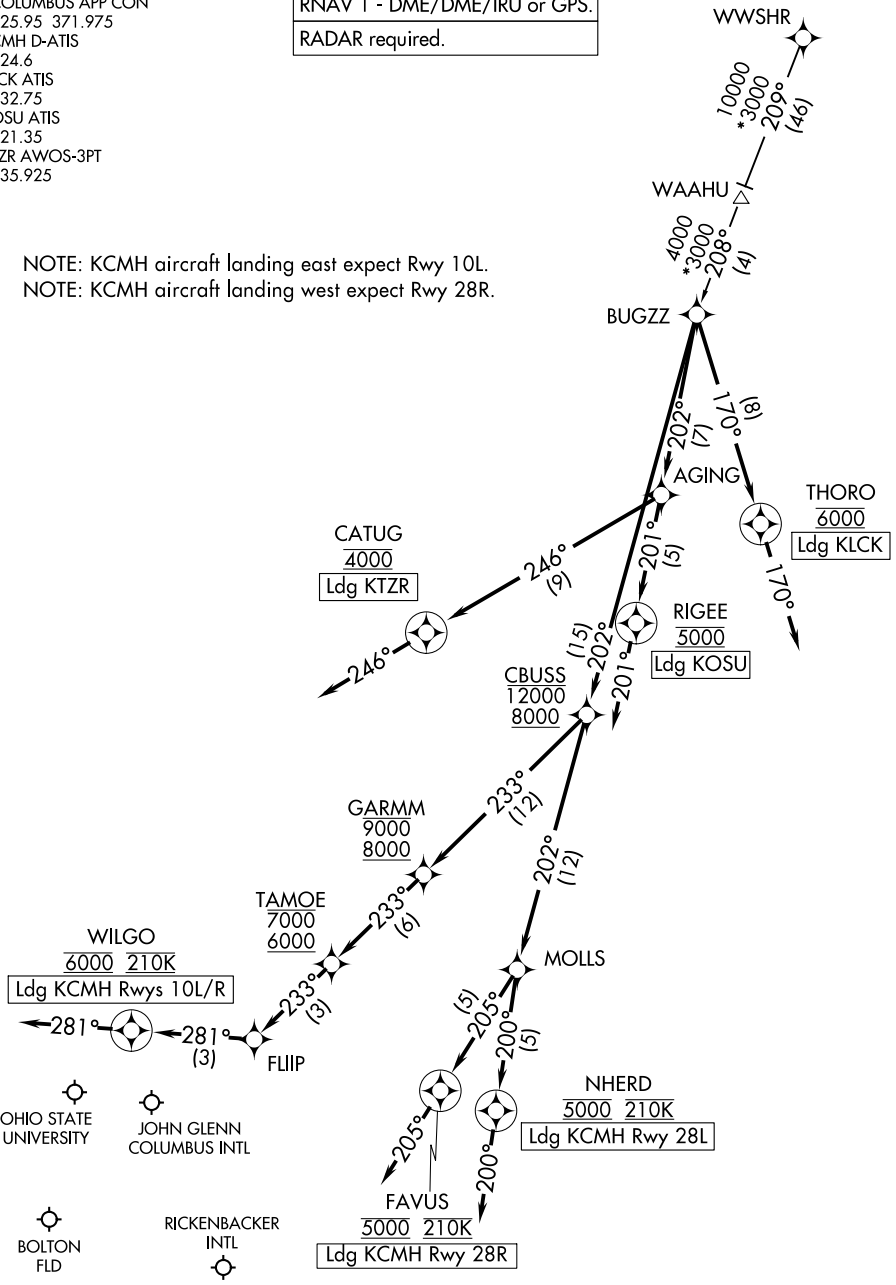
CBUSS TWO ARRIVAL (RNAV)

COLUMBUS, OHIO

COLUMBUS APP CON
 125.95 371.975
 CMH D-ATIS
 124.6
 LCK ATIS
 132.75
 OSU ATIS
 121.35
 TZR AWOS-3PT
 135.925

RNAV 1 - DME/DME/IRU or GPS.
RADAR required.

NOTE: KCMH aircraft landing east expect Rwy 10L.
 NOTE: KCMH aircraft landing west expect Rwy 28R.



EC-2, 22 FEB 2024 to 21 MAR 2024

EC-2, 22 FEB 2024 to 21 MAR 2024

(NARRATIVE ON FOLLOWING PAGE)

NOTE: Chart not to scale.

CBUSS TWO ARRIVAL (RNAV)

COLUMBUS, OHIO

CBUSS TWO ARRIVAL(RNAV)

COLUMBUS, OHIO

ARRIVAL ROUTE DESCRIPTION

WWSHR TRANSITION (WWSHR.CBUSS2)

KCMH: From BUGZZ on track 202° to cross CBUSS between 8000 and 12000.

LANDING KCMH RUNWAYS 10L/R: From CBUSS on track 233° to cross GARMM between 8000 and 9000, then on track 233° to cross TAMOE between 6000 and 7000, then on track 233° to FLIIP, then on track 281° to cross WILGO at 6000 and at 210K, then on track 281°. Expect RADAR vectors to final approach course.

LANDING KCMH RUNWAY 28L: From CBUSS on track 202° to MOLLS, then on track 200° to cross NHERD at 5000 and at 210K, then on track 200°. Expect RADAR vectors to ILS or LOC Rwy 28L approach.

LANDING KCMH RUNWAY 28R: From CBUSS on track 202° to MOLLS, then on track 205° to cross FAVUS at 5000 and at 210K, then on track 205°. Expect RADAR vectors to ILS or LOC Rwy 28R approach.

LANDING KLCK: From BUGZZ on track 170° to cross THORO at 6000, then on track 170°. Expect RADAR vectors to final approach course.

LANDING KOSU: From BUGZZ on track 202° to AGING, then on track 201° to cross RIGEE at 5000, then on track 201°. Expect RADAR vectors to final approach course.

LANDING KTZR: From BUGZZ on track 202° to AGING, then on track 246° to cross CATUG at 4000, then on track 246°. Expect RADAR vectors to final approach course.

EC-2, 22 FEB 2024 to 21 MAR 2024

EC-2, 22 FEB 2024 to 21 MAR 2024

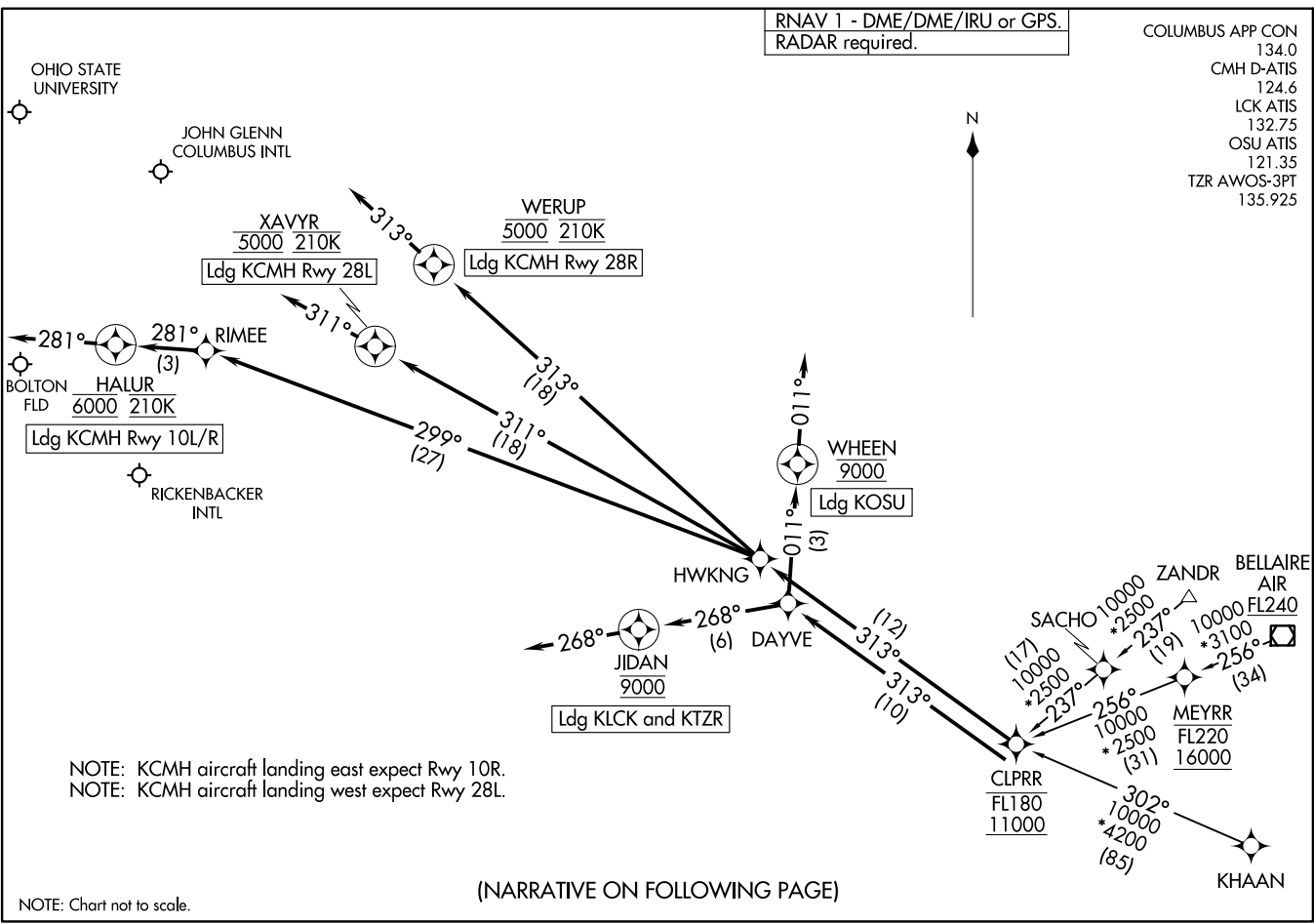
RNAV 1 - DME/DME/IRU or GPS.
RADAR required.

COLUMBUS APP CON 134.0
CMH D-ATIS 124.6
LCK ATIS 132.75
OSU ATIS 121.35
TZR AWOS-3PT 135.925

(CLPRR, CLPRR2) 231.66
CLPRR TWO ARRIVAL (RNAV)

AL-94 (FAA)

COLUMBUS, OHIO



NOTE: KCMH aircraft landing east expect Rwy 10R.
NOTE: KCMH aircraft landing west expect Rwy 28L.

(NARRATIVE ON FOLLOWING PAGE)

NOTE: Chart not to scale.

CLPRR TWO ARRIVAL (RNAV)
(CLPRR, CLPRR2) 23FEB23

COLUMBUS, OHIO

ARRIVAL ROUTE DESCRIPTION

BELLAIRE TRANSITION (AIR.CLPRR2)

KHAAN TRANSITION (KHAAN.CLPRR2)

ZANDR TRANSITION (ZANDR.CLPRR2)

KCMH: From CLPRR on track 313° to HWKNG.

LANDING KCMH RUNWAY 10L/R: From HWKNG on track 299° to RIMEE, then on track 281° to cross HALUR at 6000 and at 210K, then on track 281°. Expect RADAR vectors to final approach course.

LANDING KCMH RUNWAY 28L: From HWKNG on track 311° to cross XAVYR at 5000 and at 210K, then on track 311°. Expect RADAR vectors to ILS or LOC Rwy 28L approach.

LANDING KCMH RUNWAY 28R: From HWKNG on track 313° to cross WERUP at 5000 and at 210K, then on track 313°. Expect RADAR vectors ILS or LOC Rwy 28R approach.

LANDING KTZR/KLCK: From CLPRR on track 313° to DAYVE, then on track 268° to cross JIDAN at 9000, then on track 268°. Expect RADAR vectors to final approach course.

LANDING KOSU: From CLPRR on track 313° to DAYVE, then on track 011° to cross WHEEN at 9000, then on track 011°. Expect RADAR vectors to final approach course.

EC-2, 22 FEB 2024 to 21 MAR 2024

EC-2, 22 FEB 2024 to 21 MAR 2024

DUBLIN ONE ARRIVAL (RNAV)
(MELZZ:DUBLIN1) 12AUG21

(MELZZ:DUBLIN1) 23166
DUBLIN ONE ARRIVAL (RNAV)

AL-94 (FAA)

COLUMBUS, OHIO

RNAV 1 - DME/DME/IRU or GPS.
RADAR required.



COLUMBUS APP CON
125.95 371.975
CMH D-ATIS
124.6
LCK ATIS
132.75
OSU ATIS
121.35
TZR AWOS-3PT
135.925

BRYEN
FL230

10000
*3000
119°
(52)

FLAG CITY
FBC

9000
*2500
153°
(29)

CHDRS

ESSIE
10000

MERVN

4000
*2500
120°
(12)

VBILT
5000

TEEZE

6000 210K

Ldg KCMH Rwy
28L and Rwy 28R

IKALE

4000
*2900
081°
(12)

MELZZ

111°
(5)

Ldg KOSU

CYRAH

4000
*2500
133°
(13)

DUBLN

130°
(4)

TRLGY

9000
8000

POLRS

7000
6000

MAJGE

7000

Ldg KLCK and KTZR

WESDA

5000

ZELON

5000

TACES

101°
(3)

HELDI

5000 210K

Ldg KCMH Rwy 10R

BOLTON
FLD

MADZY

5000 210K

Ldg KCMH Rwy 10L

JOHN GLENN
COLUMBUS INTL

OHIO STATE
UNIVERSITY

RICKENBACKER
INTL

101°
(3)

JADUB
FL240

15 NM

NOTE: KCMH aircraft landing east expect Rwy 10L.
NOTE: KCMH aircraft landing west expect Rwy 28R.

NOTE: Chart not to scale.

(NARRATIVE ON FOLLOWING PAGE)

COLUMBUS, OHIO

ARRIVAL ROUTE DESCRIPTION

BRYEN TRANSITION (BRYEN.DUBLN1):

ESSIE TRANSITION (ESSIE.DUBLN1):

FLAG CITY TRANSITION (FBC.DUBLN1):

JADUB TRANSITION (JADUB.DUBLN1):

KCMH: From MELZZ on track 148° to DUBLN.

LANDING KCMH RUNWAY 10L: From DUBLN on track 186° to cross ZELON at 5000, then on track 189° to cross MADZY at 5000 and at 210K, then on track 189°. Expect RADAR vectors to ILS or LOC Rwy 10L approach.

LANDING KCMH RUNWAY 10R: From DUBLN on track 188° to cross WESDA at 5000, then on track 189° to cross HELDI at 5000 and at 210K, then on track 189°. Expect RADAR vectors to ILS or LOC Rwy 10R approach.

LANDING KCMH RUNWAY 28L/R: From DUBLN on track 130° to cross TRLGY between 8000 and 9000, then on track 131° to cross POLRS between 6000 and 7000, then on track 133° to TACES, then on track 101° to cross TEEZE at 6000 and at 210K, then on track 101°. Expect RADAR vectors to final approach course.

LANDING KTZR/KLCK: From MELZZ on track 190° to cross MAJGE at 7000, then on track 190°. Expect RADAR vectors to final approach course.

LANDING KOSU: From MELZZ on track 111° to cross VBILT at 5000, then on track 111°. Expect RADAR vectors to final approach course.

EC-2, 22 FEB 2024 to 21 MAR 2024

EC-2, 22 FEB 2024 to 21 MAR 2024

ARRIVAL ROUTE DESCRIPTION

GETTA TRANSITION (GETTA.JAKTZ2)

JUDDI TRANSITION (JUDDI.JAKTZ2)

KCMH: From JAKTZ on track 045° to RSCOT.

LANDING KCMH RUNWAY 10L: From RSCOT on track 031° to cross SHMDT at 5000, then on track 031° to WATSU, then on track 039° to cross YUKAN at 5000 and at 210K, then on track 039°. Expect RNAV (RNP) Z Rwy 10L or RADAR vectors to ILS or LOC RWY 10L approach.

LANDING KCMH RUNWAY 10R: From RSCOT on track 031° to cross SHMDT at 5000, then on track 031° to WATSU, then on track 044° to cross HANTI at 5000 and at 210K, then on track 044°. Expect RNAV (RNP) Z Rwy 10R or RADAR vectors to ILS or LOC Rwy 10R approach.

LANDING KCMH RUNWAY 28L/R: From RSCOT on track 063° to OBETZ, then on track 063° to cross ELUPY between 8000 and 9000, then on track 063° to cross EDWIB at or above 7000, then on track 063° to GAGBE, then on track 101° to cross JESCE at 6000 and at 210K, then on track 101°. Expect RADAR vectors to final approach course.

LANDING KLCK: From JAKTZ on track 080° to cross PAAPP at 10000, then on track 080°. Expect RADAR vectors to final approach course.

LANDING KOSU: From JAKTZ on track 020° to cross RIBLE at 10000, then on track 020°. Expect RADAR vectors to final approach course.

EC-2, 22 FEB 2024 to 21 MAR 2024

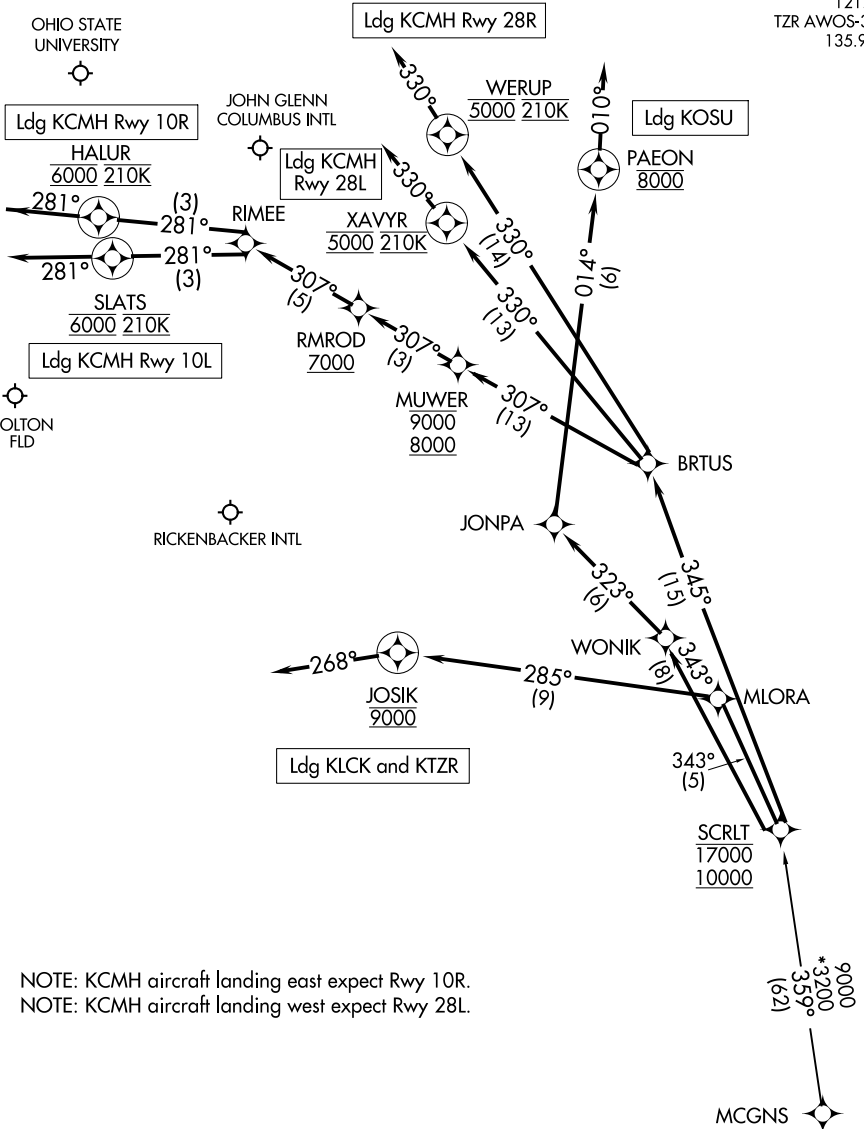
EC-2, 22 FEB 2024 to 21 MAR 2024

SCRLT ONE ARRIVAL (RNAV)

COLUMBUS, OHIO

RNAV 1 - DME/DME/IRU or GPS.
RADAR required.

COLUMBUS APP CON 134.0
 CMH D-ATIS 124.6
 LCK ATIS 132.75
 OSU ATIS 121.35
 TZR AWOS-3PT 135.925



EC-2, 22 FEB 2024 to 21 MAR 2024

EC-2, 22 FEB 2024 to 21 MAR 2024

NOTE: KCMH aircraft landing east expect Rwy 10R.
 NOTE: KCMH aircraft landing west expect Rwy 28L.

(NARRATIVE ON FOLLOWING PAGE)

NOTE: Chart not to scale.

SCRLT ONE ARRIVAL (RNAV)

COLUMBUS, OHIO

SCRLT ONE ARRIVAL (RNAV)

COLUMBUS, OHIO

ARRIVAL ROUTE DESCRIPTION

MCGNS TRANSITION (MCGNS.SCRLT1)

KCMH: from SCRLT on track 345° to BRTUS.

LANDING KCMH RUNWAY 10L: From BRTUS on track 307° to cross MUWER between 8000 and 9000, then on track 307° to cross RMROD at or above 7000, then on track 307° to RIMEE, then on track 281° to cross SLATS at 6000 and at 210K, then on track 281°. Expect RADAR vectors to final approach course.

LANDING KCMH RUNWAY 10R: From BRTUS on track 307° to cross MUWER between 8000 and 9000, then on track 307° to cross RMROD at or above 7000, then on track 307° to RIMEE, then on track 281° to cross HALUR at 6000 and at 210K, then on track 281°. Expect RADAR vectors to final approach course.

LANDING KCMH RUNWAY 28L: From BRTUS on track 330° to cross XAVYR at 5000 and at 210K, then on track 330°. Expect RADAR vectors to ILS or LOC Rwy 28L approach.

LANDING KCMH RUNWAY 28R: From BRTUS on track 330° to cross WERUP at 5000 and at 210K, then on track 330°. Expect RADAR vectors to ILS or LOC Rwy 28R approach.

LANDING KTZR/KLCK: From SCRLT on track 343° to MLORA, then on track 285° to cross JOSIK at 9000, then on track 268°. Expect RADAR vectors to final approach course.

LANDING KOSU: From SCRLT on track 343° to WONIK, then on track 323° to JONPA, then on track 014° cross PAEON at 8000, then on track 010°. Expect RADAR vectors to final approach course.

EC-2, 22 FEB 2024 to 21 MAR 2024

EC-2, 22 FEB 2024 to 21 MAR 2024