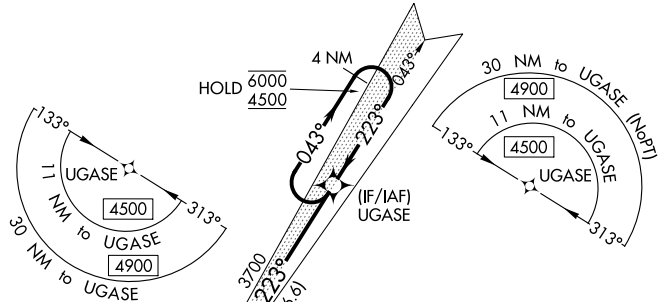


LOC I-OLE 109.3	APP CRS 223°	Rwy Idg TDZE Apt Elev	4500 2132 2135
---------------------------	------------------------	-----------------------------	---

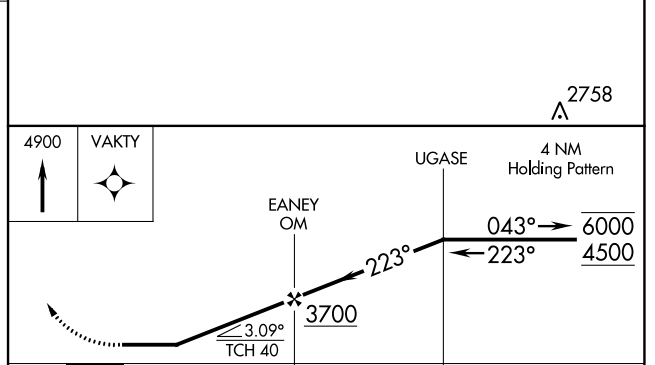
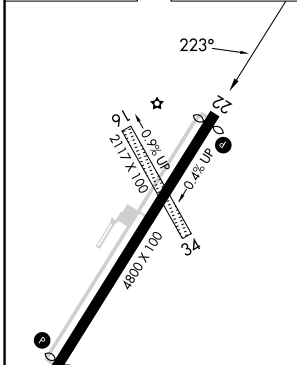
LOC RWY 22

CATTARAUGUS COUNTY-OLEAN (OLE)

RNAV APCH-GPS.		MISSED APPROACH: Climb to 4900 direct VAKTY and hold.
<p>▼ Circling NA to Rwys 16 and 34. ▲ NA When VGSI inop, Straight-in/Circling Rwy 22 procedure NA at night.</p>		
AWOS-3 118.375	CLEVELAND CENTER 124.325 353.85	UNICOM 122.8 (CTAF) 0



ELEV 2135	D	TDZE 2132
-----------	----------	-----------



HIRL Rwy 4-22		REIL Rwys 4 and 22	
FAF to MAP 4.7 NM			
Knots	60	90	120 150 180
Min:Sec	4:42	3:08	2:21 1:53 1:34
C CIRCLING	2620-1	485 (500-1)	2680-1½ 2720-2
			545 (600-1½) 585 (600-2)

NE-2, 22 FEB 2024 to 21 MAR 2024

NE-2, 22 FEB 2024 to 21 MAR 2024

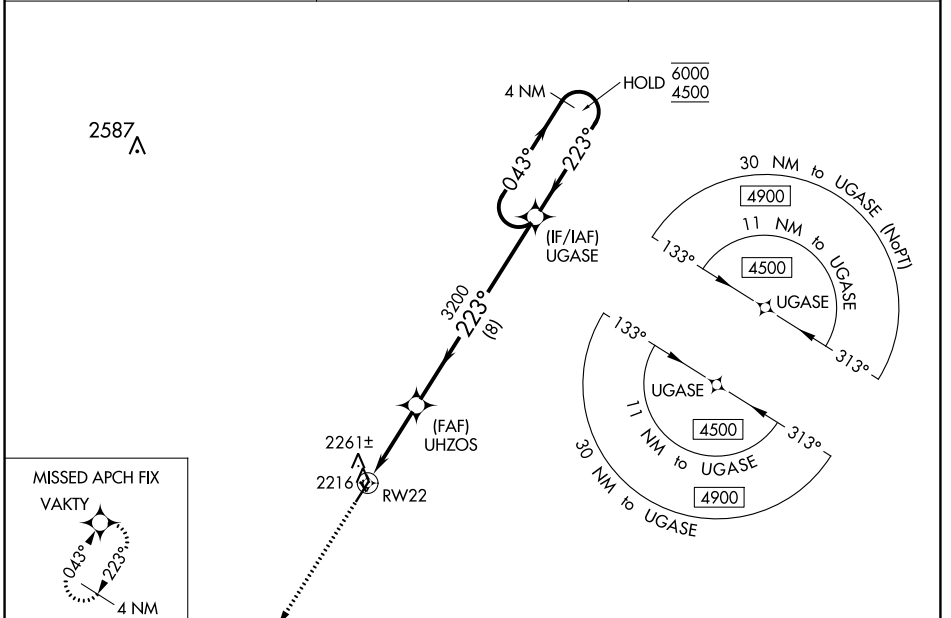
WAAS CH 99401 W22A	APP CRS 223°	Rwy Idg TDZE Apt Elev	4500 2132 2135
--	------------------------	-----------------------------	---

RNAV (GPS) RWY 22

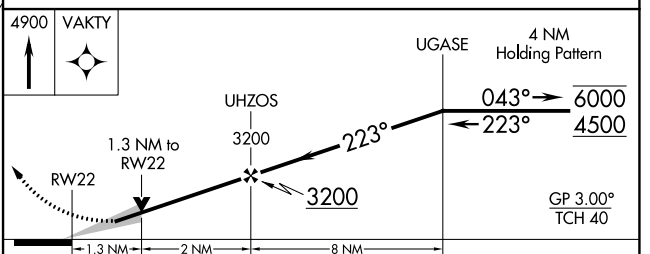
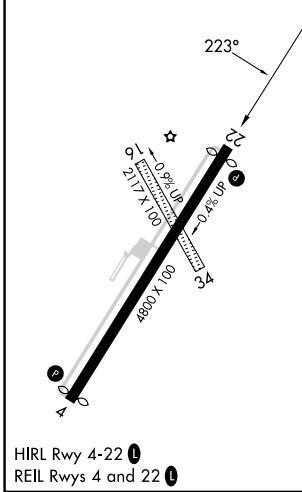
CATTARAUGUS COUNTY-OLEAN (OLE)

RNP APCH-GPS.		MISSED APPROACH: Climb to 4900 direct VAKTY and hold.
<p>⚠ Circling NA to Rwys 16 and 34. For uncompensated Baro-VNAV systems, LNAV/VNAV NA below -19°C or above 54°C. When VGS1 inop, Straight-in/Circling Rwy 22 procedure NA at night.</p>		
AWOS-3 118.375	CLEVELAND CENTER 124.325 353.85	UNICOM 122.8 (CTAF) ①

2587 Δ



ELEV 2135	D	TDZE 2132
-----------	----------	-----------



CATEGORY	A	B	C	D
LPV DA		2382-3/4	250 (300-3/4)	
LNAV/VNAV DA		2569-1 1/4	437 (500-1 1/4)	
LNAV MDA	2560-1	428 (500-1)	2560-1 1/4	428 (500-1 1/4)
C CIRCLING	2620-1	485 (500-1)	2680-1 1/2 545 (600-1 1/2)	2720-2 585 (600-2)

NE-2, 22 FEB 2024 to 21 MAR 2024

NE-2, 22 FEB 2024 to 21 MAR 2024

WAAS CH 53401 W04A	APP CRS 043°	Rwy Idg TDZE Apt Elev	4500 2132 2135
--	------------------------	-----------------------------	---

RNAV (GPS) RWY 4

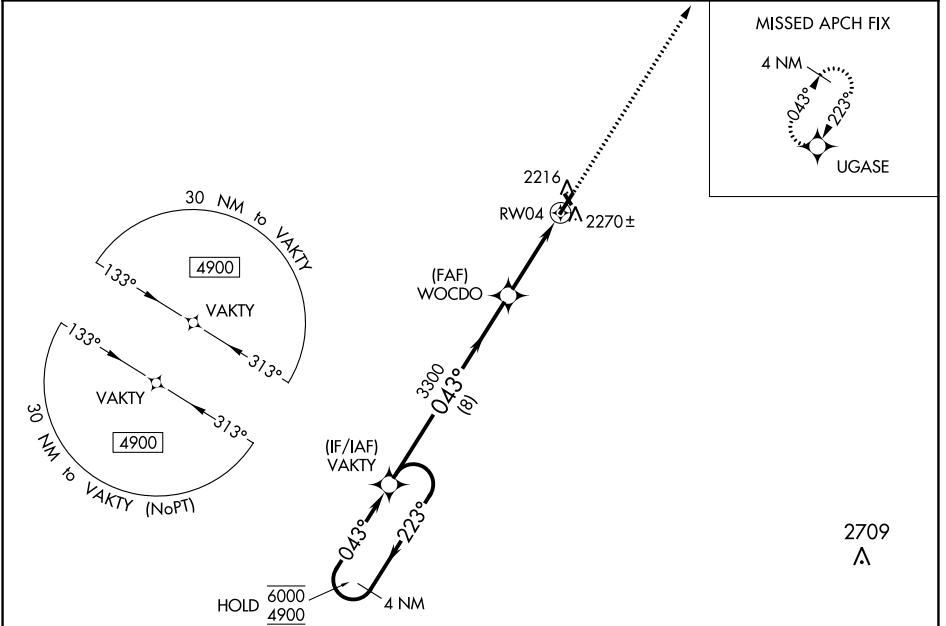
CATTARAUGUS COUNTY-OLEAN (OLE)

RNP APCH-GPS.

⚠ Circling NA to Rwys 16 and 34. Rwy 4 helicopter visibility reduction below 3/4 SM NA. When VGSI inop, Circling Rwy 22 NA at night. For uncompensated Baro-VNAV systems, LNAV/VNAV NA below -19°C or above 54°C.

MISSED APPROACH: Climb to 4500 direct UGASE and hold.

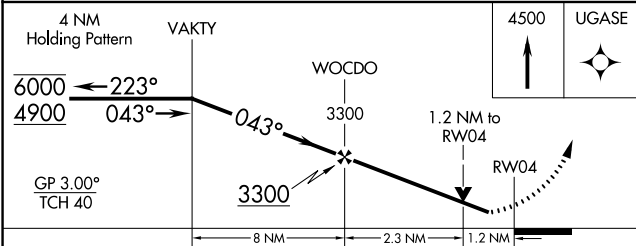
AWOS-3 118.375	CLEVELAND CENTER 124.325 353.85	UNICOM 122.8 (CTAF)
--------------------------	---	-------------------------------



NE-2, 22 FEB 2024 to 21 MAR 2024

NE-2, 22 FEB 2024 to 21 MAR 2024

ELEV 2135	D	TDZE 2132
-----------	---	-----------



CATEGORY	A	B	C	D
LPV DA		2382-3/4	250 (300-3/4)	
LNAV/VNAV DA		2549-1 1/8	417 (500-1 1/8)	
LNAV MDA	2560-1	428 (500-1)	2560-1 1/4	428 (500-1 1/4)
CIRCLING	2620-1	485 (500-1)	2680-1 1/2	2720-2
			545 (600-1 1/2)	585 (600-2)

