

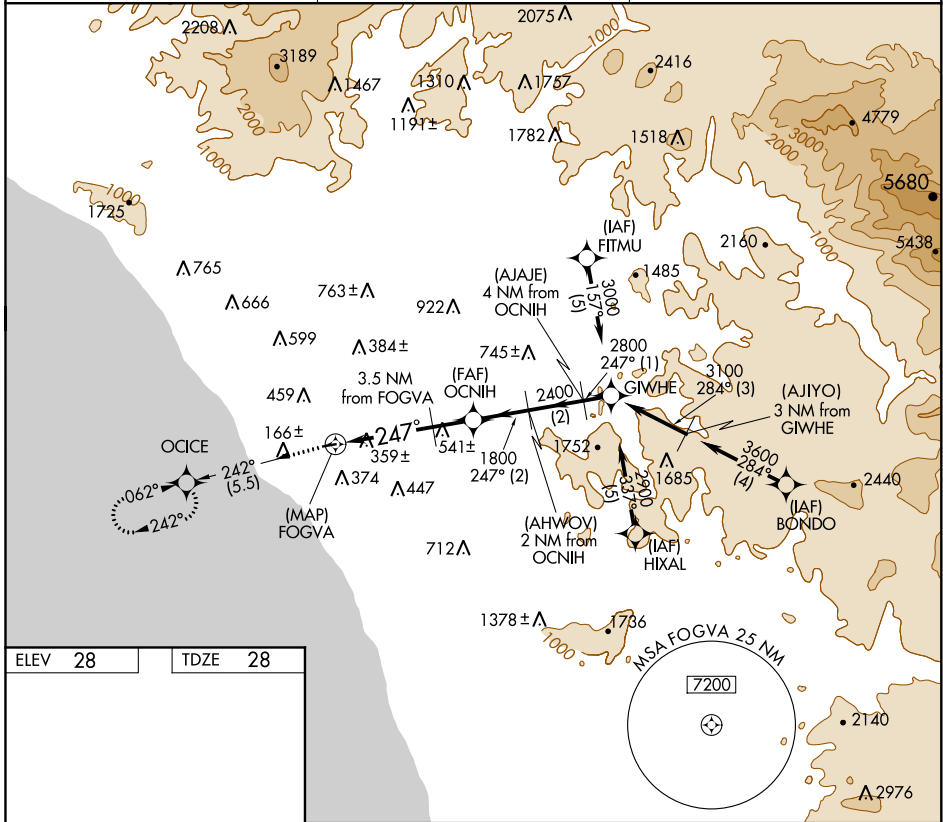
APP CRS <b>247°</b>	Rwy Idg <b>2712</b>
	TDZE <b>28</b>
	Apt Elev <b>28</b>

# GPS RWY 24

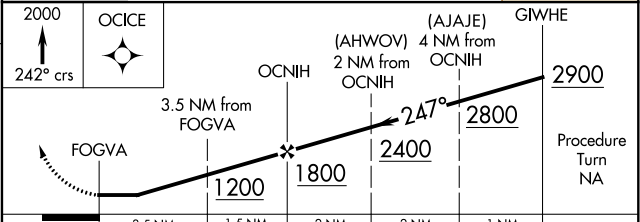
BOB MAXWELL MEML AIRFIELD (OKB)

NA Night Landing: Rwy 6 NA.	MISSED APPROACH: Climb to 2000 via 242° course to OCICE WP and hold.
-----------------------------	--

ASOS <b>127.8</b>	SOCAL APP CON <b>127.3 323.0</b>	UNICOM <b>122.725 (CTAF) 0</b>
----------------------	-------------------------------------	-----------------------------------



ELEV 28	TDZE 28
MIRL Rwy 6-24 REIL Rwy 24	



CATEGORY	A	B	C	D
S-24	740-1	712 (800-1)		NA
CIRCLING	880-1 852 (900-1)	880-1½ 852 (900-1½)		NA

SW-3, 07 OCT 2021 to 04 NOV 2021

SW-3, 07 OCT 2021 to 04 NOV 2021

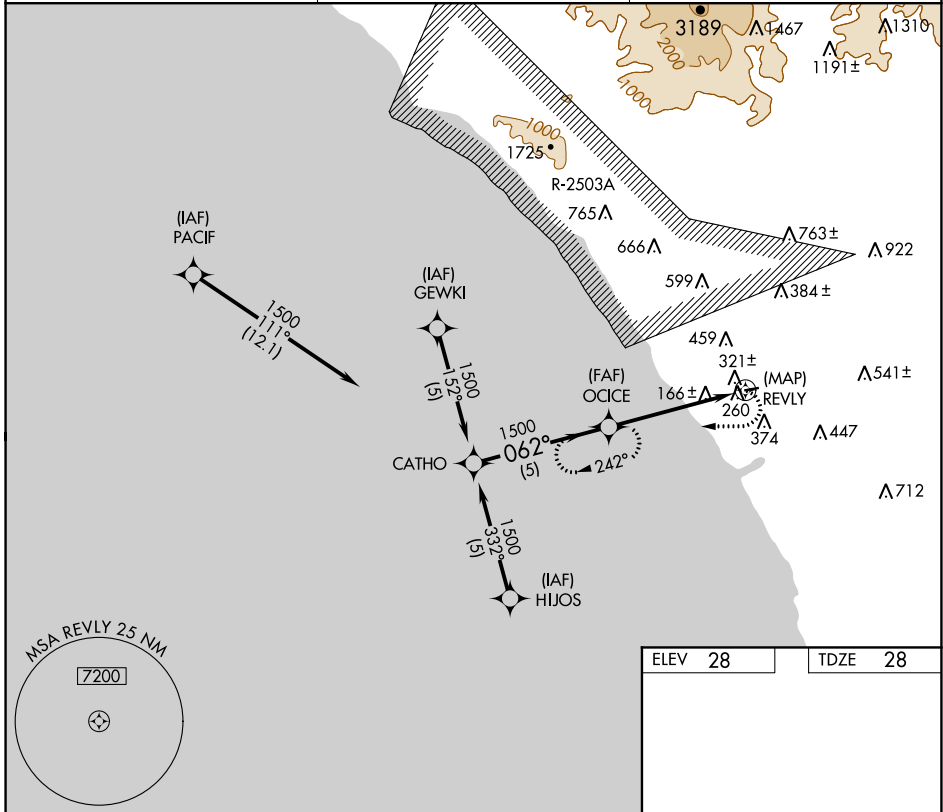
APP CRS <b>062°</b>	Rwy Idg <b>2712</b> TDZE <b>28</b> Apt Elev <b>28</b>
------------------------	---

# GPS RWY 6

BOB MAXWELL MEML AIRFIELD (OKB)

Night Landing: Rwy 6 NA. Helicopter visibility reduction below 1 SM NA.	MISSED APPROACH: Climbing right turn to 2000 direct OCICE WP and hold.
--	--

ASOS <b>127.8</b>	SOCAL APP CON <b>127.3 323.0</b>	UNICOM <b>122.725 (CTAF)</b>
----------------------	-------------------------------------	---------------------------------



SW-3, 07 OCT 2021 to 04 NOV 2021

SW-3, 07 OCT 2021 to 04 NOV 2021

CATHO	OCICE	REVLY	2000	OCICE
1500	1500			
Procedure Turn NA				
5 NM		5.1 NM		
CATEGORY	A	B	C	D
S-6	720-1	692 (700-1)	NA	
CIRCLING	880-1 852 (900-1)	880-1¼ 852 (900-1¼)	NA	

ELEV 28	TDZE 28
---------	---------

062° to REVLY

MIRL Rwy 6-24

REIL Rwy 24

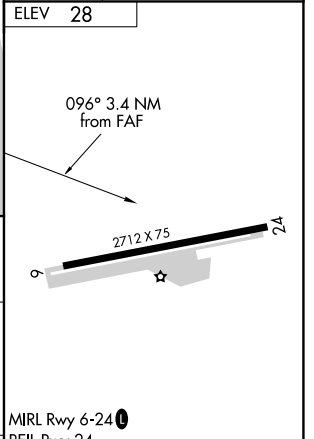
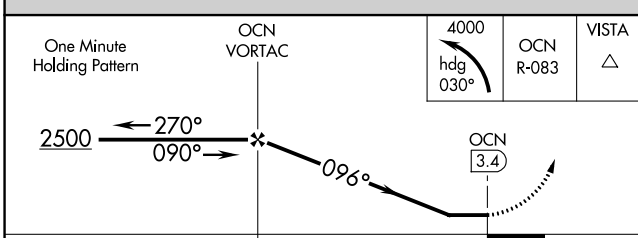
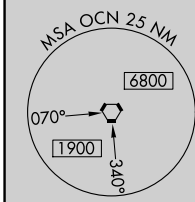
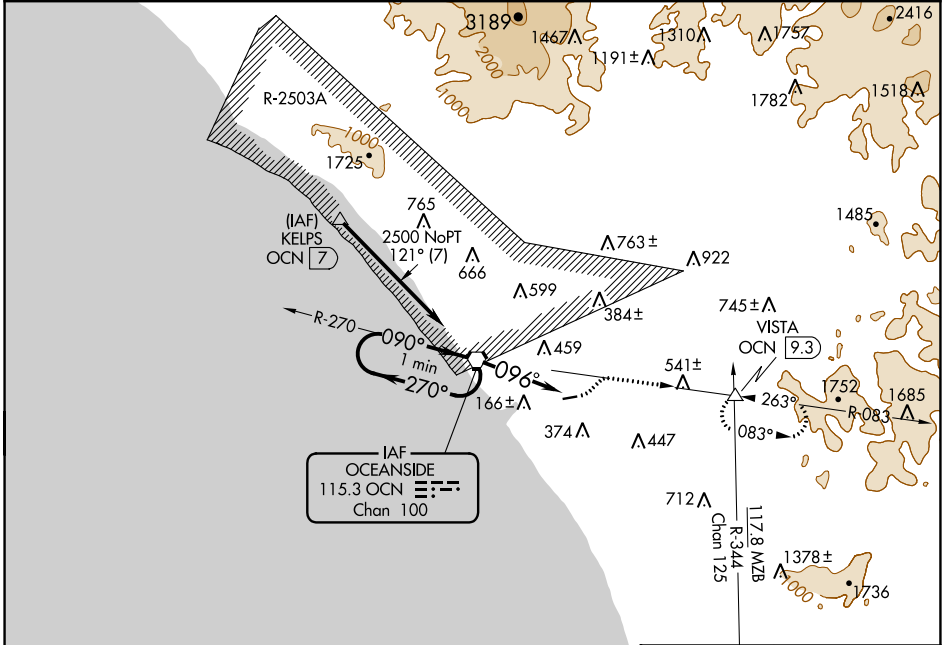
VORTAC OCN <b>115.3</b> Chan <b>100</b>	APP CRS <b>096°</b>	Rwy Idg TDZE Apt Elev <b>N/A</b> <b>N/A</b> <b>28</b>
---	------------------------	--

# VOR-A

BOB MAXWELL MEML AIRFIELD (OKB)

<p><b>▼</b> Helicopter visibility reduction below 1 SM NA. <b>▲</b> Night Landing: Rwy 6 NA.</p>	<p>MISSED APPROACH: Climbing left turn to 4000 via heading 030° and OCN R-083 to VISTA INT/OCN 9.3 DME and hold.</p>
--	--

ASOS <b>127.8</b>	SOCAL APP CON <b>127.3 323.0</b>	UNICOM <b>122.725 (CTAF)</b> <b>📻</b>
----------------------	-------------------------------------	--



CATEGORY	A	B	C	D	FAF to MAP 3.4 NM												
CIRCLING	1140-1¼ 1112 (1200-1¼)	1140-1½ 1112 (1200-1½)	NA		<table border="1"> <tr> <td>Knots</td> <td>60</td> <td>90</td> <td>120</td> <td>150</td> <td>180</td> </tr> <tr> <td>Min:Sec</td> <td>3:24</td> <td>2:16</td> <td>1:42</td> <td>1:21</td> <td>1:08</td> </tr> </table>	Knots	60	90	120	150	180	Min:Sec	3:24	2:16	1:42	1:21	1:08
Knots	60	90	120	150	180												
Min:Sec	3:24	2:16	1:42	1:21	1:08												

# VOR-A

SW-3, 07 OCT 2021 to 04 NOV 2021

SW-3, 07 OCT 2021 to 04 NOV 2021