

HI-TACAN Z RWY 24R

MIRAMAR MCAS (JOE FOSS FLD) (KNKK)

TACAN NKX Chom 33	APCH CRS 247°	Rwy Idg 24R	12,000 24L	8001	AL-903 (USN)
		TDZE Elev	24R	475 24L	477

▲ When AIS Hoop, increase CAT CDE vis to 1 1/2 miles.
 ** CAT E circling not authorized S of Rwy 6R-24L.

ALSF-I


MISSPED APPROACH: Climb to 1500, then climbing right turn to 2000, via NKX TACAN R-003 to HUKVO. Arc NE of NKX via 1.6 mile arc to WARNT and hold. Cross R-323 at 3000 mandatory, cross HUKVO at 6000 mandatory.

ATIS *	SOCAL APP CON	FOSS TOWER * 0	GND CON	CINC DEL	ASR/ LA CENTER PAR
133.475 352.0	132.2 269.1	135.2 298.925	128.625 307.325	125.975 254.925	291.7

Knots	60	120	180	240	300	360
V/Minfpm	275	550	825	1100	1375	1650

OCEANSIDE
 115.3 OCN Chom 100

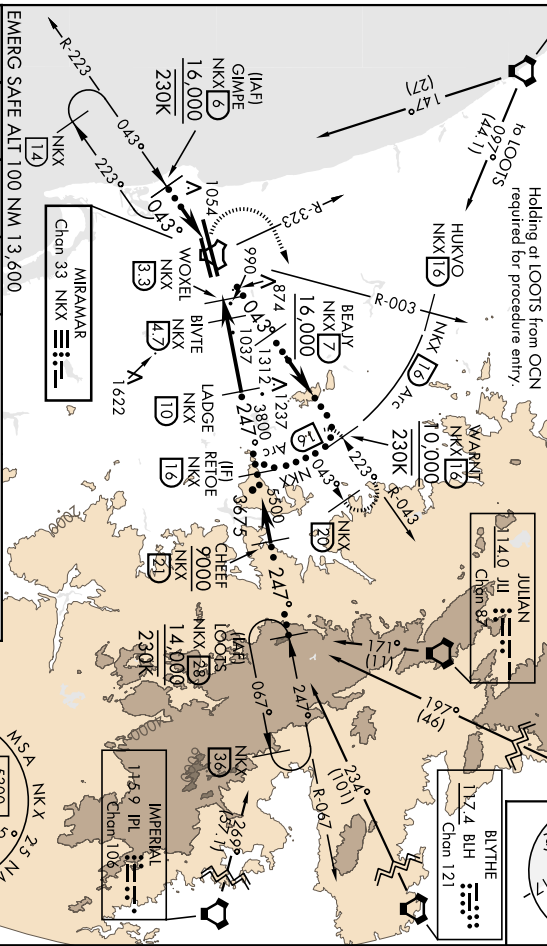
Holding at LOOTS from OCN required for procedure entry.



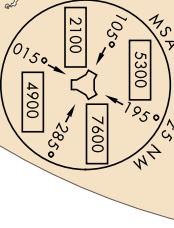
BUTHE
 11Z4 BHH Chom 121

JULIAN
 114.0 JII Chom 87

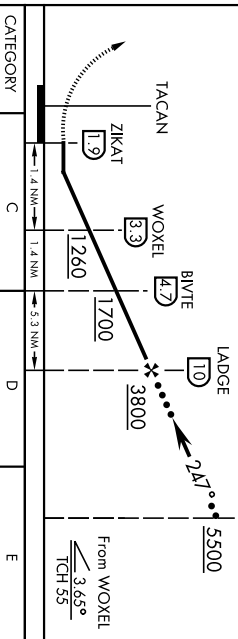
THEBVAL
 116.2 TRM Chom 109



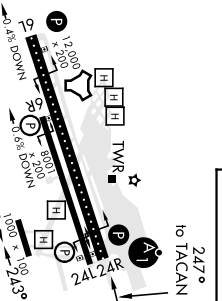
EMERG SAFE ALT 100 NM 13,600	gross 7000	gross HUKVO NKX 12	gross 6000
1500	NKX R-323 3000	HUKVO NKX 12	NKX R-003 3000



ELEV	477
TDZE 24R	475
TDZE 24L	477



CATEGORY	C	D	E
S-24R *	1140-1 1/2	665 (700-1 1/2)	
SIDE-STEP 24L	1140-1 1/2	663 (700-1 1/2)	1140-2 1/2
CIRCLING **	1140-1 1/2	663 (700-1 1/2)	1360-3
	663 (700-1 1/2)	703 (800-2 1/4)	883 (900-3)



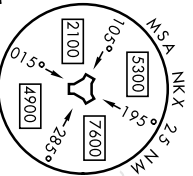
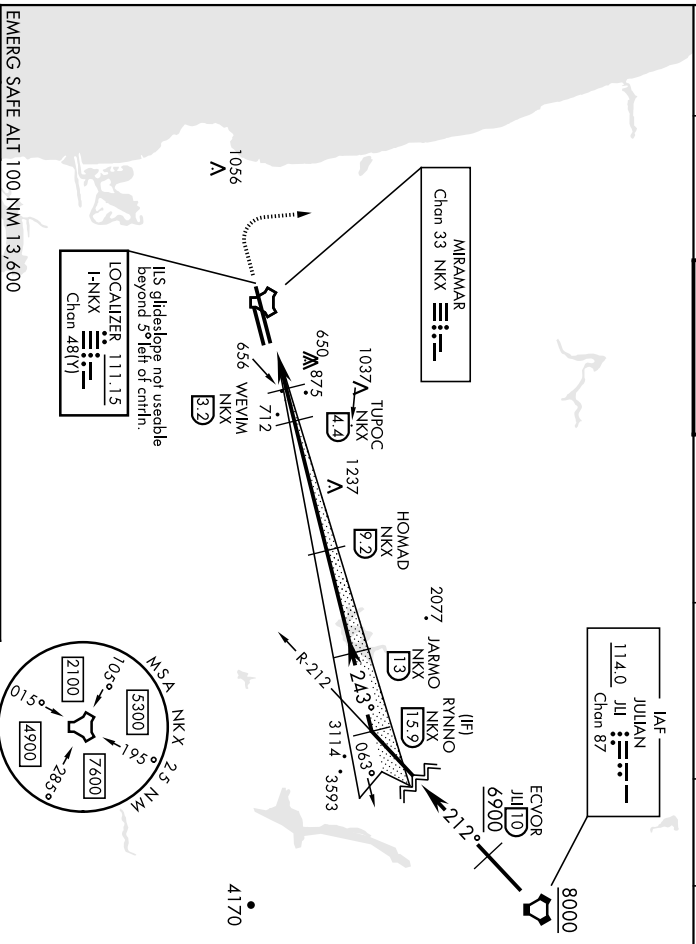
SAN DIEGO, CALIFORNIA 32°52N-117°09'W MIRAMAR MCAS (JOE FOSS FLD) (KNKK)
 Orig ZTJAN22

HI-TACAN Z RWY 24R

ILS Y or LOC/DME Y RWY 24R

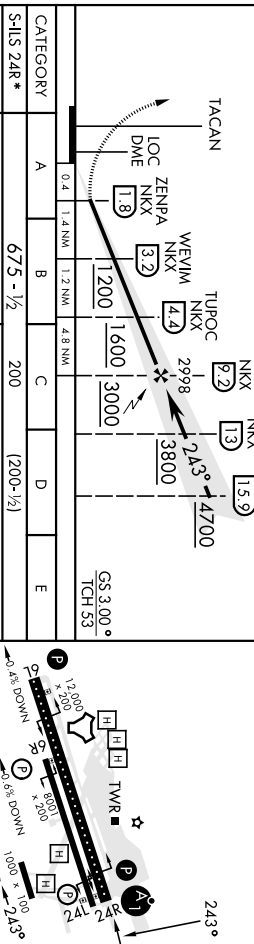
MIRAMAR MCAS (JOE FOSS FLD) (KNKX)

LOC/DME-ENKX 111.15 Chan 48(Y)	APCH CRS 243°	Rwy Idg 8001	24R 12,000	GND CON 128,625	CINC DEL 125,975	LA CENTER 291.7	ASR/ PAR
		TDZE 477	475 477	307,325	234,325	291.7	
		Appt Elev 477	477				
TACAN or RADAR required.				MISSED APPROACH: Climb to 1500, then climbing right turn to 3000 via heading 340°. Expect radar vectors.			
* When AIS inop, increase rts to ¾ mile. ** When AIS inop, increase CAT A/B vis to 1 mile. *** CAT E circling not authorized S of Rwy 6R-24L.				AILSF-1 			
ATIS * 133.475 332.0	SOCAL APP CON 132.2 269.1	FOSS TOWER * 135.2 298.325					

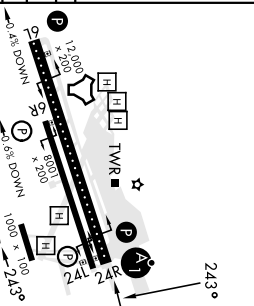


EMERG SAFE ALT 100 NM 13,600

1500	3000	WGSI and descent angles not coincident.	ELEV 477	TDZE 24L 477
	hdg 340°			TDZE 24R 475



CATEGORY	A	B	C	D	E
S-ILS 24R *		675 - 1/2	200	(200-1/2)	
S-LOC/ DME 24R **	920-1/2	445 (500-1/2)	920-7/8	445 (500-7/8)	
SIDESTEP 24L	920-1	443 (500-1)	920-1 1/2	443 (500-2)	
CIRCLING ***	940-1 (500-1)	483 (500-1)	960-1 1/2 (500-1 1/2)	1180-2 1/2 (800-2 1/2)	1340-3 (900-3)



SAN DIEGO, CALIFORNIA 32° 52' N - 117° 09' W MIRAMAR MCAS (JOE FOSS FLD) (KNKX)
 Orig 14JUL22

ILS Y or LOC/DME Y RWY 24R

ILS Z or LOC/DME Z RWY 24R

AL-903 [USN]

MIRAMAR MCAS (JOE FOSS FLD) (KNKK)

LOC/DME-HNKK 111.15 Chan 48(Y)	APCH CRS 243°	Rwy Idg 8001	24R 12,000
		TDZE 477	475 477
		Appt Elev 477	477

▼ * When AIS inop, increase rate to ¾ mile.
 ** When AIS inop, increase CAT A/B vis to 1 mile.
 *** CAT C/D E circling not authorized S of Rwy 6R-24L.

AISF-1

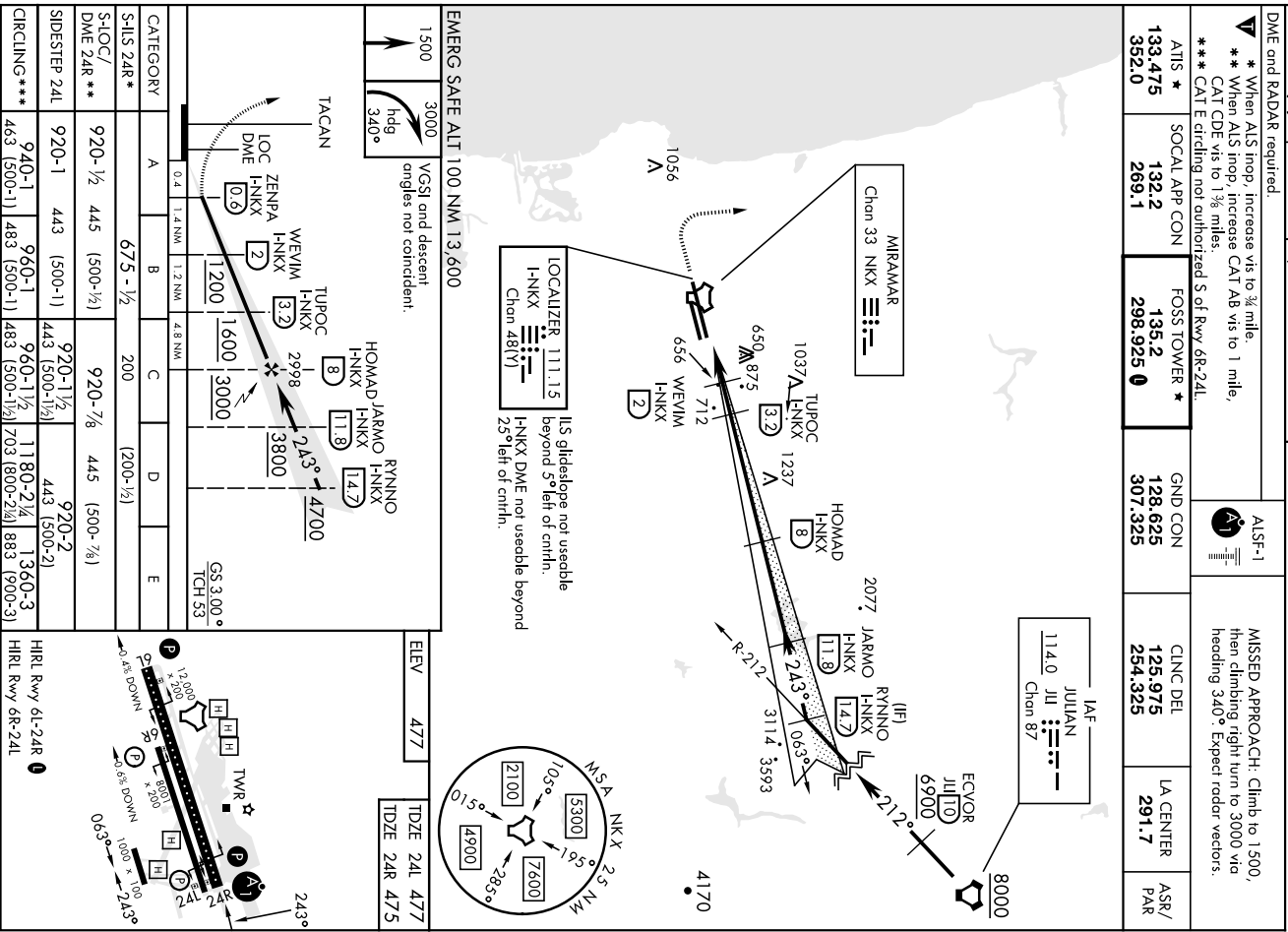
MISSED APPROACH: Climb to 1500, then climbing right turn to 3000 via heading 340°. Expect radar vectors.

ATIS * 133.475 332.0	SOCAL APP CON 132.2 269.1	FOSS TOWER * 135.2 298.325 ①
--	---	--

GND CON 128.625 307.325

CINCL DEL 125.975 234.325

LA CENTER 291.7	ASR/ PAR
---------------------------	-------------



EMERG SAFE ALT 100 NM 13,600

ELEV	477
TDZE 24L	477
TDZE 24R	475

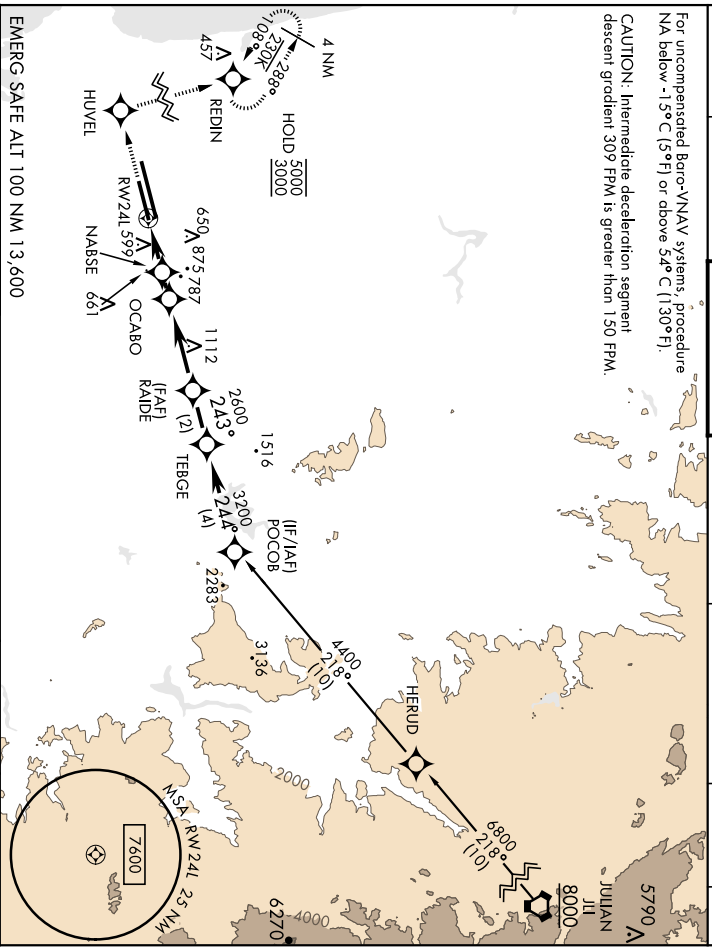
RNAV (GPS) RWY 24L

WAA5 CH 64028 W24A	APCH CRS 243°	Rwy Idg TDE Appt Elev	8001 477 477
--------------------------	------------------	-----------------------------	--------------------

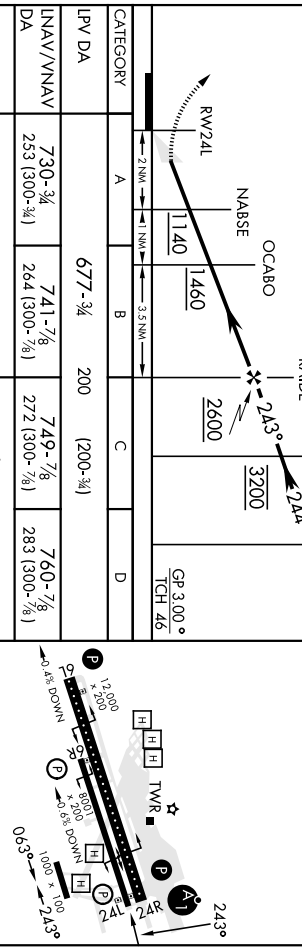
AL-903 [USN]	MIRAMAR MCAS (JOE FOSS FLD) (KNKX)
MISSED APPROACH: Climb to 3000 direct HUVEL, 288° track to REDIN and hold.	

ATIS ★ 133.475 352.0	SOCAL APP CON 132.2 269.1	FOSS TOWER ★ 135.2 298.925	GND CON 128.625 307.325	CINCL DEL 125.975 254.325	LA CENTER 291.7	ASR/ PAR
----------------------------	---------------------------------	----------------------------------	-------------------------------	---------------------------------	--------------------	-------------

For uncomputerized Baro-VNAV systems, procedure NA below -13°C (5°F) or above 34°C (130°F).
CAUTION: Intermediate deceleration segment descent gradient 309 FPM is greater than 150 FPM.



3000	HUVEL	REDIN	ELEV 477	TIDE 477
	H_t 288°			



CATEGORY	A	B	C	D
LPV DA	677-¾ 200 (200-¾)			
RNAV/VNAV	730-¾ 253 (300-¾)	741-7/8 264 (300-¾)	749-7/8 272 (300-¾)	760-7/8 283 (300-¾)
DA	960-1	483 (500-1)	960-1 ¾	483 (500-1 ¾)
RNAV MDA	960-1	483 (500-1)	960-1 ¾	483 (500-1 ¾)
CIRCLING	960-1	483 (500-1)	960-1 ½	1180-2 ¼ 483 (500-1 ½)

SAN DIEGO, CALIFORNIA 32°52'N-117°09'W MIRAMAR MCAS (JOE FOSS FLD) (KNKX)
 SAN DIEGO, CALIFORNIA 32°52'N-117°09'W
RNAV (GPS) RWY 24L
 Amdt 4 27JAN22

SAN DIEGO, CALIFORNIA

RNAV (GPS) RWY 24R

WAA5	APCH CRS	Rwy Idg	12 000
CH 61450	243°	TDZE	475
W24R		Appt Elev	477

AL-903 [USN]

MIRAMAR MCAS (JOE FOSS FLD) (KNKKX)

RNP APCH

- ▲ **When AIS inop, increase vis to 3/4 mile.
- ▼ **When AIS inop, increase vis to 1/2 mile.
- *** When AIS inop, increase CAT Ab vis to 1 mile, CAT CD vis to 3/4 miles.

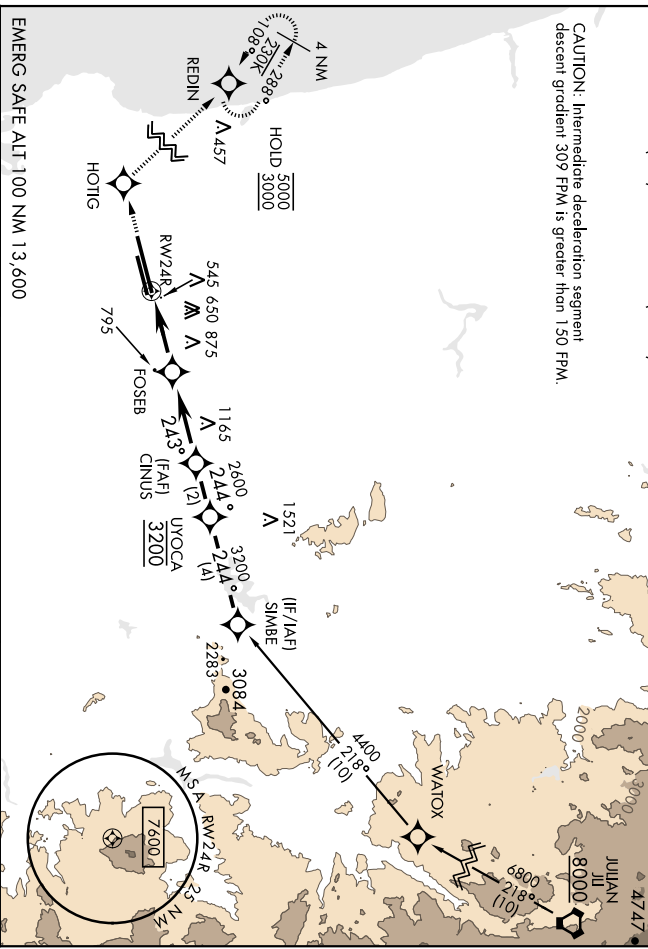


MISSED APPROACH: Climb to 3000 direct HOTIG, 288° track to REDIN and hold.

AIS *	SOCAL APP CON	FOSS TOWER *	GND CON	CINC DEL	LA CENTER	ASR/ PAR
352.0	132.2	135.2	128.625	125.975	291.7	
133.475	269.1	298.925 Ⓢ	307.325	254.325		

For uncompensated Baro-VNAV systems, procedure NA below -1.5°C (5°F) or above 5.4°C (1.30°F).

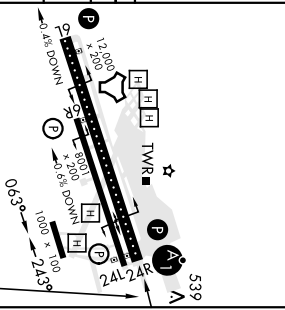
CAUTION: Intermediate deceleration segment descent gradient 309 FPM is greater than 150 FPM.



EMERG SAFE ALT 100 NM 13,600	ELEV 477	TDZE 475
------------------------------	----------	----------

3000	HOTIG	REDIN	VGSI and RNAV glidepath not coincident (VGSI Angle 3.00°/TCH 57'). SIMBE
	Ht 288°		

CATEGORY	A		B		C		D	
LPV/DA *	675-1/2				200 (200-1/2)			
RNAV/VNAV	725-1/2				250 (300-1/2)			
DA ***								
RNAV MDA ***	1060-1/2 585 (600-1/2)				1060-1 1/2 585 (600-1 1/4)			
CIRCLING	1060-1 583 (600-1)		1060-1 3/4 583 (600-1 3/4)		1180-2 1/2 703 (800-2 1/4)		HIRL Rwy 6L-24R	



SAN DIEGO, CALIFORNIA 32°52'N-117°09'W MIRAMAR MCAS (JOE FOSS FLD) (KNKKX)

Amth 4 Z7JAN22

RNAV (GPS) RWY 24R

TACAN NKX Chan 33	APCH CRS 247°	Rwy-Idg TDE Elev 24R 248	12,000	24L 475	24I 477	8001	AL-903 (USN)	MIRAMAR MCAS (JOE FOSS FLD) (KNKX)
----------------------	-------------------------	-----------------------------------	---------------	-------------------	-------------------	------	--------------	------------------------------------

* When AIS inop, increase CAT Ab vis to 1 mile, CAT CD to 1/4 miles.
 AIS-1
 MISSED APPROACH: Climb to 1500, then climbing right turn to 7000 via NKX TACAN R-003 to HUKVO. Arc NE of NKX via the 1/6 mile arc to WARNT and hold. Cross NKX R-323 at 3000 mandatory, cross HUKVO at 6000 mandatory.

ATIS * 133.475 352.0	SOCAL APP CON 132.2 269.1	FOSS TOWER * 135.2 298.925 0	GND CON 128.625 307.325	CLNC DEL 125.975 254.325	LA CENTER 291.7	ASR/ PAR
----------------------------	---------------------------------	---	-------------------------------	--------------------------------	--------------------	-------------

	Knots	60	120	180	240	300	360
	V/W(fpm)	275	550	825	1100	1375	1650
	ATC climb of 275 f/NM to 6000						

