

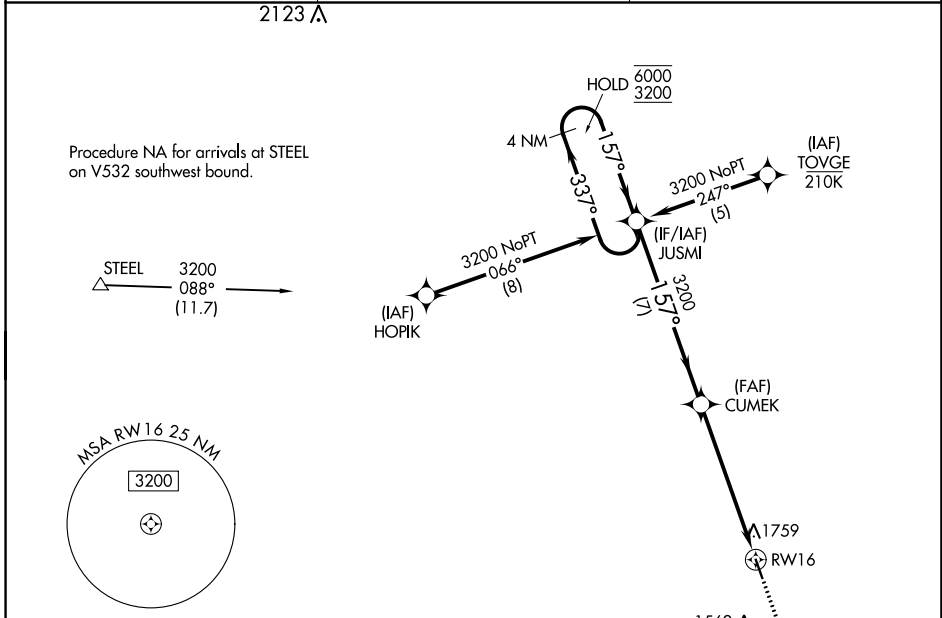
APP CRS	Rwy Idg	<b>4200</b>
<b>157°</b>	TDZE	<b>1283</b>
	Apt Elev	<b>1283</b>

# RNAV (GPS) RWY 16

MARYSVILLE MUNI (MYZ)

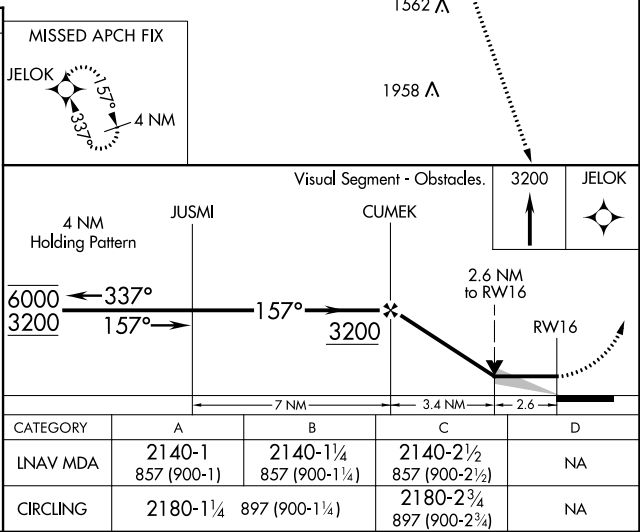
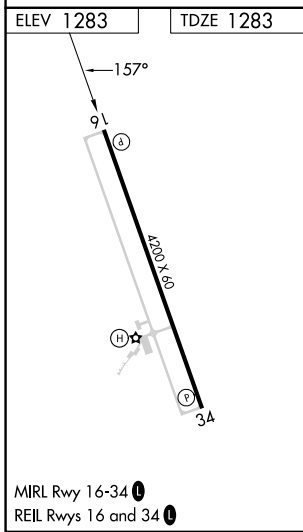
RNP APCH - GPS.	MISSED APPROACH: Climb to 3200 direct JELOK and hold.
<p>▼ When local altimeter setting not received, use Beatrice altimeter setting and increase all MDAs 80 feet and increase LNAV Cat A and Circling Cats B/C visibility ¼ SM.</p>	

AWOS-3PT <b>118.675</b>	KANSAS CITY CENTER <b>123.8 343.7</b>	UNICOM <b>122.8 (CTAF) 0</b>
----------------------------	--	---------------------------------



NC-2, 22 FEB 2024 to 21 MAR 2024

NC-2, 22 FEB 2024 to 21 MAR 2024



MARYSVILLE, KANSAS

AL-6566 (FAA)

23054

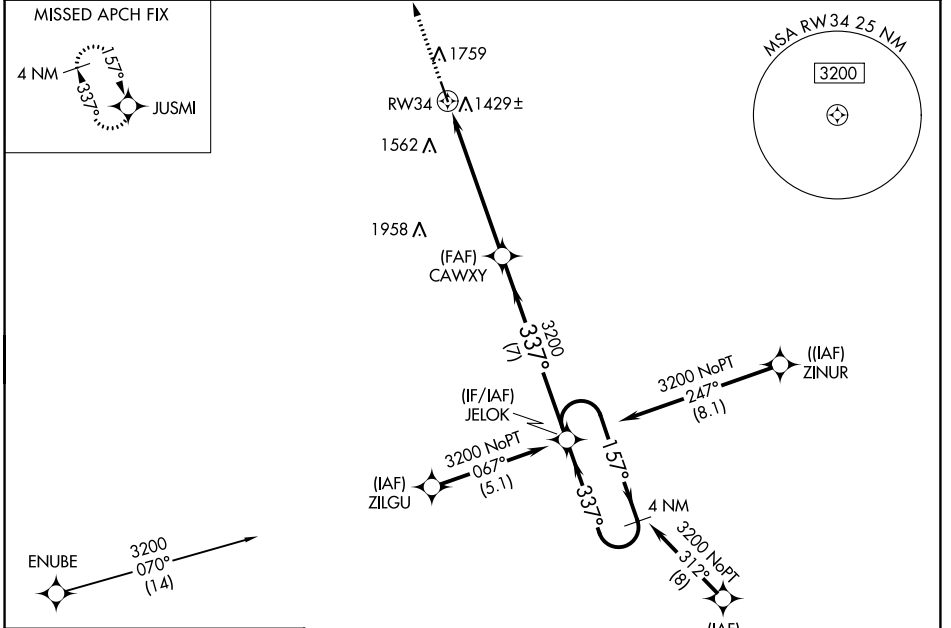
WAAS CH <b>82420</b> <b>W34A</b>	APP CRS <b>337°</b>	Rwy Idg TDZE Apt Elev	<b>4200</b> <b>1283</b> <b>1283</b>
--	------------------------	-----------------------------	---

# RNAV (GPS) RWY 34

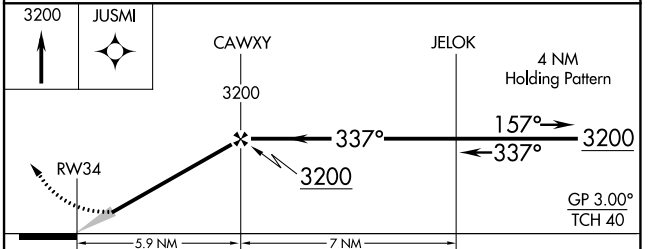
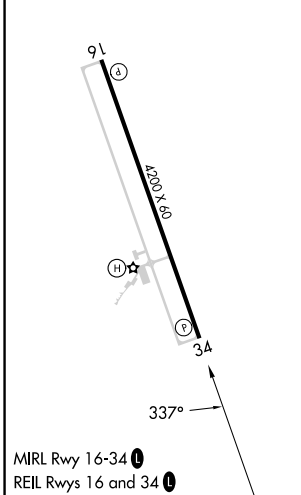
MARYSVILLE MUNI (MYZ)

RNP APCH.	MISSED APPROACH: Climb to 3200 direct JUSMI and hold.
When local altimeter setting not received, use Beatrice altimeter setting. Baro-VNAV NA when using Beatrice altimeter setting.	

AWOS-3PT <b>118.675</b>	KANSAS CITY CENTER <b>123.8 343.7</b>	UNICOM <b>122.8 (CTAF) 0</b>
----------------------------	--	---------------------------------



ELEV 1283	TDZE 1283
-----------	-----------



CATEGORY	A	B	C	D
LPV DA	1629-1 $\frac{1}{8}$		346 (400-1 $\frac{1}{8}$ )	NA
LNAV/VNAV DA	1674-1 $\frac{3}{8}$		391 (400-1 $\frac{3}{8}$ )	NA
LNAV MDA	1900-1	617 (700-1)	1900-1 $\frac{3}{4}$ 617 (700-1 $\frac{3}{4}$ )	NA
CIRCLING	2180-1 $\frac{1}{4}$	897 (900-1 $\frac{1}{4}$ )	2180-2 $\frac{3}{4}$ 897 (900-2 $\frac{3}{4}$ )	NA

MARYSVILLE, KANSAS  
Orig-C 25APR19

39°51'N-96°38'W

# RNAV (GPS) RWY 34

NC-2, 22 FEB 2024 to 21 MAR 2024

NC-2, 22 FEB 2024 to 21 MAR 2024