

LOC/DME I-LUC 109.15 Chan 28 (Y)	APP CRS 240°	Rwy Idg TDZE Apt Elev	5500 545 547
--	------------------------	-----------------------------	---

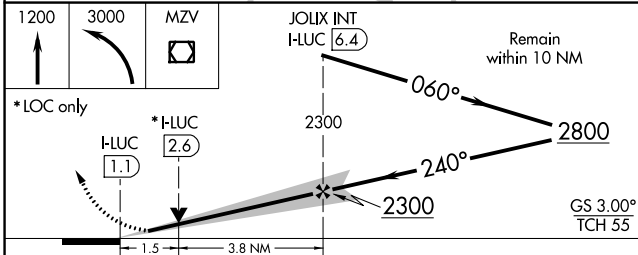
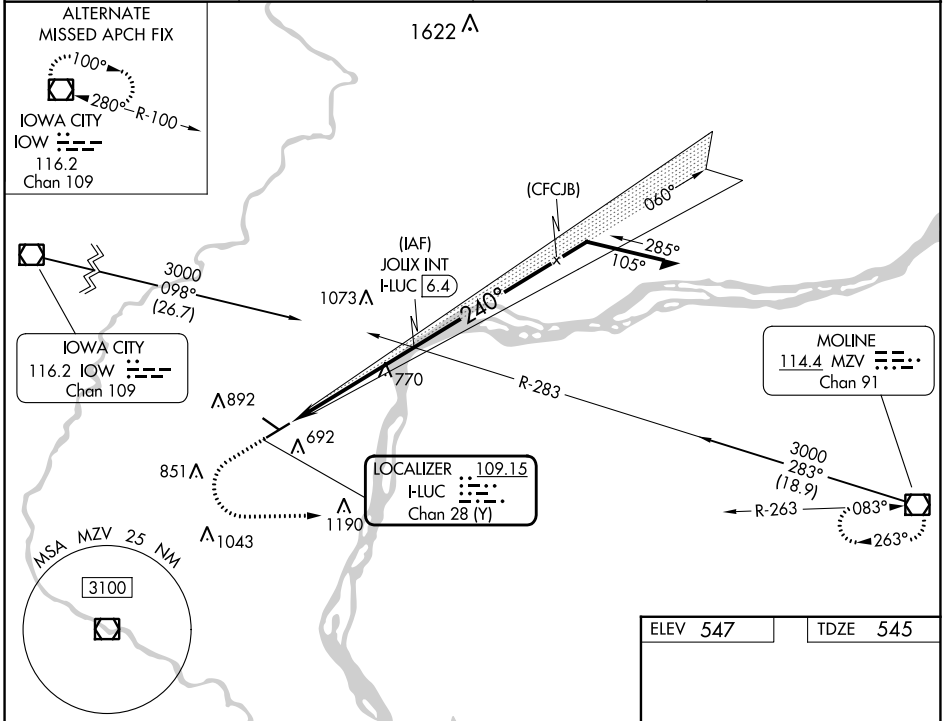
ILS or LOC RWY 24

MUSCATINE MUNI (MUT)

VDP NA with Iowa City altimeter setting. When local altimeter setting not received, use Iowa City altimeter setting; increase DA to 825 feet; increase all MDA 80 feet and S-LOC 24 Cat C/D visibility $\frac{3}{8}$ SM and Circling Cat C visibility $\frac{1}{4}$ SM. For inop ALS when using Iowa City altimeter setting, increase S-ILS 24 visibility to 1 SM all Cats, and S-LOC 24 Cat C/D visibility to $1\frac{3}{4}$ SM.

MALSR MISSED APPROACH: Climb to 1200 then climbing left turn to 3000 direct MZV VOR/DME and hold.

AWOS-3P 120.625	QUAD CITY APP CON * 133.275 257.8	CLNC DEL 119.125	UNICOM 122.7 (CTAF) 0
---------------------------	---	----------------------------	--



ELEV 547	TDZE 545
REIL Rwy 6, 12, and 30	
MIRL Rwy 6-24 and 12-30	
FAF to MAP 5.3 NM	
Knots	60 90 120 150 180
Min:Sec	5:18 3:32 2:39 2:07 1:46

CATEGORY	A	B	C	D
S-ILS 24	745- $\frac{1}{2}$ 200 (200- $\frac{1}{2}$)			
S-LOC 24	1080- $\frac{1}{2}$ 535 (600- $\frac{1}{2}$)	1080-1 535 (600-1)		
C CIRCLING	1080-1 533 (600-1)	1200-1 653 (700-1)	1200-1 $\frac{3}{4}$ 653 (700-1 $\frac{3}{4}$)	1500-3 953 (1000-3)

NC-3, 22 FEB 2024 to 21 MAR 2024

NC-3, 22 FEB 2024 to 21 MAR 2024

WAAS CH 56336 W12A	APP CRS 126°	Rwy Ldg 4000 TDZE 541 Apt Elev 547
--	------------------------	---

RNAV (GPS) RWY 12

MUSCATINE MUNI (MUT)

⚠ DME/DME RNP-0.3 NA. Helicopter visibility reduction below 1 SM NA. VDP and Baro-VNAV NA with Iowa City altimeter setting. When local altimeter setting not received, use Iowa City altimeter setting and increase all DA 76 feet and all MDA 80 feet, increase LPV, LNAV/VNAV all Cts visibility ½ mile. For uncompensated Baro-VNAV systems, LNAV/VNAV NA below -16°C (4°F) or above 54°C (130°F).

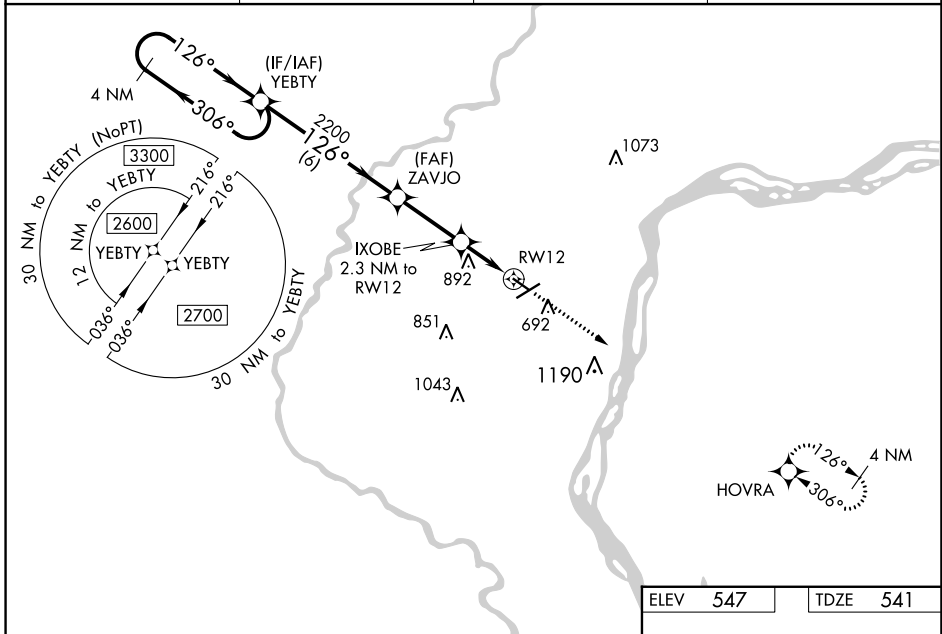
MISSED APPROACH: Climb to 2700 direct HOVRA and hold.

AWOS-3P
120.625

QUAD CITY APP CON *
133.275 257.8

CINC DEL
119.125

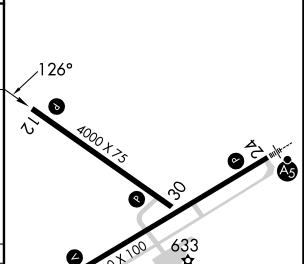
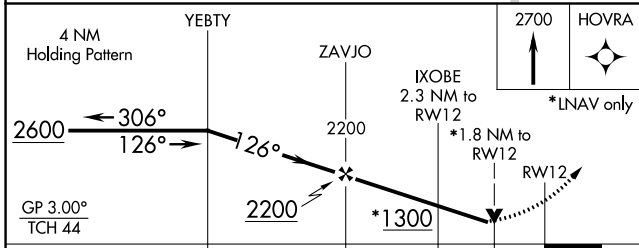
UNICOM
122.7 (CTAF)



NC-3, 22 FEB 2024 to 21 MAR 2024

NC-3, 22 FEB 2024 to 21 MAR 2024

ELEV 547	TDZE 541
----------	----------



CATEGORY	A	B	C	D
LPV DA	1207-2½	666 (700-2½)		NA
LNAV/VNAV DA	1223-2½	682 (700-2½)		NA
LNAV MDA	1140-1	599 (600-1)		NA
CIRCLING	1140-1 593 (600-1)	1200-1 653 (700-1)		NA

REIL Rws 6, 12, and 30 **Ⓛ**
MIRL Rws 6-24 and 12-30 **Ⓛ**

WAAS CH 99701 W24A	APP CRS 240°	Rwy Idg TDZE Apt Elev	5500 545 547
--	------------------------	-----------------------------	---

RNAV (GPS) RWY 24

MUSCATINE MUNI (MUT)

RNP APCH

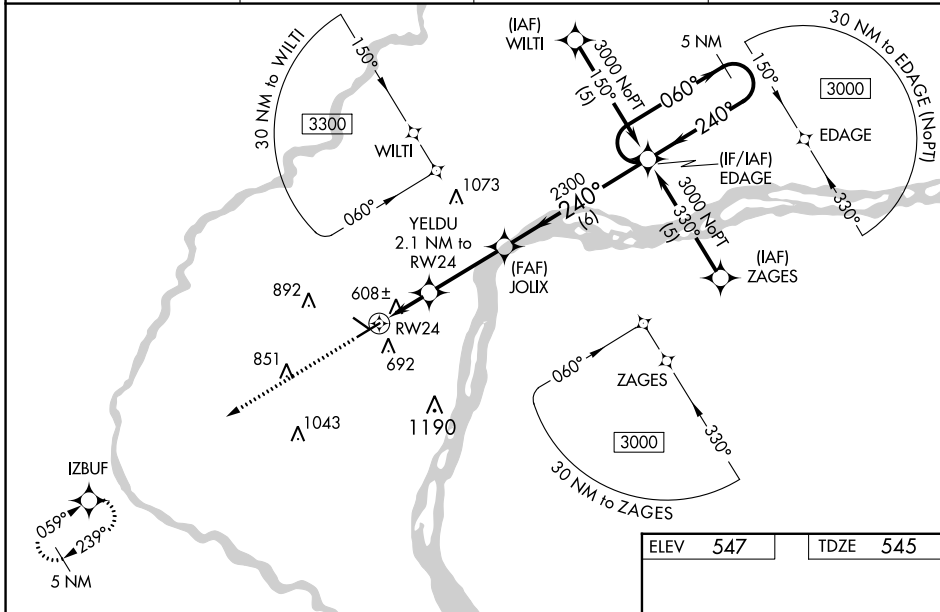
▼ For uncompensated Baro-VNAV systems, LNAV/VNAV NA below -16°C (4°F) or above 48°C (118°F). For inop ALS, increase LPV all visibilities to 1 SM, increase LNAV/VNAV all Cats and LNAV Cats C visibility to 1½ SM, and increase LNAV Cat D visibility to 1¼ SM. When local altimeter setting not received, use Iowa City altimeter setting and increase LPV DA to 992 and all visibilities ¼ SM; increase LNAV/VNAV DA to 1030 feet and all visibilities ¼ SM; increase all MDA 80 feet and LNAV Cats C and D visibility ¼ SM and Circling Cat C visibility ¼ SM. For inop ALS when using Iowa City altimeter setting, increase LPV all visibilities to 1 SM, LNAV/VNAV all visibilities to 1¾ SM, LNAV Cats A and B visibility to 1 SM, and LNAV Cats C and D visibility to 1¾ SM. Baro-VNAV and VDP NA when using Iowa City altimeter setting.

MALSR



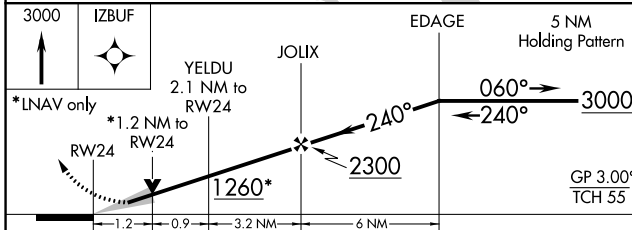
MISSED APPROACH:
Climb to 3000 direct IZBUF and hold.

AWOS-3P 120.625	QUAD CITY APP CON * 133.275 257.8	CLNC DEL 119.125	UNICOM 122.7 (CTAF) 0
---------------------------	---	----------------------------	---------------------------------



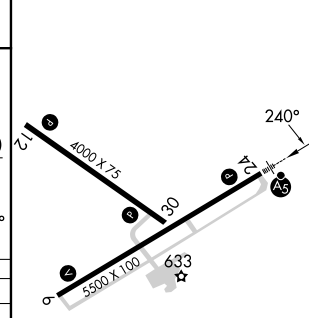
NC-3, 22 FEB 2024 to 21 MAR 2024

NC-3, 22 FEB 2024 to 21 MAR 2024



ELEV 547	TDZE 545
----------	----------

CATEGORY	A	B	C	D
LPV DA		812-½	267 (300-½)	
LNAV/VNAV DA		950-¾	405 (500-¾)	
LNAV MDA	960-½	415 (500-½)	960-¾ 415 (500-¾)	960-1 415 (500-1)
C CIRCLING	1080-1¼ 533 (600-1¼)	1200-1¼ 653 (700-1¼)	1200-1¾ 653 (700-1¾)	1500-3 953 (1000-3)



REIL Rws 6, 12, and 30 **0**
 MIRL Rws 6-24 and 12-30 **0**

WAAS CH 42636 W30A	APP CRS 306°	Rwy Idg TDZE Apt Elev	4000 543 547
--	------------------------	-----------------------------	---

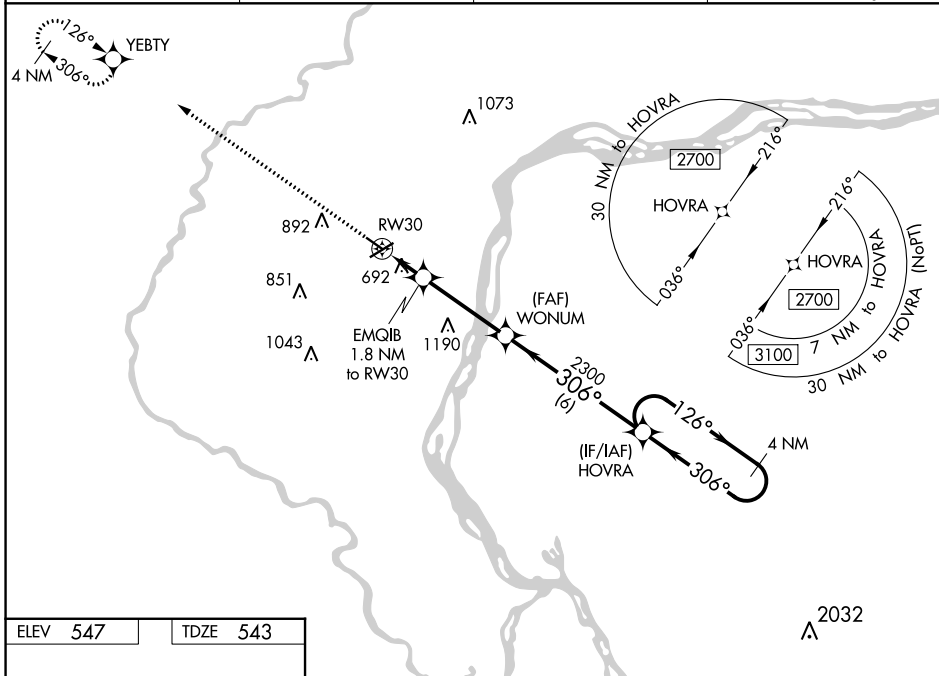
RNAV (GPS) RWY 30

MUSCATINE MUNI (MUT)

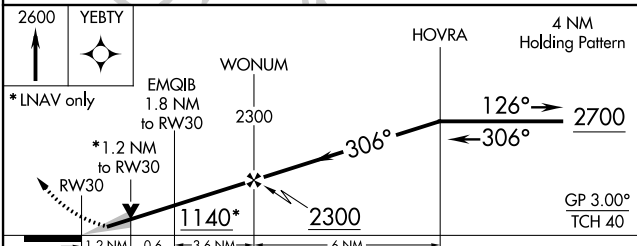
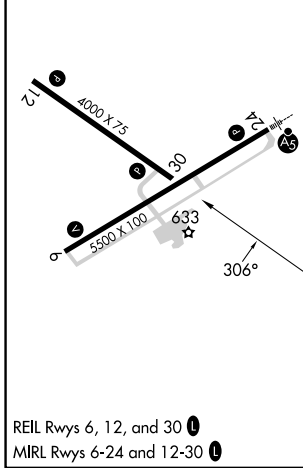
▼ DME/DME RNP-0.3 NA. Helicopter visibility reduction below 1 SM NA. VDP and Baro-VNAV NA with Iowa City altimeter setting. When local altimeter setting not received, use Iowa City altimeter setting and increase all DA 76 feet and all MDA 80 feet, increase LNAV/VNAV all Cats visibility 1/4 mile. For uncompensated Baro-VNAV systems, LNAV/VNAV NA below -16°C (4°F) or above 54°C (130°F).

MISSED APPROACH: Climb to 2600 direct YEBTY and hold.

AWOS-3P 120.625	QUAD CITY APP CON * 133.275 257.8	CLNC DEL 119.125	UNICOM 122.7 (CTAF) 0
---------------------------	---	----------------------------	---------------------------------



ELEV 547	TDZE 543
-----------------	-----------------



CATEGORY	A	B	C	D
LPV DA	743-1	200 (200-1)		NA
LNAV/VNAV DA	989-1½	446 (500-1½)		NA
LNAV MDA	960-1	417 (500-1)		NA
C CIRCLING	1000-1 453 (500-1)	1200-1 653 (700-1)		NA

NC-3, 22 FEB 2024 to 21 MAR 2024

NC-3, 22 FEB 2024 to 21 MAR 2024

WAAS CH 53701 W06A	APP CRS 059°	Rwy Idg TDZE Apt Elev	5500 547 547
--	------------------------	-----------------------------	---

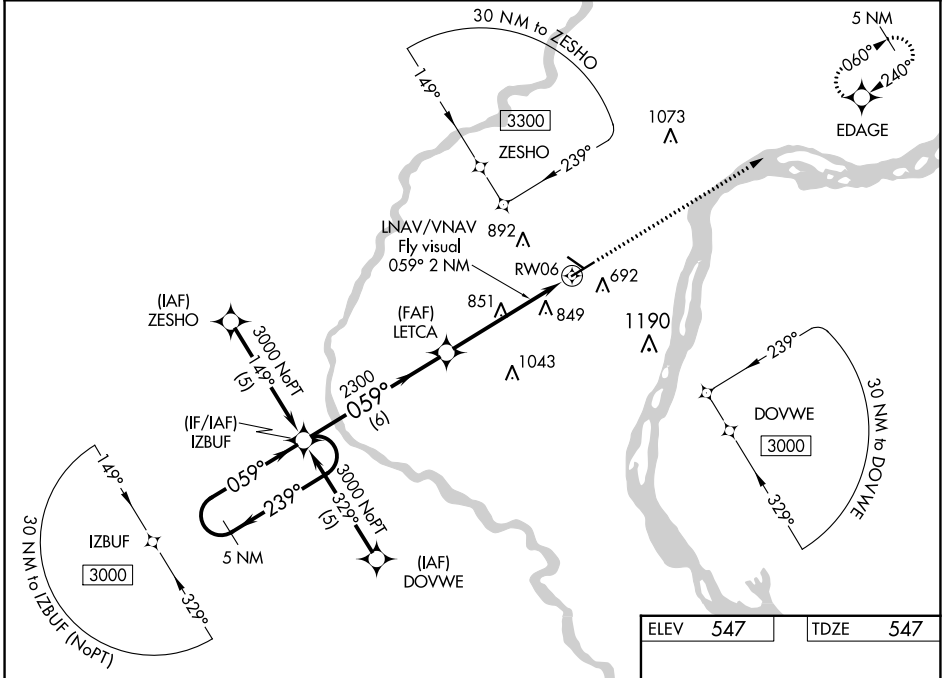
RNAV (GPS) RWY 6

MUSCATINE MUNI (MUT)

⚠ DME/DME RNP-0.3 NA. Visibility reductions by helicopters NA. For uncompensated Baro-VNAV systems, LNAV/VNAV NA below -16°C (4°F) or above 48°C (118°F). If local altimeter setting not received, use Iowa City Muni altimeter setting and increase all DAs/MDAs 80 feet. Baro-VNAV and VDP NA when using Iowa City Muni altimeter setting.

MISSED APPROACH: Climb to 3000 direct EDAGE and hold.

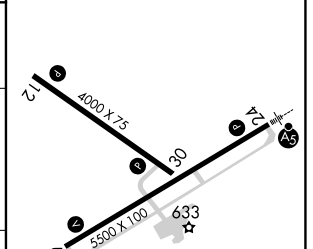
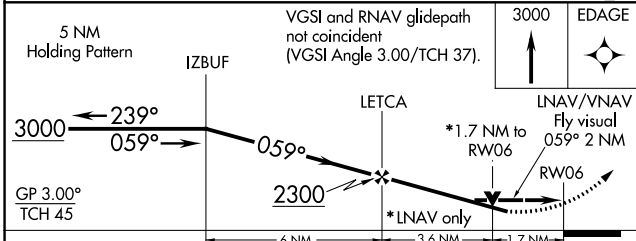
AWOS-3P 120.625	QUAD CITY APP CON * 133.275 257.8	CLNC DEL 119.125	UNICOM 122.7 (CTAF) 0
---------------------------	---	----------------------------	---------------------------------



NC-3, 22 FEB 2024 to 21 MAR 2024

NC-3, 22 FEB 2024 to 21 MAR 2024

ELEV 547	TDZE 547
----------	----------



CATEGORY	A	B	C	D
LPV DA	1076-2 529 (600-2)			
LNAV/VNAV DA	1232-2 685 (700-2)			1232-2¼ 685 (700-2¼)
LNAV MDA	1120-1 573 (600-1)	1120-1½ 573 (600-1½)		1120-1¾ 573 (600-1¾)
CIRCLING	1120-2½ 573 (600-2½)	1200-2½ 653 (700-2½)	1500-3 953 (1000-3)	

REIL Rwy 6, 12, and 30 0
MIRL Rwy 6-24 and 12-30 0