

**TOP ALTITUDE:  
3000**

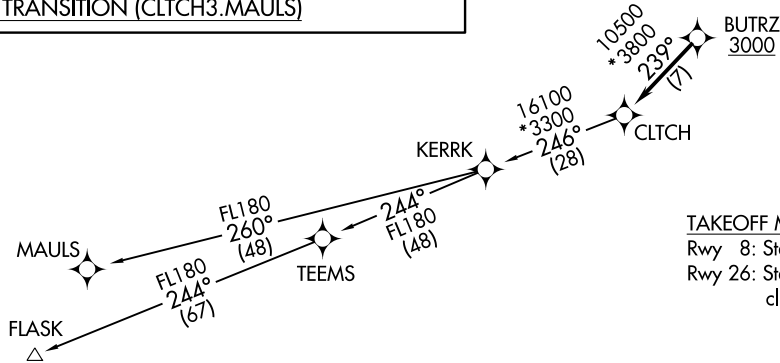
ASOS  
119.925  
CLINC DEL  
121.8 257.65  
132.075 269.075 (When twr closed)  
GND CON  
121.8 257.65  
MARTINSBURG TOWER \*  
124.3 (CTAF) 233.7  
POTOMAC DEP CON  
126.825 239.025

**DEPARTURE ROUTE DESCRIPTION**

Climb on heading assigned by ATC, expect RADAR vectors to BUTRZ, then on track 239° to CLTCH, thence . . . .  
. . . . on assigned transition, maintain altitude assigned by ATC, expect clearance to filed altitude within ten (10) minutes after departure.

FLASK TRANSITION (CLTCH3.FLASK)  
MAULS TRANSITION (CLTCH3.MAULS)

- NOTE: RNAV 1.
- NOTE: RADAR required.
- NOTE: DME/DME/IRU or GPS required.
- NOTE: Turbo-jets only.
- NOTE: Takeoff Rwy 8: If issued an ATC heading that requires a westbound turn, climb heading 081° to 1200 prior to turning for obstacle avoidance.
- NOTE: Takeoff Rwy 26: If issued an ATC heading that requires a right turn, climb heading 261° to 2400 prior to turning for obstacle avoidance.



TAKEOFF MINIMUMS

Rwy 8: Standard.  
Rwy 26: Standard with a minimum climb of 225' per NM to 2100.



NOTE: Chart not to scale.

CLTCH THREE DEPARTURE (RNAV)  
(CLTCH3:CLTCH) 31DECCO

MARTINSBURG, WEST VIRGINIA  
EASTERN WV RGNL/SHEPHERD FLD (MRB)

(CLTCH3:CLTCH) 22083  
CLTCH THREE DEPARTURE (RNAV)

EASTERN WV RGNL/SHEPHERD FLD (MRB)  
MARTINSBURG, WEST VIRGINIA  
AL-249 (FAA)

(JDUBB4.JDUBB) 22083

EASTERN WV RGNL/SHEPHERD FLD (M.R.B)

# JDUBB FOUR DEPARTURE (RNAV) AL-249 (FAA)

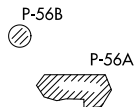
MARTINSBURG, WEST VIRGINIA

ASOS 119.925  
 CLNC DEL  
 121.8 257.65  
 132.075 269.075 (When twr closed)  
 GND CON  
 121.8 257.65  
 MARTINSBURG TOWER ★  
 124.3 (CTAF) 233.7  
 POTOMAC DEP CON  
 126.825 239.025

**TOP ALTITUDE:**  
**3000**

### TAKEOFF MINIMUMS

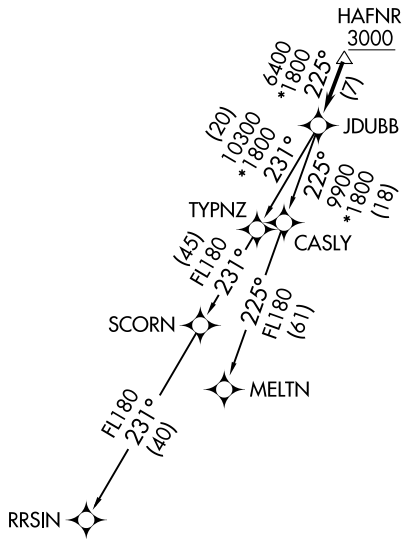
Rwy 8: Standard.  
 Rwy 26: Standard with a minimum  
 climb of 225' per NM to 2100.



- NOTE: RNAV 1.
- NOTE: RADAR required.
- NOTE: DME/DME/IRU or GPS required.
- NOTE: Turbo-jets only.
- NOTE: Takeoff Rwy 8: If issued an ATC heading that requires a westbound turn, climb heading 081° to 1200 prior to turning for obstacle avoidance.
- NOTE: Takeoff Rwy 26: If issued an ATC heading that requires a right turn, climb heading 261° to 2400 prior to turning for obstacle avoidance.

NE-4, 22 FEB 2024 to 21 MAR 2024

NE-4, 22 FEB 2024 to 21 MAR 2024



**DEPARTURE ROUTE DESCRIPTION**

Climb on heading assigned by ATC, expect RADAR vectors to HAFNR, then on track 225° to JDUBB, thence. . . .  
 . . . . on assigned transition, maintain 3000, expect clearance to filed altitude within ten (10) minutes after departure.

MELTN TRANSITION (JDUBB4.MELTN)  
RRSIN TRANSITION (JDUBB4.RRSIN)

NOTE: Chart not to scale.

SCRAM SIX DEPARTMENT (RNAV)  
(SCRAM6, SCRAM) 31 DEC 20

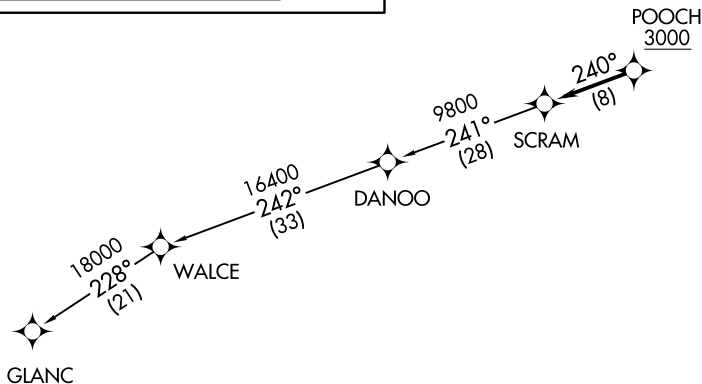
MARTINSBURG, WEST VIRGINIA  
EASTERN WV RGNL/SHEPHERD FLD (MIRJB)

ASOS 119.925  
CLNIC DEL  
121.8 257.65  
132.075 269.075 (When Tower Closed)  
GND CON  
121.8 257.65  
MARTINSBURG TOWER ★  
124.3 (CTAF) 233.7  
POTOMAC DEP CON  
126.825 239.025

▼ DEPARTURE ROUTE DESCRIPTION

Climb on heading assigned by ATC, expect RADAR vectors to POOCH, then on track 240° to SCRAM, thence. . . .  
. . . . as depicted. Maintain 3000, expect clearance to filed altitude within ten (10) minutes after departure.

GLANC TRANSITION (SCRAM6.GLANC):



TAKEOFF MINIMUMS

Rwy 8: Standard.  
Rwy 26: Standard with a minimum climb of 225' per NM to 2100.

- NOTE: RNAV 1.
- NOTE: RADAR required.
- NOTE: DME/DME/IRU or GPS required.
- NOTE: Turbo-jets only.
- NOTE: Takeoff Rwy 8, if issued an ATC heading that requires a westbound turn, climb heading 081° to 1200 prior to turning for obstacle avoidance.
- NOTE: Takeoff Rwy 26, if issued an ATC heading that requires a right turn, climb heading 261° to 2400 prior to turning for obstacle avoidance.

NOTE: Chart not to scale.

TOP ALTITUDE:  
3000



(SCRAM6, SCRAM) 22083  
SCRAM SIX DEPARTMENT (RNAV)

EASTERN WV RGNL/SHEPHERD FLD (MIRJB)  
MARTINSBURG, WEST VIRGINIA  
A1-249 (FAA)

(TRIXY5.TRIXY) 23334

EASTERN WV RGNL/SHEPHERD FLD (MRB)

# TRIXY FIVE DEPARTURE

AL-249 (FAA)

MARTINSBURG, WEST VIRGINIA

ASOS  
 119.925  
 CLNC DEL  
 121.8 257.65  
 132.075 269.075 (When Tower Closed)  
 GND CON  
 121.8 257.65  
 MARTINSBURG TOWER\*  
 124.3 (CTAF) 233.7  
 POTOMAC DEP CON  
 126.825 239.025

### TAKEOFF MINIMUMS

Rwy 8: Standard.  
 Rwy 26: Standard with minimum climb  
 of 300' per NM to 5000'.

**TOP ALTITUDE:  
 6000**

KESSEL  
 110.8 ESL :...  
 Chan 45



R-103

6000  
 283°  
 (41)

TRIXY  
 5000



TRIXY INT

6000

199°

(18)

R-019

LINDEN  
 114.3 LDN :...  
 Chan 90



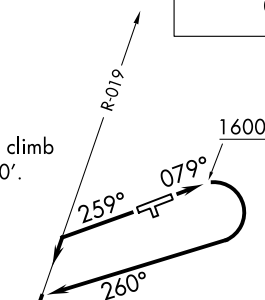
R-019

ARMEL  
 113.5 AML :...  
 Chan 82



R-300

6000  
 120°  
 (33)



NE-4, 22 FEB 2024 to 21 MAR 2024

NE-4, 22 FEB 2024 to 21 MAR 2024

Note: Chart not to scale.



### DEPARTURE ROUTE DESCRIPTION

**TAKEOFF RUNWAY 8:** Climb heading 079° to 1600, then climbing right turn heading 260° to intercept LDN VORTAC R-019 to cross TRIXY INT at 5000, then on transition or assigned route, thence . . . .

**TAKEOFF RUNWAY 26:** Climb heading 259° to intercept LDN VORTAC R-019 to cross TRIXY INT at 5000, then on transition or assigned route, thence . . . .  
 . . . . maintain 6000, expect filed altitude/flight level ten minutes after departure.

**ARMEL TRANSITION (TRIXY5.AML):** From over TRIXY INT on AML R-300 to AML VOR/DME.

**KESSEL TRANSITION (TRIXY5.ESL):** From over TRIXY INT on ESL R-103 to ESL VOR/DME.

**LINDEN TRANSITION (TRIXY5.LDN):** From over TRIXY INT on LDN R-019 to LDN VORTAC.

# TRIXY FIVE DEPARTURE

(TRIXY5.TRIXY) 31MAR16

MARTINSBURG, WEST VIRGINIA

EASTERN WV RGNL/SHEPHERD FLD (MRB)