

WAAS CH 97436 W17A	APP CRS 173°	Rwy Idg TDZE Apt Elev	4497 1387 1387
--	------------------------	-----------------------------	---

RNAV (GPS) RWY 17

COMANCHE COUNTY-CITY (MKN)

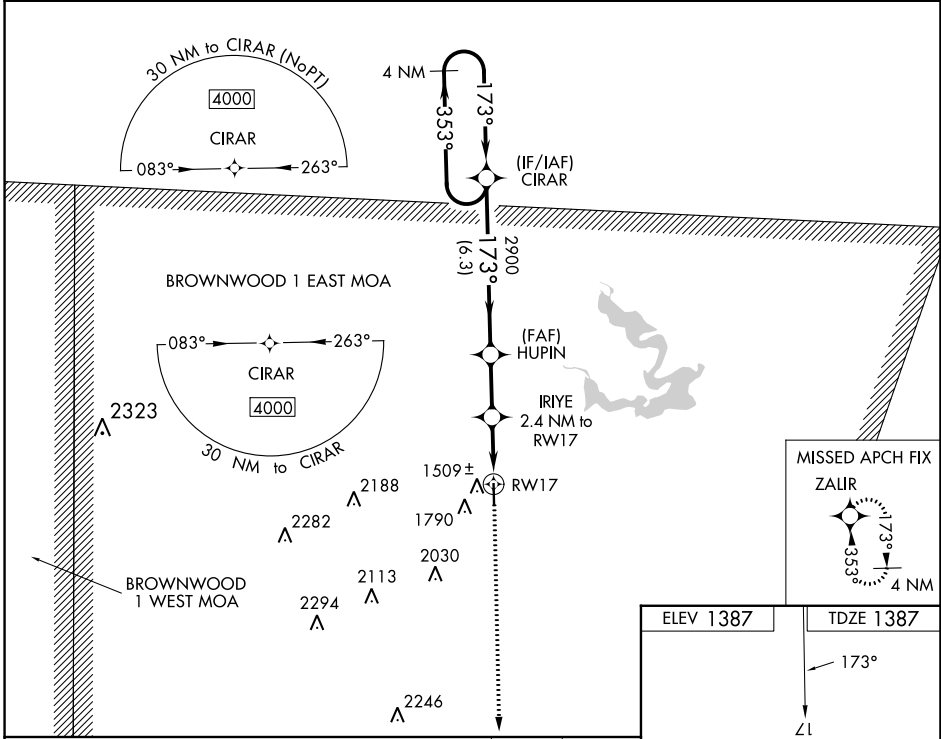
▼ Night landing: Rwy 35 NA. DME/DME RNP-0.3 NA. When local altimeter setting is not received, use Brownwood altimeter setting; increase all DA 46 feet and all MDA 60 feet, increase LNAV/VNAV visibility all Cats 1/8 mile. Baro-VNAV and VDP NA when using Brownwood altimeter setting. For uncompensated Baro-VNAV systems, LNAV/VNAV NA below -17°C (2°F) or above 54°C (130°F).

MISSED APPROACH:
Climb to 4000 direct ZAIR and hold.

AWOS-3
118.575

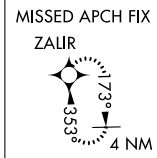
FORT WORTH CENTER
127.15 314.0

UNICOM
123.075 (CTAF) 0

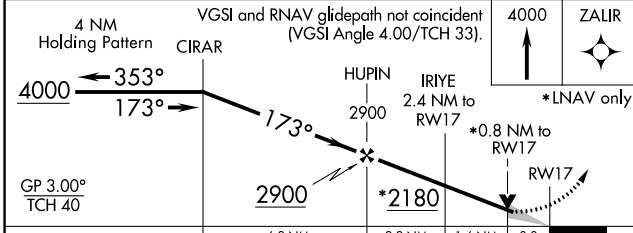
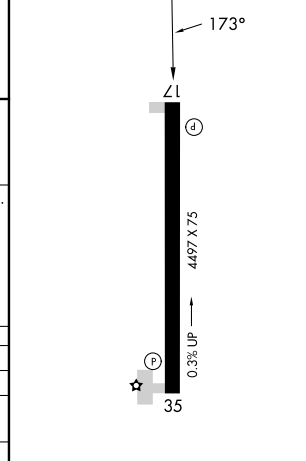


SC-3, 22 FEB 2024 to 21 MAR 2024

SC-3, 22 FEB 2024 to 21 MAR 2024



ELEV 1387	TDZE 1387
-----------	-----------



CATEGORY		A	B	C	D
LPV DA		1637-1	250 (300-1)		NA
LNAV/VNAV DA		1686-1	299 (300-1)		NA
LNAV MDA		1760-1	373 (400-1)		NA
C CIRCLING		2100-1	713 (800-1)		NA

MIRL Rwy 17-35 0

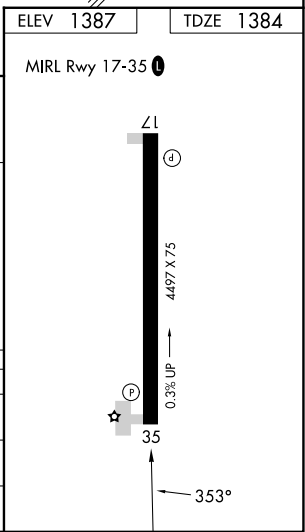
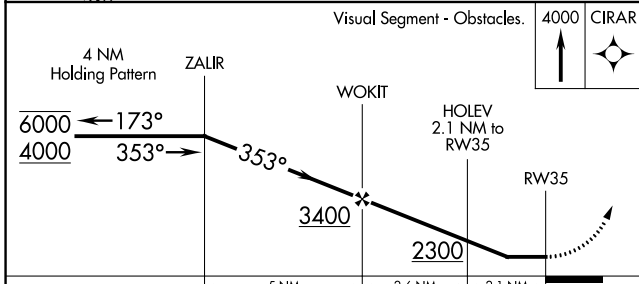
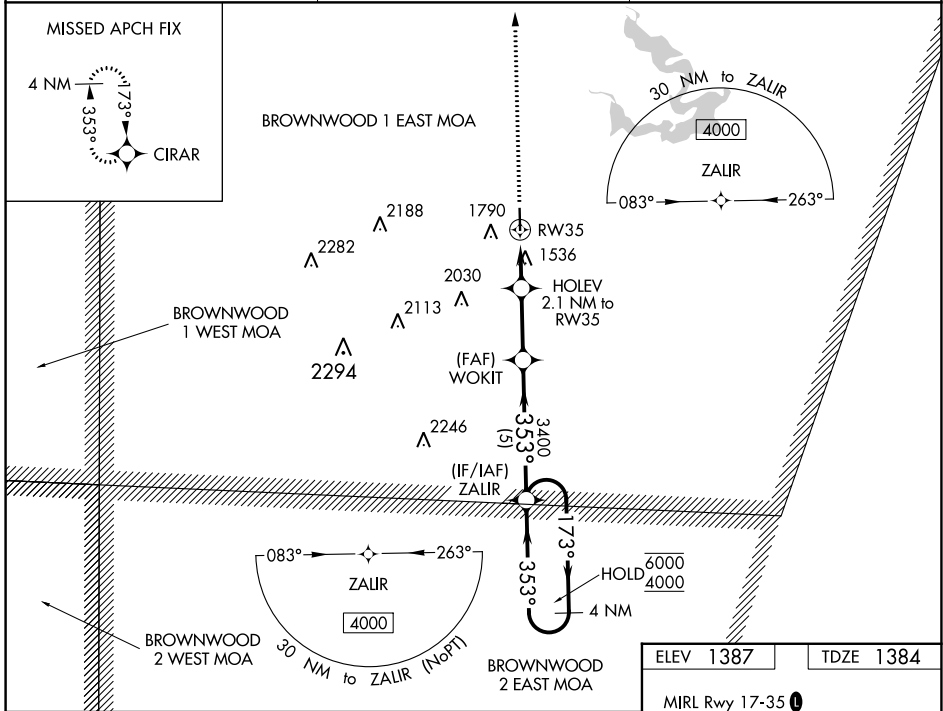
WAAS CH 61136 W35A	APP CRS 353°	Rwy Idg TDZE 1384 Apt Elev 1387	4497
--	------------------------	---	-------------

RNAV (GPS) RWY 35

COMANCHE COUNTY-CITY (MKN)

RNP APCH 	MISSED APPROACH: Climb to 4000 direct CIRAR and hold.
--------------	---

AWOS-3 118.575	FORT WORTH CENTER 127.15 314.0	UNICOM 123.075 (CTAF) 0
--------------------------	--	-----------------------------------



CATEGORY	A	B	C	D
LP MDA	1840-1	456 (500-1)		NA
LNAV MDA	1840-1	456 (500-1)		NA
CIRCLING	2100-1	713 (800-1)		NA

SC-3, 22 FEB 2024 to 21 MAR 2024

SC-3, 22 FEB 2024 to 21 MAR 2024