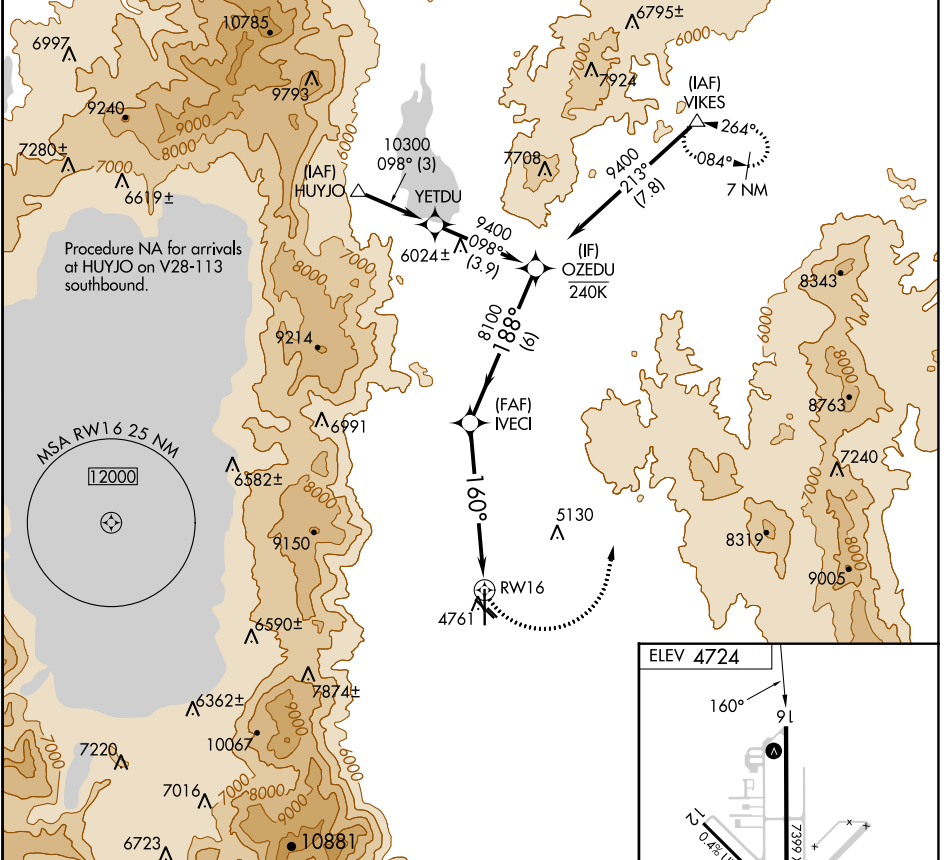


APP CRS 160°	Rwy Idg TDZE Apt Elev	N/A N/A 4724
------------------------	-----------------------------	---

RNAV (GPS)-A

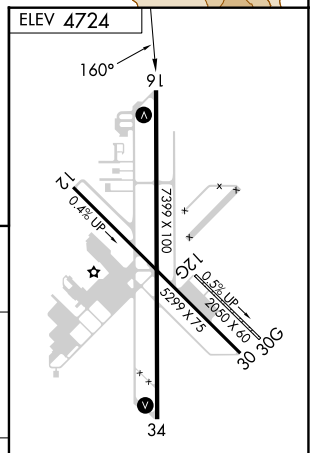
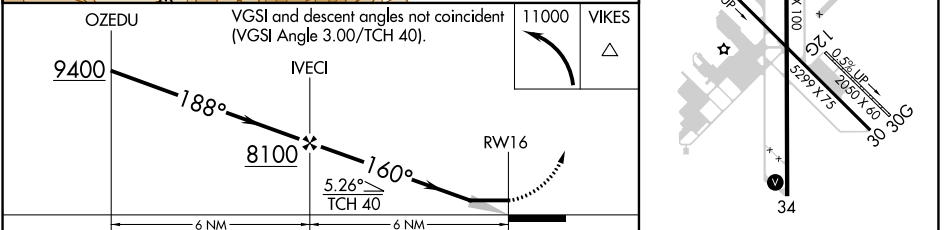
MINDEN-TAHOE (MEV)

RNP APCH.		MISSED APPROACH: Climbing left turn to 11000 direct VIKES and hold, continue climb-in-hold to 11000.	
<p>▼ Circling NA for Cat D southwest of Rws 12 and 34. ▲ Circling Rwy 12L, 30R NA at night.</p>		AWOS-3PT 119.325	NORCAL APP CON 119.2 279.55
		CINC DEL 133.25	UNICOM 123.05 (CTAF) 0



SW-4, 18 MAY 2023 to 15 JUN 2023

SW-4, 18 MAY 2023 to 15 JUN 2023



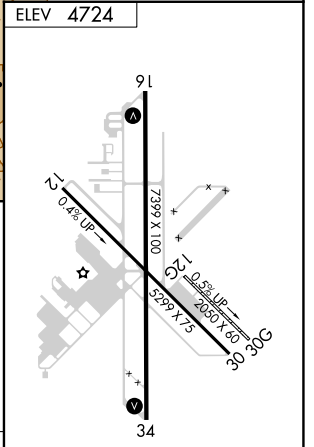
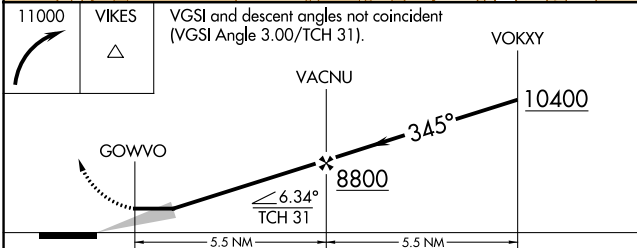
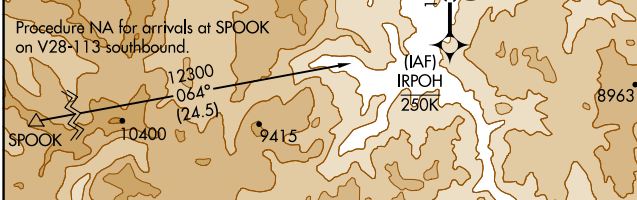
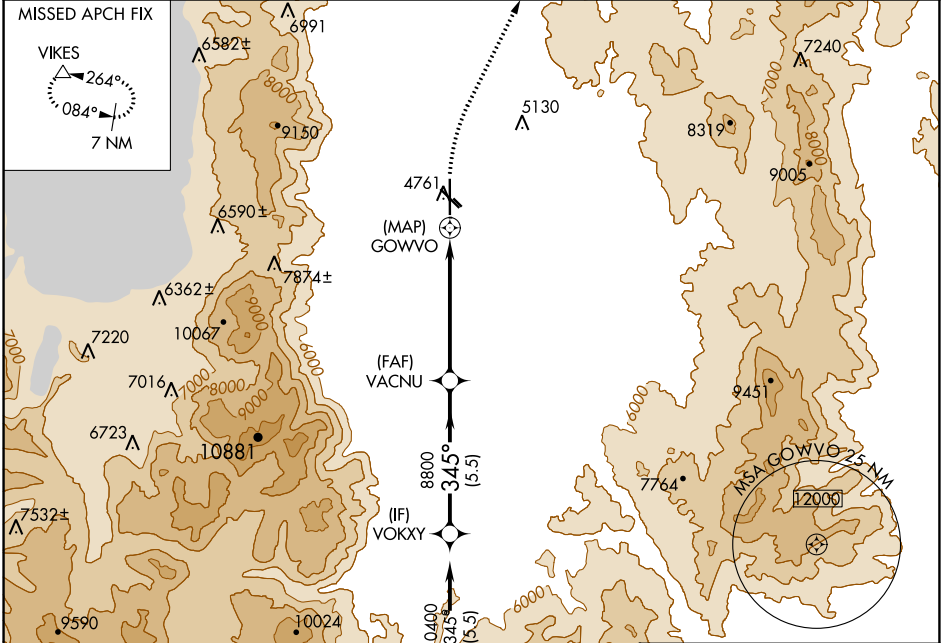
CATEGORY	A	B	C	D	
CIRCLING	6600-1¼ 1876 (1900-1¼)	6600-1½ 1876 (1900-1½)	6600-3	1876 (1900-3)	HIRL Rwy 16-34 REIL Rwy 16 and 34

APP CRS 345°	Rwy Idg TDZE Apt Elev N/A N/A 4724
------------------------	--

RNAV (GPS)-B

MINDEN-TAHOE (MEV)

RNP APCH.		MISSED APPROACH: Climbing right turn to 11000 direct VIKES and hold, continue climb-in-hold to 11000.	
<p>▼ Circling NA for Cat D southwest of Rwy 12 and 34. ▲ Circling Rwy 12L, 30R NA at night.</p>		AWOS-3PT 119.325	NORCAL APP CON 119.2 279.55
		CLNC DEL 133.25	UNICOM 123.05 (CTAF)



CATEGORY	A	B	C	D
C CIRCLING	6480-1¼ 1756 (1800-1¼)	6480-1½ 1756 (1800-1½)	6480-3	1756 (1800-3)

HIRL Rwy 16-34 **1**
REIL Rwy 16 and 34 **1**

SW-4, 18 MAY 2023 to 15 JUN 2023

SW-4, 18 MAY 2023 to 15 JUN 2023