

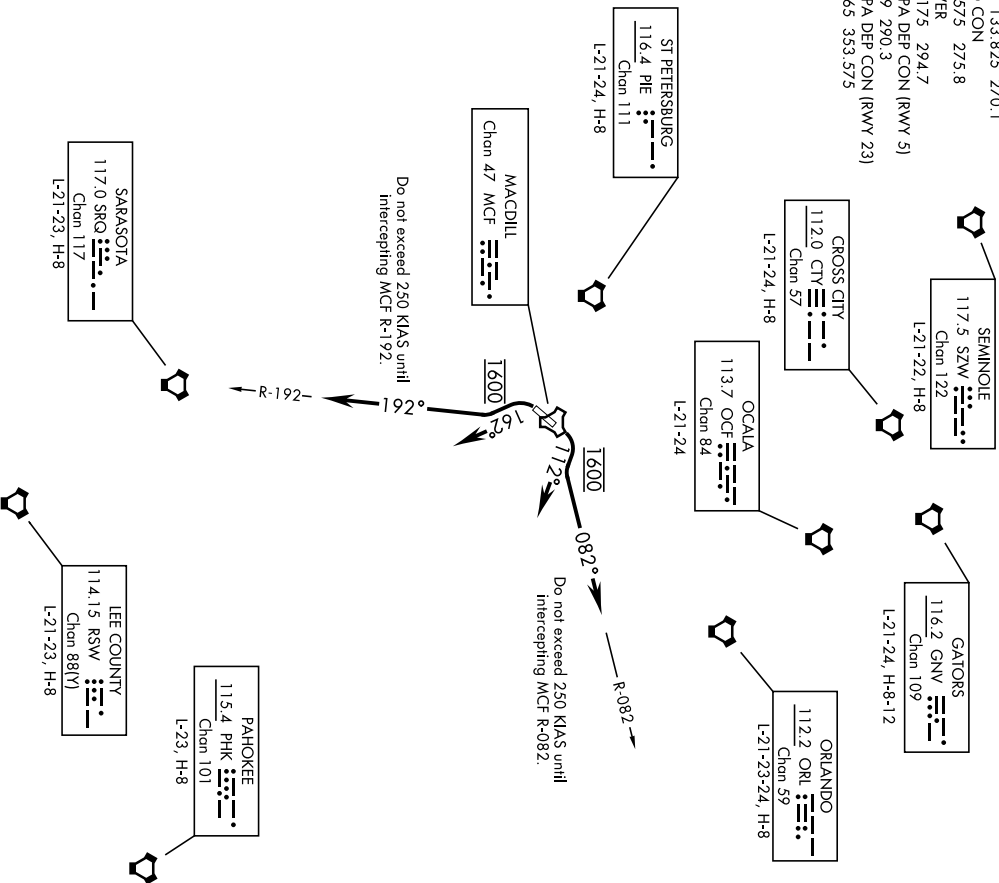
22111

# MACDILL ONE DEPARTURE (MCF1 • MCF)

AL-418 [USAF]

MACDILL AFB (KMCF)  
TAMPA, FLORIDA

ATIS 133.825 270.1  
 GND CON 118.575 275.8  
 TOWER 120.175 294.7  
 TAMPA DEP CON (RWY 5) 119.9 290.3  
 TAMPA DEP CON (RWY 23) 119.65 353.575



NOTE: Chart not to scale

NA for CAT E aircraft

## DEPARTURE ROUTE DESCRIPTION

**TAKEOFF RWY 5:** Climbing right turn heading 112°, maintain 1600, intercept MCF R-082 outbound, expect RADAR vectors. Expect clearance to filed altitude within 10 min after departure.

**TAKEOFF RWY 23:** Climbing left turn heading 162°, maintain 1600, intercept MCF R-192 outbound, expect RADAR vectors. Expect clearance to filed altitude within 10 min after departure.

# MACDILL ONE DEPARTURE (MCF1 • MCF)

Amth 1 31DEC20

TAMPA, FLORIDA  
MACDILL AFB (KMCF)