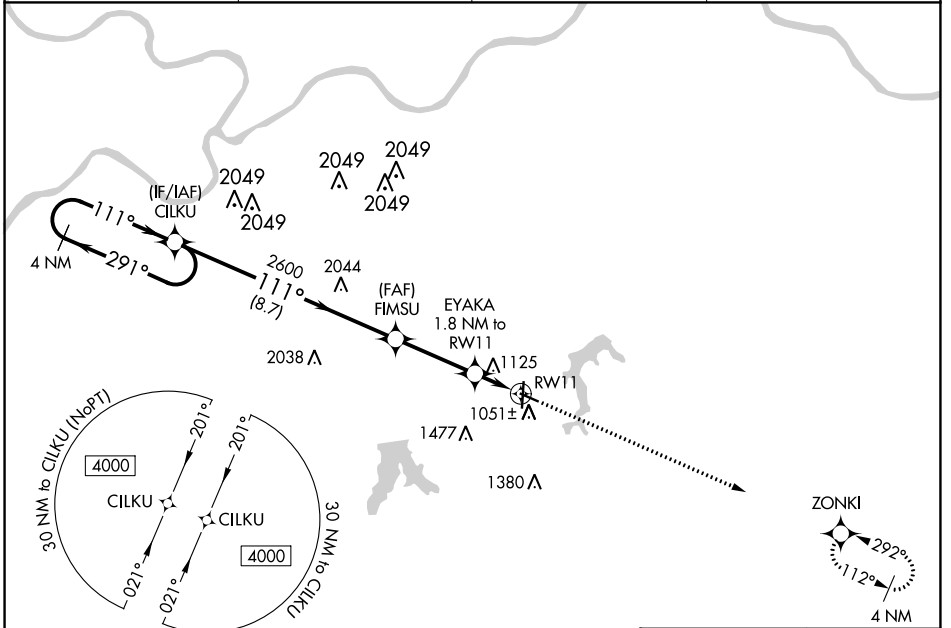


WAAS CH 99405 W11A	APP CRS 111°	Rwy Idg 4000 TDZE 1004 Apt Elev 1004
--	------------------------	---

RNAV (GPS) RWY 11

LEE'S SUMMIT MUNI (LXT)

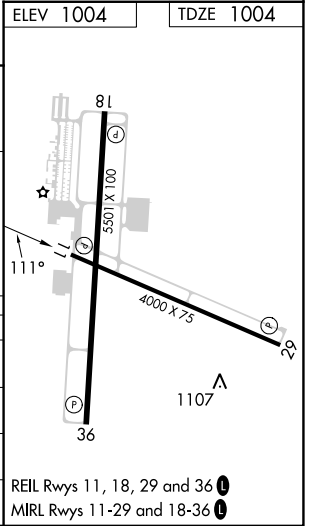
RNP APCH - GPS.		MISSED APPROACH: Climb to 3100 direct ZONKI and hold.	
<p>▼ For uncompensated Baro-VNAV systems, LNAV/VNAV NA below -17°C or above 54°C. Rwy 11 helicopter visibility reduction below ¾ SM NA.</p>			
ASOS 124.175	KANSAS CITY APP CON 118.4 307.35	CLNC DEL 118.45	UNICOM 122.8 (CTAF) 1



NC-3, 22 FEB 2024 to 21 MAR 2024

NC-3, 22 FEB 2024 to 21 MAR 2024

4 NM Holding Pattern		3100 ZONKI	
<p>4000 ← 291° → 111° →</p> <p>GP 3.00° TCH 45</p>		<p>2600</p> <p>1600</p> <p>1.1 NM to RWY 11</p>	
8.7 NM		3.1 NM	
0.7 NM		1.1 NM	
CATEGORY	A	B	C
LPV DA		1254-1	250 (300-1)
LNAV/VNAV DA		1381-1¼	377 (400-1¼)
LNAV MDA		1380-1	376 (400-1)
CIRCLING	1440-1	1540-1	1780-2¼
	436 (500-1)	536 (600-1)	776 (800-2¼)



WAAS CH 82204 W18A	APP CRS 181°	Rwy Idg TDZE Apt Elev	5501 999 1004
--	------------------------	-----------------------------	--

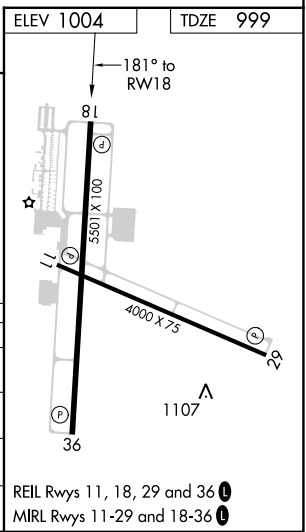
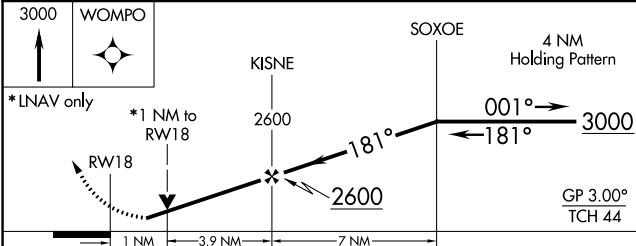
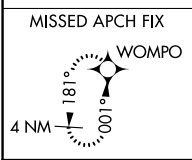
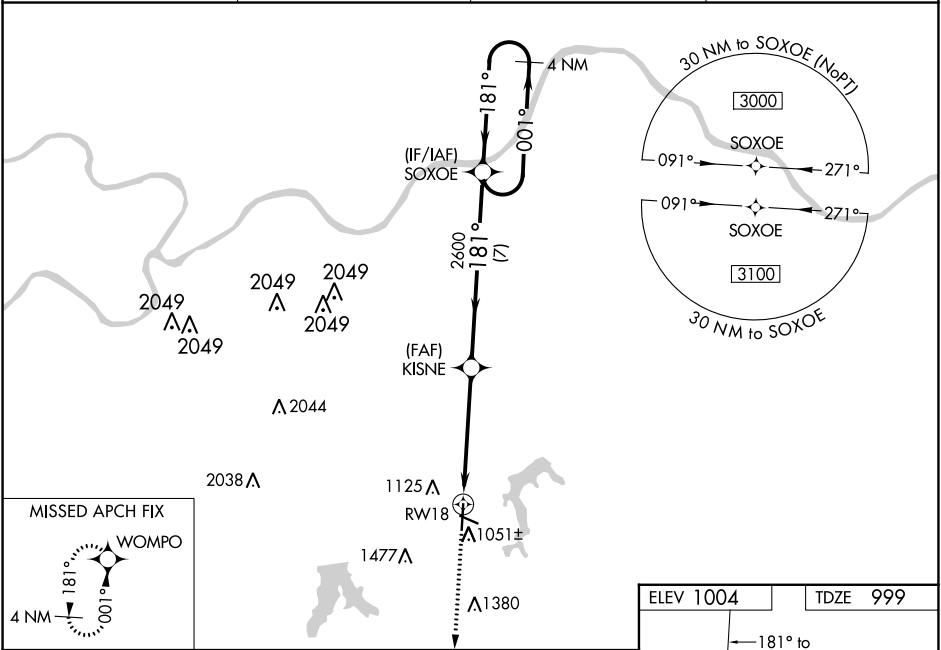
RNAV (GPS) RWY 18

LEE'S SUMMIT MUNI (LXT)

⚠ For uncompensated Baro-VNAV systems, LNAV/VNAV NA below -17°C (2°F) or above 54°C (130°F).
⚠ Rwy 18 helicopter visibility reduction below 3/4 SM NA. DME/DME RNP-0.3 NA. Baro-VNAV and VDP NA when using Charles B. Wheeler Downtown altimeter setting. When local altimeter setting not received, use Charles B. Wheeler Downtown altimeter setting: increase LPV DA to 1317 feet and all visibilities 1/8 SM; increase LNAV/VNAV DA to 1434 feet and all visibilities 1/4 SM; increase all MDA 80 feet and LNAV visibility Cat C and D 3/8 SM, Circling Cats C and D 1/4 SM.

MISSED APPROACH:
Climb to 3000 direct WOMPO and hold.

ASOS 124.175	KANSAS CITY APP CON 118.4 307.35	CLNC DEL 118.45	UNICOM 122.8 (CTAF) 0
------------------------	--	---------------------------	---------------------------------



CATEGORY	A	B	C	D
LPV DA		1249-3/4	250 (300-3/4)	
LNAV/VNAV DA		1366-1	367 (400-1)	
LNAV MDA		1360-1	361 (400-1)	
CIRCLING	1440-1 436 (500-1)	1540-1 536 (600-1)	1780-2 1/4 776 (800-2 1/4)	1780-2 1/2 776 (800-2 1/2)

NC-3, 22 FEB 2024 to 21 MAR 2024

NC-3, 22 FEB 2024 to 21 MAR 2024

WAAS CH 48905 W29A	APP CRS 291°	Rwy Idg TDZE 1004 Apt Elev 1004
--	------------------------	---

RNAV (GPS) RWY 29

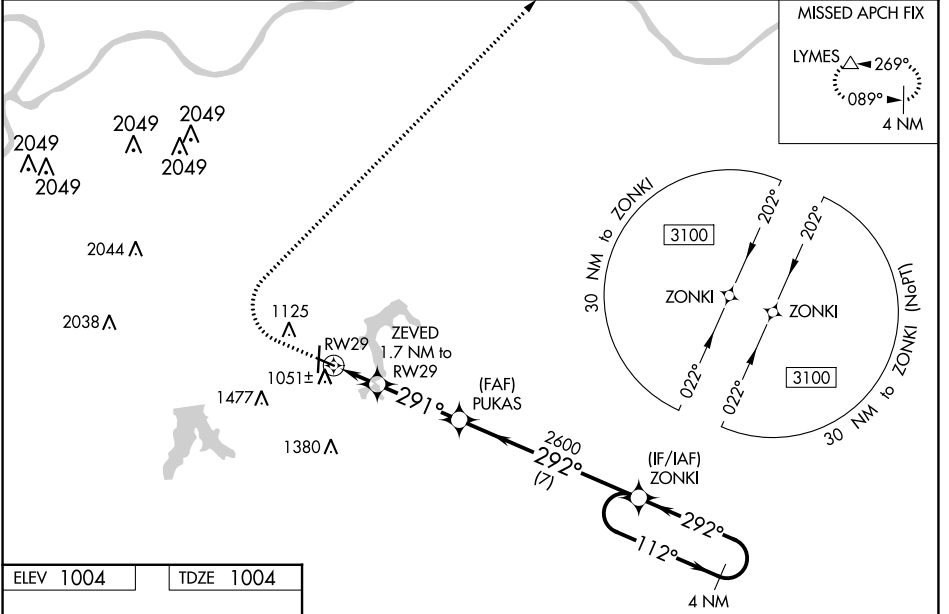
LEE'S SUMMIT MUNI (LXT)

RNP APCH - GPS.

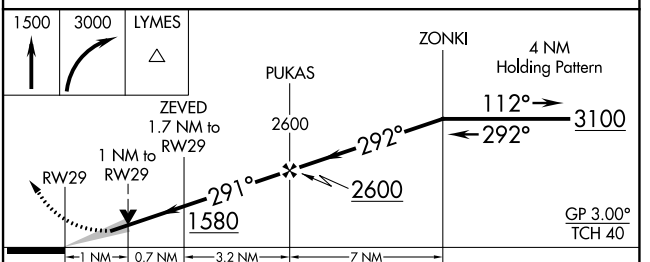
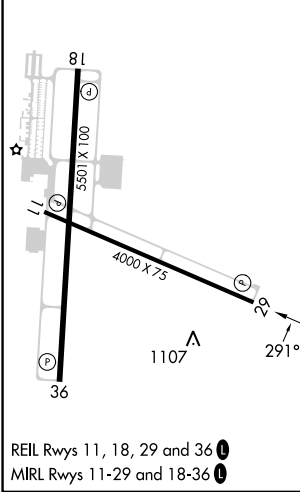
For uncompensated Baro-VNAV systems, LNAV/VNAV NA below -17°C or above 54°C. VDP and Baro-VNAV NA when using Charles B. Wheeler Downtown altimeter setting. When local altimeter setting not received, use Charles B. Wheeler Downtown altimeter setting: increase LPV DA to 1322 feet; increase LNAV/VNAV DA to 1359 feet; increase all MDA 80 feet and visibility Cats C and D ½ SM.

MISSED APPROACH: Climb to 1500 then climbing right turn to 3000 direct LYMES and hold.

ASOS 124.175	KANSAS CITY APP CON 118.4 307.35	CLNC DEL 118.45	UNICOM 122.8 (CTAF) 0
------------------------	--	---------------------------	---------------------------------



ELEV 1004	TDZE 1004
-----------	-----------



CATEGORY	A	B	C	D
LPV DA		1254-1	250 (300-1)	
LNAV/VNAV DA		1291-1	287 (300-1)	
LNAV MDA		1360-1	356 (400-1)	
<input checked="" type="checkbox"/> CIRCLING	1440-1 436 (500-1)	1540-1 536 (600-1)	1780-2¼ 776 (800-2¼)	1780-2½ 776 (800-2½)

NC-3, 22 FEB 2024 to 21 MAR 2024

NC-3, 22 FEB 2024 to 21 MAR 2024

WAAS CH 48805 W36A	APP CRS 001°	Rwy Idg 5501 TDZE 997 Apt Elev 1004
--	------------------------	--

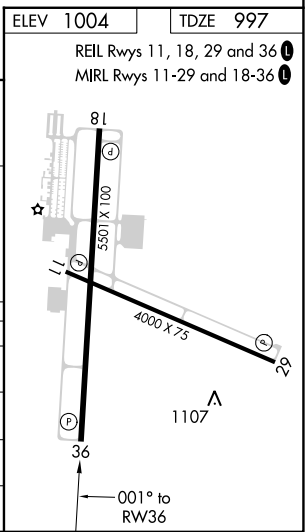
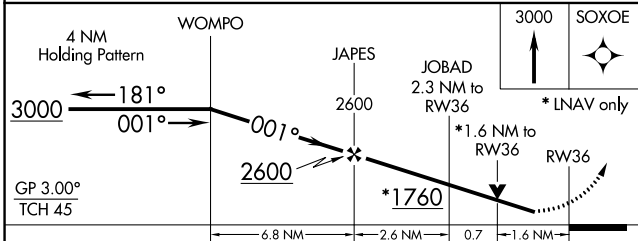
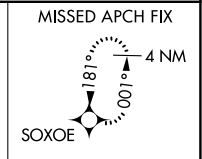
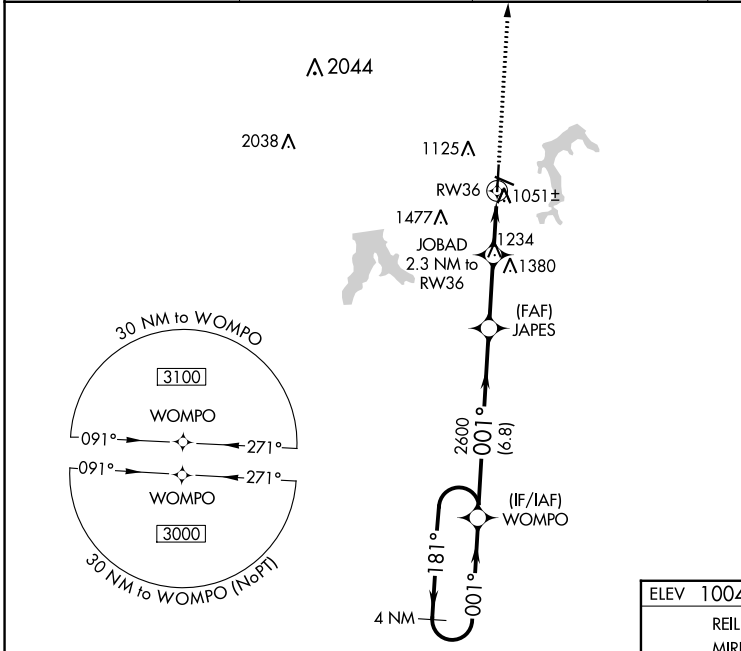
RNAV (GPS) RWY 36

LEE'S SUMMIT MUNI (LXT)

⚠ For uncompensated Baro-VNAV systems, LNAV/VNAV NA below -17°C (2°F) or above 54°C (130°F). Rwy 36 helicopter visibility reduction below ¼ SM NA. DME/DME RNP-0.3 NA. VDP and Baro-VNAV NA when using Charles B. Wheeler Downtown altimeter setting. When local altimeter setting not received, use Charles B. Wheeler Downtown altimeter setting: increase LPV DA to 1374 feet and all visibilities ½ SM; increase LNAV/VNAV to 1367 feet and all visibilities ½ SM; increase all MDA 80 feet and LNAV visibility Cats C and D ½ SM, Circling Cats C and D ½ SM.

MISSED APPROACH: Climb to 3000 direct SOXOE and hold.

ASOS 124.175	KANSAS CITY APP CON 118.4 307.35	CLNC DEL 118.45	UNICOM 122.8 (CTAF) 0
------------------------	--	---------------------------	---------------------------------



CATEGORY	A	B	C	D
LPV DA	1306-7/8		309 (400-7/8)	
LNAV/VNAV DA	1299-7/8		302 (300-7/8)	
LNAV MDA	1540-1	543 (600-1)	1540-1 5/8	543 (600-1 5/8)
C CIRCLING	1540-1	536 (600-1)	1780-2 1/4 776 (800-2 1/4)	1780-2 1/2 776 (800-2 1/2)

NC-3, 22 FEB 2024 to 21 MAR 2024

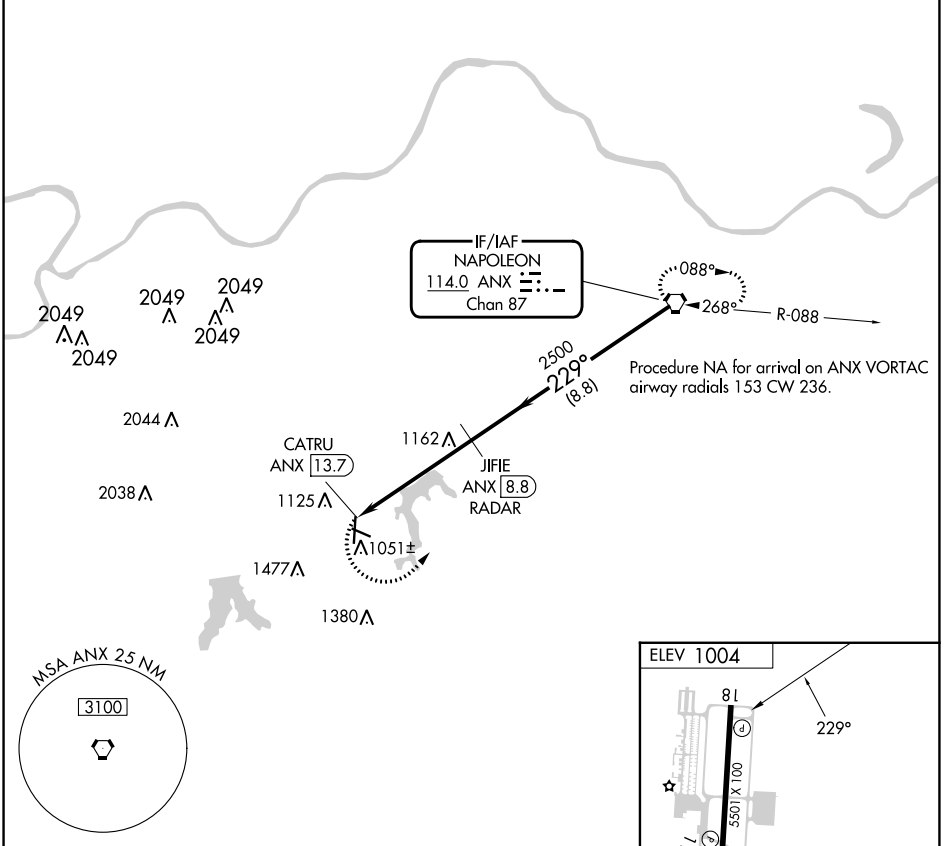
NC-3, 22 FEB 2024 to 21 MAR 2024

VORTAC ANX 114.0 Chan 87	APP CRS 229°	Rwy Idg TDZE Apt Elev 1004	N/A N/A
--	------------------------	--	--------------------------

VOR-A
LEE'S SUMMIT MUNI (LXT)

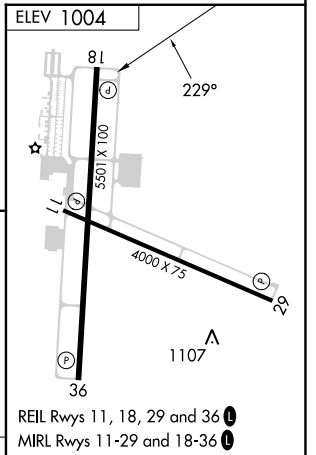
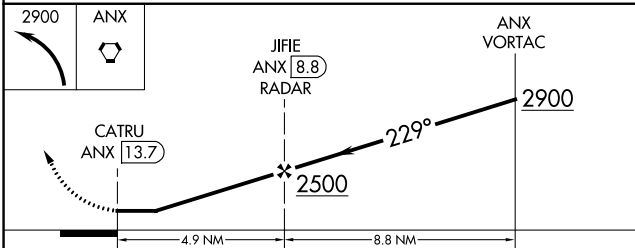
<p>∇ DME or RADAR required. When local altimeter setting not received, use Charles B. Wheeler Downtown altimeter setting and increase all MDA 80 feet, and Cat C and D visibility ¼ mile.</p>	<p>MISSED APPROACH: Climbing left turn to 2900 direct ANX VORTAC and hold.</p>
--	---

ASOS 124.175	KANSAS CITY APP CON 118.4 307.35	CLNC DEL 118.45	UNICOM 122.8 (CTAF) 0
------------------------	--	---------------------------	--



NC-3, 22 FEB 2024 to 21 MAR 2024

NC-3, 22 FEB 2024 to 21 MAR 2024



	CATRU ANX [13.7]		JIFIE ANX [8.8] RADAR	ANX VORTAC													
	4.9 NM		8.8 NM														
CATEGORY	A	B	C	D	FAF to MAP 4.9 NM												
C CIRCLING	1440-1 436 (500-1)	1540-1 536 (600-1)	1780-2¼ 776 (800-2¼)	1780-2½ 776 (800-2½)	<table border="1"> <tr> <td>Knots</td> <td>60</td> <td>90</td> <td>120</td> <td>150</td> <td>180</td> </tr> <tr> <td>Min:Sec</td> <td>4:54</td> <td>3:16</td> <td>2:27</td> <td>1:58</td> <td>1:38</td> </tr> </table>	Knots	60	90	120	150	180	Min:Sec	4:54	3:16	2:27	1:58	1:38
Knots	60	90	120	150	180												
Min:Sec	4:54	3:16	2:27	1:58	1:38												