

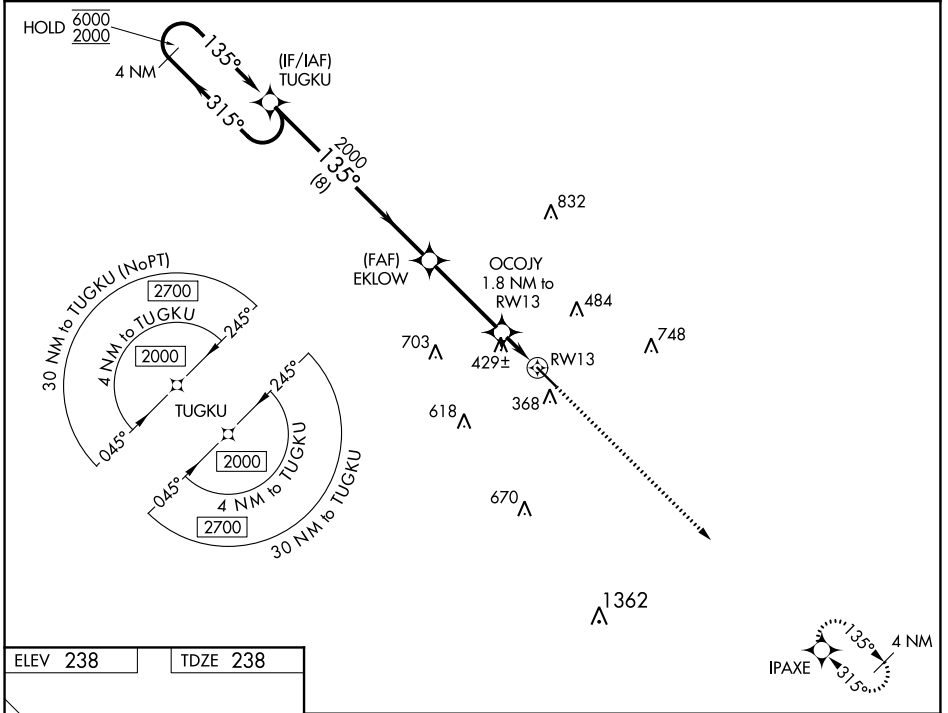
WAAS CH 45704 W13A	APP CRS 135°	Rwy Idg 5513 TDZE 238 Apt Elev 238
---------------------------------	------------------------	---

RNAV (GPS) RWY 13

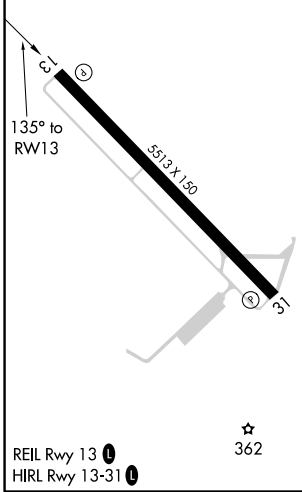
HESLER-NOBLE FIELD (LUL)

RNP APCH.	MISSED APPROACH: Climb to 2000 direct IPAXE and hold.
▼ For uncompensated Baro-VNAV systems, LNAV/VNAV NA below -15°C or above 54°C.	

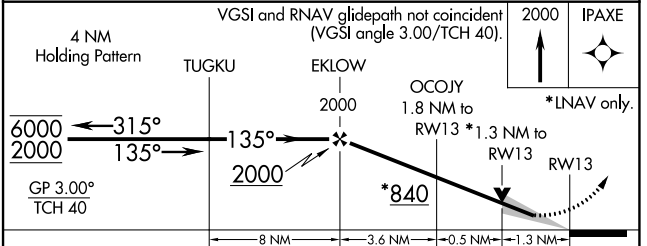
AWOS-3PT 119.275	HOUSTON CENTER 126.8 327.8	UNICOM 123.05 (CTAF) 0
----------------------------	--------------------------------------	----------------------------------



ELEV 238	TDZE 238
----------	----------



REIL Rwy 13 0
HIRL Rwy 13-31 0



CATEGORY	A	B	C	D
LPV DA	488-1		250 (300-1)	
LNAV/VNAV DA	759-1¾		521 (600-1¾)	
LNAV MDA	680-1	442 (500-1)	680-1¾ 442 (500-1¾)	680-2 442 (500-2)
<input checked="" type="checkbox"/> CIRCLING	700-1 462 (500-1)	800-1 562 (600-1)	1040-2¼ 802 (900-2¼)	1060-2¾ 822 (900-2¾)

SC-4, 19 MAY 2022 to 16 JUN 2022

SC-4, 19 MAY 2022 to 16 JUN 2022

WAAS CH 86404 W31A	APP CRS 315°	Rwy Idg 5513 TDZE 238 Apt Elev 238
--	------------------------	---

RNAV (GPS) RWY 31

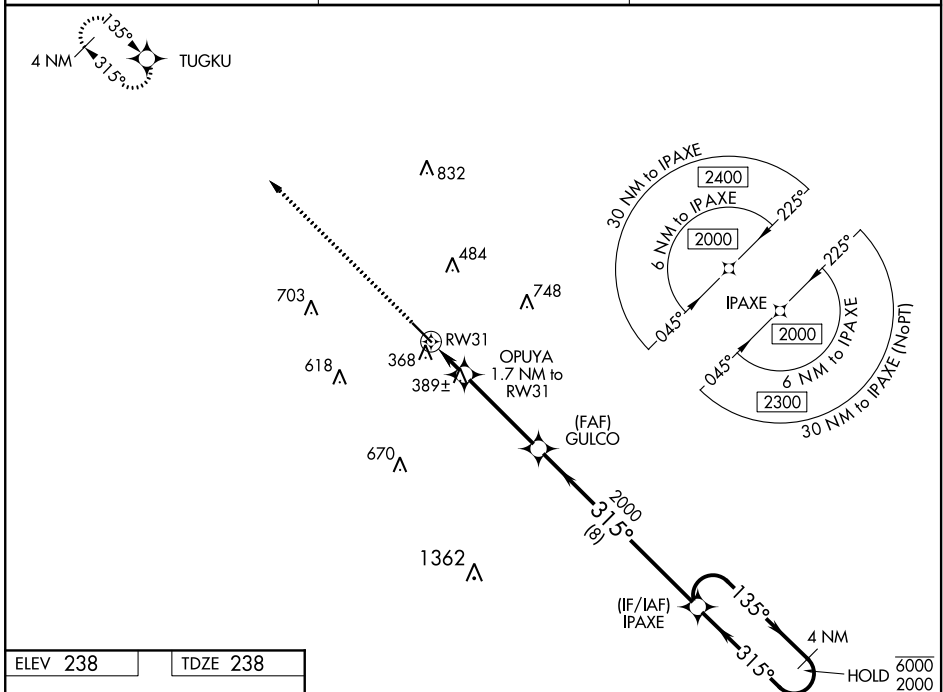
HESLER-NOBLE FIELD (LUL)

RNP APCH.

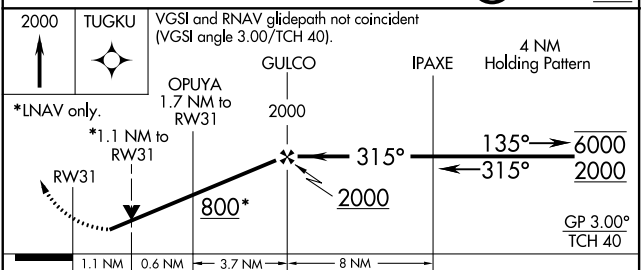
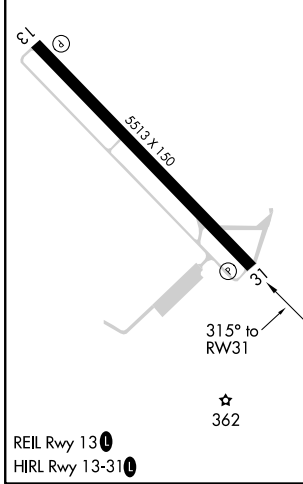
▼ Rwy 31 helicopter visibility reduction below 3/4 SM NA.
▲ For uncompensated Baro-VNAV systems, LNAV/VNAV NA below -15°C or above 54°C.

MISSED APPROACH: Climb to 2000 direct TUGKU and hold.

AWOS-3PT 119.275	HOUSTON CENTER 126.8 327.8	UNICOM 123.05 (CTAF) 0
----------------------------	--------------------------------------	----------------------------------



ELEV 238	TDZE 238
----------	----------



CATEGORY	A	B	C	D
LPV DA	524-1		286 (300-1)	
LNAV/VNAV DA	554-1		316 (400-1)	
LNAV MDA	640-1 402 (500-1)		640-1 1/8 402 (500-1 1/8)	
C CIRCLING	700-1 462 (500-1)	800-1 562 (600-1)	1040-2 1/4 802 (900-2 1/4)	1060-2 3/4 822 (900-2 3/4)

SC-4, 19 MAY 2022 to 16 JUN 2022

SC-4, 19 MAY 2022 to 16 JUN 2022

LAUREL, MISSISSIPPI

AL-5185 (FAA)

20254

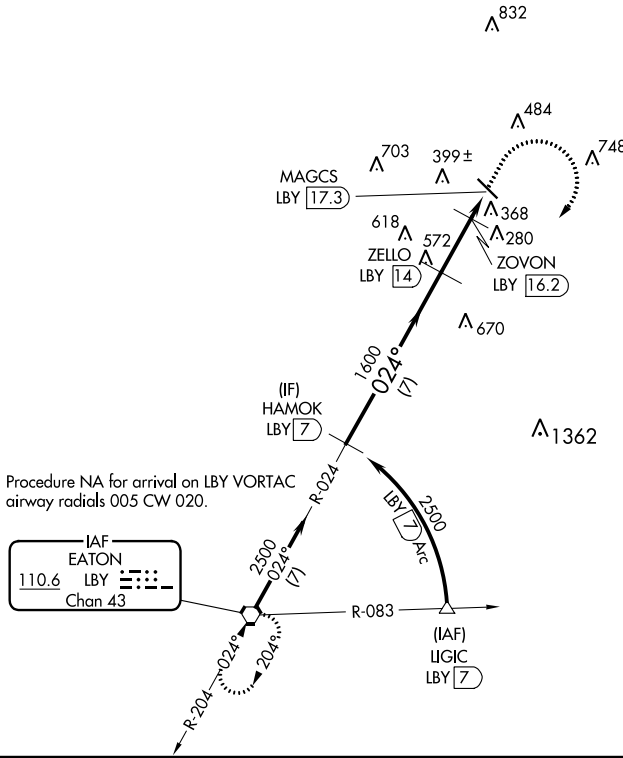
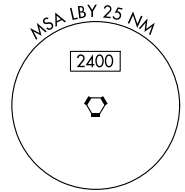
VORTAC LBY 110.6 Chan 43	APP CRS 024°	Rwy Idg TDZE Apt Elev	N/A N/A 238
--	------------------------	-----------------------------	--

VOR-A

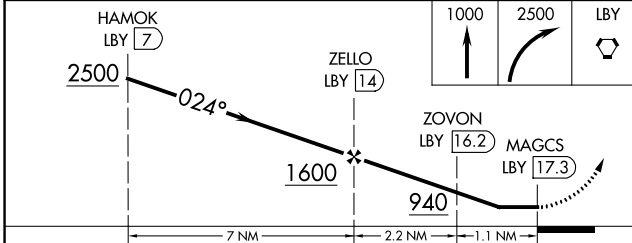
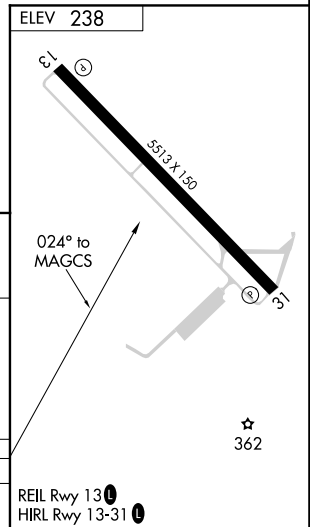
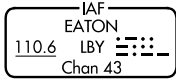
HESLER-NOBLE FIELD (LUL)

DME required.		MISSED APPROACH: Climb to 1000, then climbing right turn to 2500 direct LBY VORTAC and hold.
---------------	--	--

AWOS-3PT 119.275	HOUSTON CENTER 126.8 327.8	UNICOM 123.05 (CTAF)
----------------------------	--------------------------------------	--------------------------------



Procedure NA for arrival on LBY VORTAC airway radials 005 CW 020.



CATEGORY	A	B	C	D
CIRCLING	700-1 462 (500-1)	800-1 562 (600-1)	1040-2 ³ / ₄ 802 (900-2 ¹ / ₄)	1060-2 ³ / ₄ 822 (900-2 ³ / ₄)

LAUREL, MISSISSIPPI

Amdt 6 23APR20

31°40'N-89°10'W

HESLER-NOBLE FIELD (LUL)

VOR-A

SC-4, 19 MAY 2022 to 16 JUN 2022

SC-4, 19 MAY 2022 to 16 JUN 2022