

18088

DREAM SIX DEPARTURE (DREAM6 • DREAM)

NELLIS AFB (KLSV)
LAS VEGAS, NEVADA

ATIS 270.1
CLNC DEL
120.9 289.4
GND CON
121.8 275.8
NELLIS TOWER
132.5 327.0
NELLIS DEF CON
135.1 385.4

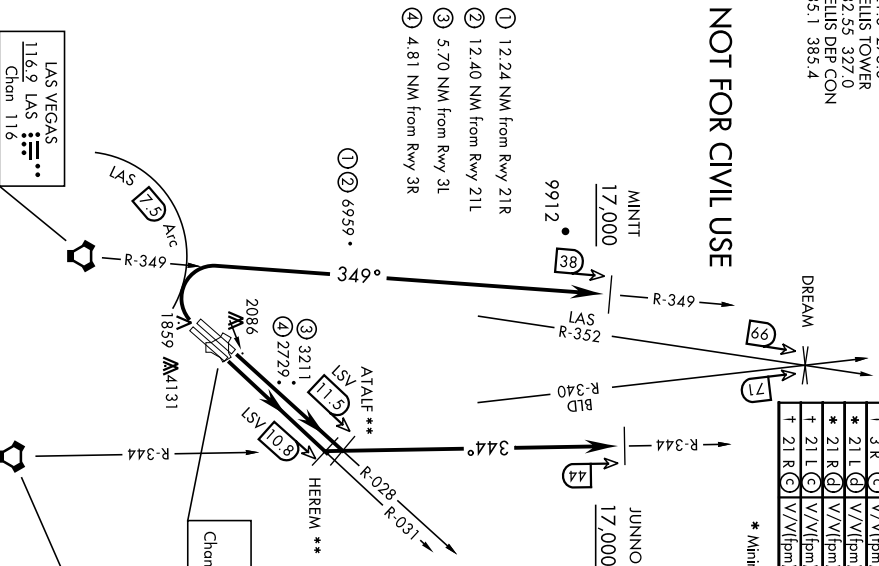
SHL-227 [USAFI]

Rwy	Knobs	60	120	180	240	300	360
* 3 L (A)	V/V(fpm)	269	538	807	1076	1345	1614
* 3 R (B)	V/V(fpm)	229	458	687	916	1145	1374
† 3 L (C)	V/V(fpm)	498	996	1494	1992	2490	2988
† 3 R (C)	V/V(fpm)	496	992	1488	1984	2480	2976
* 21 L (D)	V/V(fpm)	389	778	1167	1556	1945	2334
* 21 R (D)	V/V(fpm)	395	790	1185	1580	1975	2370
† 21 L (C)	V/V(fpm)	453	906	1359	1812	2265	2718
† 21 R (C)	V/V(fpm)	457	914	1371	1828	2285	2742

* Minimum † ATC Climb Rate

- (A) to 3400
- (B) to 3000
- (C) to 17,000
- (D) to 8500

NOT FOR CIVIL USE



CAUTION: If unable to comply with restrictions advise ATC prior to departure.

** Lead DME:
ATAIF - LSV 9.5
HEREM - LSV 8.8

DEPARTURE ROUTE DESCRIPTION

▼ **TAKE-OFF RWY 3L:** Fly runway heading to intercept the LSV TACAN R-028 then direct ATALF, intercept the BLD VORTAC R-344 then direct JUNNO, cross JUNNO at or above 17,000, then via assigned route.
TAKE-OFF RWY 3R: Fly runway heading to intercept the LSV TACAN R-031 then direct HEREM, intercept the BLD VORTAC R-344 then direct JUNNO, cross JUNNO at or above 17,000, then via assigned route.

TAKE-OFF RWY 21L/R: Turn right to intercept LAS VORTAC R-349 outbound. Remain North of LAS 7.5 DME turning Northbound. Intercept LAS R-349 between 5000 and 6000, do not proceed West of LAS R-349. Cross MINNT at above 17,000, then via assigned route.
NOISE ABATEMENT PROCEDURES: Fly LAW Nellis Noise Abatement instructions published in AP/1.

DREAM SIX DEPARTURE (DREAM6 • DREAM)

LAS VEGAS, NEVADA
NELLIS AFB (KLSV)
Amth 5 29MARI18

20086

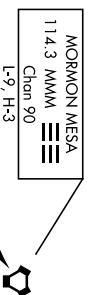
MORMON MESA SEVEN DEPARTURE (MMM7 • MMM)

NELLIS AFB (KLSV)
LAS VEGAS, NEVADA

SHL-227 [USAF]

ATIS 2270.1
CLINC DEL
120.9 289.4
GND CON
121.8 275.8
NELLIS TOWER
132.55 327.0
NELLIS DEP CON
135.1 385.4
LOS ANGELES CENTER
124.2 134.65 307.9 343.6

**RADAR REQUIRED
ABOVE FL190**



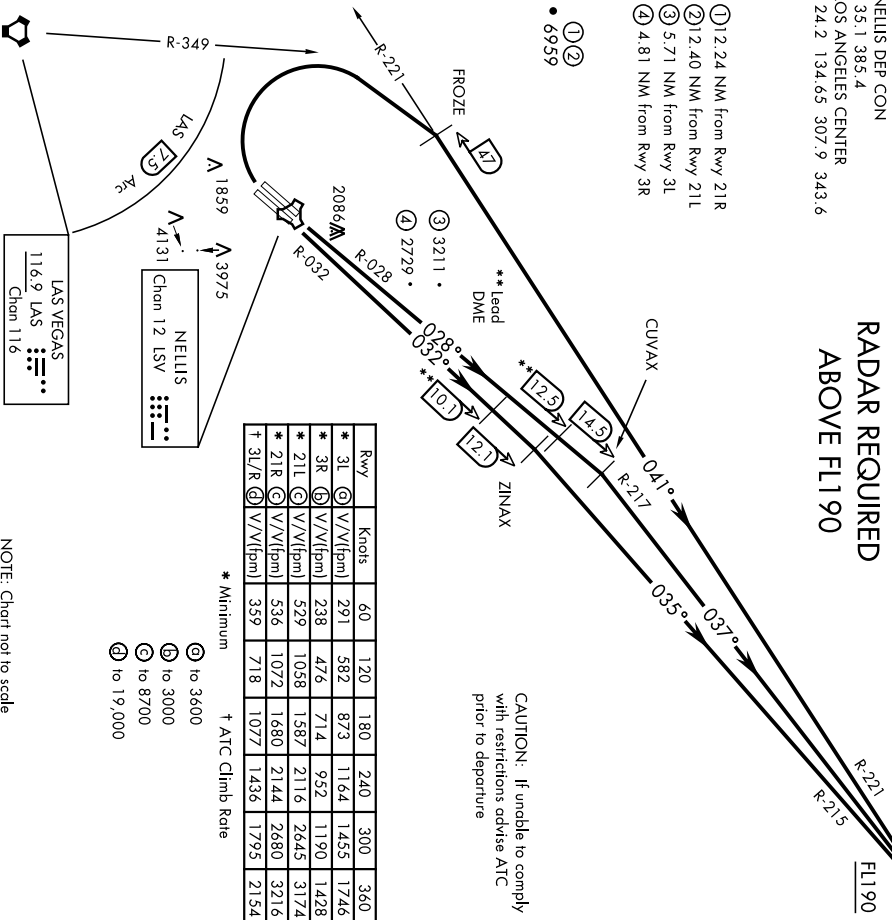
- ① 1.24 NM from Rwy 21R
- ② 12.40 NM from Rwy 21L
- ③ 5.71 NM from Rwy 31L
- ④ 4.81 NM from Rwy 3R
- ①②
- 6959

CAUTION: If unable to comply with restrictions advise ATC prior to departure

Rwy	Knots	60	120	180	240	300	360
* 3L	V/V(fpm)	291	582	873	1164	1455	1746
* 3R	V/V(fpm)	238	476	714	952	1190	1428
* 21L	V/V(fpm)	529	1058	1587	2116	2645	3174
* 21R	V/V(fpm)	536	1072	1680	2144	2680	3216
† 3L/R	V/V(fpm)	359	718	1077	1436	1795	2154

* Minimum † ATC Climb Rate

- ⓐ to 3600
- ⓑ to 3000
- ⓒ to 8700
- ⓓ to 19,000



NOTE: Chart not to scale

DEPARTURE ROUTE DESCRIPTION

TAKE-OFF Rwy 3L: Fly runway heading to intercept LSV TACAN R-028 then direct CUVAX, intercept the MMM VORTAC R-217 then direct MMM climbing to FL190 or as assigned, then via assigned route.

TAKE-OFF Rwy 3R: Fly runway heading to intercept LSV TACAN R-032 then direct ZINAX, intercept the MMM VORTAC R-215 then direct MMM climbing to FL190 or as assigned, then via assigned route.

TAKE-OFF Rwy 21L/R: Turn right to intercept MMM VORTAC R-221 prior to MMM 47 DME (FROZE), remain north of the LAS VORTAC 7.5 DME, remain East of LAS R-349, intercept MMM R-221 then direct MMM, cross MMM at or above FL190 then via assigned route.

NOISE ABATEMENT PROCEDURES: Fly Law Nellis Noise Abatement instructions published in AP/1.

MORMON MESA SEVEN DEPARTURE (MMM7 • MMM)

LAS VEGAS, NEVADA
NELLIS AFB (KLSV)

Amnd 6 26MAR20