

APP CRS	Rwy Idg	4000
173°	TDZE	915
	Apt Elev	915

RNAV (GPS) RWY 17

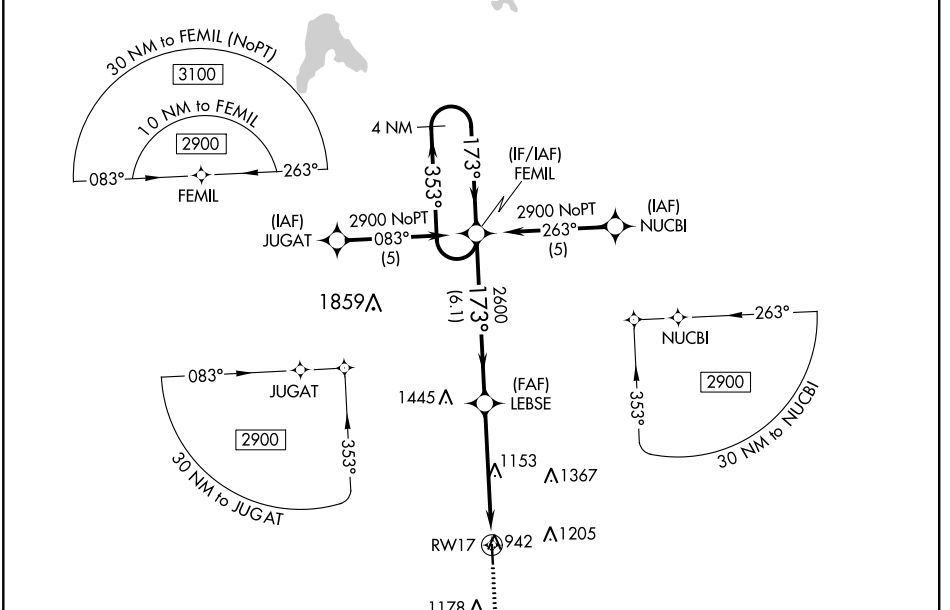
LAWRENCE SMITH MEML (L.R.Y)

RNP APCH.

When local altimeter setting not received, use Charles B Wheeler Downtown altimeter setting: increase all MDAs 100 feet and visibility Cat C ¼ mile. Procedure NA at night. Rwy 17 helicopter visibility reduction below 1 SM NA.

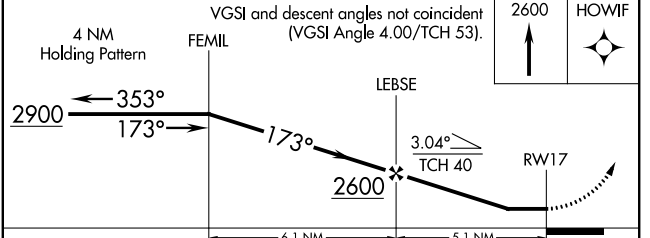
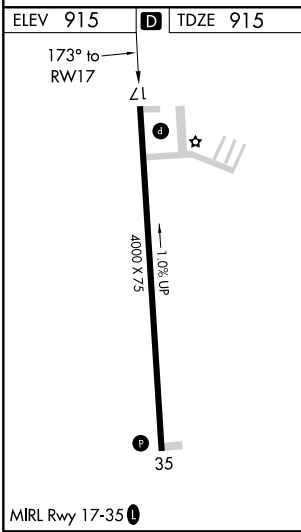
MISSED APPROACH: Climb to 2600 direct HOWIF and hold.

AWOS-3PT 119.975	KANSAS CITY CENTER 125.55 327.0	UNICOM 123.0 (CTAF) 0
----------------------------	---	---------------------------------



NC-3, 09 SEP 2021 to 07 OCT 2021

NC-3, 09 SEP 2021 to 07 OCT 2021



CATEGORY	A	B	C	D
LNAV MDA	1420-1	505 (600-1)	1420-1½ 505 (600-1½)	NA
CIRCLING	1420-1 505 (600-1)	1460-1 545 (600-1)	1520-1¾ 605 (700-1¾)	NA

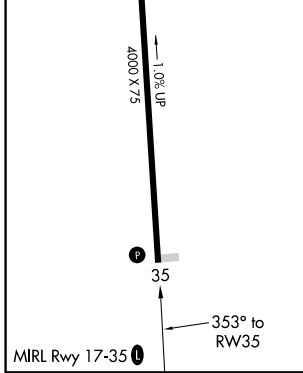
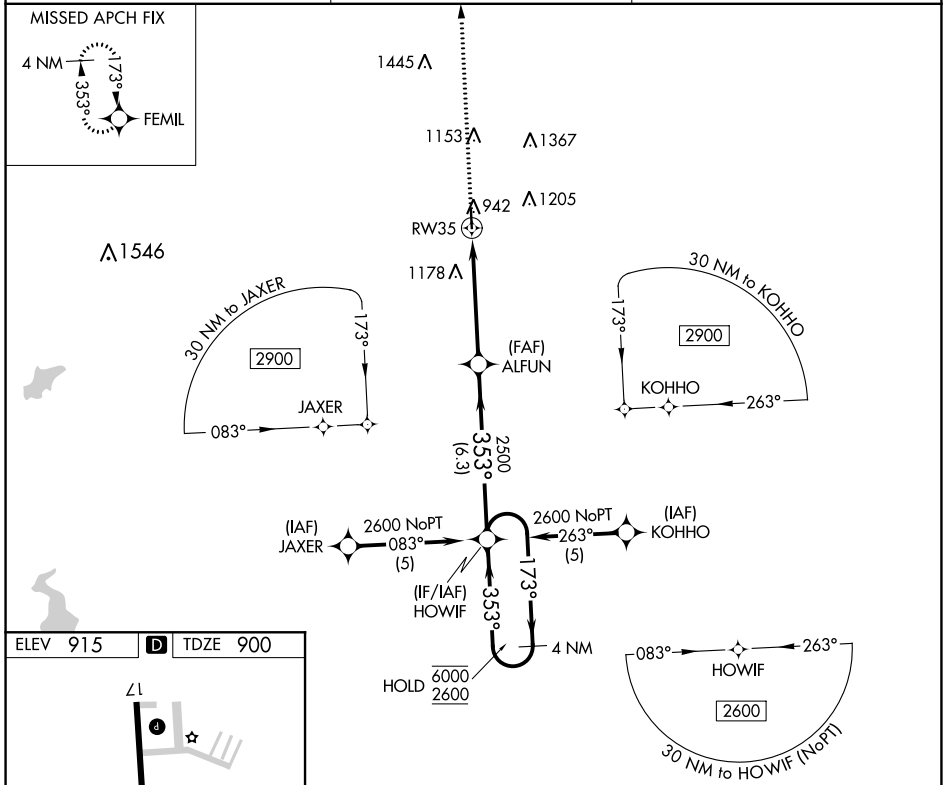
APP CRS	Rwy Idg	4000
353°	TDZE	900
	Apt Elev	915

RNAV (GPS) RWY 35

LAWRENCE SMITH MEML (L.R.Y)

RNP APCH.	MISSED APPROACH: Climb to 3000 direct FEMIL and hold.
<p>Procedure NA at night.</p> <p>Rwy 35 helicopter visibility reduction below 1 SM NA.</p>	

AWOS-3PT 119.975	KANSAS CITY CENTER 125.55 327.0	UNICOM 123.0 (CTAF)
----------------------------	---	-------------------------------



3000	FEMIL	VGSI and descent angles not coincident (VGSI Angle 3.00/TCH 47).	
		HOWIF	4 NM Holding Pattern
		ALFUN	173° → 6000
		RW35	← 353° 2600
			353°
			3.04° TCH 40
			2500
			4.9 NM
			6.3 NM
CATEGORY	A	B	C
LNAV MDA	1380-1	480 (500-1)	1380-1 3/8 480 (500-1 3/8)
CIRCLING	1400-1 485 (500-1)	1460-1 545 (600-1)	1520-1 3/4 605 (700-1 3/4)
			NA
			NA

NC-3, 09 SEP 2021 to 07 OCT 2021

NC-3, 09 SEP 2021 to 07 OCT 2021