

LOC/DME I-LOZ 110.9 Chan 46	APP CRS 057°	Rwy Idg TDZE 1212 Apt Elev 1212	5000
---	------------------------	---	-------------

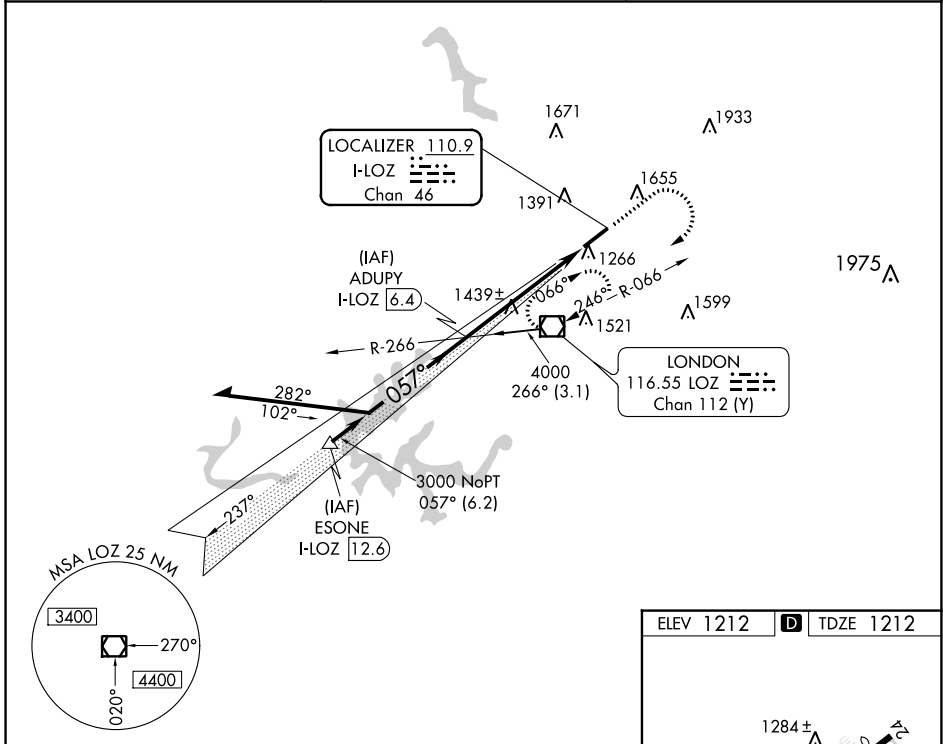
ILS or LOC RWY 6

LONDON/CORBIN/MAGEE (LOZ)

⚠ Visibility reduction by helicopters NA. VDP NA when using Somerset altimeter setting. When local altimeter setting not received, use Somerset altimeter setting: increase DA to 1562 feet and all visibility ¼ SM; increase all MDAs 100 feet and S-LOC 6 Cat C ¼ SM, Cat D ½ SM, Circling Cat C/D ¼ SM.

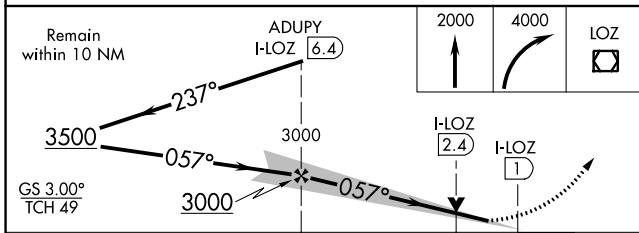
MISSED APPROACH: Climb to 2000 then climbing right turn to 4000 direct LOZ VOR/DME and hold, continue climb-in-hold to 4000.

ASOS 119.075	INDIANAPOLIS CENTER 124.625 371.925	UNICOM 123.0 (CTAF)
------------------------	---	-------------------------------



SE-1, 22 FEB 2024 to 21 MAR 2024

SE-1, 22 FEB 2024 to 21 MAR 2024



ELEV 1212	D	TDZE 1212
-----------	----------	-----------

This diagram shows the final approach segment:

- Altitude 1284± at the start of the 5.4 NM segment.
- Altitude 1273± at the FAF.
- Altitude 1237 at the runway end.
- Distance of 5.4 NM from FAF.

MIRL Rwy 6-24	Ⓡ				
REIL Rwys 6 and 24	Ⓡ				
FAF to MAP 5.4 NM					
Knots	60	90	120	150	180
Min:Sec	5:24	3:36	2:42	2:10	1:48

CATEGORY	A	B	C	D
S-ILS 6		1462-1	250 (300-1)	
S-LOC 6	1720-1	508 (600-1)	1720-1½	508 (600-1½)
CIRCLING	1780-1 568 (600-1)	2040-1¼ 828 (900-1¼)	2040-2½ 828 (900-2½)	2040-2¾ 828 (900-2¾)

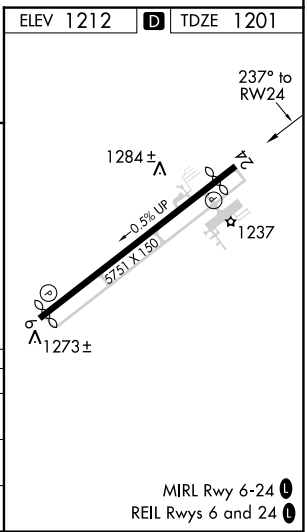
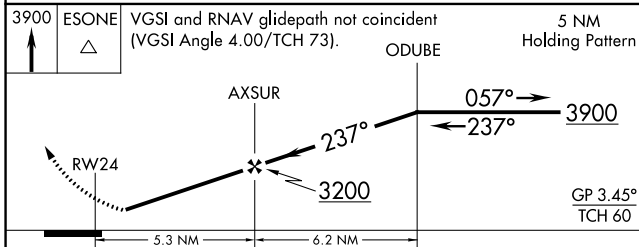
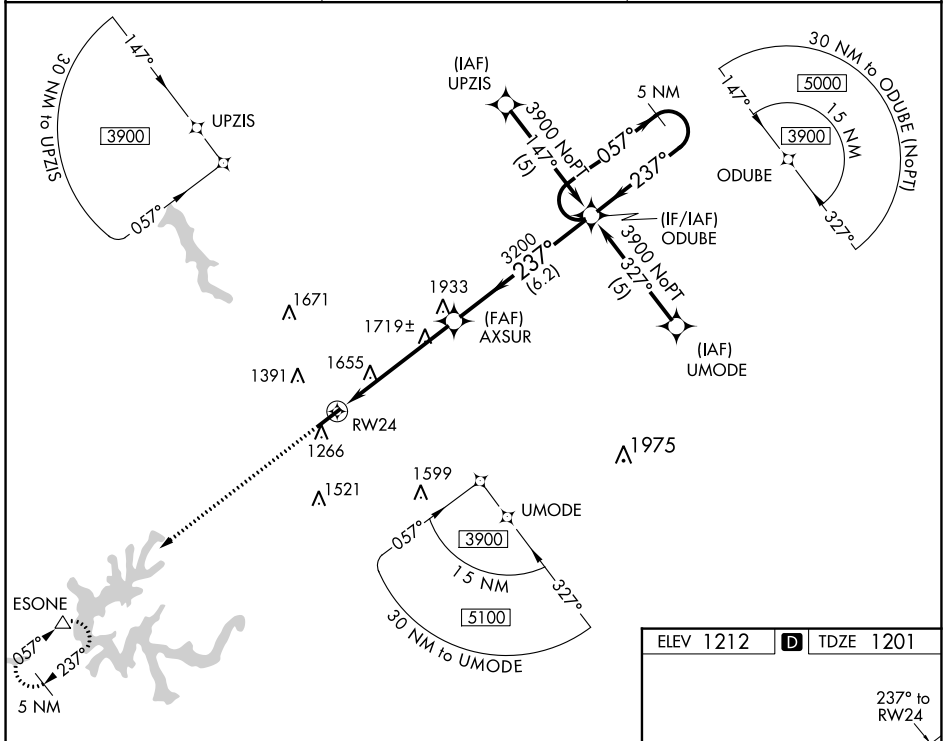
WAAS CH 78108 W24A	APP CRS 237°	Rwy Idg TDZE Apt Elev	5200 1201 1212
---------------------------------	------------------------	-----------------------------	---

RNAV (GPS) RWY 24

LONDON/CORBIN/MAGEE (LOZ)

RNP APCH.	<p>Visibility reduction by helicopters NA. When local altimeter setting not received, use Somerset altimeter setting: increase LPV DA to 1610 feet and visibility all Cats ¼ SM; increase all MDAs 100 feet and LNAV Cats C/D and Circling Cats A/C/D visibility ½ SM.</p>	MISSED APPROACH: Climb to 3900 direct ESONE and hold.
-----------	--	--

ASOS 119.075	INDIANAPOLIS CENTER 124.625 371.925	UNICOM 123.0 (CTAF) 0
------------------------	---	--



CATEGORY	A	B	C	D
LPV DA	1510-1 309 (300-1)			NA
LNAV MDA	1980-1 779 (800-1)	1980-1¼ 779 (800-1¼)	1980-2¼ 779 (800-2¼)	1980-2½ 779 (800-2½)
CIRCLING	1980-1 768 (800-1)	2040-1¼ 828 (900-1¼)	2040-2½ 828 (900-2½)	2040-2¾ 828 (900-2¾)

SE-1, 22 FEB 2024 to 21 MAR 2024

SE-1, 22 FEB 2024 to 21 MAR 2024

WAAS CH 65799 W06A	APP CRS 057°	Rwy Idg TDZE Apt Elev	5000 1212 1212
--	------------------------	-----------------------------	---

RNAV (GPS) RWY 6

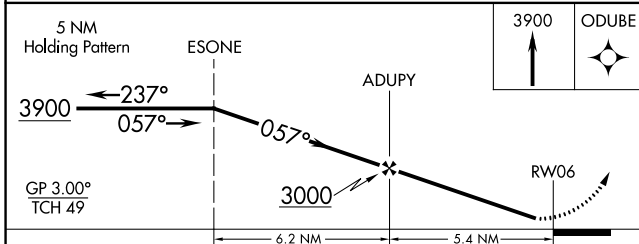
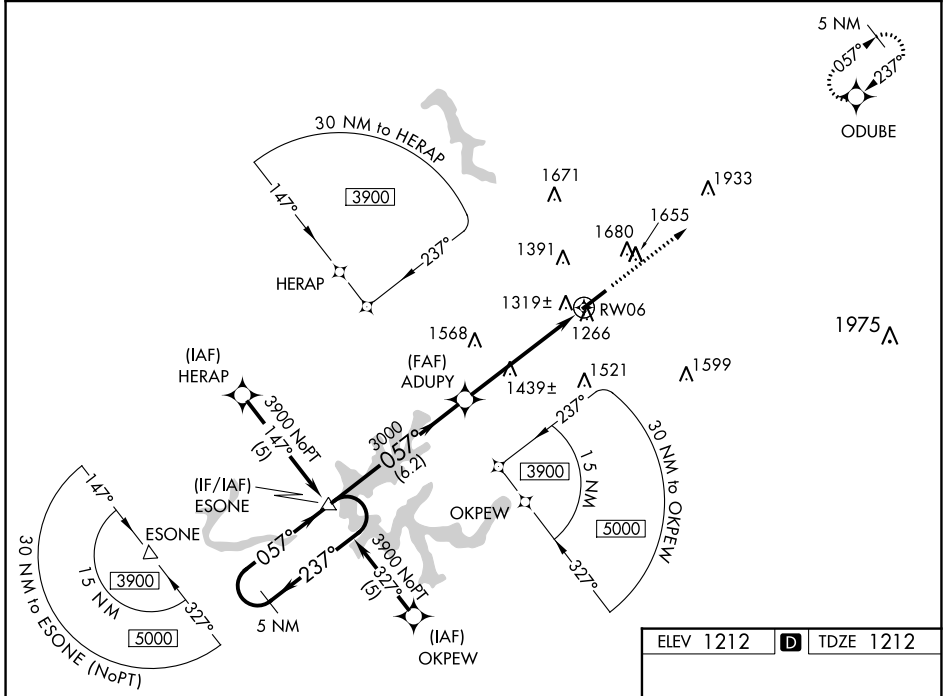
LONDON/CORBIN/MAGEE (LOZ)

RNP APCH

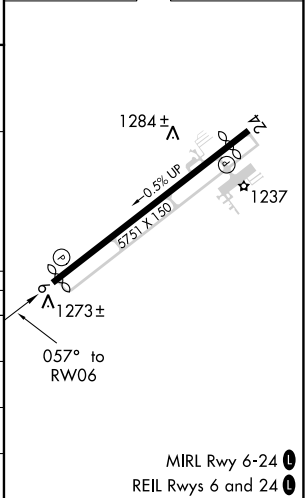
▼ Visibility reduction by helicopters NA. When local altimeter setting not received, use Somerset altimeter setting: increase LPV DA to 1566 feet and visibility all Cats ½ SM; increase LNAV/VNAV DA to 1702 feet and visibility all Cats ½ SM; increase all MDAs 100 feet and LNAV Cat C visibility ¼ SM, Cat D visibility ½ SM, and Circling Cat C/D visibility ¼ SM. For uncompensated Baro-VNAV systems, LNAV/VNAV NA below -17° C or above 46° C. Baro-VNAV and VDP NA when using Somerset altimeter setting.

MISSED APPROACH:
Climb to 3900 direct
ODUBE and hold.

ASOS 119.075	INDIANAPOLIS CENTER 124.625 371.925	UNICOM 123.0 (CTAF) 0
------------------------	---	---------------------------------



ELEV 1212	D	TDZE 1212
-----------	----------	-----------



CATEGORY	A	B	C	D
LPV DA		1466-1	254 (300-1)	
LNAV/VNAV DA		1602-1¼	390 (400-1¼)	
LNAV MDA	1720-1	508 (600-1)	1720-1½	508 (600-1½)
CIRCLING	1780-1 568 (600-1)	2040-1¼ 828 (900-1¼)	2040-2½ 828 (900-2½)	2040-2¾ 828 (900-2¾)

MIRL Rwy 6-24 **0**
REIL Rws 6 and 24 **0**

SE-1, 22 FEB 2024 to 21 MAR 2024

SE-1, 22 FEB 2024 to 21 MAR 2024

VOR/DME LOZ 116.55 Chan 112 (Y)	APP CRS 025°	Rwy ldg 5000 TDZE 1212 Apt Elev 1212
---	------------------------	---

VOR RWY 6

LONDON/CORBIN/MAGEE (LOZ)

⚠ When local altimeter setting not received, use Somerset altimeter setting: increase all MDAs 100 feet and S-6 Cat C/D and Circling Cat C/D visibility ¼ SM. Night landing: Rwy 6 NA.

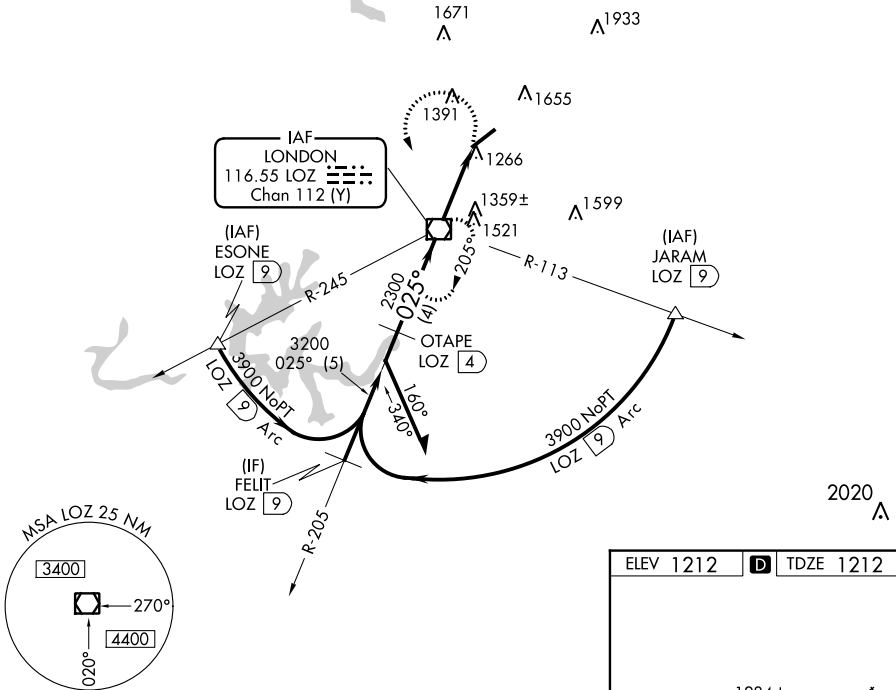
MISSED APPROACH: Climbing left turn to 4000 direct LOZ VOR/DME and hold, continue climb-in-hold to 4000.

ASOS
119.075

INDIANAPOLIS CENTER
124.625 371.925

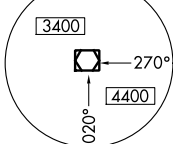
UNICOM
123.0 (CTAF) **0**

DME REQUIRED

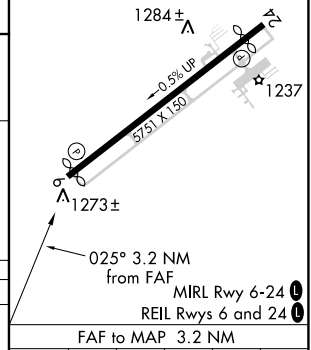
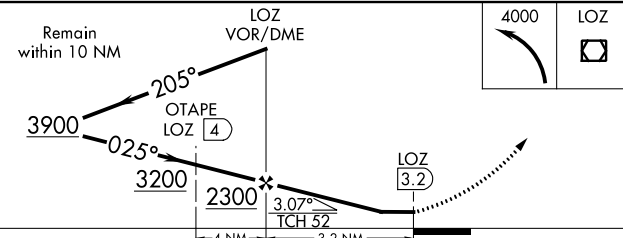


SE-1, 22 FEB 2024 to 21 MAR 2024

SE-1, 22 FEB 2024 to 21 MAR 2024



ELEV 1212	D TDZE 1212
-----------	--------------------



CATEGORY	A	B	C	D	Knots	60	90	120	150	180
S-6	1620-1	408 (500-1)	1620-1¼	408 (500-1¼)	Min:Seq	3:12	2:08	1:36	1:17	1:04
CIRCLING	1780-1 568 (600-1)	2040-1¼ 828 (900-1¼)	2040-2½ 828 (900-2½)	2040-2¾ 828 (900-2¾)						

VOR RWY 6