

NDB-B

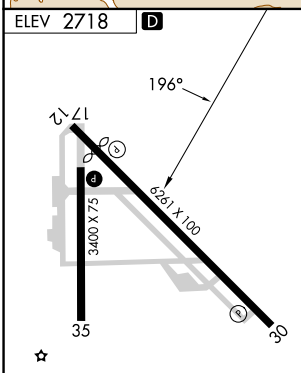
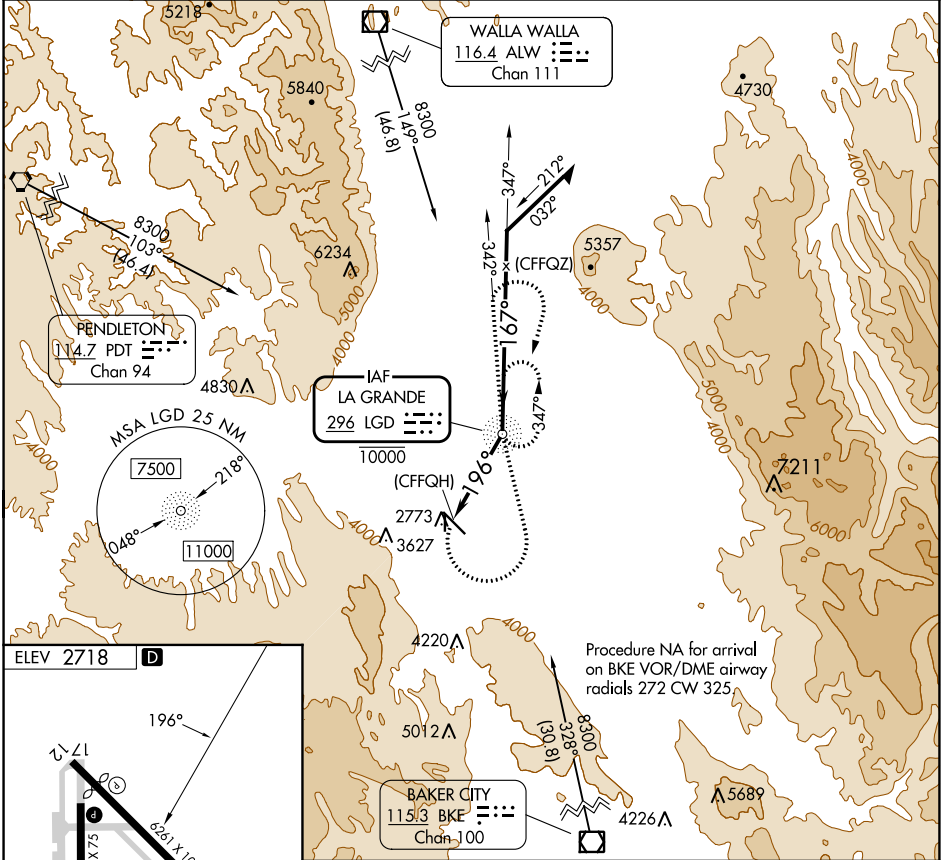
LA GRANDE/UNION COUNTY (LGD)

NDB LGD 296	APP CRS 196°	Rwy Idg TDZE Apt Elev N/A N/A 2718
-----------------------	------------------------	------------------------------------------------------------------------

NA Circling NA for Cat C southwest of Rwy 12-30.
-17°C

MISSED APPROACH: Climbing left turn to 6500 direct LGD NDB and on bearing 342° from LGD NDB, then climbing right turn to 7700 direct LGD NDB and hold.

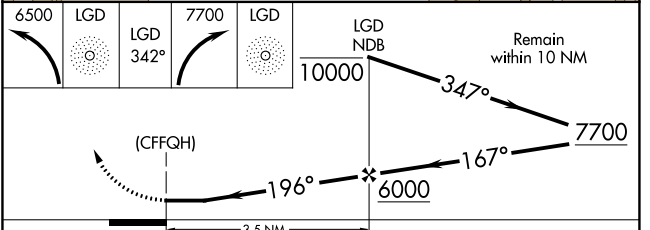
AWOS-3PT 135.075	SEATTLE CENTER 132.6 269.35	UNICOM 122.8 (CTAF)
----------------------------	---------------------------------------	-------------------------------



REIL Rwy 30
 REIL Rwys 17 and 35
 MIRL Rwys 12-30 and 17-35

FAF to MAP 3.5 NM

Knots	60	90	120	150	180
Min:Sec	3:30	2:20	1:45	1:24	1:10



CATEGORY	A	B	C	D
CIRCLING	4600-1¼ 1882 (1900-1¼)	4600-1½ 1882 (1900-1½)	4600-3 1882 (1900-3)	NA

NW-1, 22 FEB 2024 to 21 MAR 2024

NW-1, 22 FEB 2024 to 21 MAR 2024

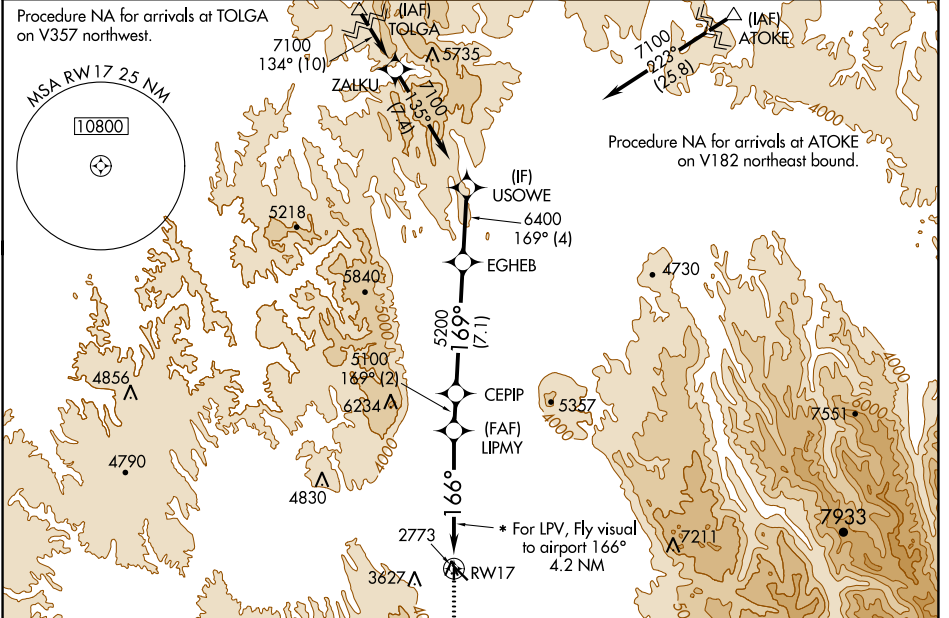
WAAS CH 66000 W17A	APP CRS 166°	Rwy Idg 3400 TDZE 2714 Apt Elev 2718
----------------------------------------	------------------------	-----------------------------------------------------------------

RNAV (GPS) RWY 17

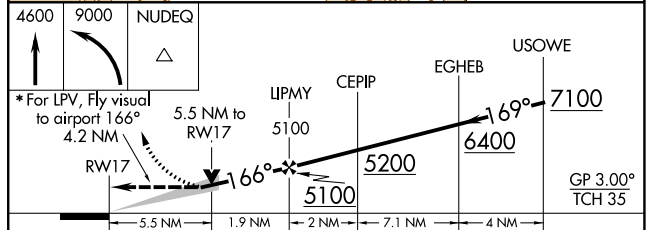
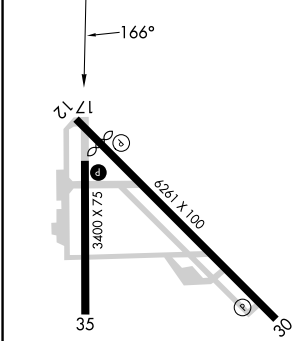
LA GRANDE/UNION COUNTY (L.G.D)

RNP APCH - GPS.		MISSED APPROACH: Climb to 4600 then climbing left turn to 9000 direct NUDEQ and hold, continue climb-in-hold to 9000.
<p>▼ Circling NA for Cats C and D southwest of Rwy 12-30.</p> <p>▲ NA Fly visual to airport authorized during day only.</p> <p>☁ -17°C * Day visibility minimums 3 SM.</p>		

AWOS-3PT 135.075	SEATTLE CENTER 132.6 269.35	UNICOM 122.8 (CTAF) 0
----------------------------	---------------------------------------	---------------------------------



ELEV 2718	D	TDZE 2714
-----------	----------	-----------



CATEGORY	A	B	C	D
LPV DA*	4112-5 1398 (1400-5)			
LNAV MDA	4540-1¼ 1826 (1900-1¼)	4540-1½ 1826 (1900-1½)	4540-1½ 1822 (1900-1½)	4540-3 1826 (1900-3)
C CIRCLING	4540-1¼ 1822 (1900-1¼)	4540-1½ 1822 (1900-1½)	4540-3 1822 (1900-3)	

REIL Rwy 30
REIL Rwy 17 and 35
MIRL Rwy 12-30 and 17-35

NW-1, 22 FEB 2024 to 21 MAR 2024

NW-1, 22 FEB 2024 to 21 MAR 2024