

(SXC8.SXC) 23334

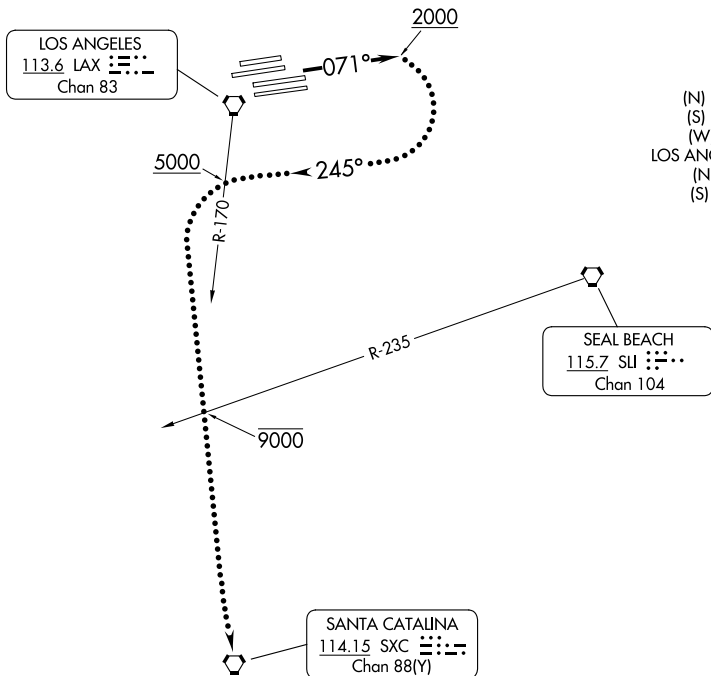
CATALINA EIGHT DEPARTURE

AL-237 (FAA)

LOS ANGELES INTL (LAX)
LOS ANGELES, CALIFORNIA

**TOP ALTITUDE:
ASSIGNED BY ATC**

SOCAL DEP CON
 124.3 363.2 (045°-224°)
 125.2 263.025 (225°-044°)
 D-ATIS DEP
 135.65
 CLNC DEL
 120.35 327.0
 CPDLC
 GND CON
 (N) 121.65 327.0
 (S) 121.75 327.0
 (W) 121.4 327.0
 LOS ANGELES TOWER
 (N) 133.9 239.3
 (S) 120.95 379.1



TAKEOFF MINIMUMS

Rwys 24L/R, 25L/R: NA-Operational.
 Rwys 6L/R, 7L/R: Standard.

NOTE: RADAR required.

NOTE: This is a RADAR vector departure to
 SXC VORTAC. Route depicted is a lost
 communication procedure only.

NOTE: Chart not to scale.



DEPARTURE ROUTE DESCRIPTION

TAKEOFF RUNWAYS 6L/R, 7L/R: Climb heading 071° for vectors to SXC VORTAC. Then on (assigned route). All aircraft expect further clearance to filed altitude 5 minutes after departure.

LOST COMMUNICATIONS:

TAKEOFF RUNWAYS 6L/R, 7L/R: If not in contact with Departure Control after reaching 2000', turn right heading 245°. Cross LAX R-170 at or above 5000', then turn left and proceed direct SXC VORTAC. Cross SLI R-235 at or below 9000'.

CATALINA EIGHT DEPARTURE

(SXC8.SXC) 17AUG17

LOS ANGELES, CALIFORNIA
LOS ANGELES INTL (LAX)

SW-3, 22 FEB 2024 to 21 MAR 2024

SW-3, 22 FEB 2024 to 21 MAR 2024

CHATTY FIVE DEPARTURE
(CHATY5.CHATY) 27APR17

**TOP ALTITUDE:
ASSIGNED BY ATC**

SAN MARCUS
114.9 RZS
Chan 96

GAVIOTA
113.8 GVO
Chan 85

FILLMORE
112.5 FIM
Chan 72

VENTURA
116.55 VTU
Chan 112(Y)

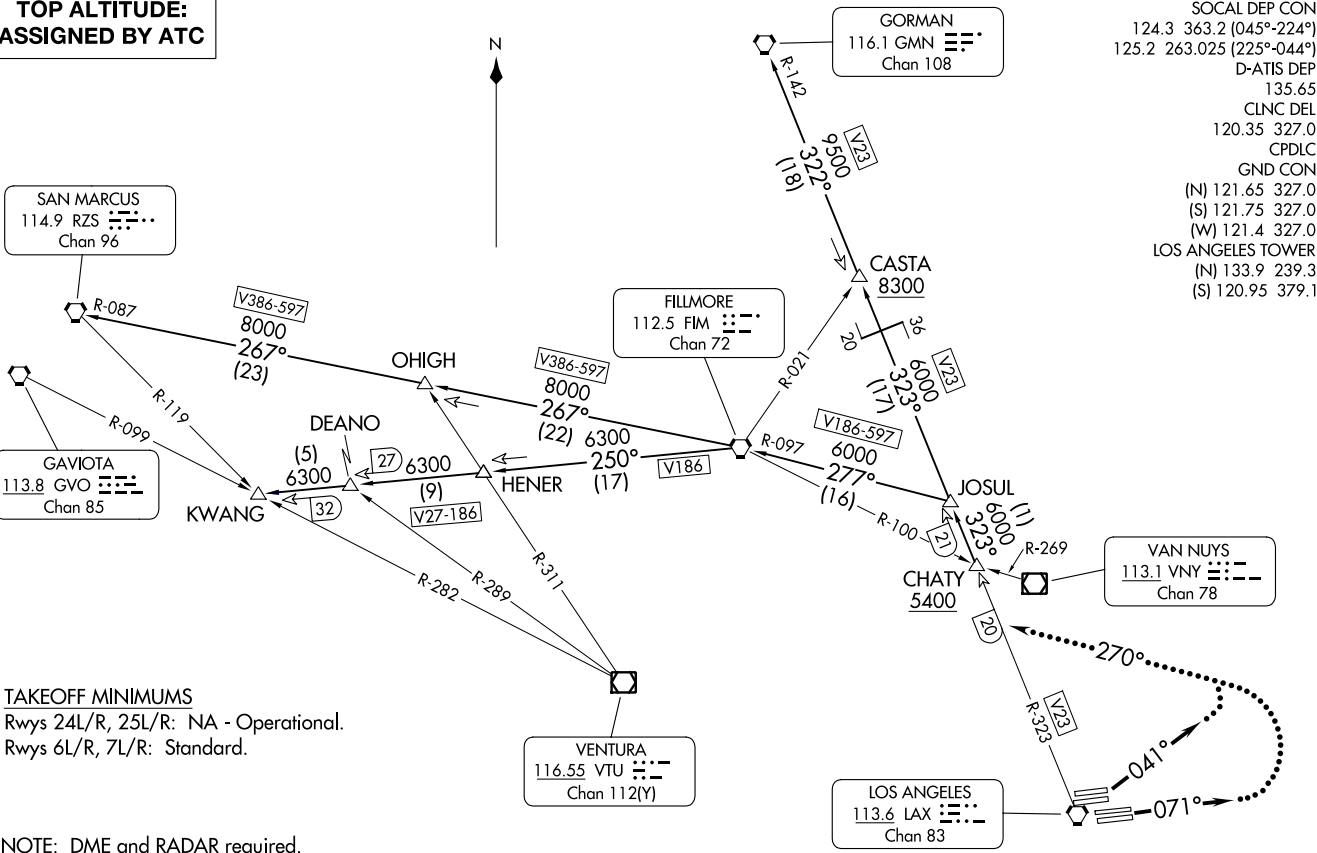
GORMAN
116.1 GMN
Chan 108

SOCAL DEP CON
124.3 363.2 (045°-224°)
125.2 263.025 (225°-044°)
D-ATIS DEP
135.65
CLNC DEL
120.35 327.0
CPDLC
GND CON
(N) 121.65 327.0
(S) 121.75 327.0
(W) 121.4 327.0
LOS ANGELES TOWER
(N) 133.9 239.3
(S) 120.95 379.1

TAKEOFF MINIMUMS
Rwys 24L/R, 25L/R: NA - Operational.
Rwys 6L/R, 7L/R: Standard.

NOTE: DME and RADAR required.
NOTE: Procedure for non turbojet aircraft only.

NOTE: Chart not to scale.



(CONTINUED ON FOLLOWING PAGE)

(CHATY5.CHATY) 23334
CHATTY FIVE DEPARTURE

AL-237 (FAA)

LOS ANGELES INTL (LAX)
LOS ANGELES CALIFORNIA

LOS ANGELES CALIFORNIA
LOS ANGELES INTL (LAX)



DEPARTURE ROUTE DESCRIPTION

TAKEOFF RUNWAYS 6L/R: Climb heading 041° for vector to V23, thence. . . .

TAKEOFF RUNWAYS 7L/R: Climb heading 071° for vector to V23, thence. . . .

. . . then on (transition) or (assigned route). Expect filed altitude 5 minutes after departure.

LOST COMMUNICATIONS

RUNWAYS 6L/R, 7L/R: If not in contact with departure control within 3 minutes after departure, turn left heading 270°, intercept V23 to CHATY INT and resume the CHATY FIVE DEPARTURE. Continue on course.

GORMAN TRANSITION (CHATY5.GMN): From over CHATY INT on LAX R-323 and GMN R-142 to GMN VORTAC.

HENER TRANSITION (CHATY5.HENER): From over CHATY INT on LAX R-323 to JOSUL, then on FIM R-097 to FIM VORTAC, then on FIM R-250 to HENER INT.

KWANG TRANSITION (CHATY5.KWANG): From over CHATY INT on LAX R-323 to JOSUL, then on FIM R-097 to FIM VORTAC, then on FIM R-250 to KWANG INT.

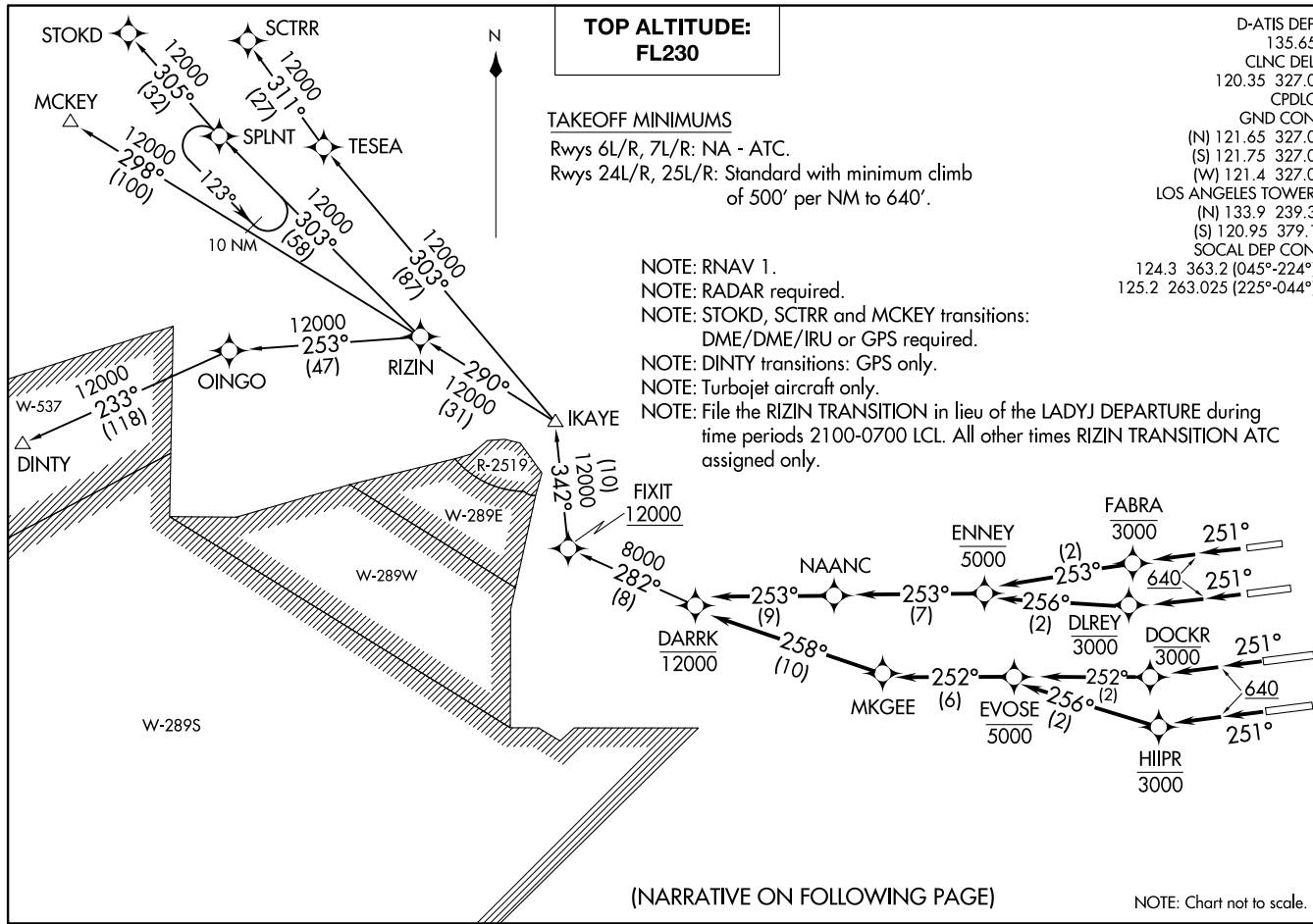
SAN MARCUS TRANSITION (CHATY5.RZS): From over CHATY INT on LAX R-323 to JOSUL, then on FIM R-097 to FIM VORTAC, then on FIM R-267 to OHIGH INT, then on RZS R-087 to RZS VORTAC.

SW-3, 22 FEB 2024 to 21 MAR 2024

SW-3, 22 FEB 2024 to 21 MAR 2024

DARRK THREE DEPARTURE (RNAV)
(DARRK3.DARRK) 100CTT9

LOS ANGELES, CALIFORNIA
LOS ANGELES INTL (LAX)





DEPARTURE ROUTE DESCRIPTION

TAKEOFF RUNWAY 24L: Climb heading 251° to 640, then climb direct to cross DLREY at or below 3000, then on track 256° to cross ENNEY at or below 5000, then on track 253° to NAANC, then on track 253° to cross DARRK at or below 12000, thence. . . .

TAKEOFF RUNWAY 24R: Climb heading 251° to 640, then climb direct to cross FABRA at or below 3000, then on track 253° to cross ENNEY at or below 5000, then on track 253° to NAANC, then on track 253° to cross DARRK at or below 12000, thence. . . .

TAKEOFF RUNWAY 25L: Climb heading 251° to 640, then climb direct to cross HIIPR at or below 3000, then on track 256° to cross EVOSE at or below 5000, then on track 252° to MKGEE, then on track 258° to cross DARRK at or below 12000, thence. . . .

TAKEOFF RUNWAY 25R: Climb heading 251° to 640, then climb direct to cross DOCKR at or below 3000, then on track 252° to cross EVOSE at or below 5000, then on track 252° to MKGEE, then on track 258° to cross DARRK at or below 12000, thence. . . .

. . . .on (transition) maintain FL230. Expect filed altitude 5 minutes after departure.

DINTY TRANSITION (DARRK3.DINTY)

MCKEY TRANSITION (DARRK3.MCKEY)

RIZIN TRANSITION (DARRK3.RIZIN)

SCTRR TRANSITION (DARRK3.SCTRR)

STOKD TRANSITION (DARRK3.STOKD)

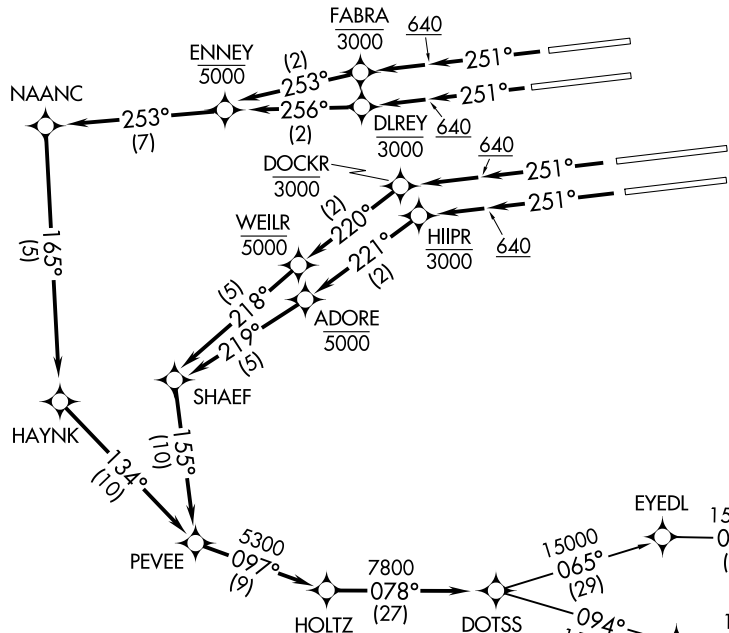
SW-3, 22 FEB 2024 to 21 MAR 2024

SW-3, 22 FEB 2024 to 21 MAR 2024

(DOTSS2.DOTSS) 17AUG17

DOTSS TWO DEPARTURE (RNAV)

LOS ANGELES, CALIFORNIA
LOS ANGELES INTL (LAX)



TOP ALTITUDE:
17000



D-ATIS DEP 135.65
CLNC DEL 120.35 327.0
CPDLC GND CON (N) 121.65 327.0
(S) 121.75 327.0
(W) 121.4 327.0
LOS ANGELES TOWER (N) 133.9 239.3
(S) 120.95 379.1
SOCAL DEP CON 124.3 363.2 (045°-224°)
125.2 263.025 (225°-044°)

TTRUE ✦
WURMO ✦

LVELL ✦

TAKEOFF MINIMUMS
Rwys 6L/R, 7L/R: NA-ATC.
Rwys 24L/R, 25L/R: Standard with minimum climb of 500' per NM to 640.

NOTE: DME/DME/IRU or GPS required.
NOTE: RADAR required.
NOTE: RNAV 1.
NOTE: Turbojet aircraft only.
NOTE: Turn at HIIPR and DOCKR are required for ATC separation.

(NARRATIVE ON FOLLOWING PAGE)

NOTE: Chart not to scale.

(DOTSS2.DOTSS) 17ZZ29

DOTSS TWO DEPARTURE (RNAV)

AL-237 (FAA)

LOS ANGELES INTL (LAX)
LOS ANGELES, CALIFORNIA



DEPARTURE ROUTE DESCRIPTION

TAKEOFF RUNWAY 24L: Climb heading 251° to 640, then climb direct to cross DLREY at or below 3000, then on track 256° to cross ENNEY at or below 5000, then on depicted route to cross DOTSS at or above 15000, thence. . . .

TAKEOFF RUNWAY 24R: Climb heading 251° to 640, then climb direct to cross FABRA at or below 3000, then on track 253° to cross ENNEY at or below 5000, then on depicted route to cross DOTSS at or above 15000, thence. . . .

TAKEOFF RUNWAY 25L: Climb heading 251° to 640, then climb direct to cross HIIIPR at or below 3000, then on track 221° to cross ADORE at or below 5000, then on depicted route to cross DOTSS at or above 15000, thence. . . .

TAKEOFF RUNWAY 25R: Climb heading 251° to 640, then climb direct to cross DOCKR at or below 3000, then on track 220° to cross WEILR at or below 5000, then on depicted route to cross DOTSS at or above 15000, thence. . . .

. . . .on (transition). Maintain 17000. Expect filed altitude five minutes after departure.

CLEEE TRANSITION (DOTSS2.CLEEE)

CNERY TRANSITION (DOTSS2.CNERY)

SW-3, 22 FEB 2024 to 21 MAR 2024

SW-3, 22 FEB 2024 to 21 MAR 2024

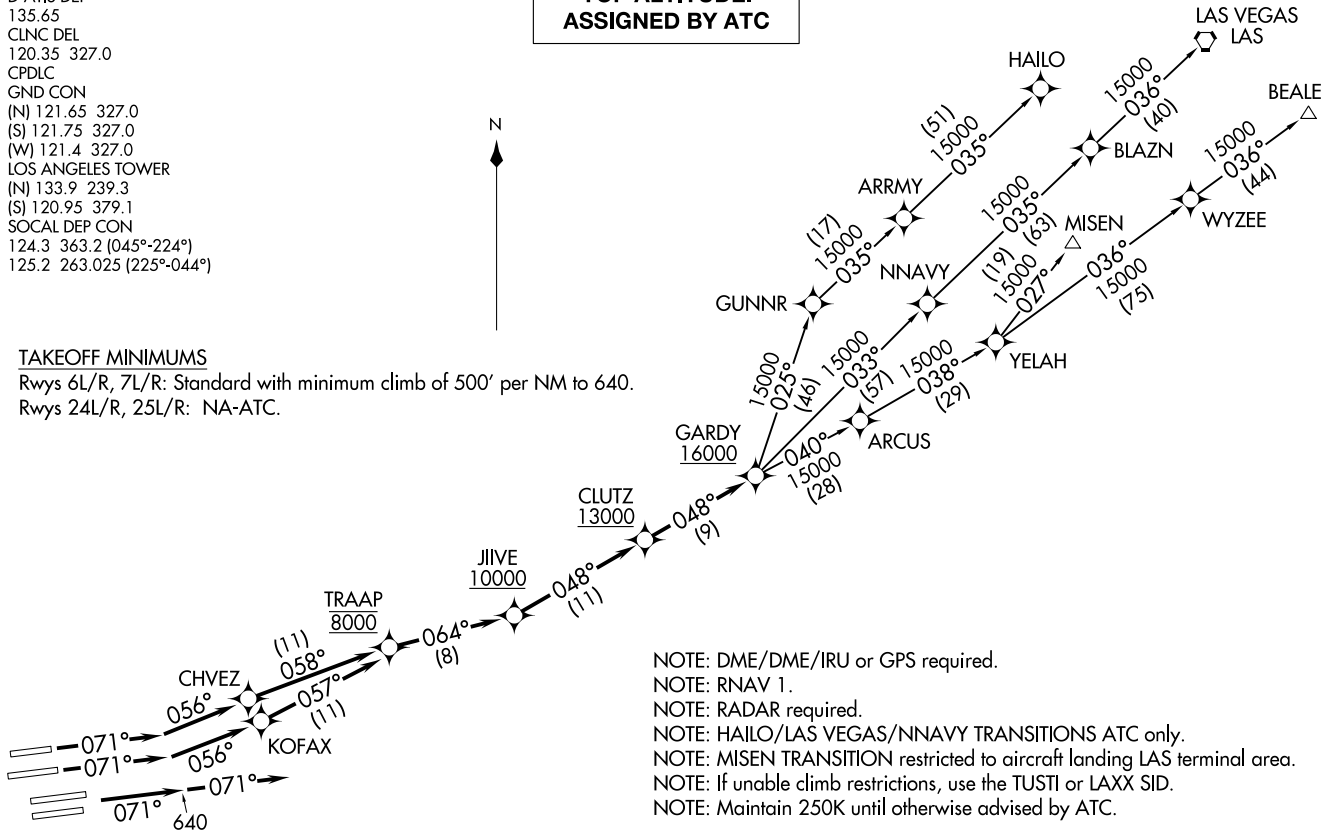
**TOP ALTITUDE:
ASSIGNED BY ATC**

D-ATIS DEP
135.65
CLNC DEL
120.35 327.0
CPDLC
GND CON
(N) 121.65 327.0
(S) 121.75 327.0
(W) 121.4 327.0
LOS ANGELES TOWER
(N) 133.9 239.3
(S) 120.95 379.1
SOCAL DEP CON
124.3 363.2 (045°-224°)
125.2 263.025 (225°-044°)



TAKEOFF MINIMUMS

Rwys 6L/R, 7L/R: Standard with minimum climb of 500' per NM to 640.
Rwys 24L/R, 25L/R: NA-ATC.



- NOTE: DME/DME/IRU or GPS required.
- NOTE: RNAV 1.
- NOTE: RADAR required.
- NOTE: HAILO/LAS VEGAS/NNAVY TRANSITIONS ATC only.
- NOTE: MISEN TRANSITION restricted to aircraft landing LAS terminal area.
- NOTE: If unable climb restrictions, use the TUSTI or LAXX SID.
- NOTE: Maintain 250K until otherwise advised by ATC.

(NARRATIVE ON FOLLOWING PAGE)

NOTE: Chart not to scale.

GARDY FOUR DEPARTURE (RNAV)
 (GARDY4, GARDY) 10SEP20

LOS ANGELES, CALIFORNIA
 LOS ANGELES INTL (LAX)

(GARDY4, GARDY) 20254
 GARDY FOUR DEPARTURE (RNAV)

AL-237 (FAA)

LOS ANGELES INTL (LAX)
 LOS ANGELES, CALIFORNIA



DEPARTURE ROUTE DESCRIPTION

TAKEOFF RUNWAY 6L: Climb on heading 071° to intercept course 056° to CHVEZ, then on track 058° to cross TRAAP at 8000, then on track 064° to cross JIIVE at or above 10000, then on track 048° to cross CLUTZ at or above 13000, then on track 048° to cross GARDY at or above 16000, thence. . . .

TAKEOFF RUNWAY 6R: Climb on heading 071° to intercept course 056° to KOFAX, then on track 057° to cross TRAAP at 8000, then on track 064° to cross JIIVE at or above 10000, then on track 048° to cross CLUTZ at or above 13000, then on track 048° to cross GARDY at or above 16000, thence. . . .

TAKEOFF RUNWAYS 7L/R: Climb on heading 071° to 640, then on heading 071° or as assigned by ATC, expect vectors to cross TRAAP at 8000, then on track 064° to cross JIIVE at or above 10000, then on track 048° to cross CLUTZ at or above 13000, then on track 048° to cross GARDY at or above 16000, thence. . . .

. . . .on (transition). Maintain ATC assigned altitude. Expect filed altitude five minutes after departure.

BEALE TRANSITION (GARDY4.BEALE)

HAILO TRANSITION (GARDY4.HAILO)

LAS VEGAS TRANSITION (GARDY4.LAS)

MISEN TRANSITION (GARDY4.MISEN)

NNAVY TRANSITION (GARDY4.NNAVY)

SW-3, 22 FEB 2024 to 21 MAR 2024

SW-3, 22 FEB 2024 to 21 MAR 2024

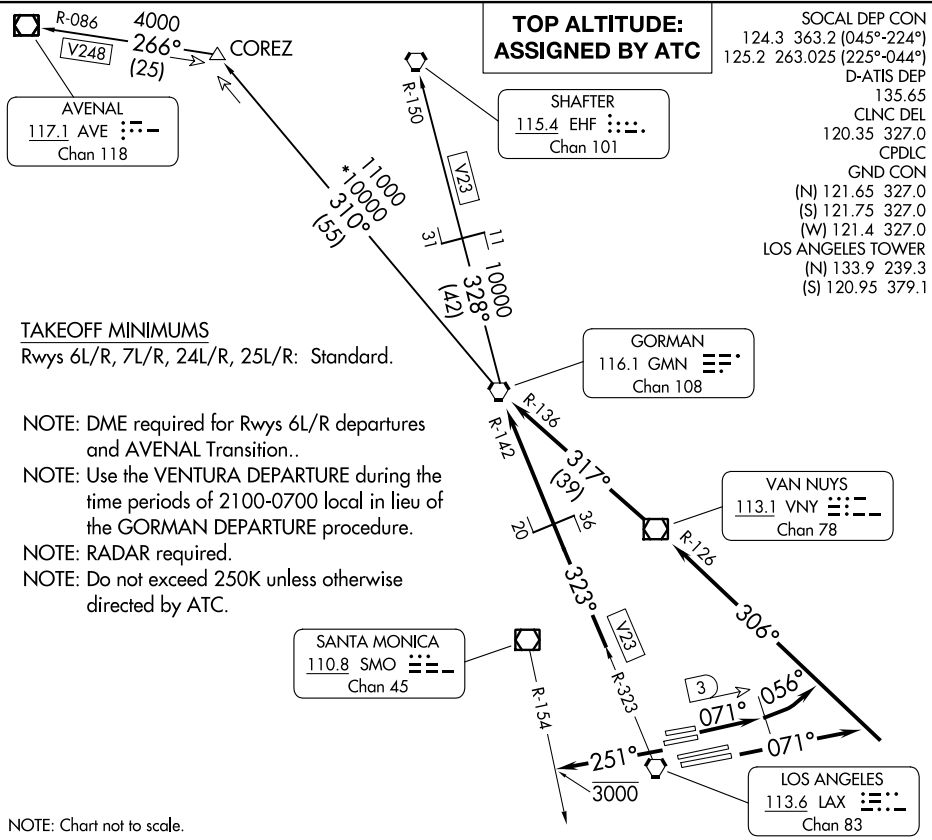
(GMN7.GMN) 23334

GORMAN SEVEN DEPARTURE

AL-237 (FAA)

LOS ANGELES INTL (LAX)

LOS ANGELES, CALIFORNIA



SW-3, 22 FEB 2024 to 21 MAR 2024

SW-3, 22 FEB 2024 to 21 MAR 2024

NOTE: Chart not to scale.

DEPARTURE ROUTE DESCRIPTION

TAKEOFF RUNWAYS 6L/R: Climb on heading 071° until LAX VORTAC 3 DME, then turn left heading 056° for vector to join VNY R-126 to VNY VOR/DME, then on VNY R-317 and GMN R-136 to GMN VORTAC, thence. . . .

TAKEOFF RUNWAYS 7L/R: Climb on heading 071° for vector to join VNY R-126 to VNY VOR/DME, then on VNY R-317 and GMN R-136 to GMN VORTAC, thence. . . .

TAKEOFF RUNWAYS 24L/R, 25L/R: Climb on heading 251° to cross SMO R-154 at or below 3000, then on RADAR vector to LAX R-323 and GMN R-142 to GMN VORTAC, thence. . . .
. . . .on (transition) or (assigned route). All aircraft expect further clearance to filed flight level 5 minutes after departure.

LOST COMMUNICATIONS: If not in contact with Departure Control within five minutes after departure, climb to FL230 or filed altitude whichever is lower. Aircraft filing FL240 or above climb to filed altitude ten minutes after departure.

AVENAL TRANSITION (GMN7.AVE): From over GMN VORTAC on GMN R-310 to COREZ then on AVE R-086 to AVE VOR/DME.

SHAFTER TRANSITION (GMN7.EHF): From over GMN VORTAC on GMN R-328 and EHF R-150 to EHF VORTAC.

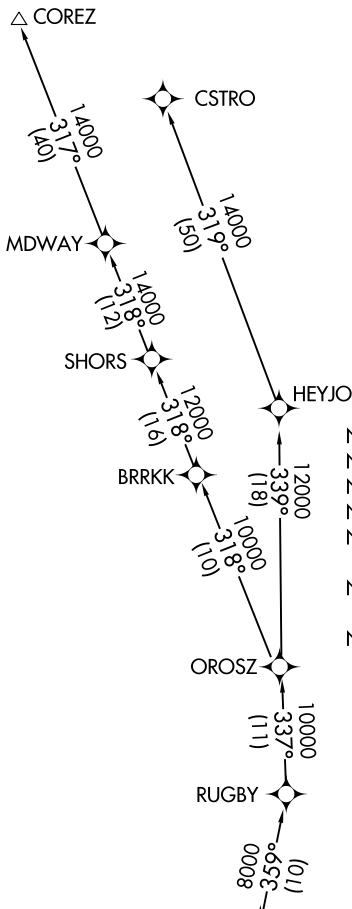
GORMAN SEVEN DEPARTURE

(GMN7.GMN) 17AUG17

LOS ANGELES, CALIFORNIA
LOS ANGELES INTL (LAX)

**TOP ALTITUDE:
8000**

D-ATIS DEP 135.65
 CLNC DEL 120.35 327.0
 CPDLC
 GND CON (N) 121.65 327.0
 (S) 121.75 327.0
 (W) 121.4 327.0
 LOS ANGELES TOWER (N) 133.9 239.3
 (S) 120.95 379.1
 SOCAL DEP CON 124.3 363.2 (045°-224°)
 125.2 263.025 (225°-044°)



NOTE: DME/DME/IRU or GPS required.
 NOTE: RADAR required.
 NOTE: RNAV 1.
 NOTE: Restricted to turbojet aircraft only.
 NOTE: Some departures may be RADAR vectored to MLIBU, LADYJ, or OROSZ.
 NOTE: Maintain at or below 250K unless otherwise directed by ATC.
 NOTE: Use the DARRK, SUMMR, or VENTURA DEPARTURE during the time periods of 2100-0700 local in lieu of the LADYJ DEPARTURE.

TAKEOFF MINIMUMS

Rwys 6L/R, 7L/R: NA-ATC.

Rwys 24L/R, 25L/R: Standard with minimum climb of 500' per NM to 640.

(NARRATIVE ON FOLLOWING PAGE)

NOTE: Chart not to scale.



DEPARTURE ROUTE DESCRIPTION

TAKEOFF RUNWAY 24L: Climb heading 251° to 640, then climb direct to cross DLREY at or below 3000, then on track 256° to cross ENNEY at or below 5000, then on track 253° to EYENO, then on track 316° to cross MLIBU at or above 7000, then on track 351° to cross LADYJ at 8000, thence. . . .

TAKEOFF RUNWAY 24R: Climb heading 251° to 640, then climb direct to cross FABRA at or below 3000, then on track 253° to cross ENNEY at or below 5000, then on track 253° to EYENO, then on track 316° to cross MLIBU at or above 7000, then on track 351° to cross LADYJ at 8000, thence. . . .

TAKEOFF RUNWAY 25L: Climb heading 251° to 640, then climb direct to cross HIIIPR at or below 3000, then on track 256° to cross EVOSE at or below 5000, then on track 252° to MKGEE, then on track 319° to cross MLIBU at or above 7000, then on track 351° to cross LADYJ at 8000, thence. . . .

TAKEOFF RUNWAY 25R: Climb heading 251° to 640, then climb direct to cross DOCKR at or below 3000, then on track 252° to cross EVOSE at or below 5000, then on track 252° to MKGEE, then on track 319° to cross MLIBU at or above 7000, then on track 351° to cross LADYJ at 8000, thence. . . .

. . . .on (transition) maintain 8000. Expect filed altitude 5 minutes after departure.

COREZ TRANSITION (LADYJ4.COREZ)

CSTRO TRANSITION (LADYJ4.CSTRO)

SW-3, 22 FEB 2024 to 21 MAR 2024

SW-3, 22 FEB 2024 to 21 MAR 2024

LAXX ONE DEPARTURE
(LAXX1 .SU) 17AUG17

LOS ANGELES, CALIFORNIA
LOS ANGELES INTL (LAX)

**TOP ALTITUDE:
ASSIGNED BY ATC**

SANTA MONICA
110.8 SMO Chan 45

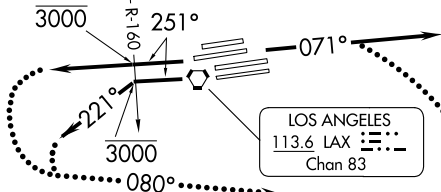
TAKEOFF MINIMUMS

Rwy 6L/R, 7L/R, 24L/R, 25L/R: Standard.

NOTE: This departure is for turbojet aircraft only.

NOTE: RADAR and DME required.

SOCAL DEP CON
124.3 363.2 (045°-224°)
125.2 263.025 (225°-044°)
D-ATIS DEP
135.65
CLNC DEL
120.35 327.0
CPDLC
GND CON
(N) 121.65 327.0
(S) 121.75 327.0
(W) 121.4 327.0
LOS ANGELES TOWER
(N) 133.9 239.3
(S) 120.95 379.1



South complex turn at SMO R-160 to 221° is required for ATC separation.

SEAL BEACH
115.7 SU Chan 104
4000

SANTA CATALINA
114.15 SXC Chan 88(Y)

GOATZ
12000
213° (63)

MALIT
16000
213° (47)

ROSIN

FICKY

Expect clearance to FICKY then on assigned route.

(CONTINUED ON FOLLOWING PAGE)

OCEANSIDE
115.3 OCN Chan 100

MISSION BAY
117.8 MZB Chan 125

POMONA
110.4 POM Chan 41

TUSTI
8000

EL TORO
117.2 ELB Chan 119

DANAH

CARIF

JULIAN
114.0 JLI Chan 87

IMPERIAL
115.9 IPL Chan 106

MISSION BAY
117.8 MZB Chan 125

PILLO
8500
076° (49)

THERMAL
116.2 TRM Chan 109

V64
J78-134-169
3000
080° (11)

V64
J78-134-169
4000
120° (25)

V21
R-022
4000
202° (31)

V23
R-155-592
4000
121° (20)

V23
R-301
4000
145° (13)

V23
R-326
4000
140° (19)

V23
R-326
4000
140° (19)

V23
R-326
4000
140° (19)

V64
J78-134-169
11000
080° (48)

V64
J78-134-169
11000
083° (36)

V64
J78-134-169
11000
083° (36)

V64
J78-134-169
11000
083° (36)

V64
J78-134-169
11000
083° (36)

V64
J78-134-169
11000
083° (36)

V64
J78-134-169
11000
083° (36)

V64
J78-134-169
11000
083° (36)

HEMET
11000

V64
J78-134-169
11000
083° (36)

V64
J78-134-169
11000
083° (36)

V64
J78-134-169
11000
083° (36)

V64
J78-134-169
11000
083° (36)

V64
J78-134-169
11000
083° (36)

V64
J78-134-169
11000
083° (36)

V64
J78-134-169
11000
083° (36)

V64
J78-134-169
11000
083° (36)

NOTE: Chart not to scale.

LAXX ONE DEPARTURE
(LAXX1 .SU) 23334

AL-237 (FAA)

LOS ANGELES INTL (LAX)
LOS ANGELES, CALIFORNIA



DEPARTURE ROUTE DESCRIPTION

TAKEOFF RUNWAYS 6L/R, 7L/R: Climb heading 071° for vectors to SLI VORTAC, thence. . . .

TAKEOFF RUNWAYS 24L/R: Climb on heading 251° to cross SMO R-160 at or below 3000, then on RADAR vectors to assigned route/fix/transition, thence. . . .

TAKEOFF RUNWAYS 25L/R: Climb on heading 251°, at the SMO R-160 turn left heading 221°, cross SMO R-160 at or below 3000, expect RADAR vectors to assigned route/fix/transition thence. . . .

. . . .all aircraft expect further clearance to filed flight level five minutes after departure.

IMPERIAL TRANSITION (LAXX1.IPL): From over SLI VORTAC on SLI R-120 to DANAH, then on OCN R-301 to OCN VORTAC, then on OCN R-105 to PILLO, then on MZB R-076 and IPL R-258 to IPL VORTAC.

MISSION BAY TRANSITION (LAXX1.MZB): From over SLI VORTAC on SLI R-120 to DANAH, then on OCN R-301 to OCN VORTAC, then on OCN R-145 to CARIF, then on MZB R-326 to MZB VORTAC.

OCEANSIDE TRANSITION (LAXX1.OCN): From over SLI VORTAC on SLI R-120 to DANAH, then on OCN R-301 to OCN VORTAC.

ROSIN TRANSITION (LAXX1.ROSIN): From over SLI VORTAC on SLI R-202 and SXC R-022 to SXC VORTAC, then on SXC R-213 to ROSIN.

THERMAL TRANSITION (LAXX1.TRM): From over SLI VORTAC on SLI R-080 to TUSTI, then on SLI R-080 and TRM R-263 to HEMET, then on TRM R-263 to TRM VORTAC.

LOST COMMUNICATIONS

RUNWAYS 6L/R, 7L/R: If not in contact with Departure Control within five minutes after departure, climb to FL230 or filed altitude whichever is lower, turn right direct SLI VORTAC and proceed on assigned route. Aircraft filed FL240 or above, maintain FL230 for five minutes then continue climb to filed altitude.

RUNWAYS 24L/R, 25L/R: If not in contact with Departure Control within five minutes after departure, turn left heading 080°, climb to FL230 or filed altitude whichever is lower, and when able proceed direct filed or assigned route. Aircraft filed FL240 or above, maintain FL230 for five minutes then continue climb to filed altitude.

SW-3, 22 FEB 2024 to 21 MAR 2024

SW-3, 22 FEB 2024 to 21 MAR 2024

MOOOS TWO DEPARTURE (RNAV)
(MOOOS2,MOOOS) 17AUG17

LOS ANGELES, CALIFORNIA
LOS ANGELES INTL (LAX)

D-ATIS DEP
135.65
CLNC DEL
120.35 327.0
CPDLC
GND CON
(N) 121.65 327.0
(S) 121.75 327.0
(W) 121.4 327.0
LOS ANGELES TOWER
(N) 133.9 239.3
(S) 120.95 379.1
SOCAL DEP CON
124.3 363.2 (045°-224°)
125.2 263.025 (225°-044°)

**TOP ALTITUDE:
9000**



IKAYE \triangle

5400
282°
(14)

MOOOS
8000
4900

282°
(9)

DTAIL
3100

TAKEOFF MINIMUMS

Rwys 6L/R, 7L/R: NA-ATC.

Rwys 24L/R, 25L/R: Standard with minimum climb
of 500' per NM to 640.

NOTE: RADAR required.

NOTE: RNAV 1.

NOTE: Turboprop aircraft only.

NOTE: DME/DME/IRU or GPS required.



DEPARTURE ROUTE DESCRIPTION

TAKEOFF RUNWAYS 24L/R, 25L/R: Climb heading 251° to 640, then on heading 251° or as assigned by ATC, expect vectors to cross DTAIL at or above 3100, then on track 282° to cross MOOOS at or above 4900 and at or below 8000, thence. . . .

. . . .on (transition). Maintain 9000. Expect filed altitude five minutes after departure.

LOST COMMUNICATIONS: If not in contact with Departure Control within five minutes after departure, turn right and proceed direct MOOOS WP, climb to 9000' or filed altitude whichever is lower, and when able proceed direct filed or assigned route/fix/transition. Aircraft filing 10000 or above, climb to filed altitude ten minutes after departure.

IKAYE TRANSITION (MOOOS2.IKAYE)

640

251°

640

251°

NOTE: Chart not to scale.

(MOOOS2,MOOOS) 17229
MOOOS TWO DEPARTURE (RNAV)

AL-237 (FAA)

LOS ANGELES INTL (LAX)
LOS ANGELES, CALIFORNIA

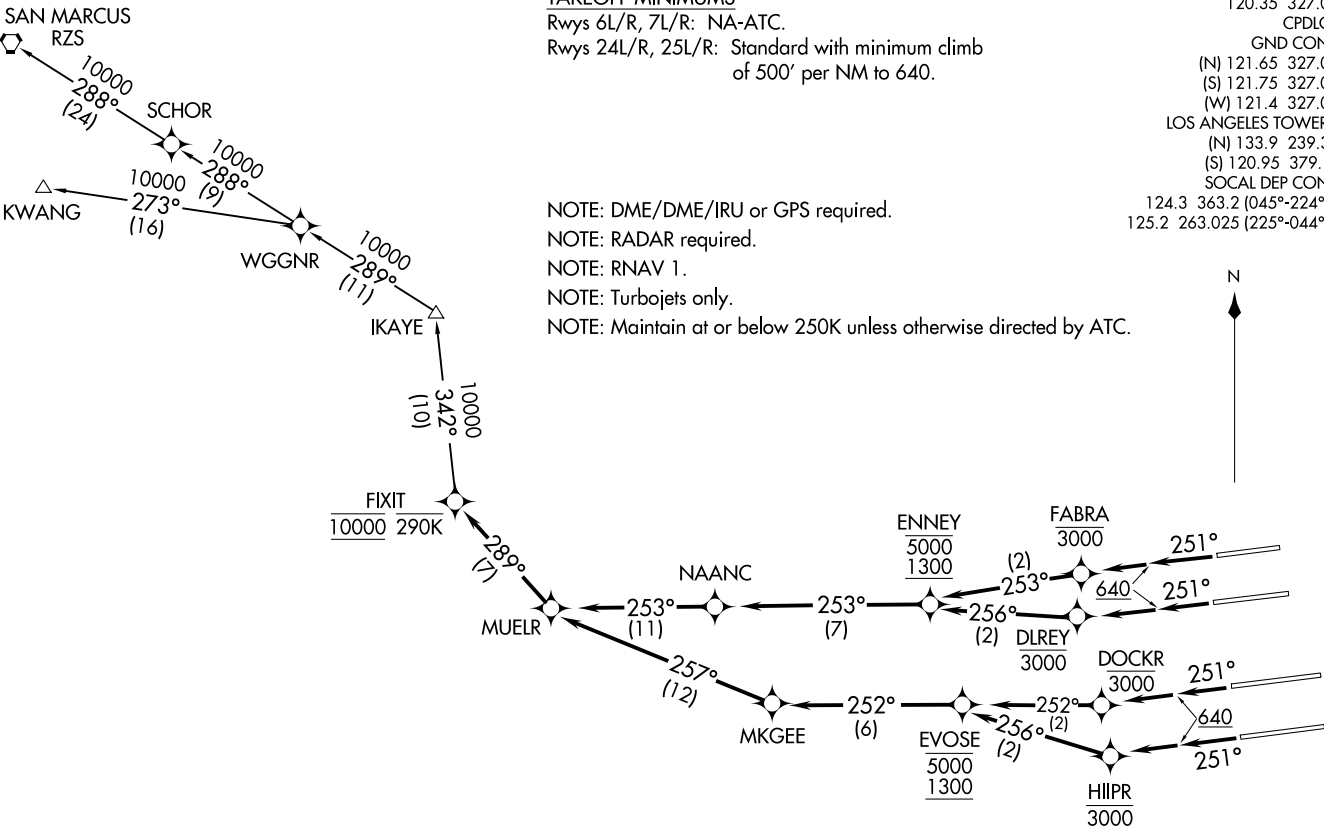
MUCLR FOUR DEPARTURE (RNAV)
(MUELR4.FIXT) 17AUG17

(MUELR4.FIXT) 17229
MUCLR FOUR DEPARTURE (RNAV)

AL-237 (FAA)

LOS ANGELES INTL (LAX)
LOS ANGELES, CALIFORNIA

**TOP ALTITUDE:
10000**



TAKEOFF MINIMUMS

Rwys 6L/R, 7L/R: NA-ATC.

Rwys 24L/R, 25L/R: Standard with minimum climb of 500' per NM to 640.

NOTE: DME/DME/IRU or GPS required.

NOTE: RADAR required.

NOTE: RNAV 1.

NOTE: Turbojets only.

NOTE: Maintain at or below 250K unless otherwise directed by ATC.

D-ATIS DEP	135.65
CLNC DEL	120.35 327.0
CPDLC	GND CON
(N)	121.65 327.0
(S)	121.75 327.0
(W)	121.4 327.0
LOS ANGELES TOWER	(N) 133.9 239.3
(S)	120.95 379.1
SOCAL DEP CON	124.3 363.2 (045°-224°)
	125.2 263.025 (225°-044°)

NOTE: Chart not to scale.

(NARRATIVE ON FOLLOWING PAGE)

LOS ANGELES, CALIFORNIA
LOS ANGELES INTL (LAX)



DEPARTURE ROUTE DESCRIPTION

TAKEOFF RUNWAY 24L: Climb on heading 251° to 640, then climb direct to cross DLREY at or below 3000, then on track 256° to cross ENNEY at or above 1300 and at or below 5000, then on depicted route to cross FIXIT at 10000, thence. . . .

TAKEOFF RUNWAY 24R: Climb on heading 251° to 640, then climb direct to cross FABRA at or below 3000, then on track 253° to cross ENNEY at or above 1300 and at or below 5000, then on depicted route to cross FIXIT at 10000, thence. . . .

TAKEOFF RUNWAY 25L: Climb on heading 251° to 640, then climb direct to cross HIIPR at or below 3000, then on track 256° to cross EVOSE at or above 1300 and at or below 5000, then on depicted route to cross FIXIT at 10000, thence. . . .

TAKEOFF RUNWAY 25R: Climb on heading 251° to 640, then climb direct to cross DOCKR at or below 3000, then on track 252° to cross EVOSE at or above 1300 and at or below 5000, then on depicted route to cross FIXIT at 10000, thence. . . .

. . . .on (transition). Maintain 10000. Expect filed altitude five minutes after departure.

KWANG TRANSITION (MUEL4.KWANG)

SAN MARCUS TRANSITION (MUEL4.RZS)

SW-3, 22 FEB 2024 to 21 MAR 2024

SW-3, 22 FEB 2024 to 21 MAR 2024

ORCA FIVE DEPARTURE (RNAV)
(ORCA5,ORCA) 10SEP20

LOS ANGELES CALIFORNIA
LOS ANGELES INTL (LAX)

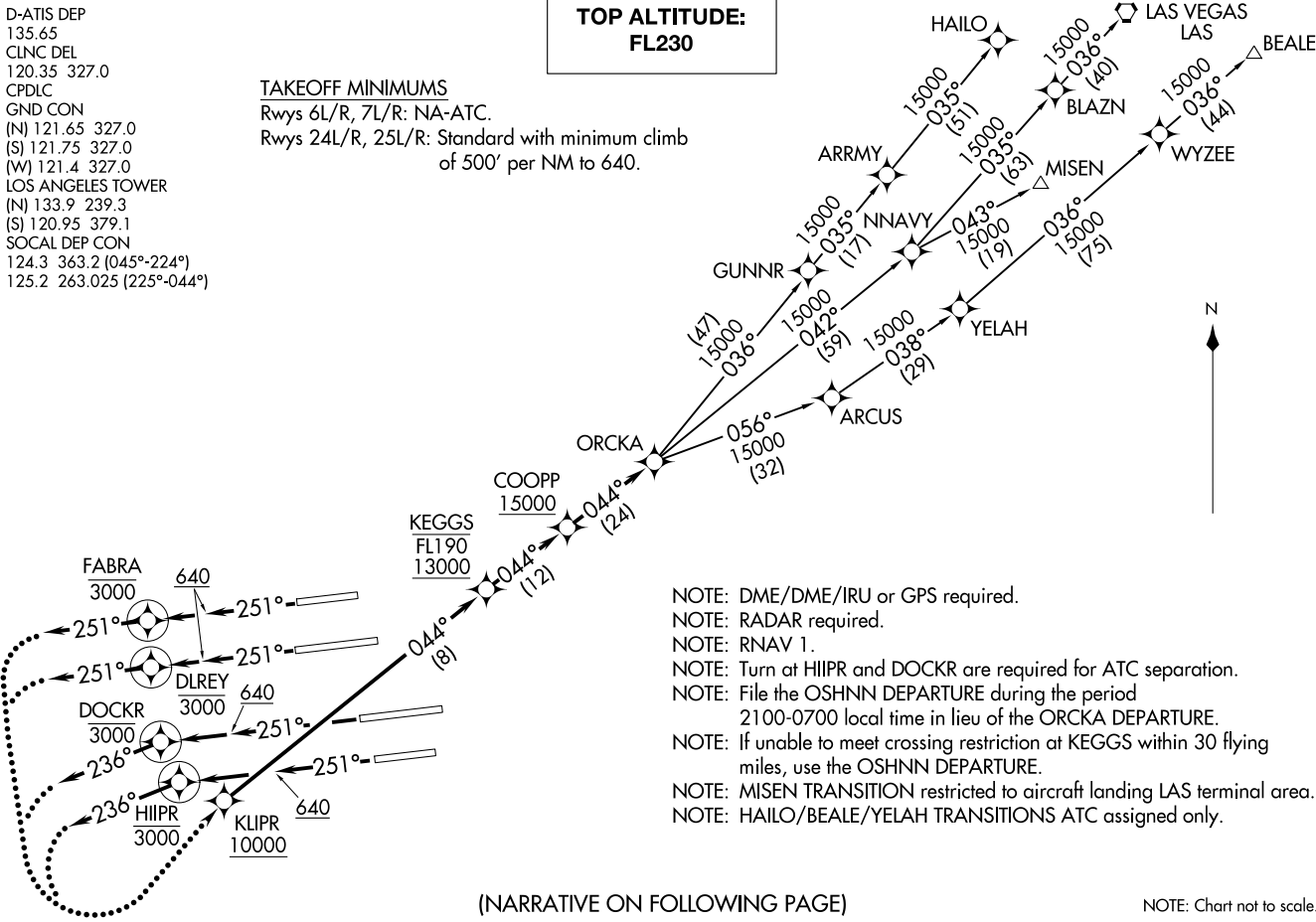
D-ATIS DEP
135.65
CLNC DEL
120.35 327.0
CPDLC
GND CON
(N) 121.65 327.0
(S) 121.75 327.0
(W) 121.4 327.0
LOS ANGELES TOWER
(N) 133.9 239.3
(S) 120.95 379.1
SOCAL DEP CON
124.3 363.2 (045°-224°)
125.2 263.025 (225°-044°)

**TOP ALTITUDE:
FL230**

TAKEOFF MINIMUMS

Rwys 6L/R, 7L/R: NA-ATC.

Rwys 24L/R, 25L/R: Standard with minimum climb
of 500' per NM to 640.



- NOTE: DME/DME/IRU or GPS required.
- NOTE: RADAR required.
- NOTE: RNAV 1.
- NOTE: Turn at HIIPR and DOCKR are required for ATC separation.
- NOTE: File the OSHNN DEPARTURE during the period 2100-0700 local time in lieu of the ORCA DEPARTURE.
- NOTE: If unable to meet crossing restriction at KEGGS within 30 flying miles, use the OSHNN DEPARTURE.
- NOTE: MISEN TRANSITION restricted to aircraft landing LAS terminal area.
- NOTE: HAILO/BEALE/YELAH TRANSITIONS ATC assigned only.

(NARRATIVE ON FOLLOWING PAGE)

NOTE: Chart not to scale.

ORCA FIVE DEPARTURE (RNAV)
20254

AL-237 (FAA)

LOS ANGELES INTL (LAX)
LOS ANGELES CALIFORNIA



DEPARTURE ROUTE DESCRIPTION

TAKEOFF RUNWAY 24L: Climb on heading 251° to 640, then climb direct to cross DLREY at or below 3000, then on heading 251° or as assigned by ATC, expect left turn to cross KLIPR at or above 10000, then on track 044° to cross KEGGS at or above 13000 and at or below FL190, then on track 044° to cross COOPP at or above 15000, then on track 044° to ORCKA, thence. . . .

TAKEOFF RUNWAY 24R: Climb on heading 251° to 640, then climb direct to cross FABRA at or below 3000, then on heading 251° or as assigned by ATC, expect left turn to cross KLIPR at or above 10000, then on track 044° to cross KEGGS at or above 13000 and at or below FL190, then on track 044° to cross COOPP at or above 15000, then on track 044° to ORCKA, thence. . . .

TAKEOFF RUNWAY 25L: Climb on heading 251° to 640, then climb direct to cross HIIPR at or below 3000, then on heading 236° or as assigned by ATC, expect left turn to cross KLIPR at or above 10000, then on track 044° to cross KEGGS at or above 13000 and at or below FL190, then on track 044° to cross COOPP at or above 15000, then on track 044° to ORCKA, thence. . . .

TAKEOFF RUNWAY 25R: Climb on heading 251° to 640, then climb direct to cross DOCKR at or below 3000, then on heading 236° or as assigned by ATC, expect left turn to cross KLIPR at or above 10000, then on track 044° to cross KEGGS at or above 13000 and at or below FL190, then on track 044° to cross COOPP at or above 15000, then on track 044° to ORCKA, thence. . . .

. . . .on (transition). Maintain FL230. Expect filed altitude five minutes after departure.

LOST COMMUNICATIONS: If not in contact with departure control within five minutes after departure, turn left and proceed direct KLIPR Waypoint, climb to FL230 or filed altitude whichever is lower, and when able proceed direct filed or assigned route/fix/transition. Aircraft filing FL240 or above, climb to filed altitude ten minutes after departure.

BEALE TRANSITION (ORCKA5.BEALE)

HAILO TRANSITION (ORCKA5.HAILO)

LAS VEGAS TRANSITION (ORCKA5.LAS)

MISEN TRANSITION (ORCKA5.MISEN)

YELAH TRANSITION (ORCKA5.YELAH)

SW-3, 22 FEB 2024 to 21 MAR 2024

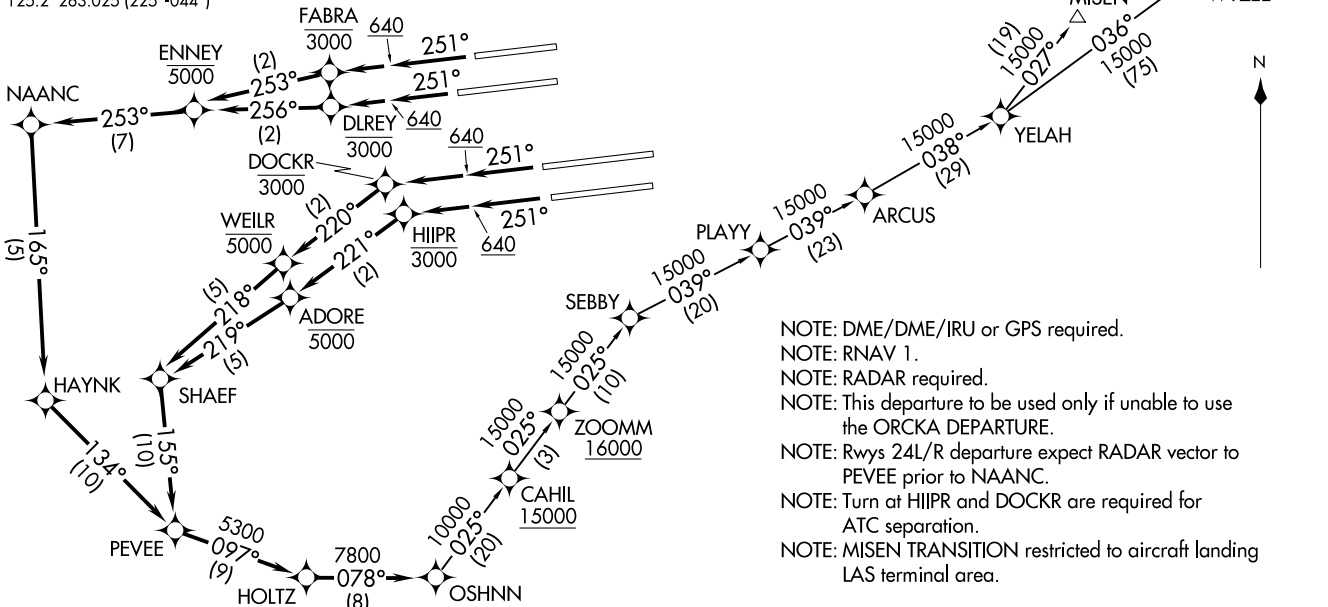
SW-3, 22 FEB 2024 to 21 MAR 2024

**TOP ALTITUDE:
17000**

D-ATIS DEP
135.65
CLNC DEL
120.35 327.0
CPDLC
GND CON
(N) 121.65 327.0
(S) 121.75 327.0
(W) 121.4 327.0
LOS ANGELES TOWER
(N) 133.9 239.3
(S) 120.95 379.1
SOCAL DEP CON
124.3 363.2 (045°-224°)
125.2 263.025 (225°-044°)

TAKEOFF MINIMUMS

Rwys 6L/R, 7L/R: NA-ATC.
Rwys 24L/R, 25L/R: Standard with minimum climb
of 500' per NM to 640.



- NOTE: DME/DME/IRU or GPS required.
- NOTE: RNAV 1.
- NOTE: RADAR required.
- NOTE: This departure to be used only if unable to use the ORCA DEPARTURE.
- NOTE: Rwys 24L/R departure expect RADAR vector to PEVEE prior to NAANC.
- NOTE: Turn at HIIPR and DOCKR are required for ATC separation.
- NOTE: MISEN TRANSITION restricted to aircraft landing LAS terminal area.

(NARRATIVE ON FOLLOWING PAGE)

NOTE: Chart not to scale.

OSHHN1.OSHHN1 17JUN21
OSHHN ONE DEPARTURE (RNAV)

LOS ANGELES, CALIFORNIA
LOS ANGELES INTL (LAX)

OSHHN1.OSHHN1 21168
OSHHN ONE DEPARTURE (RNAV)

AL-237 (FAA)

LOS ANGELES INTL (LAX)
LOS ANGELES, CALIFORNIA



DEPARTURE ROUTE DESCRIPTION

TAKEOFF RUNWAY 24L: Climb on heading 251° to 640, then climb direct to cross DLREY at or below 3000, then on track 256° to cross ENNEY at or below 5000, then on depicted route to OSHNN, thence. . . .

TAKEOFF RUNWAY 24R: Climb on heading 251° to 640, then climb direct to cross FABRA at or below 3000, then on track 253° to cross ENNEY at or below 5000, then on depicted route to OSHNN, thence. . . .

TAKEOFF RUNWAY 25L: Climb on heading 251° to 640, then climb direct to cross HIIPR at or below 3000, then on track 221° to cross ADORE at or below 5000, then on depicted route to OSHNN, thence. . . .

TAKEOFF RUNWAY 25R: Climb on heading 251° to 640, then climb direct to cross DOCKR at or below 3000, then on track 220° to cross WEILR at or below 5000, then on depicted route to OSHNN, thence. . . .

. . . .on (transition). Maintain 17000. Expect filed altitude five minutes after departure.

BEALE TRANSITION (OSHNN1.BEALE)

MISEN TRANSITION (OSHNN1.MISEN)

SW-3, 22 FEB 2024 to 21 MAR 2024

SW-3, 22 FEB 2024 to 21 MAR 2024

PERCH THREE DEPARTURE

AL-237 (FAA)

LOS ANGELES INTL (LAX)
LOS ANGELES, CALIFORNIA

SOCAL DEP CON
 124.3 363.2 (045°-224°)
 125.2 263.025 (225°-044°)
 D-ATIS DEP
 135.65
 CLNC DEL
 120.35 327.0
 CPDLC
 GND CON
 (N) 121.65 327.0
 (S) 121.75 327.0
 (W) 121.4 327.0
 LOS ANGELES TOWER
 (N) 133.9 239.3
 (S) 120.95 379.1

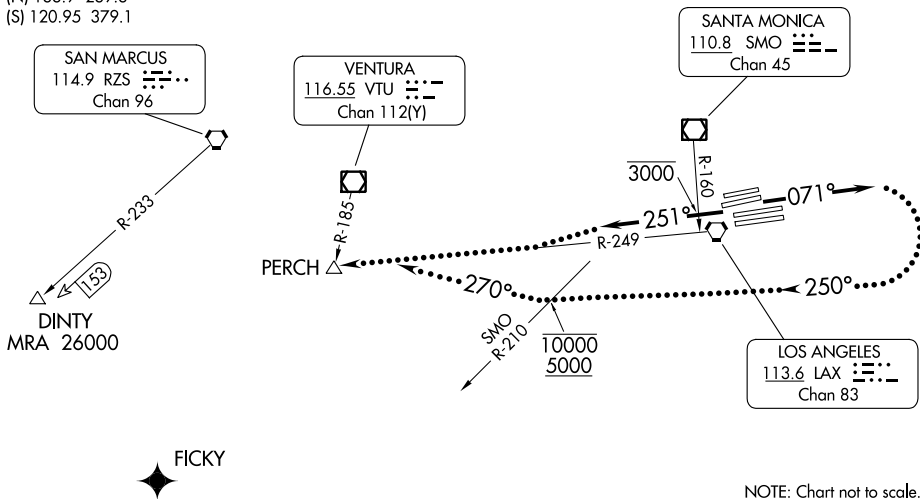
TAKEOFF MINIMUMS

Rwys 6L/R, 7L/R, 24L/R, 25L/R: Standard.

**TOP ALTITUDE:
ASSIGNED BY ATC**

NOTE: RADAR and DME required.

NOTE: Route depicted is a LOST COMMUNICATION PROCEDURE only.



NOTE: Chart not to scale.

DEPARTURE ROUTE DESCRIPTION

TAKEOFF RUNWAYS 6L/R, 7L/R: Climb on heading 071° for RADAR vectors to DINTY or FICKY, thence. . . .

TAKEOFF RUNWAYS 24L/R, 25L/R: Climb on heading 251° to cross SMO R-160 at or below 3000, then on RADAR vectors to DINTY or FICKY, thence. . . .

. . . .on (assigned route). All aircraft expect further clearance to filed altitude 5 minutes after departure.

LOST COMMUNICATIONS:

TAKEOFF RUNWAYS 6L/R, 7L/R: If not in contact with Departure Control within 3 minutes after departure, turn right heading 250°, cross SMO R-210 at or above 5000 and at or below 10000. After leaving 10000, turn right heading 270° to intercept and proceed on LAX R-249 to PERCH INT. Climb to FL230 or filed altitude whichever is lower. Aircraft filing FL240 or above climb to filed altitude 10 minutes after departure.

TAKEOFF RUNWAYS 24L/R, 25L/R: If not in contact with Departure Control within 5 minutes after departure, proceed to PERCH INT on LAX R-249. Climb to FL230 or filed altitude whichever is lower. Aircraft filing FL240 or above climb to filed altitude 10 minutes after departure.

PERCH THREE DEPARTURE

SW-3, 22 FEB 2024 to 21 MAR 2024

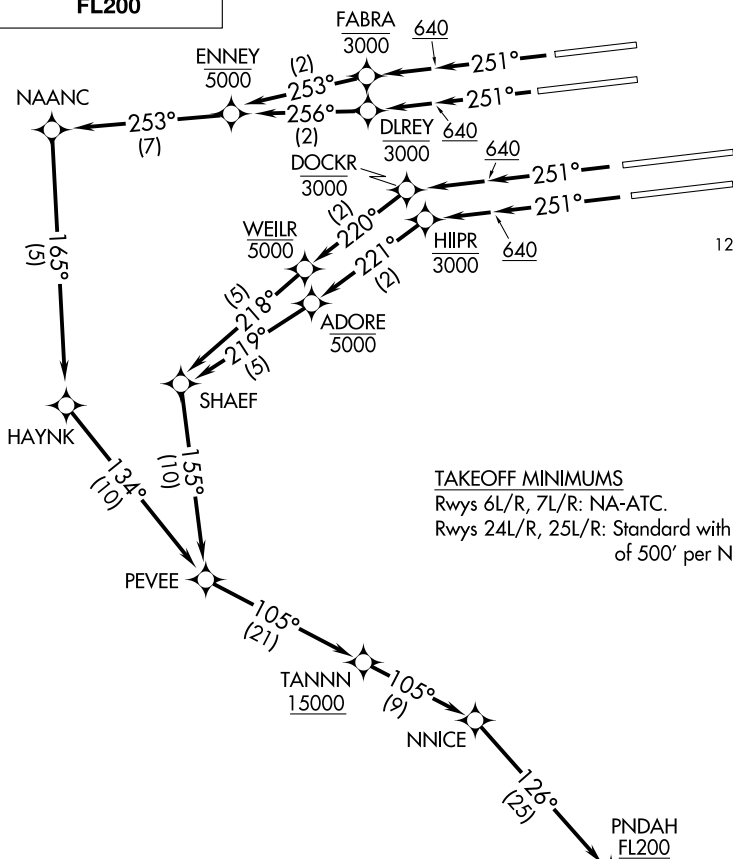
SW-3, 22 FEB 2024 to 21 MAR 2024

PNDHA TWO DEPARTURE (RNAV)

AL-237 (FAA)

LOS ANGELES INTL (LAX)
LOS ANGELES, CALIFORNIA

**TOP ALTITUDE:
FL200**



D-ATIS DEP 135.65
 CLNC DEL 120.35 327.0
 CPDLC
 GND CON (N) 121.65 327.0
 (S) 121.75 327.0
 (W) 121.4 327.0
 LOS ANGELES TOWER (N) 133.9 239.3
 (S) 120.95 379.1
 SOCAL DEP CON 124.3 363.2 (045°-224°)
 125.2 263.025 (225°-044°)

TAKEOFF MINIMUMS
 Rwy 6L/R, 7L/R: NA-ATC.
 Rwy 24L/R, 25L/R: Standard with minimum climb of 500' per NM to 640.

- NOTE: DME/DME/IRU or GPS required.
- NOTE: RADAR required.
- NOTE: RNAV 1.
- NOTE: Turbojet aircraft only.
- NOTE: Turn at HIIPR and DOCKR are required for ATC separation.

(NARRATIVE ON FOLLOWING PAGE)

NOTE: Chart not to scale.

PNDHA TWO DEPARTURE (RNAV)

LOS ANGELES, CALIFORNIA
LOS ANGELES INTL (LAX)

SW-3, 22 FEB 2024 to 21 MAR 2024

SW-3, 22 FEB 2024 to 21 MAR 2024



DEPARTURE ROUTE DESCRIPTION

TAKEOFF RUNWAY 24L: Climb heading 251° to 640, then climb direct to cross DLREY at or below 3000, then on track 256° to cross ENNEY at or below 5000, then on depicted route to PND AH, thence. . . .

TAKEOFF RUNWAY 24R: Climb heading 251° to 640, then climb direct to cross FABRA at or below 3000, then on track 253° to cross ENNEY at or below 5000, then on depicted route to PND AH, thence. . . .

TAKEOFF RUNWAY 25L: Climb heading 251° to 640, then climb direct to cross HIIPR at or below 3000, then on track 221° to cross ADORE at or below 5000, then on depicted route to PND AH, thence. . . .

TAKEOFF RUNWAY 25R: Climb heading 251° to 640, then climb direct to cross DOCKR at or below 3000, then on track 220° to cross WEILR at or below 5000, then on depicted route to PND AH, thence. . . .

. . . .on (transition). Maintain FL200. Expect filed altitude five minutes after departure.

OTAYY TRANSITION (PND AH2.OTAYY)

TCATE TRANSITION (PND AH2.TCATE)

SW-3, 22 FEB 2024 to 21 MAR 2024

SW-3, 22 FEB 2024 to 21 MAR 2024

(SLI8.SLI) 23334

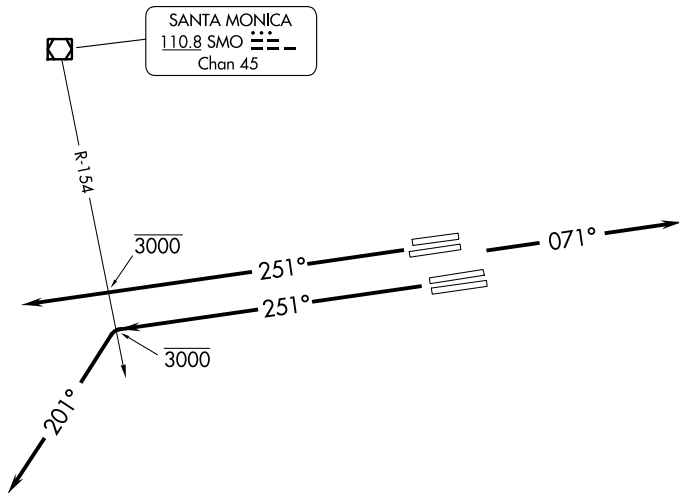
SEAL BEACH EIGHT DEPARTURE

AL-237 (FAA)

LOS ANGELES INTL (LAX)
LOS ANGELES, CALIFORNIA

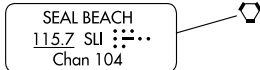
**TOP ALTITUDE:
ASSIGNED BY ATC**

SOCAL DEP CON
 124.3 363.2 (045°-224°)
 125.2 263.025 (225°-044°)
 D-ATIS DEP
 135.65
 CLNC DEL
 120.35 327.0
 CPDLC
 GND CON
 (N) 121.65 327.0
 (S) 121.75 327.0
 (W) 121.4 327.0
 LOS ANGELES TOWER
 (N) 133.9 239.3
 (S) 120.95 379.1



TAKEOFF MINIMUMS

Rwys 6L/R, 7L/R, 24L/R, 25L/R: Standard.



NOTE: TAKEOFF RWYS 24L/R, 25L/R: This departure is for non-turbojet aircraft. Turbojet aircraft use LAXX DEPARTURE.

NOTE: South Complex turn at SMO R-154 to 201° is required for ATC separation.

NOTE: Chart not to scale.

DEPARTURE ROUTE DESCRIPTION

TAKEOFF RUNWAYS 6L/R, 7L/R: Climb on heading 071° for RADAR vectors to SLI VORTAC, thence. . . .

TAKEOFF RUNWAYS 24L/R: Climb on heading 251° to cross SMO R-154 at or below 3000, then RADAR vectors to SLI VORTAC, thence. . . .

TAKEOFF RUNWAYS 25L/R: Climb on heading 251° to cross SMO R-154 at or below 3000, then turn left heading 201° for RADAR vectors to SLI VORTAC, thence. . . .

. . . .on (assigned route). All aircraft expect further clearance to filed altitude 5 minutes after departure.

LOST COMMUNICATIONS: If not in contact with Departure Control within five minutes after departure, climb to FL230 or filed altitude whichever is lower. Aircraft filing FL240 or above climb to filed altitude ten minutes after departure.

SEAL BEACH EIGHT DEPARTURE

(SLI8.SLI) 17AUG17

LOS ANGELES, CALIFORNIA
LOS ANGELES INTL (LAX)

SW-3, 22 FEB 2024 to 21 MAR 2024

SW-3, 22 FEB 2024 to 21 MAR 2024

(SEBBY3.DAG) 23334


SEBBY THREE DEPARTURE

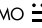
AL-237 (FAA)

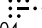
LOS ANGELES INTL (LAX)
LOS ANGELES, CALIFORNIA

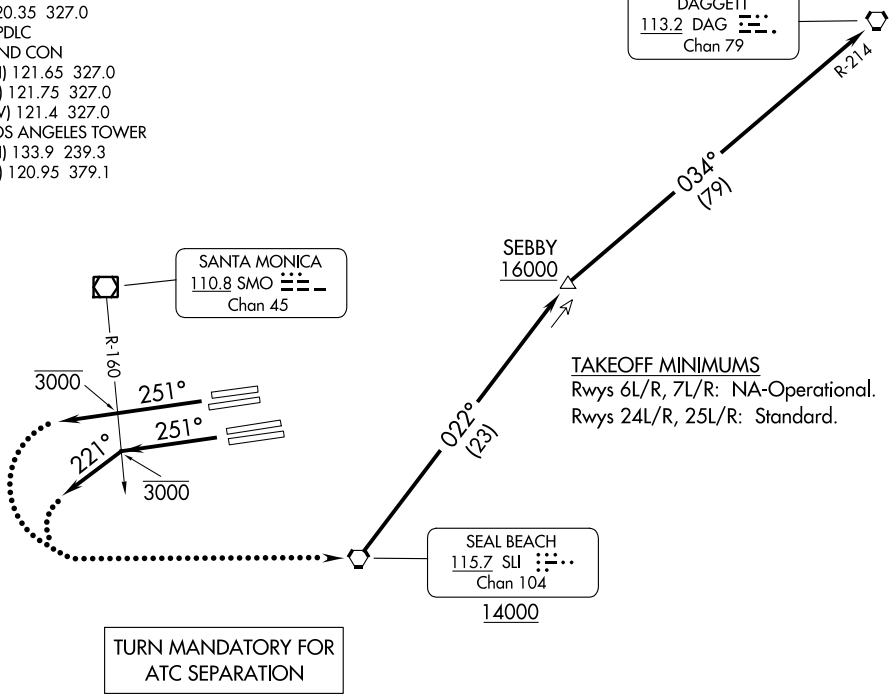
SOCAL DEP CON
 124.3 363.2 (045°-224°)
 125.2 263.025 (225°-044°)
 D-ATIS DEP
 135.65
 CLNC DEL
 120.35 327.0
 CPDLC
 GND CON
 (N) 121.65 327.0
 (S) 121.75 327.0
 (W) 121.4 327.0
 LOS ANGELES TOWER
 (N) 133.9 239.3
 (S) 120.95 379.1

**TOP ALTITUDE:
ASSIGNED BY ATC**

DAGGETT
 113.2 DAG 
 Chan 79

SANTA MONICA
 110.8 SMO 
 Chan 45

SEAL BEACH
 115.7 SLI 
 Chan 104
 14000



TAKEOFF MINIMUMS
 Rwy 6L/R, 7L/R: NA-Operational.
 Rwy 24L/R, 25L/R: Standard.

**TURN MANDATORY FOR
ATC SEPARATION**

South complex turn at SMO R-160 to 221° is required for ATC separation.

NOTE: DME and RADAR required.

NOTE: Chart not to scale.

SW-3, 22 FEB 2024 to 21 MAR 2024

SW-3, 22 FEB 2024 to 21 MAR 2024



DEPARTURE ROUTE DESCRIPTION

TAKEOFF RUNWAYS 24L/R: Climb on heading 251° to cross SMO VOR/DME R-160 at or below 3000, thence. . . .

TAKEOFF RUNWAYS 25L/R: Climb on heading 251°, at the SMO VOR/DME R-160 turn left heading 221°, cross SMO R-160 at or below 3000, thence. . . .

. . . .on RADAR vectors to cross SLI VORTAC at or above 14000, then on SLI R-022 to cross SEBBY/23 DME FIX at or above 16000. Then on DAG R-214 to DAG VORTAC. All aircraft expect further clearance to filed flight level five minutes after departure.

LOST COMMUNICATIONS: If not in contact with Departure Control within five minutes after departure, turn left direct SLI VORTAC and proceed on assigned route, climb to FL230 or filed altitude whichever is lower. Aircraft filed FL240 or above climb to filed altitude ten minutes after departure.

SEBBY THREE DEPARTURE

(SEBBY3.DAG) 19JUL18

LOS ANGELES, CALIFORNIA
LOS ANGELES INTL (LAX)

(SKWRL2.SKWRL) 17229

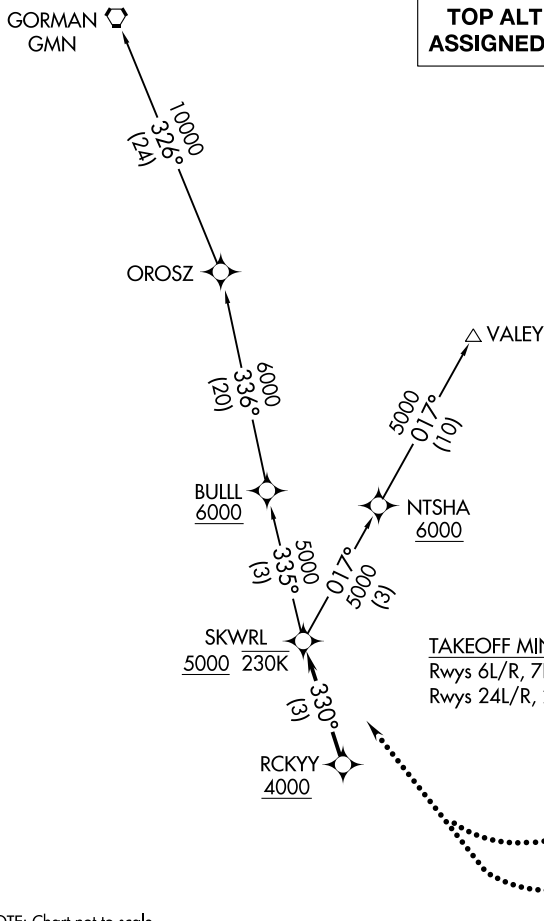
SKWRL TWO DEPARTURE (RNAV)

AL-237 (FAA)

LOS ANGELES INTL (LAX)
LOS ANGELES, CALIFORNIA

**TOP ALTITUDE:
ASSIGNED BY ATC**

D-ATIS DEP 135.65
 CLNC DEL 120.35 327.0
 CPDLC
 GND CON (N) 121.65 327.0
 (S) 121.75 327.0
 (W) 121.4 327.0
 LOS ANGELES TOWER (N) 133.9 239.3
 (S) 120.95 379.1
 SOCAL DEP CON 124.3 363.2 (045°-224°)
 125.2 263.025 (225°-044°)



NOTE: DME/DME/IRU or GPS required.
 NOTE: RADAR required.
 NOTE: RNAV 1.
 NOTE: Turboprop aircraft only.

TAKEOFF MINIMUMS

Rwys 6L/R, 7L/R: NA-ATC.

Rwys 24L/R, 25L/R: Standard with minimum climb of 500' per NM to 640.

NOTE: Chart not to scale.

DEPARTURE ROUTE DESCRIPTION

TAKEOFF RUNWAYS 24L/R, 25 L/R: Climb heading 251° to 640, then on heading 251° or as assigned by ATC, expect vectors to cross RCKYY at or above 4000, then on track 330° to cross SKWRL at or above 5000, thence. . . .

. . . .on (transition). Maintain ATC assigned altitude. Expect filed altitude five minutes after departure.

LOST COMMUNICATIONS: If not in contact with departure control within five minutes after departure, turn right and proceed direct SKWRL W/P, climb to 7000 or filed altitude whichever is lower, and when able proceed direct filed or assigned route/fix/transition. Aircraft filing 8000 or above, climb to filed altitude ten minutes after departure.

GORMAN TRANSITION (SKWRL2.GMN)

VALEY TRANSITION (SKWRL2.VALEY)

SKWRL TWO DEPARTURE (RNAV)

(SKWRL2.SKWRL) 17AUG17

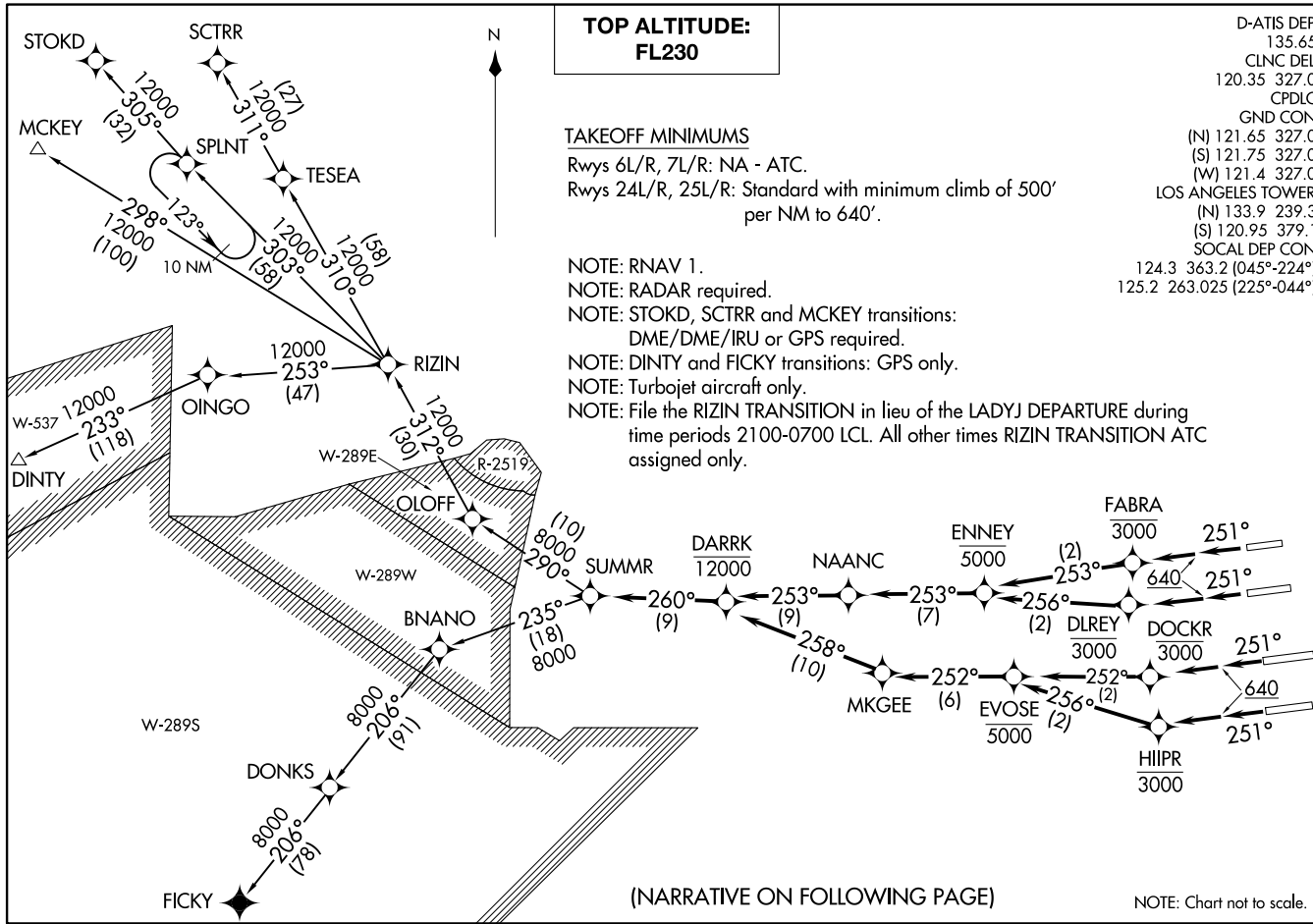
LOS ANGELES, CALIFORNIA
LOS ANGELES INTL (LAX)

SW-3, 22 FEB 2024 to 21 MAR 2024

SW-3, 22 FEB 2024 to 21 MAR 2024

SUMMR TWO DEPARTURE (RNAV)
(SUMMR2.SUMMR) 100CT19

LOS ANGELES, CALIFORNIA
LOS ANGELES INTL (LAX)



**TOP ALTITUDE:
FL230**

TAKEOFF MINIMUMS

Rwys 6L/R, 7L/R: NA - ATC.

Rwys 24L/R, 25L/R: Standard with minimum climb of 500' per NM to 640'.

NOTE: RNAV 1.

NOTE: RADAR required.

NOTE: STOKD, SCTRR and MCKEY transitions: DME/DME/IRU or GPS required.

NOTE: DINTY and FICKY transitions: GPS only.

NOTE: Turbojet aircraft only.

NOTE: File the RIZIN TRANSITION in lieu of the LADYJ DEPARTURE during time periods 2100-0700 LCL. All other times RIZIN TRANSITION ATC assigned only.

D-ATIS DEP 135.65
 CLNC DEL 120.35 327.0
 CPDLC
 GND CON (N) 121.65 327.0
 (S) 121.75 327.0
 (W) 121.4 327.0
 LOS ANGELES TOWER (N) 133.9 239.3
 (S) 120.95 379.1
 SOCAL DEP CON 124.3 363.2 (045°-224°)
 125.2 263.025 (225°-044°)

(SUMMR2.SUMMR) 19283
SUMMR TWO DEPARTURE (RNAV)

AL-237 (FAA)

LOS ANGELES INTL (LAX)
LOS ANGELES, CALIFORNIA

(NARRATIVE ON FOLLOWING PAGE)

NOTE: Chart not to scale.



DEPARTURE ROUTE DESCRIPTION

TAKEOFF RUNWAY 24L: Climb heading 251° to 640, then climb direct to cross DLREY at or below 3000, then on track 256° to cross ENNEY at or below 5000, then on track 253° to NAANC, then on track 253° to cross DARRK at or below 12000, then on track 260° to SUMMR, thence. . . .

TAKEOFF RUNWAY 24R: Climb heading 251° to 640, then climb direct to cross FABRA at or below 3000, then on track 253° to cross ENNEY at or below 5000, then on track 253° to NAANC, then on track 253° to cross DARRK at or below 12000, then on track 260° to SUMMR, thence. . . .

TAKEOFF RUNWAY 25L: Climb heading 251° to 640, then climb direct to cross HIIPR at or below 3000, then on track 256° to cross EVOSE at or below 5000, then on track 252° to MKGEE, then on track 258° to cross DARRK at or below 12000, then on track 260° to SUMMR, thence. . . .

TAKEOFF RUNWAY 25R: Climb heading 251° to 640, then climb direct to cross DOCKR at or below 3000, then on track 252° to cross EVOSE at or below 5000, then on track 252° to MKGEE, then on track 258° to cross DARRK at or below 12000, then on track 260° to SUMMR, thence. . . .

. . . .on (transition) maintain FL230. Expect filed altitude 5 minutes after departure.

DINTY TRANSITION (SUMMR2.DINTY)

FICKY TRANSITION (SUMMR2.FICKY)

MCKEY TRANSITION (SUMMR2.MCKEY)

RIZIN TRANSITION (SUMMR2.RIZIN)

SCTRR TRANSITION (SUMMR2.SCTRR)

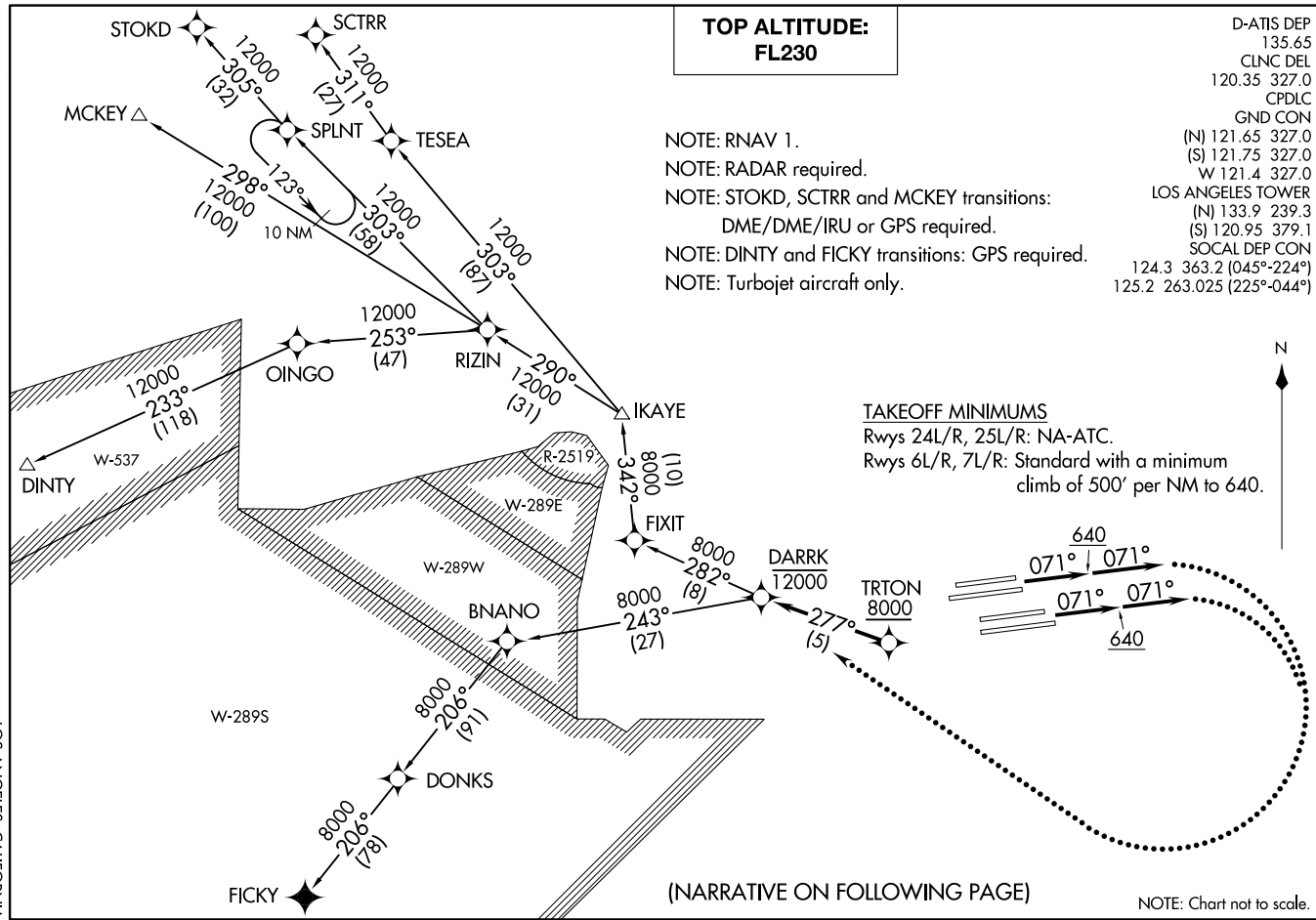
STOKD TRANSITION (SUMMR2.STOKD)

SW-3, 22 FEB 2024 to 21 MAR 2024

SW-3, 22 FEB 2024 to 21 MAR 2024

TRITON TWO DEPARTURE (RNAV)
(TRITON2.TRITON) 01 FEB 18

LOS ANGELES, CALIFORNIA
LOS ANGELES INTL (LAX)



D-ATIS DEP 135.65
CLINC DEL 120.35 327.0
CPDLC
GND CON (N) 121.65 327.0
(S) 121.75 327.0
W 121.4 327.0
LOS ANGELES TOWER (N) 133.9 239.3
(S) 120.95 379.1
SOCAL DEP CON 124.3 363.2 (045°-224°)
125.2 263.025 (225°-044°)

(TRITON2.TRITON) 18032
TRITON TWO DEPARTURE (RNAV)

AL-237 (FAA)

LOS ANGELES INTL (LAX)
LOS ANGELES, CALIFORNIA



DEPARTURE ROUTE DESCRIPTION

TAKEOFF RUNWAYS 6L/R, 7L/R: Climb on heading 071° to 640, then climb on heading 071° or as assigned by ATC, expect vectors to cross TRTON at or above 8000, then on track 277° to cross DARRK at or below 12000, thence. . . .

. . . .on (transition) maintain FL230. Expect filed altitude 5 minutes after departure.

LOST COMMUNICATIONS

If not in contact with departure control within 5 minutes after departure, turn right and proceed direct DARRK WP, cross DARRK at or below 12000'. Climb to FL230 or filed altitude, whichever is lower, and when able proceed direct filed route or assigned route/fix/transition. Aircraft filing FL240 or above, climb to filed altitude ten minutes after departure.

DINTY TRANSITION (TRTON2.DINTY)

FICKY TRANSITION (TRTON2.FICKY)

MCKEY TRANSITION (TRTON2.MCKEY)

SCTRR TRANSITION (TRTON2.SCTRR)

STOKD TRANSITION (TRTON2.STOKD)

SW-3, 22 FEB 2024 to 21 MAR 2024

SW-3, 22 FEB 2024 to 21 MAR 2024

(VTU8.VTU) 23334

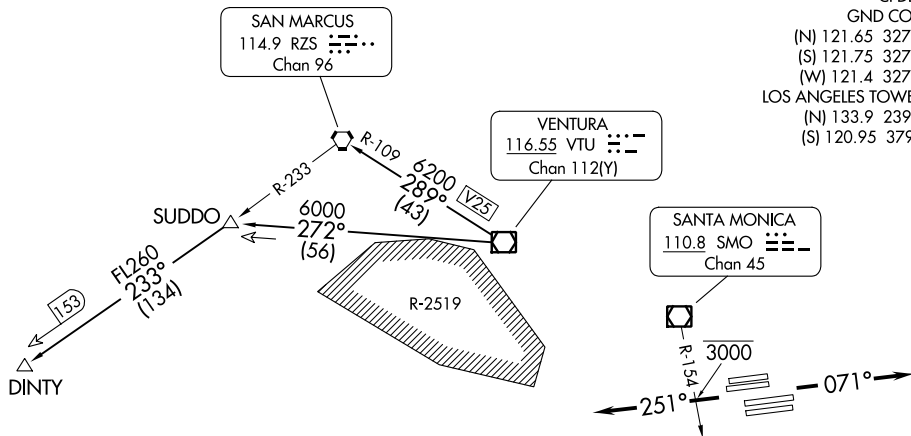
VENTURA EIGHT DEPARTURE

AL-237 (FAA)

LOS ANGELES INTL (LAX)
LOS ANGELES, CALIFORNIA

**TOP ALTITUDE:
ASSIGNED BY ATC**

SOCAL DEP CON
124.3 363.2 (045°-224°)
125.2 263.025 (225°-044°)
D-ATIS DEP
135.65
CLNC DEL
120.35 327.0
CPDLC
GND CON
(N) 121.65 327.0
(S) 121.75 327.0
(W) 121.4 327.0
LOS ANGELES TOWER
(N) 133.9 239.3
(S) 120.95 379.1



TAKEOFF MINIMUMS

Rwys 6L/R, 7L/R, 24L/R, 25L/R: Standard.

NOTE: RADAR required.

NOTE: DINTY Transition: DME required.

NOTE: Chart not scale.

DEPARTURE ROUTE DESCRIPTION

TAKEOFF RUNWAYS 6L/R, 7L/R: Climb on heading 071° for RADAR vectors to VTU VOR/DME, thence. . . .

TAKEOFF RUNWAYS 24L/R, 25L/R: Climb on heading 251° for RADAR vectors to VTU VOR/DME, cross SMO R-154 at or below 3000, thence. . . .

. . . .on (assigned route). All aircraft expect further clearance to filed altitude 5 minutes after departure.

LOST COMMUNICATIONS: If not in contact with Departure Control within five minutes after departure climb to FL230 or filed altitude, whichever is lower. Aircraft filing FL240 or above climb to filed altitude ten minutes after departure.

DINTY TRANSITION (VTU8.DINTY): From over VTU VOR/DME on VTU R-272 to SUDDO INT then on RZS R-233 to DINTY.

SAN MARCUS TRANSITION (VTU8.RZS): From over VTU VOR/DME on VTU R-289 and RZS R-109 to RZS VORTAC.

VENTURA EIGHT DEPARTURE

(VTU8.VTU) 17AUG17

LOS ANGELES, CALIFORNIA
LOS ANGELES INTL (LAX)

SW-3, 22 FEB 2024 to 21 MAR 2024

SW-3, 22 FEB 2024 to 21 MAR 2024

(WNN DY3.WNN DY) 19003

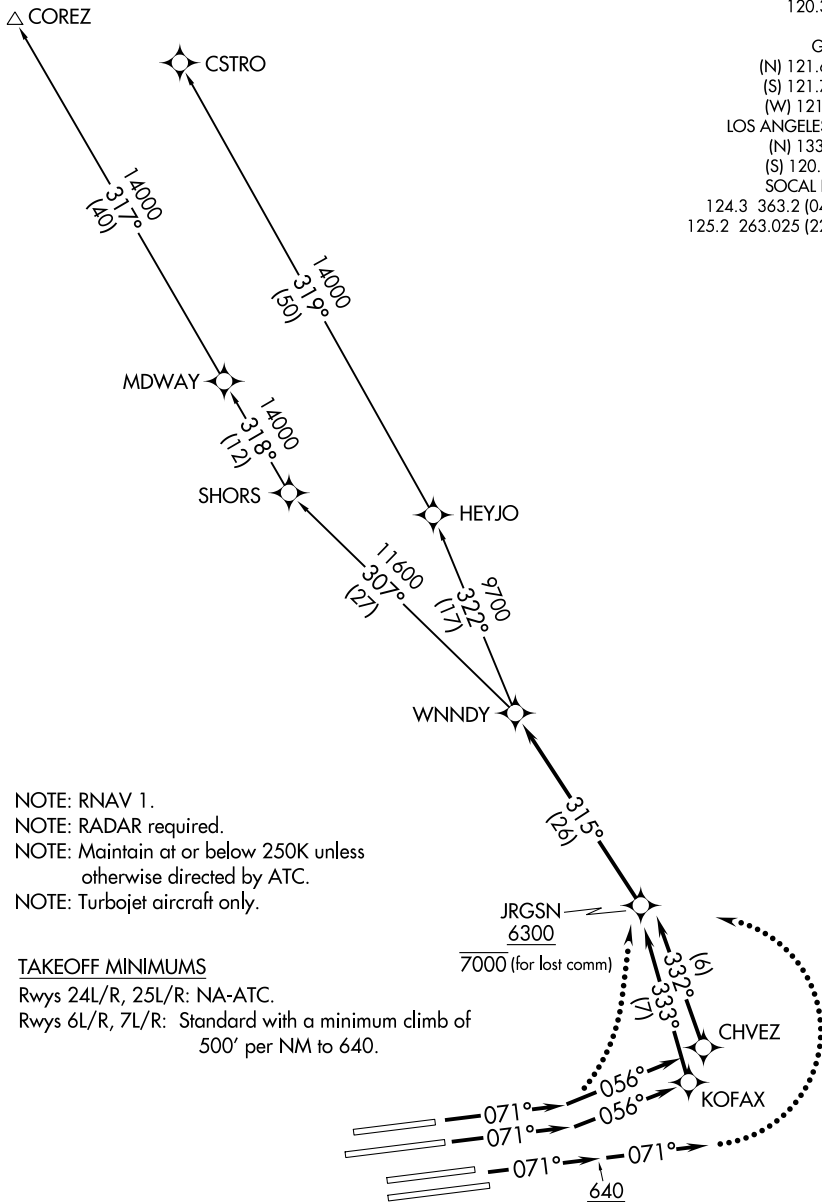
WNN DY THREE DEPARTURE (RNAV)

AL-237 (FAA)

LOS ANGELES INTL (LAX)
LOS ANGELES, CALIFORNIA

**TOP ALTITUDE:
FL230**

D-ATIS DEP 135.65
 CLNC DEL 120.35 327.0
 CPDLC
 GND CON (N) 121.65 327.0
 (S) 121.75 327.0
 (W) 121.4 327.0
 LOS ANGELES TOWER (N) 133.9 239.3
 (S) 120.95 379.1
 SOCAL DEP CON 124.3 363.2 (045°-224°)
 125.2 263.025 (225°-044°)



NOTE: RNAV 1.
 NOTE: RADAR required.
 NOTE: Maintain at or below 250K unless otherwise directed by ATC.
 NOTE: Turbojet aircraft only.

TAKEOFF MINIMUMS

Rwys 24L/R, 25L/R: NA-ATC.
 Rwys 6L/R, 7L/R: Standard with a minimum climb of 500' per NM to 640.

(NARRATIVE ON FOLLOWING PAGE)

NOTE: Chart not to scale.

WNN DY THREE DEPARTURE (RNAV)

LOS ANGELES, CALIFORNIA
LOS ANGELES INTL (LAX)

(WNN DY3.WNN DY) 03JAN19

SW-3, 22 FEB 2024 to 21 MAR 2024

SW-3, 22 FEB 2024 to 21 MAR 2024



DEPARTURE ROUTE DESCRIPTION

TAKEOFF RUNWAY 6L: Climb heading 071° to intercept course 056° to CHVEZ, then on track 332° to cross JRGSN at or above 6300, then on track 315° to WNNDY, thence. . . .

TAKEOFF RUNWAY 6R: Climb heading 071° to intercept course 056° to KOFAX, then on track 333° to cross JRGSN at or above 6300, then on track 315° to WNNDY, thence. . . .

TAKEOFF RUNWAYS 7L/R: Climb heading 071° to 640, then on heading 071° or as assigned by ATC, for vectors to cross JRGSN at or above 6300, then on track 315° to WNNDY, thence. . . .

. . . .on (transition) maintain FL230. Expect filed altitude 5 minutes after departure.

LOST COMMUNICATIONS

If not in contact with departure control within 5 minutes after departure, turn left and proceed direct JRGSN WP, cross JRGSN at or below 7000. Climb to FL230 or filed altitude whichever is lower, and when able proceed direct filed or assigned route/fix/transition. Aircraft filing FL240 or above, climb to filed altitude ten minutes after departure.

COREZ TRANSITION (WNNDY3.COREZ)

CSTRO TRANSITION (WNNDY3.CSTRO)

SW-3, 22 FEB 2024 to 21 MAR 2024

SW-3, 22 FEB 2024 to 21 MAR 2024

ZILLI FIVE DEPARTURE (RNAV)
(ZILLI5 ZILLI) 23FEB23

LOS ANGELES, CALIFORNIA
LOS ANGELES INTL (LAX)

D-ATIS DEP
135.65
CLNC DEL
120.35 327.0
CPDLC
GND CON
(N) 121.65 327.0
(S) 121.75 327.0
(W) 121.4 327.0
LOS ANGELES TOWER
(N) 133.9 239.3
(S) 120.95 379.1
SOCAL DEP CON
124.3 363.2 (045°-224°)
125.2 263.025 (225°-044°)

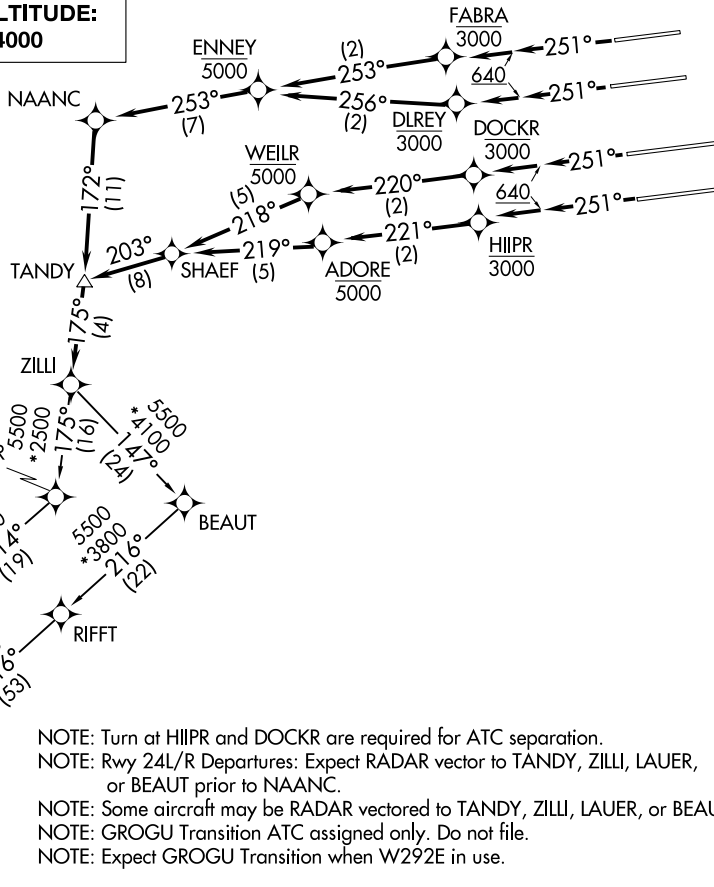
RNAV 1- GPS.
RADAR required.

**TOP ALTITUDE:
14000**



TAKEOFF MINIMUMS

Rwys 6L/R, 7L/R: NA-ATC.
Rwys 24L/R, 25L/R: Standard with minimum climb
of 500' per NM to 640.



(NARRATIVE ON FOLLOWING PAGE)

NOTE: Chart not to scale.

(ZILLI5 ZILLI) 23054
ZILLI FIVE DEPARTURE (RNAV)

AL-237 (FAA)

LOS ANGELES INTL (LAX)
LOS ANGELES, CALIFORNIA



DEPARTURE ROUTE DESCRIPTION

TAKEOFF RUNWAY 24L: Climb on heading 251° to 640, then climb direct to cross DLREY at or below 3000, then on track 256° to cross ENNEY at or below 5000, then on depicted route to ZILLI, thence

TAKEOFF RUNWAY 24R: Climb on heading 251° to 640, then climb direct to cross FABRA at or below 3000, then on track 253° to cross ENNEY at or below 5000, then on depicted route to ZILLI, thence

TAKEOFF RUNWAY 25L: Climb on heading 251° to 640, then climb direct to cross HIIIPR at or below 3000, then on track 221° to cross ADORE at or below 5000, then on depicted route to ZILLI, thence

TAKEOFF RUNWAY 25R: Climb on heading 251° to 640, then climb direct to cross DOCKR at or below 3000, then on track 220° to cross WEILR at or below 5000, then on depicted route to ZILLI, thence

. . . . on (transition). Maintain 14000, expect filed altitude five minutes after departure.

FICKY TRANSITION (ZILLI5.FICKY)

GROGU TRANSITION (ZILLI5.GROGU)

SW-3, 22 FEB 2024 to 21 MAR 2024

SW-3, 22 FEB 2024 to 21 MAR 2024