

LOC/DME I- CUA	APP CRS	Rwy Idg	8401
110.1	014°	TDZE	2176
Chan 38		Apt Elev	2181

ILS or LOC RWY 1L

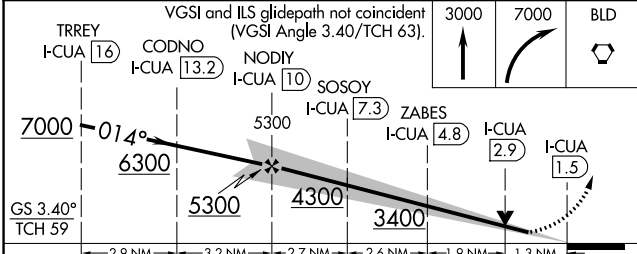
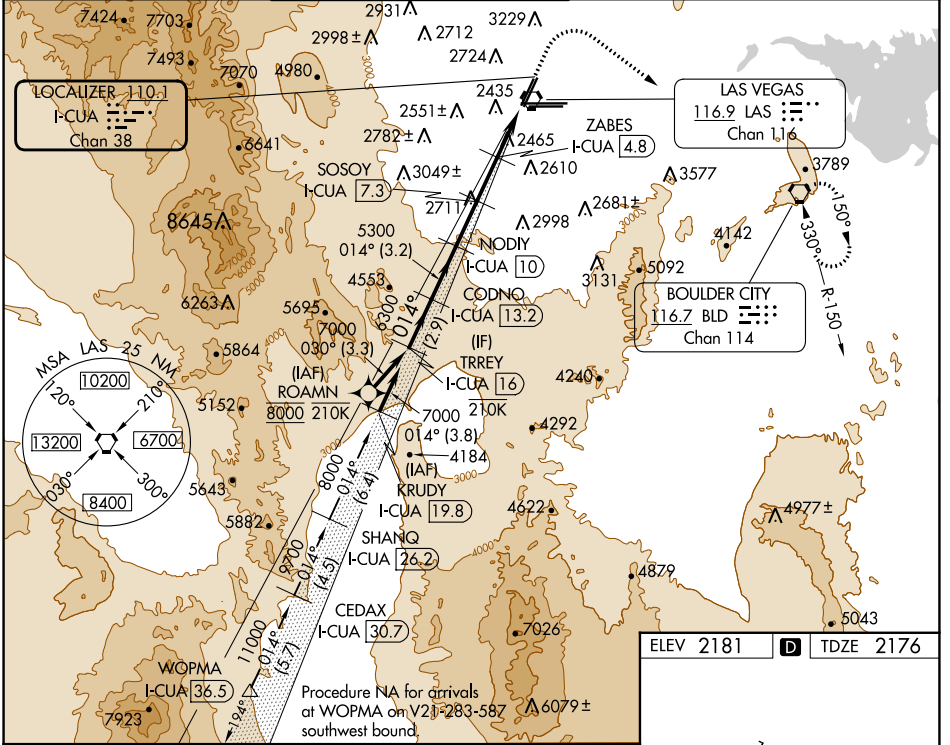
HARRY REID INTL (LAS)

DME required. RNP APCH-GPS. From ROAMN.

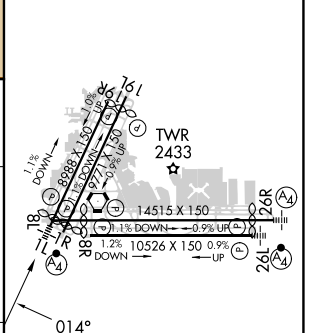
MALSF MISSED APPROACH: Climb to 3000 then climbing right turn to 7000 direct BLD VORTAC and hold, continue climb-in-hold to 7000.

V Rwy 1L helicopter visibility reduction below 3/4 SM NA.
A For inop ALS, increase S-ILS 1L all Cats visibility to 3/8 SM.

D-ATIS	LAS VEGAS APP CON	LAS VEGAS TOWER	GND CON	CLNC DEL	CPDLC
132.4	125.025 379.15 (West) 119.775 282.2 (East)	118.75 257.8 (Rwy 1L/19R, 1R/19L) 119.9 257.8 (Rwy 8L/26R, 8R/26L)	121.1 270.8 E of 1R/19L 121.9 254.3 W of 1R/19L	118.0	



ELEV 2181	D	TDZE 2176
-----------	----------	-----------



CATEGORY	A	B	C	D
S-ILS 1L	2460-3/4 284 (300-3/4)			
S-LOC 1L	2720-3/4 544 (600-3/4)	2720-1 3/8 544 (600-1 3/8)		
C CIRCLING	3020-1 1/4 839 (900-1 1/4)	3060-1 1/4 879 (900-1 1/4)	3100-2 3/4 919 (1000-2 3/4)	3540-3 1359 (1400-3)

MRL Rwy 1R-19L
 REIL Rws 1R, 8R, 19L and 19R
 HIRL Rws 1L-19R, 8L-26R and 8R-26L

SW-4, 22 FEB 2024 to 21 MAR 2024

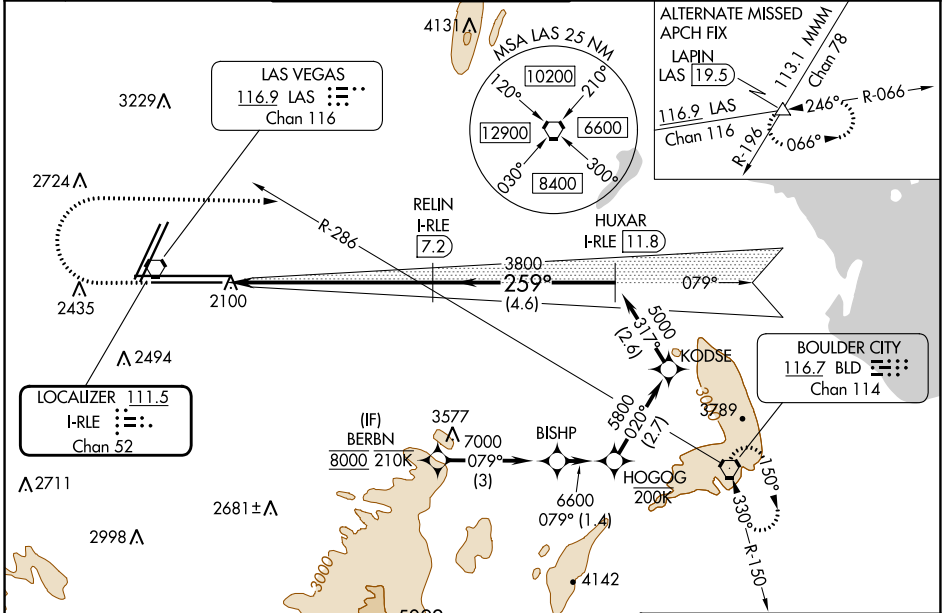
SW-4, 22 FEB 2024 to 21 MAR 2024

LOC/DME I-RLE 111.5 Chan 52	APP CRS 259°	Rwy Idg	26L	26R
		TDZE	10526	12638
			2069	2067
		Apt Elev	2181	2181

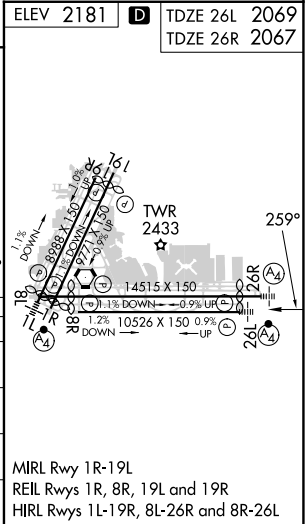
ILS Y or LOC Y RWY 26L

HARRY REID INTL (LAS)

RNP APCH - GPS. DME required.	MALSF Rwy 26L 	MALS Rwy 26R 	MISSED APPROACH: Climb to 3200 then climbing right turn to 6000 heading 080° and on BLD R-286 to BLD VORTAC and hold, continue climb-in-hold to 6000.		
<p>⚠ Inop table does not apply to S-ILS 26L or Sidestep 26R. For inop ALS increase S-LOC 26L Cats C and D visibility to 1 1/8 SM.</p>					
D-ATIS 132.4	LAS VEGAS APP CON 125.025 379.15 (West) 119.775 282.2 (East)	LAS VEGAS TOWER 118.75 257.8 (Rwy 1L/19R, 1R/19L) 119.9 257.8 (Rwy 8L/26R, 8R/26L)	GND CON 121.1 270.8 E of 1R/19L 121.9 254.3 W of 1R/19L	CLNC DEL 118.0	CPDLC



3200	6000	BLD R-286	BLD	VGSI and ILS glidepath not coincident (VGSI Angle 3.00/TCH 84).	BERBN
		RELIN I-RLE (7.2)	HUXAR I-RLE (11.8)	KODSE	BISHP
		I-RLE (3.1)	I-RLE (1.9)	HOGOG	8000
CATEGORY	A	B	C	D	
S-ILS 26L	2269-3/4 200 (100-3/4)				
S-LOC 26L	2520-3/4	451 (400-3/4)	2520-1	451 (400-1)	
SIDESTEP 26R	2560-1	493 (400-1)	2560-1 1/2	2560-2	493 (400-2)
CIRCLING	3020-1 1/4	3060-1 1/4	3100-2 3/4	3540-3	
	839 (900-1 1/4)	879 (900-1 1/4)	919 (1000-2 3/4)	1359 (1400-3)	



SW-4, 22 FEB 2024 to 21 MAR 2024

SW-4, 22 FEB 2024 to 21 MAR 2024

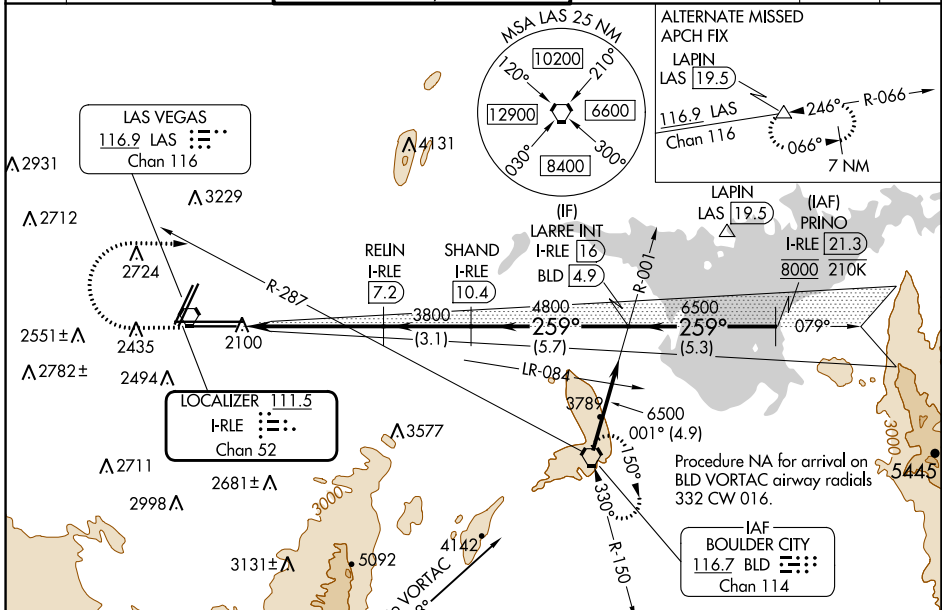
LOC/DME I-RLE 111.5 Chan 52	APP CRS 259°	Rwy Idg 26L 10526 26R 12638	TDZE 2069 2067	Apt Elev 2181 2181
---	------------------------	---	------------------------------------	--

ILS Z or LOC Z RWY 26L

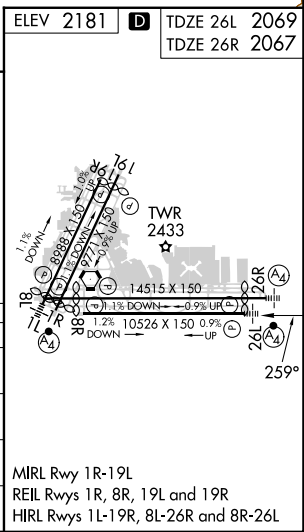
HARRY REID INTL (LAS)

DME required.	MALS Fw 26L 	MALS Rwy 26R 	MISSED APPROACH: Climb to 3200 then climbing right turn to 6000 heading 080° and on BLD R-287 to BLD VORTAC and hold, continue climb-in-hold to 6000.
Inop table does not apply to S-ILS 26L and Sidestep 26R. For inop ALS, increase S-LOC 26L Cat C/D/E visibility to 1 3/8 SM.			

D-ATIS 132.4	LAS VEGAS APP CON 125.025 379.15 (West) 119.775 282.2 (East)	LAS VEGAS TOWER 118.75 257.8 (Rwy 1L/19R, 1R/19L) 119.9 257.8 (Rwy 8L/26R, 8R/26L)	GND CON 121.1 270.8 E of 1R/19L 121.9 254.3 W of 1R/19L	CLNC DEL 118.0	CPDLC
------------------------	--	--	---	--------------------------	-------



ELEV 2181	TDZE 26L 2069	TDZE 26R 2067
3200	6000	BLD R-287
VGSI and ILS glidepath not coincident (VGSI Angle 3.00/TCH 84).		
RELIN I-RLE [3.1]	RELIN I-RLE [7.2]	SHAND I-RLE [10.4]
LARRE INT I-RLE [16]	PRINO I-RLE [21.3]	
3800	4800	6500
1.2 NM	4.1 NM	3.1 NM
5.7 NM	5.3 NM	
CATEGORY	A	B
S-ILS 26L	2269-3/4 200 (100-3/4)	
S-LOC 26L	2520-3/4 451 (400-3/4)	2520-1 451 (400-1)
SIDESTEP 26R	2560-1 493 (400-1)	2560-1 1/2 493 (400-1 1/2)
CIRCLING	3020-1 1/4 839 (900-1 1/4)	3060-1 1/4 879 (900-1 1/4)
	3100-2 3/4 919 (1000-2 3/4)	3540-3 1359 (1400-3)



SW-4, 22 FEB 2024 to 21 MAR 2024

SW-4, 22 FEB 2024 to 21 MAR 2024

LOC/DME FAS 110.3 Chan 40	APP CRS 259°	Rwy Idg 26R 26L TDZE 12638 10526 2067 2069 Apt Elev 2181 2181
--	------------------------	--

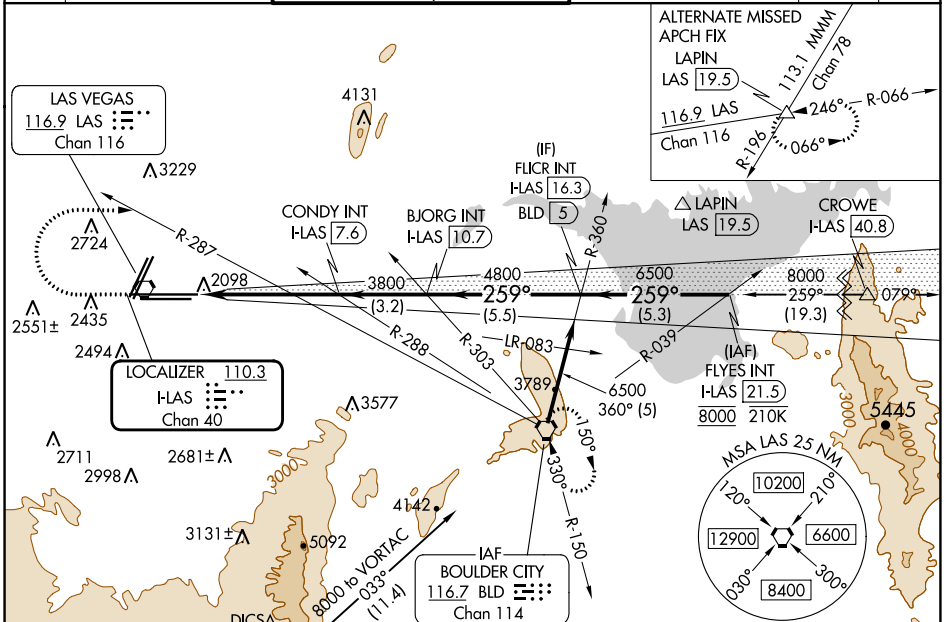
ILS Z or LOC Z RWY 26R

HARRY REID INTL (LAS)

⚠ For inop ALS, increase S-ILS-26R all Cats visibility to ½ SM, S-LOC-26R Cat E visibility to 1 ½ SM. Inop table does not apply to sidestep 26L.

MALS Rwy 26R 	MALSF Rwy 26L 	MISSED APPROACH: Climb to 3200 then climbing right turn to 6000 on heading 079° and on BLD R-287 to BLD VORTAC and hold, continue climb-in-hold to 6000.
------------------	-------------------	--

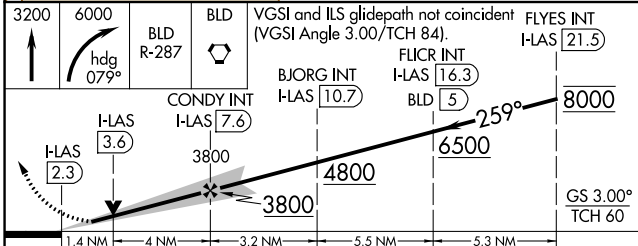
D-ATIS 132.4	LAS VEGAS APP CON 125.025 379.15 (West) 119.775 282.2 (East)	LAS VEGAS TOWER 118.75 257.8 (Rwy 1L/19R, 1R/19L) 119.9 257.8 (Rwy 8L/26R, 8R/26L)	GND CON 121.1 270.8 E of 1R/19L 121.9 254.3 W of 1R/19L	CLNC DEL 118.0	CPDLC
------------------------	--	--	---	--------------------------	-------



SW-4, 22 FEB 2024 to 21 MAR 2024

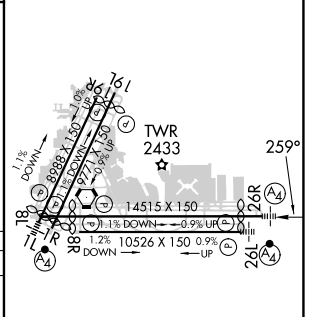
SW-4, 22 FEB 2024 to 21 MAR 2024

Procedure NA for arrivals on BLD VORTAC
airway radials 332 CW 016.



CATEGORY	A	B	C	D	E
S-ILS 26R	2334-¾ 267 (200-¾)				
S-LOC 26R	2560-¾ 493 (400-¾)		2560-1½ 493 (400-1½)		
SIDESTEP 26L	2560-1 491 (400-1)	2560-1½ 491 (400-1½)	3100-2¾	2560-2 491 (400-2)	
CIRCLING	3020-1¼ 839 (900-1¼)	3060-1¼ 879 (900-1¼)	3100-2¾ 919 (1000-2¾)	3540-3 1359 (1400-3)	

ELEV 2181	D	TDZE 26R 2067	TDZE 26L 2069
-----------	----------	---------------	---------------



MIRL Rwy 1R-19L	REIL Rws 1R, 8R, 19L and 19R	HIRL Rws 1L-19R, 8L-26R and 8R-26L
FAF to MAP 5.3 NM		
Knots	60	90 120 150 180
Min:Sec	5:18	3:32 2:39 2:07 1:46

WAAS CH 42800 W01A	APP CRS 014°	Rwy Idg TDZE Apt Elev	8785 2170 2181
--	------------------------	-----------------------------	---

RNAV (GPS) RWY 1R

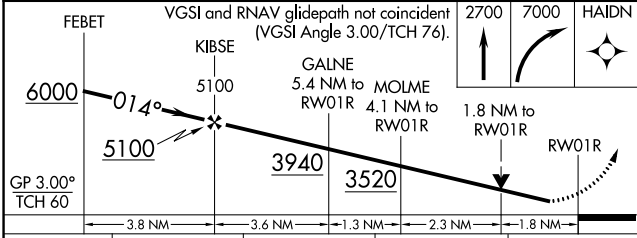
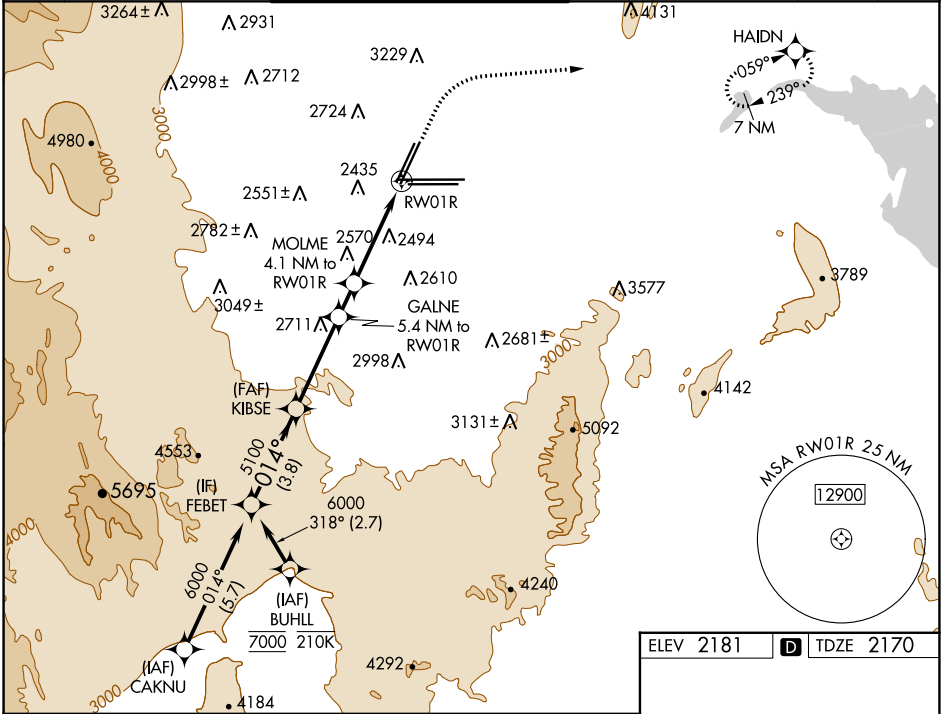
HARRY REID INTL (LAS)

RNP APCH-GPS. RADAR required.

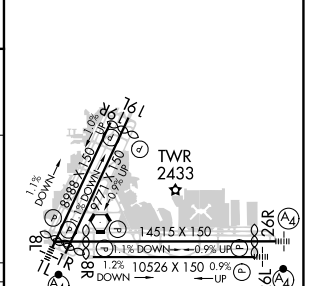
▼ Rwy 1R helicopter visibility reduction below $\frac{3}{4}$ SM NA. For uncompensated Baro-VNAV systems, LNAV/VNAV NA below -1°C or above 54°C.

MISSED APPROACH: Climb to 2700 then climbing right turn to 7000 direct HAIN and hold, continue climb-in-hold to 7000.

D-ATIS 132.4	LAS VEGAS APP CON 125.025 379.15 (West) 119.775 282.2 (East)	LAS VEGAS TOWER 118.75 257.8 (Rwy 1L/19R, 1R/19L) 119.9 257.8 (Rwy 8L/26R, 8R/26L)	GND CON 121.1 270.8 E of 1R/19L 121.9 254.3 W of 1R/19L	CLNC DEL 118.0	CPDLC
------------------------	--	--	---	--------------------------	-------



ELEV 2181	D TDZE 2170
-----------	--------------------



CATEGORY	A	B	C	D
LPV DA	2458- $\frac{7}{8}$		288 (300- $\frac{7}{8}$)	
LNAV/VNAV DA	2641-1 $\frac{3}{8}$		471 (500-1 $\frac{3}{8}$)	
LNAV MDA	2820-1	650 (700-1)	2820-1 $\frac{7}{8}$	650 (700-1 $\frac{7}{8}$)
C CIRCLING	3020-1 $\frac{1}{4}$ 839 (900-1 $\frac{1}{4}$)	3060-1 $\frac{1}{4}$ 879 (900-1 $\frac{1}{4}$)	3100-2 $\frac{3}{4}$ 919 (1000-2 $\frac{3}{4}$)	3540-3 1359 (1400-3)

SW-4, 22 FEB 2024 to 21 MAR 2024

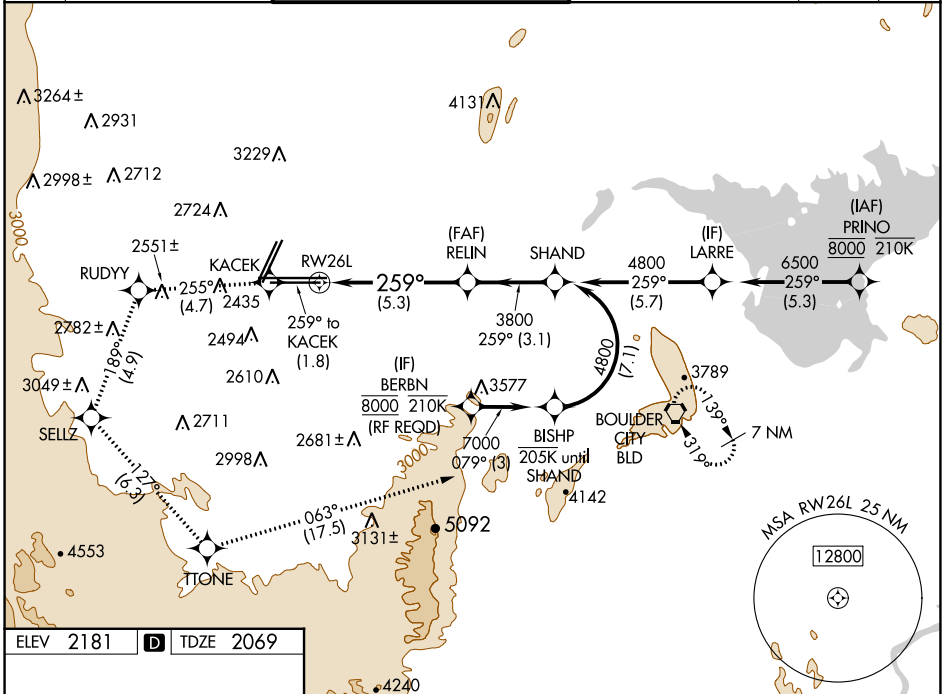
SW-4, 22 FEB 2024 to 21 MAR 2024

APP CRS	Rwy Idg	10526
259°	TDZE	2069
	Apt Elev	2181

RNAV (RNP) RWY 26L

HARRY REID INTL (LAS)

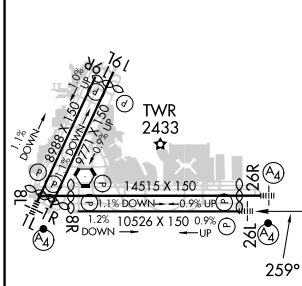
RNP AR APCH.		MALSF	MISSED APPROACH: Climb to 7000 on the RNAV missed approach route to BLD VORTAC and hold. *Missed approach requires minimum climb of 255 feet per NM to 3200.			
For uncompensated Baro-VNAV systems, procedure NA below 0°C or above 54°C.						
D-ATIS	LAS VEGAS APP CON	LAS VEGAS TOWER		GND CON	CLNC DEL	CPDLC
132.4	125.025 379.15 (West) 119.775 282.2 (East)	118.75 257.8 (Rwy 1L/19R, 1R/19L) 119.9 257.8 (Rwy 8L/26R, 8R/26L)		121.1 270.8 E of 1R/19L 121.9 254.3 W of 1R/19L	118.0	



SW-4, 22 FEB 2024 to 21 MAR 2024

SW-4, 22 FEB 2024 to 21 MAR 2024

ELEV	2181	D	TDZE	2069
------	-------------	----------	------	-------------



7000	KACEK	RUDYY	SELLZ	TITONE	BLD
↑	◆	◆	◆	◆	◆
tr 259°	tr 255°	tr 189°	tr 127°	tr 063°	
VGSI and RNAV glidepath not coincident (VGSI Angle 3.00/TCH 84). See planview for multiple IF locations.					
RELIN			SHAND		
3800			4800		
RWY26L			259°		
3800			GP 3.00°		
-5.3 NM			3.1 NM		
TCH 60					
CATEGORY	A	B	C	D	
RNP 0.30 DA*	2450-7/8		381 (300-7/8)		
RNP 0.30 DA	2502-1		433 (400-1)		

MIRL Rwy 1R-19L
REIL Rwy 1R, 8R, 19L and 19R
HIRL Rwy 1L-19R, 8L-26R and 8R-26L

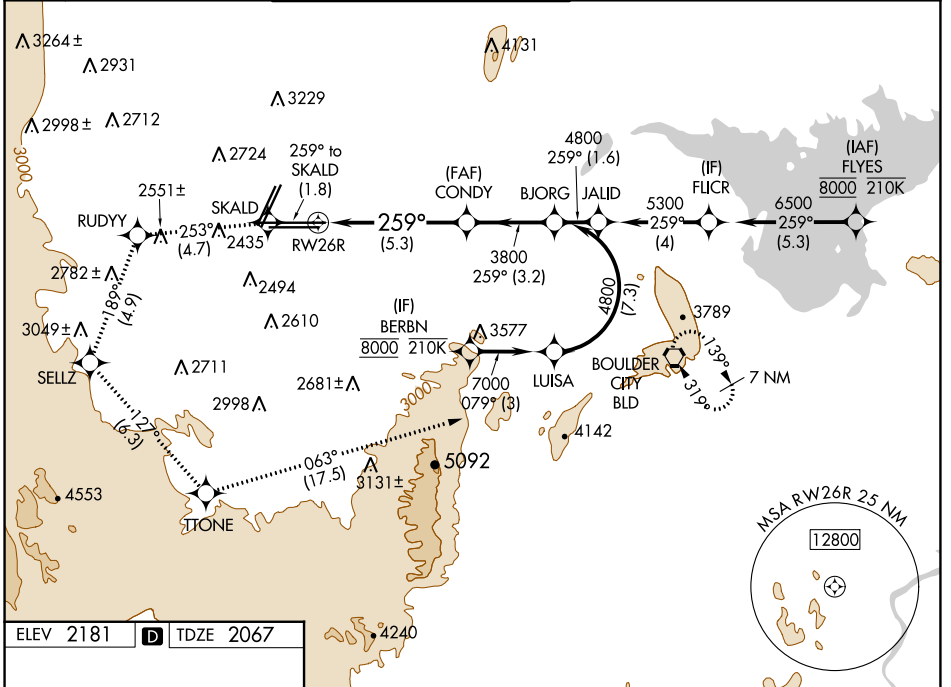
AUTHORIZATION REQUIRED

APP CRS	Rwy Idg	12638
259°	TDZE	2067
	Apt Elev	2181

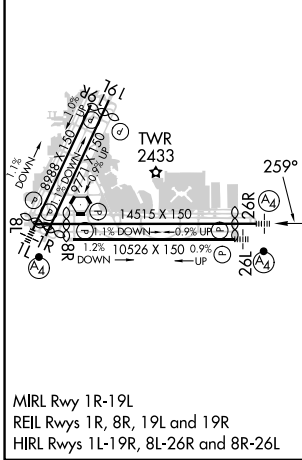
RNAV (RNP) RWY 26R

HARRY REID INTL (LAS)

RNP AR APCH-GPS.		MALS	MISSED APPROACH: Cimb to 7000 on the RNAV missed approach route to BLD VORTAC and hold. * Missed approach requires minimum climb of 230 feet per NM to 3200.		
<p>▼ For uncompensated Baro-VNAV systems, procedure NA below -1°C or above 54°C.</p>		(M)			
D-ATIS	LAS VEGAS APP CON	LAS VEGAS TOWER		GND CON	CLNC DEL
132.4	125.025 379.15 (West) 119.775 282.2 (East)	118.75 257.8 (Rwy 1L/19R, 1R/19L) 119.9 257.8 (Rwy 8L/26R, 8R/26L)		121.1 270.8 E of 1R/19L 121.9 254.3 W of 1R/19L	118.0



ELEV 2181	D	TDZE 2067
-----------	----------	-----------



7000	SKALD	RUDYY	SELTZ	TTONE	BLD
↑	◆	tr	◆	tr	◆
fr 259°	253°	189°	127°	063°	
VGSi and RNAV glidepath not coincident (VGSi Angle 3.00/TCH 84). See planview for multiple IF locations.					
CONDY		BJORG			
3800		4800			
RW26R		3800		GP 3.00° TCH 60	
-5.3 NM		-3.2 NM			
CATEGORY	A	B	C	D	
RNP 0.30 DA*	2457-7/8		390 (300-7/8)		
RNP 0.30 DA	2508-1		441 (400-1)		
AUTHORIZATION REQUIRED					

SW-4, 22 FEB 2024 to 21 MAR 2024

SW-4, 22 FEB 2024 to 21 MAR 2024

APP CRS	Rwy Idg	10526
079°	TDZE	2157
	Apt Elev	2181

RNAV (RNP) RWY 8R

HARRY REID INTL (LAS)

RNP AR APCH. RF required.
 ▼ For uncompensated Baro-VNAV systems, procedure NA below 0°C or above 54°C.

MISSED APPROACH: Climb to 7000 on the RNAV missed approach route to VMPRE and hold, continue climb-in-hold to 7000.

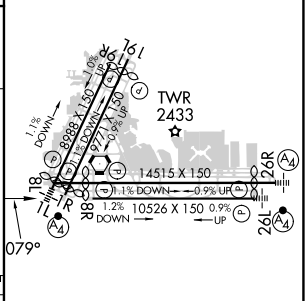
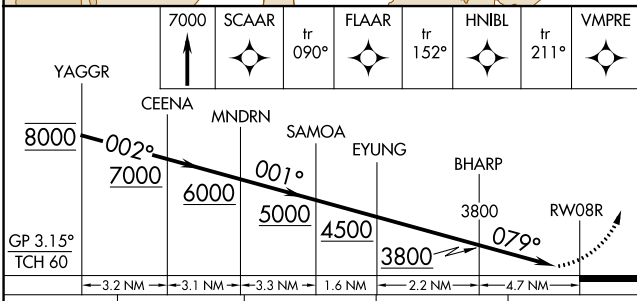
D-ATIS	LAS VEGAS APP CON	LAS VEGAS TOWER	GND CON	CLNC DEL	CPDLC
132.4	125.025 379.15 (West) 119.775 282.2 (East)	118.75 257.8 (Rwy 1L/19R, 1R/19L) 119.9 257.8 (Rwy 8L/26R, 8R/26L)	121.1 270.8 E of 1R/19L 121.9 254.3 W of 1R/19L	118.0	



SW-4, 22 FEB 2024 to 21 MAR 2024

SW-4, 22 FEB 2024 to 21 MAR 2024

ELEV 2181	D TDZE 2157
-----------	--------------------



CATEGORY	A	B	C	D
RNP 0.10 DA		2544-1 $\frac{1}{8}$	387 (400-1 $\frac{1}{8}$)	
RNP 0.30 DA		2613-1 $\frac{3}{8}$	456 (500-1 $\frac{3}{8}$)	

AUTHORIZATION REQUIRED

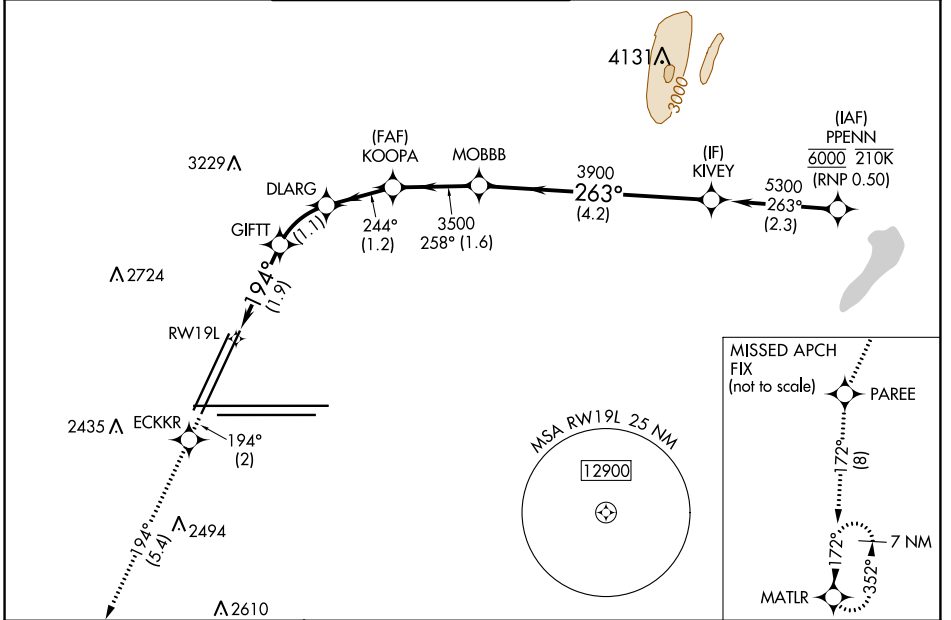
MIRL Rwy 1R-19L
 REIL Rwsy 1R, 8R, 19L and 19R
 HIRL Rwsy 1L-19R, 8L-26R and 8R-26L

APP CRS	Rwy Idg	8808
194°	TDZE	2112
	Apt Elev	2181

RNAV (RNP) Z RWY 19L

HARRY REID INTL (LAS)

RNP AR APCH. RF required.		MISSED APPROACH: Climb to 7000 on the RNAV missed approach route to MATLR and hold, continue climb-in-hold to 7000. *Missed approach requires minimum climb of 225 feet per NM to 5000.			
▼ For uncompensated Baro-VNAV systems, procedure NA below 0°C or above 54°C. Missed approach requires RNP less than 1.0.					
D-ATIS	LAS VEGAS APP CON	LAS VEGAS TOWER		GND CON	CLNC DEL
132.4	125.025 379.15 (West) 119.775 282.2 (East)	118.75 257.8 (Rwy 1L/19R, 1R/19L) 119.9 257.8 (Rwy 8L/26R, 8R/26L)	121.1 270.8 E of 1R/19L 121.9 254.3 W of 1R/19L	118.0	CPDLC



ELEV 2181	D	TDZE 2112	7000	ECKKR	PAREE	MATLR	KIVEY																									
			↑	tr 194°	tr 194°	tr 172°																										
MIRL Rwy 1R-19L REIL Rws 1R, 8R, 19L and 19R HIRL Rws 1L-19R, 8L-26R and 8R-26L		<table border="1"> <thead> <tr> <th>CATEGORY</th> <th>A</th> <th>B</th> <th>C</th> <th>D</th> </tr> </thead> <tbody> <tr> <td>RNP 0.10 DA*</td> <td></td> <td>2470-1</td> <td>358 (300-1)</td> <td></td> </tr> <tr> <td>RNP 0.20 DA*</td> <td></td> <td>2488-1</td> <td>376 (400-1)</td> <td></td> </tr> <tr> <td>RNP 0.30 DA*</td> <td></td> <td>2512-1½</td> <td>400 (400-1½)</td> <td></td> </tr> <tr> <td>RNP 0.30 DA</td> <td></td> <td>2582-1¾</td> <td>470 (500-1¾)</td> <td></td> </tr> </tbody> </table>						CATEGORY	A	B	C	D	RNP 0.10 DA*		2470-1	358 (300-1)		RNP 0.20 DA*		2488-1	376 (400-1)		RNP 0.30 DA*		2512-1½	400 (400-1½)		RNP 0.30 DA		2582-1¾	470 (500-1¾)	
CATEGORY	A	B	C	D																												
RNP 0.10 DA*		2470-1	358 (300-1)																													
RNP 0.20 DA*		2488-1	376 (400-1)																													
RNP 0.30 DA*		2512-1½	400 (400-1½)																													
RNP 0.30 DA		2582-1¾	470 (500-1¾)																													
AUTHORIZATION REQUIRED																																

SW-4, 22 FEB 2024 to 21 MAR 2024

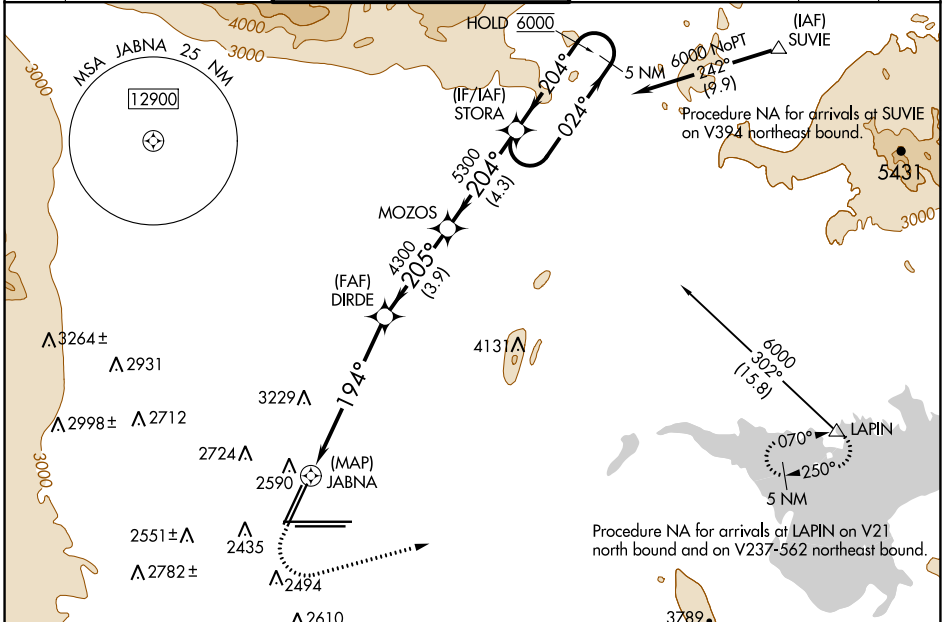
SW-4, 22 FEB 2024 to 21 MAR 2024

WAAS CH 45542 W19A	APP CRS 194°	Rwy Idg TDZE Apt Elev	8808 2112 2181
--	------------------------	-----------------------------	---

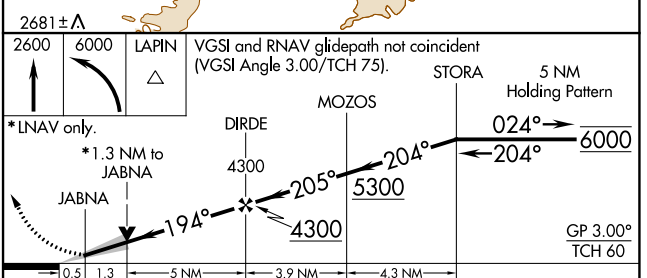
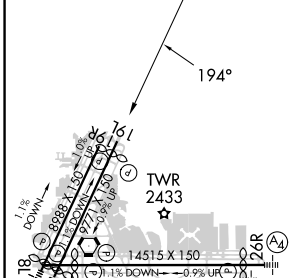
RNAV (GPS) Y RWY 19L

HARRY REID INTL (LAS)

RNP APCH.		MISSED APPROACH: Climb to 2600 then climbing left turn to 6000 direct LAPIN and hold.			
▼ For uncompensated Baro-VNAV systems, LNAV/VNAV NA below 0°C or above 54°C.					
D-ATIS 132.4	LAS VEGAS APP CON 125.025 379.15 (West) 119.775 282.2 (East)	LAS VEGAS TOWER 118.75 257.8 (Rwy 1L/19R, 1R/19L) 119.9 257.8 (Rwy 8L/26R, 8R/26L)	GND CON 121.1 270.8 E of 1R/19L 121.9 254.3 W of 1R/19L	CLNC DEL 118.0	CPDLC



ELEV 2181	D	TDZE 2112
-----------	----------	-----------



CATEGORY	A	B	C	D
LPV DA	2312-3/4		200 (200-3/4)	
LNAV/VNAV DA	2677-1 1/8		565 (500-1 1/8)	
LNAV MDA	2740-1 628 (600-1)		2740-1 3/4 628 (600-1 3/4)	
C CIRCLING	3020-1 1/4 839 (900-1 1/4)	3060-1 1/4 879 (900-1 1/4)	3100-2 3/4 919 (1000-2 3/4)	3540-3 1359 (1400-3)

MIRL Rwy 1R-19L
REIL Rwy 1R, 8R, 19L and 19R
HIRL Rwy 1L-19R, 8L-26R and 8R-26L

SW-4, 22 FEB 2024 to 21 MAR 2024

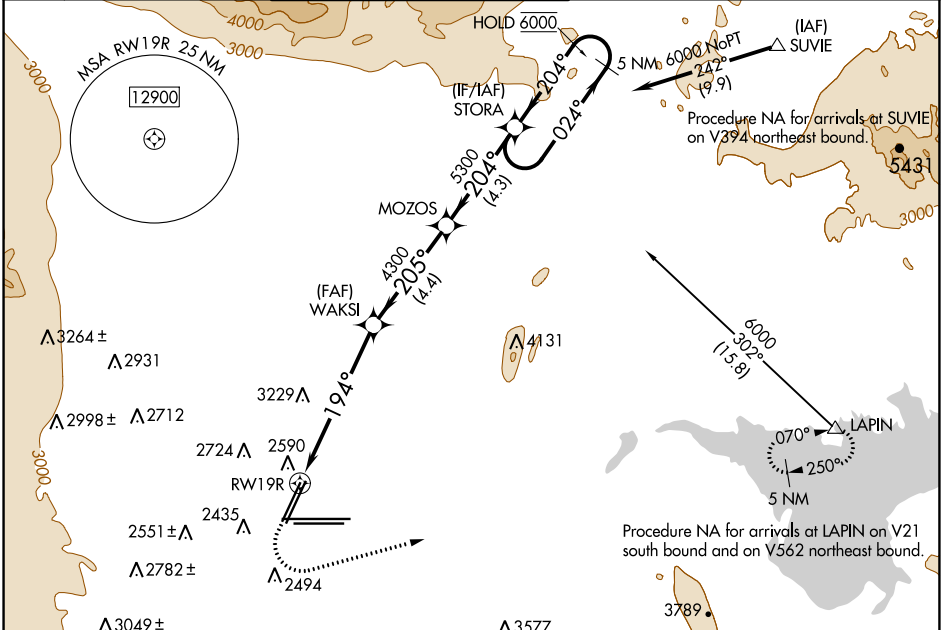
SW-4, 22 FEB 2024 to 21 MAR 2024

WAAS CH 50142 W19B	APP CRS 194°	Rwy Idg TDZE Apt Elev	8417 2117 2181
--	------------------------	-----------------------------	---

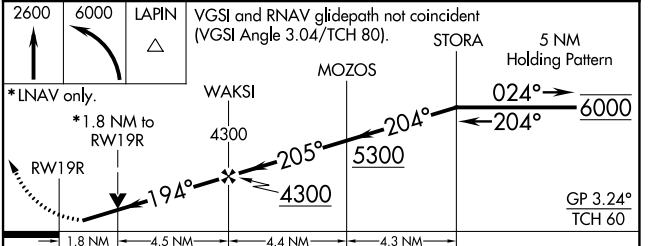
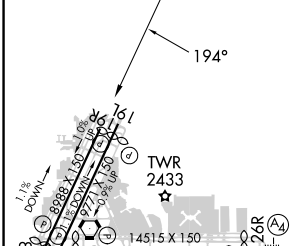
RNAV (GPS) Y RWY 19R

HARRY REID INTL (LAS)

RNP APCH-GPS.		MISSED APPROACH: Climb to 2600 then climbing left turn to 6000 direct LAPIN and hold.	
<p>V Rwy 19R helicopter visibility reduction below 3/4 SM NA. For uncompensated Baro-VNAV systems, LNAV/VNAV NA below 0°C or above 54°C.</p>			
D-ATIS 132.4	LAS VEGAS APP CON 125.025 379.15 (West) 119.775 282.2 (East)	LAS VEGAS TOWER 118.75 257.8 (Rwy 1L/19R, 1R/19L) 119.9 257.8 (Rwy 8L/26R, 8R/26L)	GND CON 121.1 270.8 E of 1R/19L 121.9 254.3 W of 1R/19L
			CLNC DEL 118.0
			CPDLC



ELEV 2181	D	TDZE 2117
-----------	----------	-----------



CATEGORY	A	B	C	D
LPV DA	2367-3/4		250 (200-3/4)	
LNAV/VNAV DA	2743-1 3/4		626 (600-1 3/4)	
LNAV MDA	2840-1 723 (700-1)		2840-2 723 (700-2)	
C CIRCLING	3020-1 1/4 839 (900-1 1/4)	3060-1 1/4 879 (900-1 1/4)	3100-2 3/4 919 (1000-2 3/4)	3540-3 1359 (1400-3)

MIRL Rwy 1R-19L
REIL Rwy 1R, 8R, 19L and 19R
HIRL Rwy 1L-19R, 8L-26R and 8R-26L

SW-4, 22 FEB 2024 to 21 MAR 2024

SW-4, 22 FEB 2024 to 21 MAR 2024

VORTAC LAS 116.9 Chan 116	APP CRS 262°	Rwy Idg	26L	26R
		TDZE	10526	12638
		Apt Elev	2069	2067
			2181	2181

VOR RWY 26L/R

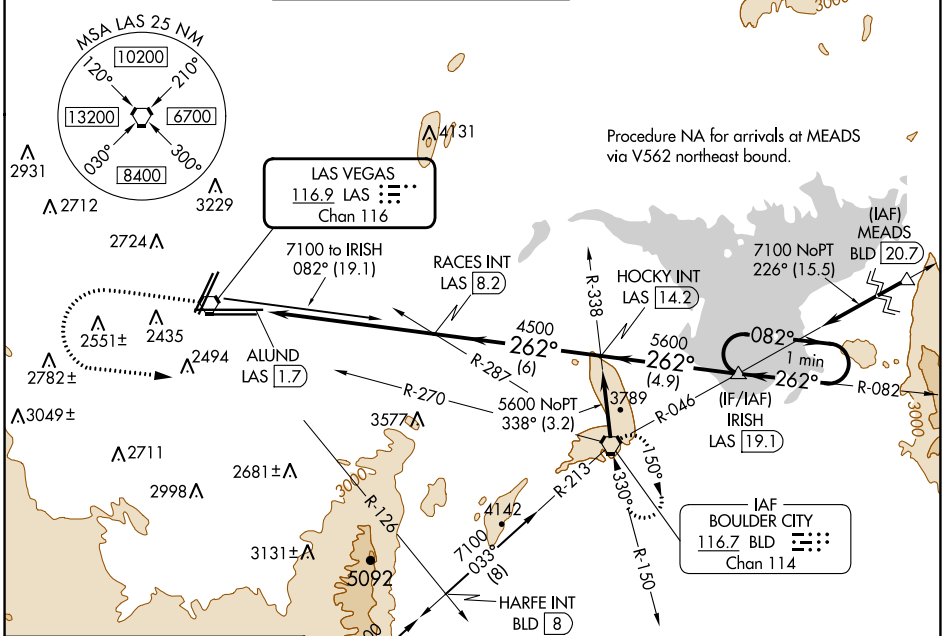
HARRY REID INTL (LAS)

⚠ For inop ALS, increase S-26L and S-26R Cat D visibility 1/4 SM.

MALSF Rwy 26L	MALS Rwy 26R

MISSED APPROACH: Climb to 4000 then climbing left turn to 6000 on heading 074° and BLD R-270 to BLD VORTAC and hold.

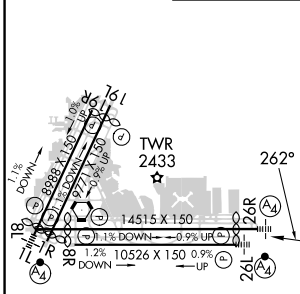
D-ATIS 132.4	LAS VEGAS APP CON 125.025 379.15 (West) 119.775 282.2 (East)	LAS VEGAS TOWER 118.75 257.8 (Rwy 1L/19R, 1R/19L) 119.9 257.8 (Rwy 8L/26R, 8R/26L)	GND CON 121.1 270.8 E of 1R/19L 121.9 254.3 W of 1R/19L	CLNC DEL 118.0	CPDLC
------------------------	--	--	---	--------------------------	-------



SW-4, 22 FEB 2024 to 21 MAR 2024

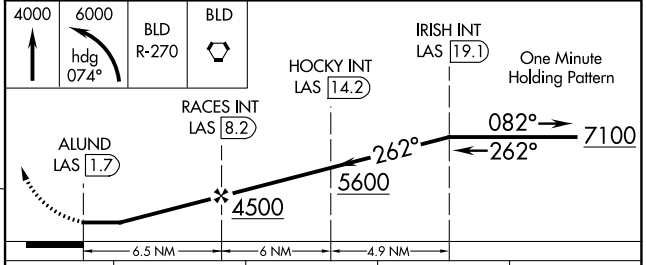
SW-4, 22 FEB 2024 to 21 MAR 2024

ELEV 2181	D TDZE 26L 2069
	TDZE 26R 2067



REIL Rwy 1R, 8R, 19L and 19R	
MIRL Rwy 1R-19L	
HIRL Rwy 1L-19R, 8L-26R and 8R-26L	
FAF to MAP 6.5 NM	
Knots	60 90 120 150 180
Min:Sec	6:30 4:20 3:15 2:36 2:10

Procedure NA for arrivals on BLD VORTAC airway radials 332° CW 916.

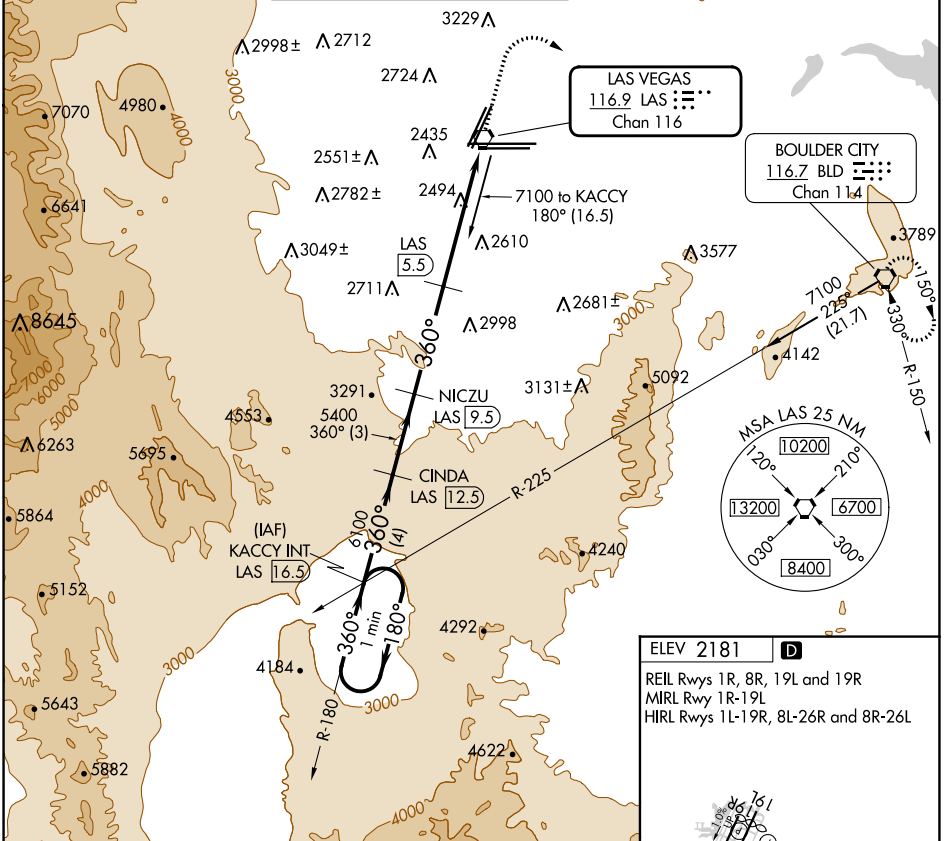


CATEGORY	A	B	C	D
S-26L	2720-3/4 651 (600-3/4)		2720-1 651 (600-1)	
S-26R	2720-3/4 653 (600-3/4)		2720-1 653 (600-1)	
C CIRCLING	3020-1 839 (900-1)	3060-1 879 (900-1)	3100-2 919 (1000-2)	3540-3 1359 (1400-3)

VORTAC LAS 116.9 Chan 116	APP CRS 360°	Rwy Idg TDZE Apt Elev	N/A N/A 2181
--	------------------------	-----------------------------	---

VOR/DME-A
HARRY REID INTL (LAS)

<p>▽ ▲</p>		<p>MISSED APPROACH: Climb to 5000 then climbing right turn to 6000 direct BLD VORTAC and hold.</p>			
D-ATIS 132.4	LAS VEGAS APP CON 125.025 379.15 (West) 119.775 282.2 (East)	LAS VEGAS TOWER 118.75 257.8 (Rwy 1L/19R, 1R/19L) 119.9 257.8 (Rwy 8L/26R, 8R/26L)	GND CON 121.1 270.8 E of 1R/19L 121.9 254.3 W of 1R/19L	CLNC DEL 118.0	CPDLC



SW-4, 22 FEB 2024 to 21 MAR 2024

SW-4, 22 FEB 2024 to 21 MAR 2024

