

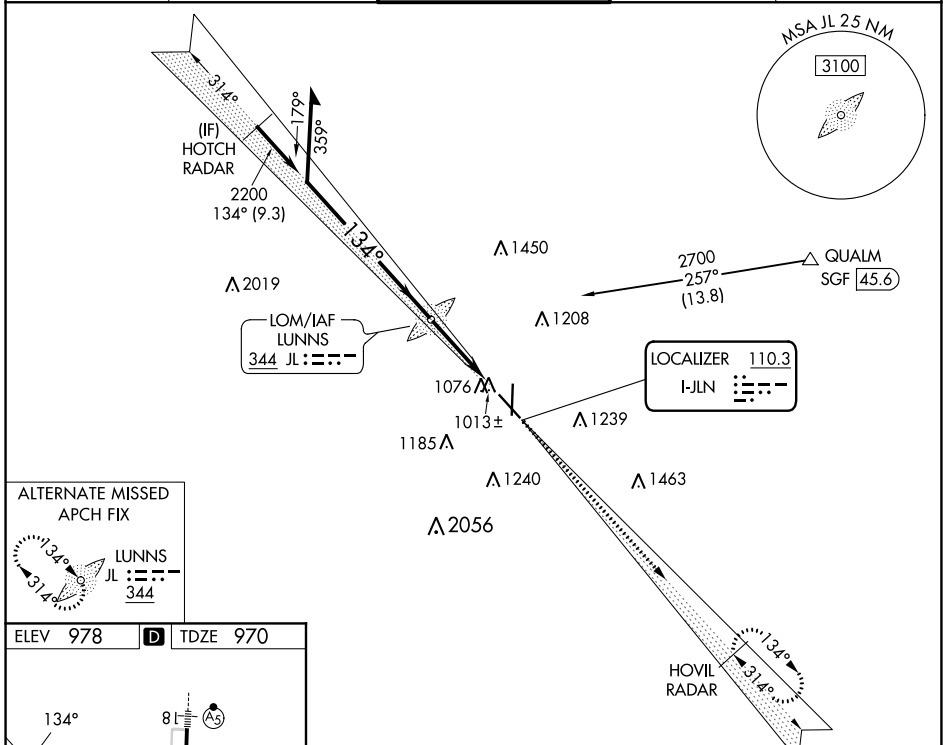
LOC I-JLN 110.3	APP CRS 134°	Rwy ldg 5813 TDZE 970 Apt Elev 978
---------------------------	------------------------	---

ILS or LOC RWY 13

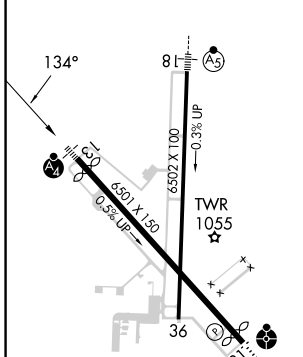
JOPLIN RGNL (JLN)

ADF required for LOC only. RADAR required.		MALSF	MISSED APPROACH: Climb to 3100 on I-JLN LOC localizer course southeast to HOVIL/RADAR and hold.	
Autopilot coupled approach NA below 1147. Inop table does not apply to S-ILS 13 all Cats. MALSF (NSTD) 1368'.				

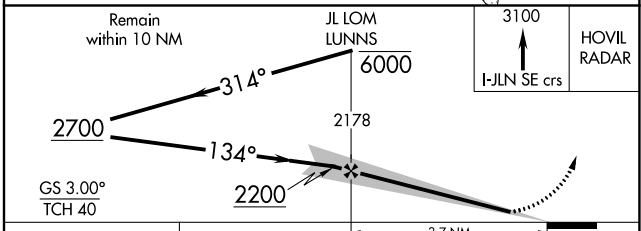
ATIS 120.85	KANSAS CITY CENTER 128.6 282.325	JOPLIN TOWER* 119.8 (CTAF) 0	GND CON 121.6	UNICOM 122.95
-----------------------	--	--	-------------------------	-------------------------



ELEV 978	D	TDZE 970
----------	----------	----------



HIRL Rwy 13-31				
HIRL Rwy 18-36				
FAF to MAP 3.7 NM				
Knots	60	90	120	150
Min:Sec	3:42	2:28	1:51	1:29



CATEGORY	A	B	C	D
S-ILS 13		1170/40	200 (200-¾)	
S-LOC 13		1300/40	330 (400-¾)	
C CIRCLING	1460-1 482 (500-1)	1500-1 522 (600-1)	1540-1½ 562 (600-1½)	1580-2 602 (700-2)

NC-3, 22 FEB 2024 to 21 MAR 2024

NC-3, 22 FEB 2024 to 21 MAR 2024


LOC/DME I-JQX 108.9 Chan 26	APP CRS 178°	Rwy Idg 6499 TDZE 965 Apt Elev 978
---	------------------------	---

ILS or LOC RWY 18

JOPLIN RGNL (JLN)

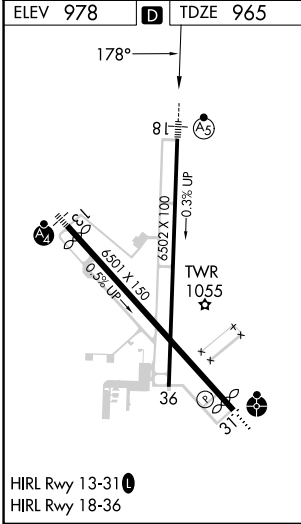
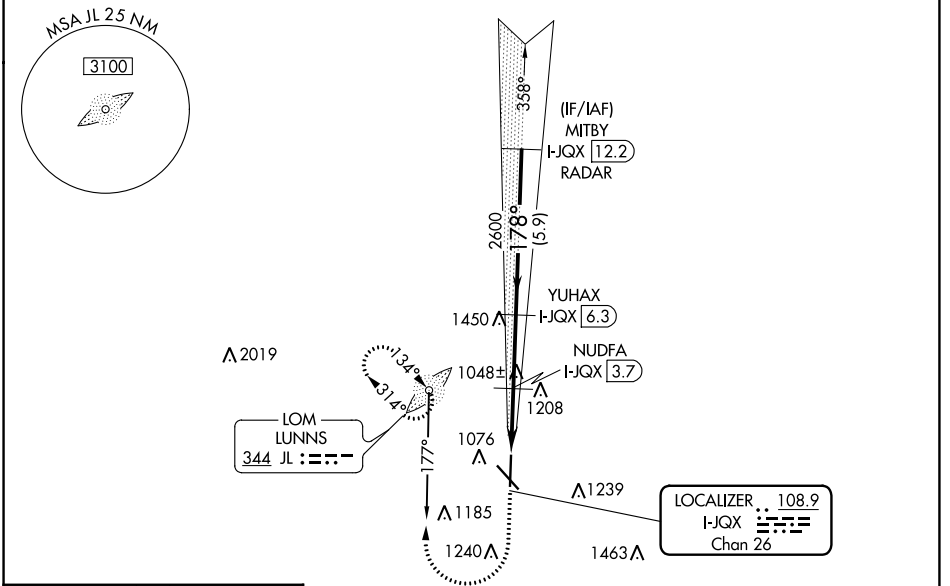
ADF required. DME required for LOC only. RADAR required for procedure entry.

⚠ For inop ALS, increase S-ILS 18# all Cats visibility to RVR 4500 and S-LOC 18 Cat C/D visibility to RVR 5500.

MALS 

MISSED APPROACH: Climb to 1460 then climbing right turn to 3100 on LUNNS LOM bearing 177° to LUNNS LOM and hold, continue climb-in-hold to 3100. S-ILS 18* missed approach requires minimum climb of 204 feet per NM to 2240. (If unable to meet climb gradient use S-ILS 18# minimums).

ATIS 120.85	KANSAS CITY CENTER 128.6 282.325	JOPLIN TOWER* 119.8 (CTAF) 0	GND CON 121.6	UNICOM 122.95
-----------------------	--	---	-------------------------	-------------------------



ELEV 978	D	TDZE 965				
1460	3100	JL	YUHAX I-JQX 6.3		MITBY I-JQX 12.2 RADAR	
1760	2600	177°	NUDFA I-JQX 3.7	2600	3100	
1.1 NM	1.3 NM	2.6 NM	5.9 NM	GS 3.00% TCH 46		
CATEGORY	A	B	C	D		
S-ILS 18*	1165/24		200 (200-1/2)			
S-ILS 18#	1240/24		275 (300-1/2)			
S-LOC 18	1340/24	375 (400-1/2)		1340/35	375 (400-5/8)	
C CIRCLING	1420-1 442 (500-1)	1480-1 502 (600-1)	1540-1 3/4 562 (600-1 3/4)	1600-2 622 (700-2)		

NC-3, 22 FEB 2024 to 21 MAR 2024

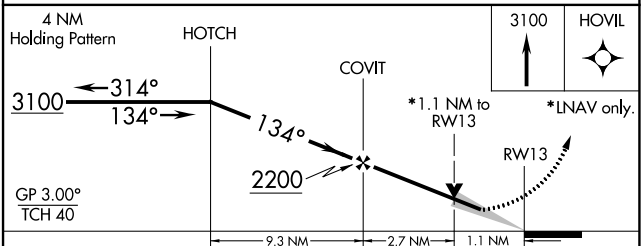
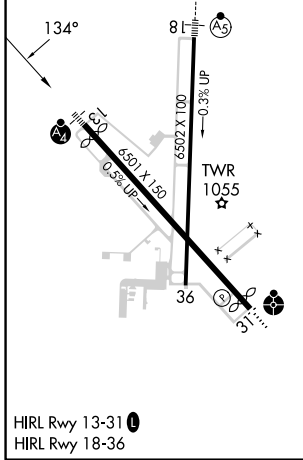
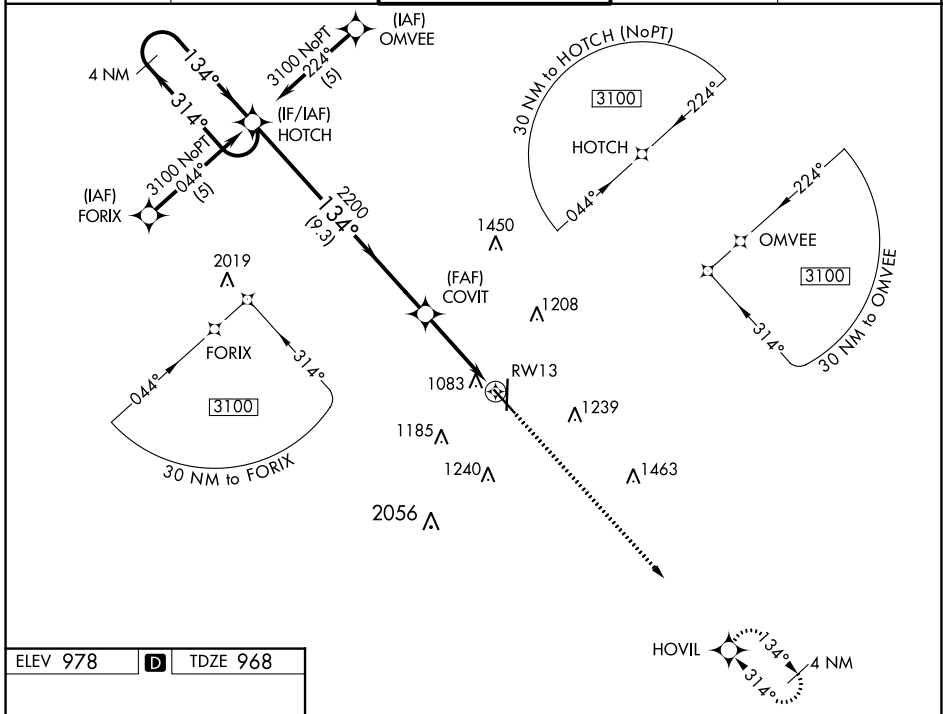
NC-3, 22 FEB 2024 to 21 MAR 2024

WAAS CH 90109 W13A	APP CRS 134°	Rwy Idg TDZE 968 Apt Elev 978	5813
--	------------------------	---	-------------

RNAV (GPS) RWY 13

JOPLIN RGNL (JLN)

RNP APCH.		MALSF	MISSED APPROACH: Climb to 3100 direct HOVIL and hold.	
MALSF (NSTD) 1368'. Baro-VNAV NA below -16°C (4°F). For inop MALSF, increase LPV Cats A/B/C visibility to 1.				
ATIS 120.85	KANSAS CITY CENTER 128.6 282.325	JOPLIN TOWER* 119.8 (CTAF) 0	GND CON 121.6	UNICOM 122.95



CATEGORY	A	B	C	D
LPV DA	1220-¾ 252 (300-¾)		1220-1 252 (300-1)	
LNAV/ VNAV DA	1380-1¼ 412 (400-1¼)		1380-1½ 412 (400-1½)	
LNAV MDA	1340-¾ 372 (400-¾)		1340-1 372 (400-1)	
C CIRCLING	1500-1½ 522 (600-1½)		1540-1½ 562 (600-1½)	

NC-3, 22 FEB 2024 to 21 MAR 2024

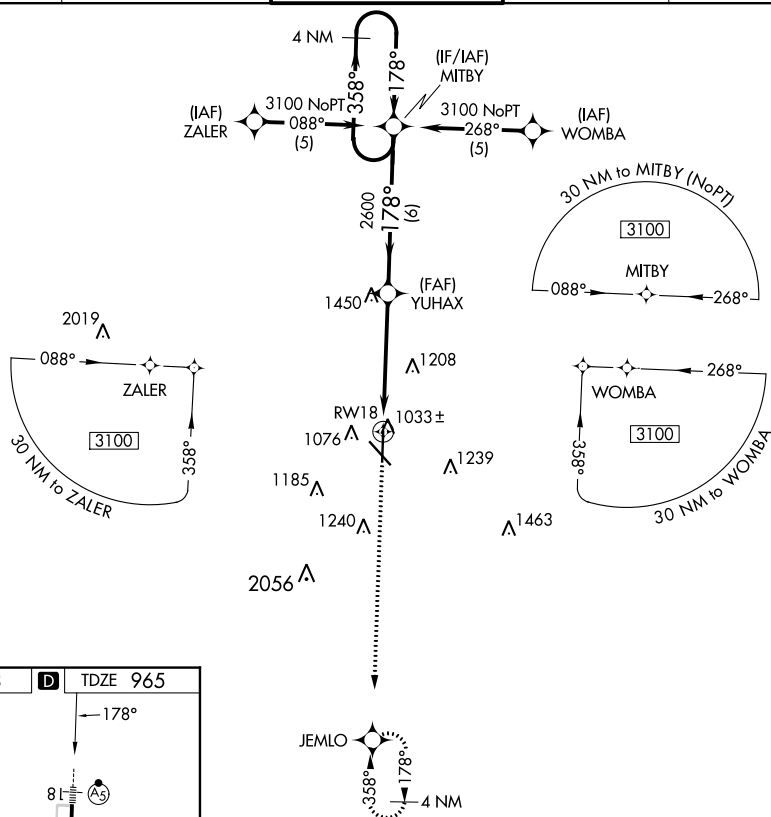
NC-3, 22 FEB 2024 to 21 MAR 2024

WAAS CH 97309 W18A	APP CRS 178°	Rwy Idg TDZE Apt Elev	6499 965 978
--	------------------------	-----------------------------	---

RNAV (GPS) RWY 18

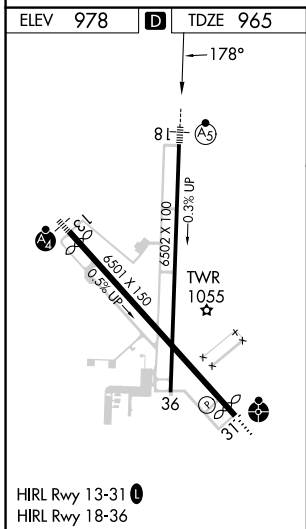
JOPLIN RGNL (JLN)

RNP APCH. ▼ For uncompensated Baro-VNAV systems, procedure NA below -16°C (4°F) or above 54°C (130°F). For inoperative MALSR, increase LPV all Cats visibility to RVR 5000.			MALSR 	MISSED APPROACH: Climb to 3100 direct JEMLO and hold.	
ATIS 120.85	KANSAS CITY CENTER 128.6 282.325	JOPLIN TOWER * 119.8 (CTAF) 0	GND CON 121.6	UNICOM 122.95	



NC-3, 22 FEB 2024 to 21 MAR 2024

NC-3, 22 FEB 2024 to 21 MAR 2024



3100	JEMLO	*LNAV only.	YUHAX	MITBY	4 NM Holding Pattern
↑	✧	*1.9 NM to RWY 18	✧	✧	3100
			✧	✧	GP 3.00° TCH 46
CATEGORY	A	B	C	D	
LPV DA		1220/24	255 (300-½)		
LNAV/VNAV DA		1460/60	495 (500-1¼)		
LNAV MDA	1600/24	635 (700-½)	1600/60 635 (700-1¼)	1600-1½ 635 (700-1½)	
CIRCLING		1600-1¾	622 (700-1¾)		1600-2 622 (700-2)

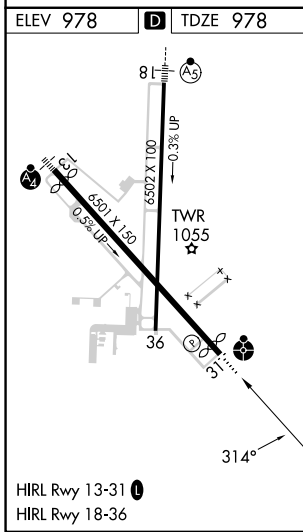
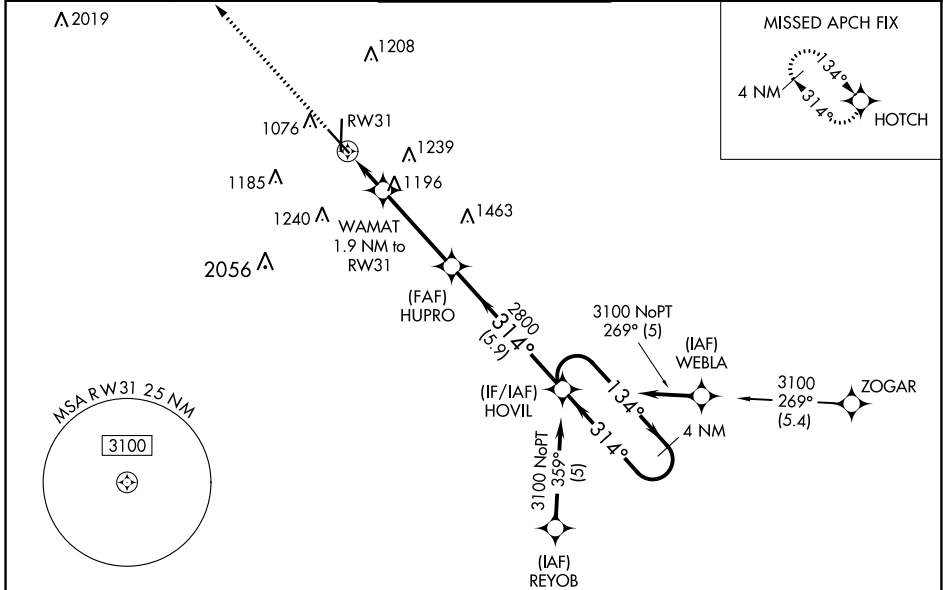
WAAS CH 69334 W31A	APP CRS 314°	Rwy Idg TDZE Apt Elev	5813 978 978
--	------------------------	-----------------------------	---

RNAV (GPS) RWY 31

JOPLIN RGNL (JLN)

RNP APCH-GPS.		ODALS ⦿ ⋮	MISSED APPROACH: Climb to 3100 direct HOTCH and hold.
<p>⚠ For uncompensated Baro-VNAV systems, LNAV/VNAV NA below -16°C or above 54°C. Inoperative table does not apply. Rwy 31 helicopter visibility reduction below 3/4 SM NA.</p>			

ATIS 120.85	KANSAS CITY CENTER 128.6 282.325	JOPLIN TOWER* 119.8 (CTAF) 0	GND CON 121.6	UNICOM 122.95
-----------------------	--	--	-------------------------	-------------------------



ELEV 978	D TDZE 978			
<p>3100 HOTCH</p> <p>* LNAV only.</p> <p>WAMAT 1.9 NM to RW31</p> <p>HUPRO 2800</p> <p>HOVIL 4 NM Holding Pattern</p> <p>3100</p> <p>GP 3.00° TCH 47</p> <p>1.9 NM 3.7 NM 5.9 NM</p>				
CATEGORY	A	B	C	D
LPV DA	1229-3/4		251 (300-3/4)	
LNAV/VNAV DA	1357-1 1/4		379 (400-1 1/4)	
LNAV MDA	1500-1	522 (600-1)	1500-1 1/2	522 (600-1 1/2)
C CIRCLING	1500-1	522 (600-1)	1540-1 1/2 562 (600-1 1/2)	1600-2 622 (700-2)

NC-3, 22 FEB 2024 to 21 MAR 2024

NC-3, 22 FEB 2024 to 21 MAR 2024

