

WAAS CH 70630 W30A	APP CRS 293°	Rwy Idg TDZE Apt Elev	4300 918 918
----------------------------------------	------------------------	-----------------------------	-----------------------------------------

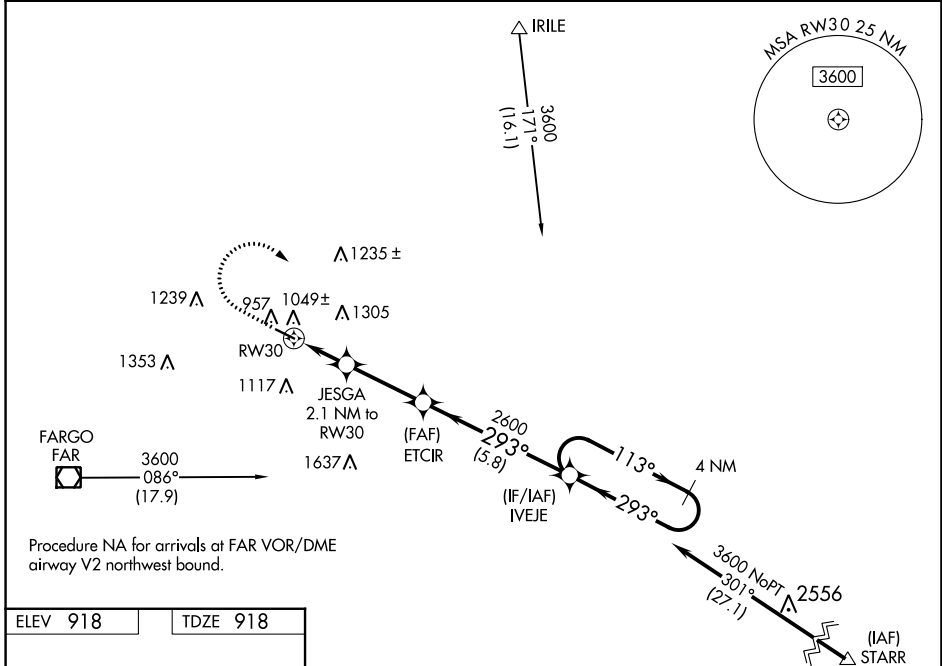
RNAV (GPS) RWY 30

MOORHEAD MUNI/FLORENCE KLINGENSMITH FLD (JKJ)

⚠ For uncompensated Baro-VNAV systems, LNAV/VNAV NA below -16°C (4°F) or above 54°C (130°F). DME/DME RNP-0.3 NA. When local altimeter setting not received, use Hector Intl altimeter setting and increase all DA 21 feet, increase all MDA 40 feet.

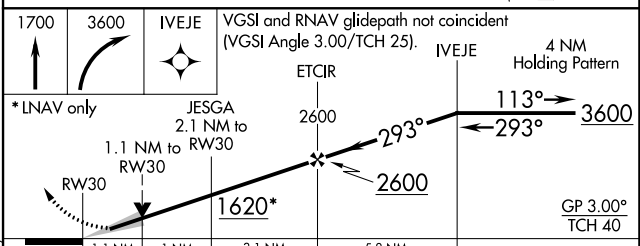
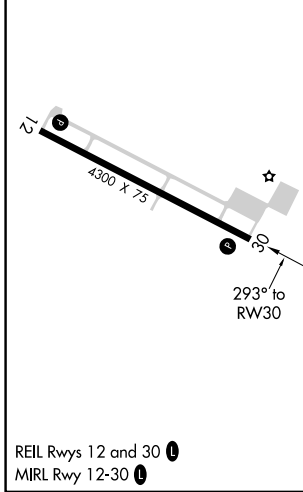
MISSED APPROACH: Climb to 1700 then climbing right turn to 3600 direct IVEJE and hold.

AWOS-3 120.0	FARGO APP CON 120.4 377.15	GCO 121.725	UNICOM 123.0 (CTAF) 📻
------------------------	--------------------------------------	-----------------------	----------------------------------------



Procedure NA for arrivals at FAR VOR/DME airway V2 northwest bound.

ELEV 918	TDZE 918
----------	----------



CATEGORY	A	B	C	D
LPV DA	1168-1	250 (300-1)		NA
LNAV/VNAV DA	1211-1	293 (300-1)		NA
LNAV MDA	1300-1	382 (400-1)		NA
CIRCLING	1360-1 442 (500-1)	1380-1 462 (500-1)		NA

NC-1, 01 DEC 2022 to 29 DEC 2022

NC-1, 01 DEC 2022 to 29 DEC 2022

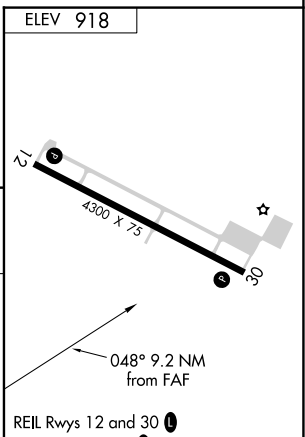
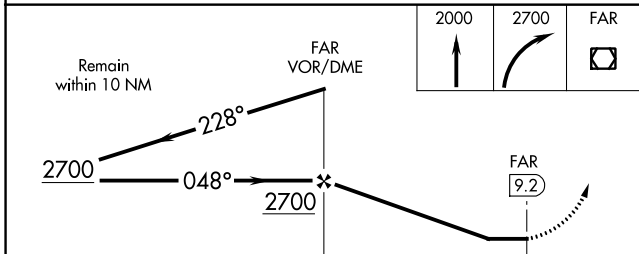
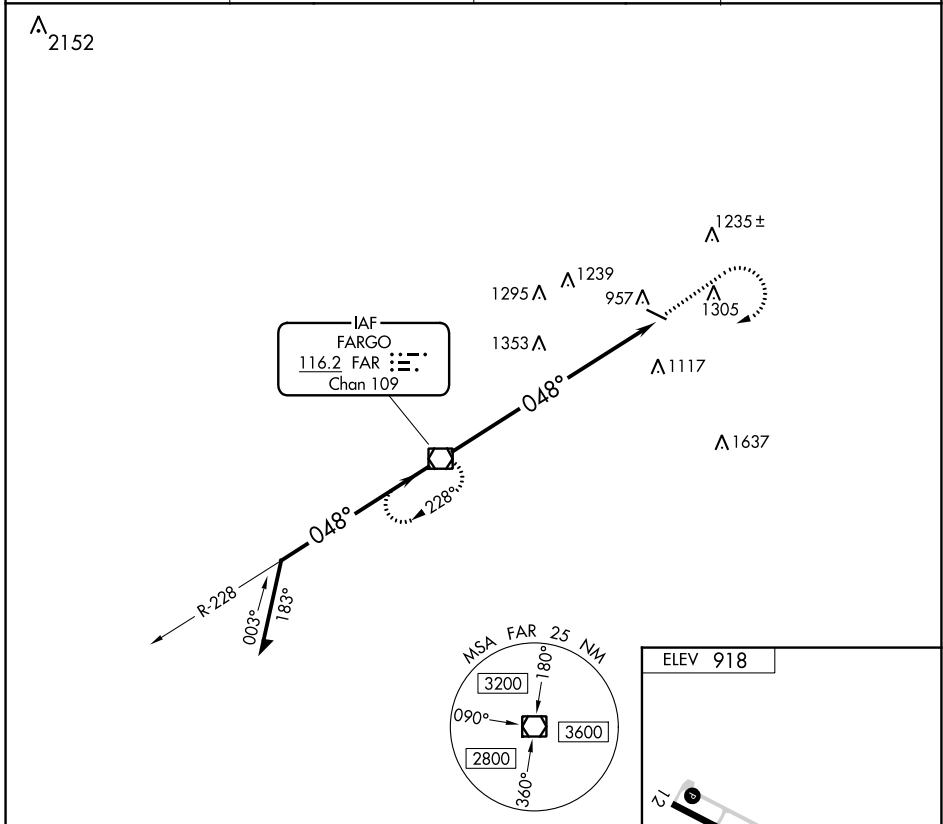
VOR/DME FAR 116.2 Chan 109	APP CRS 048°	Rwy Idg TDZE Apt Elev 918	N/A N/A 918
------------------------------------------------	------------------------	-------------------------------------------	----------------------------------------

VOR-A

MOORHEAD MUNI/FLORENCE KLINGENSMITH FLD (JKJ)

⚠ MISSED APPROACH: Climb to 2000 then climbing right turn to 2700 direct FAR VOR/DME and hold.

AWOS-3 120.0	FARGO APP CON 120.4 377.15	GCO 121.725	UNICOM 123.0 (CTAF) 📞
------------------------	--------------------------------------	-----------------------	----------------------------------------



CATEGORY	A	B	C	D	FAF to MAP 9.2 NM					
CIRCLING	1740-1¼	822 (900-1¼)	NA		Knots	60	90	120	150	180
					Min:Sec	9:12	6:08	4:36	3:41	3:04

VOR-A

NC-1, 01 DEC 2022 to 29 DEC 2022

NC-1, 01 DEC 2022 to 29 DEC 2022