

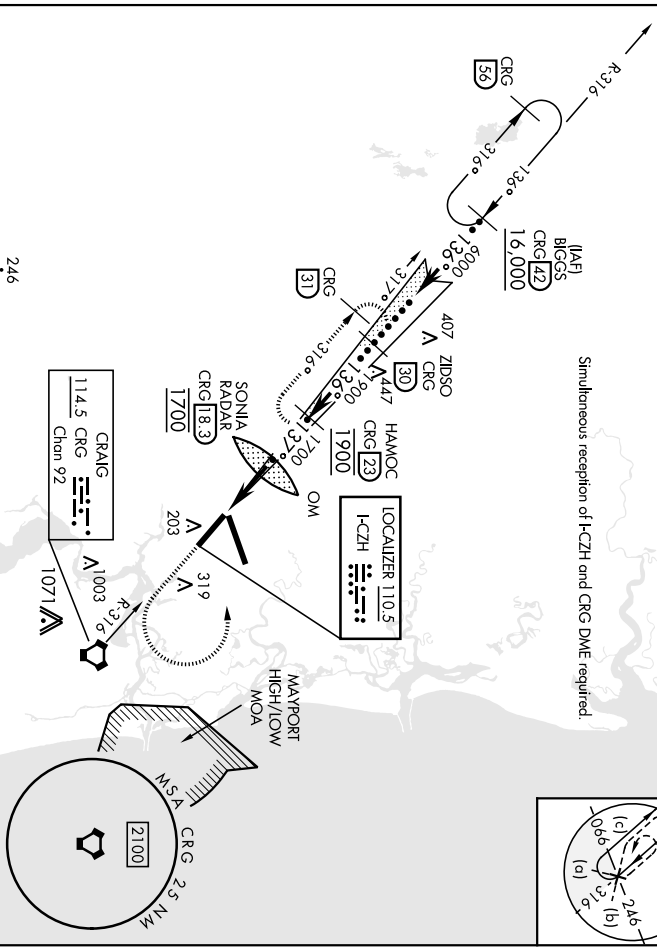
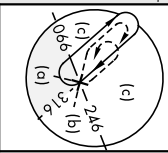
HILLS Z or LOC Z RWY 14

[USA#]

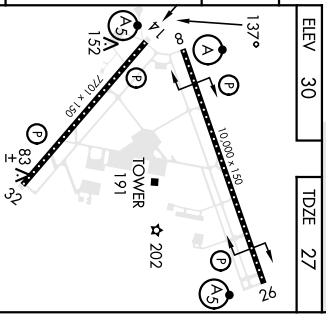
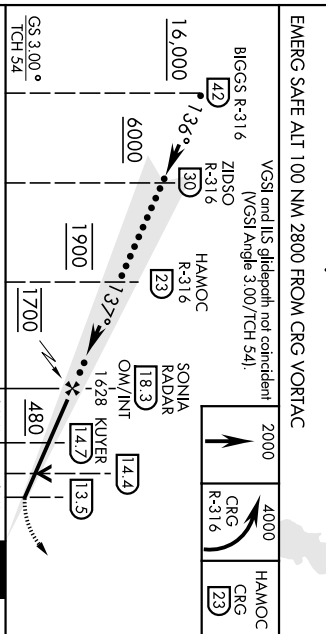
JACKSONVILLE INTL (KJAX)

LOC I-CZH 110.5	APCH CRS 137°	Rwy Idg 7701	TDZE 27	Appt Elev 30
DME required: RADAR required for procedure entry.				
▼ ** When ALS Inop, increase vis to ¾ mile. ** * When ALS Inop, increase vis to 1 mile.				
ATIS 125.85	APP CON 119.0 269.9	TOWER 118.3 317.7	GND CON 121.9 348.6	CLNC DEL 119.5 290.275

Rwy 14 helicopter visibility reduction below ¾ mile NA.
Autopilot coupled approach NA below 750.



EMERG SAFE ALT 100 NM 2800 FROM CRG VORTAC

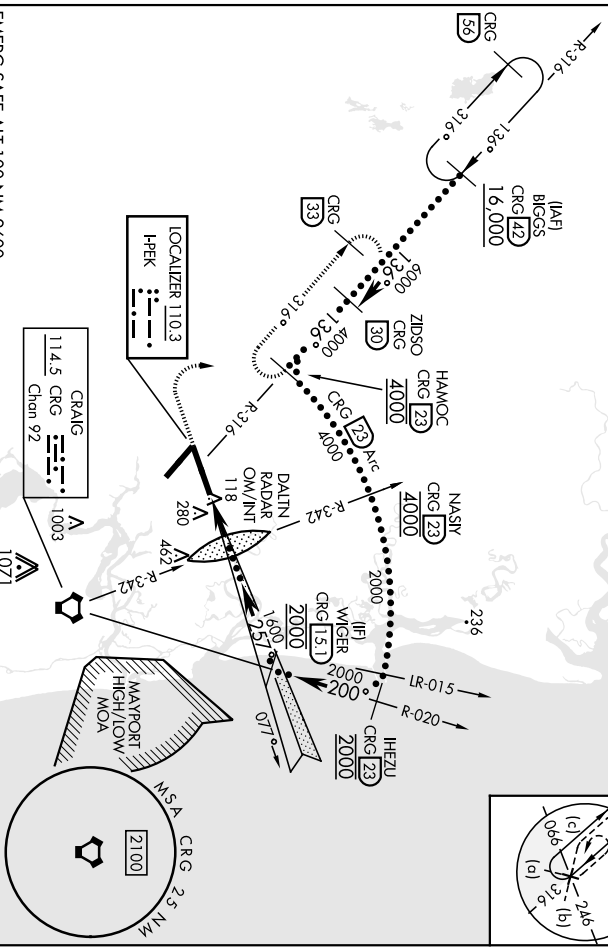
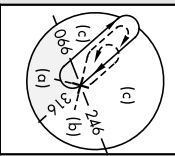


CATEGORY	C	D	E
S-ILS 1.4 *	227-1/2	200 [200-1/2]	
S-LOC 1.4 **	380-3/4	353 [400-3/4]	
◻ CIRCLING	580-1 1/2 [550 (600-1 1/2)]	640-2 [700-2]	730 [800-2 1/2]

REIL Rwy 32	120	140	160	180	200
HIRL Rwy 8-26, 14-32	2-24	2-03	1-48	1-36	1-26
TDZL/CL Rwy 8-26, 14	FAF to MAP 4.8 NM				

JACKSONVILLE, FLORIDA
 30° 30' N-81° 41' W
 JACKSONVILLE INTL (KJAX)
 Amdt 38 25JAN24

LOCLPFK 110.3	APCH CRS 257°	Rwy Idg TDZE Appt Elev 27 30	[USA#]	MALS# R-316 R-316 R-316	MISSED APPROACH: Climb to 1200 then climbing right turn to 4000 on heading 360° and CRG R-316 to HAMOC 23 DME end hold, continue climb-in-hold to 4000.
DME required. RADAR required for procedure entry. ** When ALS inop, increase CAT EPR to 40' vis to 3/4 mile. ** When ALS inop, increase vis to 1 3/8 miles. *** When ALS inop, increase RVR to 55, vis to 1 mile.		TOWER 118.3 317.7		GND CON 121.9 348.6	CINC DEL 119.5 290.275
A/TIS 125.85		APP CON 119.0 269.9			



EMERG SAFE ALT 100 NM 2600

1200	4000	CRG hdg 360°	R-316	HAMOC CRG [23]	DALTN R-342 OM/INT CRG [5.1]	WGGER Impp Lczt R-320 CRG [5.1]	ELEV 30	TDZE 27	
VGS1 and ILS glidepath not coincident. (VGS1 angle 3.00/TCH 70).							ZERRI INT R-328 RADAR	GS 3.00°	
CATEGORY C							1.2 NM	3.0 NM	
S-LOC 26**	227/18	200	(200-1/2)	D	E				
S-LOC 26**	480/45	453	(500-3/8)						
CRCLING	580-1 1/2	580-2	760-2 1/2						
	550 (600-1 1/2)	550 (600-2)	730 (800-2 1/2)						
ZERRI FIX MINIMUMS (DUAL VOR RECEIVERS REQUIRED)									
S-LOC 26***	400/35	373	(400-3/8)						
	580-1 1/2	580-2	760-2 1/2						
	550 (600-1 1/2)	550 (600-2)	730 (800-2 1/2)						
CRCLING	580-1 1/2	580-2	760-2 1/2						
	550 (600-1 1/2)	550 (600-2)	730 (800-2 1/2)						
ZERRI FIX MINIMUMS (DUAL VOR RECEIVERS REQUIRED)									
S-LOC 26***	400/35	373	(400-3/8)						
	580-1 1/2	580-2	760-2 1/2						
	550 (600-1 1/2)	550 (600-2)	730 (800-2 1/2)						
ZERRI FIX MINIMUMS (DUAL VOR RECEIVERS REQUIRED)									
CRCLING	580-1 1/2	580-2	760-2 1/2						
	550 (600-1 1/2)	550 (600-2)	730 (800-2 1/2)						
ZERRI FIX MINIMUMS (DUAL VOR RECEIVERS REQUIRED)									
S-LOC 26***	400/35	373	(400-3/8)						
	580-1 1/2	580-2	760-2 1/2						
	550 (600-1 1/2)	550 (600-2)	730 (800-2 1/2)						
ZERRI FIX MINIMUMS (DUAL VOR RECEIVERS REQUIRED)									
CRCLING	580-1 1/2	580-2	760-2 1/2						
	550 (600-1 1/2)	550 (600-2)	730 (800-2 1/2)						
ZERRI FIX MINIMUMS (DUAL VOR RECEIVERS REQUIRED)									
S-LOC 26***	400/35	373	(400-3/8)						
	580-1 1/2	580-2	760-2 1/2						
	550 (600-1 1/2)	550 (600-2)	730 (800-2 1/2)						
ZERRI FIX MINIMUMS (DUAL VOR RECEIVERS REQUIRED)									
CRCLING	580-1 1/2	580-2	760-2 1/2						
	550 (600-1 1/2)	550 (600-2)	730 (800-2 1/2)						
ZERRI FIX MINIMUMS (DUAL VOR RECEIVERS REQUIRED)									
S-LOC 26***	400/35	373	(400-3/8)						
	580-1 1/2	580-2	760-2 1/2						
	550 (600-1 1/2)	550 (600-2)	730 (800-2 1/2)						
ZERRI FIX MINIMUMS (DUAL VOR RECEIVERS REQUIRED)									
CRCLING	580-1 1/2	580-2	760-2 1/2						
	550 (600-1 1/2)	550 (600-2)	730 (800-2 1/2)						
ZERRI FIX MINIMUMS (DUAL VOR RECEIVERS REQUIRED)									
S-LOC 26***	400/35	373	(400-3/8)						
	580-1 1/2	580-2	760-2 1/2						
	550 (600-1 1/2)	550 (600-2)	730 (800-2 1/2)						
ZERRI FIX MINIMUMS (DUAL VOR RECEIVERS REQUIRED)									
CRCLING	580-1 1/2	580-2	760-2 1/2						
	550 (600-1 1/2)	550 (600-2)	730 (800-2 1/2)						
ZERRI FIX MINIMUMS (DUAL VOR RECEIVERS REQUIRED)									
S-LOC 26***	400/35	373	(400-3/8)						
	580-1 1/2	580-2	760-2 1/2						
	550 (600-1 1/2)	550 (600-2)	730 (800-2 1/2)						
ZERRI FIX MINIMUMS (DUAL VOR RECEIVERS REQUIRED)									
CRCLING	580-1 1/2	580-2	760-2 1/2						
	550 (600-1 1/2)	550 (600-2)	730 (800-2 1/2)						
ZERRI FIX MINIMUMS (DUAL VOR RECEIVERS REQUIRED)									
S-LOC 26***	400/35	373	(400-3/8)						
	580-1 1/2	580-2	760-2 1/2						
	550 (600-1 1/2)	550 (600-2)	730 (800-2 1/2)						
ZERRI FIX MINIMUMS (DUAL VOR RECEIVERS REQUIRED)									
CRCLING	580-1 1/2	580-2	760-2 1/2						
	550 (600-1 1/2)	550 (600-2)	730 (800-2 1/2)						
ZERRI FIX MINIMUMS (DUAL VOR RECEIVERS REQUIRED)									
S-LOC 26***	400/35	373	(400-3/8)						
	580-1 1/2	580-2	760-2 1/2						
	550 (600-1 1/2)	550 (600-2)	730 (800-2 1/2)						
ZERRI FIX MINIMUMS (DUAL VOR RECEIVERS REQUIRED)									
CRCLING	580-1 1/2	580-2	760-2 1/2						
	550 (600-1 1/2)	550 (600-2)	730 (800-2 1/2)						
ZERRI FIX MINIMUMS (DUAL VOR RECEIVERS REQUIRED)									
S-LOC 26***	400/35	373	(400-3/8)						
	580-1 1/2	580-2	760-2 1/2						
	550 (600-1 1/2)	550 (600-2)	730 (800-2 1/2)						
ZERRI FIX MINIMUMS (DUAL VOR RECEIVERS REQUIRED)									
CRCLING	580-1 1/2	580-2	760-2 1/2						
	550 (600-1 1/2)	550 (600-2)	730 (800-2 1/2)						
ZERRI FIX MINIMUMS (DUAL VOR RECEIVERS REQUIRED)									
S-LOC 26***	400/35	373	(400-3/8)						
	580-1 1/2	580-2	760-2 1/2						
	550 (600-1 1/2)	550 (600-2)	730 (800-2 1/2)						
ZERRI FIX MINIMUMS (DUAL VOR RECEIVERS REQUIRED)									
CRCLING	580-1 1/2	580-2	760-2 1/2						
	550 (600-1 1/2)	550 (600-2)	730 (800-2 1/2)						
ZERRI FIX MINIMUMS (DUAL VOR RECEIVERS REQUIRED)									
S-LOC 26***	400/35	373	(400-3/8)						
	580-1 1/2	580-2	760-2 1/2						
	550 (600-1 1/2)	550 (600-2)	730 (800-2 1/2)						
ZERRI FIX MINIMUMS (DUAL VOR RECEIVERS REQUIRED)									
CRCLING	580-1 1/2	580-2	760-2 1/2						
	550 (600-1 1/2)	550 (600-2)	730 (800-2 1/2)						
ZERRI FIX MINIMUMS (DUAL VOR RECEIVERS REQUIRED)									
S-LOC 26***	400/35	373	(400-3/8)						
	580-1 1/2	580-2	760-2 1/2						
	550 (600-1 1/2)	550 (600-2)	730 (800-2 1/2)						
ZERRI FIX MINIMUMS (DUAL VOR RECEIVERS REQUIRED)									
CRCLING	580-1 1/2	580-2	760-2 1/2						
	550 (600-1 1/2)	550 (600-2)	730 (800-2 1/2)						
ZERRI FIX MINIMUMS (DUAL VOR RECEIVERS REQUIRED)									
S-LOC 26***	400/35	373	(400-3/8)						
	580-1 1/2	580-2	760-2 1/2						
	550 (600-1 1/2)	550 (600-2)	730 (800-2 1/2)						
ZERRI FIX MINIMUMS (DUAL VOR RECEIVERS REQUIRED)									
CRCLING	580-1 1/2	580-2	760-2 1/2						
	550 (600-1 1/2)	550 (600-2)	730 (800-2 1/2)						
ZERRI FIX MINIMUMS (DUAL VOR RECEIVERS REQUIRED)									
S-LOC 26***	400/35	373	(400-3/8)						
	580-1 1/2	580-2	760-2 1/2						
	550 (600-1 1/2)	550 (600-2)	730 (800-2 1/2)						
ZERRI FIX MINIMUMS (DUAL VOR RECEIVERS REQUIRED)									
CRCLING	580-1 1/2	580-2	760-2 1/2						
	550 (600-1 1/2)	550 (600-2)	730 (800-2 1/2)						
ZERRI FIX MINIMUMS (DUAL VOR RECEIVERS REQUIRED)									
S-LOC 26***	400/35	373	(400-3/8)						
	580-1 1/2	580-2	760-2 1/2						
	550 (600-1 1/2)	550 (600-2)	730 (800-2 1/2)						
ZERRI FIX MINIMUMS (DUAL VOR RECEIVERS REQUIRED)									
CRCLING	580-1 1/2	580-2	760-2 1/2						
	550 (600-1 1/2)	550 (600-2)	730 (800-2 1/2)						
ZERRI FIX MINIMUMS (DUAL VOR RECEIVERS REQUIRED)									
S-LOC 26***	400/35	373	(400-3/8)						
	580-1 1/2	580-2	760-2 1/2						
	550 (600-1 1/2)	550 (600-2)	730 (800-2 1/2)						
ZERRI FIX MINIMUMS (DUAL VOR RECEIVERS REQUIRED)									
CRCLING	580-1 1/2	580-2	760-2 1/2						
	550 (600-1 1/2)	550 (600-2)	730 (800-2 1/2)						
ZERRI FIX MINIMUMS (DUAL VOR RECEIVERS REQUIRED)									
S-LOC 26***	400/35	373	(400-3/8)						
	580-1 1/2	580-2	760-2 1/2						
	550 (600-1 1/2)	550 (600-2)	730 (800-2 1/2)						
ZERRI FIX MINIMUMS (DUAL VOR RECEIVERS REQUIRED)									
CRCLING	580-1 1/2	580-2	760-2 1/2						
	550 (600-1 1/2)	550 (600-2)	730 (800-2 1/2)						
ZERRI FIX MINIMUMS (DUAL VOR RECEIVERS REQUIRED)									
S-LOC 26***	400/35	373	(400-3/8)						
	580-1 1/2	580-2	760-2 1/2						
	550 (600-1 1/2)	550 (600-2)	730 (800-2 1/2)						
ZERRI FIX MINIMUMS (DUAL VOR RECEIVERS REQUIRED)									
CRCLING	580-1 1/2	580-2	760-2 1/2						
	550 (600-1 1/2)	550 (600-2)	730 (800-2 1/2)						
ZERRI FIX MINIMUMS (DUAL VOR RECEIVERS REQUIRED)									
S-LOC 26***	400/35	373	(400-3/8)						
	580-1 1/2	580-2	760-2 1/2						
	550 (600-1 1/2)	550 (600-2)	730 (800-2 1/2)						
ZERRI FIX MINIMUMS (DUAL VOR RECEIVERS REQUIRED)									
CRCLING	580-1 1/2	580-2	760-2 1/2						
	550 (600-1 1/2)	550 (600-2)	730 (800-2 1/2)						
ZERRI FIX MINIMUMS (DUAL VOR RECEIVERS REQUIRED)									
S-LOC 26***	400/35	373	(400-3/8)						
	580-1 1/2	580-2	760-2 1/2						
	550 (600-1 1/2)	550 (600-2)	730 (800-2 1/2)						
ZERRI FIX MINIMUMS (DUAL VOR RECEIVERS REQUIRED)									
CRCLING	580-1 1/2	580-2	760-2 1/2						
	550 (600-1 1/2)	550 (600-2)	730 (800-2 1/2)						
ZERRI FIX MINIMUMS (DUAL VOR RECEIVERS REQUIRED)									
S-LOC 26***	400/35	373	(400-3/8)						
	580-1 1/2	580-2	760-2 1/2						
	550 (600-1 1/2)	550 (600-2)	730 (800-2 1/2)						

[USA]

JACKSONVILLE INTL (KJAX)

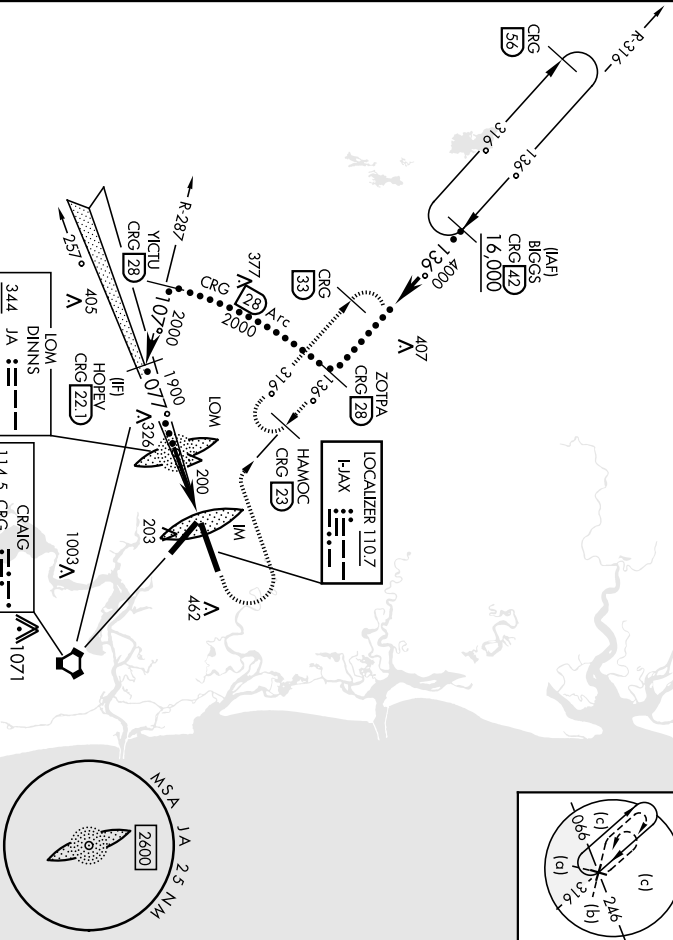
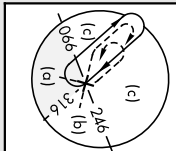
LOC I-JAX 110.7	APCH CRS 07°	Req'd Idg 10,000
	TDZE Elev 30	Appt Elev 30

DME required: RADAR required for procedure entry.
 * When ALS inop, increase CAT E RVR to 40, vis to ¼ mile.
 ** When ALS inop, increase CAT E vis to 1½ miles.

ATIS 125.85	APP CON 119.0 269.9	TOWER 118.3 317.7
-----------------------	-------------------------------	-----------------------------

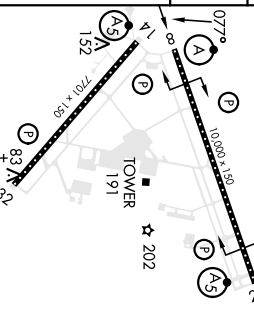
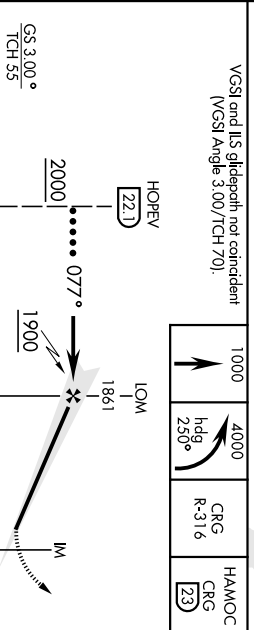
ALSF-2
 MISSED APPROACH: Climb to 1000 then climbing left turn to 4000 on heading 250° and on CRG R-316 to HAMOC/CRG 23 DME end hold, continue climb-in-hold to 4000.

GND CON 121.9 348.6	CINC DEL 119.5 290.275
-------------------------------	----------------------------------



EMERG SAFE ALT 100 NM 2600

VGSI and ILS glideslope not coincident (VGSI Angle 3.00/TCH 70).



GS 3,000° TCH 55	HOPEV 221		LOM 1861		IM				
CATEGORY	C	D	E	5.3 NM					
S-ILS 8 *	230/18	200	(200-½)	REL Rwy 32					
S-LOC 8 **	480/45	450	(500-¾)	HIRT Rwy 8-26, 14-32					
CRCLING	550 (600-1½)	550 (600-2)	730 (800-2½)	TDL/CL Rwy 8-26, 14					
				FAF to MAP 5.6 NM					
				Knots	120	140	160	180	200
				Min:Sec	2:48	2:24	2:06	1:52	1:41

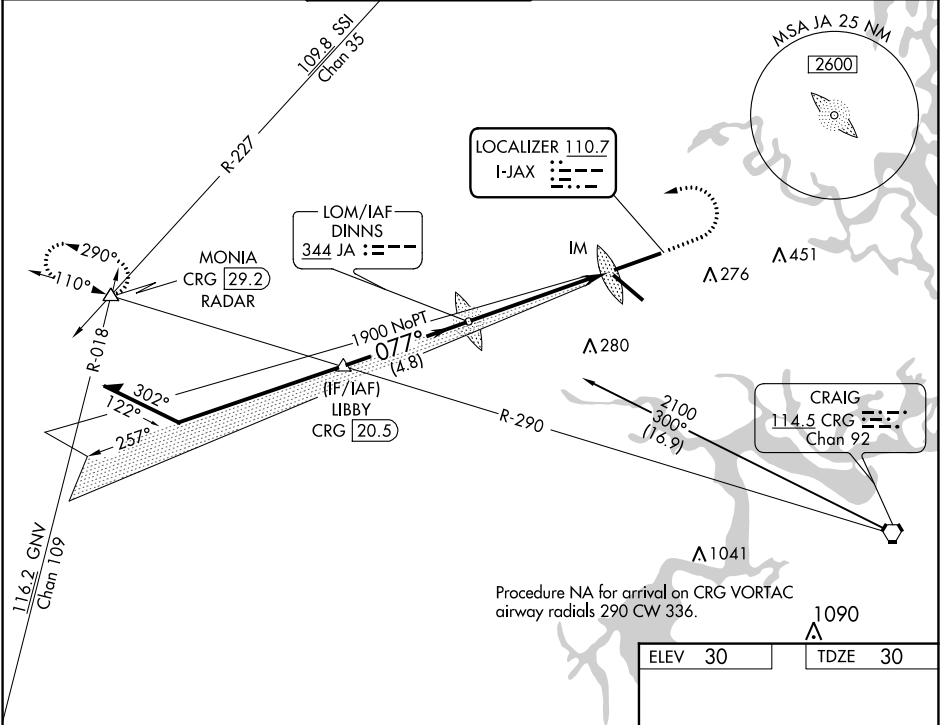
JACKSONVILLE, FLORIDA
 JACKSONVILLE INTL (KJAX)
 Arndt 6A 30NOV23
 30°30'N-81°41'W

LOC I-JAX 110.7	APP CRS 077°	Rwy ldg 10000
		TDZE 30
		Apt Elev 30

ILS Y RWY 8 (CAT II & III)

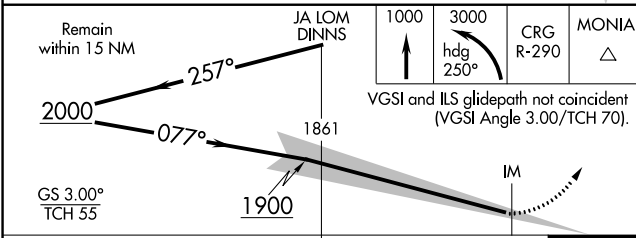
JACKSONVILLE INTL (JAX)

D-ATIS 125.85		JACKSONVILLE APP CON 119.0 269.9		JACKSONVILLE TOWER 118.3 317.7		GND CON 121.9 348.6		CLNC DEL 119.5 290.275		CPDLC	
ALSIF-2						MISSED APPROACH: Climb to 1000 then climbing left turn to 3000 on heading 250° and on CRG VORTAC R-290 to MONIA INT/CRG 29.2 DME/RADAR and hold.					

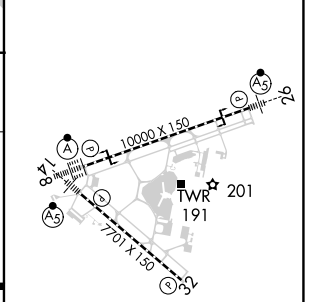


SE-3, 22 FEB 2024 to 21 MAR 2024

SE-3, 22 FEB 2024 to 21 MAR 2024



ELEV 30	TDZE 30
---------	---------



CATEGORY	A	B	C	D
S-ILS 8	CAT II RA 100/12 100 DA 130			
S-ILS 8	CAT IIIa RVR 06			

CATEGORY II & III ILS - SPECIAL AIRCREW & AIRCRAFT CERTIFICATION REQUIRED

REIL Rwy 32
TDZ/CL Rws 8, 14, and 26
HIRL Rws 8-26 and 14-32

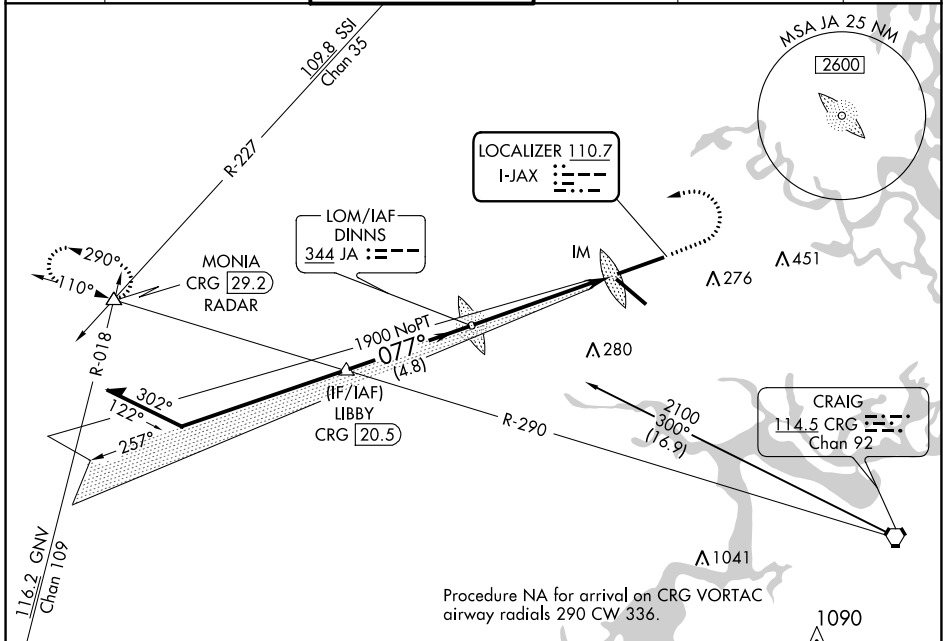
LOC I-JAX 110.7	APP CRS 077°	Rwy ldg 10000 TDZE 30 Apt Elev 30
---------------------------	------------------------	--

ILS Y RWY 8 (SA CAT I)

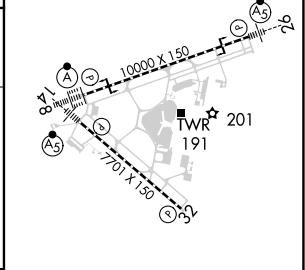
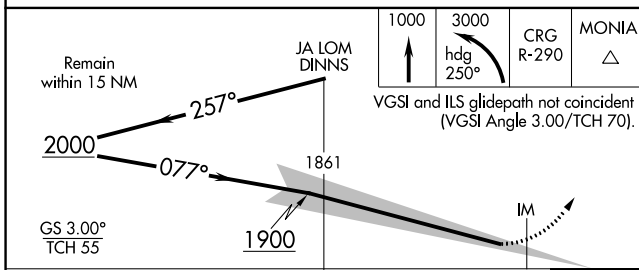
JACKSONVILLE INTL (JAX)

	Requires specific OPSPEC, MSPEC, or LOA approval.	MISSED APPROACH: Climb to 1000 then climbing left turn to 3000 on heading 250° and on CRG VORTAC R-290 to MONIA INT/CRG 29.2 DME/RADAR and hold.
--	---	--

D-ATIS 125.85	JACKSONVILLE APP CON 119.0 269.9	JACKSONVILLE TOWER 118.3 317.7	GND CON 121.9 348.6	CLNC DEL 119.5 290.275	CPDLC
-------------------------	--	--	-------------------------------	----------------------------------	-------



ELEV 30	TDZE 30
---------	---------



CATEGORY	A	B	C	D
S-ILS 8	RA 175/14 150 DA 180			

SA CATEGORY I - SPECIAL AIRCREW & AIRCRAFT CERTIFICATION REQUIRED

REIL Rwy 32
TDZ/CL Rwys 8, 14, and 26
HIRL Rwys 8-26 and 14-32

SE-3, 22 FEB 2024 to 21 MAR 2024

SE-3, 22 FEB 2024 to 21 MAR 2024

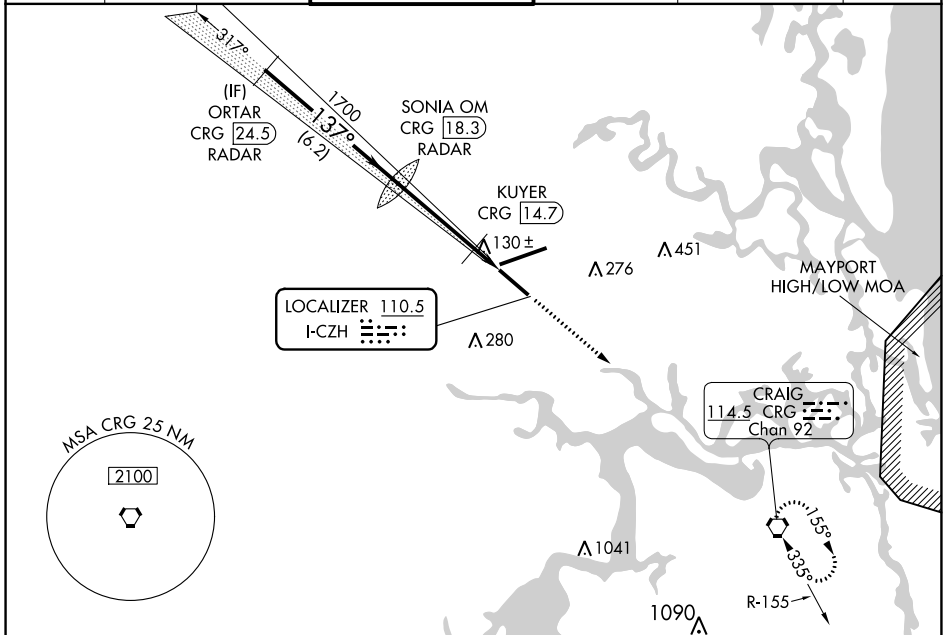
LOC I-CZH 110.5	APP CRS 137°	Rwy ldg 7701
		TDZE 27
		Apt Elev 30

ILS Y or LOC Y RWY 14

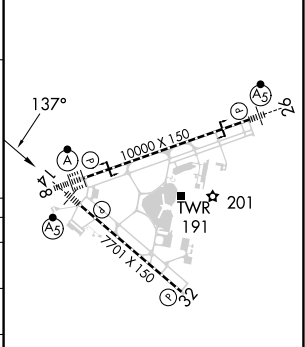
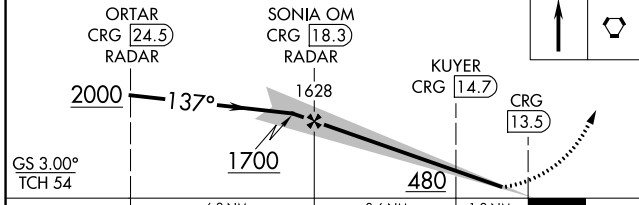
JACKSONVILLE INTL (JAX)

RADAR required for procedure entry. DME or RADAR required.		MALSR	MISSED APPROACH: Climb to 3000 direct CRG VORTAC and hold.
Autopilot coupled approach NA below 750 feet MSL. Rwy 14 helicopter visibility reduction below 3/4 SM NA. For inop ALS, increase S-LOC Cats A/B visibility to 1 SM. KUYER Fix minimums: For inop ALS, increase S-LOC 14 all Cats visibility to 1 SM.			

D-ATIS 125.85	JACKSONVILLE APP CON 119.0 269.9	JACKSONVILLE TOWER 118.3 317.7	GND CON 121.9 348.6	CLNC DEL 119.5 290.275	CPDLC
-------------------------	--	--	-------------------------------	----------------------------------	-------



VGSI and ILS glidepath not coincident (VGSI Angle 3.00/TCH 70).	3000	CRG	ELEV 30	TDZE 27
---	------	-----	---------	---------



CATEGORY	A	B	C	D
S-ILS 14	227-1/2 200 (200-1/2)			
S-LOC 14	480-3/4 453 (500-3/4)		480-7/8 453 (500-7/8)	
CIRCLING <input checked="" type="checkbox"/>	520-1 490 (500-1)		580-1 1/2 640-2 550 (600-1 1/2) 610 (700-2)	
KUYER FIX MINIMUMS (DME REQUIRED)				
S-LOC 14	380-3/4 353 (400-3/4)			
CIRCLING <input checked="" type="checkbox"/>	520-1 490 (500-1)		580-1 1/2 640-2 550 (600-1 1/2) 610 (700-2)	

REIL Rwy 32	TDZ/CL Rwys 8, 14, and 26				
	HIRL Rwys 8-26 and 14-32				
	FAF to MAP 4.8 NM				
Knots	60	90	120	150	180
Min:Sec	4:48	3:12	2:24	1:55	1:36

SE-3, 22 FEB 2024 to 21 MAR 2024

SE-3, 22 FEB 2024 to 21 MAR 2024


LOC I-PEK 110.3	APP CRS 257°	Rwy ldg 10000 TDZE 27 Apt Elev 30
---------------------------	------------------------	--

ILS Y or LOC Y RWY 26

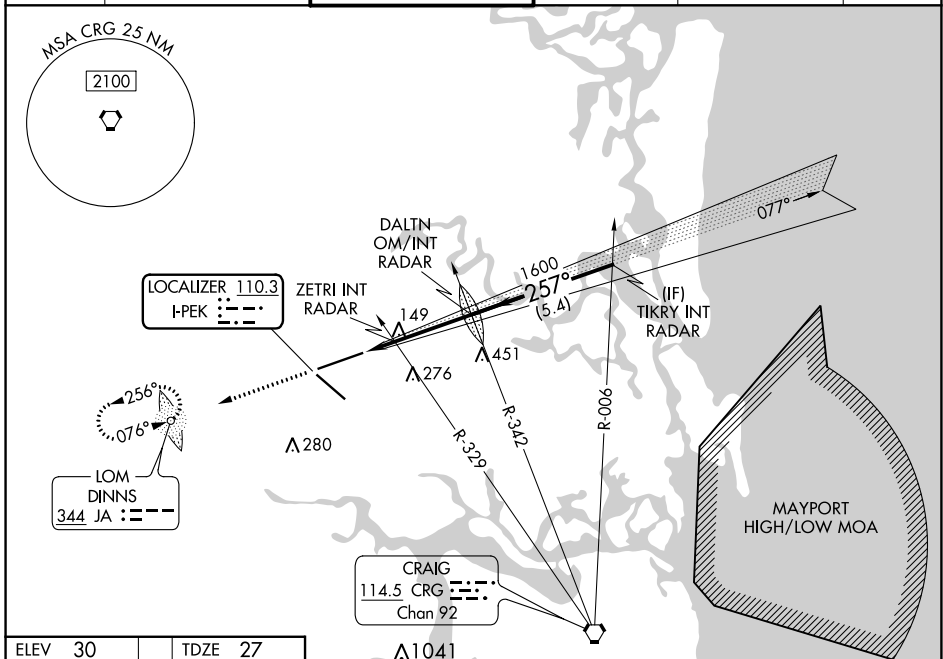
JACKSONVILLE INTL (JAX)

ADF required. RADAR required for procedure entry.

▼ For inop ALS, ZETRI Fix Minimums: increase S-LOC 26 Cats C/D visibility to RVR 5500.

MALSR  MISSED APPROACH: Climb to 3000 direct DINNS LOM and hold, continue climb-in-hold to 3000.

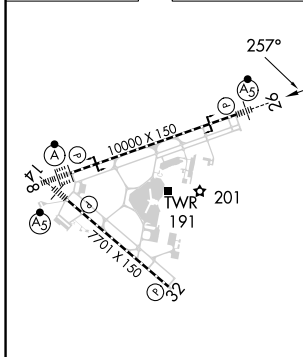
D-ATIS 125.85	JACKSONVILLE APP CON 119.0 269.9	JACKSONVILLE TOWER 118.3 317.7	GND CON 121.9 348.6	CLNC DEL 119.5 290.275	CPDLC
-------------------------	--	--	-------------------------------	----------------------------------	-------



SE-3, 22 FEB 2024 to 21 MAR 2024

SE-3, 22 FEB 2024 to 21 MAR 2024

ELEV 30	TDZE 27
---------	---------



3000	DINNS	VGSi and ILS glidepath not coincident (VGSi Angle 3.00/TCH 70).	TIKRY INT RADAR
2000			
480	1600	2000	GS 3.00° TCH 55
1.2 NM	3 NM	5.4 NM	

REIL Rwy 32
TDZ/CL Rwys 8, 14, and 26
HIRL Rwys 8-26 and 14-32

FAF to MAP 4.2 NM

Knots	60	90	120	150	180
Min:Sec	4:12	2:48	2:06	1:41	1:24

CATEGORY	A	B	C	D
S-ILS 26	227/18 200 (200-½)			
S-LOC 26	480/24	453 (500-½)	480/45	453 (500-¾)
<input checked="" type="checkbox"/> CIRCLING	520-1	490 (500-1)	580-1½	580-2
ZETRI FIX MINIMUMS (DUAL VOR RECEIVERS REQUIRED)				
S-LOC 26	400/24	373 (400-½)	400/35	373 (400-¾)
<input checked="" type="checkbox"/> CIRCLING	520-1	490 (500-1)	580-1½	580-2
			550 (600-1½)	550 (600-2)

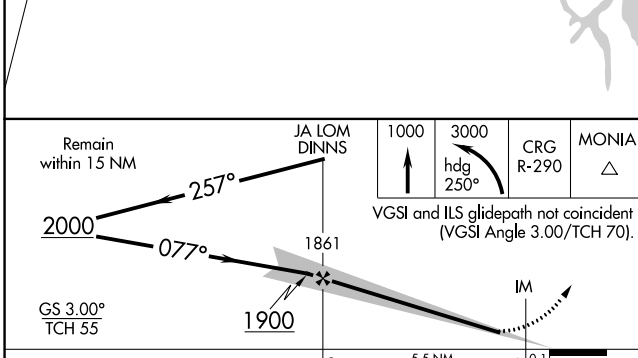
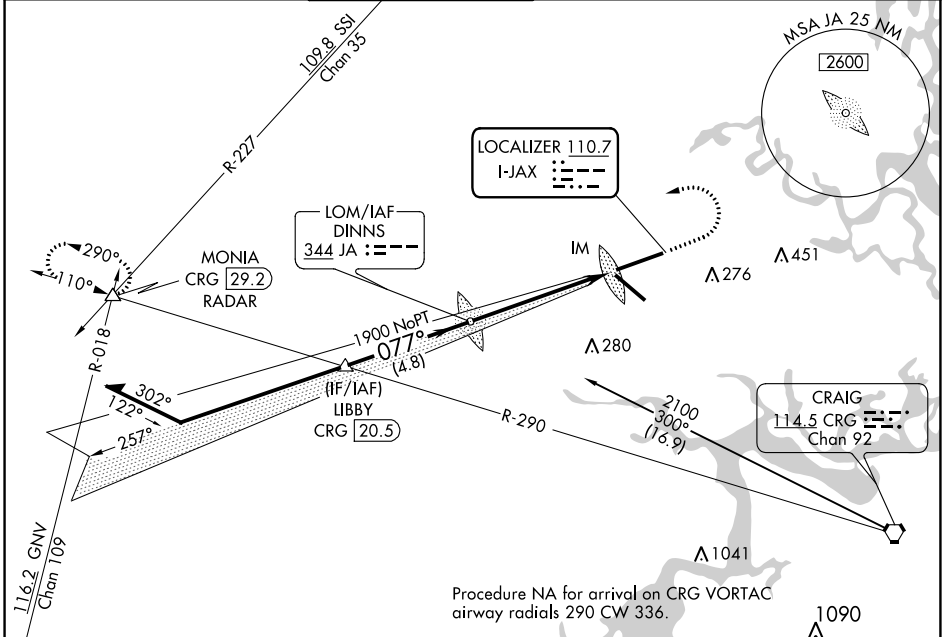
LOC I-JAX 110.7	APP CRS 077°	Rwy ldg 10000
		TDZE 30
		Apt Elev 30

ILS Y or LOC Y RWY 8

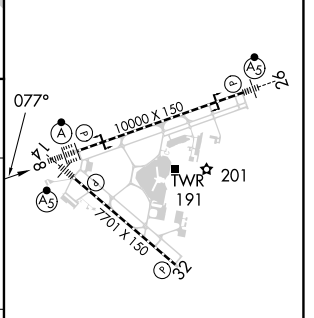
JACKSONVILLE INTL (JAX)

<p>For inop ALS, increase S-ILS 8 Cat E visibility to RVR 4000 and S-LOC 8 Cat E visibility to 1½ SM.</p>	ALS F-2	<p>MISSED APPROACH: Climb to 1000 then climbing left turn to 3000 on heading 250° and on CRG VORTAC R-290 to MONIA INT/CRG 29.2 DME/RADAR and hold.</p>

D-ATIS 125.85	JACKSONVILLE APP CON 119.0 269.9	JACKSONVILLE TOWER 118.3 317.7	GND CON 121.9 348.6	CLNC DEL 119.5 290.275	CPDLC
-------------------------	--	--	-------------------------------	----------------------------------	-------



ELEV 30	TDZE 30
---------	---------



CATEGORY	A	B	C	D	E
S-ILS 8	230/18 200 (200-½)				
S-LOC 8	480/24	450 (500-½)	480/45 450 (500-¾)		
CIRCLING	520-1	490 (500-1)	580-1½ 550 (600-1½)	580-2 550 (600-2)	760-2½ 730 (800-2½)

REIL Rwy 32	TDZ/CL Rwy 8, 14, and 26					
HIRL Rwy 8-26 and 14-32	FAF to MAP 5.6 NM					
	Knots	60	90	120	150	180
	Min:Sec	5:36	3:44	2:48	2:14	1:52

SE-3, 22 FEB 2024 to 21 MAR 2024


SE-3, 22 FEB 2024 to 21 MAR 2024

APP CRS	Rwy Idg	7701
137°	TDZE	27
	Apt Elev	29

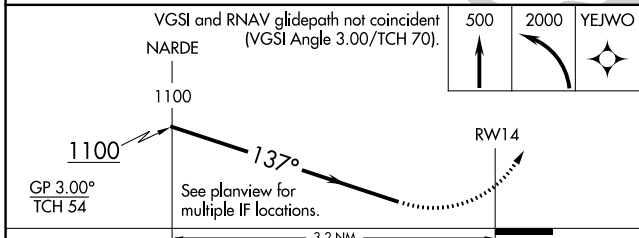
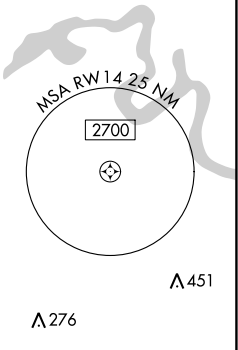
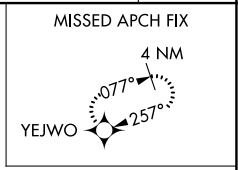
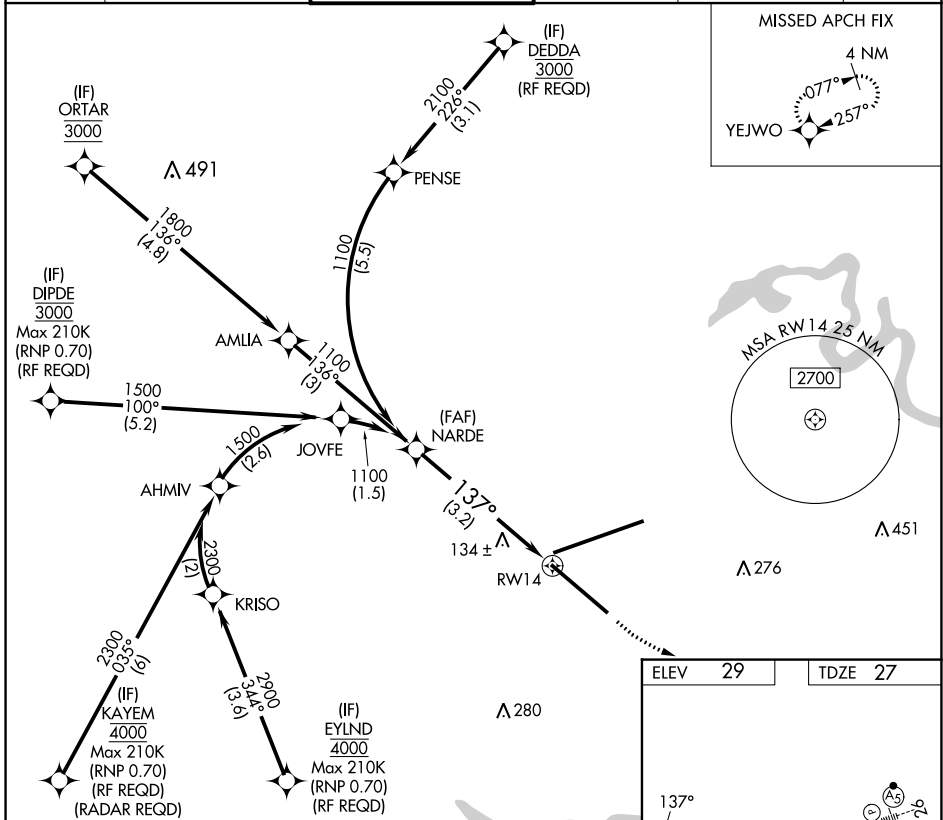
RNAV (RNP) Y RWY 14

JACKSONVILLE INTL (JAX)

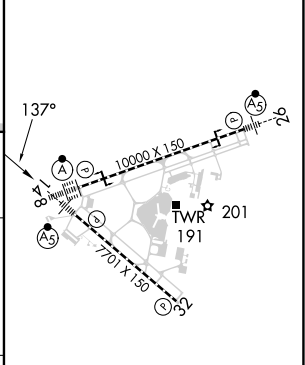
For uncompensated Baro-VNAV systems, procedure NA below -5°C (23°F) or above 54°C (130°F). GPS required. For inoperative MALSR, increase RNP 0.30 all Cats

MALSR  MISSED APPROACH: Climb to 500 then climbing left turn to 2000 direct YEJWO and hold.

D-ATIS	JACKSONVILLE APP CON	JACKSONVILLE TOWER	GND CON	CLNC DEL	CPDLC
125.85	119.0 269.9	118.3 317.7	121.9 348.6	119.5 290.275	



ELEV	29	TDZE	27
------	----	------	----



CATEGORY	A	B	C	D
RNP 0.30 DA		389-1	362 (400-1)	
AUTHORIZATION REQUIRED				

REIL Rwy 32
TDZ/CL Rwys 8, 14, and 26
HIRL Rwys 8-26 and 14-32

SE-3, 22 FEB 2024 to 21 MAR 2024

SE-3, 22 FEB 2024 to 21 MAR 2024

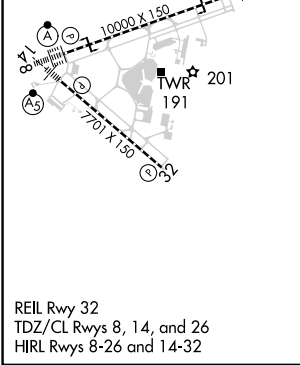
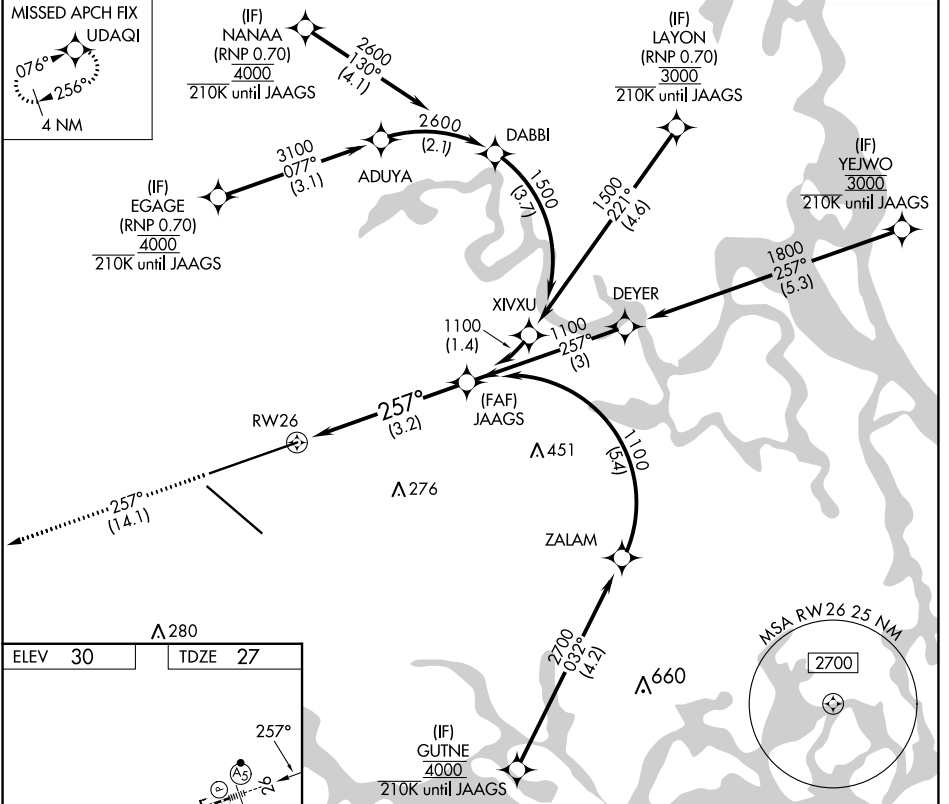
RNAV (RNP) Y RWY 26

JACKSONVILLE INTL (JAX)

APP CRS	Rwy Idg	10000
257°	TDZE	27
	Apt Elev	30

RNP AR APCH-GPS.	MALSR	MISSED APPROACH: Climb to 2000 on track 257° to UDAQI and hold.
For uncompensated Baro-VNAV systems, procedure NA below -5°C or above 54°C.		

D-ATIS	JACKSONVILLE APP CON	JACKSONVILLE TOWER	GND CON	CLNC DEL	CPDLC
125.85	119.0 269.9	118.3 317.7	121.9 348.6	119.5 290.275	



ELEV 30	TDZE 27	2000 UDAQI		VGSi and RNAV glidepath not coincident (VGSi Angle 3.00/TCH 70).	
		See planview for multiple IF locations.			
		JAAGS 1100		1100	
				GP 3.00° TCH 49	
		3.2 NM			
CATEGORY	A	B	C	D	
RNP 0.30 DA	419/35		392 (400-5%)		
AUTHORIZATION REQUIRED					


SE-3, 22 FEB 2024 to 21 MAR 2024

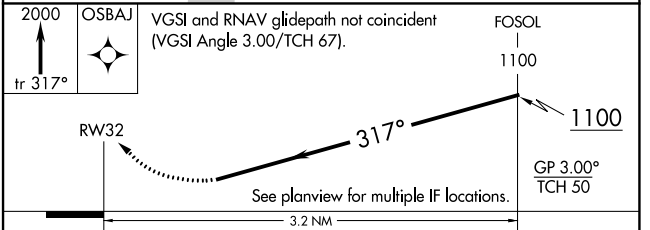
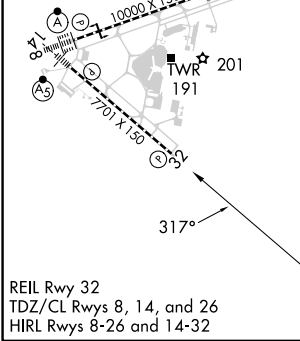
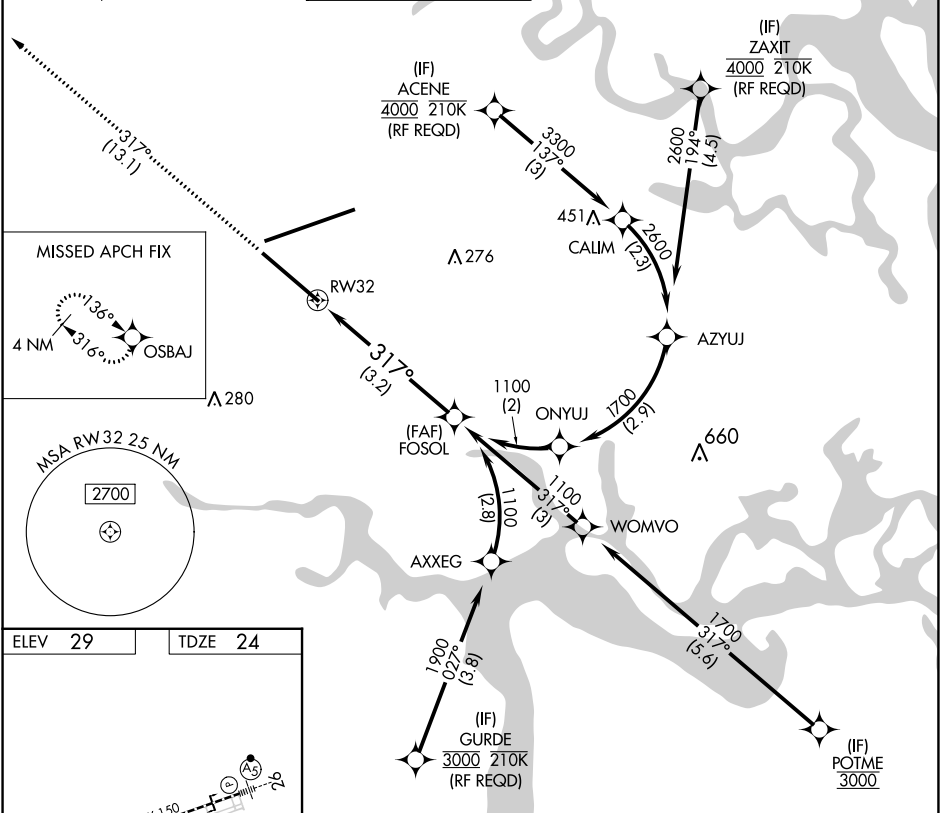
SE-3, 22 FEB 2024 to 21 MAR 2024

APP CRS	Rwy Idg	7701
317°	TDZE	24
	Apt Elev	29

RNAV (RNP) Y RWY 32

JACKSONVILLE INTL (JAX)

 For uncompensated Baro-VNAV systems, procedure NA below -5°C (23°F) or above 54°C (130°F). GPS required.		MISSED APPROACH: Climb to 2000 on track 317° to OSBAJ and hold.			
D-ATIS	JACKSONVILLE APP CON	JACKSONVILLE TOWER	GND CON	CLNC DEL	CPDLC
125.85	119.0 269.9	118.3 317.7	121.9 348.6	119.5 290.275	



CATEGORY	A	B	C	D
RNP 0.11 DA		359-1½	334 (400-1½)	
RNP 0.30 DA		423-1½	399 (400-1½)	

AUTHORIZATION REQUIRED

SE-3, 22 FEB 2024 to 21 MAR 2024


SE-3, 22 FEB 2024 to 21 MAR 2024

APP CRS	Rwy Idg	10000
077°	TDZE	29
	Apt Elev	29

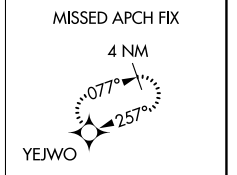
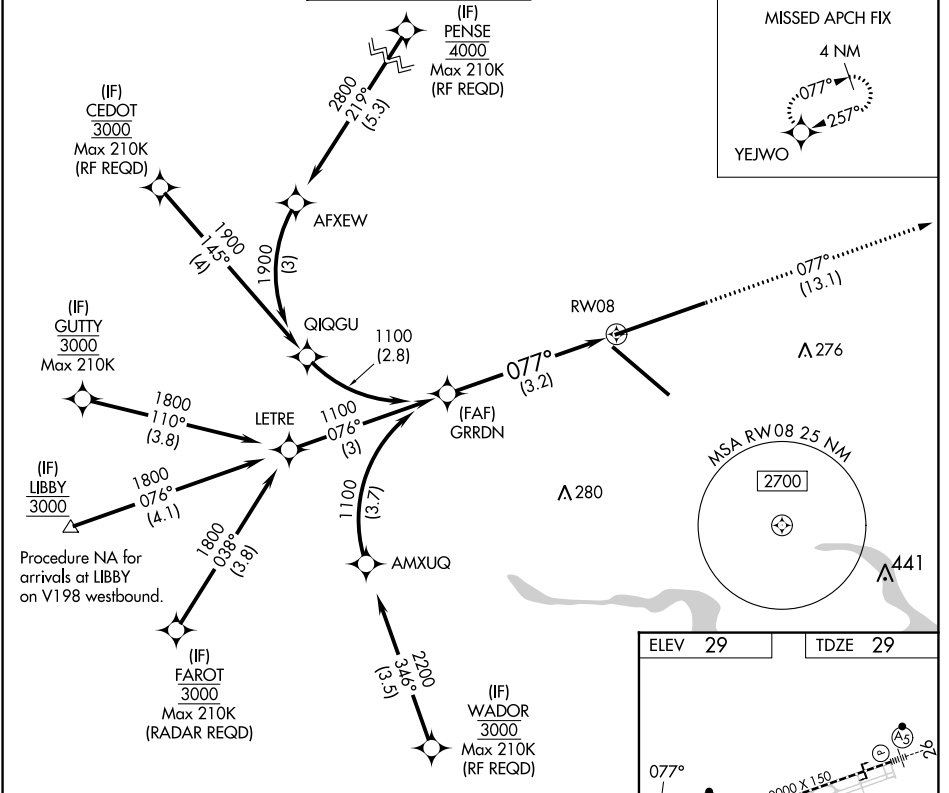
RNAV (RNP) Y RWY 8

JACKSONVILLE INTL (JAX)

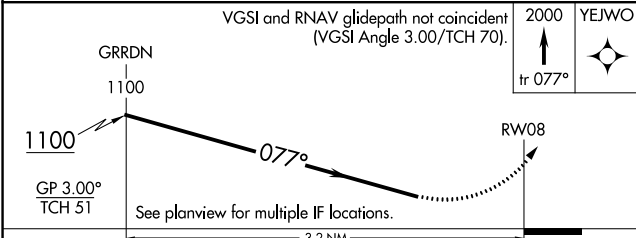
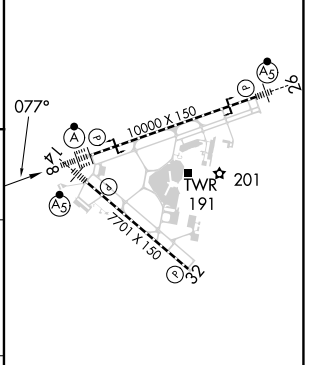
For uncompensated Baro-VNAV systems, procedure NAL below -5°C (23°F) or above 54°C (130°F). GPS required. For inop MALSR, increase RNP 0.11 all Cats visibility to 1 mile, increase RNP 0.30 all Cats visibility to 1½ mile.

ALSF-2  MISSED APPROACH: Climb to 2000 on track 077° to YEJWO and hold.

D-ATIS	JACKSONVILLE APP CON	JACKSONVILLE TOWER	GND CON	CLNC DEL	CPDLC
125.85	119.0 269.9	118.3 317.7	121.9 348.6	119.5 290.275	



ELEV	29	TDZE	29
------	----	------	----



CATEGORY	A	B	C	D
RNP 0.11 DA		356/40	327 (400-¾)	
RNP 0.30 DA		426/45	397 (400-¾)	

AUTHORIZATION REQUIRED

REIL Rwy 32
TDZ/CL Rwys 8, 14, and 26
HIRL Rwys 8-26 and 14-32

SE-3, 22 FEB 2024 to 21 MAR 2024


SE-3, 22 FEB 2024 to 21 MAR 2024

WAAS CH 70626 W14A	APP CRS 136°	Rwy Idg TDZE Apt Elev	7701 27 30
--	------------------------	-----------------------------	---------------------------------------

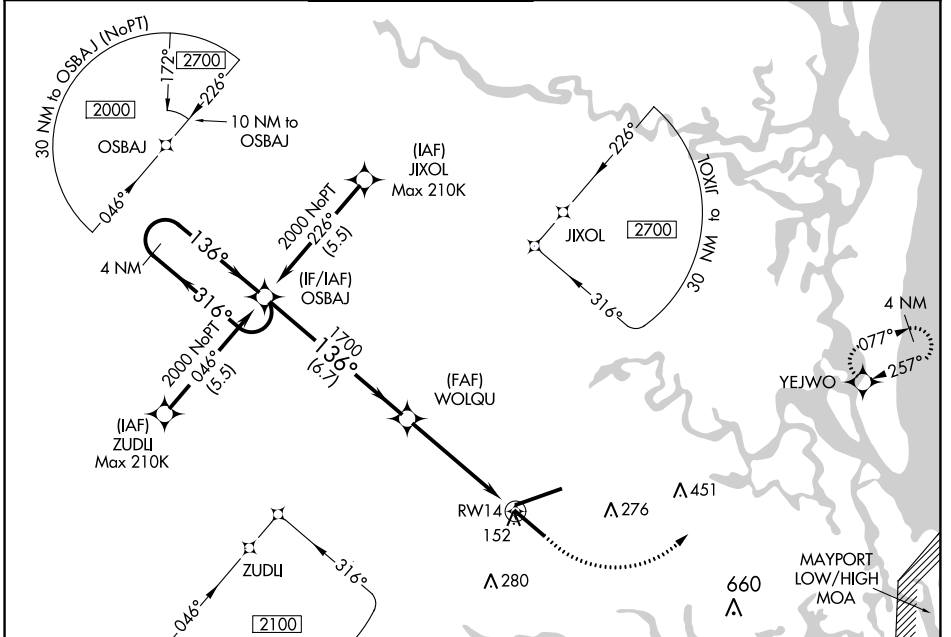
RNAV (GPS) Z RWY 14

JACKSONVILLE INTL (JAX)

▼ For uncompensated Baro-VNAV systems, LNAV/VNAV NA below -5°C (23°F) or above 54°C (130°F). For inoperative MALS, increase LNAV/VNAV all Cats visibility to 1½ miles and increase LNAV Cats A/B to 1 mile. DME/DME RNP-0.3 NA. Helicopter visibility reduction below ¾ SM NA.

MALS  MISSED APPROACH: Climb to 500 then climbing left turn to 2000 direct YEJWO and hold.

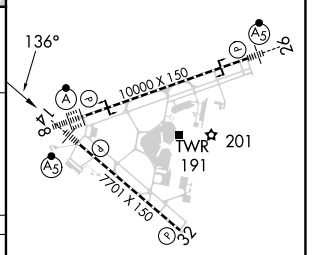
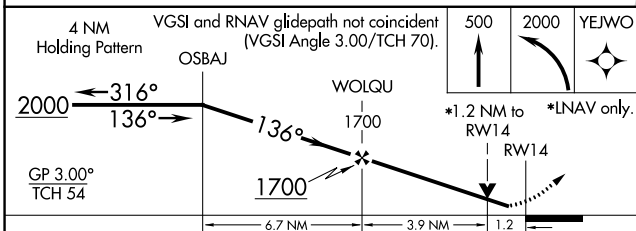
D-ATIS 125.85	JACKSONVILLE APP CON 119.0 269.9	JACKSONVILLE TOWER 118.3 317.7	GND CON 121.9 348.6	CLNC DEL 119.5 290.275	CPDLC
-------------------------	--	--	-------------------------------	----------------------------------	-------



SE-3, 22 FEB 2024 to 21 MAR 2024

SE-3, 22 FEB 2024 to 21 MAR 2024

ELEV 30	TDZE 27
---------	---------



CATEGORY	A	B	C	D
LPV DA		227-½	200 (200-½)	
LNAV/VNAV DA		363-¾	336 (400-¾)	
LNAV MDA	480-¾	453 (500-¾)	480-⅞	453 (500-⅞)
CIRCLING	520-1	490 (500-1)	580-1½ 550 (600-1½)	640-2 610 (700-2)


REIL Rwy 32
 TDZ/CL Rwys 8, 14, and 26
 HIRL Rwys 8-26 and 14-32

WAAS CH 97626 W26A	APP CRS 257°	Rwy Idg 10000 TDZE 27 Apt Elev 30
--	------------------------	--

RNAV (GPS) Z RWY 26

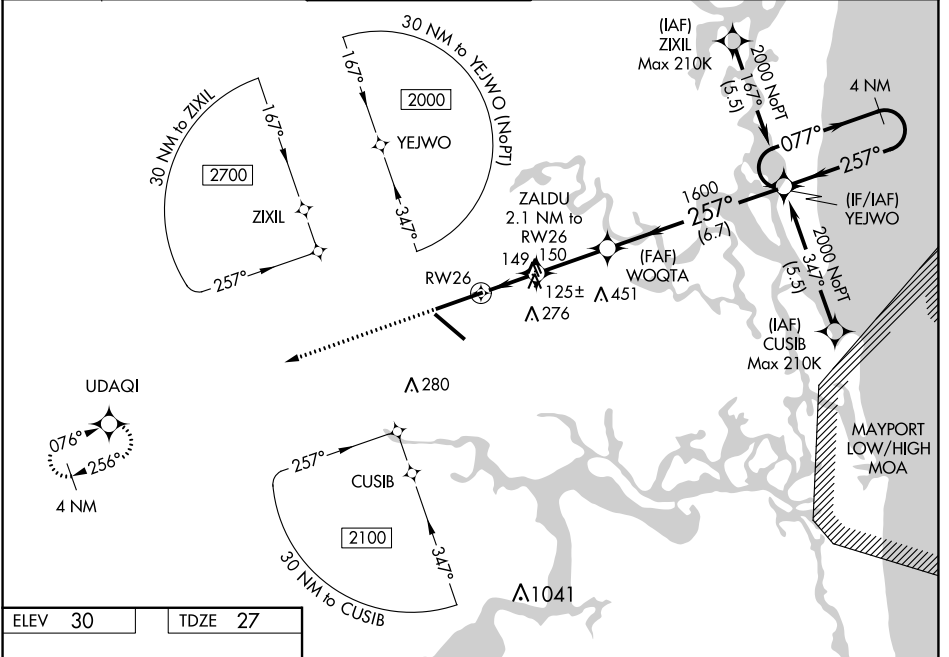
JACKSONVILLE INTL (JAX)

For uncompensated Baro-VNAV systems, LNAV/VNAV NA below -5°C (23°F) or above 54°C (130°F). For inoperative MALSR, increase LNAV/VNAV all Cats visibility to RVR 4500 and increase LNAV Cats C/D visibility to RVR 5500. DME/DME RNP-0.3 NA.

MALSR 

MISSED APPROACH: Climb to 2000 direct UDAQI and hold.

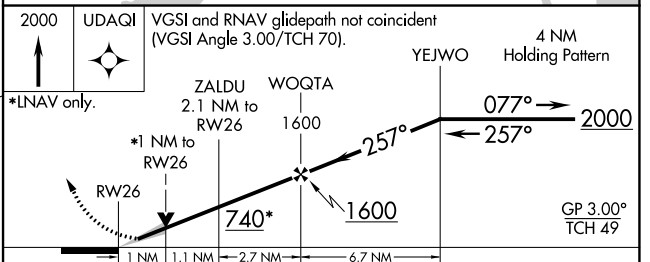
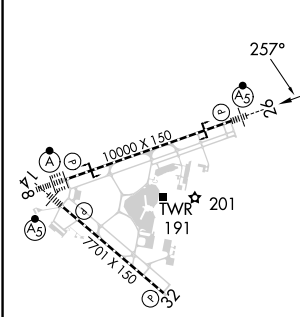
D-ATIS 125.85	JACKSONVILLE APP CON 119.0 269.9	JACKSONVILLE TOWER 118.3 317.7	GND CON 121.9 348.6	CLNC DEL 119.5 290.275	CPDLC
-------------------------	--	--	-------------------------------	----------------------------------	-------



SE-3, 22 FEB 2024 to 21 MAR 2024

SE-3, 22 FEB 2024 to 21 MAR 2024

ELEV 30	TDZE 27
---------	---------



CATEGORY	A	B	C	D
LPV DA		227/18	200 (200-½)	
LNAV/VNAV DA		297/24	270 (300-½)	
LNAV MDA	400/24	373 (400-½)	400/35	373 (400-¾)
CIRCLING	520-1	490 (500-1)	580-1½ 550 (600-1½)	640-2 610 (700-2)

REIL Rwy 32
TDZ/CL Rwys 8, 14, and 26
HIRL Rwys 8-26 and 14-32

WAAS CH 40199 W32A	APP CRS 317°	Rwy Idg TDZE Apt Elev	7701 24 30
--	------------------------	-----------------------------	---------------------------------------

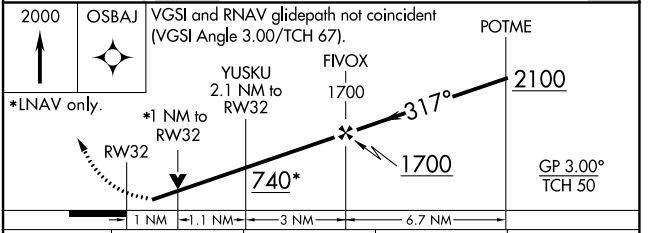
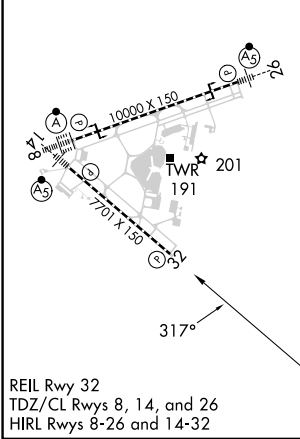
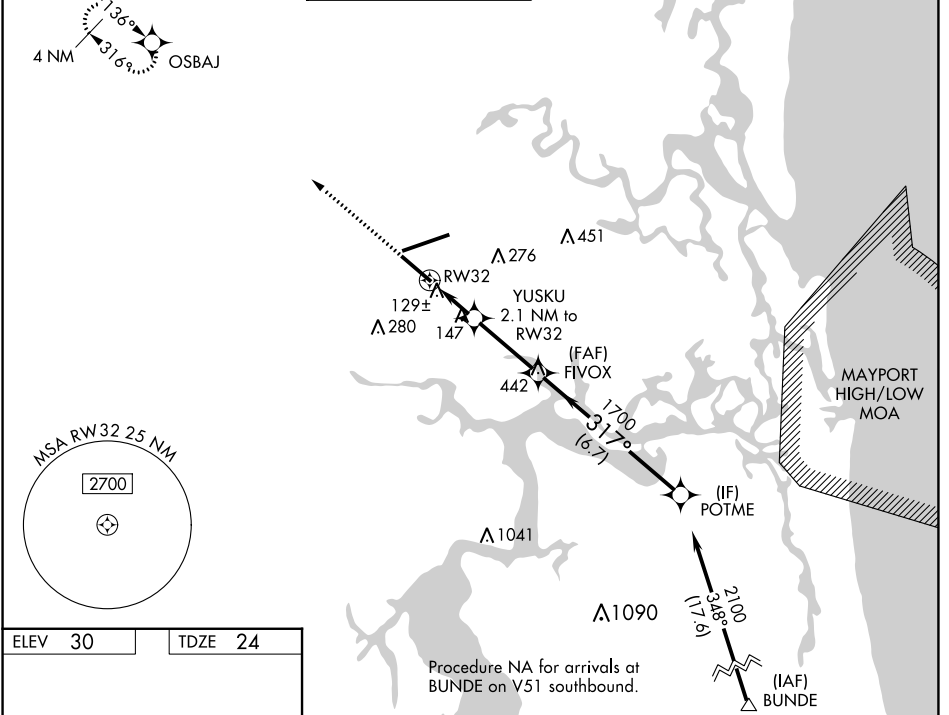
RNAV (GPS) Z RWY 32

JACKSONVILLE INTL (JAX)

▼ For uncompensated Baro-VNAV systems, procedure NA below -5°C (23°F) or above 54°C (130°F). DME/DME RNP-0.3 NA. Helicopter visibility reduction below $\frac{3}{4}$ SM NA.

MISSED APPROACH: Climb to 2000 direct OSBAJ and hold.

D-ATIS 125.85	JACKSONVILLE APP CON 119.0 269.9	JACKSONVILLE TOWER 118.3 317.7	GND CON 121.9 348.6	CLNC DEL 119.5 290.275	CPDLC
-------------------------	--	--	-------------------------------	----------------------------------	-------



CATEGORY	A	B	C	D
LPV DA		336-1	312 (400-1)	
LNAV/VNAV DA		387-1 $\frac{1}{4}$	363 (400-1 $\frac{1}{4}$)	
LNAV MDA		400-1	376 (400-1)	
CIRCLING	520-1	490 (500-1)	580-1 $\frac{1}{2}$ 550 (600-1 $\frac{1}{2}$)	640-2 610 (700-2)

SE-3, 22 FEB 2024 to 21 MAR 2024

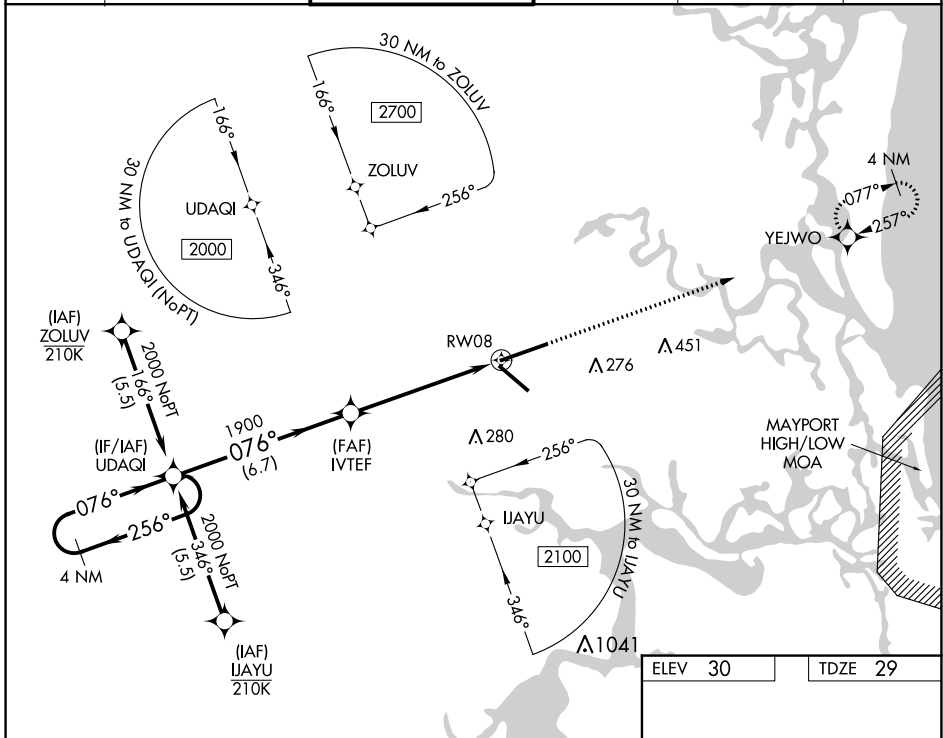
SE-3, 22 FEB 2024 to 21 MAR 2024

WAAS CH 50526 W08A	APP CRS 076°	Rwy Idg 10000 TDZE 29 Apt Elev 30
--	------------------------	--

RNAV (GPS) Z RWY 8

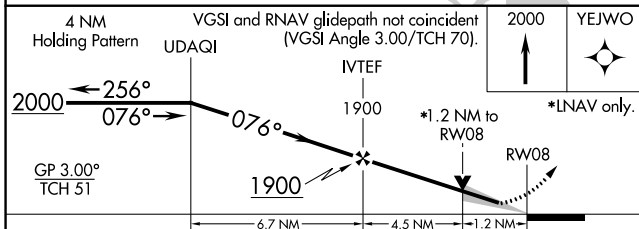
JACKSONVILLE INTL (JAX)

For uncompensated Baro-VNAV systems, procedure NA below -5°C (23°F) or above 54°C (130°F). DME/DME RNP-0.3 NA.				ALSF-2 	MISSED APPROACH: Climb to 2000 direct YEJWO and hold.
D-ATIS 125.85	JACKSONVILLE APP CON 119.0 269.9	JACKSONVILLE TOWER 118.3 317.7	GND CON 121.9 348.6	CLNC DEL 119.5 290.275	CPDLC

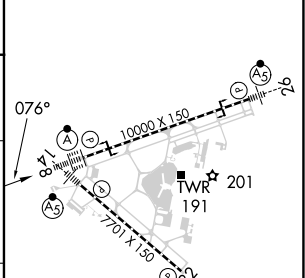


SE-3, 22 FEB 2024 to 21 MAR 2024

SE-3, 22 FEB 2024 to 21 MAR 2024



ELEV 30	TDZE 29
---------	---------



CATEGORY	A	B	C	D
LPV DA	229/18		200 (200-½)	
LNAV/VNAV DA	363/32		334 (400-⅙)	
LNAV MDA	480/24	451 (500-½)	480/45	451 (500-⅔)
CIRCLING	520-1	490 (500-1)	580-1½ 550 (600-1½)	640-2 610 (700-2)

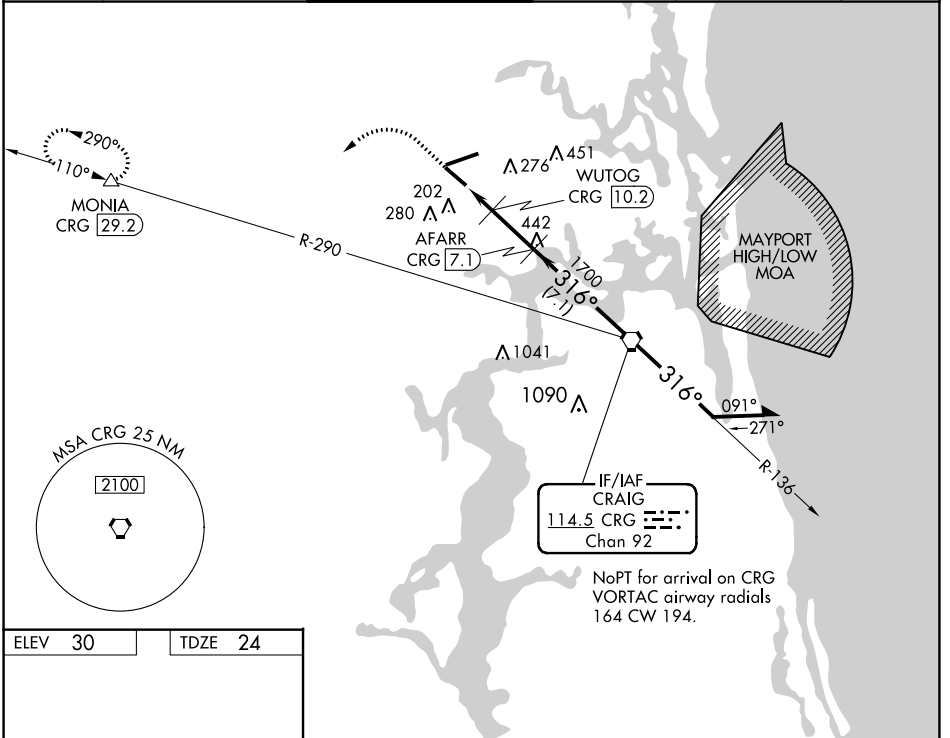
REIL Rwy 32
TDZ/CL Rwys 8, 14, and 26
HIRL Rwys 8-26 and 14-32

VORTAC CRG 114.5 Chan 92	APP CRS 316°	Rwy ldg TDZE 24 Apt Elev 30	7701
--	------------------------	---	-------------

VOR/DME RWY 32

JACKSONVILLE INTL (JAX)

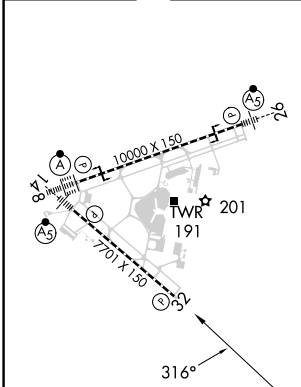
<p>▼ Helicopter visibility reduction by below ¾ mile NA. ▲ Cat E procedure turn NA.</p>		<p>MISSED APPROACH: Climb to 1000 then climbing left turn to 3000 on heading 250° and on CRG VORTAC R-290 to MONIA/CRG 29.2 DME and hold.</p>			
D-ATIS 125.85	JACKSONVILLE APP CON 119.0 269.9	JACKSONVILLE TOWER 118.3 317.7	GND CON 121.9 348.6	CLNC DEL 119.5 290.275	CPDLC



SE-3, 22 FEB 2024 to 21 MAR 2024

SE-3, 22 FEB 2024 to 21 MAR 2024

ELEV 30	TDZE 24
---------	---------



REIL RWY 32
TDZ/CL RWYS 8, 14, and 26
HIRL RWYS 8-26 and 14-32

1000	3000	CRG R-290	MONIA	VGSI and ILS glidepath not coincident (VGSI Angle 3.05/TCH 68).	
↑	hdg 250°		△		
<p>AFARR CRG 7.1</p> <p>WUTOG CRG 10.2</p> <p>CRG 12.2</p> <p>CRG 11.1</p> <p>3.00° TCH 50</p> <p>720</p> <p>1700</p>		<p>CRG VORTAC</p> <p>6000</p> <p>136°</p> <p>2100</p> <p>316°</p> <p>Remain within 10 NM</p>			
<p>1.1 0.9 → 3.1 NM → 7.1 NM →</p>					
CATEGORY	A	B	C	D	E
S-32	460-1	436 (500-1)	460-1¼	436 (500-1¼)	
CIRCLING	520-1	490 (500-1)	580-1½ 550 (600-1½)	640-2 610 (700-2)	760-2½ 730 (800-2½)