

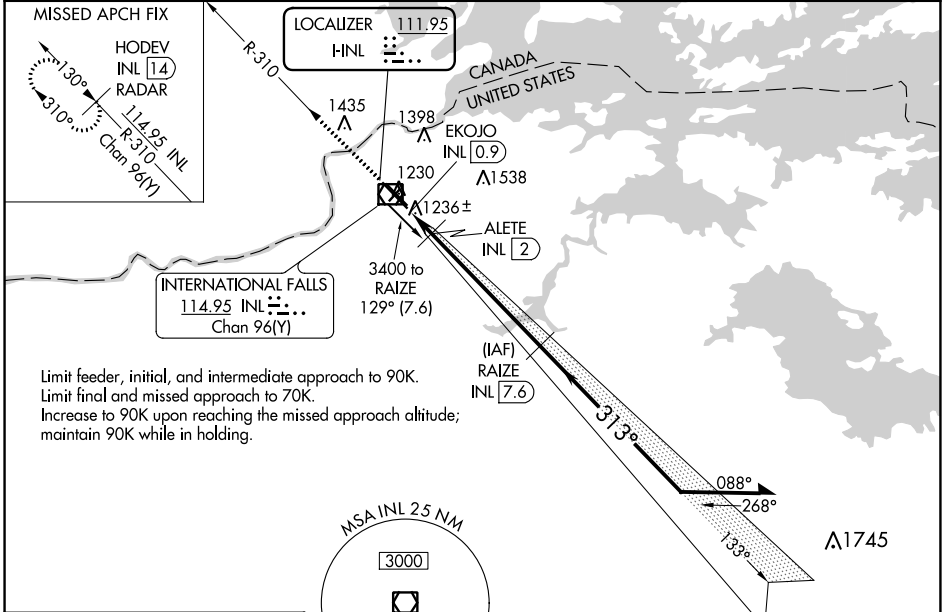
LOC I-INL 111.95	APP CRS 313°	Rwy Idg TDZE Apt Elev	7400 1166 1182
----------------------------	------------------------	-----------------------------	---

COPTER ILS or LOC RWY 31

FALLS INTL/EINARSON FLD (INL)

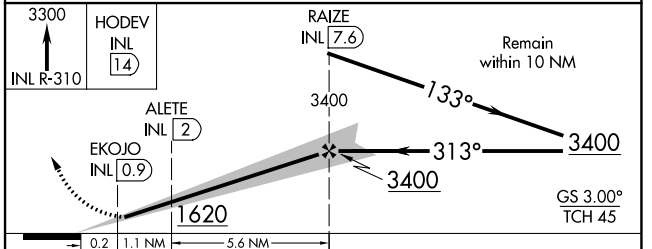
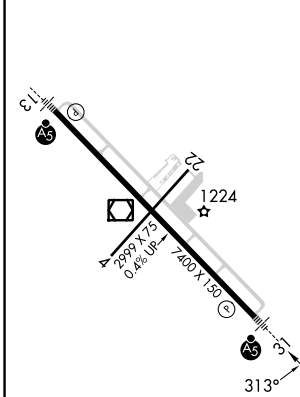
DME required. #DME from INL VOR/DME.	MALSR 	MISSED APPROACH: Climb to 3300 on INL VOR/DME R-310 to HODEV/INL 14 DME/RADAR and hold.
---	-----------	---

ASOS 120.0	MINNEAPOLIS CENTER 120.9 377.1	UNICOM 122.8 (CTAF)
----------------------	--	-------------------------------



Limit feeder, initial, and intermediate approach to 90K.
Limit final and missed approach to 70K.
Increase to 90K upon reaching the missed approach altitude;
maintain 90K while in holding.

ELEV 1182	D	TDZE 1166
-----------	---	-----------



CATEGORY	COPTER	
H-ILS 31	1366-1/2	200 (200-1/2)
H-LOC 31	1620-1/2	454 (500-1/2)
ALETE FIX MINIMUMS#		
H-LOC 31	1500-1/2	334 (400-1/2)

FAF to MAP 6.7 NM					
Knots	45	60	75	90	105
Min:Sec	8:57	6:42	5:22	4:28	3:50

NC-1, 22 FEB 2024 to 21 MAR 2024

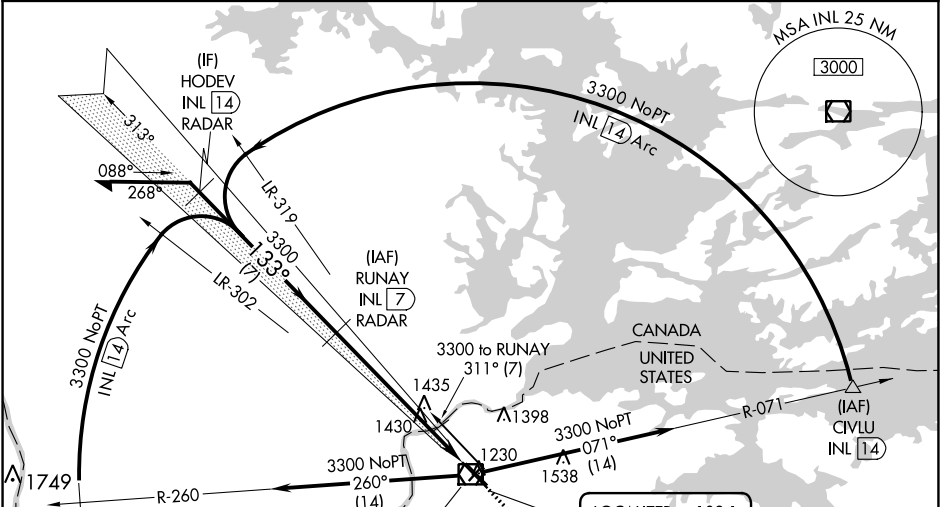
NC-1, 22 FEB 2024 to 21 MAR 2024

LOC I-ABK 109.1	APP CRS 133°	Rwy Idg TDZE Apt Elev	7400 1184 1182
---------------------------	------------------------	-----------------------------	---

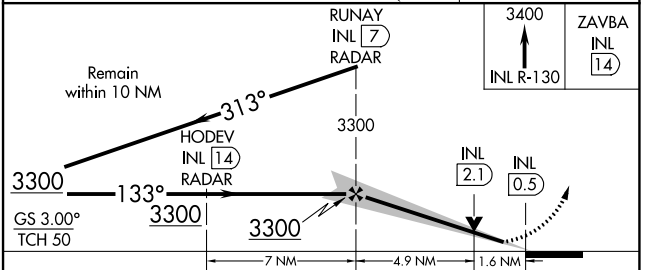
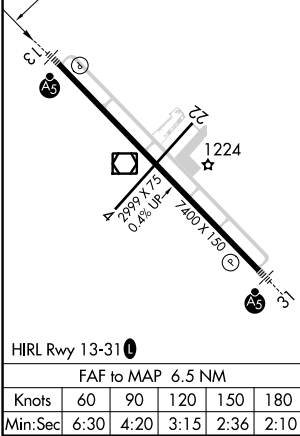
ILS or LOC RWY 13

FALLS INTL/EINARSON FLD (INL)

DME or RADAR required.		MALSR 	MISSED APPROACH: Climb to 3400 on INL VOR/DME R-130 to ZAVBA/INL 14 DME/RADAR and hold.
<p>NA Circling Rwy 4, 22 NA at night. Caution opposing ILS continuously on. DME from INL VOR/DME. DME use requires simultaneous reception of I-ABK and INL DME.</p>			
ASOS 120.0	MINNEAPOLIS CENTER 120.9 377.1	UNICOM 122.8 (CTAF)	



ELEV 1182	D	TDZE 1184
<p>INTERNATIONAL FALLS 114.95 INL Chan 96(Y)</p>		
<p>LOCALIZER I-ABK 109.1</p>		
<p>MISSED APCH FIX ZAVBA INL 14 RADAR</p>		



CATEGORY	A	B	C	D
S-ILS 13	1384-1/2 200 (200-1/2)			
S-LOC 13	1760-1/2	576 (600-1/2)	1760-1/4	576 (600-1/4)
C CIRCLING	1760-1	578 (600-1)	1900-2 718 (800-2)	1900-2 1/4 718 (800-2 1/4)

NC-1, 22 FEB 2024 to 21 MAR 2024

NC-1, 22 FEB 2024 to 21 MAR 2024

LOC I-INL 111.95	APP CRS 313°	Rwy Idg TDZE Apt Elev	7400 1166 1182
----------------------------	------------------------	-----------------------------	---

ILS or LOC RWY 31

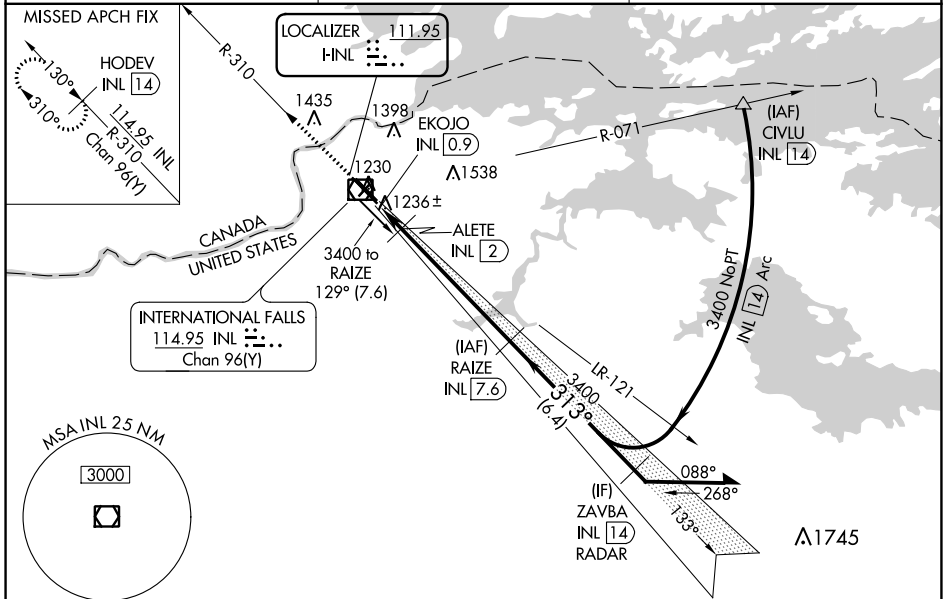
FALLS INTL/EINARSON FLD (INL)

DME required.

MAISR

MISSED APPROACH: Climb to 3300 on INL VOR/DME R-310 to HODEV/INL 14 DME and hold.

ASOS 120.0	MINNEAPOLIS CENTER 120.9 377.1	UNICOM 122.8 (CTAF)
----------------------	--	-------------------------------



ELEV 1182 **D** TDZE 1166

3300 HODEV INL 14

RAIZE INL 7.6

3400 ZAVBA INL 14 RADAR

1620

3400

3400

313°

GS 3.00° TCH 45

0.2 1.1 NM 5.6 NM 6.4 NM

CATEGORY	A	B	C	D
S-ILS 31	1366-½ 200 (200-½)			
S-LOC 31	1620-½	454 (500-½)	1620-¾	454 (500-¾)
C CIRCLING	1620-1 438 (500-1)	1680-1 498 (500-1)	1900-2 718 (800-2)	1900-2¼ 718 (800-2¼)
ALETE FIX MINIMUMS#				
S-LOC 31	1500-½ 334 (400-½)			
C CIRCLING	1620-1 438 (500-1)	1680-1 498 (500-1)	1900-2 718 (800-2)	1900-2¼ 718 (800-2¼)

HIRL Rwy 13-31

NC-1, 22 FEB 2024 to 21 MAR 2024

NC-1, 22 FEB 2024 to 21 MAR 2024

WAAS CH 53706 W13A	APP CRS 133°	Rwy Idg 7400 TDZE 1184 Apt Elev 1182
--	------------------------	---

RNAV (GPS) RWY 13

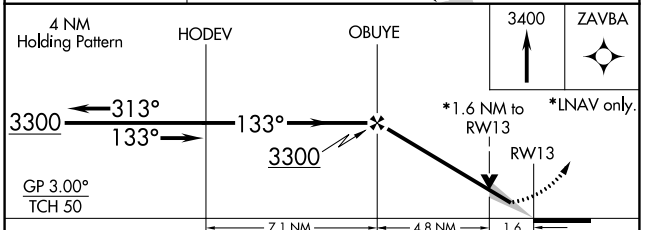
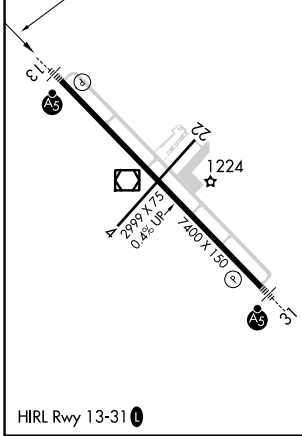
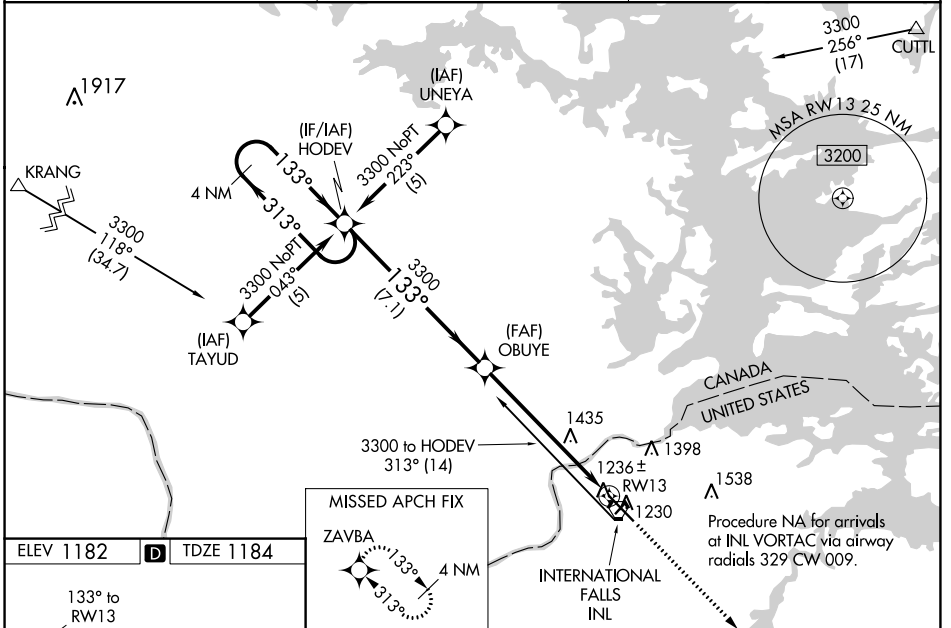
FALLS INTL/EINARSON FLD (INL)

V When local altimeter setting not received, use Baudette altimeter setting: increase LPV DA to 1561 feet and visibility all Cats ¼ SM; increase LNAV/VNAV DA to 1796 feet and visibility all Cats ¾ SM; increase all MDAs 140 feet and visibility LNAV Cat C and D and Circling Cat C and D ½ SM. For inop MALS R when using Baudette altimeter setting, increase LPV visibility ½ mile all Cats, inop table does not apply to LNAV/VNAV. VDP NA when using Baudette altimeter setting. Baro-VNAV NA when using Baudette altimeter setting. Circling to Rwy 4-22 NA at night. For uncompensated Baro-VNAV systems, LNAV/VNAV NA below -17°C (2°F) or above 47°C (116°F). DME/DME RNP-0.3 NA.

MALS R

MISSED APPROACH:
Climb to 3400 direct ZAVBA and hold.

ASOS 120.0	MINNEAPOLIS CENTER 120.9 377.1	UNICOM 122.8 (CTAF)
----------------------	--	-------------------------------



CATEGORY	A	B	C	D
LPV DA		1434-½	250 (300-½)	
LNAV/VNAV DA		1669-1¼	485 (500-1¼)	
LNAV MDA	1760-½ 576 (600-½)		1760-1 576 (600-1)	1760-1¼ 576 (600-1¼)
CIRCLING	1760-1 578 (600-1)		1900-2 718 (800-2)	1900-2¼ 718 (800-2¼)

NC-1, 22 FEB 2024 to 21 MAR 2024

NC-1, 22 FEB 2024 to 21 MAR 2024

WAAS CH 78406 W31A	APP CRS 313°	Rwy Idg 7400 TDZE 1166 Apt Elev 1182
---------------------------------	------------------------	---

RNAV (GPS) RWY 31

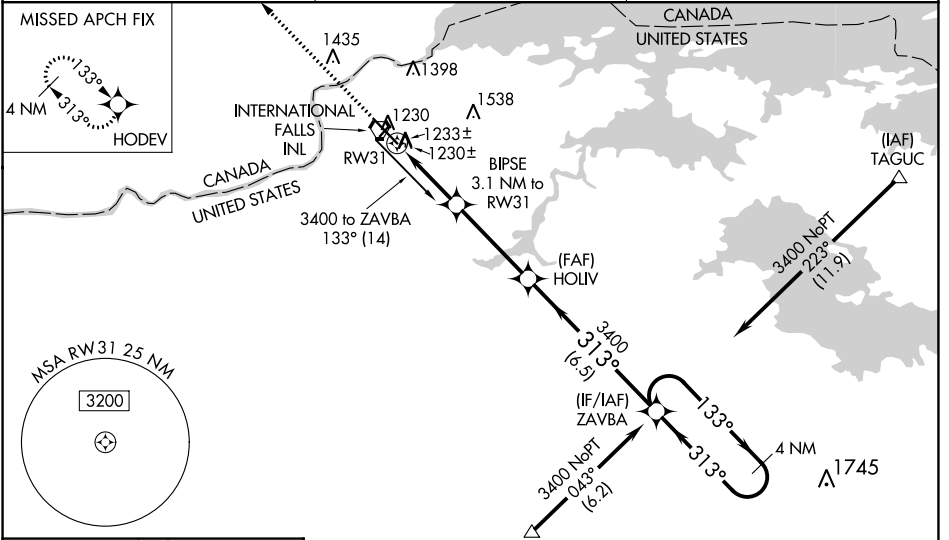
FALLS INTL/EINARSON FLD (INL)

⚠ When local altimeter setting not received, use Baudette altimeter setting: increase LPV DA to 1589 feet and visibility all Cats ½ SM; increase LNAV/VNAV DA to 1627 feet and visibility all Cats ½ SM; increase all MDAs 140 feet and visibility LNAV Cat C ¼ SM and Circling Cat C and D ½ SM. For inop MALSRS when using Baudette altimeter setting, increase LPV visibility ½ mile all Cats. For inop MALSRS, increase LPV visibility ½ mile all Cats, inop table does not apply to LNAV Cat D. VDP NA when using Baudette altimeter setting. Baro-VNAV NA when using Baudette altimeter setting. Circling to Rwy 4-22 NA at night. For uncompensated Baro-VNAV systems, LNAV/VNAV NA below -17°C (2°F) or above 47°C (116°F). DME/DME RNP-0.3 NA.

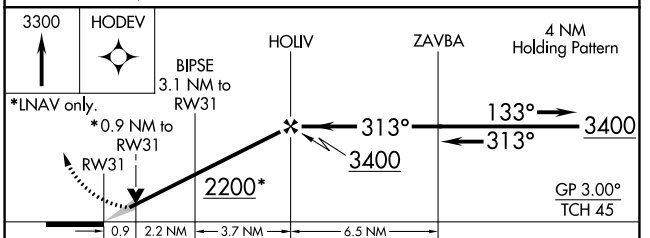
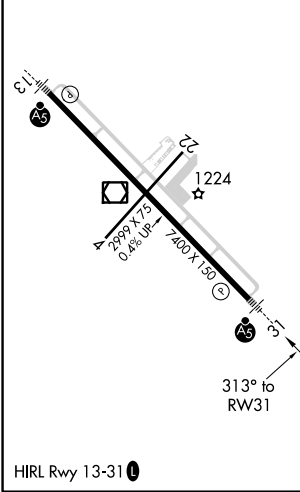
MALSRS

MISSED APPROACH:
Climb to 3300 direct HODEV and hold.

ASOS 120.0	MINNEAPOLIS CENTER 120.9 377.1	UNICOM 122.8 (CTAF)
----------------------	--	-------------------------------



ELEV 1182	D	TDZE 1166
-----------	----------	-----------



CATEGORY	A	B	C	D
LPV DA		1462-½	296 (300-½)	
LNAV/VNAV DA		1500-¾	334 (400-¾)	
LNAV MDA		1500-½	334 (400-½)	1500-1 334 (400-1)
CIRCLING	1620-1 438 (500-1)	1680-1 498 (500-1)	1900-2 718 (800-2)	1900-2½ 718 (800-2½)

NC-1, 22 FEB 2024 to 21 MAR 2024

NC-1, 22 FEB 2024 to 21 MAR 2024

VORTAC INL 114.95 Chan 96(Y)	APP CRS 134°	Rwy Idg 7400 TDZE 1184 Apt Elev 1182
--	------------------------	---

VOR RWY 13

FALLS INTL/EINARSON FLD (INL)

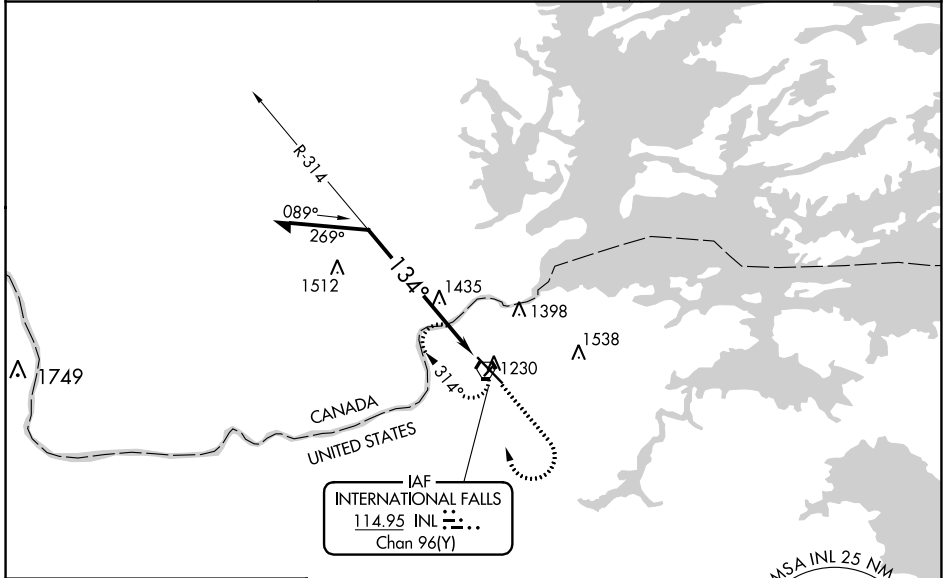
⚠ Circling to Rwy 4-22 NA at night. VDP NA when using Baudette altimeter setting. When local altimeter setting not received, use Baudette altimeter setting and increase all MDAs 140 feet, and S-13 Cats A/B visibility ¼ mile, Cats C/D visibility ½ mile. Increase Circling Cat B visibility ¼ mile, Cat C and D ½ mile. For inop MALS when using Baudette altimeter setting, increase S-13 Cat A visibility ¼ mile.

MALS



MISSED APPROACH: Climb to 2900 then right turn direct INL VORTAC and hold.

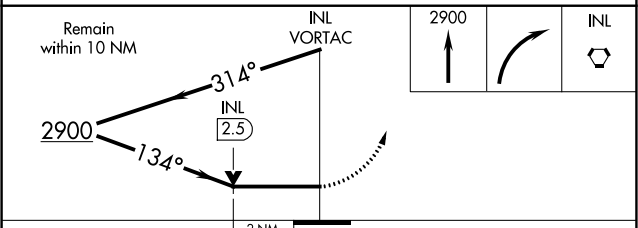
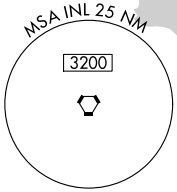
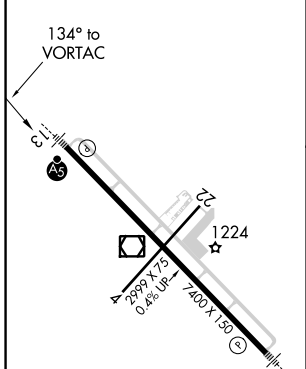
ASOS 120.0	MINNEAPOLIS CENTER 120.9 377.1	UNICOM 122.8 (CTAF)
----------------------	--	-------------------------------



NC-1, 22 FEB 2024 to 21 MAR 2024

NC-1, 22 FEB 2024 to 21 MAR 2024

ELEV 1182	D	TDZE 1184
-----------	----------	-----------



CATEGORY	A	B	C	D
S-13	1880-½ 696 (700-½)	1880-1½ 696 (700-1½)	1880-1¾ 696 (700-1¾)	1880-1¾ 696 (700-1¾)
CIRCLING	1880-1 698 (700-1)	1900-2 718 (800-2)	1900-2¼ 718 (800-2¼)	1900-2¼ 718 (800-2¼)

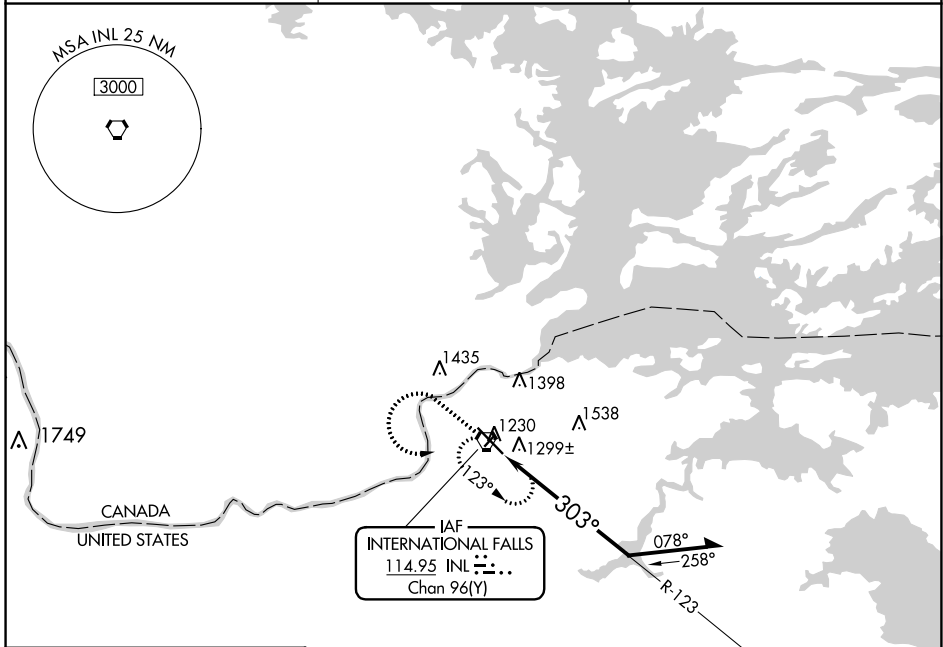
VORTAC INL 114.95 Chan 96(Y)	APP CRS 303°	Rwy Idg TDZE Apt Elev	7400 1174 1182
---	------------------------	-----------------------------	---

VOR RWY 31

FALLS INTL/EINARSON FLD (INL)

For inop MALS/R, increase S-31 Cat D visibility to 1 1/4. Circling to Rwy 4-22 NA at night.	MALS/R	MISSED APPROACH: Climb to 2900 then left turn direct INL VORTAC and hold.

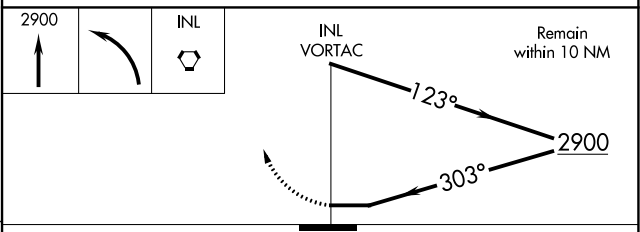
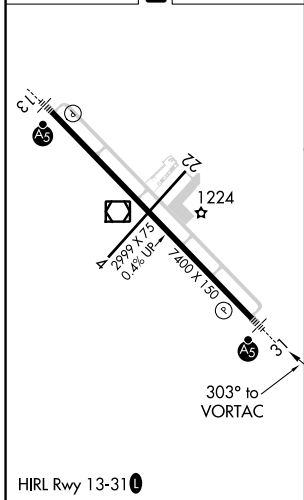
ASOS 120.0	MINNEAPOLIS CENTER 120.9 377.1	UNICOM 122.8 (CTAF)
----------------------	--	-------------------------------



NC-1, 22 FEB 2024 to 21 MAR 2024

NC-1, 22 FEB 2024 to 21 MAR 2024

ELEV 1182		TDZE 1174
-----------	--	-----------



CATEGORY	A	B	C	D
S-31	1600-1/2	426 (500-1/2)	1600-3/4 426 (500-3/4)	1600-1 426 (500-1)
CIRCLING	1620-1 438 (500-1)	1680-1 498 (500-1)	1900-2 718 (800-2)	1900-2 1/4 718 (800-2 1/4)