

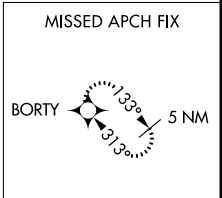
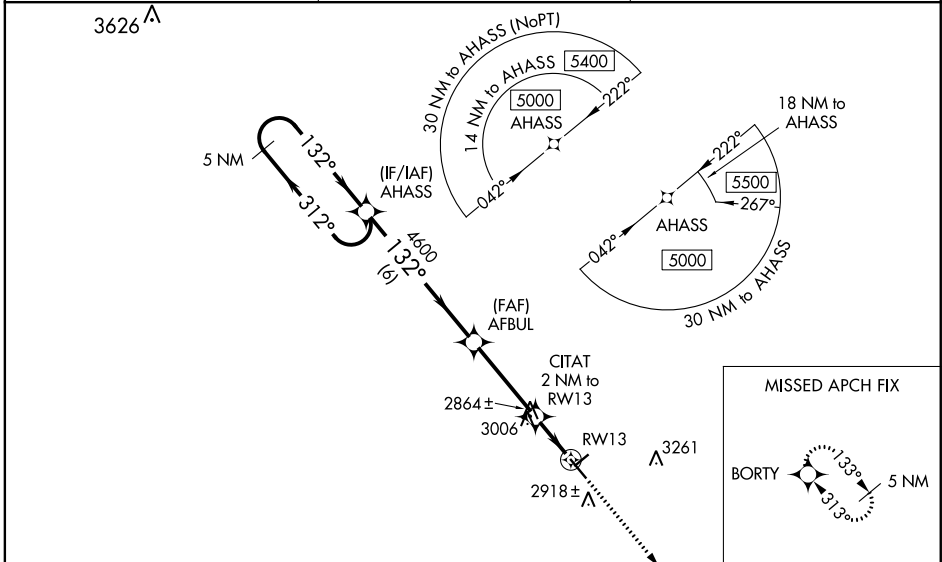
WAAS CH <b>93831</b> <b>W13A</b>	APP CRS <b>132°</b>	Rwy Idg TDZE Apt Elev	<b>5003</b> <b>2822</b> <b>2822</b>
--	------------------------	-----------------------------	---

# RNAV (GPS) RWY 13

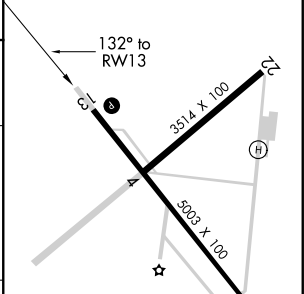
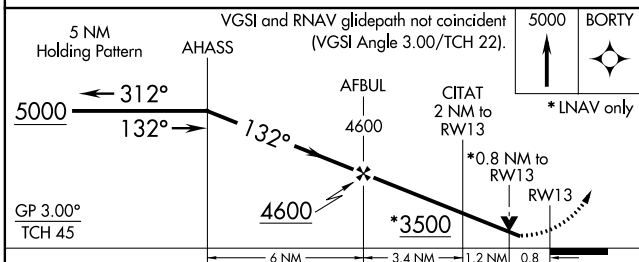
WINKLER COUNTY (INK)

RNP APCH.	<p><b>▽</b> Baro-VNAV NA when using Pecos altimeter setting. For uncompensated Baro-VNAV systems, LNAV/VNAV NA below -20°C or above 54°C. VDP NA with Pecos altimeter setting.</p> <p><b>▲</b> Helicopter visibility reduction below ¾ SM NA. When local altimeter setting not received, use Pecos altimeter setting: Increase DA to 3167 feet and LPV and LNAV/VNAV all Cats visibility ¾ SM; increase all MDAs 100 feet and LNAV and Circling Cat C visibility ½ SM.</p>	MISSED APPROACH: Climb to 5000 direct BORTY and hold.
-----------	--	--

ASOS <b>118.325</b>	FORT WORTH CENTER <b>133.1 298.95</b>	UNICOM <b>123.0 (CTAF) 0</b>
------------------------	--	---------------------------------



ELEV 2822	TDZE 2822
-----------	-----------



CATEGORY	A	B	C	D
LPV DA	3072-¾ 250 (300-¾)			NA
LNAV/VNAV DA	3072-¾ 250 (300-¾)			NA
LNAV MDA	3320-1 498 (500-1)		3320-1⅓ 498 (500-1⅓)	NA
CIRCLING	3320-1 498 (500-1)		3580-2¼ 758 (800-2¼)	NA

MRL Rwy 4-22 and 13-31 0

SC-3, 19 MAY 2022 to 16 JUN 2022

SC-3, 19 MAY 2022 to 16 JUN 2022

WAAS CH <b>56233</b> <b>W31A</b>	APP CRS <b>313°</b>	Rwy Idg TDZE Apt Elev	<b>5003</b> <b>2818</b> <b>2822</b>
--	------------------------	-----------------------------	---

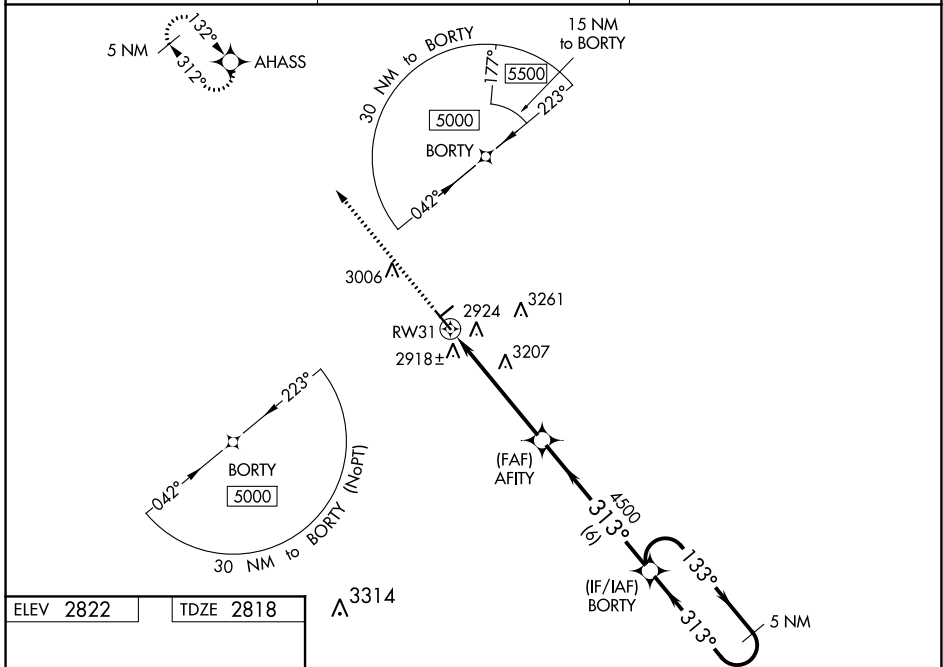
# RNAV (GPS) RWY 31

WINKLER COUNTY (INK)

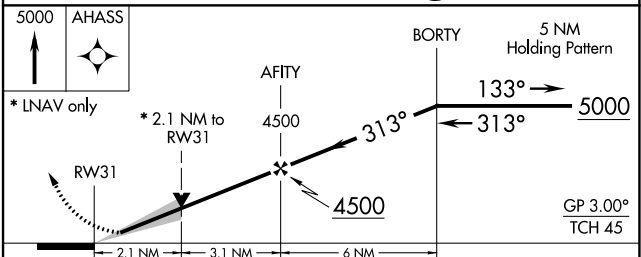
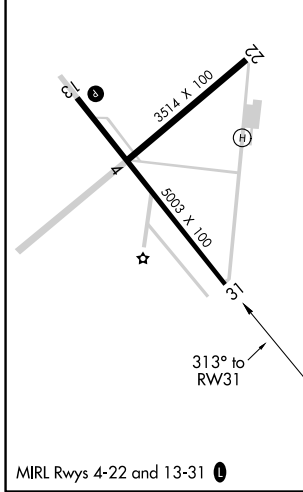
**▼** Baro-VNAV NA when using Pecos altimeter setting. For uncompensated Baro-VNAV systems, LNAV/VNAV NA below -20°C (-4°F) or above 54°C (130°F). DME/DME RNP-0.3 NA. VDP NA with Pecos altimeter setting. When local altimeter setting not received, use Pecos altimeter setting and increase all DA 95 feet and all MDA 100 feet. Increase LPV all Cats visibility ¼ mile, LNAV/VNAV all Cats visibility ⅓ mile, LNAV Cat B visibility ¼ mile, LNAV Cat C visibility ½ mile and Circling Cats B and C visibility ¼ mile.

**MISSED APPROACH:**  
Climb to 5000 direct AHASS and hold.

ASOS <b>118.325</b>	FORT WORTH CENTER <b>133.1 298.95</b>	UNICOM <b>123.0 (CTAF) ①</b>
------------------------	--	---------------------------------



ELEV 2822	TDZE 2818
-----------	-----------



CATEGORY	A	B	C	D
LPV DA	3018-¾		200 (200-¾)	NA
LNAV/VNAV DA	3130-1		312 (400-1)	NA
LNAV MDA	3520-1	702 (700-1)	3520-2 702 (700-2)	NA
CIRCLING	3520-1	698 (700-1)	3580-2¼ 758 (800-2¼)	NA

SC-3, 19 MAY 2022 to 16 JUN 2022

SC-3, 19 MAY 2022 to 16 JUN 2022

VORTAC INK <b>112.1</b> Chan <b>58</b>	APP CRS <b>150°</b>	Rwy Idg TDZE Apt Elev	<b>5003</b> <b>2822</b> <b>2822</b>
--	------------------------	-----------------------------	---

# VOR RWY 13

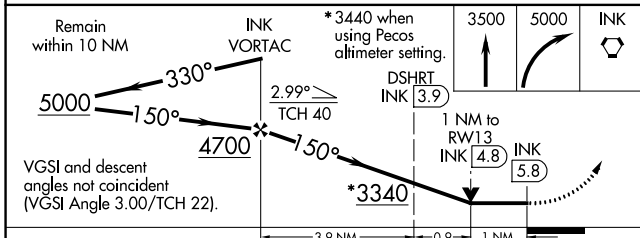
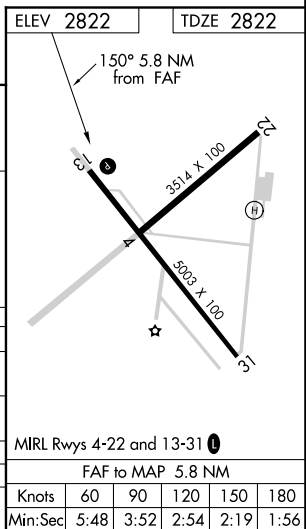
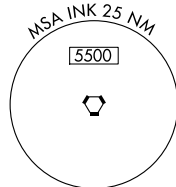
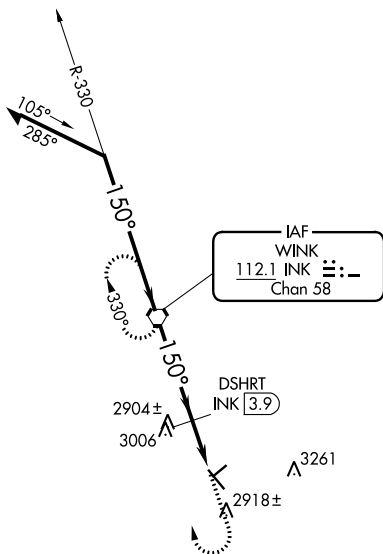
WINKLER COUNTY (INK)

**⚠** When local altimeter setting not received, use Pecos altimeter setting and increase all MDAs 100 feet and Cat C visibility ¼ mile and increase DSHRT Fix: all MDA 100 feet and S-13 Cat C visibility ¼ mile. VDP NA when using Pecos altimeter setting.

**MISSED APPROACH:** Climb to 3500 then climbing right turn to 5000 direct INK VORTAC and hold.

ASOS <b>118.325</b>	FORT WORTH CENTER <b>133.1 298.95</b>	UNICOM <b>123.0 (CTAF) 0</b>
------------------------	--	---------------------------------

3626 **⚠**



CATEGORY	A	B	C	D
S-13	3340-1	518 (600-1)	3340-1½ 518 (600-1½)	NA
CIRCLING	3340-1	518 (600-1)	3340-1½ 518 (600-1½)	NA
DSHRT FIX MINIMUMS				
S-13	3160-1 338 (400-1)			NA
CIRCLING	3280-1 458 (500-1)	3300-1 478 (500-1)	3300-1½ 478 (500-1½)	NA