

CONRA TWO DEPARTURE
(CONRA2, CONRA) 21 JUL 16

AWOS-3PT
128.575
CLNC DEL
121.7
CTAF
122.7
GRAY DEP CON
120.075 323.15

**TOP ALTITUDE:
12000**

N



DEPARTURE ROUTE DESCRIPTION

Climb on assigned heading for RADAR vectors to CONRA INT, maintain 3500. Thence

. . . . (transition). Expect filed altitude 10 minutes after departure.

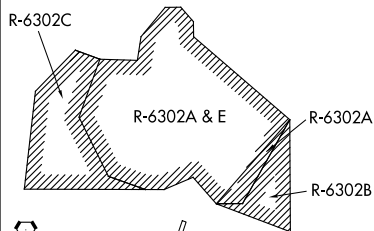
COLLEGE STATION TRANSITION (CONRA2.CLL): From over CONRA INT via CLL R-287 to CLL VORTAC.

LEONA TRANSITION (CONRA2.LOA): From over CONRA INT via LOA R-257 to LOA VORTAC.

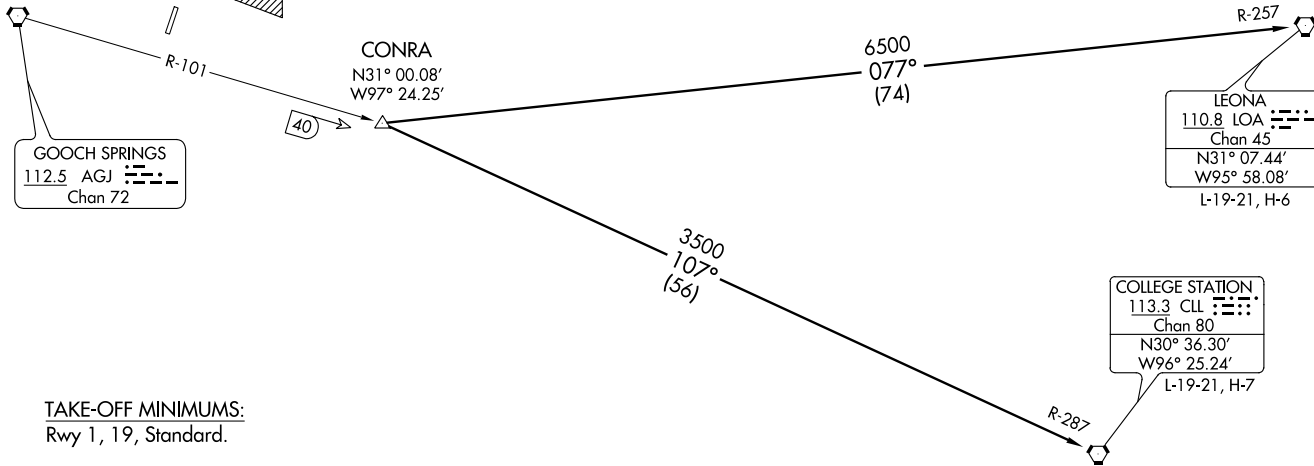
(CONRA2, CONRA) 201 98
CONRA TWO DEPARTURE

AL-5344 (FAA)

SKYLARK FIELD (11E)
KILLEEN, TEXAS



NOTE: RADAR Required.



GOOCH SPRINGS
112.5 AGJ
Chan 72

CONRA
N31° 00.08'
W97° 24.25'

6500
077°
(74)

LEONA
110.8 LOA
Chan 45
N31° 07.44'
W95° 58.08'
L-19-21, H-6

3500
107°
(56)

COLLEGE STATION
113.3 CLL
Chan 80
N30° 36.30'
W96° 25.24'
L-19-21, H-7

TAKE-OFF MINIMUMS:
Rwy 1, 19, Standard.

NOTE: Chart not to scale.

SKYLARK FIELD (11E)
KILLEEN, TEXAS

LAMP5 SEVEN DEPARTURE

AWOS-3PT
128.575
GRAY DEP CON
120.075 323.15
CLNC DEL
121.7

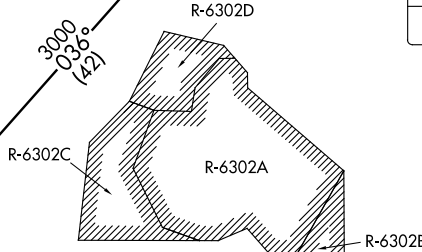
**TOP ALTITUDE:
ASSIGNED BY ATC**

SONET
N31° 42.75'
W97° 36.29'

2700
091°
(17)

R-271

WACO
115.3 ACT
Chan 100
N31° 39.74'
W97° 16.14'
L-19, H-6



GOOCH SPRINGS
112.5 AGJ
Chan 72
N31° 11.13'
W98° 08.51'

STONEWALL
113.8 STV
Chan 85
N30° 12.41'
W98° 42.35'
L-19, H-7



TAKEOFF MINIMUMS
Rwy 1, 19: Standard.

NOTE: RADAR required.
NOTE: WACO TRANSITION for aircraft inbound to terminal area airports.

NOTE: Chart not to scale.

DEPARTURE ROUTE DESCRIPTION

TAKEOFF RWY 1: Climbing right turn heading 300° (to assigned altitude) to intercept and proceed on AGJ R-098. Thence

TAKEOFF RWY 19: Climbing right turn heading 330° (to assigned altitude) to intercept and proceed on AGJ R-098. Thence

. . . . on (transition) or (assigned route).

STONEWALL TRANSITION (LAMP57.STV): From over AGJ VORTAC on AGJ R-202 and STV R-018 to STV VORTAC.

WACO TRANSITION (LAMP57.ACT): From over AGJ VORTAC on AGJ R-036 to SONET INT, then on ACT R-271 to ACT VORTAC.

LAMP5 SEVEN DEPARTURE

(LAMP57.AGJ) 10OCT19

SC-3, 03 DEC 2020 to 31 DEC 2020

SC-3, 03 DEC 2020 to 31 DEC 2020