

WAAS CH <b>58039</b> <b>W11A</b>	APP CRS <b>106°</b>	Rwy Idg <b>5502</b> TDZE <b>1400</b> Apt Elev <b>1419</b>
--	------------------------	---

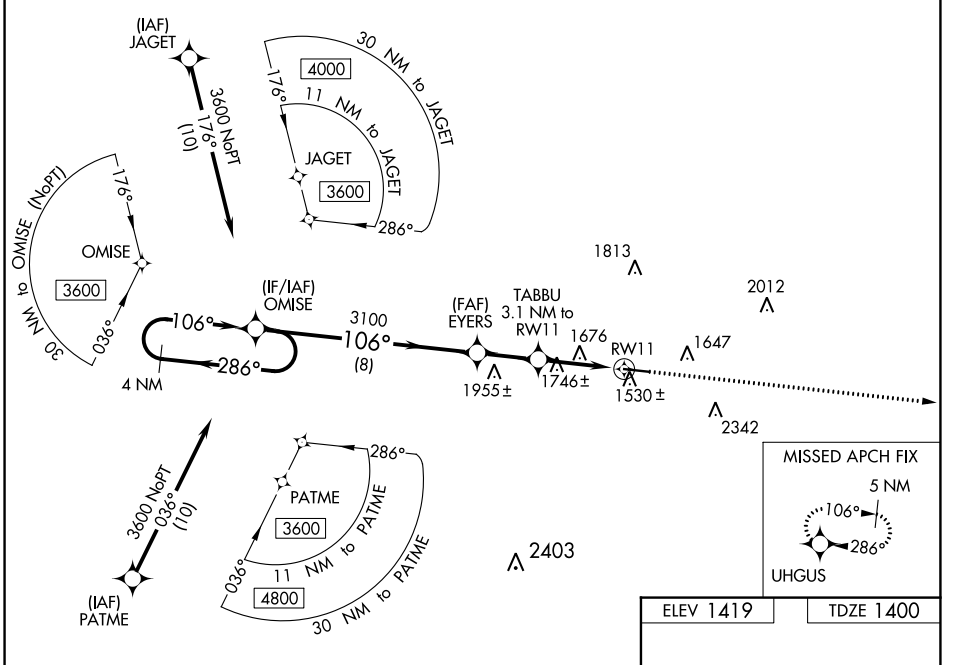
# RNAV (GPS) RWY 11

INDIANA COUNTY/JIMMY STEWART FLD (IDI)

**⚠** For uncompensated Baro-VNAV systems, LNAV/VNAV NA below -17°C (2°F) or above 54°C (130°F).  
**⚠** Baro-VNAV and VDP NA when using Allegheny County altimeter setting. DME/DME RNP-0.3 NA. Rwy 11 helicopter visibility reduction below ¾ SM NA. When local altimeter setting not received, use Allegheny County altimeter setting and increase LPV DA to 2026 feet and LNAV/VNAV DA to 2156 feet; increase visibility LPV all Cats to 2 ½ SM and LNAV/VNAV all Cats to 3 SM. Increase all MDA 120 feet and all Cat A and B visibility to 1 ¼ SM and LNAV Cat C and D visibility to 2 ½ SM.

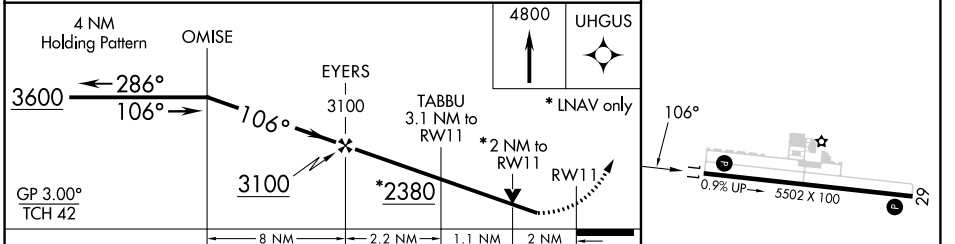
MISSED APPROACH:  
Climb to 4800 direct UHGUS and hold.

AWOS-3 <b>126.625</b>	JOHNSTOWN APP CON * <b>121.2 299.2</b>	UNICOM <b>122.8 (CTAF) 0</b>
--------------------------	---	---------------------------------



NE-4, 22 FEB 2024 to 21 MAR 2024

NE-4, 22 FEB 2024 to 21 MAR 2024



CATEGORY	A	B	C	D
LPV DA	1907-1¾		507 (500-1¾)	
LNAV/VNAV DA	2037-2½		637 (700-2½)	
LNAV MDA	2060-1	660 (700-1)	2060-1⅞	660 (700-1⅞)
<b>C</b> CIRCLING	2120-1 701 (800-1)	2180-1 761 (800-1)	2660-3	1241 (1300-3)

ELEV 1419	TDZE 1400
-----------	-----------

\*LNAV only

REIL Rwy 11 0  
HIRL Rwy 11-29 0

WAAS CH <b>97539</b> <b>W29A</b>	APP CRS <b>286°</b>	Rwy Idg TDZE <b>1419</b> Apt Elev <b>1419</b>	<b>5502</b>
--	------------------------	---	-------------

# RNAV (GPS) RWY 29

INDIANA COUNTY/JIMMY STEWART FLD (IDI)

### RNP APCH - GPS

**▼** Baro-VNAV and VDP NA when using Allegheny County altimeter setting. For uncompensated Baro-VNAV systems, LNAV/VNAV NA below -17°C or above 54°C. Rwy 29 helicopter visibility reduction below 3/4 SM NA. When local altimeter setting not received, use Allegheny County altimeter setting and increase LPV DA to 1874 feet and all visibilities 3/4 SM. Increase LNAV/VNAV DA to 2099 feet and all visibilities 1/4 SM. Increase all MDAs 120 feet and LNAV visibility Cat C/D 3/4 SM, and Circling visibility Cat A/B 1/4 SM.

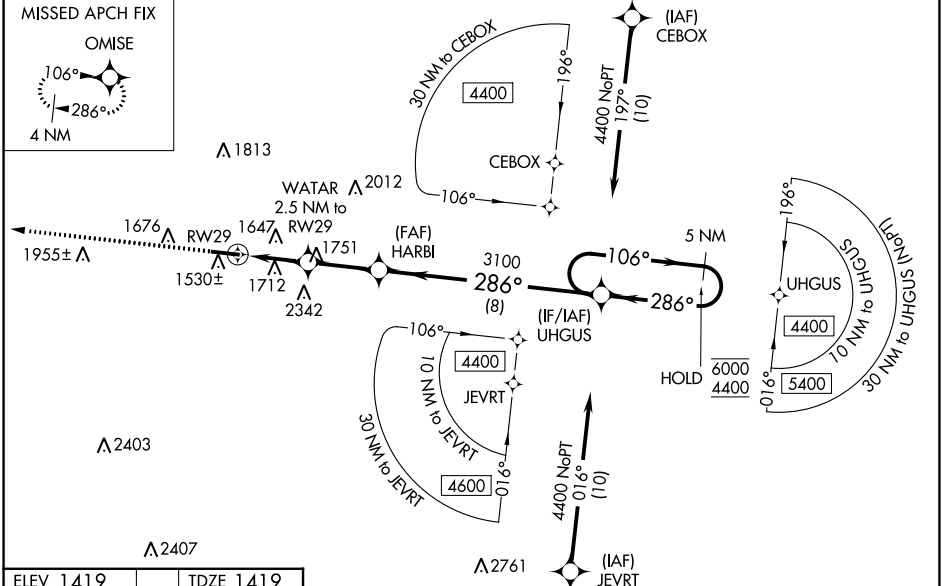
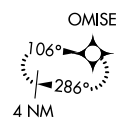
**MISSED APPROACH:**  
Climb to 3600 direct OMISE and hold.

AWOS-3  
**126.625**

JOHNSTOWN APP CON \*  
**121.2 299.2**

UNICOM  
**122.8 (CTAF) 0**

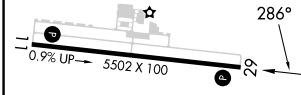
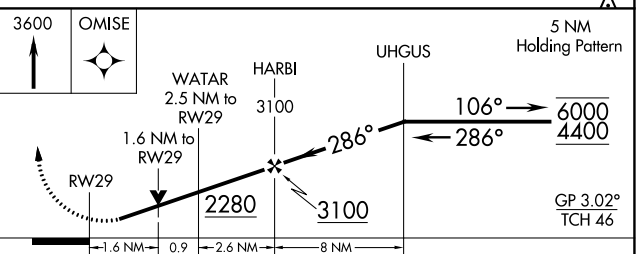
### MISSED APCH FIX



NE-4, 22 FEB 2024 to 21 MAR 2024

NE-4, 22 FEB 2024 to 21 MAR 2024

ELEV 1419	TDZE 1419
-----------	-----------



CATEGORY	A	B	C	D
LPV DA		1755-1	336 (400-1)	
LNAV/VNAV DA		1980-1 1/2	561 (600-1 1/2)	
LNAV MDA	1980-1	561 (600-1)	1980-1 1/2	561 (600-1 1/2)
CIRCLING	2120-1 701 (800-1)	2180-1 761 (800-1)	2660-3	1241 (1300-3)

REIL Rwy 11 **0**  
HIRL Rwy 11-29 **0**

# RNAV (GPS) RWY 29