


LOC I-IAG <b>110.1</b>	APP CRS <b>280°</b>	Rwy ldg TDZE Apt Elev	<b>9129</b> <b>588</b> <b>592</b>
---------------------------	------------------------	-----------------------------	---

# ILS Y or LOC Y RWY 28R

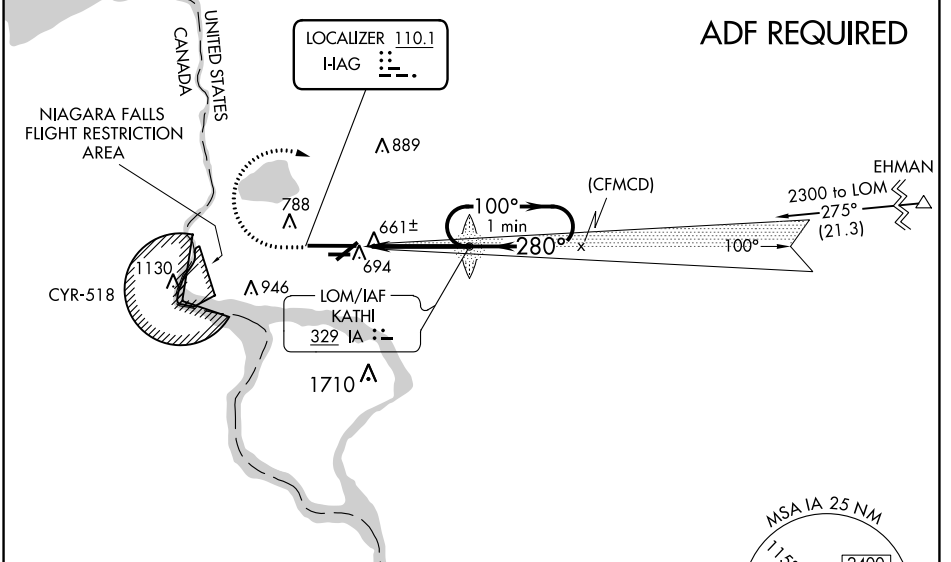
NIAGARA FALLS INTL (IAG)

**⚠ ADF Required.** When local altimeter setting not received, use Buffalo Niagara Intl altimeter setting and increase all DA 51 feet and all MDA 60 feet; increase Circling Cat C and D visibility 1/4 SM. For inop MALSRS, increase S-ILS 28R all Cats visibility to RVR 4500 and S-LOC 28R all Cats visibility to RVR 5000. For inop MALSRS when using Buffalo Niagara Intl altimeter setting, increase S-ILS 28R all Cats visibility to RVR 4500, S-LOC 28R Cats A/B visibility to RVR 5000, and S-LOC 28R Cats C/D visibility to RVR 6000. Rwy 28R helicopter visibility reduction below 3/4 SM NA. Rwy 6, 10R, 24, 28L helicopter visibility reduction below 1 SM NA. Circling Rwy 6, 10R, 24, 28L NA at night.

**MALSRS**  


**MISSED APPROACH:**  
Climb to 1200 then climbing right turn to 3200 on heading 050° then direct KATHI LOM and hold.

ATIS <b>120.8 269.4</b>	BUFFALO APP CON <b>126.5 317.6</b>	NIAGARA TOWER* <b>118.5 (CTAF) 0 349.0</b>	GND CON <b>125.3 275.8</b>	CLNC DEL <b>119.25 251.1</b>	UNICOM <b>122.95</b>
----------------------------	---------------------------------------	---	-------------------------------	---------------------------------	-------------------------




ELEV 592	<b>D</b>	TDZE 588
----------	----------	----------

TDZ/CL Rwy 28R **Ⓛ**  
REIL Rws 6, 10R, 24, and 28L **Ⓛ**  
HIRL Rwy 10L-28R **Ⓛ**  
MIRL Rws 6-24 and 10R-28L **Ⓛ**

FAF to MAP 4.1 NM

Knots	60	90	120	150	180
Min:Sec	4:06	2:44	2:03	1:38	1:22

1200	3200	IA	IA LOM	1763	One Minute Holding Pattern
↑	hdg 050°		1763	100° → 2200	GS 2.50° TCH 67
280°		280°		2000	4.1 NM
CATEGORY	A	B	C	D	
S-ILS 28R		838/40	250 (300-3/4)		
S-LOC 28R		920/40	332 (400-3/4)		
<b>C</b> CIRCLING	1100-1	508 (600-1)	1280-2 688 (700-2)	1280-2 1/4 688 (700-2 1/4)	

NE-2, 22 FEB 2024 to 21 MAR 2024

NE-2, 22 FEB 2024 to 21 MAR 2024

LOC I-IAG <b>110.1</b>	APP CRS <b>280°</b>	Rwy ldg TDZE Apt Elev	<b>9129</b> <b>588</b> <b>592</b>
---------------------------	------------------------	-----------------------------	---

# ILS Z or LOC Z RWY 28R

NIAGARA FALLS INTL (IAG)

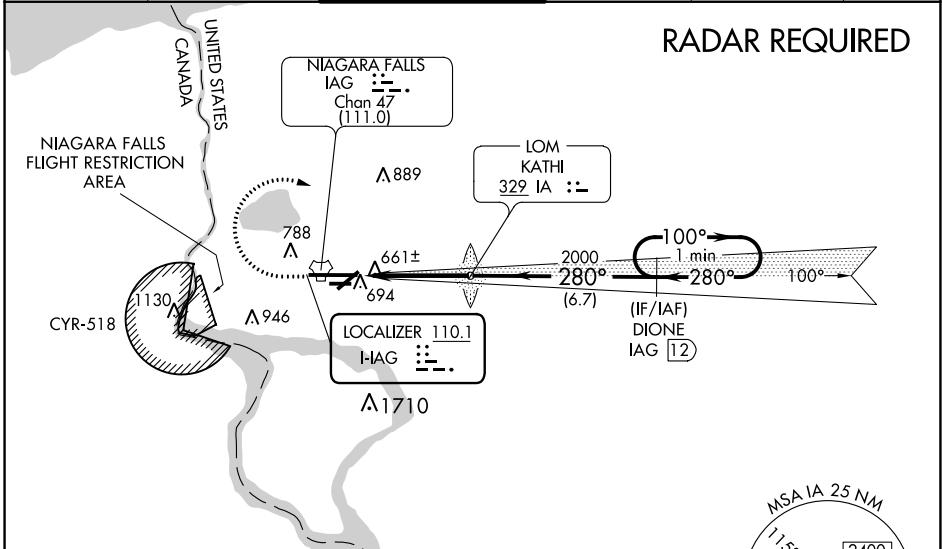
**⚠** When local altimeter setting not received, use Buffalo Niagara Intl altimeter setting and increase all DA 51 feet and all MDA 60 feet; increase Circling Cat C and D visibility ¼ SM. For inop MALSRL, increase S-ILS 28R all Cats visibility to RVR 4500 and S-LOC 28R all Cats visibility to RVR 5000. For inop MALSRL when using Buffalo Niagara Intl altimeter setting, increase S-ILS 28R all Cats visibility to RVR 4500, S-LOC 28R Cats A/B visibility to RVR 5000, and S-LOC 28R Cats C/D visibility to RVR 6000. DME required. Rwy 28R helicopter visibility reduction below ¾ SM NA. Rwy 6, 10R, 24, 28L, helicopter visibility reduction below 1 SM NA. Circling Rwy 6, 10R, 24, 28L NA at night.

MALSRL



MISSED APPROACH: Climb to 1200 then climbing right turn to 3200 on heading 120° and I-RG E course to DIONE/IAG 12 DME and hold.

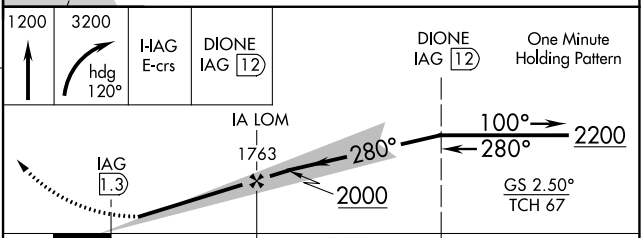
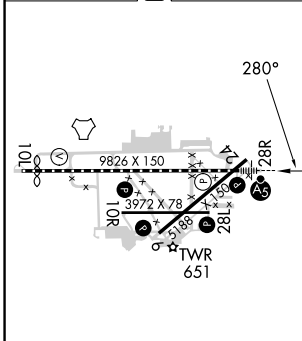
ATIS <b>120.8 269.4</b>	BUFFALO APP CON <b>126.5 317.6</b>	NIAGARA TOWER★ <b>118.5 (CTAF) 0 349.0</b>	GND CON <b>125.3 275.8</b>	CLNC DEL <b>119.25 251.1</b>	UNICOM <b>122.95</b>
----------------------------	---------------------------------------	---	-------------------------------	---------------------------------	-------------------------



NE-2, 22 FEB 2024 to 21 MAR 2024

NE-2, 22 FEB 2024 to 21 MAR 2024

ELEV 592	<b>D</b>	TDZE 588
----------	----------	----------



CATEGORY	A	B	C	D
S-ILS 28R		838/40	250 (300-¾)	
S-LOC 28R		920/40	332 (400-¾)	
<b>C</b> CIRCLING	1100-1	508 (600-1)	1280-2 688 (700-2)	1280-2¼ 688 (700-2¼)

TDZ/CL Rwy 28R **Ⓛ**  
 REIL Rwys 6, 10R, 24, and 28L **Ⓛ**  
 HIRL Rwy 10L-28R **Ⓛ**  
 MIRL Rwys 6-24 and 10R-28L **Ⓛ**


# ILS Z or LOC Z RWY 28R

LOM IA	APP CRS	Rwy ldg	<b>9129</b>
<b>329</b>	<b>280°</b>	TDZE	<b>588</b>
		Apt Elev	<b>592</b>

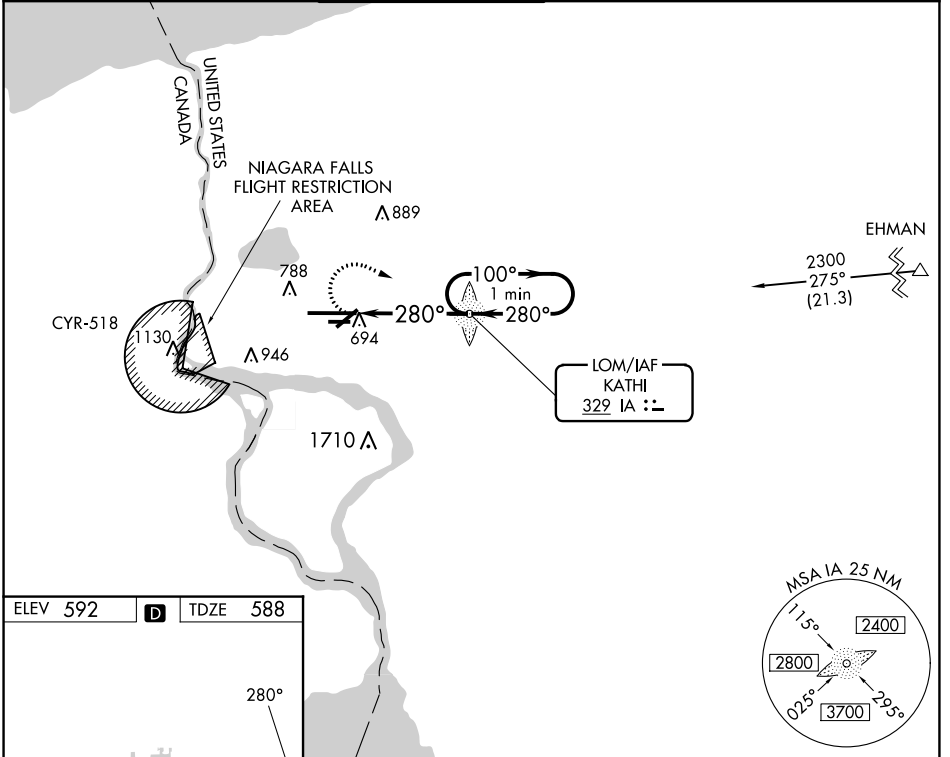
# NDB RWY 28R

NIAGARA FALLS INTL (IAG)

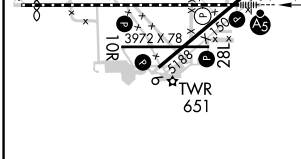
**⚠** When local altimeter setting not received, use Buffalo Niagara Intl altimeter setting and increase all MDA 60 feet, increase S-28R Cat C and D visibility 1/4 SM and Circling Cat C and D 1/4 SM. For inop MALSRR, increase S-28R Cats A/B visibility to RVR 5500 and Cats C/D visibility to 1 1/2. For inop MALSRR when using Buffalo Niagara Intl altimeter setting, increase S-28R Cats C/D visibility to 1 1/2. Rwy 28R helicopter visibility reduction below 1/4 SM NA. Rwy 6, 10R, 24, 28L helicopter visibility reduction below 1 SM NA. Circling Rwy 6, 10R, 24, 28L NA at night.

**MALSRR**  
  
**MISSED APPROACH:**  
 Climbing right turn to 3200 direct KATHI LOM and hold, continue climb-in-hold to 3200.

ATIS	BUFFALO APP CON	NIAGARA TOWER★	GND CON	CLNC DEL	UNICOM
<b>120.8 269.4</b>	<b>126.5 317.6</b>	<b>118.5 (CTAF) 349.0</b>	<b>125.3 275.8</b>	<b>119.25 251.1</b>	<b>122.95</b>



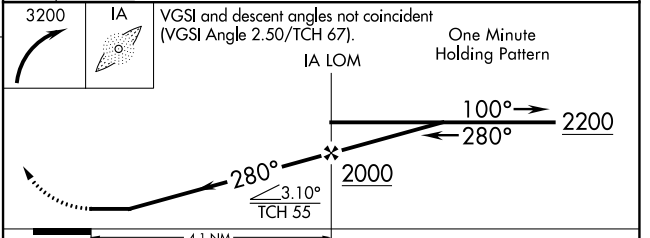
ELEV 592	<b>D</b>	TDZE 588
----------	----------	----------



TDZ/CL Rwy 28R **1**  
 REIL Rws 6, 10R, 24, and 28L **1**  
 HIRL Rwy 10L-28R **1**  
 MIRL Rws 6-24 and 10R-28L **1**

FAF to MAP 4.1 NM

Knots	60	90	120	150	180
Min:Sec	4:06	2:44	2:03	1:38	1:22



CATEGORY	A	B	C	D
S-28R	1200/40	612 (700-3/4)	1200-1 1/2	612 (700-1 1/2)
<b>C</b> CIRCLING	1200-1	608 (700-1)	1280-2 688 (700-2)	1280-2 1/4 688 (700-2 1/4)

NE-2, 22 FEB 2024 to 21 MAR 2024

NE-2, 22 FEB 2024 to 21 MAR 2024

WAAS CH <b>66034</b> <b>W10A</b>	APP CRS <b>120°</b>	Rwy ldg TDZE <b>589</b> Apt Elev <b>592</b>
--	------------------------	---

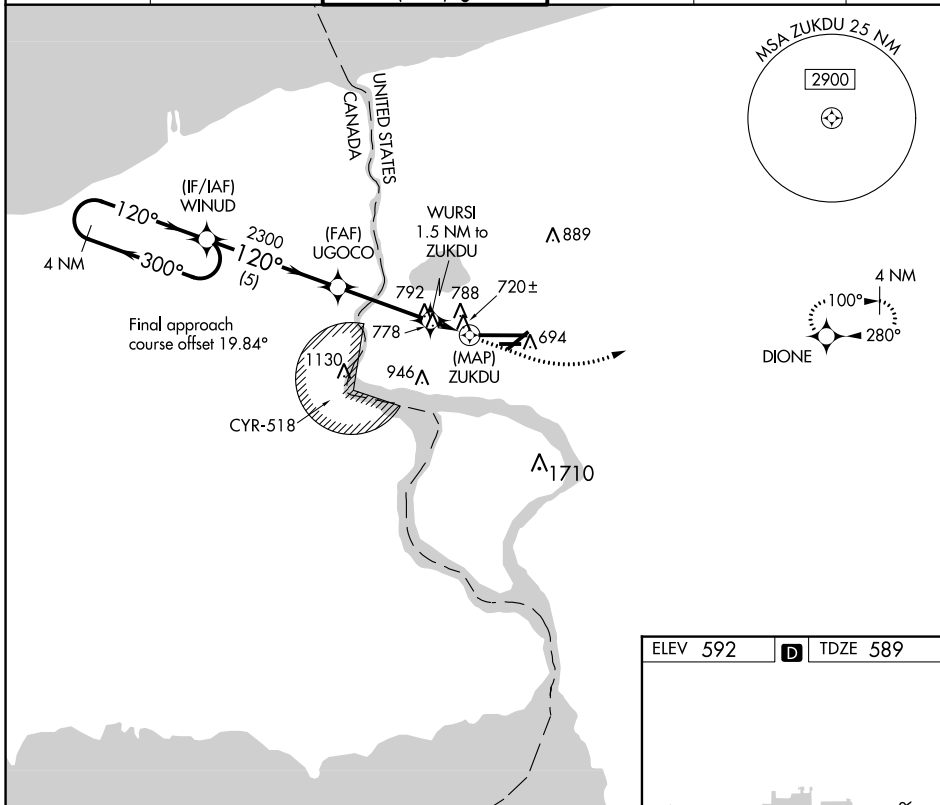
# RNAV (GPS) RWY 10L

NIAGARA FALLS INTL (IAG)

**⚠** DME/DME RNP-0.3 NA. VDP NA with Buffalo Niagara Intl altimeter setting. When local altimeter setting not received, use Buffalo Niagara Intl altimeter setting and increase all MDA 60 feet.  
**⚠** Increase LP Cats C/D and Circling Cats C/D visibility ¼ mile. Rwy 10L helicopter visibility reduction below ¾ SM NA. Rwy 6, 10R, 24, 28L helicopter visibility reduction below 1 SM NA. Circling Rwy 6, 10R, 24, 28L NA at night.

**MISSED APPROACH:** Climb to 1100 then climbing left turn to 3600 direct DIONE and hold.

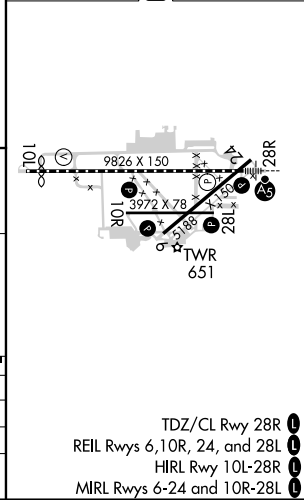
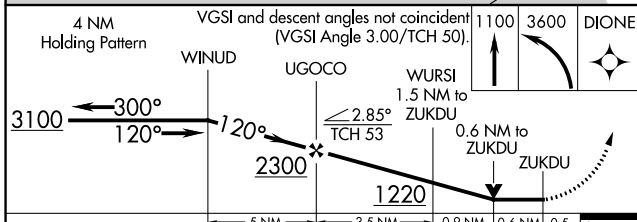
ATIS <b>120.8 269.4</b>	BUFFALO APP CON <b>126.5 317.6</b>	NIAGARA TOWER ★ <b>118.5 (CTAF) 0 349.0</b>	GND CON <b>125.3 275.8</b>	CLNC DEL <b>119.25 251.1</b>	UNICOM <b>122.95</b>
----------------------------	---------------------------------------	--	-------------------------------	---------------------------------	-------------------------



NE-2, 22 FEB 2024 to 21 MAR 2024

NE-2, 22 FEB 2024 to 21 MAR 2024

ELEV 592	<b>D</b>	TDZE 589
----------	----------	----------



CATEGORY	A	B	C	D
LP MDA	980-1	391 (400-1)	980-1½	391 (400-1½)
LNAV MDA	1040-1	451 (500-1)	1040-1¾	451 (500-1¾)
<b>C</b> CIRCLING	1100-1	508 (600-1)	1280-2 688 (700-2)	1280-2¼ 688 (700-2¼)


TDZ/CL Rwy 28R **1**  
 REIL Rws 6, 10R, 24, and 28L **1**  
 HIRL Rwy 10L-28R **1**  
 MRL Rws 6-24 and 10R-28L **1**

WAAS CH <b>99432</b> <b>W28B</b>	APP CRS <b>280°</b>	Rwy ldg <b>9129</b> TDZE <b>588</b> Apt Elev <b>592</b>
--	------------------------	---

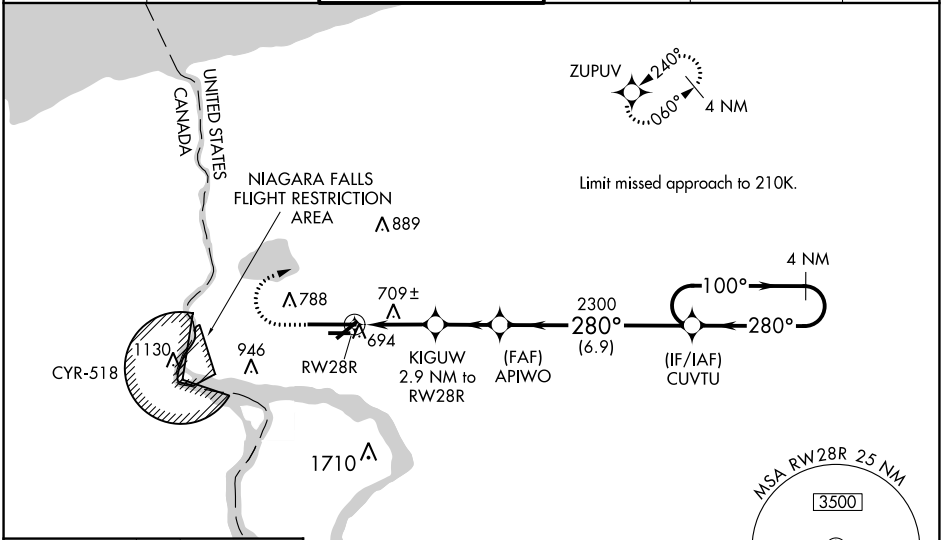
# RNAV (GPS) RWY 28R

NIAGARA FALLS INTL (IAG)

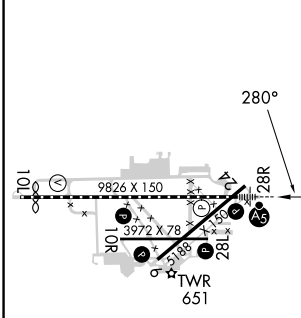
**⚠** For uncompensated Baro-VNAV systems, LNAV/VNAV NA below -18°C (0°F) or above 54°C (130°F). DME/DME RNP-0.3 NA. When local altimeter setting not received, use Buffalo Niagara Intl altimeter setting and increase all DA 51 feet and all MDA 60 feet; increase LNAV/VNAV all Cats visibility  $\frac{1}{8}$  SM and Circling Cat C and D  $\frac{1}{4}$  SM. Baro-VNAV and VDP NA with Buffalo Niagara Intl altimeter setting. For inop MALSAR increase LNAV/VNAV visibility all Cats to RVR 6000 and LNAV all Cats visibility to RVR 5500. For inop MALSAR when using Buffalo Niagara Intl altimeter setting, increase LPV all Cats and LNAV C/D visibility to RVR 5500 and LNAV/VNAV all Cats visibility to RVR 6000. Rwy 28R helicopter visibility reduction below  $\frac{3}{4}$  SM NA. Rwy 6, 10R, 24, 28L, 28R, helicopter visibility reduction below 1 SM NA. Circling Rwy 6, 10R, 24, 28L, NA at night.

**MALSAR**  
  
**MISSED APPROACH:**  
 Climb to 1040 then climbing right turn to 3600 direct ZUPUV and hold, continue climb-in-hold to 3600.

ATIS <b>120.8 269.4</b>	BUFFALO APP CON <b>126.5 317.6</b>	<b>NIAGARA TOWER*</b> <b>118.5 (CTAF) 0 349.0</b>	GND CON <b>125.3 275.8</b>	CLNC DEL <b>119.25 251.1</b>	UNICOM <b>122.95</b>
----------------------------	---------------------------------------	--	-------------------------------	---------------------------------	-------------------------



ELEV <b>592</b>	<b>D</b>	TDZE <b>588</b>
-----------------	----------	-----------------



CATEGORY	A	B	C	D
LPV DA		838/40	250 (300- $\frac{3}{4}$ )	
LNAV/VNAV DA		957/40	369 (400- $\frac{3}{4}$ )	
LNAV MDA		960/40	372 (400- $\frac{3}{4}$ )	
<b>C</b> CIRCLING	1100-1	508 (600-1)	1280-2 688 (700-2)	1280-2 $\frac{1}{4}$ 688 (700-2 $\frac{1}{4}$ )

TDZ/CL Rwy 28R **Ⓛ**  
 REIL Rws 6,10R, 24, and 28L **Ⓛ**  
 HIRL Rwy 10L-28R **Ⓛ**  
 MIRL Rws 6-24 and 10R-28L **Ⓛ**

NE-2, 22 FEB 2024 to 21 MAR 2024

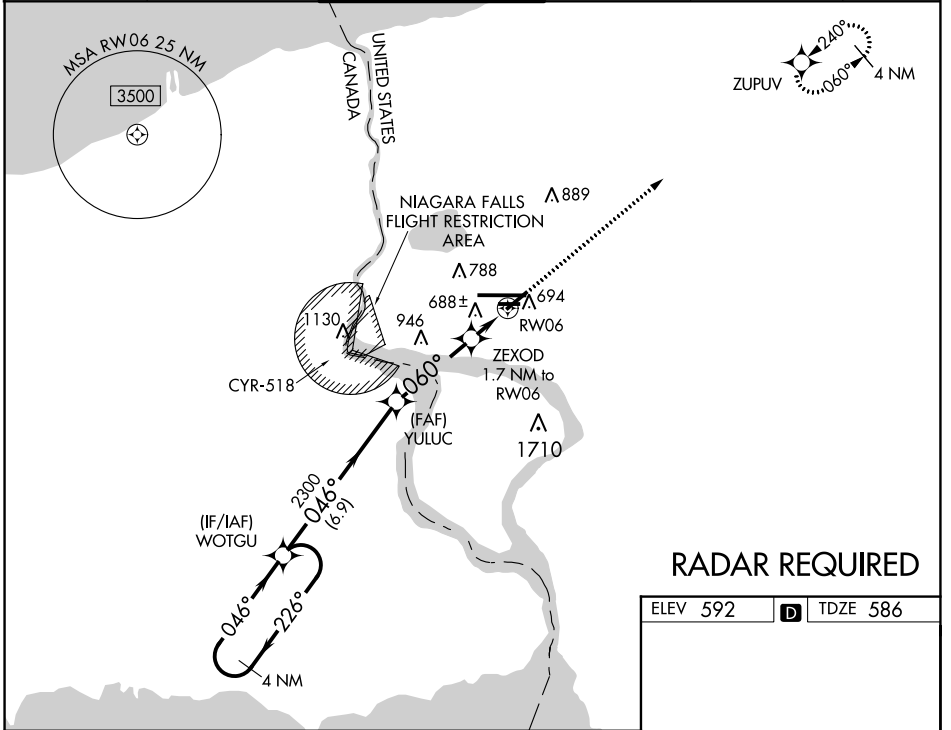
NE-2, 22 FEB 2024 to 21 MAR 2024

WAAS CH <b>90132</b> <b>W06A</b>	APP CRS <b>060°</b>	Rwy ldg TDZE Apt Elev	<b>5188</b> <b>586</b> <b>592</b>
--	------------------------	-----------------------------	---

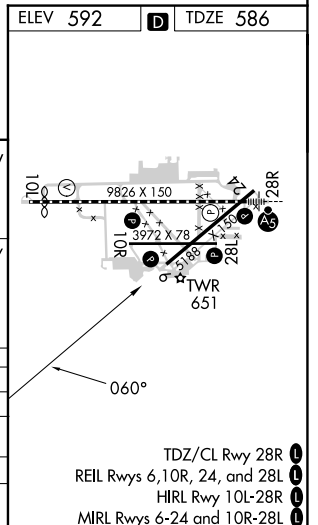
# RNAV (GPS) RWY 6

NIAGARA FALLS INTL (IAG)

RNP APCH		<p>Baro-VNAV NA when using Buffalo Niagara Intl altimeter setting. For uncompensated Baro-VNAV systems, LNAV/VNAV NA below -18°C (0°F) or above 54°C (130°F). When local altimeter setting not received, use Buffalo Niagara Intl altimeter setting and increase all DA 51 feet and all MDA 60 feet, increase LNAV Cat C and D visibility 1/8 SM and Circling Cat C and D 1/4 SM. Rwy 6, 10R, 24, 28L helicopter visibility reduction below 1 SM NA. Straight-in Rwy 6 NA at night, Circling Rwy 6, 10R, 24, 28L NA at night.</p>				MISSED APPROACH: Climb to 3600 direct ZUPOV and hold.	
ATIS <b>120.8 269.4</b>	BUFFALO APP CON <b>126.5 317.6</b>	NIAGARA TOWER* <b>118.5 (CTAF) 0 349.0</b>	GND CON <b>125.3 275.8</b>	CLNC DEL <b>119.25 251.1</b>	UNICOM <b>122.95</b>		



## RADAR REQUIRED



4 NM Holding Pattern	VGSi and RNAV glidepath not coincident (VGSi Angle 3.00/TCH 45).			3600 ZUPOV
GP 3.00° TCH 55	WOTGU	YULUC	ZEXOD	RW06
	←226° / 046°→	046°	*060°	*1180
	6.9 NM	3.5 NM	1.7 NM	
CATEGORY	A	B	C	D
LPV DA		864-1	278 (300-1)	
LNAV/VNAV DA		849-1	263 (300-1)	
LNAV MDA		940-1	354 (400-1)	
CIRCLING	1100-1	508 (600-1)	1280-2 688 (700-2)	1280-2 1/4 688 (700-2 1/4)

NE-2, 22 FEB 2024 to 21 MAR 2024

NE-2, 22 FEB 2024 to 21 MAR 2024

WAAS CH <b>97333</b> <b>W24B</b>	APP CRS <b>240°</b>	Rwy ldg TDZE Apt Elev	<b>5108</b> <b>592</b> <b>592</b>
--	------------------------	-----------------------------	---

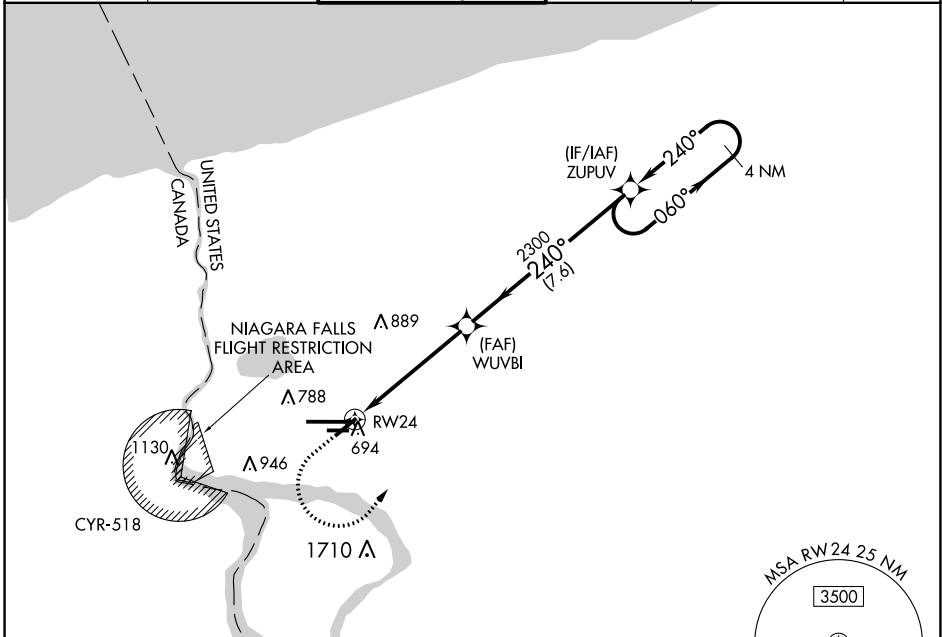
# RNAV (GPS) Y RWY 24

NIAGARA FALLS INTL (IAG)

**▽** DME/DME RNP-0.3 NA. When local altimeter setting not received, use Buffalo Niagara Intl altimeter setting and increase all MDA 60 feet and increase LP Cats C and D visibility 1/8 mile and Circling Cats A and D visibility 1/4 mile. Rwy 6, 10R, 24, 28L helicopter visibility reduction below 1 SM NA. Straight-in Rwy 24 NA at night, Circling Rwy 6, 10R, 24, 28L NA at night.

**▲** MISSED APPROACH: Climb to 1400 then climbing left turn to 3600 direct ZUPOV and hold.

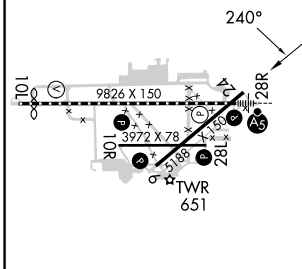
ATIS <b>120.8 269.4</b>	BUFFALO APP CON <b>126.5 317.6</b>	NIAGARA TOWER★ <b>118.5 (CTAF) 0 349.0</b>	GND CON <b>125.3 275.8</b>	CLNC DEL <b>119.25 251.1</b>	UNICOM <b>122.95</b>
----------------------------	---------------------------------------	---	-------------------------------	---------------------------------	-------------------------



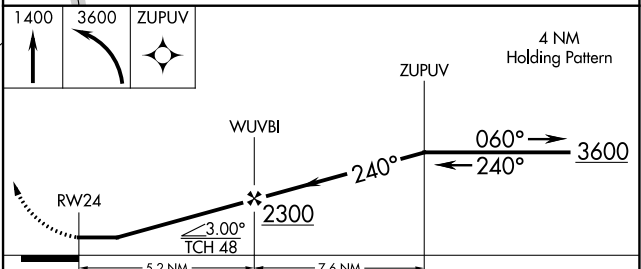
NE-2, 22 FEB 2024 to 21 MAR 2024

NE-2, 22 FEB 2024 to 21 MAR 2024

ELEV 592	<b>D</b>	TDZE 592
----------	----------	----------



## RADAR REQUIRED



CATEGORY		A	B	C	D
LP	MDA	1180-1	588 (600-1)	1180-1 3/4	588 (600-1 3/4)
LN	NAV MDA	1360-1 768 (800-1)	1360-1 1/4 768 (800-1 1/4)	1360-2 1/2	768 (800-2 1/2)
	<b>C</b> CIRCLING	1360-1 768 (800-1)	1360-1 1/4 768 (800-1 1/4)	1360-2 1/2	768 (800-2 1/2)

WAAS CH <b>45532</b> <b>W24A</b>	APP CRS <b>240°</b>	Rwy ldg TDZE Apt Elev	<b>5108</b> <b>592</b> <b>592</b>
--	------------------------	-----------------------------	---

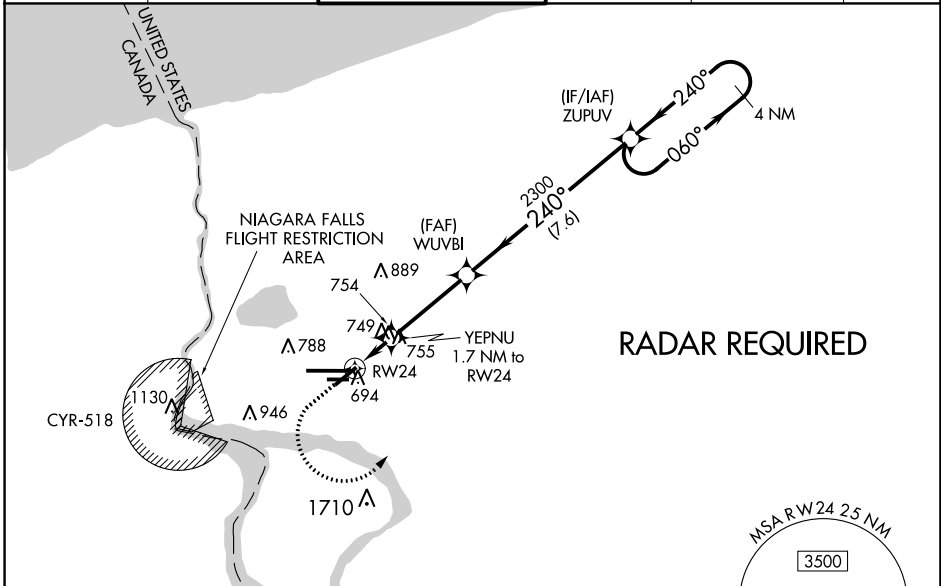
# RNAV (GPS) Z RWY 24

NIAGARA FALLS INTL (IAG)

**⚠ DME/DME RNP-0.3 NA.** When local altimeter setting not received, use Buffalo Niagara Intl altimeter setting and increase all MDA 60 feet; increase LP Cats C and D visibility 1/4 SM, LNAV Cats C and D visibility 1/4 SM, and Circling Cat C and D visibility 1/4 SM.  
**⚠ Rwy 6, 10R, 24, 28L helicopter visibility reduction below 1 SM NA.** Straight-in Rwy 24 NA at night, Circling Rwy 6, 10R, 24, 28L NA at night. \*Missed approach requires a minimum climb of 265 feet per NM to 2120; if unable to meet climb gradient, see RNAV (GPS) Y RWY 24.

**MISSED APPROACH:** Climb to 1400 then climbing left turn to 3600 direct ZUPUV and hold.

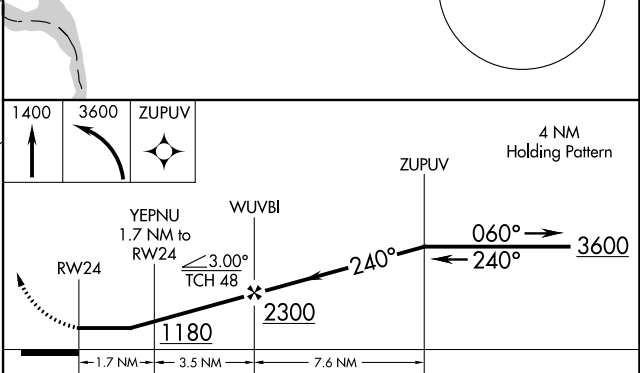
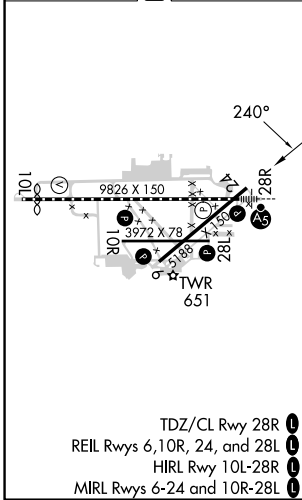
ATIS <b>120.8 269.4</b>	BUFFALO APP CON <b>126.5 317.6</b>	NIAGARA TOWER* <b>118.5 (CTAF) 0 349.0</b>	GND CON <b>125.3 275.8</b>	CLNC DEL <b>119.25 251.1</b>	UNICOM <b>122.95</b>
----------------------------	---------------------------------------	---	-------------------------------	---------------------------------	-------------------------



NE-2, 22 FEB 2024 to 21 MAR 2024

NE-2, 22 FEB 2024 to 21 MAR 2024

ELEV 592	<b>D</b>	TDZE 592
----------	----------	----------



CATEGORY	A	B	C	D
LP MDA*	1000-1	408 (500-1)	1000-1 1/8	408 (500-1 1/8)
LNAV MDA*	1020-1	428 (500-1)	1020-1 1/4	428 (500-1 1/4)
<b>C</b> CIRCLING	1100-1	508 (600-1)	1280-2 688 (700-2)	1280-2 1/4 688 (700-2 1/4)



TACAN IAG Chan <b>47</b> (111.0)	APP CRS <b>286°</b>	Rwy Idg TDZE Apt Elev	<b>9129</b> <b>588</b> <b>592</b>
--	------------------------	-----------------------------	---

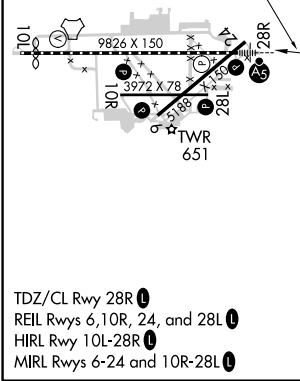
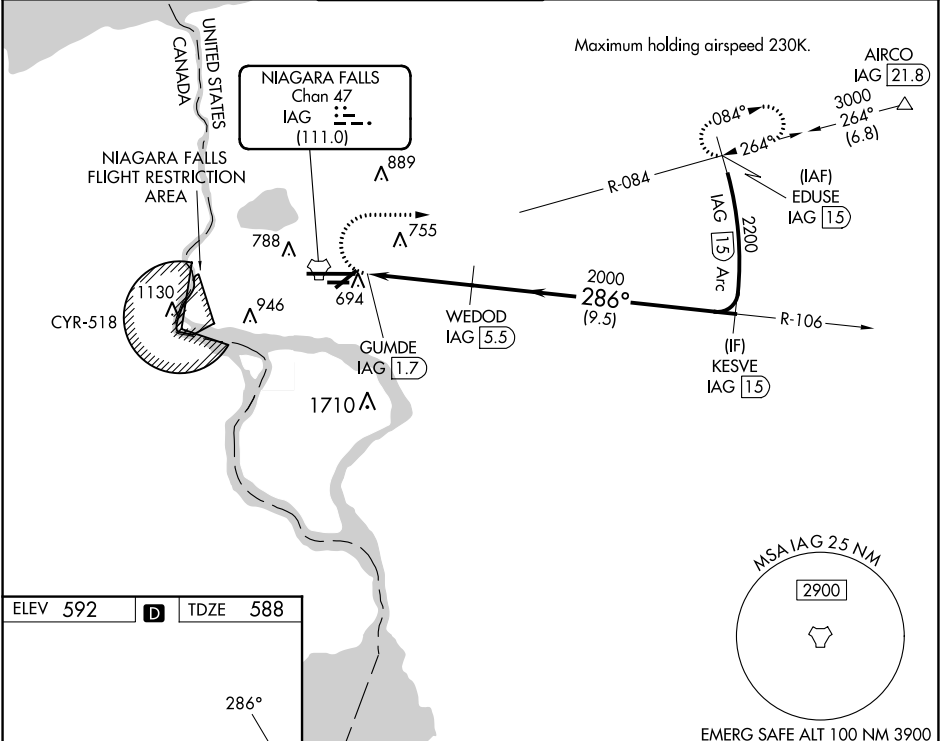
# TACAN RWY 28R

NIAGARA FALLS INTL (IAG)

▼ When local altimeter setting not received, use Buffalo Niagara Intl altimeter setting; increase all MDA 60 feet and S-28R visibility Cat C, D and E to RVR 4500 and Circling Cat C, D and E visibility ¼ SM. Circling NA for Cat E south of Rwy 10L-28R.  
 ▲ For inop MALSR, increase S-28R Cat A/B visibility to RVR 5000 and Cat C/D/E to RVR 6000. Rwy 28R helicopter visibility reduction below ¾ SM NA. Rwy 6, 10R, 24, 28L helicopter visibility reduction below 1 SM NA. Circling Rwy 6, 10R, 24, 28L NA at night.

MALSRL  
 MALSR  
 MISSED APPROACH:  
 Climbing right turn to 3000 on heading 100° and IAG R-084 to EDUSE/IAG 15 DME and hold.

ATIS <b>120.8 269.4</b>	BUFFALO APP CON <b>126.5 317.6</b>	NIAGARA TOWER★ <b>118.5 (CTAF) 349.0</b>	GND CON <b>125.3 275.8</b>	CLNC DEL <b>119.25 251.1</b>	UNICOM <b>122.95</b>
----------------------------	---------------------------------------	---	-------------------------------	---------------------------------	-------------------------



3000	hdg 100°	IAG R-084	EDUSE IAG 15	VGSI and descent angles not coincident (VGSI Angle 2.50/TCH 67).	KESVE IAG 15
2000	IAG TACAN	GUMDE IAG 1.7	WEDOD IAG 5.5	TCH 55	2200
0.5 NM		3.8 NM		9.5 NM	
CATEGORY	A	B	C	D	E
S-28R	1000/40 412 (500-¾)				
CIRCLING	1100-1	508 (600-1)	1280-2 688 (700-2)	1360-2½ 768 (800-2½)	1360-2¾ 768 (800-2¾)

NE-2, 22 FEB 2024 to 21 MAR 2024

NE-2, 22 FEB 2024 to 21 MAR 2024