

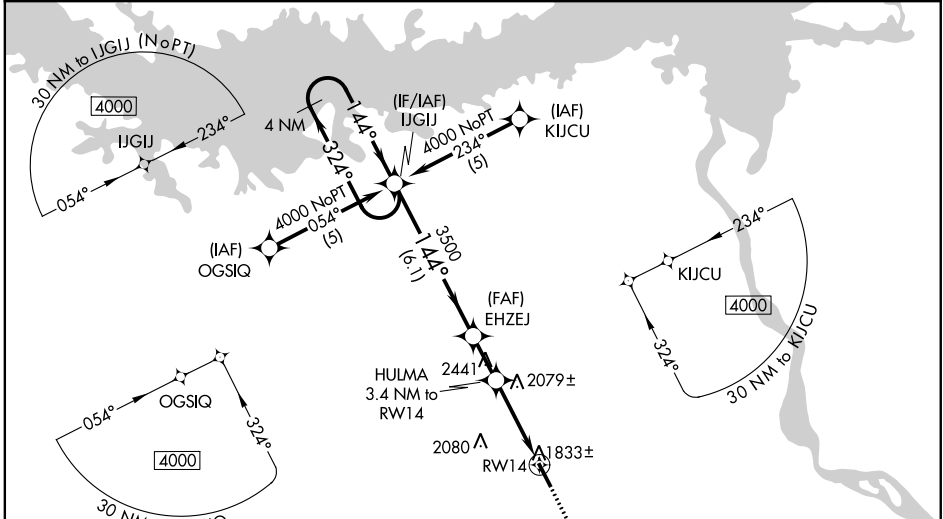
WAAS CH 48818 W14A	APP CRS 144°	Rwy Idg 4999 TDZE 1787 Apt Elev 1814
--	------------------------	---

RNAV (GPS) RWY 14

MERCER COUNTY RGNL (HZE)

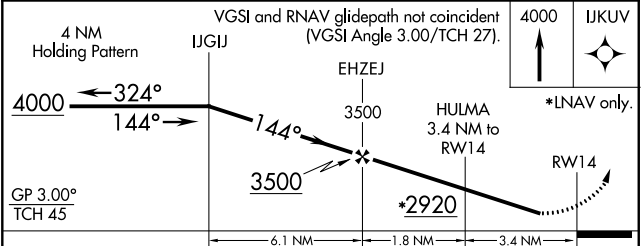
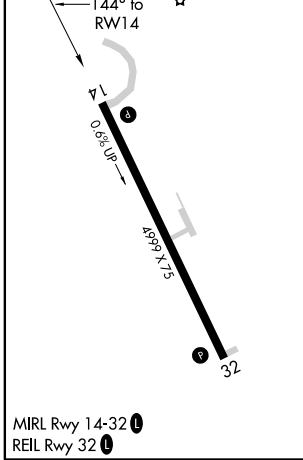
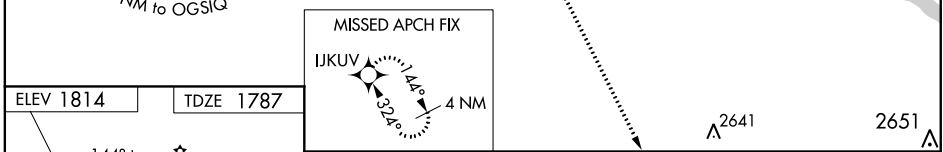
RNP APCH.	When local altimeter setting not received, use Bismarck altimeter setting. Rwy 14 helicopter visibility reduction below 1 SM NA. For uncompensated Baro-VNAV systems, LNAV/VNAV NA below -18°C or above 54°C. Baro-VNAV NA when using Bismarck altimeter setting. When VGSI inoperative, procedure NA at night.	MISSED APPROACH: Climb to 4000 direct IKUV and hold.
-----------	---	---

AWOS-3PT 118.675	MINNEAPOLIS CENTER 124.25 236.825	UNICOM 122.8 (CTAF) 0
----------------------------	---	---------------------------------



NC-1, 09 SEP 2021 to 07 OCT 2021

NC-1, 09 SEP 2021 to 07 OCT 2021



CATEGORY	A	B	C	D
LPV DA	2165-1¼ 378 (400-1¼)			NA
LNAV/VNAV DA	2231-1½ 444 (500-1½)			NA
LNAV MDA	2460-1	673 (700-1)	2460-2 673 (700-2)	NA
CIRCLING	2460-1	646 (700-1)	2460-2 646 (700-2)	NA

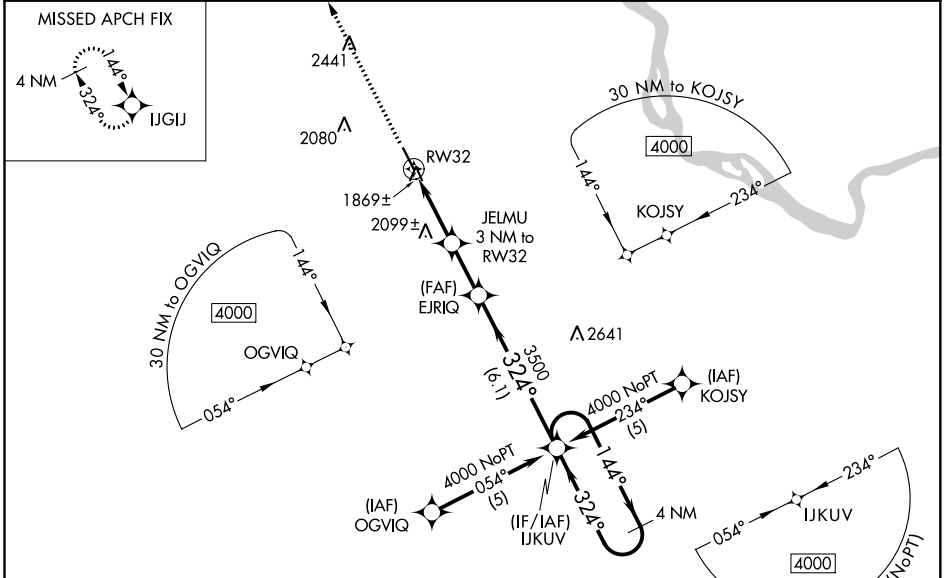
WAAS CH 53318 W32A	APP CRS 324°	Rwy Idg 4999 TDZE 1814 Apt Elev 1814
---------------------------------	------------------------	---

RNAV (GPS) RWY 32

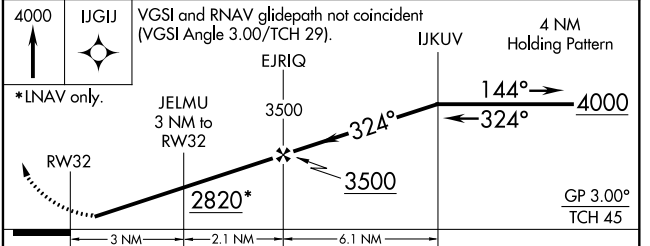
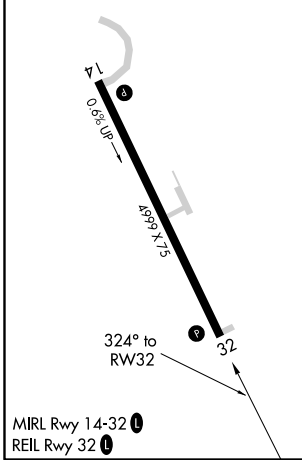
MERCER COUNTY RGNL (HZE)

RNP APCH.	When VGSI inoperative, procedure NA at night. Rwy 14 helicopter visibility reduction below 1 SM NA. When local altimeter setting not received, use Bismarck altimeter setting. For uncompensated Baro-VNAV systems, LNAV/VNAV NA below -18°C or above 54°C. Baro-VNAV NA when using Bismarck altimeter setting.	MISSED APPROACH: Climb to 4000 direct IJGIJ and hold.
-----------	---	---

AWOS-3PT 118.675	MINNEAPOLIS CENTER 124.25 236.825	UNICOM 122.8 (CTAF) 0
----------------------------	---	---------------------------------



ELEV 1814	TDZE 1814
------------------	------------------



CATEGORY	A	B	C	D
LPV DA	2192-1¼		378 (400-1¼)	NA
LNAV/VNAV DA	2352-2		538 (600-2)	NA
LNAV MDA	2480-1	666 (700-1)	2480-1¼ 666 (700-1¼)	NA
CIRCLING	2480-1	666 (700-1)	2480-1¼ 666 (700-1¼)	NA

NC-1, 09 SEP 2021 to 07 OCT 2021

NC-1, 09 SEP 2021 to 07 OCT 2021