

LOC/DME I-HRO	APP CRS	Rwy Idg	6161
111.7	359°	TDZE	1351
Chan 54		Apt Elev	1365

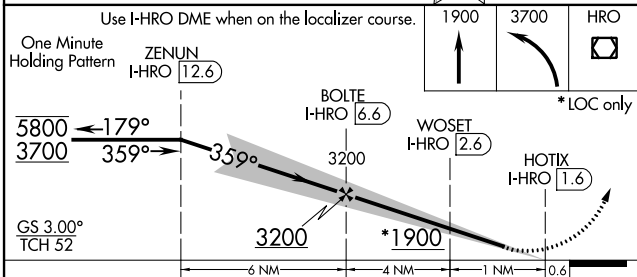
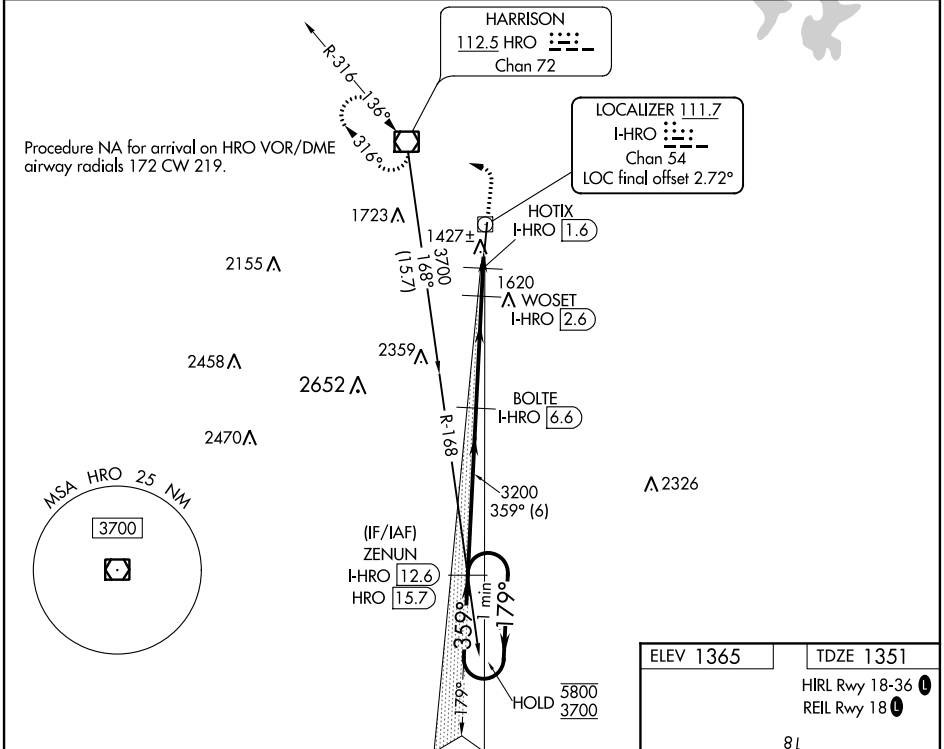
ILS or LOC RWY 36

BOONE COUNTY (HRO)

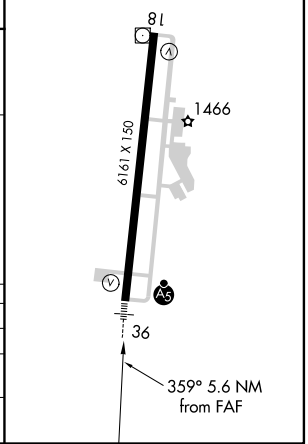
DME required for LOC only. DME or RADAR required for procedure entry.

MALSR MISSED APPROACH: Climb to 1900 then climbing left turn to 3700 direct HRO VOR/DME and hold, continue climb-in hold to 3700.

ASOS 121.125	MEMPHIS CENTER 126.85 281.55	UNICOM 123.0 (CTAF)
------------------------	--	-------------------------------



ELEV 1365	TDZE 1351
HIRL Rwy 18-36	REIL Rwy 18



CATEGORY	A	B	C	D
S-ILS 36		1601-1/2	250 (300-1/2)	
S-LOC 36		1680-1/2	329 (400-1/2)	
CIRCLING	1840-1 475 (500-1)	1860-1 495 (500-1)	2340-3 975 (1000-3)	2560-3 1195 (1200-3)

SC-1, 19 MAY 2022 to 16 JUN 2022

SC-1, 19 MAY 2022 to 16 JUN 2022

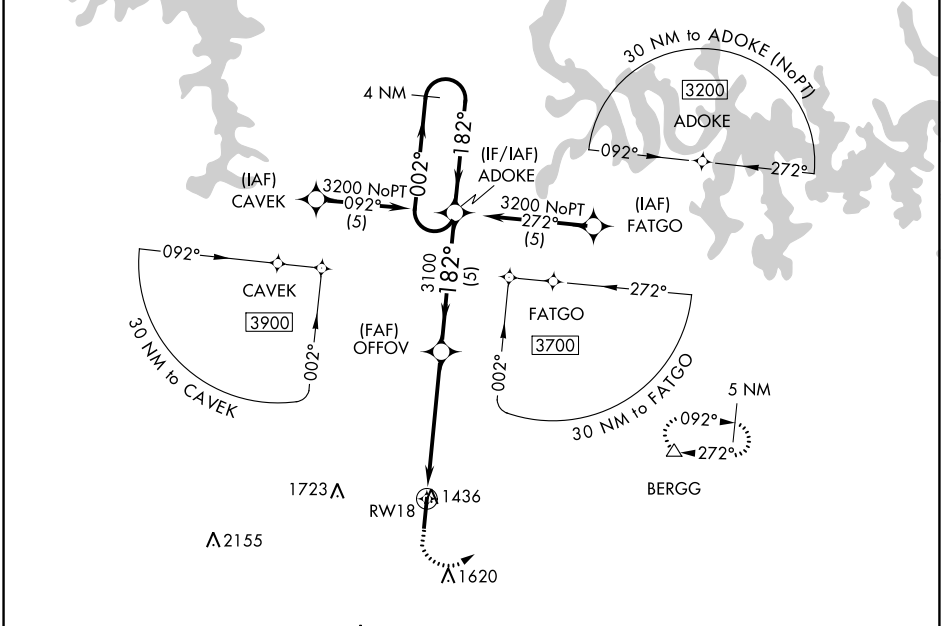
APP CRS	Rwy ldg	6161
182°	TDZE	1365
	Apt Elev	1365

RNAV (GPS) RWY 18

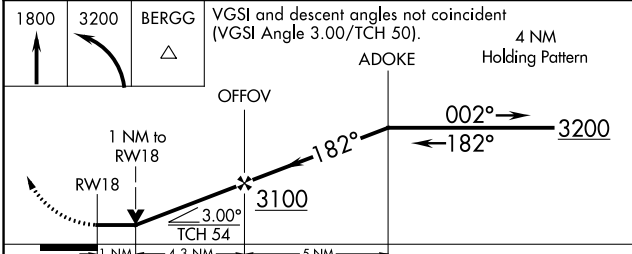
BOONE COUNTY (HRO)

RNP APCH.	MISSED APPROACH: Climb to 1800 then climbing left turn to 3200 direct BERGG and hold.
<p>▼</p> <p>▲</p>	Rwy 18 helicopter visibility reduction below 3/4 SM NA.

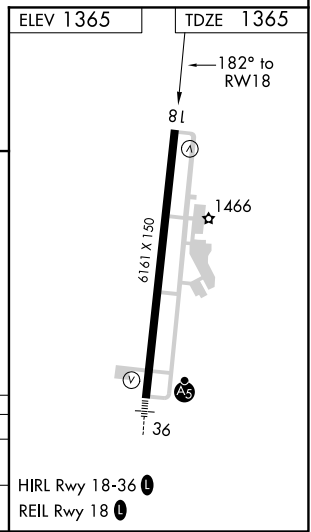
ASOS 121.125	MEMPHIS CENTER 126.85 281.55	UNICOM 123.0 (CTAF) 0
------------------------	--	---------------------------------



1800	3200	BERGG	VGSI and descent angles not coincident (VGSI Angle 3.00/TCH 50).
▲	▲	▲	



CATEGORY	A	B	C	D
LNAV MDA	1720-1 355 (400-1)			
CIRCLING	1840-1 475 (500-1)	1860-1 495 (500-1)	2340-3 975 (1000-3)	2560-3 1195 (1200-3)



SC-1, 19 MAY 2022 to 16 JUN 2022


SC-1, 19 MAY 2022 to 16 JUN 2022

WAAS CH 93711 W36A	APP CRS 002°	Rwy ldg 6161 TDZE 1351 Apt Elev 1365
--	------------------------	---

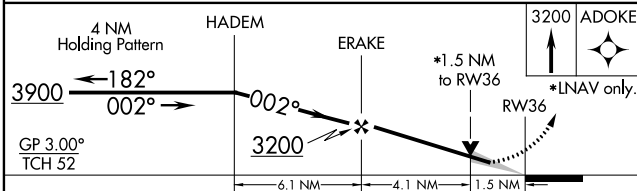
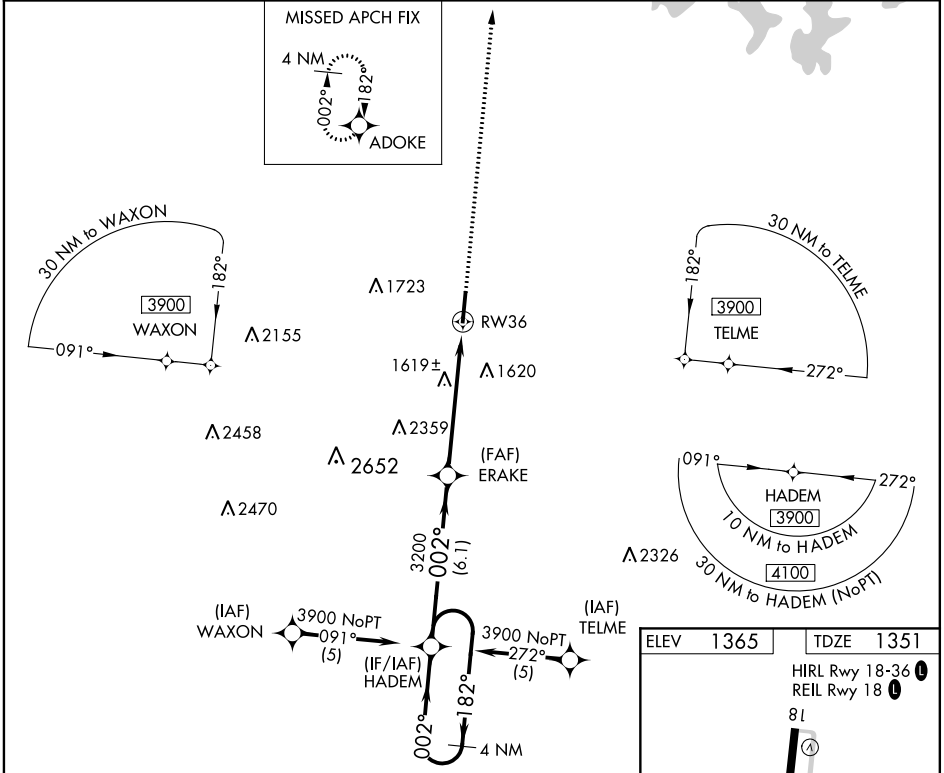
RNAV (GPS) RWY 36

BOONE COUNTY (HRO)

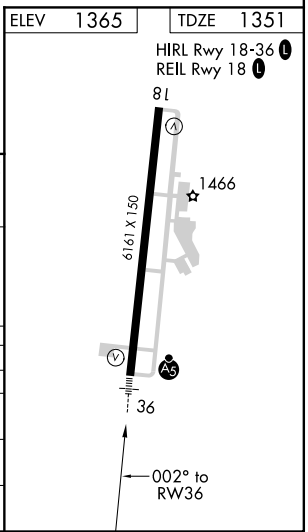
⚠ For uncompensated Baro-VNAV systems, LNAV/VNAV NA below -17°C (2°F) or above 46°C (114°F). DME/DME RNP-0.3 NA. VDP and Baro-VNAV NA when using Mountain Home altimeter setting. When local altimeter setting not received, use Mountain Home altimeter setting and increase all DA 139 feet and all MDA 140 feet, increase LPV all Cats and LNAV and Circling Cat C and D visibility ¼ mile, increase LNAV/VNAV all Cats visibility ½ mile. For inoperative MALSRS when using Mountain Home altimeter setting, increase LPV all Cats visibility to 1¼.

MALSRS  **MISSED APPROACH:** Climb to 3200 direct ADOKE and hold.

ASOS 121.125	MEMPHIS CENTER 126.85 281.55	UNICOM 123.0 (CTAF) 
------------------------	--	---



CATEGORY	A	B	C	D
LPV DA	1601-½ 250 (300-½)			
LNAV/VNAV DA	1815-1 464 (500-1)			
LNAV MDA	1880-½ 529 (600-½)		1880-1 529 (600-1)	
			1880-1¼ 529 (600-1¼)	
C CIRCLING	1880-1 515 (600-1)		2340-3 975 (1000-3)	
			2560-3 1195 (1200-3)	



SC-1, 19 MAY 2022 to 16 JUN 2022

SC-1, 19 MAY 2022 to 16 JUN 2022