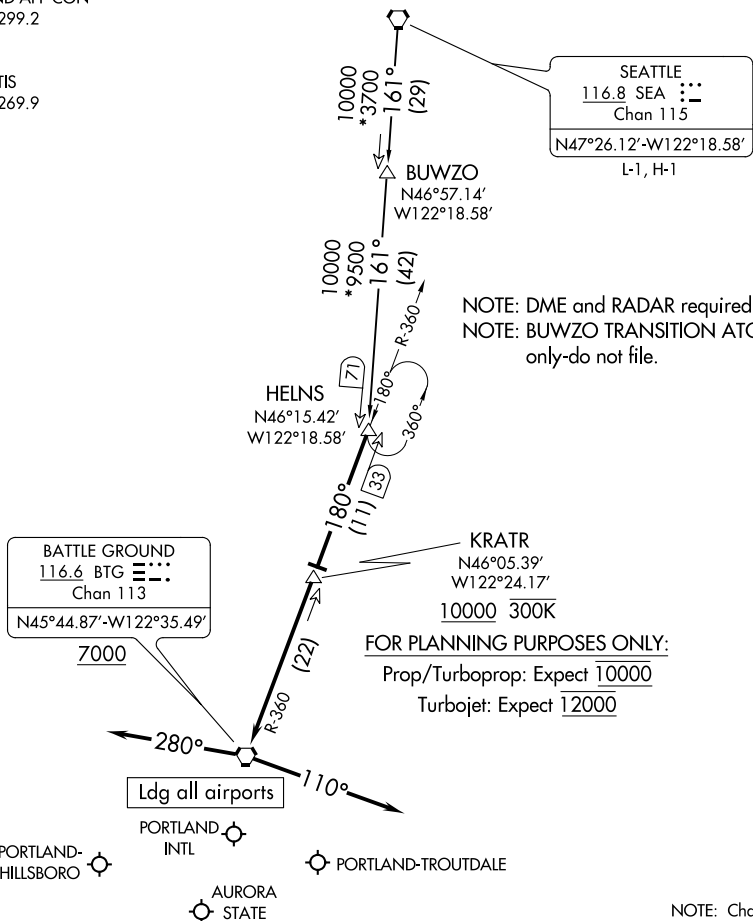


(HELNS.HELNS6) 20198
HELNS SIX ARRIVAL

AL-330 (FAA)

PORTLAND, OREGON

PORTLAND APP CON
 124.35 299.2
 HIO ATIS
 127.65
 PDX D-ATIS
 128.35 269.9



NOTE: DME and RADAR required.
 NOTE: BUWZO TRANSITION ATC assigned
 only-do not file.

FOR PLANNING PURPOSES ONLY:

Prop/Turboprop: Expect 10000
 Turbojet: Expect 12000

NOTE: Chart not to scale.

ARRIVAL ROUTE DESCRIPTION

BUWZO TRANSITION (BUWZO.HELNS6): From over BUWZO via SEA R-161 to HELNS. Thence. . . .

SEATTLE TRANSITION (SEA.HELNS6): From over SEA VORTAC via SEA R-161 to HELNS. Thence. . . .

. . . . from over HELNS on BTG VORTAC R-360 to cross KRATR at or above 10000, then as depicted to cross BTG VORTAC at or above 7000.

LANDING EAST: From BTG VORTAC heading 280°, expect RADAR vectors to final approach course.

LANDING WEST: From BTG VORTAC heading 110°, expect RADAR vectors to final approach course.

HELNS SIX ARRIVAL
 (HELNS.HELNS6) 29MAR18

PORTLAND, OREGON

NW-1, 12 AUG 2021 to 09 SEP 2021

NW-1, 12 AUG 2021 to 09 SEP 2021

OCITY THREE ARRIVAL

BATTLE GROUND
116.6 BTG $\equiv \equiv \equiv$
Chan 113
N45°44.87'-W122°35.49'

NEWBERG
117.4 UBG $\equiv \equiv \equiv$
Chan 121

VANTZ
N44°58.00'-W122°40.31'
250K

FOR PLANNING PURPOSES ONLY:
Prop/Turboprop: Expect 10000
Turbojet: Expect 12000

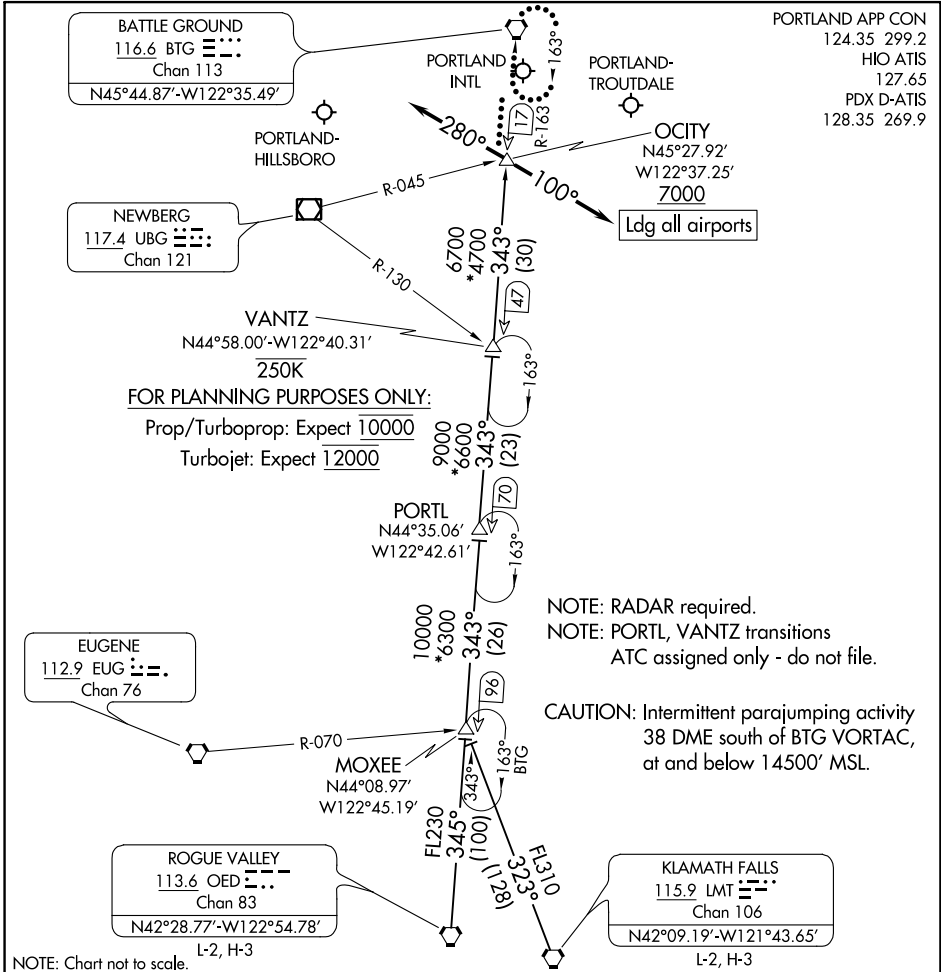
EUGENE
112.9 EUG $\equiv \equiv \equiv$
Chan 76

ROGUE VALLEY
113.6 OED $\equiv \equiv \equiv$
Chan 83
N42°28.77'-W122°54.78'

KLAMATH FALLS
115.9 LMT $\equiv \equiv \equiv$
Chan 106
N42°09.19'-W121°43.65'

AL-330 (FAA)

PORTLAND APP CON
124.35 299.2
HIO ATIS
127.65
PDX D-ATIS
128.35 269.9



NOTE: RADAR required.
NOTE: PORTL, VANTZ transitions
ATC assigned only - do not file.

CAUTION: Intermittent parajumping activity
38 DME south of BTG VORTAC,
at and below 14500' MSL.

NOTE: Chart not to scale.

ARRIVAL ROUTE DESCRIPTION

KLAMATH FALLS TRANSITION (LMT.OCITY3): From over LMT VORTAC on LMT R-323 to MOXEE, then on BTG R-163 to OCITY. Thence. . .

MOXEE TRANSITION (MOXEE.OCITY3): From over MOXEE on BTG R-163 to OCITY. Thence. . .

ROGUE VALLEY TRANSITION (OED.OCITY3): From over OED VORTAC on OED R-345 to MOXEE, then on BTG R-163 to OCITY. Thence. . .

PORTL TRANSITION (PORTL.OCITY3): From over PORTL on BTG R-163 to OCITY. Thence. . .

VANTZ TRANSITION (VANTZ.OCITY3): From over VANTZ on BTG R-163 to OCITY. Thence. . .

LANDING EAST: From OCITY heading 280°, expect RADAR vectors to final approach course.

LANDING WEST: From OCITY heading 100°, expect RADAR vectors to final approach course.

LOST COMMUNICATIONS: After OCITY, proceed direct BTG VORTAC and hold.

OCITY THREE ARRIVAL