

LOC I-HIO 110.7	APP CRS 128°	Rwy Idg TDZE Apt Elev	6600 203 208
---------------------------	------------------------	-----------------------------	---

ILS or LOC RWY 13R

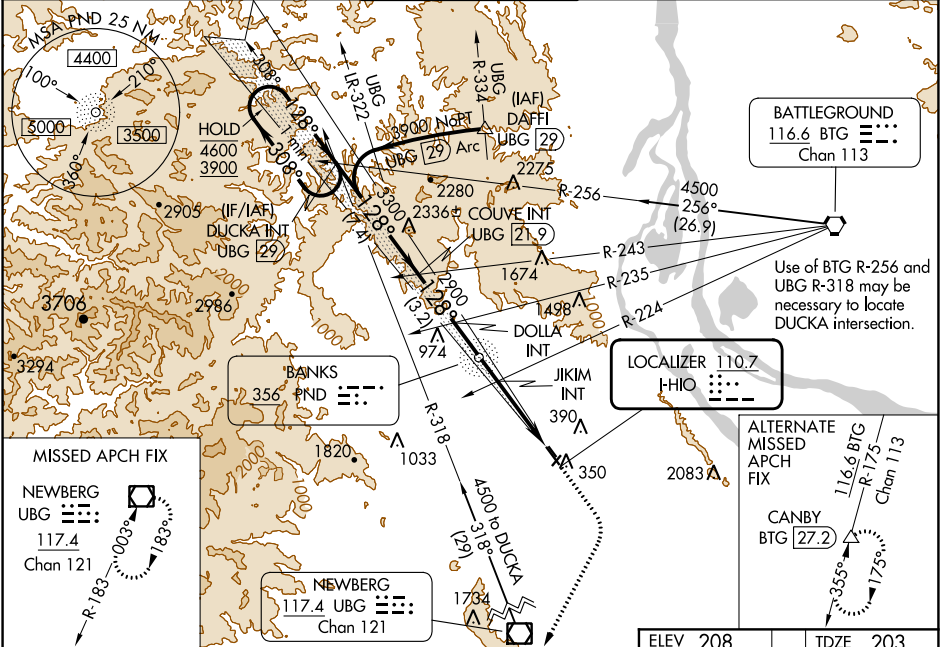
PORTLAND-HILLSBORO (HIO)

⚠ Circling to Rwy 13L, 31R NA at night. Inop table does not apply to S-LOC Rwy 13R all Cats. For inop ALS, increase JIKIM fix minimums Cat C/D visibility to 1 3/8 SM.

MALSR
AS

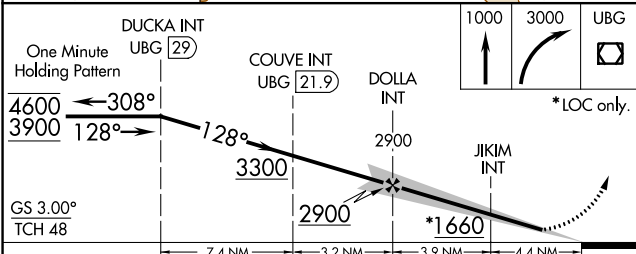
MISSED APPROACH: Climb to 1000 then climbing right turn to 3000 direct UBG VOR/DME and hold. Continue climb-in-hold to 3000.

ATIS 127.65	PORTLAND APP CON 126.0 269.175	HILLSBORO TOWER * 119.3 (CTAF) 239.3	GND CON 121.7	UNICOM 122.95
-----------------------	--	--	-------------------------	-------------------------

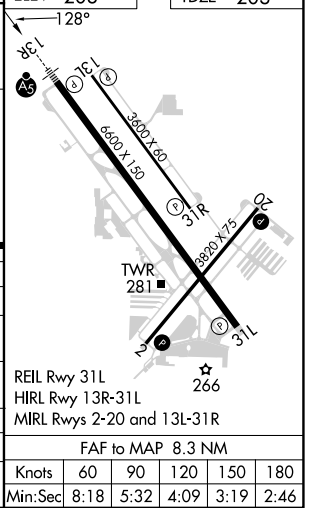


NW-1, 22 FEB 2024 to 21 MAR 2024

NW-1, 22 FEB 2024 to 21 MAR 2024



CATEGORY	A	B	C	D
S-ILS 13R	403/24 200 (200-1/2)			
S-LOC 13R	1660/60 1457 (1500-1 1/4)	1660-1 1/2 1457 (1500-1 1/2)	1660-3 1457 (1500-3)	
C CIRCLING	1660-1 1/4 1452 (1500-1 1/4)	1660-1 1/2 1452 (1500-1 1/2)	1660-3 1452 (1500-3)	
JIKIM FIX MINIMUMS (DUAL VOR RECEIVERS REQUIRED)				
S-LOC 13R	680/24 477 (500-1/2)	680/50 477 (500-1)		
C CIRCLING	680-1 472 (500-1)	720-1 512 (600-1)	720-1 1/2 512 (600-1 1/2)	980-2 1/2 772 (800-2 1/2)



PND NDB 356	APP CRS 127°	Rwy Idg TDZE Apt Elev	N/A N/A 208
-----------------------	------------------------	-----------------------------	--

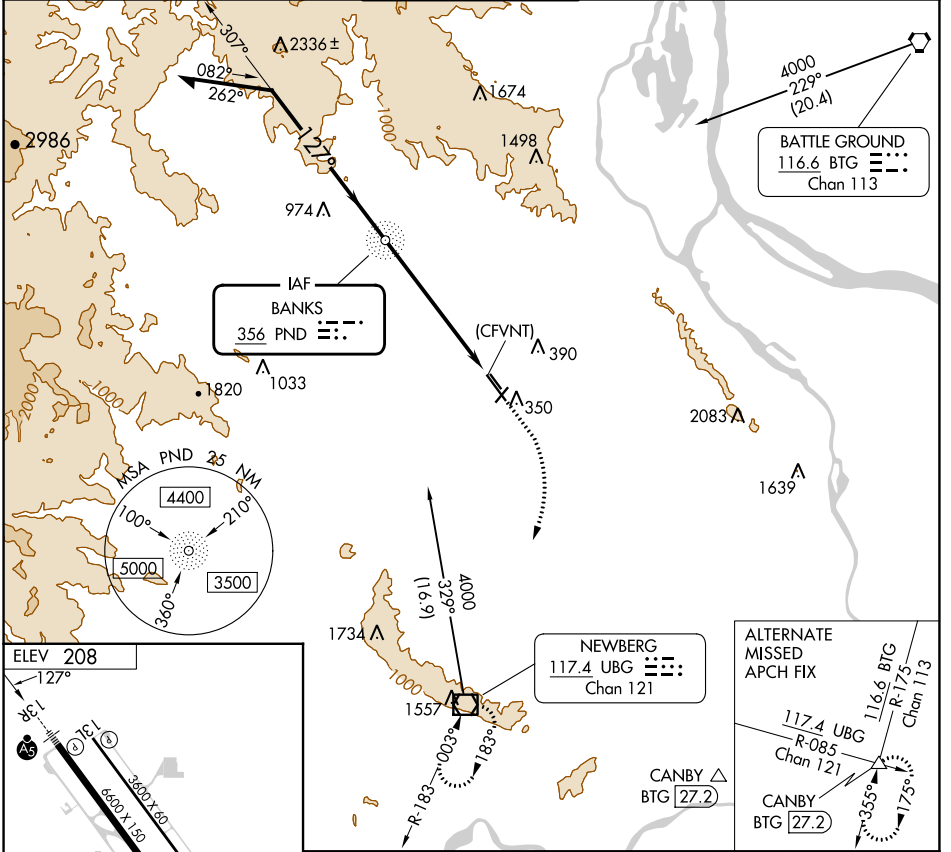
NDB-B

PORTLAND-HILLSBORO (HIO)

NA Circling to Rwy 13L, 31R NA at night.

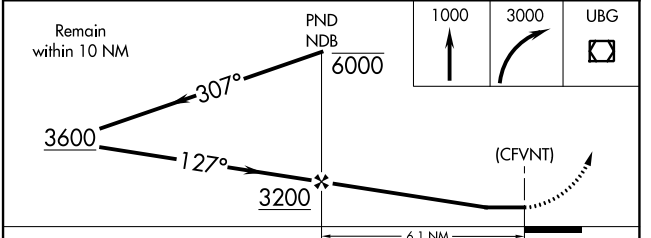
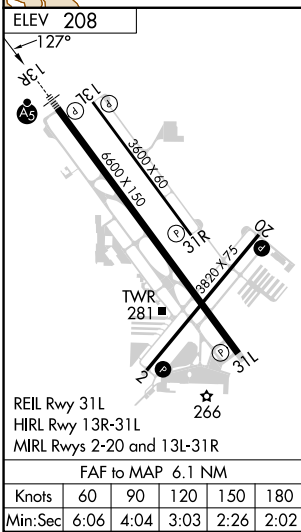
MISSED APPROACH: Climb to 1000 then climbing right turn to 3000 direct UBG VOR/DME and hold.

ATIS 127.65	PORTLAND APP CON 126.0 269.175	HILLSBORO TOWER ★ 119.3 (CTAF) 239.3	GND CON 121.7	UNICOM 122.95
-----------------------	--	--	-------------------------	-------------------------



NW-1, 22 FEB 2024 to 21 MAR 2024

NW-1, 22 FEB 2024 to 21 MAR 2024



CATEGORY	A	B	C	D
CIRCLING	960-1	752 (800-1)	960-2¼ 752 (800-2¼)	980-2½ 772 (800-2½)

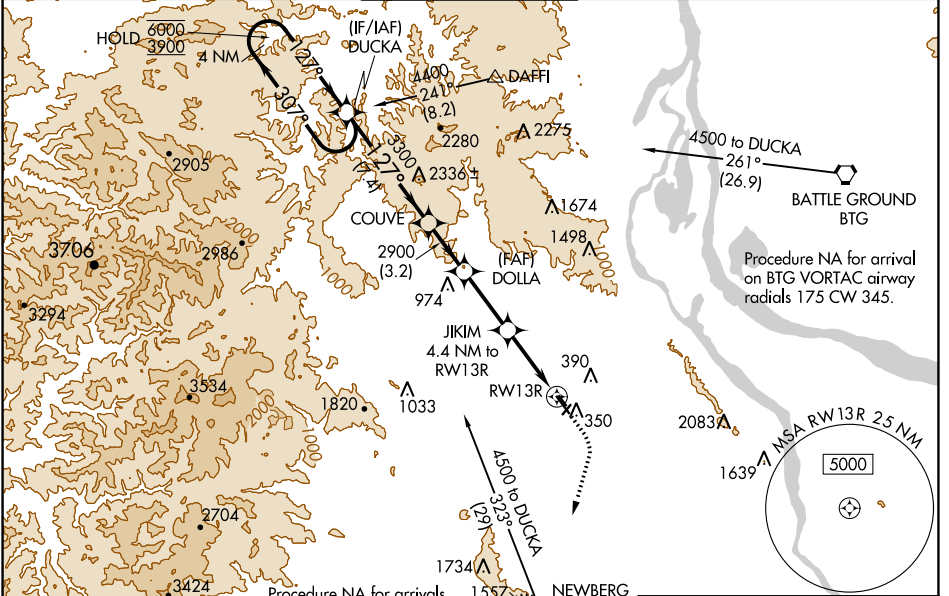
WAAS CH 69502 W13A	APP CRS 127°	Rwy Idg TDZE Apt Elev	6600 203 208
--	------------------------	-----------------------------	---

RNAV (GPS) RWY 13R

PORTLAND-HILLSBORO (HIO)

RNP APCH.	MALSR	MISSED APPROACH: Climb to 1000 then climbing right turn to 3000 direct UBG VOR/DME and hold. Continue climb-in-hold to 3000.
<p>⚠ Circling to Rwy 13L-31R NA at night. For uncompensated Baro-VNAV systems, LNAV/VNAV NA below -18°C or above 54°C. For inop ALS, increase LNAV Cat A/B visibility to RVR 5500 and Cat C/D to 1 3/8 SM. # RVR 1800 authorized with use of FD or AP or HUD to DA.</p>		

ATIS 127.65	PORTLAND APP CON 126.0 269.175	HILLSBORO TOWER ★ 119.3 (CTAF) 239.3	GND CON 121.7	UNICOM 122.95
-----------------------	--	--	-------------------------	-------------------------

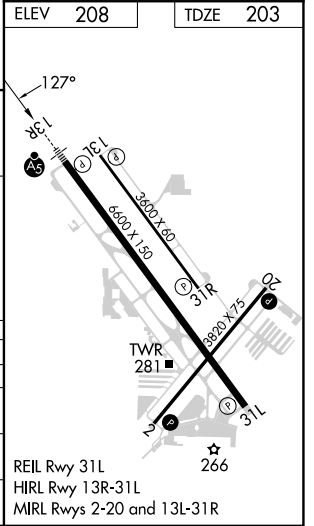


NW-1, 22 FEB 2024 to 21 MAR 2024

NW-1, 22 FEB 2024 to 21 MAR 2024

ELEV 208	TDZE 203
----------	----------

4 NM Holding Pattern 6000 ← 307° 3900 → 127° GP 3.00° TCH 48	DUCKA	COUVE	DOLLA	JIKIM	UBG
				4.4 NM to RWY13R	*LNNAV only.
		2900	2900	*1.3 NM to RWY13R	
			*1660		
CATEGORY	A	B	C	D	
LPV DA#		403/24	200 (200-1/2)		
LNAV/VNAV DA		661/45	458 (500-7/8)		
LNAV MDA	660/40	457 (500-3/4)	660/50	457 (500-1)	
CIRCLING	680-1 472 (500-1)	720-1 512 (600-1)	720-1 1/2 512 (600-1 1/2)	980-2 1/2 772 (800-2 1/2)	

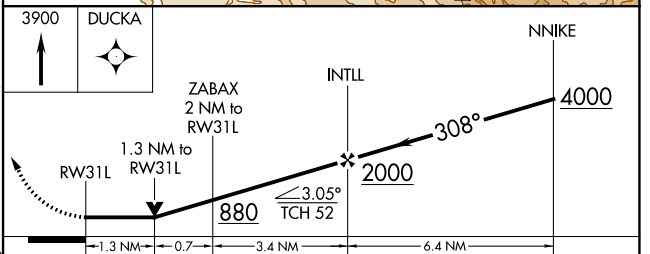
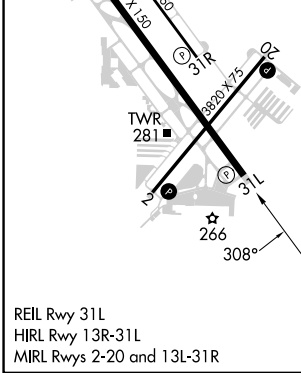
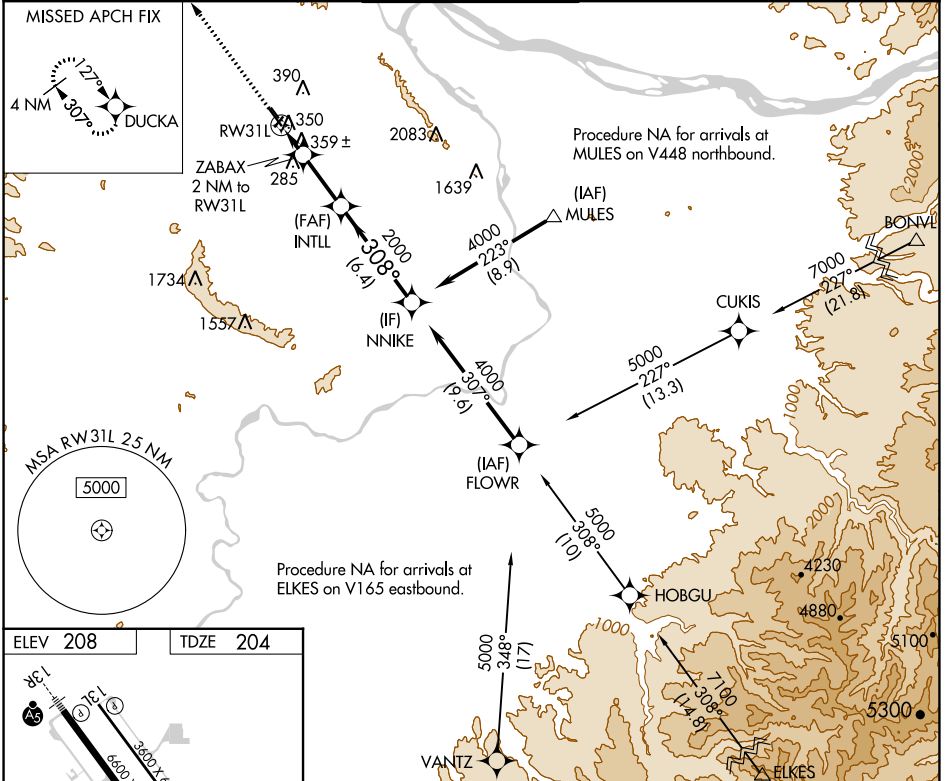


APP CRS	Rwy Idg	6600
308°	TDZE	204
	Apt Elev	208

RNAV (GPS) RWY 31L

PORTLAND-HILLSBORO (HIO)

RNP APCH.		MISSED APPROACH: Climb to 3900 direct DUCKA and hold.		
<p>▼ Circling to Rwy 13L, 31R NA at night. Rwy 31L helicopter visibility reduction below 3/4 SM NA.</p>				
ATIS	PORTLAND APP CON	HILLSBORO TOWER ★	GND CON	UNICOM
127.65	126.0 269.175	119.3 (CTAF) 239.3	121.7	122.95



CATEGORY	A	B	C	D
LNAV MDA	660-1	456 (500-1)	660-1 3/8	456 (500-1 3/8)
C CIRCLING	680-1	720-1	720-1 1/2	980-2 1/2
	472 (500-1)	512 (600-1)	512 (600-1 1/2)	772 (800-2 1/2)

NW-1, 22 FEB 2024 to 21 MAR 2024

NW-1, 22 FEB 2024 to 21 MAR 2024