

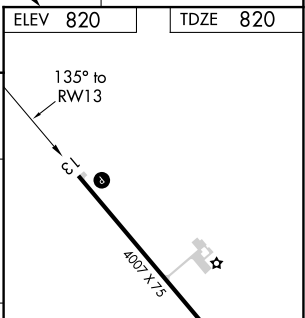
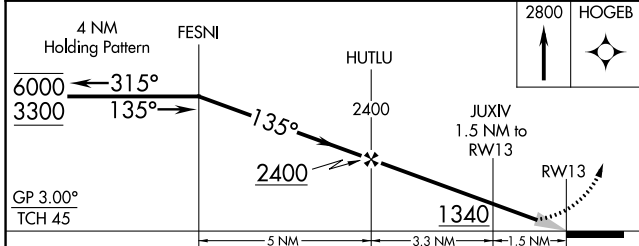
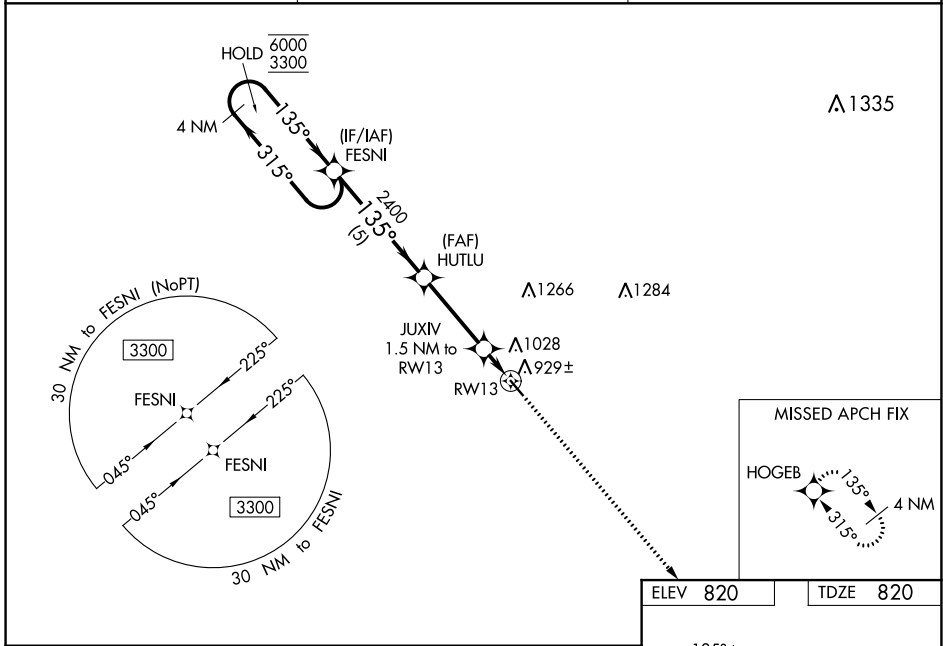
WAAS CH 40333 W13A	APP CRS 135°	Rwy Idg TDZE 820 Apt Elev 820	4007
--	------------------------	---	-------------

RNAV (GPS) RWY 13

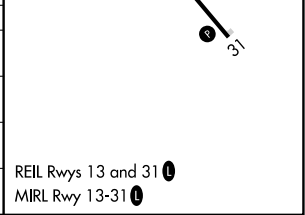
HALLOCK MUNI (HCO)

RNP APCH-GPS.	<p>MISSED APPROACH: Climb to 2800 direct HOGEB and hold.</p>
<p>▼ Baro-VNAV NA when using Grafton altimeter setting. For uncompensated Baro-VNAV systems, LNAV/VNAV NA below -16°C or above 54°C. When local altimeter setting not received, use Grafton altimeter setting and increase LPV DA to 1082 feet; increase LNAV/VNAV DA to 1161 feet; increase all MDAs 80 feet and LNAV visibility Cat C ¼ SM, and Circling visibility Cat C ¼ SM.</p>	

AWOS-3 126.475	MINNEAPOLIS CENTER 132.15 269.6	UNICOM 122.8 (CTAF) 0
--------------------------	---	---------------------------------



CATEGORY	A	B	C	D
LPV DA		1020-1 200 (200-1)		NA
LNAV/VNAV DA		1099-1 279 (300-1)		NA
LNAV MDA		1180-1 360 (400-1)		NA
C CIRCLING	1380-1 560 (600-1)		1380-1½ 560 (600-1½)	NA



NC-1, 22 FEB 2024 to 21 MAR 2024

NC-1, 22 FEB 2024 to 21 MAR 2024

WAAS CH 45933 W31A	APP CRS 315°	Rwy Idg TDZE Apt Elev	4007 820 820
--	------------------------	-----------------------------	---

RNAV (GPS) RWY 31

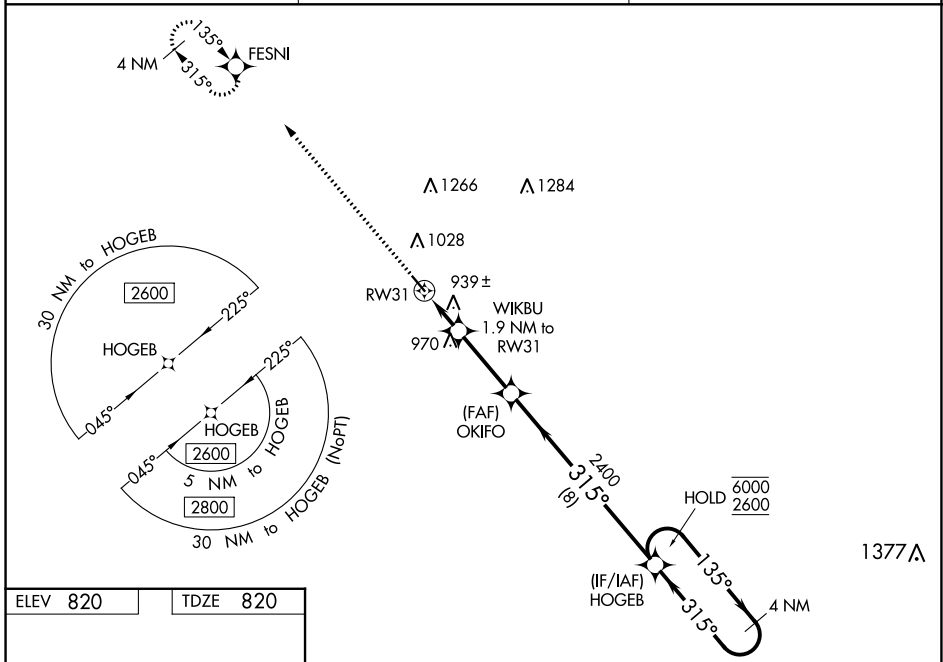
HALLOCK MUNI (HCO)

RNP APCH-GPS.

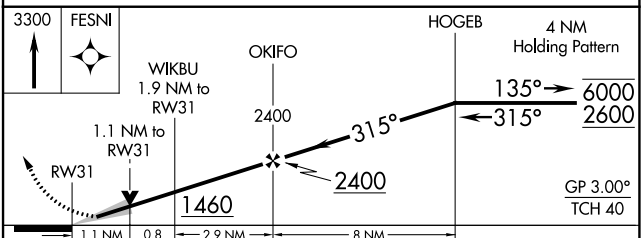
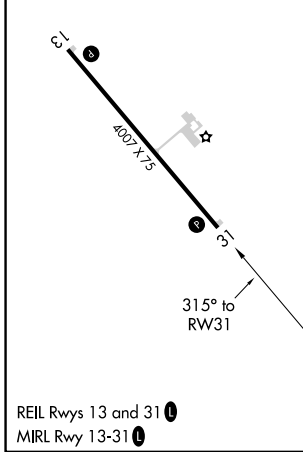
⚠ For uncompensated Baro-VNAV systems, LNAV/VNAV NA below -16°C or above 54°C. When local altimeter setting not received, use Grafton altimeter setting and increase LPV DA To 1082 feet; increase LNAV/VNAV DA to 1132 feet; increase all MDAs 80 feet and LNAV visibility Cat C 3/8 SM, and Circling visibility Cat C 1/4 SM. Baro-VNAV and VDP NA when using Grafton altimeter setting.

MISSED APPROACH: Climb to 3300 direct FESNI and hold, continue climb-in-hold to 3300.

AWOS-3 126.475	MINNEAPOLIS CENTER 132.15 269.6	UNICOM 122.8 (CTAF) 0
--------------------------	---	---------------------------------



ELEV 820	TDZE 820
----------	----------



CATEGORY	A	B	C	D
LPV DA		1020-1	200 (200-1)	NA
LNAV/VNAV DA		1070-1	250 (300-1)	NA
LNAV MDA		1200-1	380 (400-1)	NA
C CIRCLING	1380-1	560 (600-1)	1380-1½ 560 (600-1½)	NA

NC-1, 22 FEB 2024 to 21 MAR 2024

NC-1, 22 FEB 2024 to 21 MAR 2024