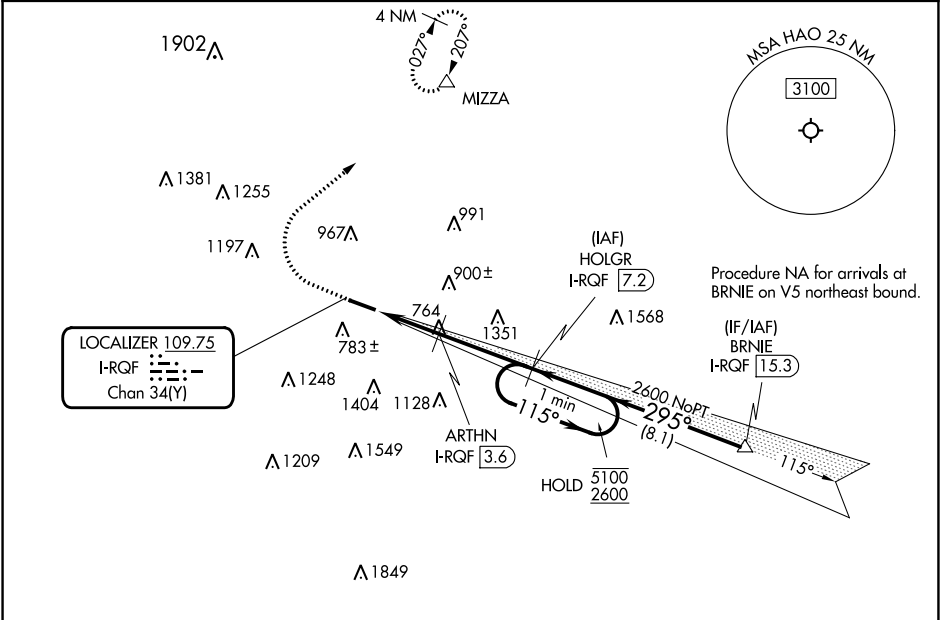


LOC/DME I-RQF 109.75 Chan 34 (Y)	APP CRS 295°	Rwy Idg TDZE Apt Elev	5500 619 632
--	------------------------	-----------------------------	---

ILS or LOC RWY 29

BUTLER COUNTY RGNL/HOGAN FLD (HAO)

RNP APCH - GPS DME required.		MALS	MISSED APPROACH: Climb to 1600 then climbing right turn to 2600 direct MIZZA and hold.
Inop table does not apply to S-ILS 29. 			
ASOS 121.425	CINCINNATI APP CON 121.0 254.25	CLNC DEL 126.25	UNICOM 123.05 (CTAF) 0



EC-2, 22 FEB 2024 to 21 MAR 2024

EC-2, 22 FEB 2024 to 21 MAR 2024

ELEV 632	TDZE 619
----------	----------

Detailed approach diagram showing:

- Altitudes: 1600, 2600, 5100, 2600, 1460, 2600.
- Distances: 1.3 NM, 1.2 NM, 3.6 NM.
- Angles: 115°, 295°, 29°.
- Speeds: GS 3.00° TCH 46.
- Obstacles: 5500 X 100.

CATEGORY	A	B	C	D
S-ILS 29		819-3/4	200 (200-3/4)	
S-LOC 29	1080-3/4	461 (500-3/4)	1080-1/8	461 (500-1/8)
CIRCLING	1280-1	648 (700-1)	1300-1 3/4 668 (700-1 3/4)	1760-3 1128 (1200-3)

MIRL Rwy 11-29
REIL Rwys 11 and 29

FAF to MAP 6.1 NM

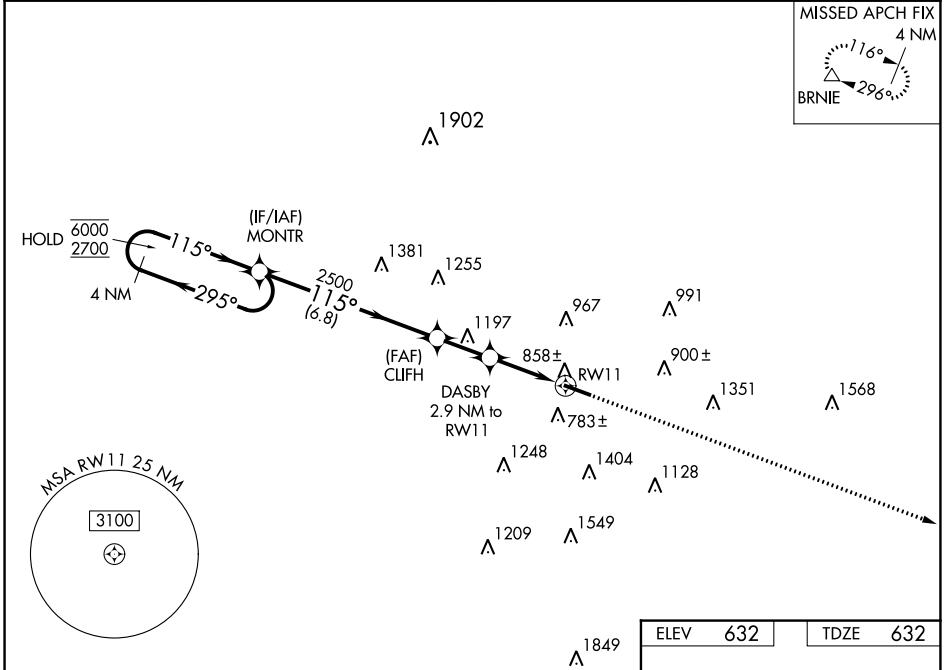
Knots	60	90	120	150	180
Min:Sec	6:06	4:04	3:03	2:26	2:02

WAAS CH 56600 W11A	APP CRS 115°	Rwy Idg TDZE Apt Elev	5500 632 632
--	------------------------	-----------------------------	---

RNAV (GPS) RWY 11

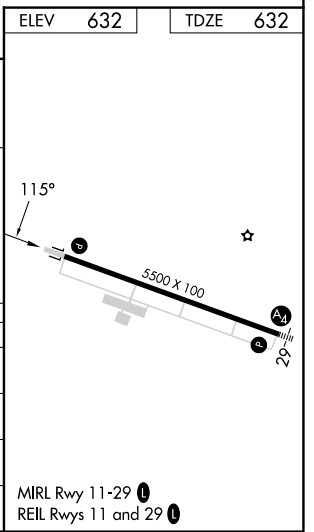
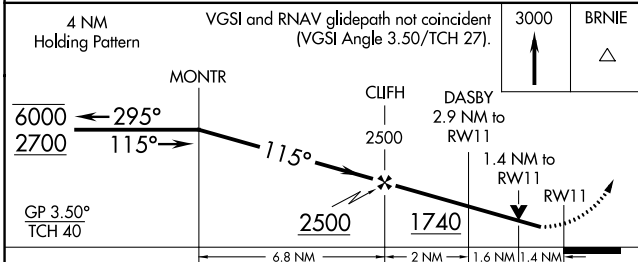
BUTLER COUNTY RGNL/HOGAN FLD (HAO)

RNP APCH - GPS.			MISSED APPROACH: Climb to 3000 direct BRNIE and hold.
ASOS 121.425	CINCINNATI APP CON 121.0 254.25	CLNC DEL 126.25	UNICOM 123.05 (CTAF)



EC-2, 22 FEB 2024 to 21 MAR 2024

EC-2, 22 FEB 2024 to 21 MAR 2024



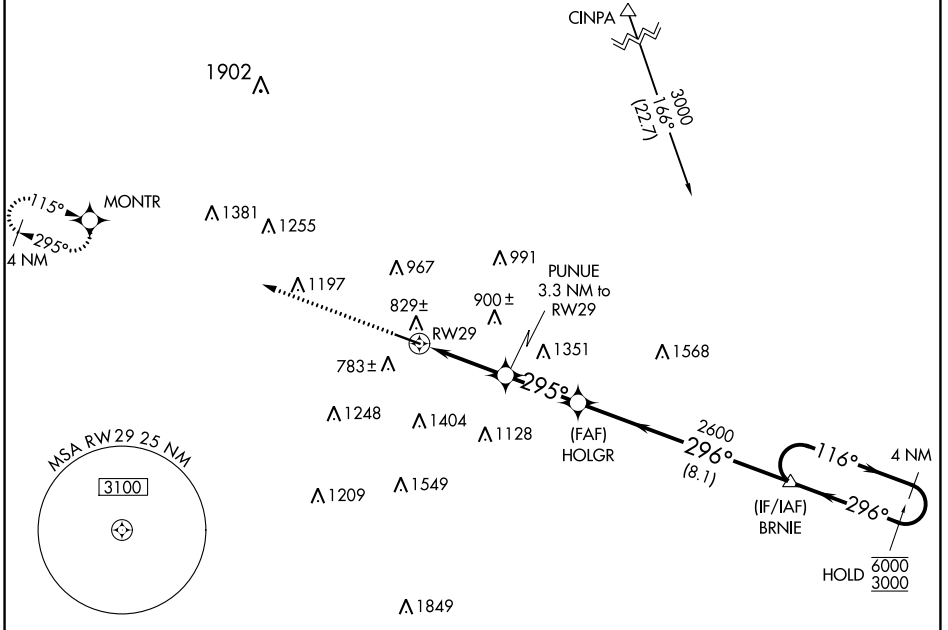
CATEGORY	A	B	C	D
LPV DA		1020-1 $\frac{1}{8}$	388 (400-1 $\frac{1}{8}$)	
LNAV/VNAV DA		1108-1 $\frac{3}{8}$	476 (500-1 $\frac{3}{8}$)	
LNAV MDA	1160-1	528 (600-1)	1160-1 $\frac{1}{2}$	528 (600-1 $\frac{1}{2}$)
C CIRCLING	1280-1	648 (700-1)	1300-1 $\frac{3}{4}$ 668 (700-1 $\frac{3}{4}$)	1760-3 1128 (1200-3)

WAAS CH 61300 W29A	APP CRS 295°	Rwy Idg TDZE Apt Elev	5500 619 632
--	------------------------	-----------------------------	---

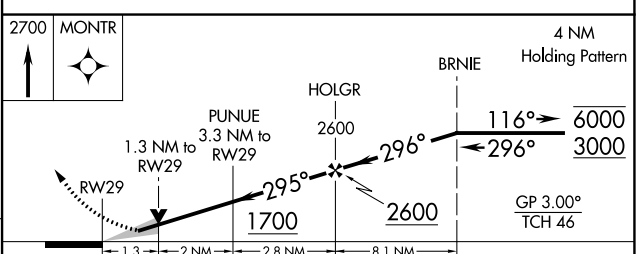
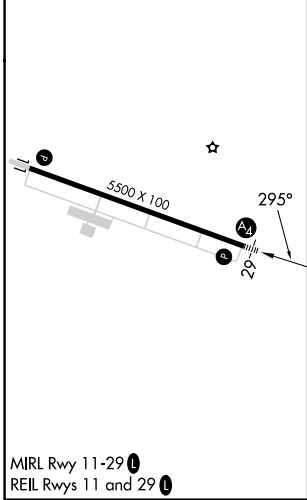
RNAV (GPS) RWY 29

BUTLER COUNTY RGNL/HOGAN FLD (HAO)

RNP APCH - GPS.			MALS	MISSED APPROACH: Climb to 2700 direct MONTR and hold.
For uncompensated Baro-VNAV systems, LNAV/VNAV NA below -18°C or above 54°C. Inop table does not apply to LPV.				
ASOS 121.425	CINCINNATI APP CON 121.0 254.25	CLNC DEL 126.25	UNICOM 123.05 (CTAF) 1	



ELEV 632	TDZE 619
-----------------	-----------------



CATEGORY	A	B	C	D
LPV DA		819-3/4	200 (200-3/4)	
LNAV/VNAV DA		1080-1 1/8	461 (500-1 1/8)	
LNAV MDA	1080-3/4	461 (500-3/4)	1080-1 1/8	461 (500-1 1/8)
CIRCLING	1280-1	648 (700-1)	1300-1 3/4 668 (700-1 3/4)	1760-3 1128 (1200-3)

EC-2, 22 FEB 2024 to 21 MAR 2024

EC-2, 22 FEB 2024 to 21 MAR 2024