

WAAS CH <b>77882</b> <b>W16A</b>	APP CRS <b>155°</b>	Rwy Idg TDZE Apt Elev	<b>5310</b> <b>689</b> <b>689</b>
--	------------------------	-----------------------------	---

# RNAV (GPS) RWY 16

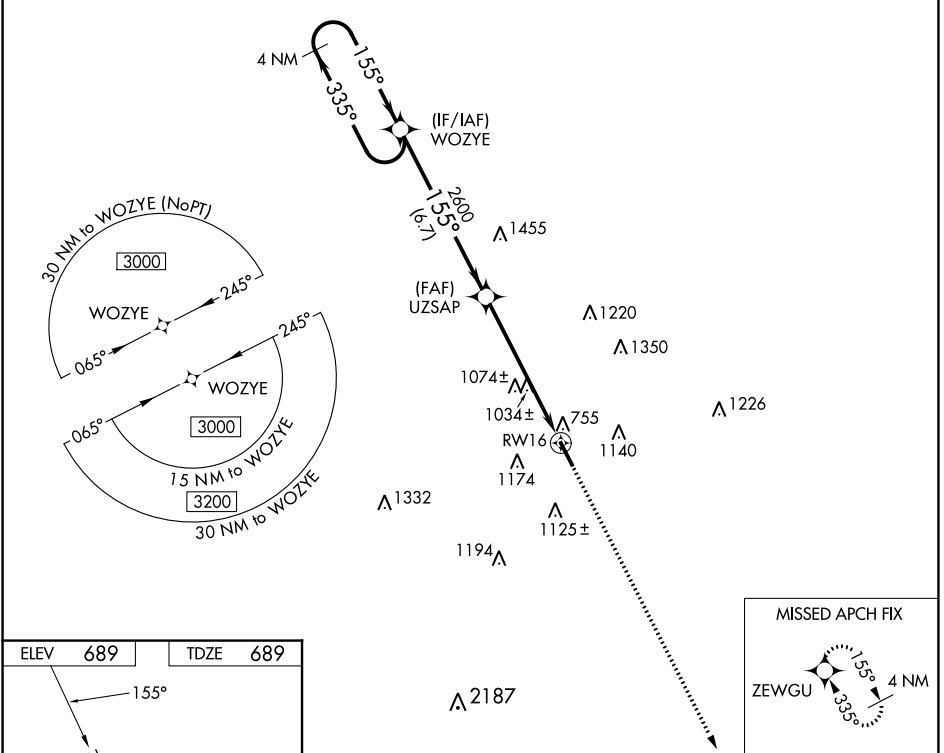
ABERNATHY FLD (GZS)

RNP APCH - GPS.

**▼** Procedure NA at night. Helicopter visibility reduction below 1 SM NA. When local altimeter setting not received, use Huntsville Exec Tom Sharp Jr Fld altimeter setting: increase all MDA 100 feet and visibility LP and LNAV Cats C/D ½ SM and Circling Cats A/B ¼ SM and Cat C ½ SM.

**MISSED APPROACH:**  
Climb to 3000 direct ZEWGU and hold.

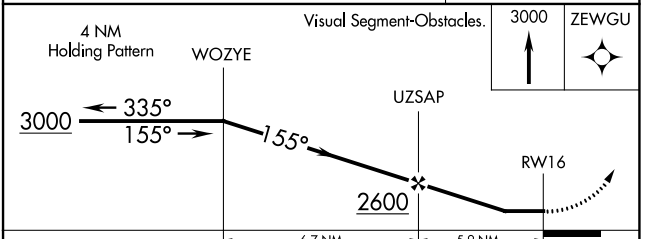
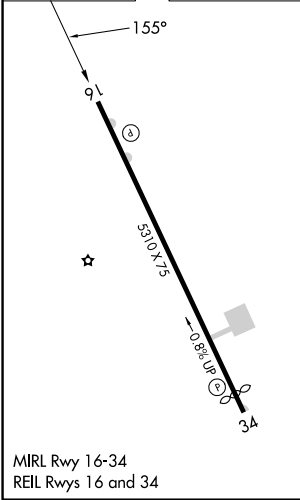
AWOS-3 <b>118.275</b>	MEMPHIS CENTER <b>125.85 379.25</b>	UNICOM <b>122.8 (CTAF)</b>
--------------------------	--	-------------------------------



SE-1, 22 FEB 2024 to 21 MAR 2024

SE-1, 22 FEB 2024 to 21 MAR 2024

ELEV <b>689</b>	TDZE <b>689</b>
-----------------	-----------------



CATEGORY	A	B	C	D
LP MDA	1300-1	611 (700-1)	1300-1¾	611 (700-1¾)
LNAV MDA	1340-1	651 (700-1)	1340-1⅞	651 (700-1⅞)
CIRCLING	1420-1 731 (800-1)	1480-1 791 (800-1)	1480-2¼ 791 (800-2¼)	1640-3 951 (1000-3)



VORTAC RQZ <b>112.2</b> Chan <b>59</b>	APP CRS <b>313°</b>	Rwy Idg TDZE <b>665</b> Apt Elev <b>689</b>
--	------------------------	---

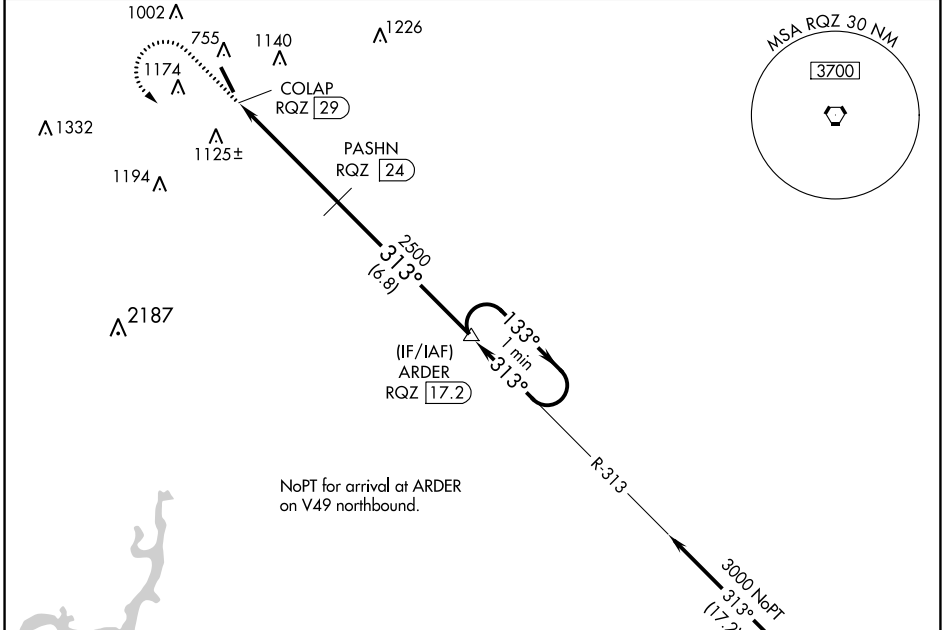
# VOR/DME RWY 34

ABERNATHY FLD (GZS)

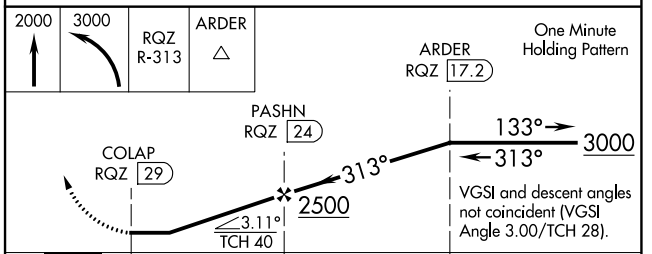
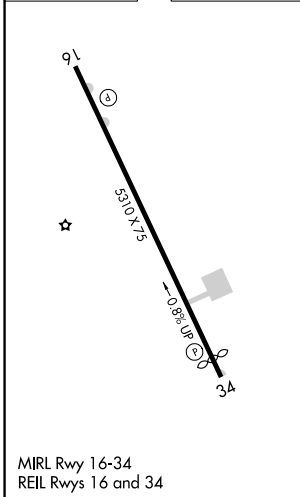
**⚠ NA** When local altimeter setting not received, use Huntsville Exec Tom Sharp Jr Fld altimeter setting and increase all MDA 100 feet and increase S-34 Cats A/B visibility ¼ mile and Cats C/D visibility ½ mile; increase Circling Cat B visibility ¼ mile and Cat C visibility ½ mile. Night landing: Rwy 16 NA. Helicopter visibility reduction below ¾ SM NA.

**MISSED APPROACH:** Climb to 2000 then climbing left turn to 3000 on RQZ VORTAC R-313 to ARDER/RQZ 17.2 DME and hold.

AWOS-3 <b>118.275</b>	MEMPHIS CENTER <b>125.85 379.25</b>	UNICOM <b>122.8 (CTAF)</b>
--------------------------	--	-------------------------------



ELEV <b>689</b>	TDZE <b>665</b>
-----------------	-----------------



CATEGORY	A	B	C	D
S-34	1520-1 855 (900-1)	1520-1¼ 855 (900-1¼)	1520-2½	855 (900-2½)
<b>C</b> CIRCLING	1520-1¼	831 (900-1¼)	1520-2½ 831 (900-2½)	1640-3 951 (1000-3)

SE-1, 22 FEB 2024 to 21 MAR 2024

SE-1, 22 FEB 2024 to 21 MAR 2024