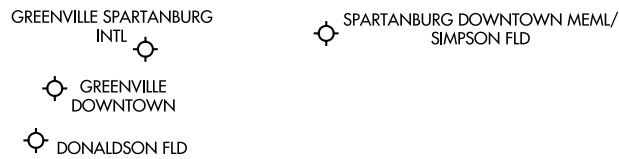
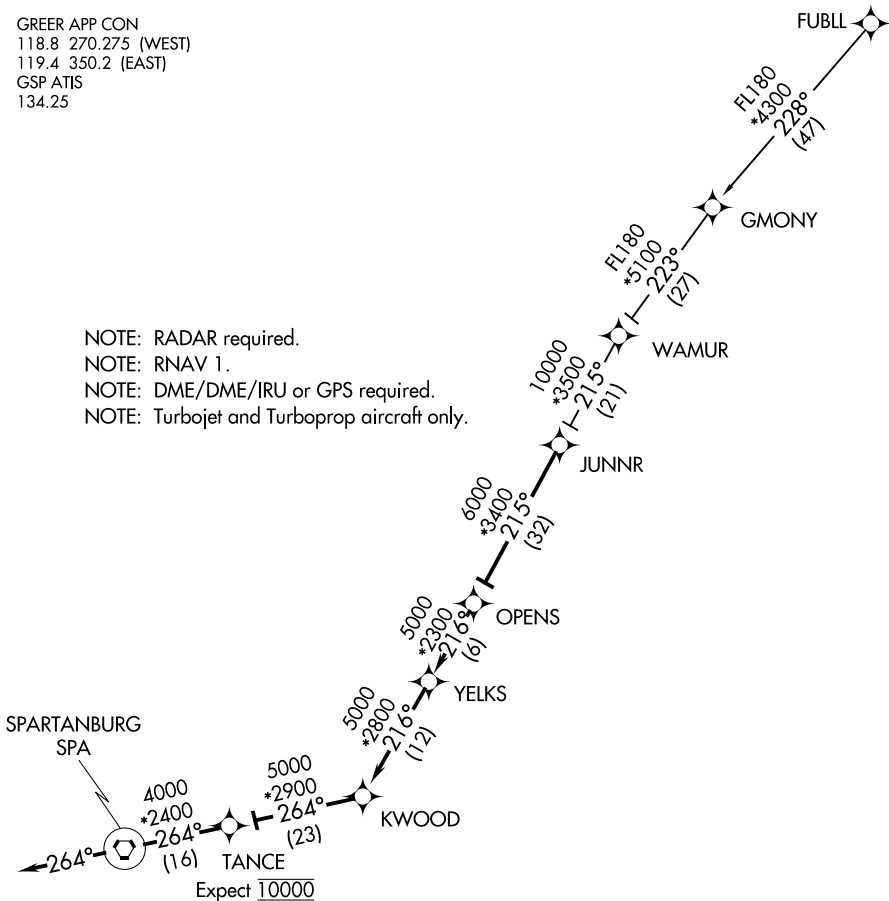


# JUNNR THREE ARRIVAL (RNAV)

GREER, SOUTH CAROLINA

GREER APP CON  
 118.8 270.275 (WEST)  
 119.4 350.2 (EAST)  
 GSP ATIS  
 134.25

NOTE: RADAR required.  
 NOTE: RNAV 1.  
 NOTE: DME/DME/IRU or GPS required.  
 NOTE: Turbojet and Turboprop aircraft only.



NOTE: Chart not to scale.

## ARRIVAL ROUTE DESCRIPTION

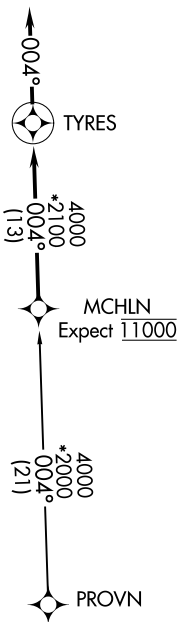
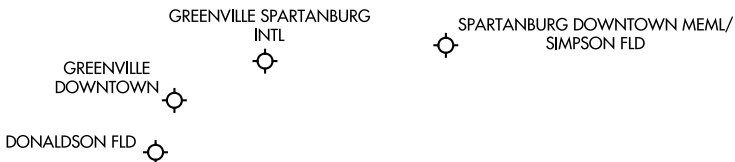
### FUBLL TRANSITION (FUBLL.JUNNR3)

From JUNNR on track 215° to OPENS, then on track 216° to YELKS, then on track 216° to KWOOD, then on track 264° to TANCE, then on track 264° to SPA VORTAC, then on heading 264° or as assigned by ATC. Expect RADAR vectors to final approach course.

# MCHLN TWO ARRIVAL (RNAV)

GREER, SOUTH CAROLINA

GREER APP CON  
118.8 270.275 (WEST)  
119.4 350.2 (EAST)  
GSP ATIS  
134.25



- NOTE: RADAR required.
- NOTE: RNAV 1.
- NOTE: DME/DME/IRU or GPS required.
- NOTE: Turbojet and Turboprop aircraft only.

NOTE: Chart not to scale.

## ARRIVAL ROUTE DESCRIPTION

### PROVN TRANSITION (PROVN.MCHLN2)

From MCHLN on track 004° to TYRES, then on heading 004°. Expect RADAR vectors to final approach course.

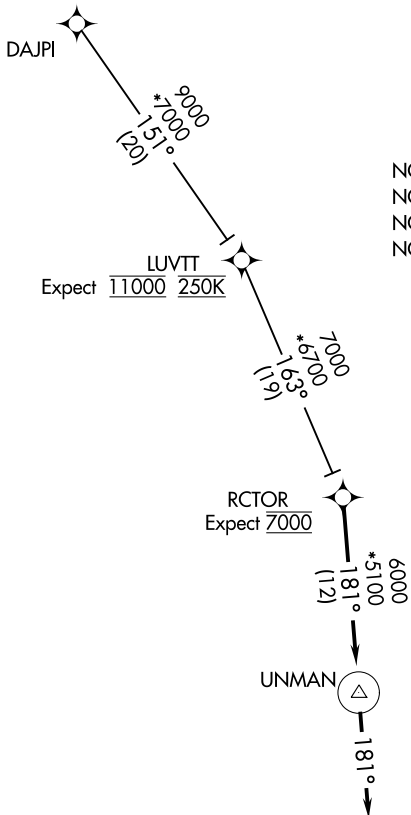
# MCHLN TWO ARRIVAL (RNAV)

GREER, SOUTH CAROLINA

# RCTOR TWO ARRIVAL (RNAV)

GREER, SOUTH CAROLINA

GREER APP CON  
118.8 270.275 (WEST)  
119.4 350.2 (EAST)  
GSP ATIS  
134.25



NOTE: RADAR required.  
 NOTE: RNAV 1.  
 NOTE: DME/DME/IRU or GPS required.  
 NOTE: Turbojet and Turboprop aircraft only.

Expect 11000 250K

RCTOR  
Expect 7000

UNMAN

DONALDSON  
FLD

GREENVILLE  
DOWNTOWN

GREENVILLE  
SPARTANBURG  
INTL

SPARTANBURG DOWNTOWN MEML/  
SIMPSON FLD

NOTE: Chart not to scale.

## ARRIVAL ROUTE DESCRIPTION

### DAJPI TRANSITION (DAJPI.RCTOR2)

From RCTOR on track 181° to UNMAN, then on heading 181°. Expect RADAR vectors to final approach course.

# RCTOR TWO ARRIVAL (RNAV)

GREER, SOUTH CAROLINA

WORXS TWO ARRIVAL (RNAV)  
(WORXS.WORXS2) 25APR19

(WORXS.WORXS2) 21168  
WORXS TWO ARRIVAL (RNAV)

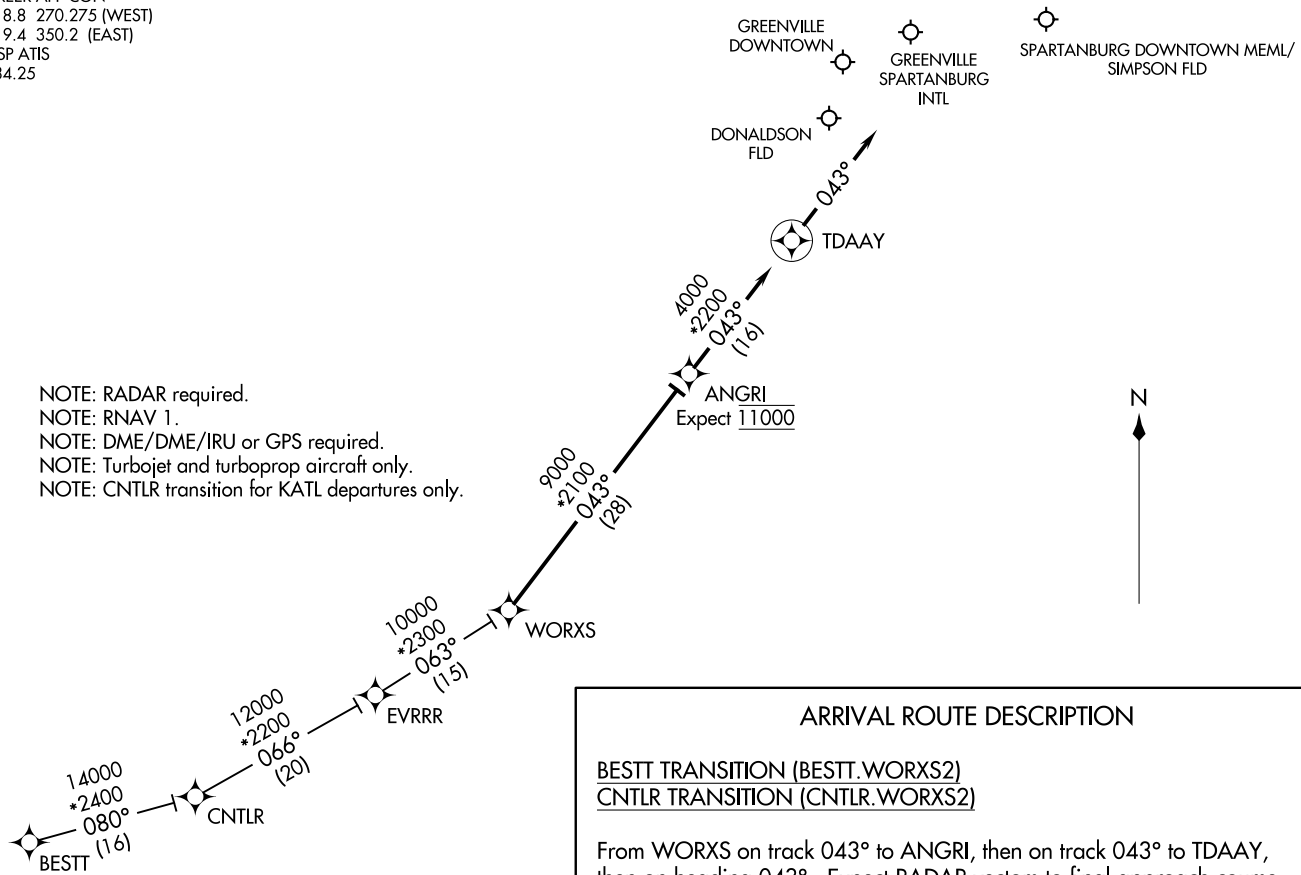
AL-5124 (FAA)

GREER, SOUTH CAROLINA

GREER, SOUTH CAROLINA

GREER APP CON  
118.8 270.275 (WEST)  
119.4 350.2 (EAST)  
GSP ATIS  
134.25

NOTE: RADAR required.  
NOTE: RNAV 1.  
NOTE: DME/DME/IRU or GPS required.  
NOTE: Turbojet and turboprop aircraft only.  
NOTE: CNTLR transition for KATL departures only.



**ARRIVAL ROUTE DESCRIPTION**

BESTT TRANSITION (BESTT.WORXS2)  
CNTLR TRANSITION (CNTLR.WORXS2)

From WORXS on track 043° to ANGRI, then on track 043° to TDAAY, then on heading 043°. Expect RADAR vectors to final approach course.

NOTE: Chart not to scale.