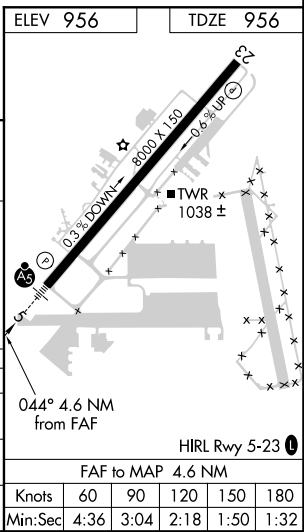
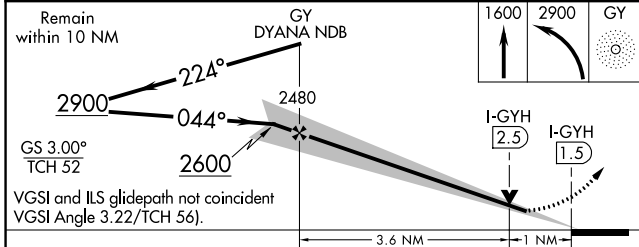
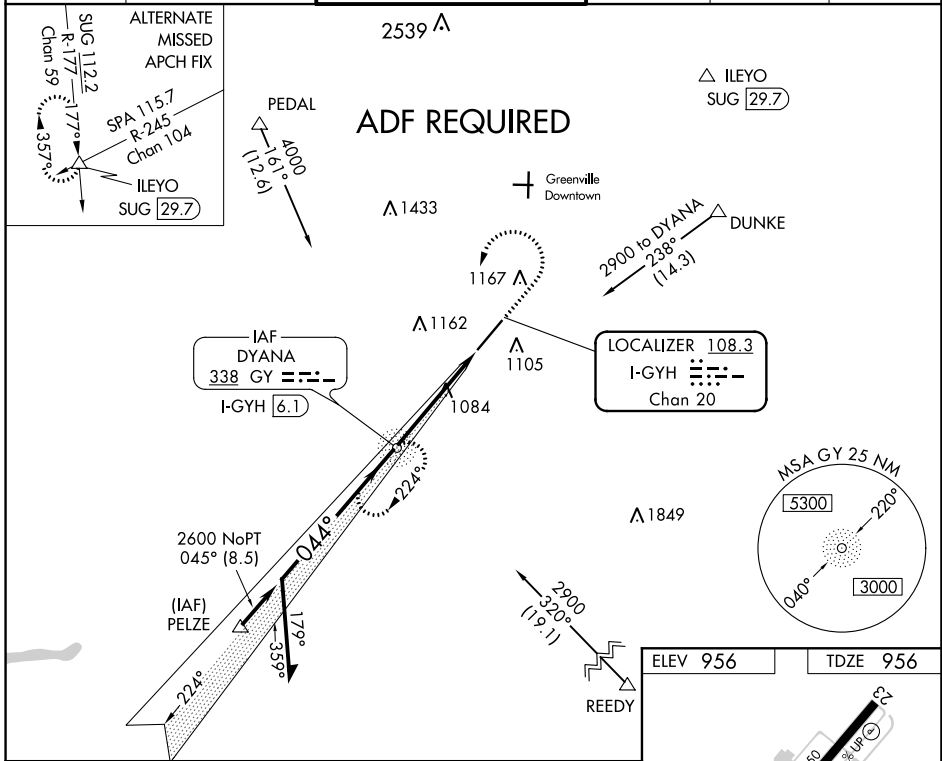


LOC/DME I-GYH 108.3 Chan 20	APP CRS 044°	Rwy Idg TDZE 956 Apt Elev 956
--	------------------------	---

ILS or LOC RWY 5

DONALDSON FLD (GYH)

<p>▲ When local altimeter setting not received, use Greer altimeter setting and increase all DAs/MDAs 40 feet, increase S-LOC Cat C visibility 1/4 mile.</p>	<p>MALS</p>	<p>MISSED APPROACH: Climb to 1600 then climbing left turn to 2900 direct DYANA NDB and hold, continue climb-in-hold to 2900.</p>			
<p>AWOS-3 127.325</p>	<p>GREER APP CON ★ 118.8 270.275</p>	<p>DONALDSON TOWER ★ 133.325 (CTAF) 269.25</p>	<p>GND CON 121.4</p>	<p>CLNC DEL 121.4</p>	<p>UNICOM 122.7</p>



CATEGORY	A	B	C	D
S-ILS 5		1156-1/2	200 (200-1/2)	
S-LOC 5		1340-1/2	384 (400-1/2)	1340-3/4 384 (400-3/4)
CIRCLING	1420-1 464 (500-1)	1480-1 524 (600-1)	1480-1 1/2 524 (600-1/2)	1540-2 584 (600-2)

SE-2, 02 DEC 2021 to 30 DEC 2021

SE-2, 02 DEC 2021 to 30 DEC 2021

APP CRS 224°	Rwy Idg 8000
	TDZE 938
	Apt Elev 956

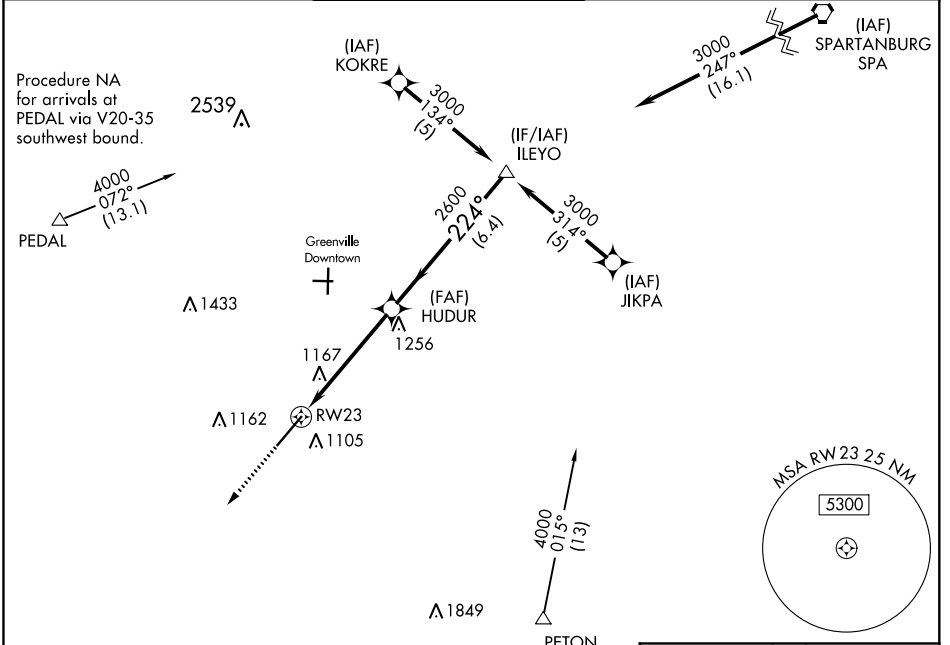
RNAV (GPS) RWY 23

DONALDSON FLD (GYH)

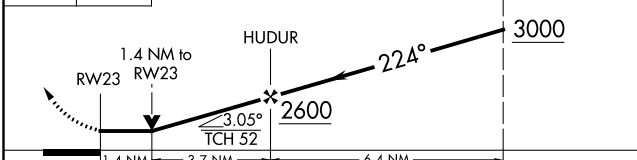
▼ If local altimeter setting not received, use Greer altimeter setting and increase all MDAs 40 feet. VDP NA when using Greer altimeter setting. Helicopter visibility reduction below 3/4 statute mile NA. DME/DME RNP-0.3 NA.

▲ NA MISSED APPROACH: Climb to 3000 direct NINYI and hold.

AWOS-3 127.325	GREER APP CON ★ 118.8 270.275	DONALDSON TOWER ★ 133.325 (CTAF) 0 269.25	GND CON 121.4	CLNC DEL 121.4	UNICOM 122.7
--------------------------	---	---	-------------------------	--------------------------	------------------------



3000 NINYI VGS1 and descent angles not coincident (VGS1 Angle 4.14/TCH 95). Procedure Turn NA



ELEV 956	TDZE 938
----------	----------

224° to RW23

0.3% DOWN, 0.6% UP

8000 A15B

TWR 1038 ±

HIRL Rwy 5-23

CATEGORY	A	B	C	D
LNVA MDA	1420-1	482 (500-1)	1420-1 1/4 482 (500-1 1/4)	1420-1 1/2 482 (500-1 1/2)
CIRCLING	1420-1 464 (500-1)	1480-1 524 (600-1)	1480-1 1/2 524 (600-1 1/2)	1540-2 584 (600-2)


SE-2, 02 DEC 2021 to 30 DEC 2021

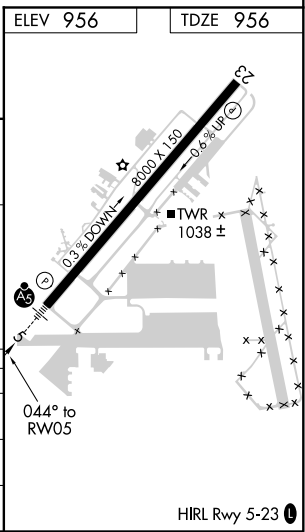
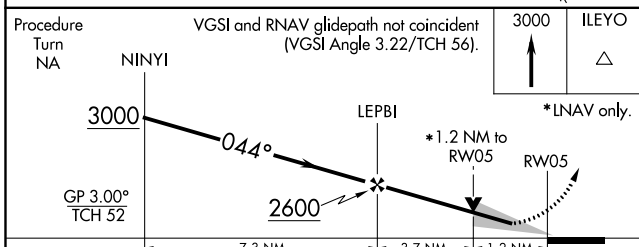
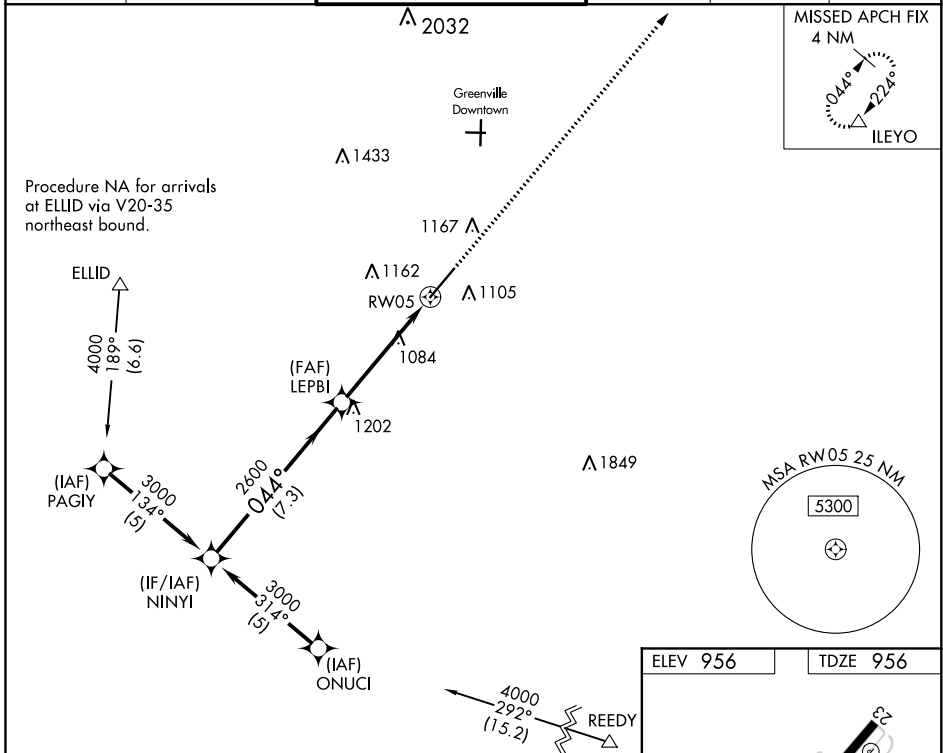
SE-2, 02 DEC 2021 to 30 DEC 2021

WAAS CH 72603 W05A	APP CRS 044°	Rwy Idg TDZE Apt Elev	8000 956 956
---------------------------------	------------------------	-----------------------------	---

RNAV (GPS) RWY 5

DONALDSON FLD (GYH)

<p>▼ If local altimeter setting not received, use Greer altimeter setting and increase DA 28 feet and all MDAs 40 feet. VDP NA when using Greer altimeter setting. DME/DME RNP-0.3 NA.</p> <p>▲ NA</p>		<p>MALSR</p> 	<p>MISSED APPROACH: Climb to 3000 direct ILEYO and hold.</p>		
AWOS-3 127.325	GREER APP CON ★ 118.8 270.275	DONALDSON TOWER ★ 133.325 (CTAF) 0 269.25	GND CON 121.4	CLNC DEL 121.4	UNICOM 122.7



CATEGORY	A	B	C	D
LPV DA	1209-½		253 (300-½)	
LNAV MDA	1400-½	444 (500-½)	1400-¾ 444 (500-¾)	1400-1 444 (500-1)
CIRCLING	1420-1 464 (500-1)	1480-1 524 (600-1)	1480-1½ 524 (600-1½)	1540-2 584 (600-2)

SE-2, 02 DEC 2021 to 30 DEC 2021

SE-2, 02 DEC 2021 to 30 DEC 2021