

APP CRS 048°	Rwy Idg TDZE Apt Elev	N/A N/A 454
------------------------	-----------------------------	--

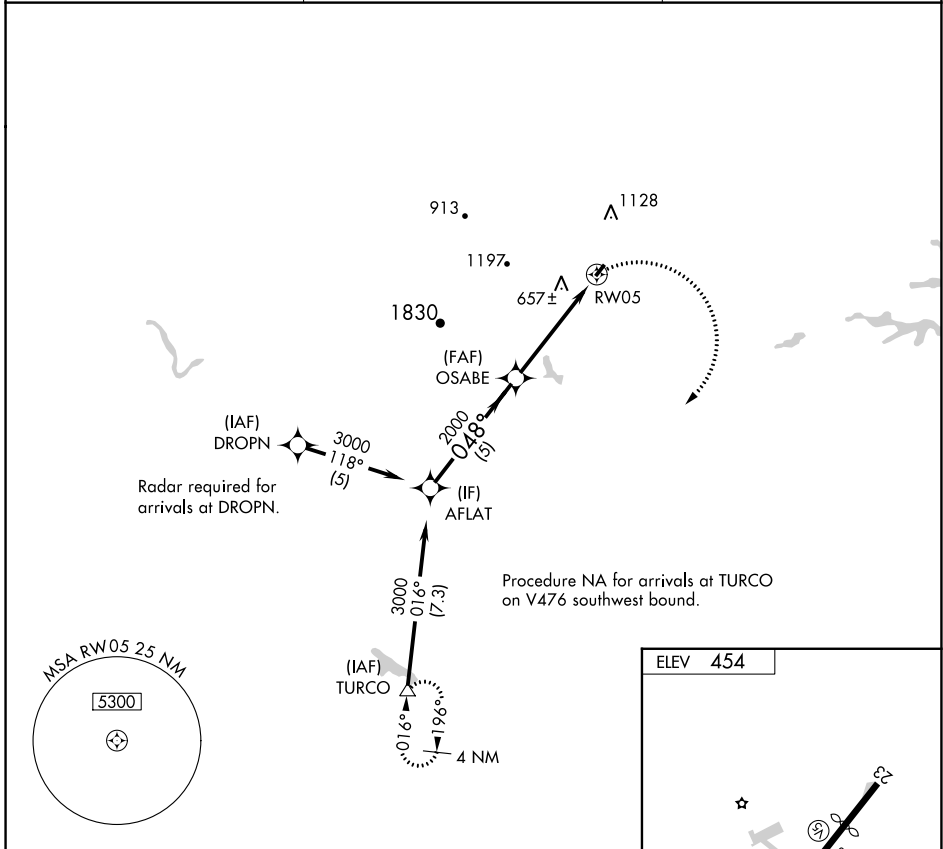
RNAV (GPS)-A

GORDONSVILLE MUNI (GVE)

▽ When local altimeter setting not received, use Orange County altimeter setting and increase all MDA 20 ft. DME/DME RNP-0.3 NA. Procedure NA at night.
△ NA Helicopter visibility reduction below 1 SM NA.

MISSED APPROACH: Climbing right turn to 3300 direct TURCO and hold.

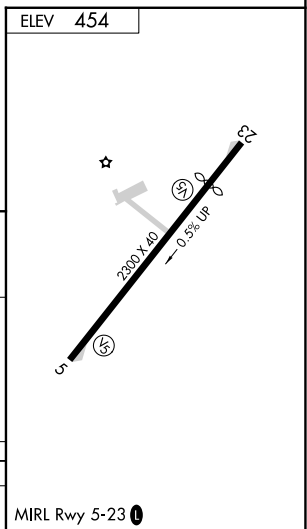
AWOS-3 120.225	POTOMAC APP CON 132.85 323.125	UNICOM 123.0 (CTAF) 0
--------------------------	--	---------------------------------



NE-3, 22 FEB 2024 to 21 MAR 2024

NE-3, 22 FEB 2024 to 21 MAR 2024

AFLAT		Visual Segment - Obstacles.		3300	TURCO
3000	048°	OSABE	2000	RW05	
5 NM		4.7 NM			
CATEGORY	A	B	C	D	
C CIRCLING	1520-3	1066 (1100-3)	NA		



APP CRS 228°	Rwy Idg TDZE Apt Elev	N/A N/A 454
------------------------	-----------------------------	--

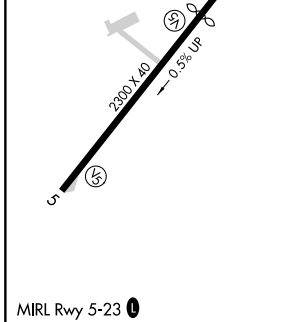
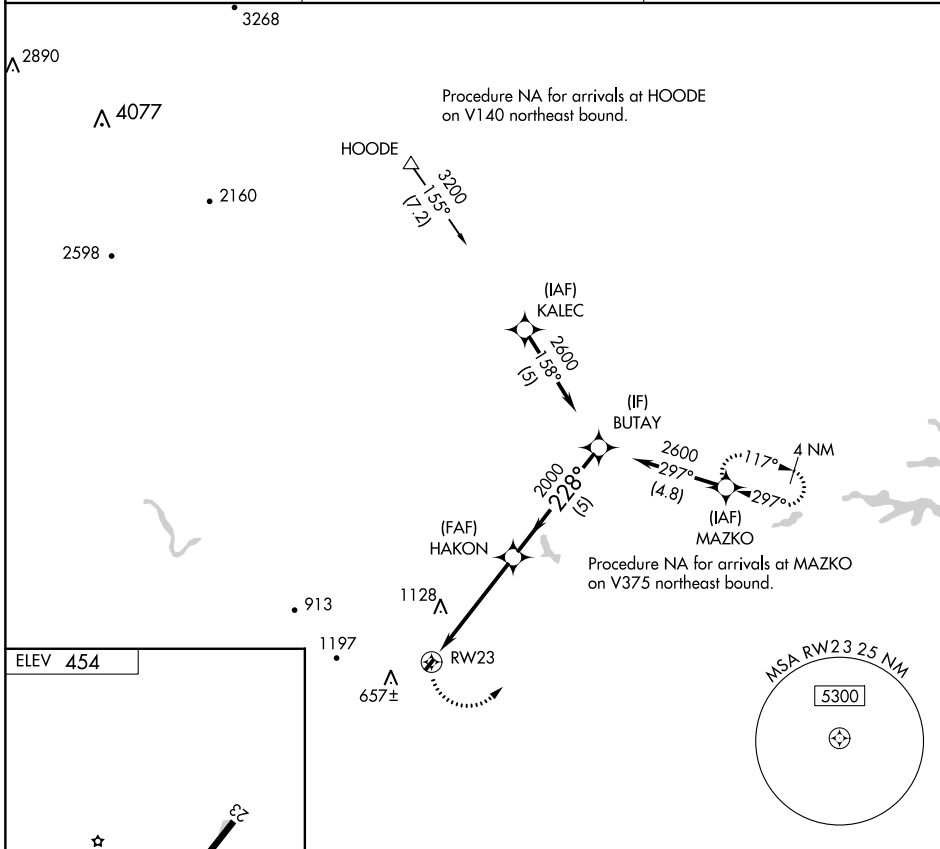
RNAV (GPS)-B

GORDONSVILLE MUNI (GVE)

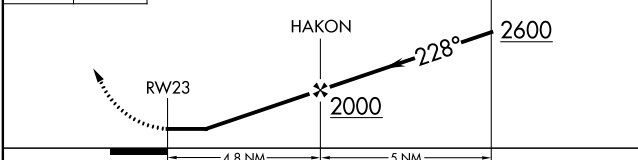
▽ When local altimeter setting not received, use Orange County altimeter setting and increase all MDA 20 ft. DME/DME RNP-0.3 NA. Procedure NA at night.
△ NA Helicopter visibility reduction below 1 SM NA.

MISSED APPROACH: Climbing left turn to 3000 direct MAZKO and hold.

AWOS-3 120.225	POTOMAC APP CON 132.85 323.125	UNICOM 123.0 (CTAF) 0
--------------------------	--	---------------------------------



3000 MAZKO Visual Segment - Obstacles.



CATEGORY	A	B	C	D
C CIRCLING	1520-3	1066 (1100-3)	NA	

NE-3, 22 FEB 2024 to 21 MAR 2024

NE-3, 22 FEB 2024 to 21 MAR 2024