


NDB GUY 275	APP CRS 177°	Rwy Idg TDZE Apt Elev	5904 3125 3125
-----------------------	------------------------	-----------------------------	---

NDB RWY 18


GUYMON MUNI (GUY)

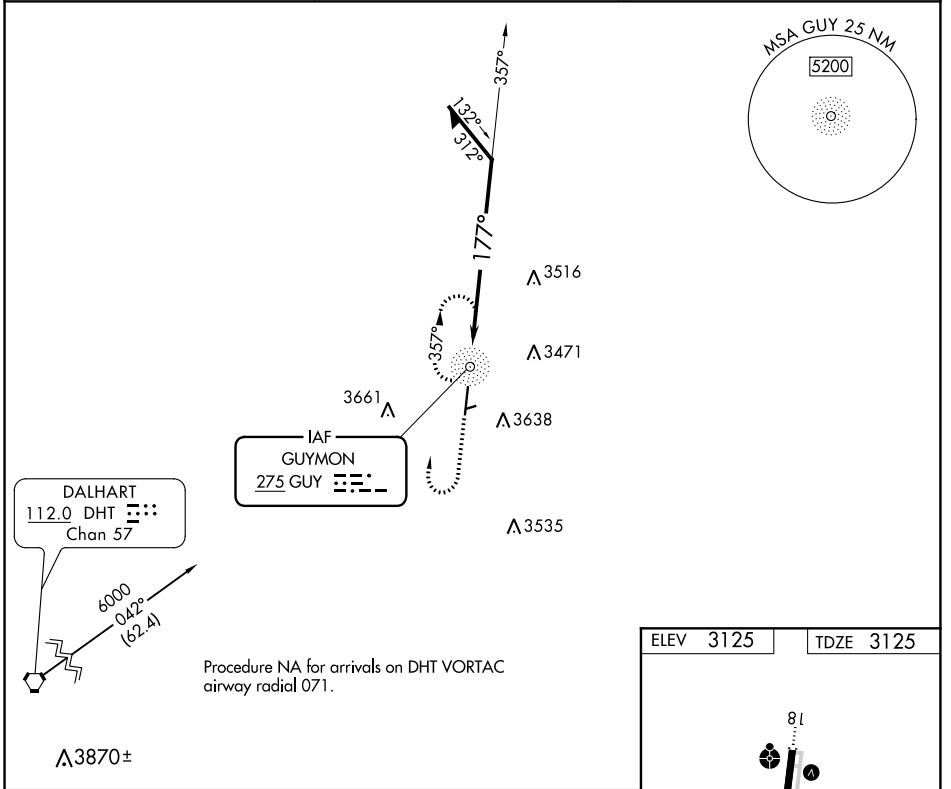
⚠ Circling NA to Rwys 6 and 24. Circling NA east of Rwy 18-36. When local altimeter setting not received, use Liberal altimeter setting and increase all MDAs 120 feet and visibility Cats A and C ½ SM. For inop ALS, increase S-18 Cat C visibility to 2½ SM. For inop ALS when using Liberal altimeter setting, inop table does not apply to S-18 Cat C.

ODALS  MISSED APPROACH: Climb to 5000 then right turn direct GUY NDB and hold.

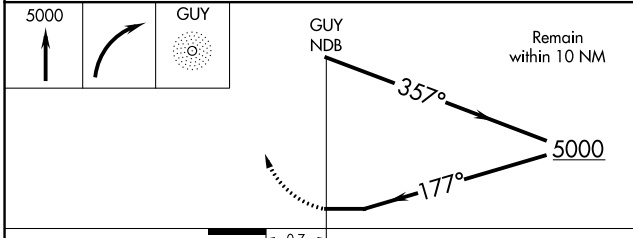
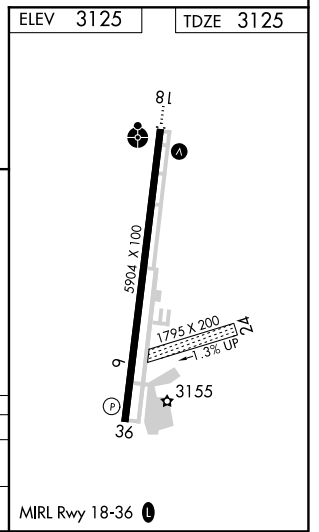
ASOS
119.925

KANSAS CITY CENTER
134.0 257.865

UNICOM
122.7 (CTAF) 



Procedure NA for arrivals on DHT VORTAC airway radial 071.



CATEGORY	A	B	C	D
S-18	3900-¾ 775 (800-¾)	3900-1 775 (800-1)	3900-2 775 (800-2)	NA
C CIRCLING	3900-1 775 (800-1)	3900-1¼ 775 (800-1¼)	3980-2½ 855 (900-2½)	NA

SC-1, 08 SEP 2022 to 06 OCT 2022

SC-1, 08 SEP 2022 to 06 OCT 2022

WAAS CH 82625 W18A	APP CRS 177°	Rwy Idg TDZE 3125 Apt Elev 3125
--	------------------------	---

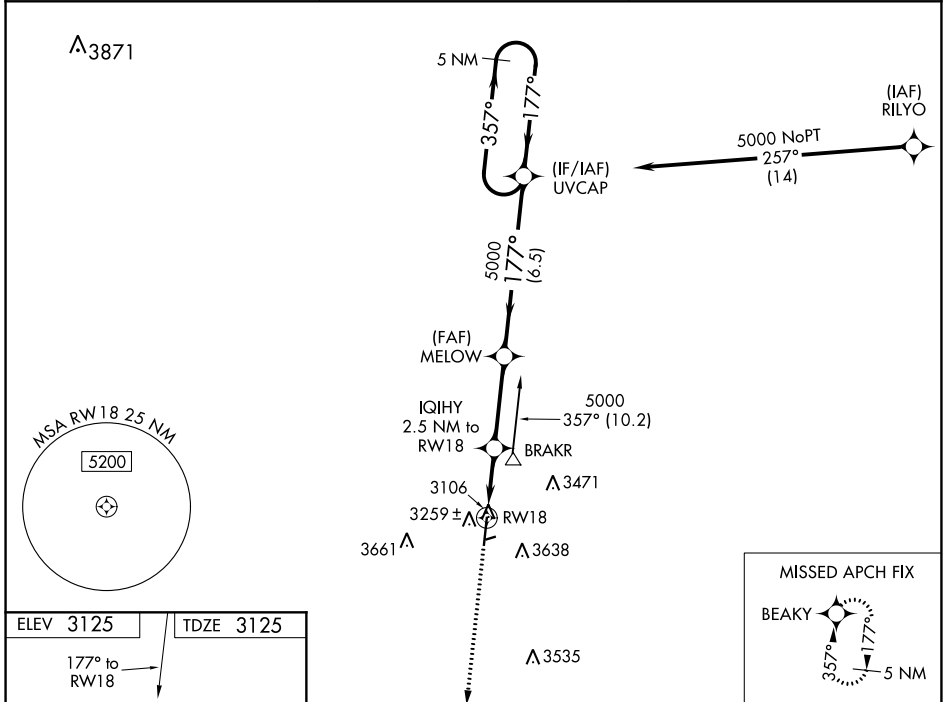
RNAV (GPS) RWY 18

GUYMON MUNI (GUY)

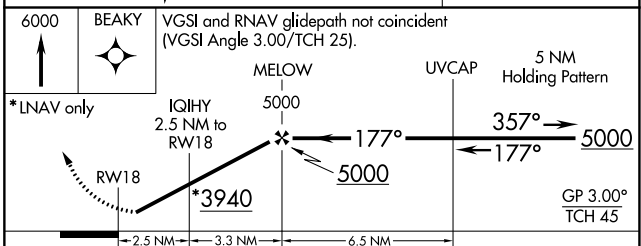
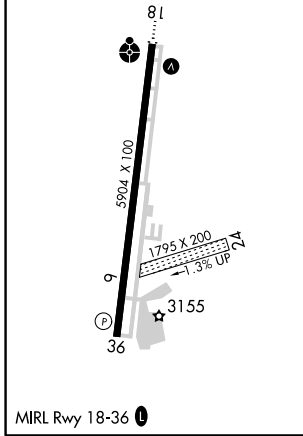
⚠ Baro-VNAV NA when using Liberal altimeter setting. For uncompensated Baro-VNAV systems, LNAV/VNAV NA below -21°C (-5°F) or above 54°C (130°F). Circling NA east of Rwy 18-36. DME/DME RNP-0.3 NA. When local altimeter setting not received, use Liberal altimeter setting: increase LPV DA to 3488 feet; increase LNAV/VNAV DA to 3564 feet and all visibilities ½ SM; increase all MDAs 120 feet and visibility Cat C ½ SM. Circling NA to Rwy 6 and 24.

ODALS MISSED APPROACH: Climb to 6000 direct BEAKY and hold.

ASOS 119.925	KANSAS CITY CENTER 134.0 257.625	UNICOM 122.7 (CTAF) 0
------------------------	--	---------------------------------



ELEV 3125	TDZE 3125
-----------	-----------



CATEGORY	A	B	C	D
LPV DA		3375-1	250 (300-1)	NA
LNAV/VNAV DA		3451-1	326 (400-1)	NA
LNAV MDA		3520-1	395 (400-1)	NA
CIRCLING	3580-1	455 (500-1)	3980-2½ 855 (900-2½)	NA

SC-1, 08 SEP 2022 to 06 OCT 2022

SC-1, 08 SEP 2022 to 06 OCT 2022

WAAS CH 50525 W36A	APP CRS 357°	Rwy Idg TDZE 3125 Apt Elev 3125	5904 3125 3125
--	------------------------	---	---

RNAV (GPS) RWY 36

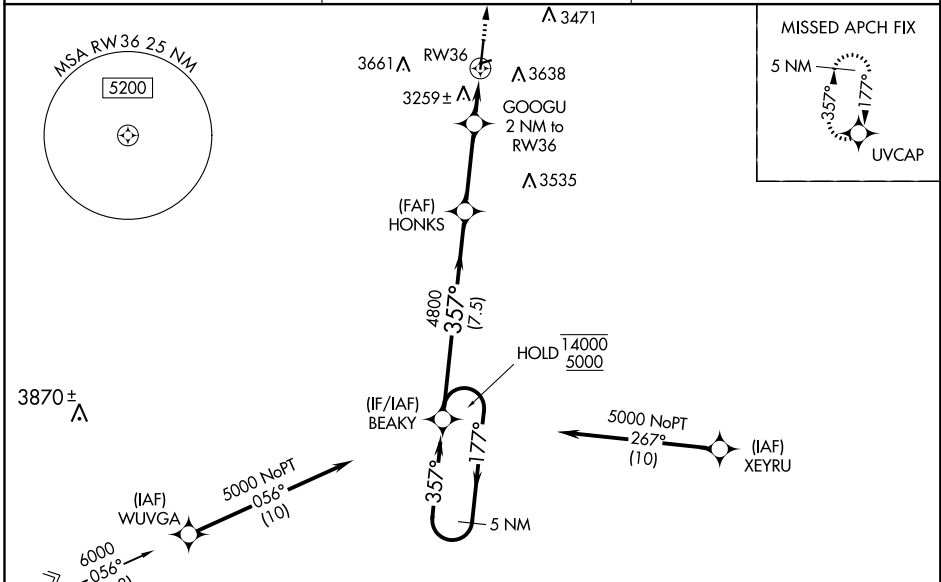
GUYMON MUNI (GUY)

RNP APCH - GPS.

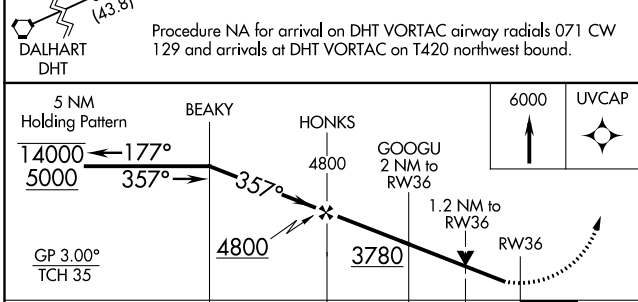
⚠ Circling NA east of Rwy 18-36. Baro-VNAV and VDP NA when using Liberal altimeter setting. Rwy 36 helicopter visibility reduction below $\frac{3}{4}$ SM NA. For uncompensated Baro-VNAV systems, LNAV/VNAV NA below -21°C or above 54°C. When local altimeter setting not received, use Liberal altimeter setting: increase LPV DA to 3487 feet; LNAV/VNAV DA to 3696 feet and all visibilities $\frac{1}{4}$ SM; increase all MDAs 120 feet and visibility LNAV Cat C $\frac{1}{4}$ SM, and Circling Cat C $\frac{1}{2}$ SM. Circling NA to Rwy 6 and 24.

MISSED APPROACH:
Climb to 6000 direct UVCAP and hold.

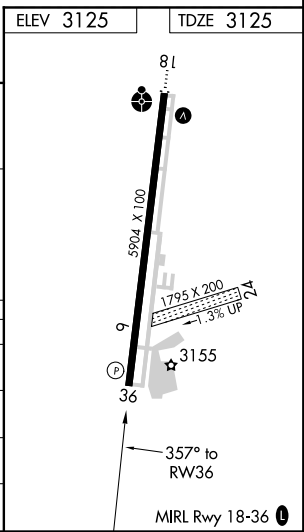
ASOS 119.925	KANSAS CITY CENTER 134.0 257.625	UNICOM 122.7 (CTAF)
------------------------	--	-------------------------------



Procedure NA for arrival on DHT VORTAC airway radials 071 CW 129 and arrivals at DHT VORTAC on T420 northwest bound.



CATEGORY	A	B	C	D
LPV DA	3375- $\frac{3}{4}$		250 (300- $\frac{3}{4}$)	NA
LNAV/VNAV DA	3584-1 $\frac{3}{8}$		459 (500-1 $\frac{3}{8}$)	NA
LNAV MDA	3520-1	395 (400-1)	3520-1 $\frac{1}{8}$ 395 (400-1 $\frac{1}{8}$)	NA
C CIRCLING	3580-1 455 (500-1)	3600-1 475 (500-1)	3980-2 $\frac{1}{2}$ 855 (900-2 $\frac{1}{2}$)	NA



SC-1, 08 SEP 2022 to 06 OCT 2022

SC-1, 08 SEP 2022 to 06 OCT 2022