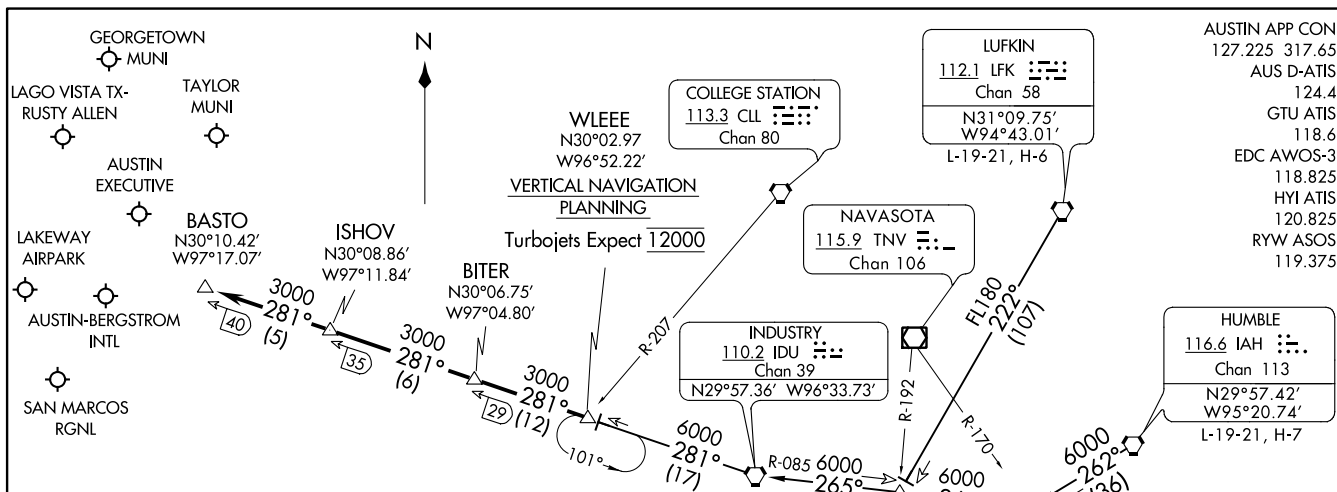


BITER NINE ARRIVAL  
(WLEEE.BITER9) 25APR19



AUSTIN APP CON  
127.225 317.65  
AUS D-ATIS  
124.4  
GTU ATIS  
118.6  
EDC AWOS-3  
118.825  
HYI ATIS  
120.825  
RYW ASOS  
119.375

(WLEEE.BITER9) 20198  
BITER NINE ARRIVAL

AL-556 (FAA)

AUSTIN, TEXAS

ARRIVAL ROUTE DESCRIPTION

**HUMBLE TRANSITION (IAH.BITER9):** From over IAH VORTAC on IAH R-262 to SHYNR INT, then on IDU R-085 to IDU VORTAC, then on IDU R-281 to WLEEE INT. Thence . . . .

**INDUSTRY TRANSITION (IDU.BITER9):** From over IDU VORTAC on IDU R-281 to WLEEE INT. Thence . . . .

**LUFKIN TRANSITION (LFK.BITER9):** From over LFK VORTAC on LFK R-222 to BOCCK INT, then on IDU R-085 to IDU VORTAC, then on IDU R-281 to WLEEE INT. Thence . . . .

. . . . From over WLEEE on IDU R-281 to BITER, then on IDU R-281 to ISHOV, then on IDU R-281 to BASTO. Expect vectors to final approach course at or prior to BASTO.

- NOTE: RADAR required.
- NOTE: DME required.
- NOTE: DME/DME/IRU or GPS equipped aircraft must file the WLEEE (RNAV) or POTRR (RNAV) STAR.


NOTE: Chart not to scale.


AUSTIN, TEXAS

# KALLA FOUR ARRIVAL

AUSTIN, TEXAS

AUSTIN APP CON  
119.0 370.85  
AUS D-ATIS  
124.4

GOOCH SPRINGS  
112.5 AGJ   
Chan 72

LLANO  
108.2 LLO   
Chan 19  
N30°47.78'-W98°47.24'  
L-19, H-6

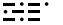
4100  
089°  
(37)

KALLA  
N30°43.26'  
W98°04.64'  
10000

GEORGETOWN  
MUNI 

120°  
(35)

LAKEWAY  
AIRPARK 

Ldg KAUS, KGTU, K3R9  
CENTEX  
112.8 CWK   
Chan 75  
N30°22.71'-W97°31.79'

10000

AUSTIN-BERGSTROM INTL 

NOTE: RADAR required.  
NOTE: DME/DME/IRU or GPS equipped turbojet  
and turboprop aircraft landing KAUS must  
file the LAIKS (RNAV) STAR.

NOTE: Chart not to scale.

## ARRIVAL ROUTE DESCRIPTION

LLANO TRANSITION (LLO.KALLA4): From over LLO VORTAC on LLO R-089  
to KALLA. Thence . . . .

. . . . from over KALLA on CWK R-300 to cross CWK VORTAC at 10000.  
Expect vectors to final approach course.

SC-3, 08 OCT 2020 to 05 NOV 2020

SC-3, 08 OCT 2020 to 05 NOV 2020

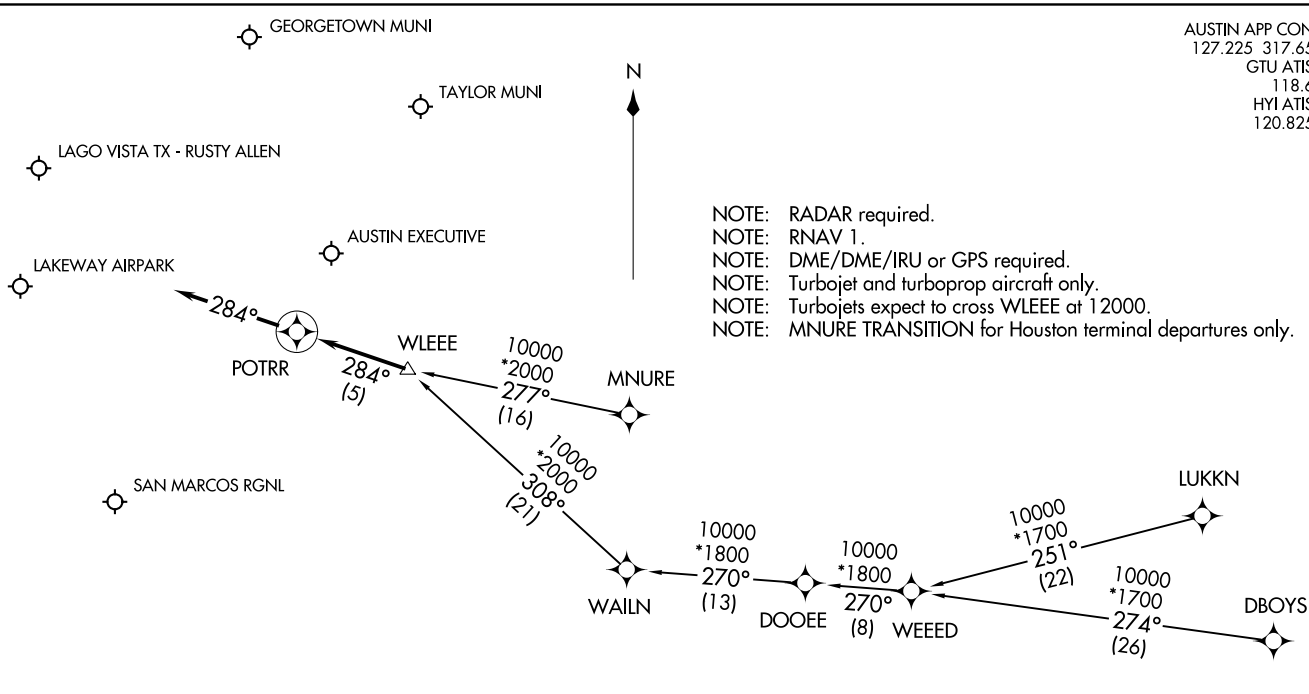
POTRR ONE ARRIVAL (RNAV)  
(WLEEE.POTRR1) 07DEC17

AUSTIN APP CON  
127.225 317.65  
GTU ATIS  
118.6  
HYI ATIS  
120.825

(WLEEE.POTRR1) 20198  
POTRR ONE ARRIVAL (RNAV)

AL-5891 (FAA)

AUSTIN, TEXAS



- NOTE: RADAR required.
- NOTE: RNAV 1.
- NOTE: DME/DME/IRU or GPS required.
- NOTE: Turbojet and turboprop aircraft only.
- NOTE: Turbojets expect to cross WLEEE at 12000.
- NOTE: MNURE TRANSITION for Houston terminal departures only.

ARRIVAL ROUTE DESCRIPTION

- DBOYS TRANSITION (DBOYS.POTRR1)
- LUKKN TRANSITION (LUKKN.POTRR1)
- MNURE TRANSITION (MNURE.POTRR1)
- WEEED TRANSITION (WEEED.POTRR1)

LANDING ALL AIRPORTS: From WLEEE on track 284° to POTRR, then on track 284°. Expect RADAR vectors to final approach course.

AUSTIN, TEXAS