

LOC/DME I-CUE <b>110.55</b> Chan <b>42 (Y)</b>	APP CRS <b>184°</b>	Rwy Idg TDZE <b>777</b> Apt Elev <b>777</b>	<b>5502</b>
--	------------------------	---	-------------

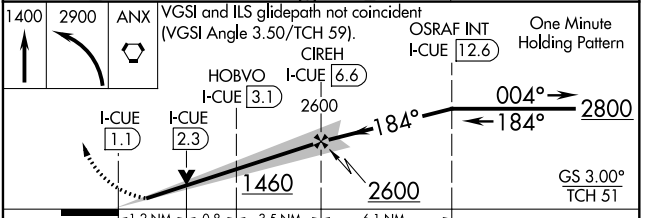
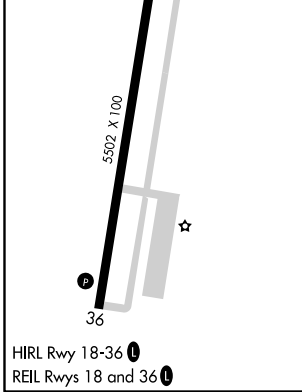
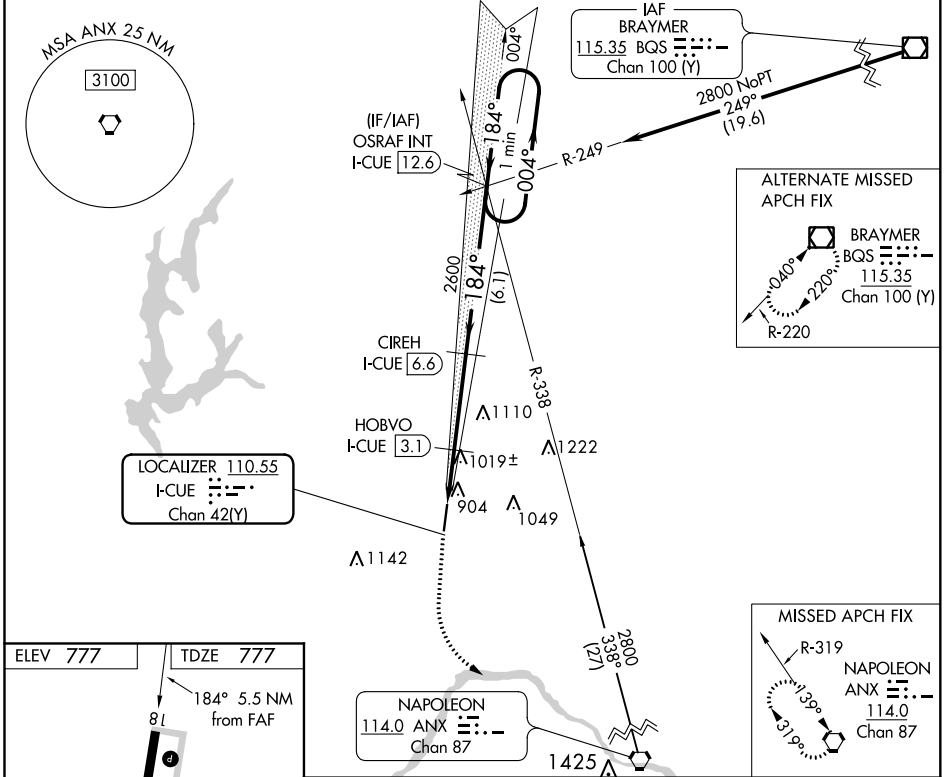
# ILS or LOC/DME RWY 18

MIDWEST NTL AIR CENTER (GPH)

**NA** Obtain local altimeter setting on CTAF; when not received use Kansas City Intl altimeter setting and increase DA 79 feet and all visibilities ¼ mile; increase all MDAs 80 feet, and Circling visibility Cat C ¼ mile.

**MISSED APPROACH:** Climb to 1400 then climbing left turn to 2900 direct ANX VORTAC and hold.

AWOS-3T <b>120.275</b>	KANSAS CITY APP CON <b>118.4 307.35</b>	CLNC DEL <b>118.2</b>	UNICOM <b>122.7 (CTAF) 0</b>
---------------------------	--	--------------------------	---------------------------------



CATEGORY	A	B	C	D
S-ILS 18	977-¾ 200 (200-¾)			NA
S-LOC 18	1280-1	503 (600-1)	1280-1½ 503 (600-1½)	NA
CIRCLING	1300-1 523 (600-1)	1320-1 543 (600-1)	1360-1½ 583 (600-1½)	NA

NC-3, 30 DEC 2021 to 27 JAN 2022

NC-3, 30 DEC 2021 to 27 JAN 2022

WAAS CH <b>70323</b> W18A	APP CRS <b>184°</b>	Rwy Idg TDZE <b>777</b> Apt Elev <b>777</b>
---------------------------------	------------------------	---

# RNAV (GPS) RWY 18

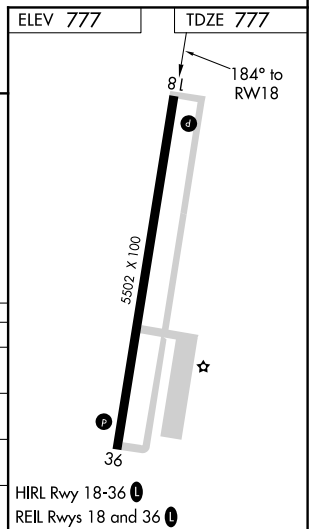
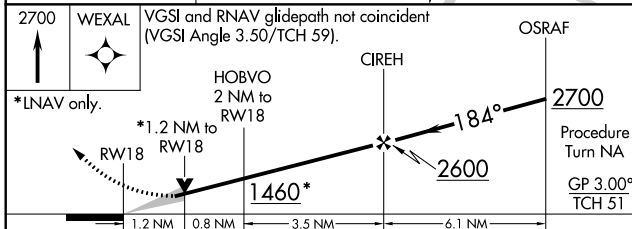
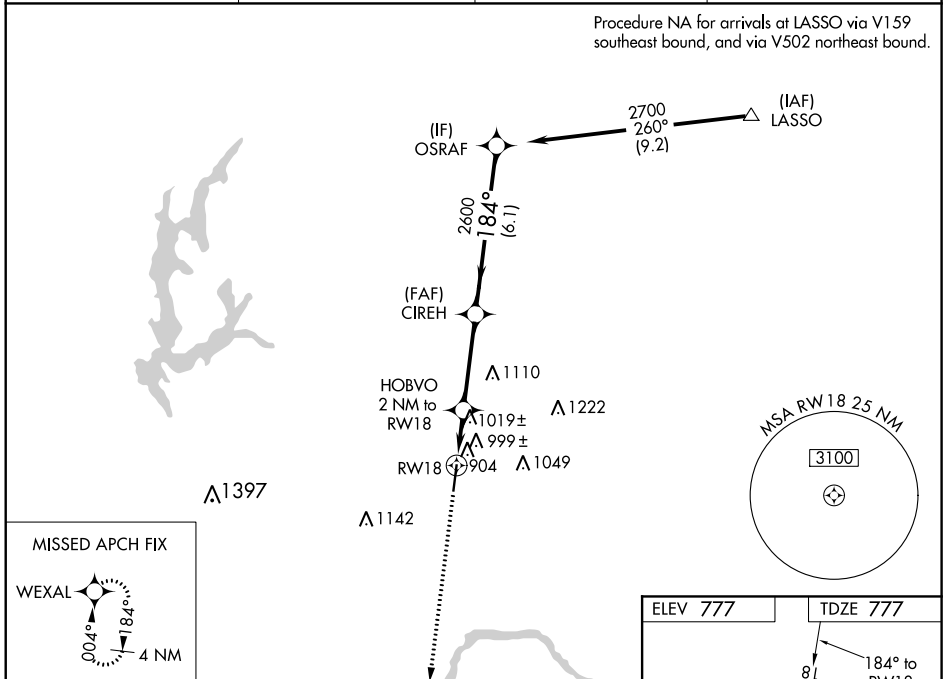
MIDWEST NTL AIR CENTER (GPH)

**NA** For uncompensated Baro-VNAV systems, LNAV/VNAV NA below -16°C (4°F) or above 54°C (130°F). DME/DME RNP-0.3 NA.  
Baro-VNAV and VDP NA when using Kansas City Intl altimeter setting.  
Obtain local altimeter setting on CTAF; when not received, use Kansas City Intl altimeter setting and increase all DAs 79 feet and all LPV and LNAV/VNAV visibilities ¼ mile; increase all MDAs 80 feet and circling visibility Cat C ¼ mile.

MISSED APPROACH: Climb to 2700 direct WEXAL and hold.

AWOS-3T <b>120.275</b>	KANSAS CITY APP CON <b>118.4 307.35</b>	CLNC DEL <b>118.2</b>	UNICOM <b>122.7 (CTAF)</b>
---------------------------	--	--------------------------	-------------------------------

Procedure NA for arrivals at LASSO via V159 southeast bound, and via V502 northeast bound.



CATEGORY	A	B	C	D
LPV DA	1189-1½ 412 (500-1½)			NA
LNAV/VNAV DA	1324-2 547 (600-2)			NA
LNAV MDA	1280-1	503 (600-1)	1280-1½ 503 (600-1½)	NA
CIRCLING	1300-1 523 (600-1)	1320-1 543 (600-1)	1360-1½ 583 (600-1½)	NA

NC-3, 30 DEC 2021 to 27 JAN 2022

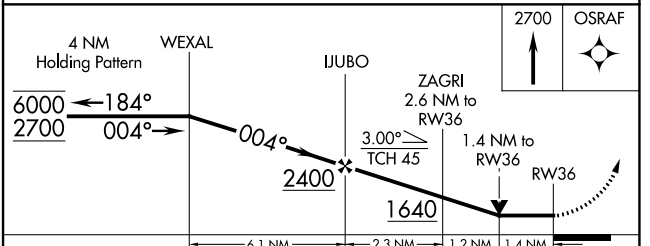
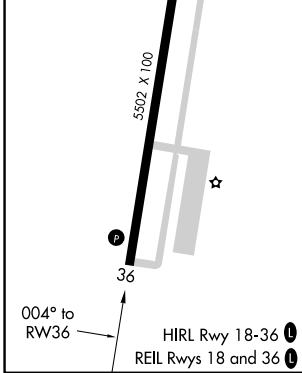
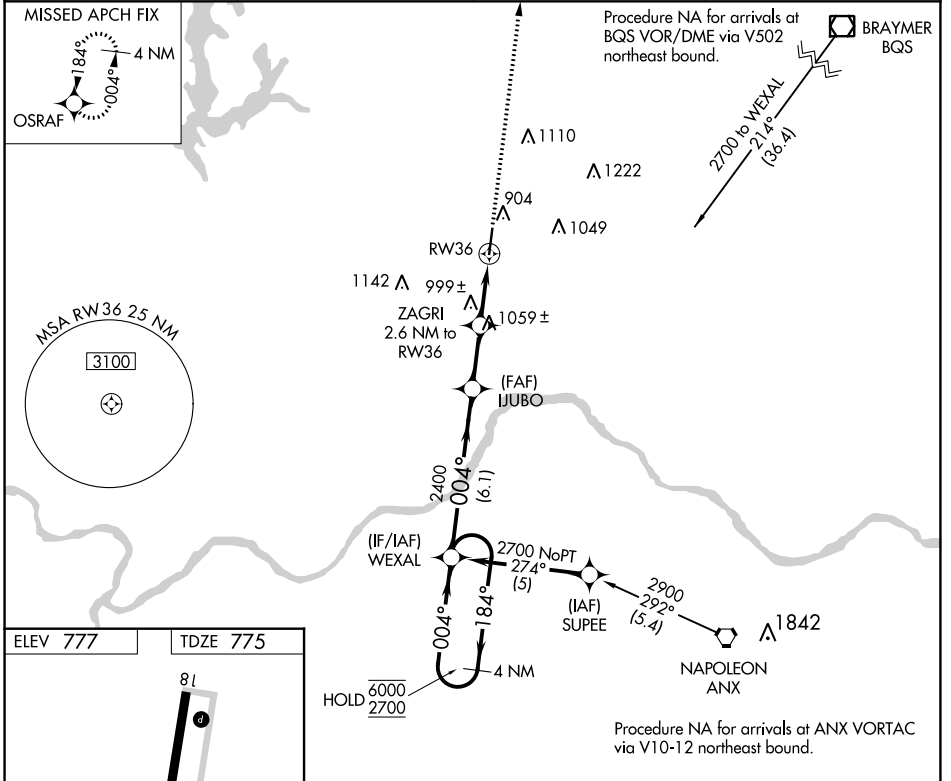
NC-3, 30 DEC 2021 to 27 JAN 2022

APP CRS	Rwy Idg	<b>5502</b>
<b>004°</b>	TDZE	<b>775</b>
	Apt Elev	<b>777</b>

# RNAV (GPS) RWY 36

MIDWEST NTL AIR CENTER (GPH)

RNP APCH-GPS.		MISSED APPROACH: Climb to 2700 direct OSRAF and hold.	
Rwy 36 helicopter visibility reduction below 3/4 SM NA.		CLNC DEL	UNICOM
AWOS-3T	KANSAS CITY APP CON	<b>118.2</b>	<b>122.7 (CTAF) 1</b>
<b>120.275</b>	<b>118.4 307.35</b>		



CATEGORY	A	B	C	D
LNAV MDA	1260-1	485 (500-1)	1260-1 3/8 485 (500-1 3/8)	NA
CIRCLING	1300-1 523 (600-1)	1320-1 543 (600-1)	1360-1 1/2 583 (600-1 1/2)	NA

NC-3, 30 DEC 2021 to 27 JAN 2022

NC-3, 30 DEC 2021 to 27 JAN 2022