

LOC I-GLS 111.7	APP CRS 138°	Rwy ldg TDZE Apt Elev 6000 5 6
---------------------------	------------------------	--


ILS or LOC RWY 14

SCHOLES INTL AT GALVESTON (GLS)

RADAR required for procedure entry at UCENU.

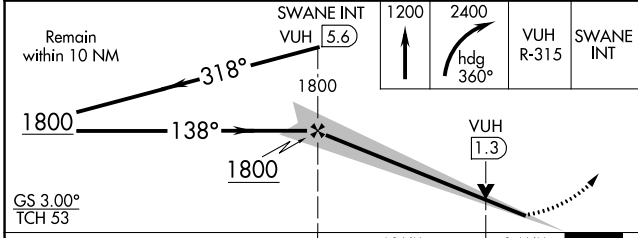
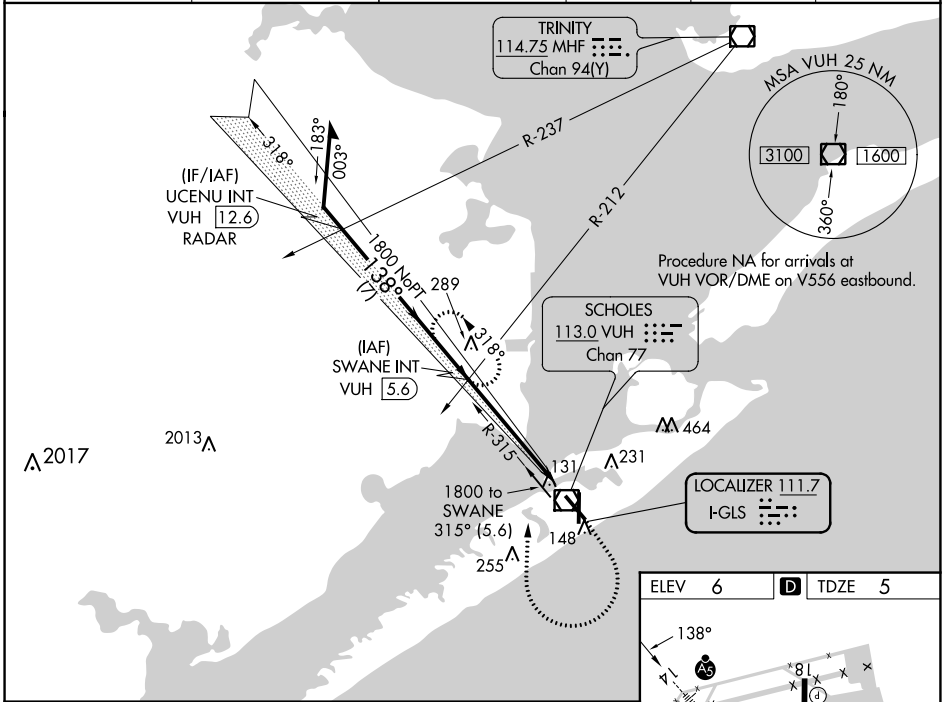
NA Circling NA east of Rwy 18 and northeast of Rwy 32. For inop ALS, increase S-LOC 14 Cat A and B visibility to 1 SM. DME from VUH VOR/DME. Simultaneous reception of I-GLS and VUH DME required. Inop table does not apply to S-ILS 14 all Cats.

MALSR

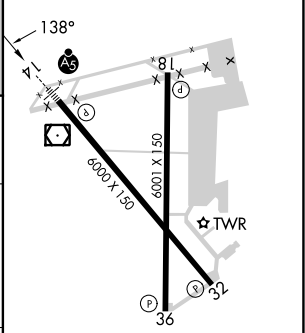


MISSED APPROACH: Climb to 1200 then climbing right turn to 2400 on heading 360° and VUH VOR/DME R-315 to SWANE INT/VUH 5.6 DME and hold, continue climb-in-hold to 2400.

ASOS 123.95	HOUSTON APP CON 134.45 284.0	GALVESTON TOWER * 120.575 (CTAF) 0	GND CON 118.625	CLNC DEL 135.35 (When twr dosed)	UNICOM 123.05
-----------------------	--	---	---------------------------	---	-------------------------



ELEV 6	TDZE 5
--------	--------



CATEGORY	A	B	C	D
S-ILS 14	205-3/4 200 (200-3/4)			
S-LOC 14	460-3/4	455 (500-3/4)	460-7/8	455 (500-7/8)
CIRCLING	500-1 494 (500-1)	520-1 514 (600-1)	620-1 3/4 614 (700-1 3/4)	620-2 614 (700-2)

REIL Rwy 18, 32, and 36					
MIRL Rwy 18-36					
HIRL Rwy 14-32					
FAF to MAP 5.5 NM					
Knots	60	90	120	150	180
Min:Sec	5:30	3:40	2:45	2:12	1:50

SC-5, 22 FEB 2024 to 21 MAR 2024

SC-5, 22 FEB 2024 to 21 MAR 2024

WAAS CH 65606 W14A	APP CRS 138°	Rwy Idg TDZE Apt Elev	6000 5 6
--	------------------------	-----------------------------	-------------------------------------

RNAV (GPS) RWY 14

SCHOLES INTL AT GALVESTON (GLS)

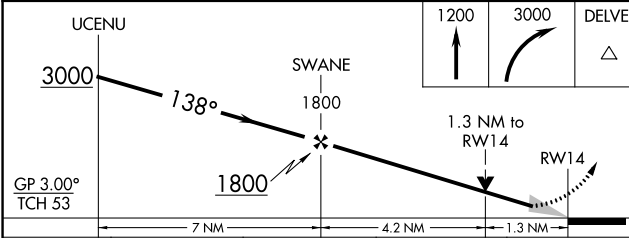
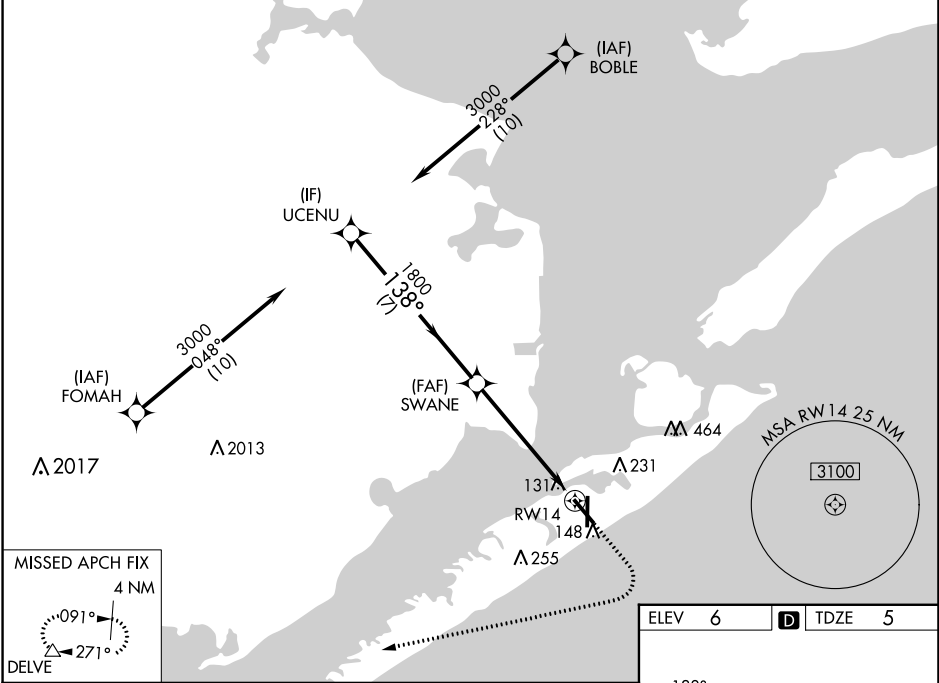
RNP APCH - GPS.

⚠ Circling NA east of Rwy 18 and northeast of Rwy 32.
⚠ For uncompensated Baro-VNAV systems, LNAV/VNAV NA below 0°C or above 54°C.

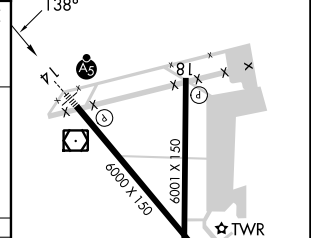
MALSR

⚠ MISSED APPROACH: Climb to 1200 then climbing right turn to 3000 direct DELVE and hold.

ASOS 123.95	HOUSTON APP CON 134.45 284.0	GALVESTON TOWER ★ 120.575 (CTAF)	GND CON 118.625	CLNC DEL 135.35 (When twr closed)	UNICOM 123.05
-----------------------	--	--	---------------------------	--	-------------------------



ELEV 6	D TDZE 5
--------	-----------------



CATEGORY	A	B	C	D
LPV DA		205-½	200 (200-½)	
LNAV/VNAV DA		342-½	337 (400-½)	
LNAV MDA	460-½	455 (500-½)	460-¾	455 (500-¾)
CIRCLING	500-1 494 (500-1)	520-1 514 (600-1)	620-1¾ 614 (700-1¾)	620-2 614 (700-2)

REIL Rwy 18, 32, and 36
 MRL Rwy 18-36
 HIRL Rwy 14-32

SC-5, 22 FEB 2024 to 21 MAR 2024

SC-5, 22 FEB 2024 to 21 MAR 2024

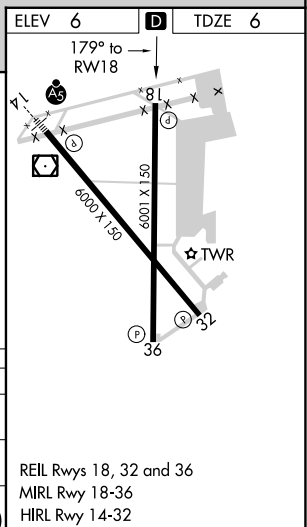
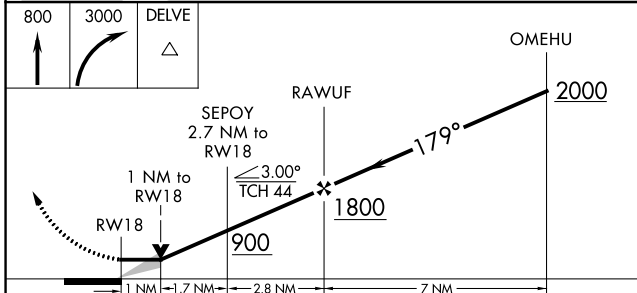
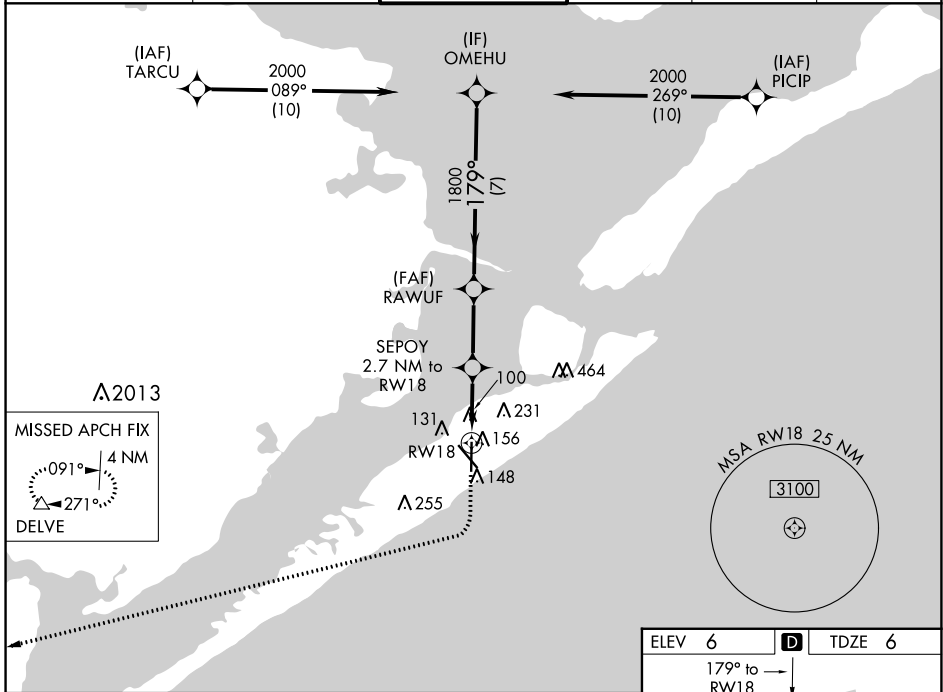
WAAS CH 82301 W18A	APP CRS 179°	Rwy Idg TDZE Apt Elev	6001 6 6
--	------------------------	-----------------------------	-------------------------------------

RNAV (GPS) RWY 18

SCHOLES INTL AT GALVESTON (GLS)

RNP APCH.		MISSED APPROACH: Climb to 800 then climbing right turn to 3000 direct DELVE and hold.		
		Circling NA east of Rwy 18 and northeast of Rwy 32.		

ASOS 123.95	HOUSTON APP CON 134.45 284.0	GALVESTON TOWER * 120.575 (CTAF)	GND CON 118.625	CLNC DEL 135.35 <small>(When twr closed)</small>	UNICOM 123.05
-----------------------	--	---	---------------------------	---	-------------------------



CATEGORY	A	B	C	D	E
LP MDA	360-1		354 (400-1)		
LNVA MDA	420-1	414 (500-1)	420-1 1/8	414 (500-1 1/8)	
CIRCLING	500-1 494 (500-1)	520-1 514 (600-1)	620-1 3/4 614 (700-1 3/4)	620-2 614 (700-2)	620-2 1/4 614 (700-2 1/4)

SC-5, 22 FEB 2024 to 21 MAR 2024

SC-5, 22 FEB 2024 to 21 MAR 2024

WAAS CH 40101 W32A	APP CRS 318°	Rwy Idg TDZE Apt Elev	6000 5 6
--	------------------------	-----------------------------	-------------------------------------

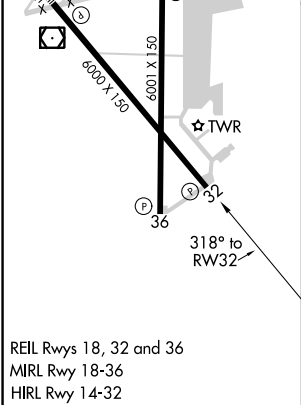
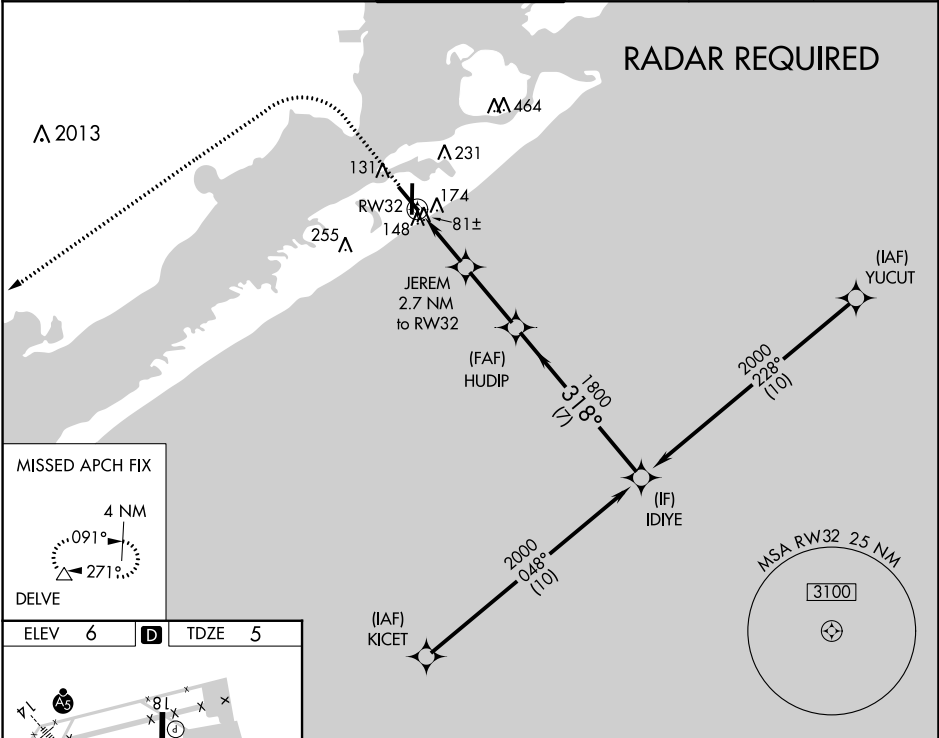
RNAV (GPS) RWY 32

SCHOLES INTL AT GALVESTON (GLS)

⚠ Circling NA east of Rwy 18 and northeast of Rwy 32. DME/DME RNP-0.3 NA. Helicopter visibility reduction below 3/4 SM NA. VDP NA with William P Hobby altimeter setting. When local altimeter setting not received, use William P Hobby altimeter setting; increase all MDA 80 feet. Increase LP Cat C/D/E visibility 1/8 SM, increase LNAV Cat C/D/E visibility 1/8 SM and increase Circling Cat C/D/E visibility 1/4 SM.

MISSED APPROACH:
Climb to 800 then climbing left turn to 3000 direct DELVE and hold.

ASOS 123.95	HOUSTON APP CON 134.45 284.0	GALVESTON TOWER * 120.575 (CTAF) 0	GND CON 118.625	CLNC DEL 135.35 (When twr closed)	UNICOM 123.05
-----------------------	--	---	---------------------------	--	-------------------------



ELEV 6	D	TDZE 5				
800	3000	DELVE	IDIYE			
JEREM 2.7 NM to RW32		HUDIP	2000			
RW32		0.9 NM to RW32	318°			
TCH 46		900	1800			
0.9 NM		1.8 NM	2.8 NM			
CATEGORY		A	B	C	D	E
LP	MDA	340-1		335 (400-1)		
LNAV	MDA	440-1	435 (500-1)	440-1 1/4		435 (500-1 1/4)
CIRCLING		500-1	520-1	620-1 3/4	620-2	620-2 1/4
		494 (500-1)	514 (600-1)	614 (700-1 3/4)	614 (700-2)	614 (700-2 1/4)

REIL Rwy 18, 32 and 36
MIRL Rwy 18-36
HIRL Rwy 14-32

WAAS CH 48831 W36A	APP CRS 359°	Rwy Idg TDZE Apt Elev	6001 5 6
---------------------------------	------------------------	-----------------------------	-------------------------------------

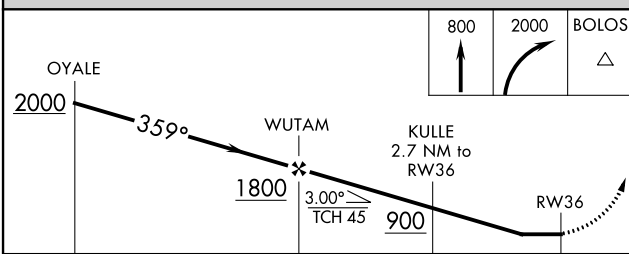
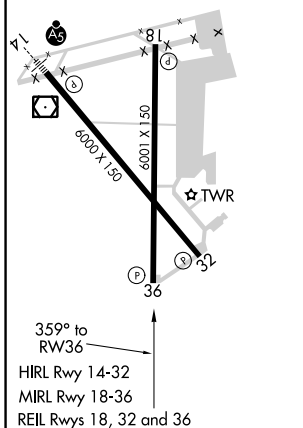
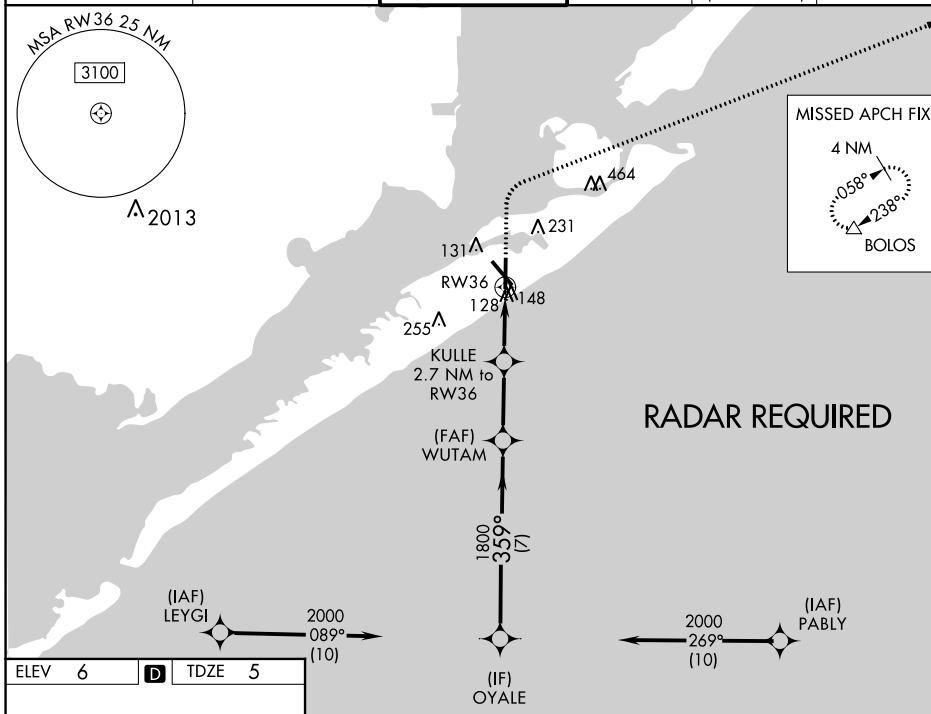
RNAV (GPS) RWY 36

SCHOLES INTL AT GALVESTON (GLS)

⚠ When VGSI inop, Straight-in/Circling Rwy 36 procedure NA at night. Circling NA east of Rwy 18 and northeast of Rwy 32. DME/DME RNP-0.3 NA. Helicopter visibility reduction below 1 SM NA. When local altimeter setting not received, use William P Hobby altimeter setting; increase all MDA 80 feet. Increase LP Cat C/D/E visibility 1/8 SM, LNAV Cat C/D/E visibility 1/8 SM and Circling Cat C/D/E visibility 1/4 SM.

MISSED APPROACH:
Climb to 800 then climbing right turn to 2000 direct BOLOS and hold.

ASOS 123.95	HOUSTON APP CON 134.45 284.0	GALVESTON TOWER * 120.575 (CTAF) 0	GND CON 118.625	CLNC DEL 135.35 (When twr closed)	UNICOM 123.05
-----------------------	--	--	---------------------------	--	-------------------------



CATEGORY		A	B	C	D	E
LP	MDA	440-1	435 (500-1)	440-1¼	435 (500-1¼)	
LNAV	MDA	460-1	455 (500-1)	460-1⅜	455 (500-1⅜)	
CIRCLING		500-1	520-1	620-1¾	620-2	620-2¼
		494 (500-1)	514 (600-1)	614 (700-1¾)	614 (700-2)	614 (700-2¼)

SC-5, 22 FEB 2024 to 21 MAR 2024

SC-5, 22 FEB 2024 to 21 MAR 2024

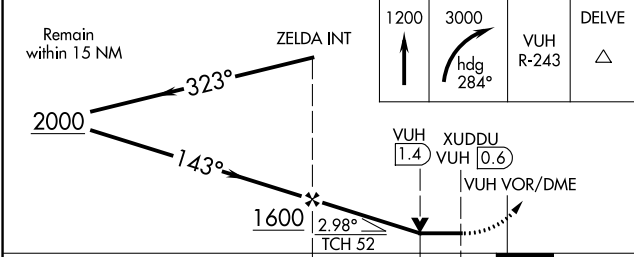
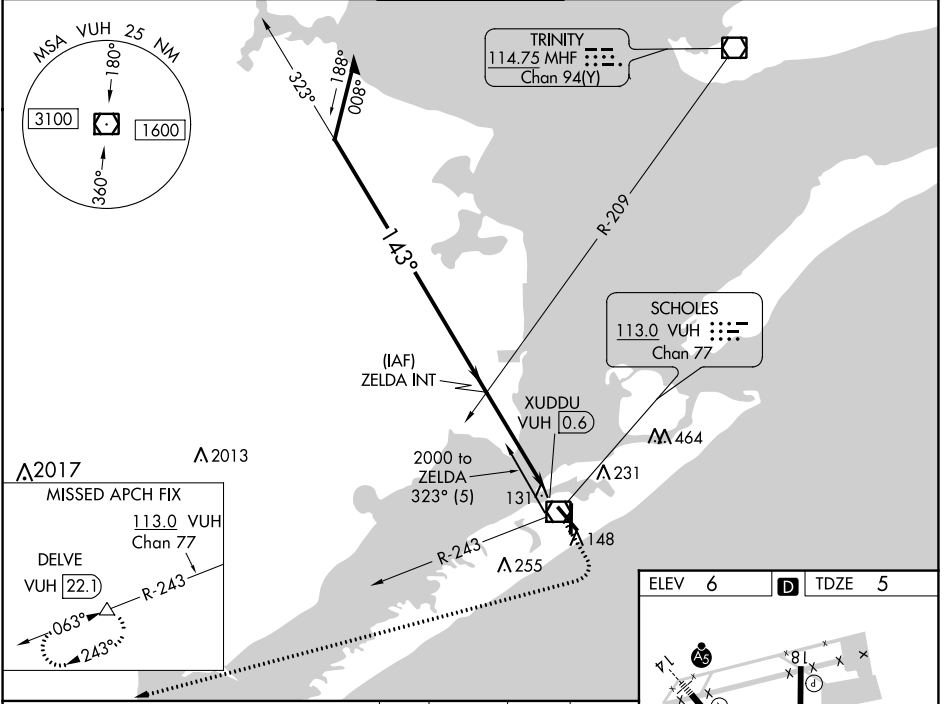
VOR/DME VUH 113.0 Chan 77	APP CRS 143°	Rwy Idg TDZE Apt Elev	6000 5 6
--	------------------------	-----------------------------	-------------------------------------

VOR RWY 14

SCHOLES INTL AT GALVESTON (GLS)

DME and RADAR required.		MALSR	MISSED APPROACH: Climb to 1200 then climbing right turn to 3000 on heading 284° and VUH VOR/DME R-243 to DELVE/22.1 DME and hold.
▼ ▲ NA	Circling NA east of Rwy 18 and northeast of Rwy 32.		

ASOS 123.95	HOUSTON APP CON 134.45 284.0	GALVESTON TOWER * 120.575 (CTAF) 0	GND CON 118.625	CLNC DEL 135.35 (When twr closed)	UNICOM 123.05
-----------------------	--	--	---------------------------	--	-------------------------



ELEV 6	D	TDZE 5
--------	---	--------

CATEGORY	A	B	C	D	E
S-14	460-1/2	455 (500-1/2)	460-7/8	455 (500-7/8)	
CIRCLING	500-1 494 (500-1)	520-1 514 (600-1)	620-1 3/4 614 (700-1 3/4)	620-2 614 (700-2)	620-2 1/4 614 (700-2 1/4)

REIL Rwys 18, 32, and 36
MRL Rwy 18-36
HIRL Rwy 14-32