

WAAS CH <b>58108</b> W <b>23A</b>	APP CRS <b>229°</b>	Rwy Idg TDZE Apt Elev	<b>6005</b> <b>37</b> <b>40</b>
---	------------------------	-----------------------------	---------------------------------------

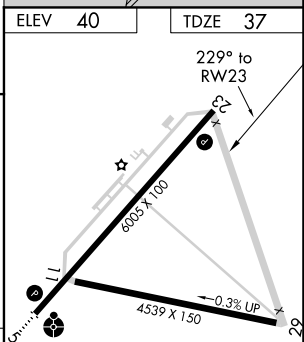
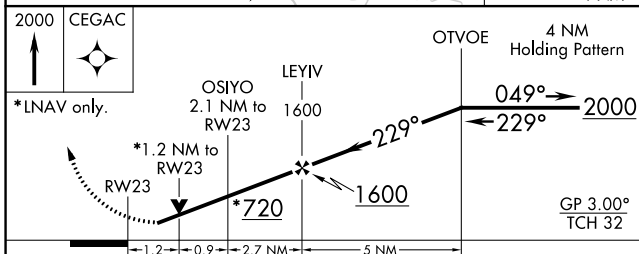
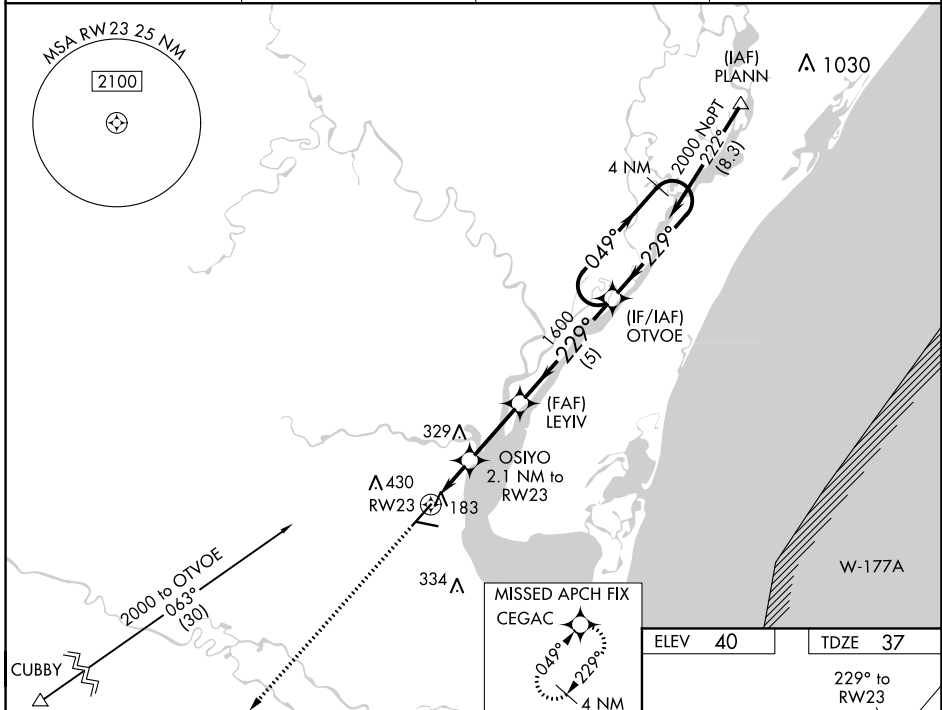
# RNAV (GPS) RWY 23

GEORGETOWN COUNTY (GGE)

RNP APCH.  
 ⚠ For uncompensated Baro-VNAV systems, LNAV/VNAV NA below -15°C or above 54°C. Circling Rwy 11, 29 NA at night. Rwy 23 helicopter visibility reduction below ¼ SM NA.

MISSED APPROACH: Climb to 2000 direct CEGAC and hold.

AWOS-3 <b>118.275</b>	MYRTLE BEACH APP CON * <b>127.4 257.95</b>	GCO <b>121.725</b>	UNICOM <b>123.0</b> (CTAF) <b>0</b>
--------------------------	---	-----------------------	--



CATEGORY	A	B	C	D
LPV DA		323-1	286 (300-1)	
LNAV/VNAV DA		347-1½	310 (400-1½)	
LNAV MDA	440-1	403 (500-1)	440-1½	403 (500-1½)
CIRCLING	500-1	520-1	740-2	740-2¼
	460 (500-1)	480 (500-1)	700 (700-2)	700 (700-2¼)

MIRL Rwy 11-29  
 MIRL Rwy 5-23 **0**  
 REIL Rwy 5 **0**

SE-2, 30 DEC 2021 to 27 JAN 2022

SE-2, 30 DEC 2021 to 27 JAN 2022

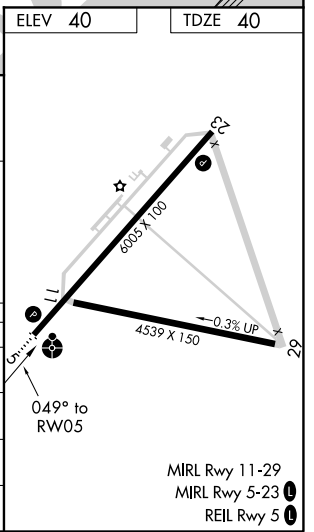
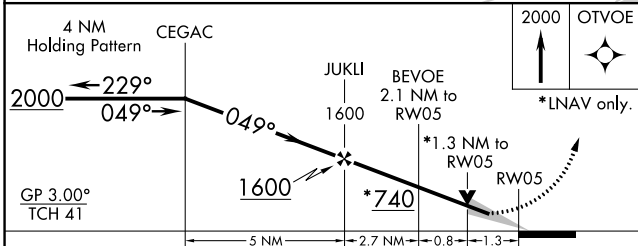
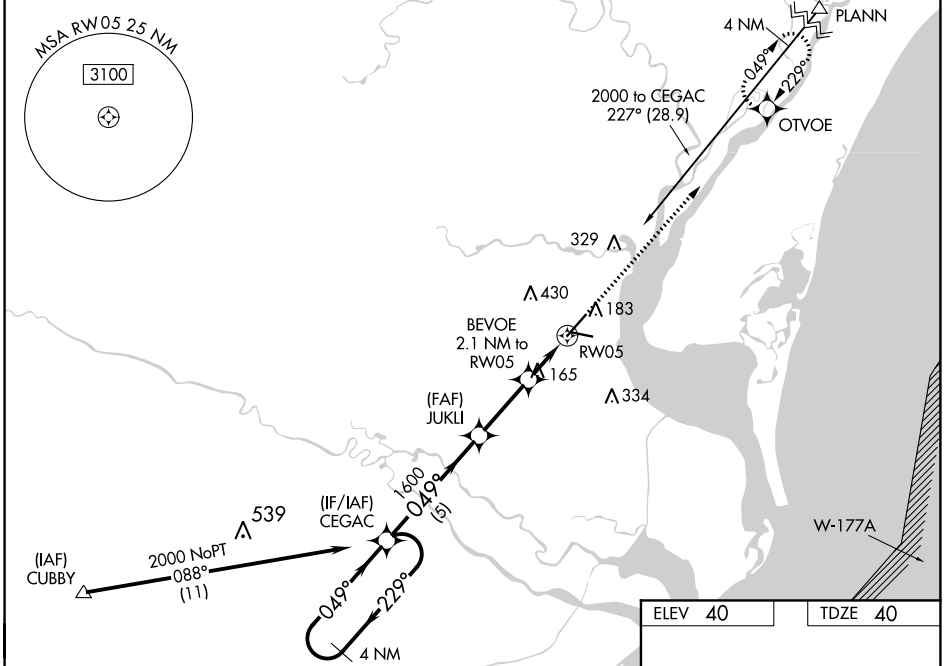
WAAS CH <b>97635</b> <b>W05A</b>	APP CRS <b>049°</b>	Rwy Idg TDZE <b>40</b> Apt Elev <b>40</b>	<b>6005</b>
--	------------------------	---	-------------

# RNAV (GPS) RWY 5

GEORGETOWN COUNTY (GGE)

RNP APCH.		ODALS	MISSED APPROACH: Climb to 2000 direct OTVOE and hold.
<p>⚠ For uncompensated Baro-VNAV systems, LNAV/VNAV NA below -15°C or above 54°C. Rwy 5 helicopter visibility reduction below ¾ SM NA. For inop ALS, increase LNAV/VNAV visibility Cats A/B to ¾ SM. Inop table does not apply to LPV all Cats. Circling Rwy 11, 29 NA at night.</p>			

AWOS-3 <b>118.275</b>	MYRTLE BEACH APP CON ★ <b>127.4 257.95</b>	GCO <b>121.725</b>	UNICOM <b>123.0 (CTAF)</b>
--------------------------	---	-----------------------	-------------------------------



CATEGORY	A	B	C	D
LPV DA		290-¾	250 (300-¾)	
LNAV/VNAV DA		304-¾	264 (300-¾)	
LNAV MDA	480-¾	440 (500-¾)	480-1⅞	440 (500-1⅞)
CIRCLING	500-1	520-1	740-2	740-2¼
	460 (500-1)	480 (500-1)	700 (700-2)	700 (700-2¼)

SE-2, 30 DEC 2021 to 27 JAN 2022

SE-2, 30 DEC 2021 to 27 JAN 2022