

APP CRS 009°	Rwy Idg TDZE Apt Elev	5000 802 803
------------------------	-----------------------------	---

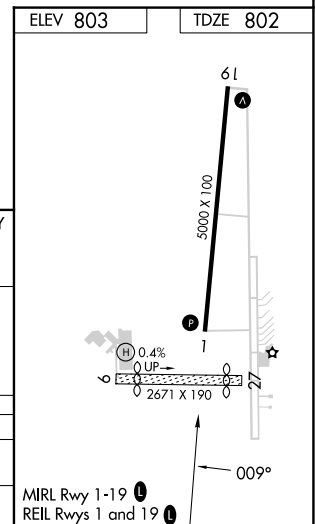
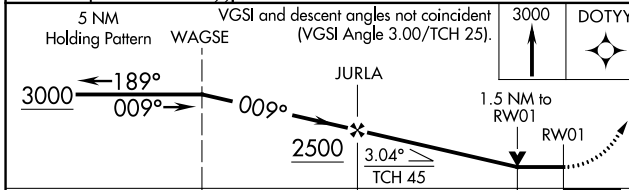
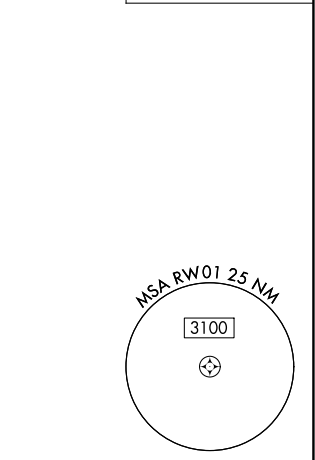
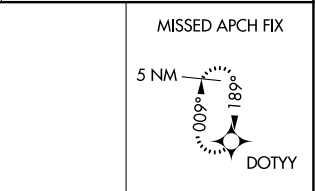
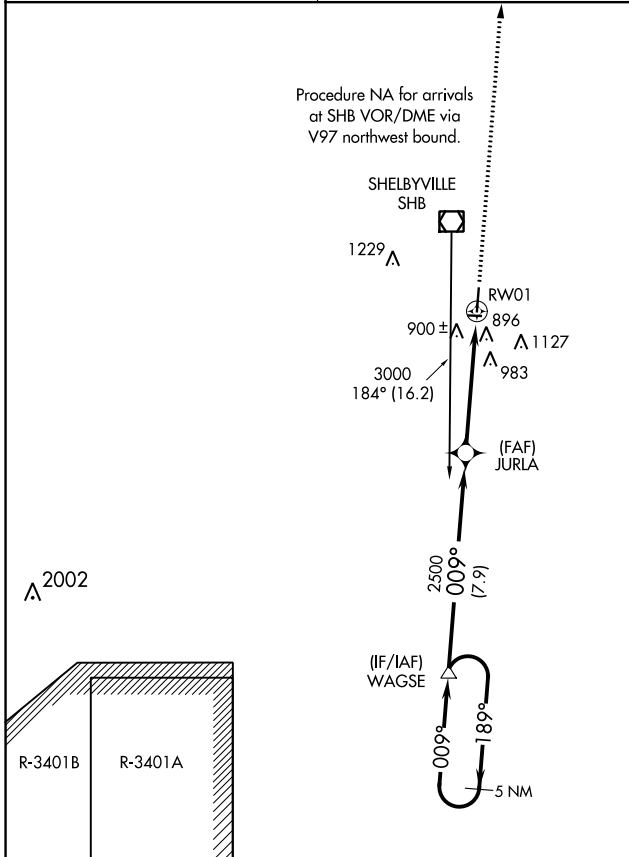
RNAV (GPS) RWY 1

SHELBYVILLE MUNI (G/EZ)

⚠ DME/DME RNP-0.3 NA. Helicopter visibility reduction below $\frac{3}{4}$ SM NA. VDP NA when using Indianapolis Intl altimeter setting. Circling Rwy 9, 27 NA at night. When local altimeter setting not received, use Indianapolis Intl altimeter setting: increase all MDA 60 feet and Circling Cat D visibility $\frac{1}{4}$ SM.

MISSED APPROACH: Climb to 3000 direct DOTYY and hold.

ASOS 121.55	INDIANAPOLIS APP CON 127.15 317.8	UNICOM 122.8 (CTAF) 0
-----------------------	---	---------------------------------



CATEGORY	A	B	C	D
LNVA MDA	1300-1	498 (500-1)	1300-1 $\frac{3}{8}$	498 (500-1 $\frac{3}{8}$)
CIRCLING	1300-1 497 (500-1)	1480-1 677 (700-1)	1480-2 677 (700-2)	1540-2 $\frac{1}{4}$ 737 (800-2 $\frac{1}{4}$)

EC-2, 22 FEB 2024 to 21 MAR 2024

EC-2, 22 FEB 2024 to 21 MAR 2024

WAAS CH 53603 W19A	APP CRS 189°	Rwy Idg TDZE Apt Elev	5000 803 803
--	------------------------	-----------------------------	---

RNAV (GPS) RWY 19

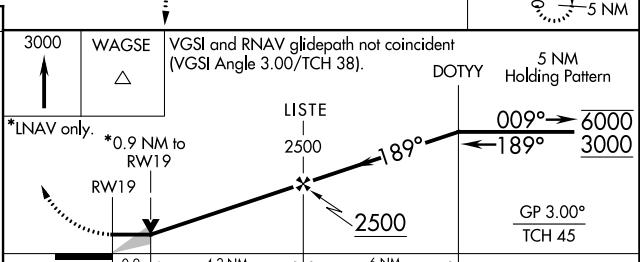
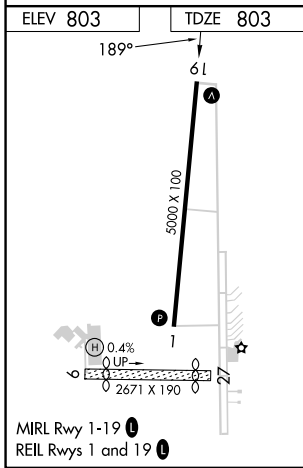
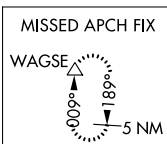
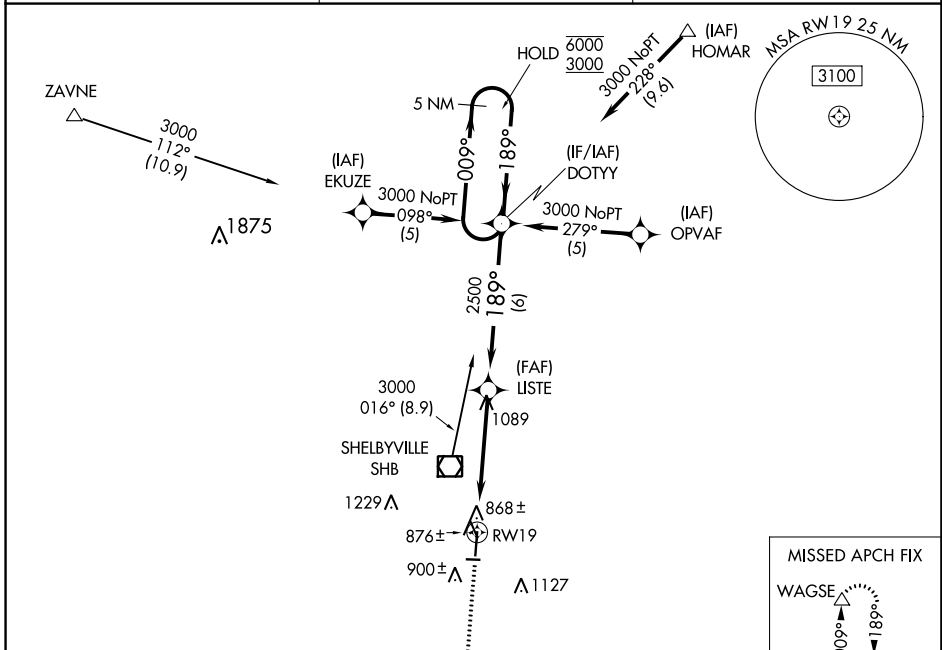
SHELBYVILLE MUNI (G/E/Z)

RNP APCH.

⚠ Circling Rwy 9, 27 NA at night. Baro-VNAV NA when using Indianapolis Intl altimeter setting. For uncompensated Baro-VNAV systems, LNAV/VNAV NA below -16°C or above 54°C. VDP NA when using Indianapolis Intl altimeter setting. When local altimeter setting not received, use Indianapolis Intl altimeter setting: increase LPV DA to 1152 feet and LNAV/VNAV DA to 1199 feet; increase all MDA 60 feet and LNAV Cat C/D visibility 1/8 SM and Circling Cat D visibility 1/4 SM.

MISSED APPROACH:
Climb to 3000 direct WAGSE and hold.

ASOS 121.55	INDIANAPOLIS APP CON 127.15 317.8	UNICOM 122.8 (CTAF) 0
-----------------------	---	---------------------------------



CATEGORY	A	B	C	D
LPV DA		1095-1	292 (300-1)	
LNAV/VNAV DA		1142-1¼	339 (400-1¼)	
LNAV MDA		1140-1	337 (400-1)	
CIRCLING	1240-1	1480-1	1480-2	1540-2¼
	437 (500-1)	677 (700-1)	677 (700-2)	737 (800-2¼)

EC-2, 22 FEB 2024 to 21 MAR 2024

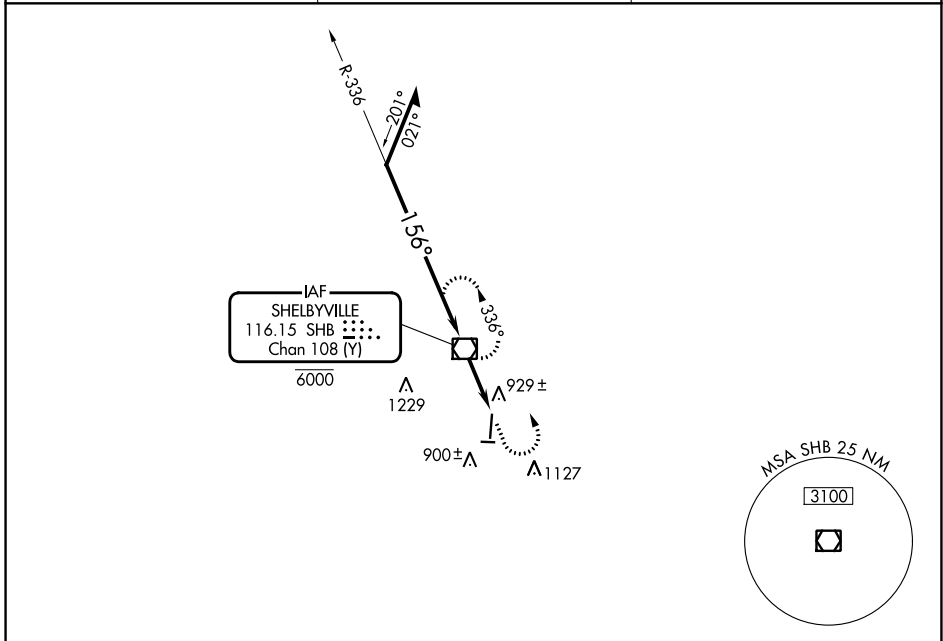
EC-2, 22 FEB 2024 to 21 MAR 2024

VOR/DME SHB 116.15 Chan 108 (Y)	APP CRS 156°	Rwy Idg TDZE Apt Elev 5000 803 803
---	------------------------	--

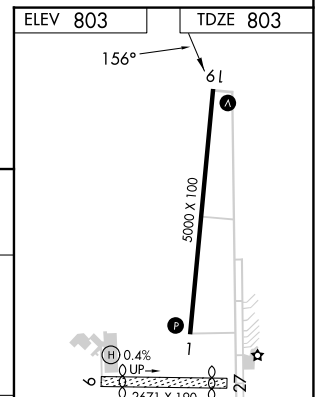
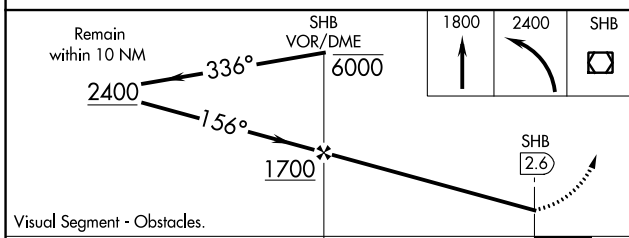
VOR RWY 19
SHELBYVILLE MUNI (G/EZ)

⚠ Circling Rwy 9, 27 NA at night. MISSED APPROACH: Climb to 1800 then climbing left turn to 2400 direct SHB VOR/DME and hold.

ASOS 121.55	INDIANAPOLIS APP CON 127.15 317.8	UNICOM 122.8 (CTAF) 0
-----------------------	---	---------------------------------



⚠ 2002



ELEV 803	TDZE 803																				
<table border="1"> <tr> <td>Remain within 10 NM</td> <td>SHB VOR/DME 6000</td> <td>1800</td> <td>2400</td> <td>SHB</td> </tr> <tr> <td>2400</td> <td>336°</td> <td>↑</td> <td>↶</td> <td>☐</td> </tr> <tr> <td>1700</td> <td>156°</td> <td colspan="3">SHB 2.6</td> </tr> <tr> <td colspan="2">Visual Segment - Obstacles.</td> <td colspan="3">2.6 NM</td> </tr> </table>		Remain within 10 NM	SHB VOR/DME 6000	1800	2400	SHB	2400	336°	↑	↶	☐	1700	156°	SHB 2.6			Visual Segment - Obstacles.		2.6 NM		
Remain within 10 NM	SHB VOR/DME 6000	1800	2400	SHB																	
2400	336°	↑	↶	☐																	
1700	156°	SHB 2.6																			
Visual Segment - Obstacles.		2.6 NM																			
CATEGORY	A	B	C	D	MRL Rwy 1-19 0																
S-19	1180-1 377 (400-1)			1180-1¼ 377 (400-1¼)	REIL Rwy 1 and 19 0																
CIRCLING	1240-1 437 (500-1)	1480-1 677 (700-1)	1480-2 677 (700-2)	1540-2¼ 737 (800-2¼)	FAF to MAP 2.6 NM																
	Knots	60	90	120	150	180															
	Min:Sec	2:36	1:44	1:18	1:02	0:52															

EC-2, 22 FEB 2024 to 21 MAR 2024

EC-2, 22 FEB 2024 to 21 MAR 2024