

▼

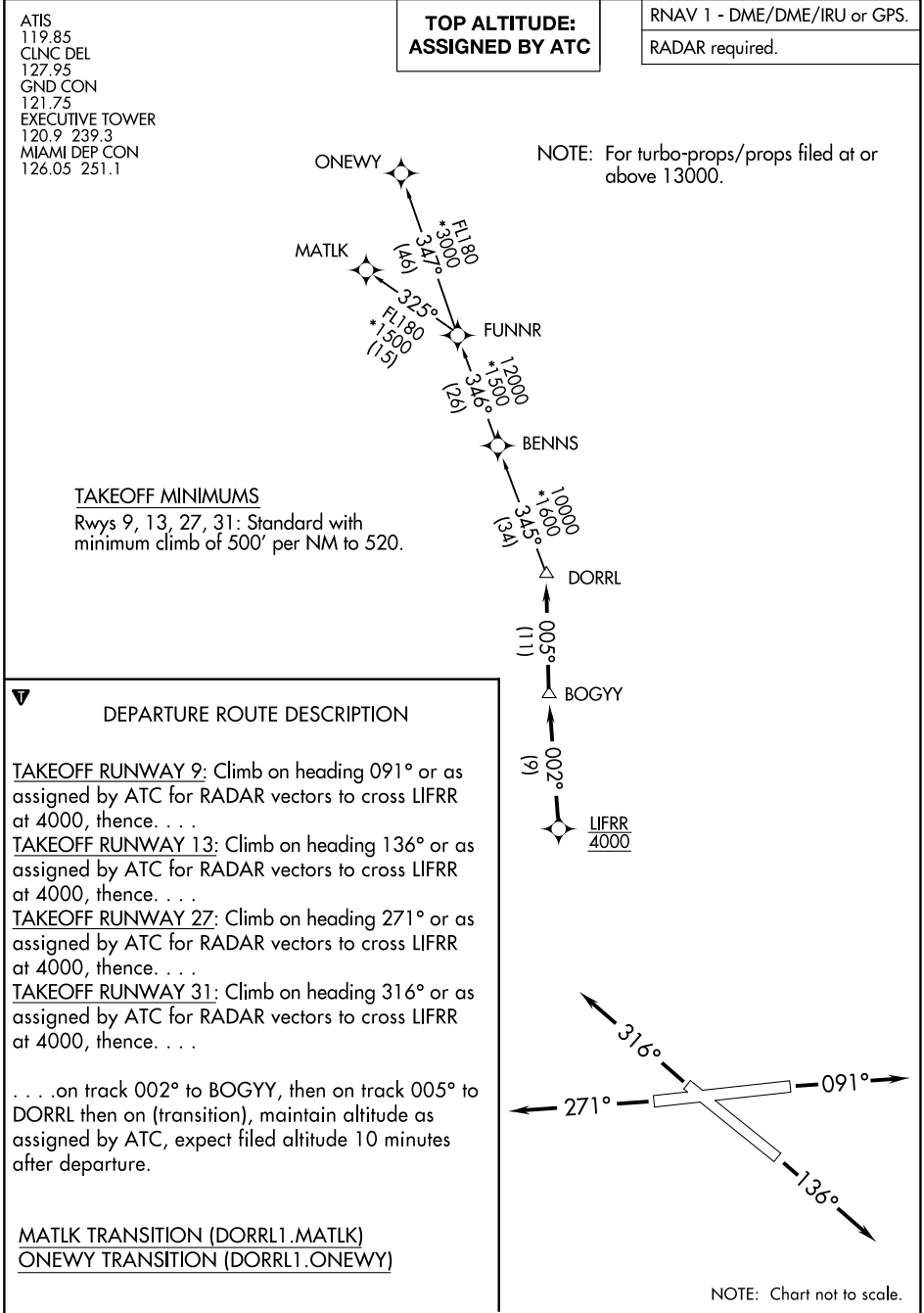
DEPARTURE ROUTE DESCRIPTION

TAKEOFF RUNWAY 9: Climb on heading 091° or as assigned by ATC for vectors to cross MRENO at 4000, thence. . .  
TAKEOFF RUNWAY 13: Climb on heading 136° or as assigned by ATC for vectors to cross MRENO at 4000, thence. . .  
TAKEOFF RUNWAY 27: Climb on heading 271° or as assigned by ATC for vectors to cross MRENO at 4000, thence. . .  
TAKEOFF RUNWAY 31: Climb on heading 316° or as assigned by ATC for vectors to cross MRENO at 4000, thence. . .  
...on track 323° to BNICE, then on assigned transition, maintain ATC assigned altitude, expect clearance to filed altitude within 10 minutes after departure.

COREA TRANSITION (BNICE1.COREA)

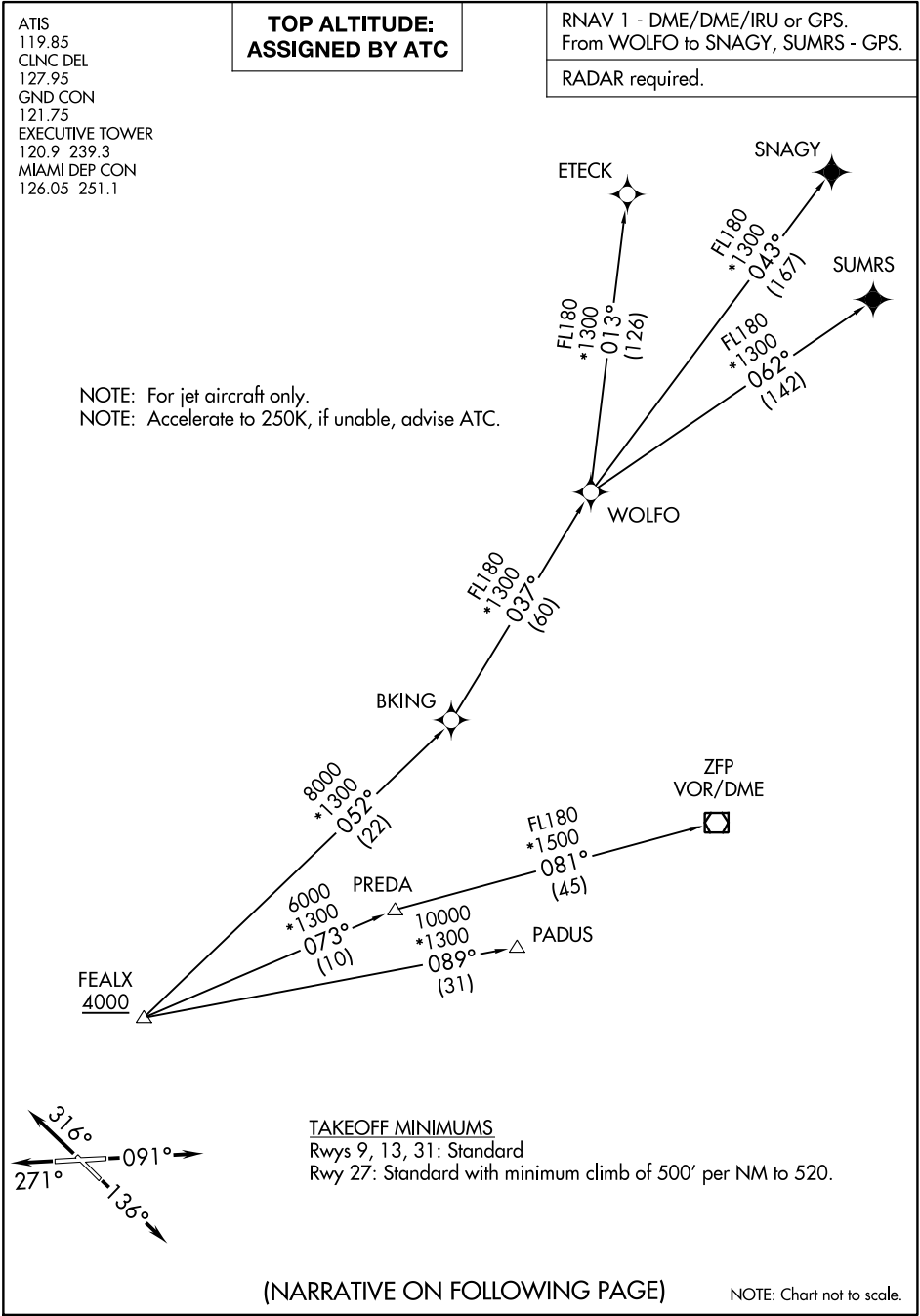
DOLIE TRANSITION (BNICE1.DOLIE)

MERKS TRANSITION (BNICE1.MERKS)



SE-3, 22 FEB 2024 to 21 MAR 2024

SE-3, 22 FEB 2024 to 21 MAR 2024



SE-3, 22 FEB 2024 to 21 MAR 2024

SE-3, 22 FEB 2024 to 21 MAR 2024

<div><div>T</div><div>DEPARTURE ROUTE DESCRIPTION</div></div> <div><div>TAKEOFF RUNWAY 9: Climb on heading 091° or as assigned by ATC for vectors to cross FEALX at or above 4000, thence. . .</div><div>TAKEOFF RUNWAY 13: Climb on heading 136° or as assigned by ATC for vectors to cross FEALX at or above 4000, thence. . .</div><div>TAKEOFF RUNWAY 27: Climb on heading 271° or as assigned by ATC for vectors to cross FEALX at or above 4000, thence. . .</div><div>TAKEOFF RUNWAY 31: Climb on heading 316° or as assigned by ATC for vectors to cross FEALX at or above 4000, thence. . .</div><div>. . .(transition). Maintain ATC assigned altitude. Expect clearance to filed altitude ten minutes after departure.</div><div><div>ETECK TRANSITION (FEALX2.ETECK)</div><div>FREEPORT TRANSITION (FEALX2.ZFP)</div><div>PADUS TRANSITION (FEALX2.PADUS)</div><div>SNAGY TRANSITION (FEALX2.SNAGY)</div><div>SUMRS TRANSITION (FEALX2.SUMRS)</div><div>WOLFO TRANSITION (FEALX2.WOLFO)</div></div></div>
---

SE-3, 22 FEB 2024 to 21 MAR 2024

SE-3, 22 FEB 2024 to 21 MAR 2024

RADAR and DME required.

**TOP ALTITUDE:  
ASSIGNED BY ATC**

NOTE: Turbojet aircraft accelerate to 250K within 7 NM of departure, if unable advise ATC.

ATIS	
119.85	
GND CON	
121.75	
CLNC DEL	
127.95	
TIVE TOWER	
20.9 239.3	
MI DEP CON	
(HROCK, ZFP)	
26.05 251.1	
(R transititon)	
45 290.325	
(parting west)	
26.05 251.1	

(FLL1.FLL) 23110  
FORT LAUDERDALE

AL-5942 (FAA)

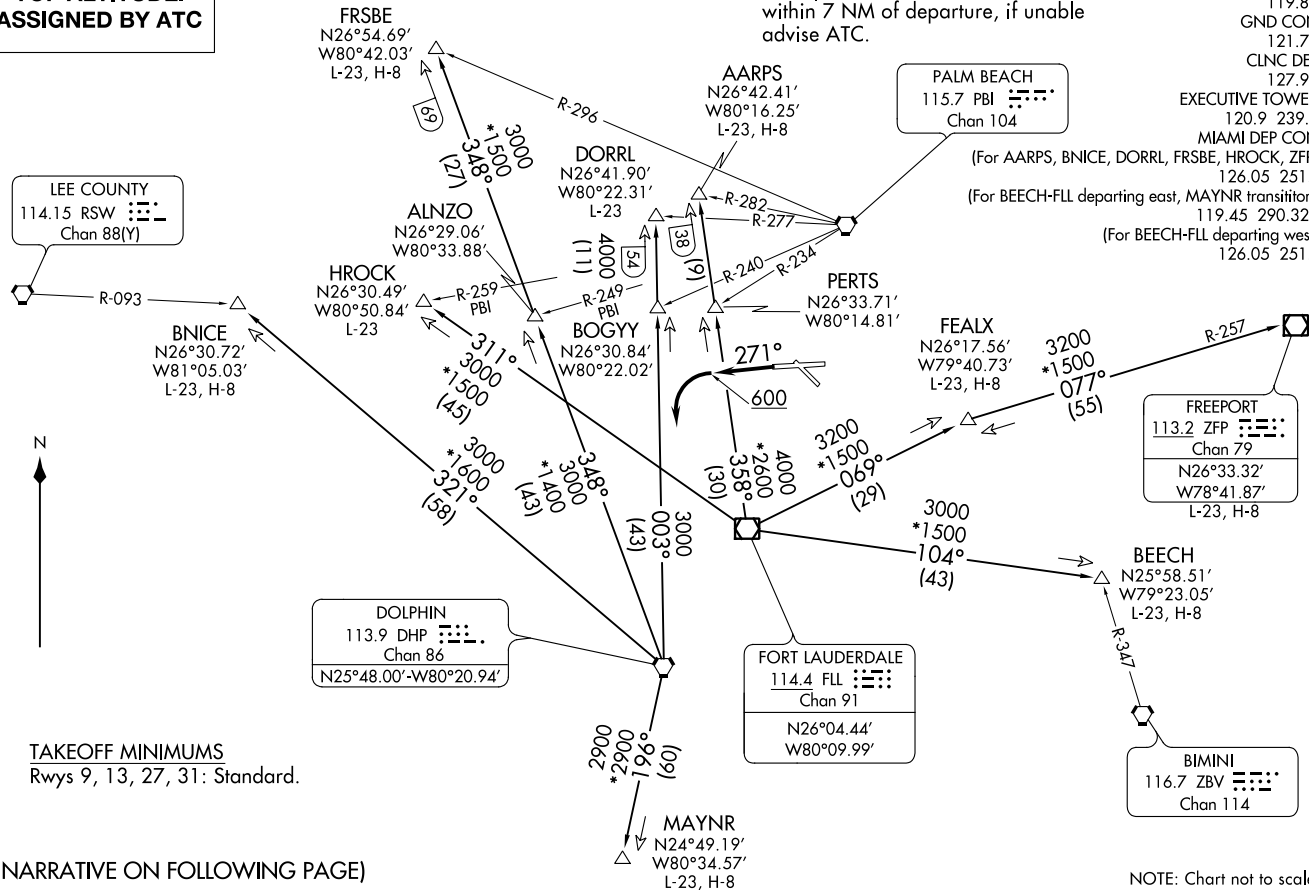
FORT LAUDERDALE EXEC (FXX)  
FORT LAUDERDALE, FLORIDA

NOTE: Chart not to scale.

(FLL1.FLL) 20APR23

FOR LAUDERDALE ONE DEPARTURE

FORT LAUDERDALE, FLORIDA  
FORT LAUDERDALE EXEC (FXE)

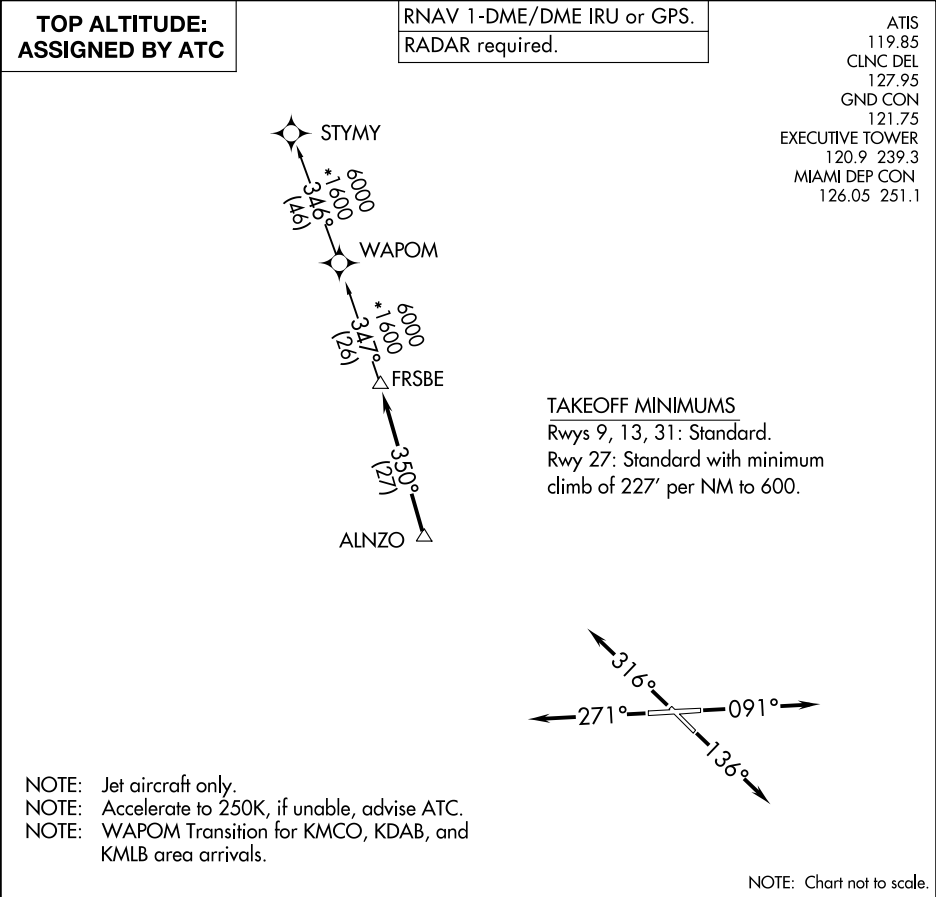


T

DEPARTURE ROUTE DESCRIPTION

TAKEOFF RUNWAYS 9, 13, 31: Climb on assigned heading, thence. . .  
TAKEOFF RUNWAY 27: Climb on heading 271° to 600 before turning left, then  
climb on assigned heading, thence. . .  
  
. . . altitude as assigned by ATC, expect RADAR vectors to appropriate transition.  
Expect further clearance to filed altitude ten (10) minutes after departure.

- AARPS TRANSITION (FLL1.AARPS): From over FLL VOR/DME on FLL R-358 to AARPS.  
BEECH TRANSITION (FLL1.BEECH): From over FLL VOR/DME on FLL R-104 to BEECH.  
BNICE TRANSITION (FLL1.BNICE): From over DHP VORTAC on DHP R-321 to BNICE.  
DORRL TRANSITION (FLL1.DORRL): From over DHP VORTAC on DHP R-003 to DORRL.  
FEALX TRANSITION (FLL1.FEALX): From over FLL VOR/DME on FLL R-069 to FEALX.  
FREEPORT TRANSITION (FLL1.ZFP): From over FLL VOR/DME on FLL R-069 to FEALX, then  
on ZFP R-257 to ZFP VOR/DME.  
FRSBE TRANSITION (FLL1.FRSBE): From over DHP VORTAC on DHP R-348 to FRSBE.  
HROCK TRANSITION (FLL1.HROCK): From over FLL VOR/DME on FLL R-311 to HROCK.  
MAYNR TRANSITION (FLL1.MAYNR): From over DHP VORTAC on DHP R-196 to MAYNR.



GABOW TWO DEPARTURE (RNAV)  
(GABOW2.GABOW) 19MAY22

FORT LAUDERDALE, FLORIDA  
FORT LAUDERDALE EXEC (FXXE)

**TOP ALTITUDE:  
ASSIGNED BY ATC**

RNAV 1 - DME/DME/IRU or GPS.  
From KRAFT - GPS.

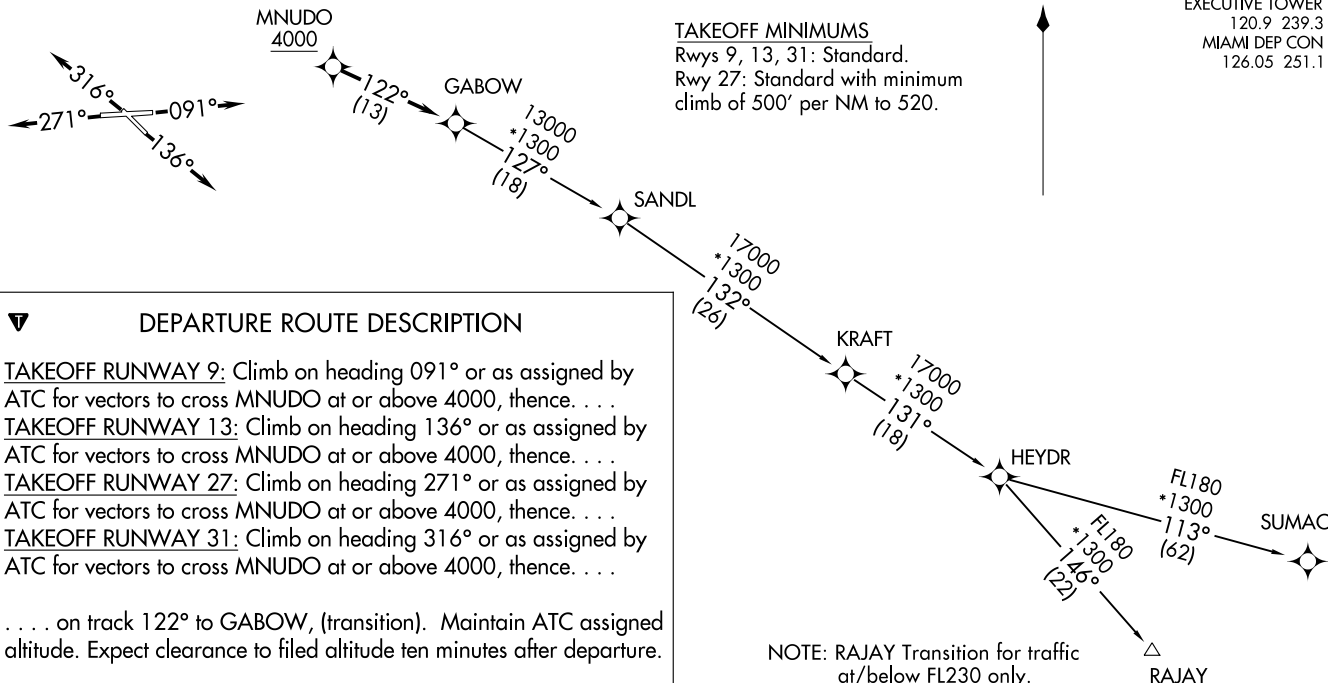
RADAR required.

ATIS  
119.85  
CLNC DEL  
127.95  
GND CON  
121.75  
EXECUTIVE TOWER  
120.9 239.3  
MIAMI DEP CON  
126.05 251.1

#### TAKEOFF MINIMUMS

Rwys 9, 13, 31: Standard.

Rwy 27: Standard with minimum  
climb of 500' per NM to 520.



#### DEPARTURE ROUTE DESCRIPTION

TAKEOFF RUNWAY 9: Climb on heading 091° or as assigned by ATC for vectors to cross MNUDO at or above 4000, thence. . . .

TAKEOFF RUNWAY 13: Climb on heading 136° or as assigned by ATC for vectors to cross MNUDO at or above 4000, thence. . . .

TAKEOFF RUNWAY 27: Climb on heading 271° or as assigned by ATC for vectors to cross MNUDO at or above 4000, thence. . . .

TAKEOFF RUNWAY 31: Climb on heading 316° or as assigned by ATC for vectors to cross MNUDO at or above 4000, thence. . . .

. . . . on track 122° to GABOW, (transition). Maintain ATC assigned altitude. Expect clearance to filed altitude ten minutes after departure.

RAJAY TRANSITION (GABOW2.RAJAY)

SANDL TRANSITION (GABOW2.SANDL)

SUMAC TRANSITION (GABOW2.SUMAC)

NOTE: RAJAY Transition for traffic  
at/below FL230 only.

NOTE: Chart not to scale.

(GABOW2.GABOW) 22139

AL-5942 (FAA)

FORT LAUDERDALE EXEC (FXXE)  
FORT LAUDERDALE, FLORIDA



ATIS  
119.85  
CLNC DEL  
127.95  
GND CON  
121.75  
EXECUTIVE TOWER  
120.9 239.3  
MIAMI DEP CON  
126.05 251.1

TOP ALTITUDE:  
ASSIGNED BY ATC

RNAV 1-DME/DME/IRU or GPS.  
RADAR required.

TAKEOFF MINIMUMS

Rwys 9, 13, 31: Standard.

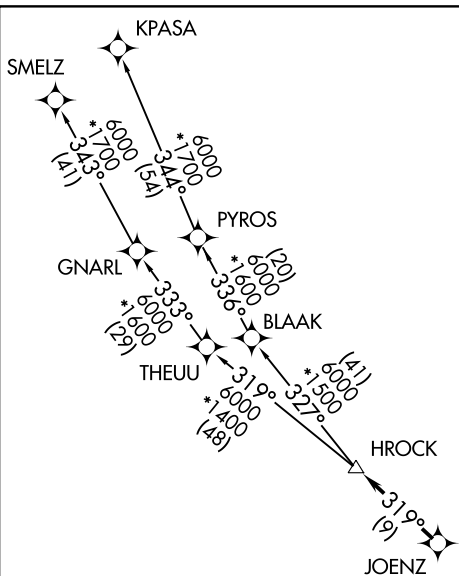
Rwy 27: Standard with minimum climb of 227' per NM to 600.

NOTE: Jet aircraft only.

NOTE: Accelerate to 250K, if unable, advise ATC.

NOTE: Chart not to scale.

(NARRATIVE ON FOLLOWING PAGE)





DEPARTURE ROUTE DESCRIPTION

TAKEOFF RUNWAY 9: Climb on heading 091° or as assigned for RADAR vectors to cross JOENZ, thence. . . .

TAKEOFF RUNWAY 13: Climb on heading 136° or as assigned for RADAR vectors to cross JOENZ, thence. . . .

TAKEOFF RUNWAY 27: Climb on heading 271° or as assigned for RADAR vectors to cross JOENZ, thence. . . .

TAKEOFF RUNWAY 31: Climb on heading 316° or as assigned for RADAR vectors to cross JOENZ, thence. . . .

. . . .on track 319° to HROCK, then on assigned transition. Maintain ATC assigned altitude, expect filed altitude within 10 minutes after departure.

KPASA TRANSITION (HROCK2.KPASA)  
SMELZ TRANSITION (HROCK2.SMELZ)

SE-3, 22 FEB 2024 to 21 MAR 2024

SE-3, 22 FEB 2024 to 21 MAR 2024

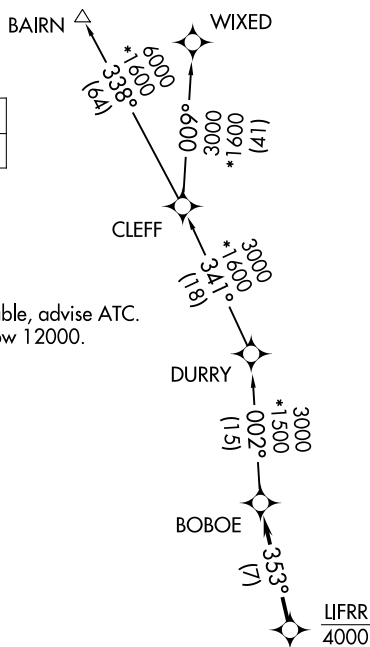
**TOP ALTITUDE:  
ASSIGNED BY ATC**

RNAV 1 - DME/DME/IRU or GPS.

RADAR required.

NOTE: Jet aircraft only.  
NOTE: Accelerate to 250K, if unable, advise ATC.  
NOTE: For aircraft filed at or below 12000.

ATIS	
119.85	
CLNC DEL	
127.95	
GND CON	
121.75	
EXECUTIVE TOWER	
120.9	239.3
MIAMI DEP CON	
126.05	251.1

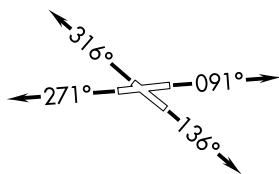


## TAKEOFF MINIMUMS

Rwys 9, 13, 31: Standard.

Rwy 27: Standard with minimum climb of 500' per NM to 520.

NOTE: Chart not to scale.



## DEPARTURE ROUTE DESCRIPTION

**TAKEOFF RUNWAY 9:** Climb on heading 091° or as assigned by ATC for vectors to cross UFRR at 4000, thence. . .

**TAKEOFF RUNWAY 13:** Climb on heading 136° or as assigned by ATC for vectors to cross  
**UFRR at 4000, thence. . .**

TAKEOFF RUNWAY 27: Climb on heading 271° or as assigned by ATC for vectors to cross  
LIFRR at 4000, thence. . .

TAKEOFF RUNWAY 31: Climb on heading 316° or as assigned by ATC for vectors to cross  
UFRR at 4000, thence. . .

...on track 353° to BOBOE, then on assigned transition, maintain ATC assigned altitude, expect clearance to filed altitude within 10 minutes after departure.

BAIRN TRANSITION (LIFRR1.BAIRN)

WIXED TRANSITION (LIFRR1.WIXED)

LIFRR ONE DEPARTURE (RNAV)

(LIFRR1.LIFRR) 19MAY22

FORT LAUDERDALE, FLORIDA

FORT LAUDERDALE EXEC (FXE)

SE-3, 22 FEB 2024 to 21 MAR 2024

MAYNR ONE DEPARTURE (RNAV)  
(MAYNR1, MAYNR) 19MAY22

FORT LAUDERDALE, FLORIDA  
FORT LAUDERDALE EXEC (FXXE)

ATIS  
119.85  
CLNC DEL  
127.95  
GND CON  
121.75  
EXECUTIVE TOWER  
120.9 239.3  
MIAMI DEP CON  
126.05 251.1

RNAV1 - DME/DME/IRU or GPS.  
From SLIPT to MAXIM: RNAV 1- GPS.  
From SLIPT to CANOA: RNAV 1- GPS.  
RADAR required.

**TOP ALTITUDE:  
ASSIGNED BY ATC**

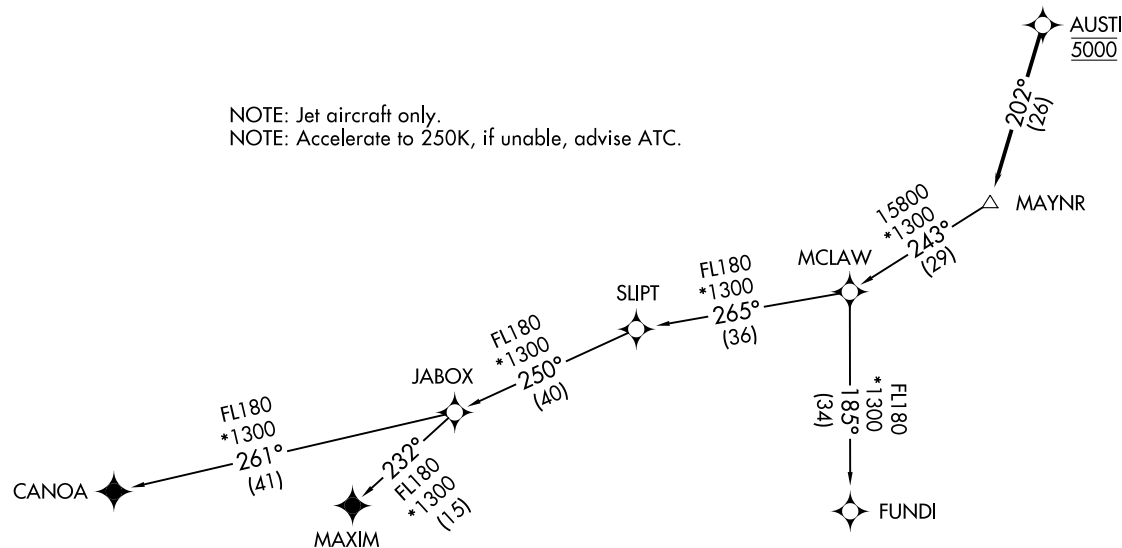


### TAKEOFF MINIMUMS

Rwys 9, 13, 27, 31: Standard with minimum climb of 500' per NM to 520.

NOTE: Jet aircraft only.

NOTE: Accelerate to 250K, if unable, advise ATC.



NOTE: Chart not to scale.

(NARRATIVE ON FOLLOWING PAGE)

(MAYNR1, MAYNR) 22139  
MAYNR ONE DEPARTURE (RNAV)

AL-5942 (FAA)

FORT LAUDERDALE EXEC (FXXE)  
FORT LAUDERDALE, FLORIDA



DEPARTURE ROUTE DESCRIPTION

TAKEOFF RUNWAYS 9, 13, 27, 31: Climb on heading assigned by ATC for vectors to cross AUSTI at 5000, thence. . . .

. . . .on track 202° to MAYNR, then on assigned transition, maintain altitude as assigned by ATC, expect clearance to filed altitude within 10 minutes after departure.

CANOA TRANSITION (MAYNR1.CANOA)

FUNDI TRANSITION (MAYNR1.FUNDI)

MAXIM TRANSITION (MAYNR1.MAXIM)

SE-3, 22 FEB 2024 to 21 MAR 2024

SE-3, 22 FEB 2024 to 21 MAR 2024