

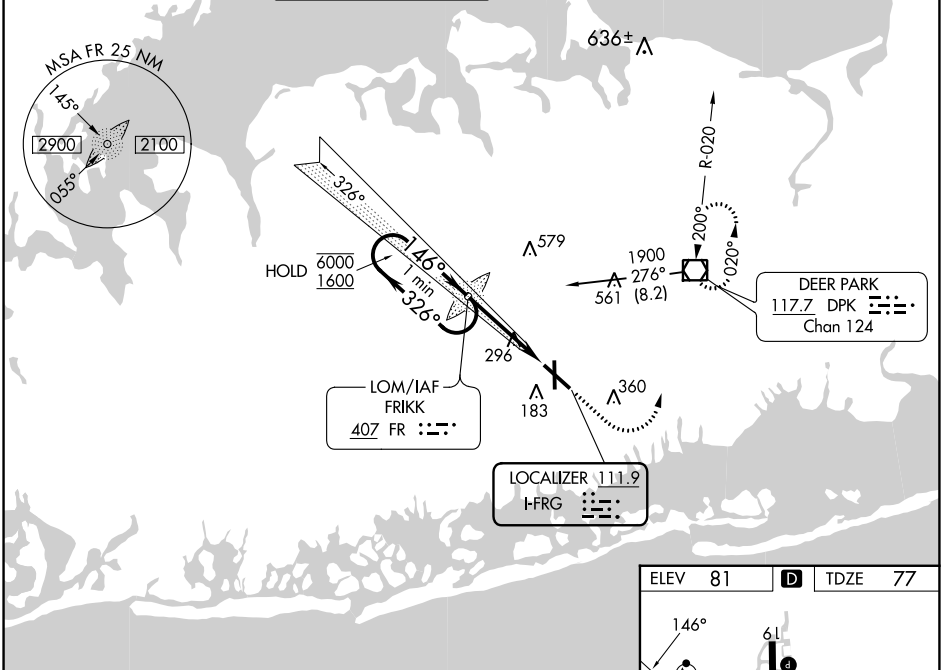
LOC I-FRG	APP CRS	Rwy Ldg TDZE	<b>6157</b>
<b>111.9</b>	<b>146°</b>	Apt Elev	<b>77</b>
			<b>81</b>

# ILS or LOC RWY 14

REPUBLIC (F'RG)

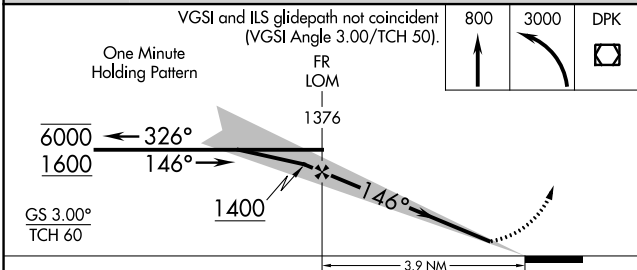
	MALSF 	MISSED APPROACH: Climb to 800 then climbing left turn to 3000 direct DPK VOR/DME and hold, continue climb-in-hold to 3000.

ATIS	NEW YORK APP CON	REPUBLIC TOWER ★	GND CON	CLNC DEL	CLNC DEL	UNICOM
<b>126.65</b>	<b>128.125 269.0</b>	<b>118.8 (CTAF) 279.65</b>	<b>121.6 269.6</b>	<b>128.25</b>	<b>128.25</b> (When twr closed)	<b>122.95</b>



NE-2, 22 FEB 2024 to 21 MAR 2024

NE-2, 22 FEB 2024 to 21 MAR 2024



ELEV 81	D	TDZE 77
---------	---	---------

MIRL Rwy 1-19

HIRL Rwy 14-32

REIL Rws 1, 19, and 32

FAF to MAP 3.9 NM

Knots	60	90	120	150	180
Min:Sec	3:54	2:36	1:57	1:34	1:18

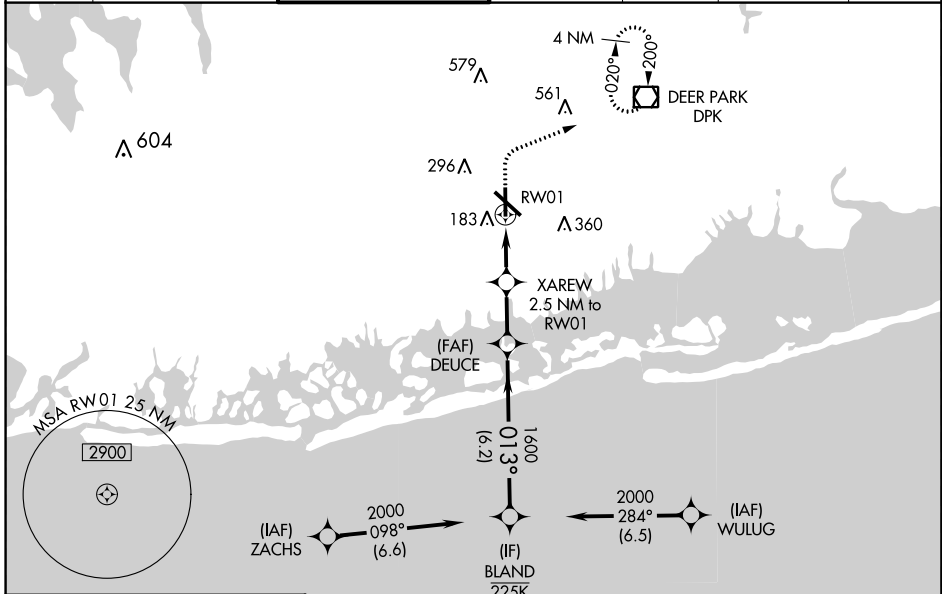
CATEGORY	A	B	C	D
S-ILS 14	277- <sup>3</sup> / <sub>4</sub> 200 (200- <sup>3</sup> / <sub>4</sub> )			
S-LOC 14	560- <sup>3</sup> / <sub>4</sub>	483 (500- <sup>3</sup> / <sub>4</sub> )	560-1 <sup>1</sup> / <sub>8</sub>	483 (500-1 <sup>1</sup> / <sub>8</sub> )
CIRCLING	640-1 559 (600-1)	720-1 639 (700-1)	860-2 <sup>1</sup> / <sub>4</sub> 779 (800-2 <sup>1</sup> / <sub>4</sub> )	1000-3 919 (1000-3)

WAAS CH <b>82524</b> <b>W01A</b>	APP CRS <b>013°</b>	Rwy Idg <b>5116</b> TDZE <b>72</b> Apt Elev <b>80</b>
--	------------------------	---

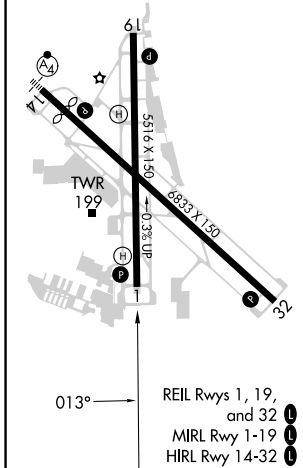
# RNAV (GPS) RWY 1

REPUBLIC (F/RG)

RNP APCH - GPS.		MISSED APPROACH: (Do not exceed 190K until DPK VOR/DME) Climb to 800 then climbing right turn to 3000 direct DPK VOR/DME and hold, continue climb-in-hold to 3000.						
For uncompensated Baro-VNAV systems, LNAV/VNAV NA below -12°C or above 54°C. Rwy 1 helicopter visibility reduction below 3/4 SM NA.		ATIS <b>126.65</b>	NEW YORK APP CON <b>128.125 269.0</b>	REPUBLIC TOWER ★ <b>118.8 (CTAF) 279.65</b>	GND CON <b>121.6 269.6</b>	CLNC DEL <b>128.25</b>	CLNC DEL <b>128.25</b> (When twr closed)	UNICOM <b>122.95</b>



ELEV 80	<b>D</b>	TDZE 72
---------	----------	---------



800	3000	DPK	VGSi and RNAV glidepath not coincident (VGSi Angle 3.09°/TCH 44).			
				BLAND DEUCE XAREW 2.5 NM to RW01 RW01 1600 880 2000 013° GP 3.00° TCH 37		
1.1		1.4 NM		2.2 NM		6.2 NM
CATEGORY	A	B	C	D		
LPV DA	335-7/8		263 (300-7/8)			
LNAV/VNAV DA	370-7/8		298 (300-7/8)			
LNAV MDA	460-1 388 (400-1)		460-1 1/8 388 (400-1 1/8)			
CIRCLING	640-1 560 (600-1)	720-1 640 (700-1)	860-2 1/4 780 (800-2 1/4)		1000-3 920 (1000-3)	

NE-2, 22 FEB 2024 to 21 MAR 2024

NE-2, 22 FEB 2024 to 21 MAR 2024

WAAS CH <b>81924</b> <b>W19A</b>	APP CRS <b>193°</b>	Rwy Idg TDZE Apt Elev	<b>5516</b> <b>78</b> <b>80</b>
--	------------------------	-----------------------------	---------------------------------------

# RNAV (GPS) RWY 19

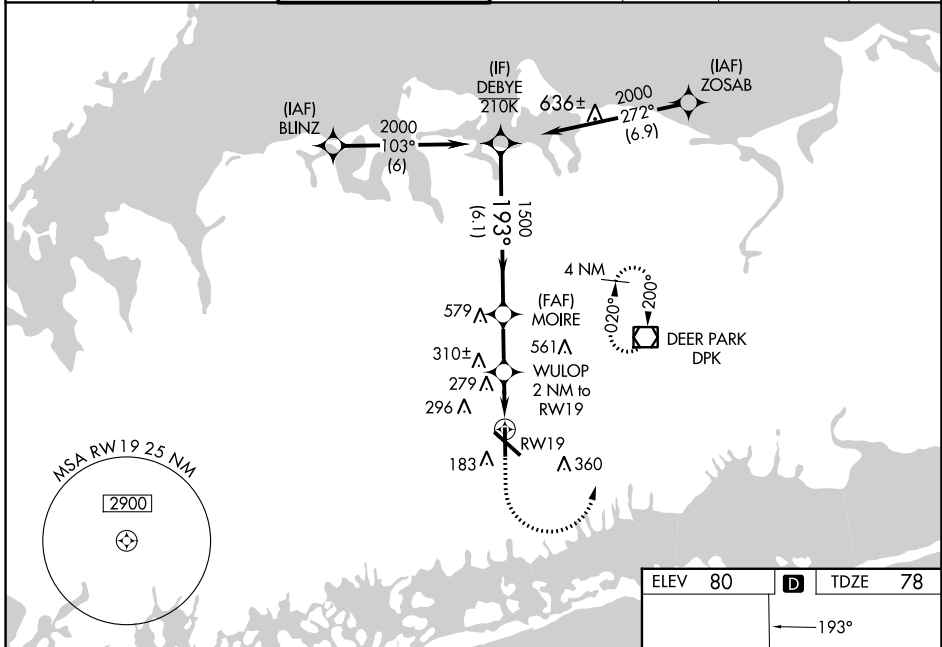
REPUBLIC (F/RG)

RNP APCH - GPS.

**⚠** Helicopter visibility reduction below  $\frac{3}{4}$  SM NA.  
For uncompensated Baro-VNAV systems, LNAV/VNAV NA below -12°C or above 54°C.

**MISSED APPROACH:**  
(Do not exceed 210K until DPK VOR/DME)  
Climb to 2000 then climbing left turn to 3000 direct DPK VOR/DME and hold, continue climb-in-hold to 3000.

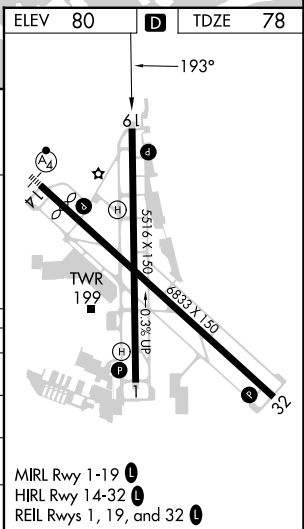
ATIS <b>126.65</b>	NEW YORK APP CON <b>128.125 269.0</b>	REPUBLIC TOWER ★ <b>118.8</b> (CTAF) <b>0 279.65</b>	GND CON <b>121.6 269.6</b>	CLNC DEL <b>128.25</b>	CLNC DEL <b>128.25</b> (When twr closed)	UNICOM <b>122.95</b>
-----------------------	--	---	-------------------------------	---------------------------	--	-------------------------



NE-2, 22 FEB 2024 to 21 MAR 2024

NE-2, 22 FEB 2024 to 21 MAR 2024

	DEBYE	MOIRE	WULOP 2 NM to RWY 19	RWY 19
	2000	1500	800	
	193°	1500	1.2 NM to RWY 19	
	GP 3.20° TCH 41			
	6.1 NM	2.1 NM	0.8 NM	1.2 NM
CATEGORY	A	B	C	D
LPV DA		328- $\frac{3}{4}$	250 (300- $\frac{3}{4}$ )	
LNAV/VNAV DA		504-1 $\frac{1}{4}$	426 (500-1 $\frac{1}{2}$ )	
LNAV MDA	520-1	442 (500-1)	520-1 $\frac{3}{8}$	442 (500-1 $\frac{3}{8}$ )
CIRCLING	640-1 560 (600-1)	720-1 640 (700-1)	860-2 $\frac{1}{4}$ 780 (800-2 $\frac{1}{4}$ )	1000-3 920 (1000-3)



MIRL Rwy 1-19 **Ⓛ**  
HIRL Rwy 14-32 **Ⓛ**  
REIL Rwy 1, 19, and 32 **Ⓛ**

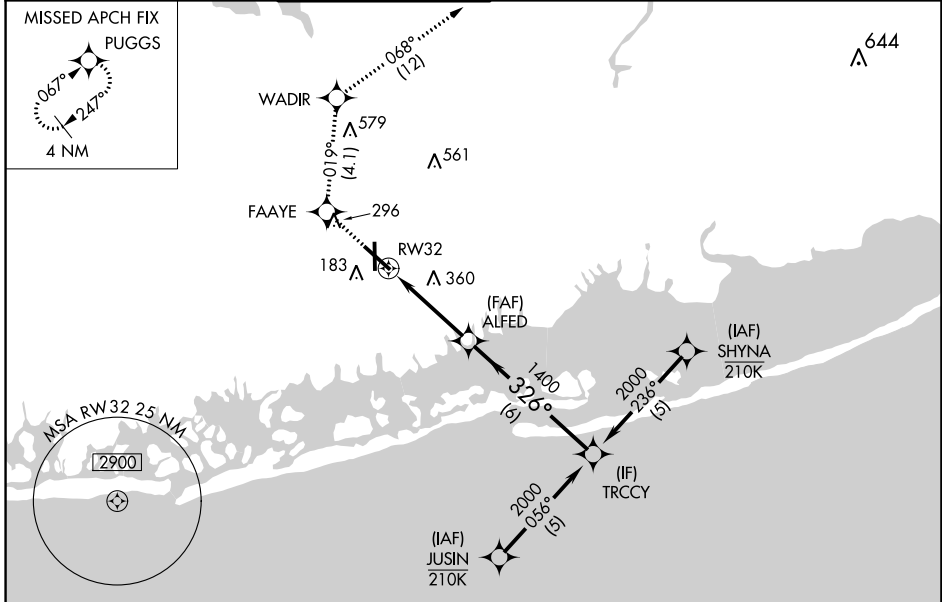
WAAS CH <b>70715</b> <b>W32A</b>	APP CRS <b>326°</b>	Rwy Idg TDZE Apt Elev	<b>6833</b> <b>68</b> <b>80</b>
--	------------------------	-----------------------------	---------------------------------------

# RNAV (GPS) RWY 32

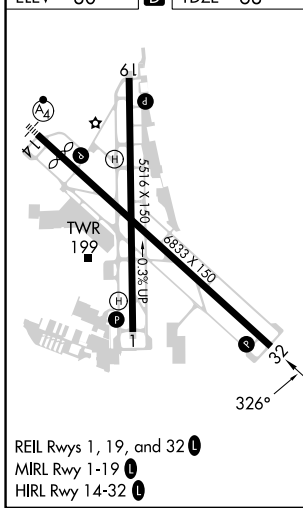
REPUBLIC (F'R'G)

RNP APCH - GPS.	MISSED APPROACH: (Do not exceed 190K until WADIR) Climb to 2000 direct FAAYE then on track 019° to WADIR and on track 068° to PUGGS and hold.
<p>▼ For uncompensated Baro-VNAV systems, LNAV/VNAV NA below -12°C or above 54°C.                  ▲ Rwy 32 helicopter visibility reduction below ¾ SM NA.</p>	

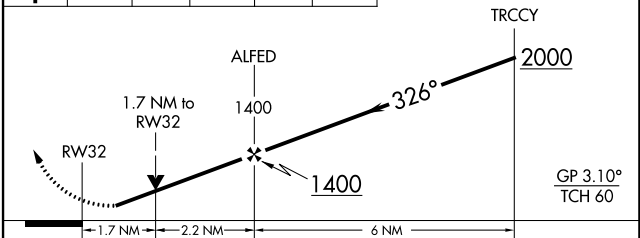
ATIS <b>126.65</b>	NEW YORK APP CON <b>128.125 269.0</b>	REPUBLIC TOWER ★ <b>118.8</b> (CTAF) <b>0 279.65</b>	GND CON <b>121.6 269.6</b>	CLNC DEL <b>128.25</b>	CLNC DEL <b>128.25</b> (When twr closed)	UNICOM <b>122.95</b>
-----------------------	--	---	-------------------------------	---------------------------	--	-------------------------



ELEV 80	<b>D</b>	TDZE 68
---------	----------	---------



2000	FAAYE	tr 019°	WADIR	tr 068°	PUGGS	VGSJ and RNAV glidepath not coincident (VGSJ Angle 3.00/TCH 53).
------	-------	---------	-------	---------	-------	--



CATEGORY	A	B	C	D
LPV DA		328-¾	260 (300-¾)	
LNAV/VNAV DA		355-⅞	287 (300-⅞)	
LNAV MDA	660-1	592 (600-1)	660-1¾	592 (600-1¾)
<b>C</b> CIRCLING	660-1 580 (600-1)	720-1 640 (700-1)	860-2¼ 780 (800-2¼)	1000-3 920 (1000-3)

NE-2, 22 FEB 2024 to 21 MAR 2024

NE-2, 22 FEB 2024 to 21 MAR 2024

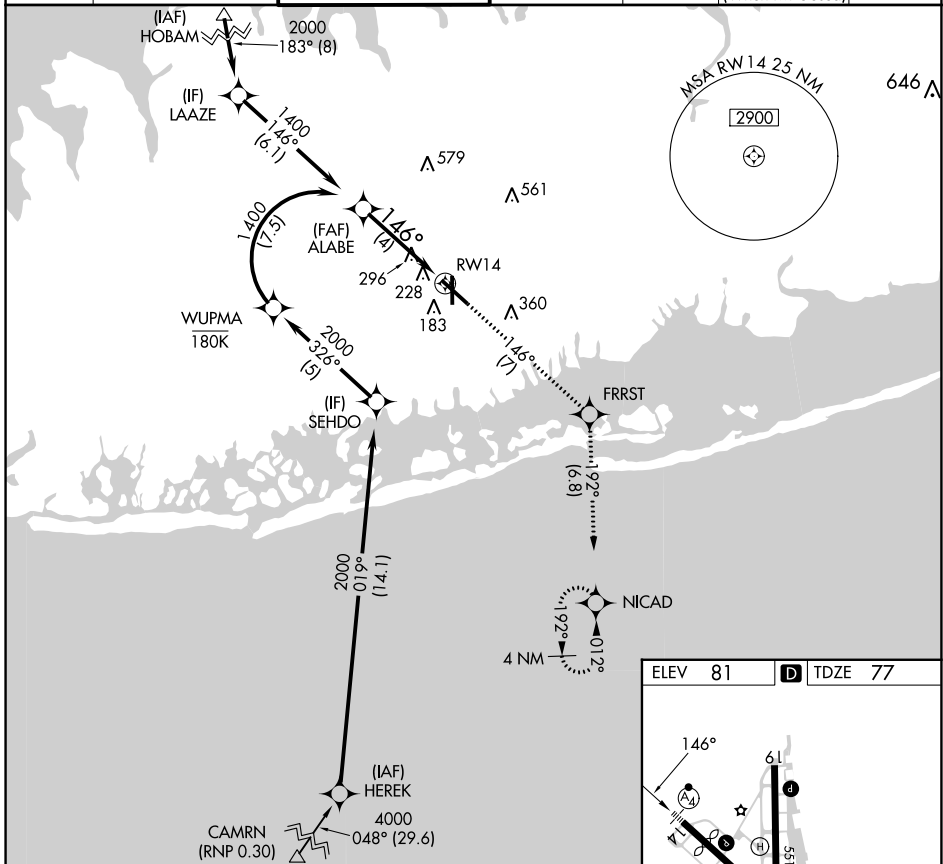
APP CRS	Rwy Idg	<b>6157</b>
<b>146°</b>	TDZE	<b>77</b>
	Apt Elev	<b>81</b>

# RNAV (RNP) Z RWY 14

REPUBLIC (F'RG)

RNP AR APCH. RF required from HEREK.		MALSF	MISSED APPROACH: Climb to 2000 on track 146° to FRRST and on track 192° to NICAD and hold.
For uncompensated Baro-VNAV systems, procedure NA below -12°C or above 48°C. For inop ALS, increase all Cats visibility to 1 3/8 SM.			

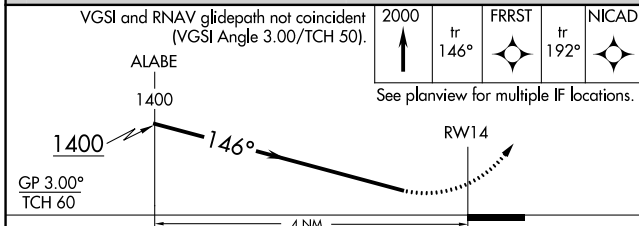
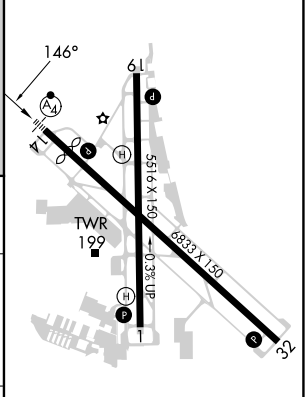
ATIS	NEW YORK APP CON	REPUBLIC TOWER ★	GND CON	CLNC DEL	CLNC DEL	UNICOM
<b>126.65</b>	<b>128.125 269.0</b>	<b>118.8 (CTAF) 0 279.65</b>	<b>121.6 269.6</b>	<b>128.25</b>	<b>128.25</b> (When twr closed)	<b>122.95</b>



NE-2, 22 FEB 2024 to 21 MAR 2024

NE-2, 22 FEB 2024 to 21 MAR 2024

ELEV	81	D	TDZE	77
------	----	---	------	----



CATEGORY	A	B	C	D
RNP 0.30 DA		502-7/8	425 (500-7/8)	

**AUTHORIZATION REQUIRED**

- MIRL Rwy 1-19
- HIRL Rwy 14-32
- REIL Rwy 1, 19, and 32

WAAS CH <b>69612</b> <b>W14A</b>	APP CRS <b>146°</b>	Rwy Idg TDZE Apt Elev	<b>6157</b> <b>77</b> <b>80</b>
--	------------------------	-----------------------------	---------------------------------------

# RNAV (GPS) Y RWY 14

REPUBLIC (F/RG)

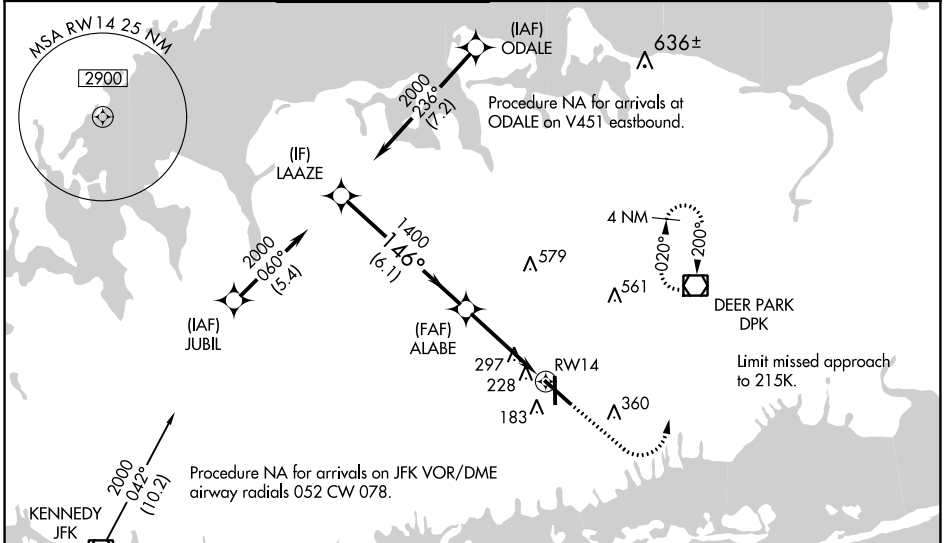
RNP APCH.

**⚠** Inop table does not apply to LPV. For uncompensated Baro-VNAV systems, LNAV/VNAV NA below -15°C or above 54°C. For inop MALSR: increase LNAV/VNAV all Cats visibility to 1; LNAV Cats A/B visibility to 1; LNAV Cats C/D visibility to 1½. Baro-VNAV and VDP NA when using Islip altimeter setting. When local altimeter setting not received, use Islip altimeter setting; increase LPV DA to 314 feet; increase LNAV/VNAV DA to 426 feet; increase all MDAs 40 feet and visibility Cat C ¼ SM.

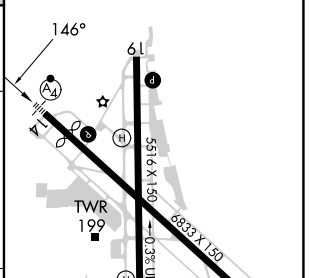
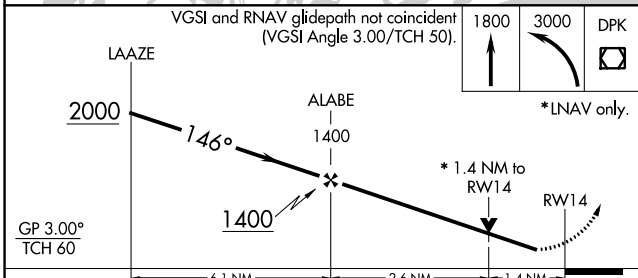
**MALSR**  
⚠

**MISSED APPROACH:**  
Climb to 1800 then climbing left turn to 3000 direct DPK VOR/DME and hold, continue climb-in-hold to 3000.

ATIS <b>126.65</b>	NEW YORK APP CON <b>128.125 269.0</b>	REPUBLIC TOWER ★ <b>118.8</b> (CTAF) <b>0 279.65</b>	GND CON <b>121.6 269.6</b>	CLNC DEL <b>128.25</b>	CLNC DEL <b>128.25</b> (When twr closed)	UNICOM <b>122.95</b>
-----------------------	--	---	-------------------------------	---------------------------	--	-------------------------



ELEV 80	<b>D</b> TDZE 77
---------	------------------



CATEGORY	A	B	C	D
LPV DA		277-¾	200 (200-¾)	
LNAV/VNAV DA		389-¾	312 (400-¾)	
LNAV MDA	560-¾ 483 (500-¾)		560-1 483 (500-1)	
CIRCLING	640-1 560 (600-1)	720-1 640 (700-1)	860-2 ¼ 780 (800-2 ¼)	1000-3 920 (1000-3)

REIL Rwy 1, 19, and 32 **Ⓛ**  
MIRL Rwy 1-19 **Ⓛ**  
HIRL Rwy 14-32 **Ⓛ**

NE-2, 22 FEB 2024 to 21 MAR 2024

NE-2, 22 FEB 2024 to 21 MAR 2024