

WAAS CH 50318 W13A	APP CRS 131°	Rwy Idg TDZE 14 Apt Elev 16	5152
--	------------------------	---	-------------

RNAV (GPS) RWY 13

FERNANDINA BEACH MUNI (FHB)

RNP APCH.

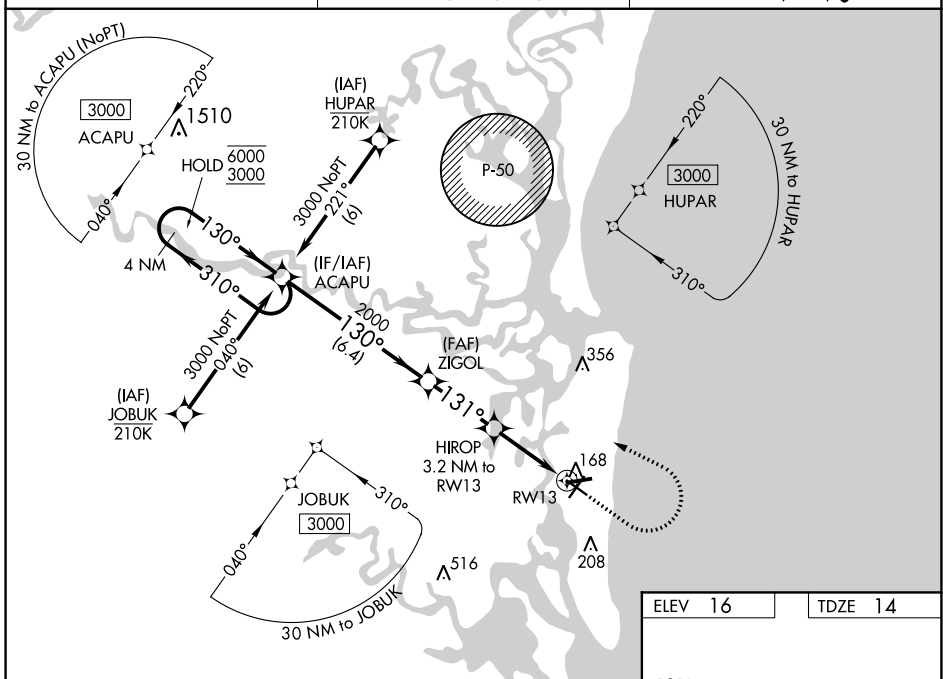
⚠ Circling Rwy 9, 22, 27 NA at night. Rwy 13 helicopter visibility reduction below 3/4 SM NA. For uncompensated Baro-VNAV systems, LNAV/VNAV NA below -15°C or above 54°C.

MISSED APPROACH: Climb to 500 then climbing left turn to 3000 direct ACAPU and hold, continue climb-in-hold to 3000.

AWOS-3
118.075

JACKSONVILLE APP CON
127.0 292.15

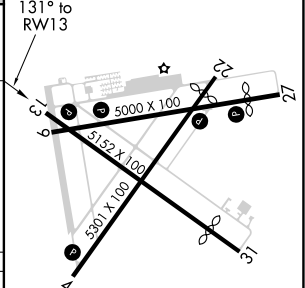
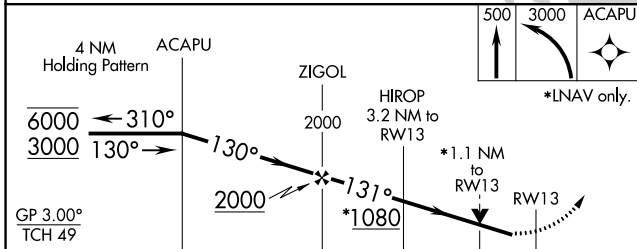
UNICOM
122.7 (CTAF) 0



SE-3, 19 MAY 2022 to 16 JUN 2022

SE-3, 19 MAY 2022 to 16 JUN 2022

ELEV 16	TDZE 14
---------	---------



CATEGORY	A	B	C	D
LPV DA		288-1	274 (300-1)	
LNAV/VNAV DA		443-1 3/8	429 (500-1 3/8)	
LNAV MDA	420-1	406 (500-1)	420-1 1/8	406 (500-1 1/8)
C CIRCLING	480-1	464 (500-1)	580-1 1/2	580-2
			564 (600-1 1/2)	564 (600-2)

REIL Rwy 4 and 13 **0**
MIRL Rwy 4-22, 9-27 and 13-31 **0**

APP CRS	Rwy Idg	4861
221°	TDZE	16
	Apt Elev	16

RNAV (GPS) RWY 22

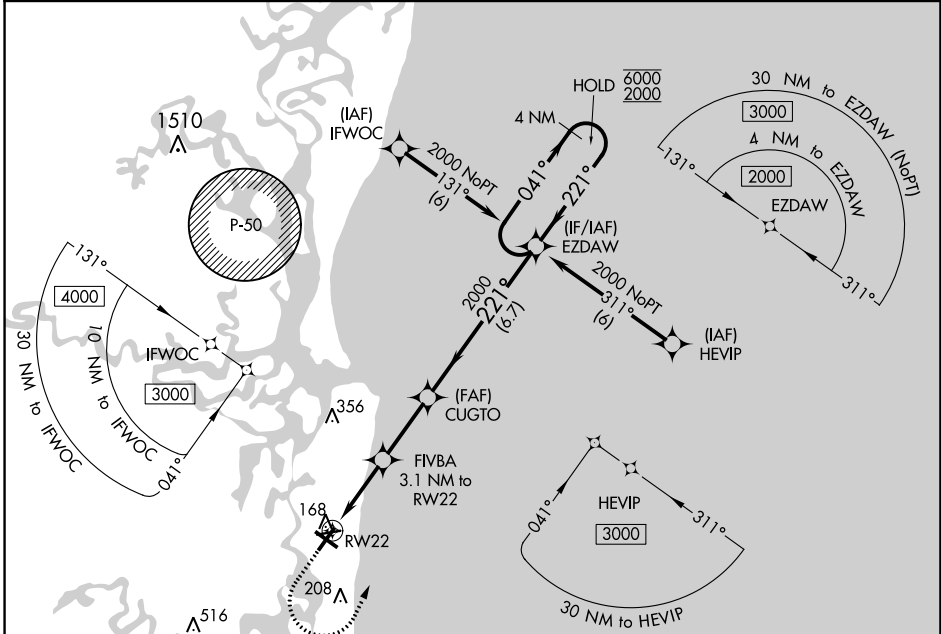
FERNANDINA BEACH MUNI (FHB)

RNP APCH.

- ▼** Circling Rwy 9, 22, 27 NA at night. Rwy 22 helicopter visibility reduction below 1 SM NA. Straight-in Rwy 22 NA at night.
- ▲**

MISSED APPROACH: Climb to 600 then climbing left turn to 2000 direct EZDAW and hold.

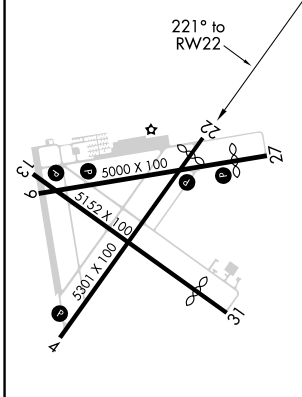
AWOS-3 118.075	JACKSONVILLE APP CON 127.0 292.15	UNICOM 122.7 (CTAF) 0
--------------------------	---	---------------------------------



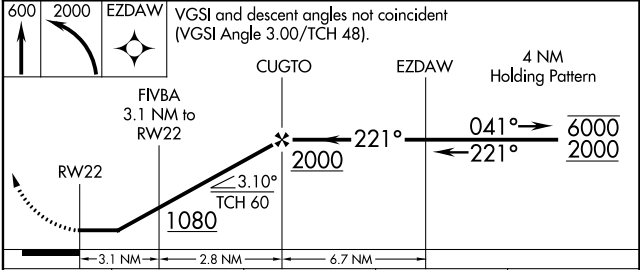
SE-3, 19 MAY 2022 to 16 JUN 2022

SE-3, 19 MAY 2022 to 16 JUN 2022

ELEV 16	TDZE 16
---------	---------



600 2000 EZDAW VGSI and descent angles not coincident (VGSI Angle 3.00/TCH 48).



CATEGORY	A	B	C	D
LNAV MDA	420-1	404 (500-1)	420-1 1/8	404 (500-1 1/8)
C CIRCLING	480-1	464 (500-1)	580-1 1/2	580-2
			564 (600-1 1/2)	564 (600-2)

WAAS CH 90343 W04A	APP CRS 041°	Rwy Idg TDZE 15 Apt Elev 16	5301
--	------------------------	---	-------------

RNAV (GPS) RWY 4

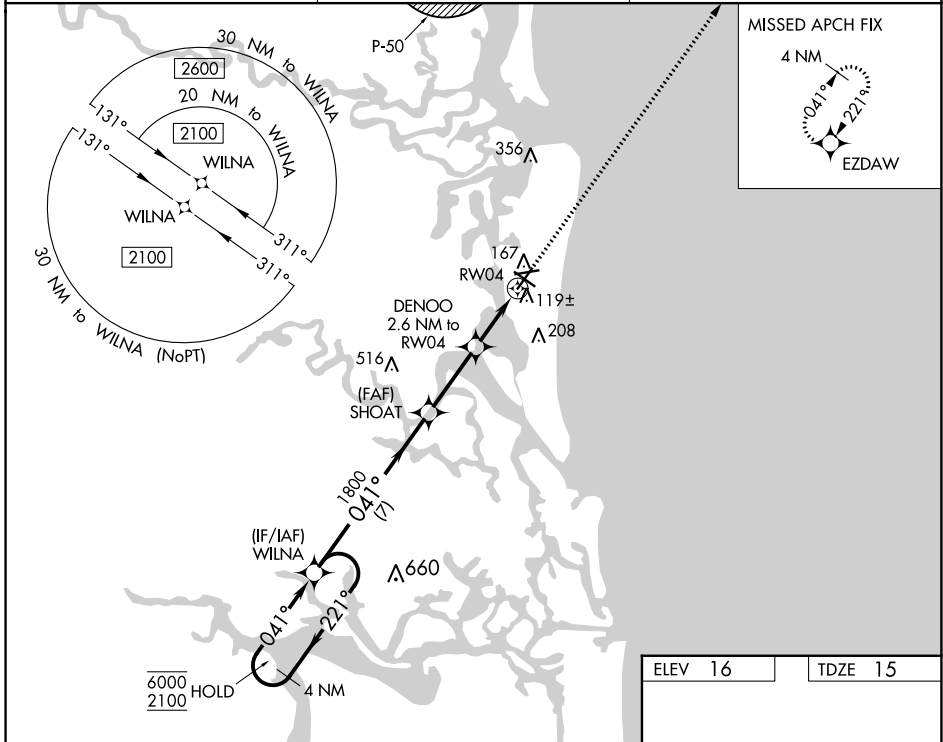
FERNANDINA BEACH MUNI (FHB)

RNP APCH.

- V** Circling Rwy 9, 22, 27 NA at night. Rwy 4 helicopter visibility reduction below 3/4 SM NA.
- A** For uncompensated Baro-VNAV systems, LNAV/VNAV NA below -15°C or above 54°C.

MISSED APPROACH: Climb to 2000 direct EZDAW and hold.

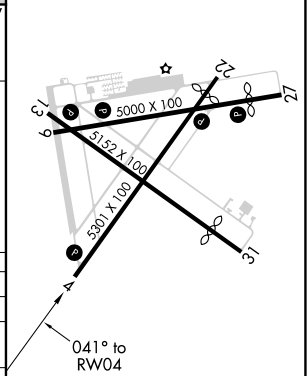
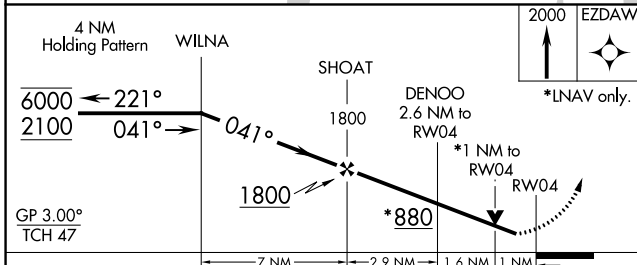
AWOS-3 118.075	JACKSONVILLE APP CON 127.0 292.15	UNICOM 122.7 (CTAF) U
--------------------------	---	--



SE-3, 19 MAY 2022 to 16 JUN 2022

SE-3, 19 MAY 2022 to 16 JUN 2022

ELEV 16	TDZE 15
----------------	----------------



CATEGORY	A	B	C	D
LPV DA		265-3/4	250 (300-3/4)	
LNAV/VNAV DA		280-7/8	265 (300-7/8)	
LNAV MDA		380-1	365 (400-1)	
C CIRCLING	480-1	464 (500-1)	580-1 1/2 564 (600-1 1/2)	580-2 564 (600-2)

REIL Rwy 4 and 13 **U**
MIRL Rwy 4-22, 9-27 and 13-31 **U**