

WAAS CH <b>61019</b> <b>W02A</b>	APP CRS <b>026°</b>	Rwy Idg TDZE <b>930</b> Apt Elev <b>946</b>	<b>3998</b>
--	------------------------	---	-------------

# RNAV (GPS) RWY 2

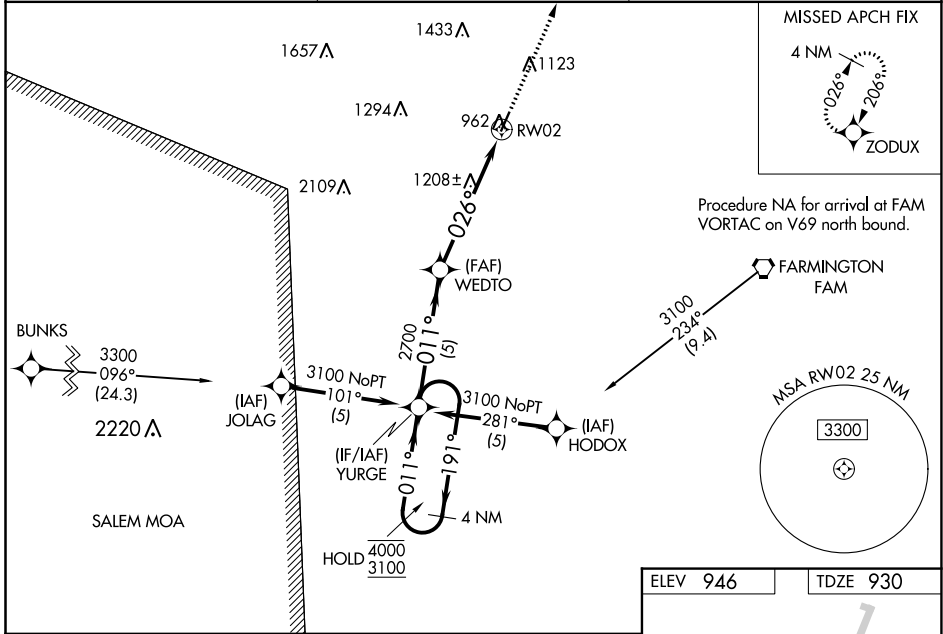
FARMINGTON RGNL (F.A.M)

RNP APCH - GPS.

**⚠** Circling Rwy 20 NA at night. Baro-VNAV and VDP NA when using Sparta altimeter setting. Rwy 2 helicopter visibility reduction below  $\frac{3}{4}$  SM NA. For uncompensated Baro-VNAV systems, LNAV/VNAV NA below  $-16^{\circ}\text{C}$  or above  $54^{\circ}\text{C}$ . When local altimeter setting not received, use Sparta altimeter setting and increase LPV DA to 1334 feet and all visibilities  $\frac{1}{8}$  SM, increase LNAV/VNAV DA to 1395 feet and all visibilities  $\frac{3}{8}$  SM; increase all MDAs 160 feet.

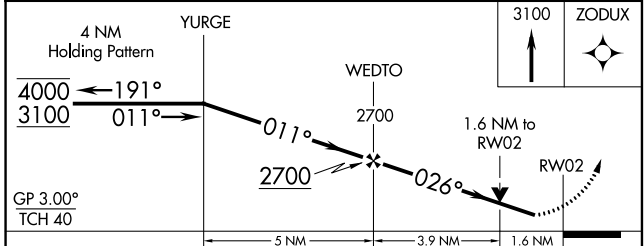
MISSED APPROACH: Climb to 3100 direct ZODUX and hold.

AWOS-3PT <b>119.275</b>	KANSAS CITY CENTER <b>127.475 346.275</b>	UNICOM <b>122.8 (CTAF) 0</b>
----------------------------	--	---------------------------------

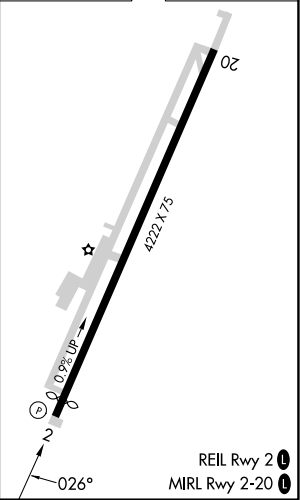


NC-3, 22 FEB 2024 to 21 MAR 2024

NC-3, 22 FEB 2024 to 21 MAR 2024



ELEV 946	TDZE 930
----------	----------



CATEGORY	A	B	C	D
LPV DA	1180-1	250 (300-1)		NA
LNAV/VNAV DA	1241-1	311 (300-1)		NA
LNAV MDA	1460-1	530 (600-1)		NA
<b>C</b> CIRCLING	1460-1 514 (600-1)	1500-1 554 (600-1)		NA

APP CRS	Rwy Idg	<b>4222</b>
<b>206°</b>	TDZE	<b>946</b>
	Apt Elev	<b>946</b>

# RNAV (GPS) RWY 20

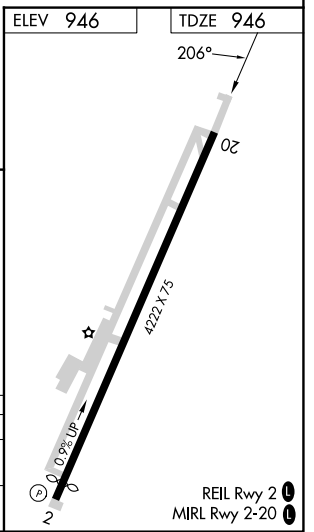
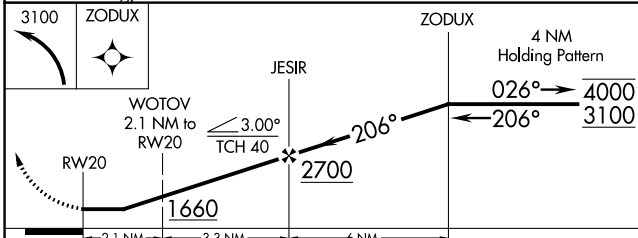
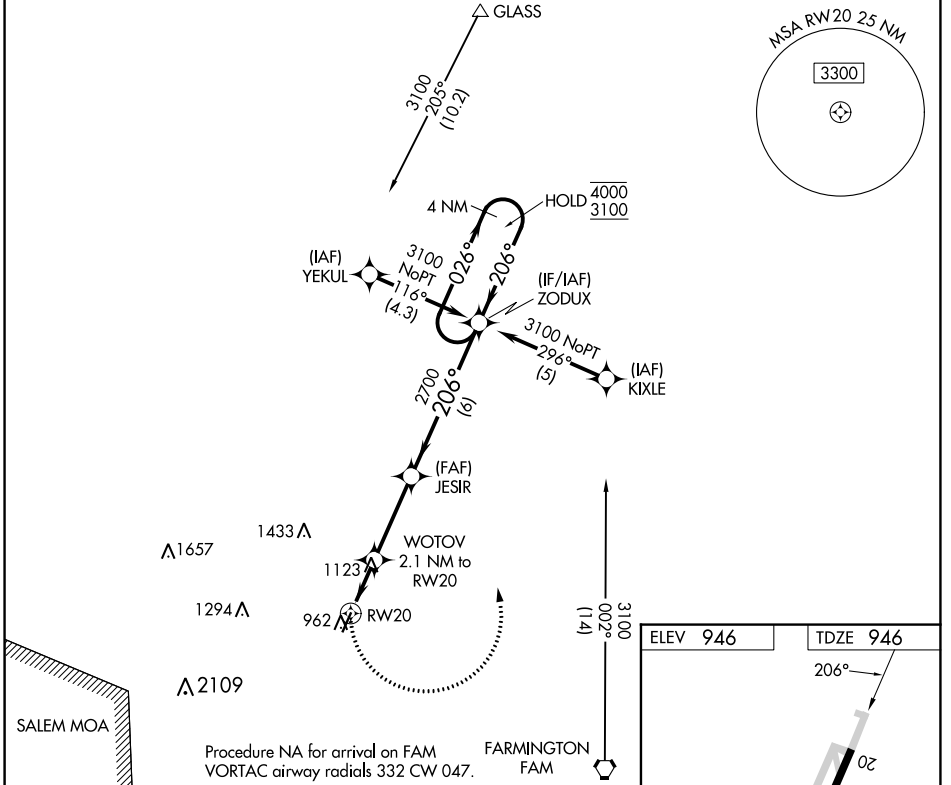
FARMINGTON RGNL (FAM)

RNP APCH - GPS.

**▼** Rwy 20 helicopter visibility reduction below 1 SM NA. Straight-in Rwy 20 NA at night, Circling Rwy 20 NA at night. When local altimeter setting not received, use Sparta altimeter setting and increase all MDAs 160 feet.

MISSED APPROACH: Climbing left turn to 3100 direct ZODUX and hold.

AWOS-3PT <b>119.275</b>	KANSAS CITY CENTER <b>127.475 346.275</b>	UNICOM <b>122.8 (CTAF)</b>
----------------------------	--	-------------------------------



CATEGORY	A	B	C	D
LNVA MDA	1380-1	434 (500-1)		NA
<b>C</b> CIRCLING	1460-1 514 (600-1)	1500-1 554 (600-1)		NA

NC-3, 22 FEB 2024 to 21 MAR 2024

NC-3, 22 FEB 2024 to 21 MAR 2024

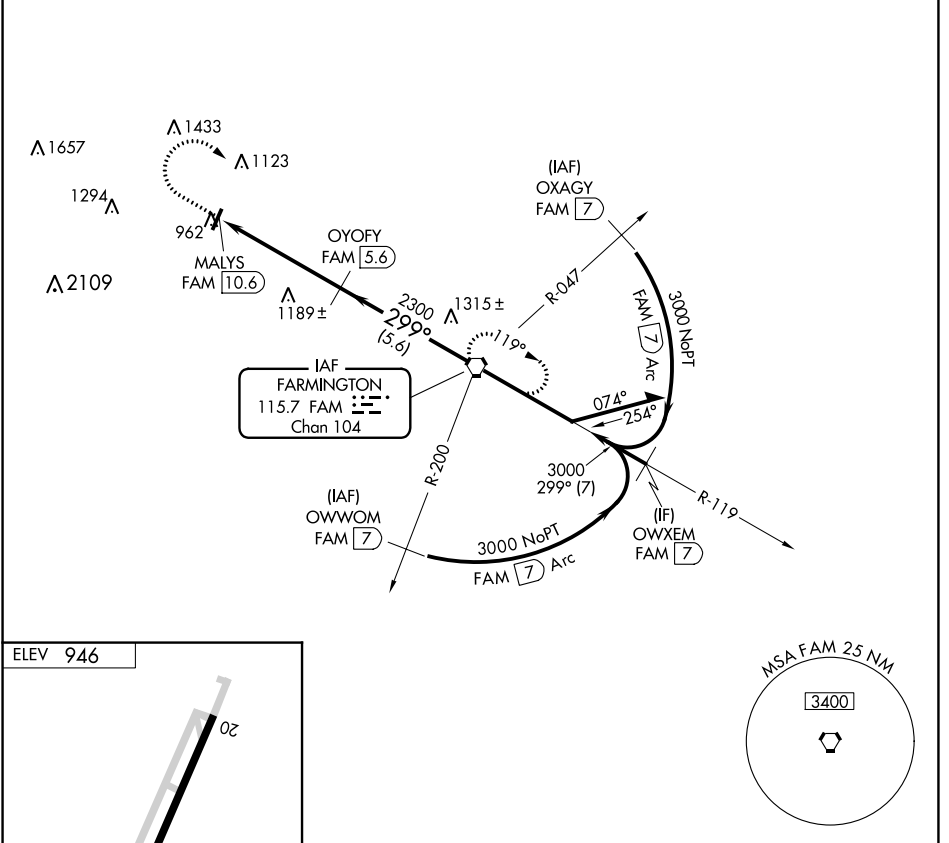
VORTAC FAM <b>115.7</b> Chan <b>104</b>	APP CRS <b>299°</b>	Rwy Idg TDZE Apt Elev <b>N/A</b> <b>N/A</b> <b>946</b>
---	------------------------	---

# VOR/DME-A

FARMINGTON RGNL (FAM)

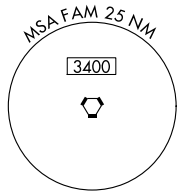
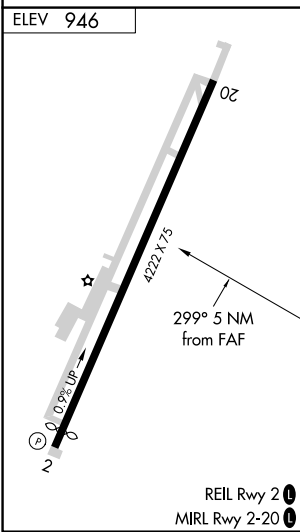
<b>NA</b> Circling to Rwy 20 NA at night. When local altimeter setting not received, use Sparta altimeter setting and increase all MDA 160 feet and Cat A visibility ¼ mile.	MISSED APPROACH: Climb to 2200 then climbing right turn to 3000 direct FAM VORTAC and hold.
--	---

AWOS-3PT <b>119.275</b>	KANSAS CITY CENTER <b>127.475 346.275</b>	UNICOM <b>122.8 (CTAF) 0</b>
----------------------------	--	---------------------------------



NC-3, 22 FEB 2024 to 21 MAR 2024

NC-3, 22 FEB 2024 to 21 MAR 2024



	2200	3000	FAM	
	↑	↷	⬠	
	FAM VORTAC			Remain within 10 NM
	MALYS FAM [10.6]	OYOFY FAM [5.6]	2300	119°
	3000	3000	299°	3000
	5 NM		5.6 NM	
CATEGORY	A	B	C	D
CIRCLING	1720-1 774 (800-1)	1720-1¼ 774 (800-1¼)	NA	