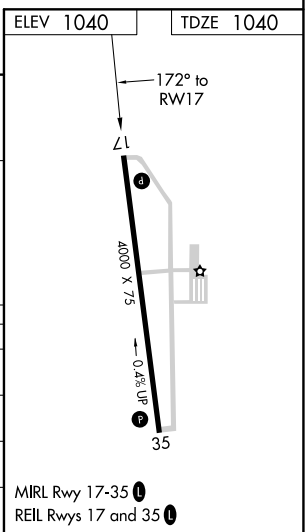
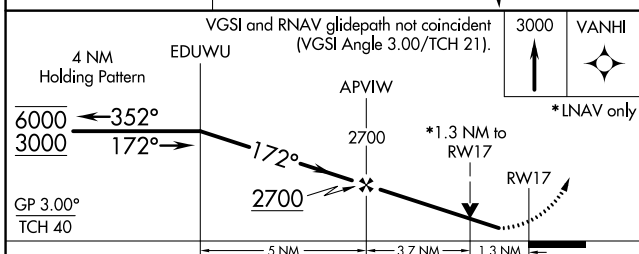
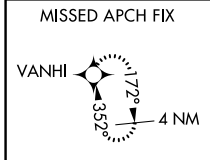
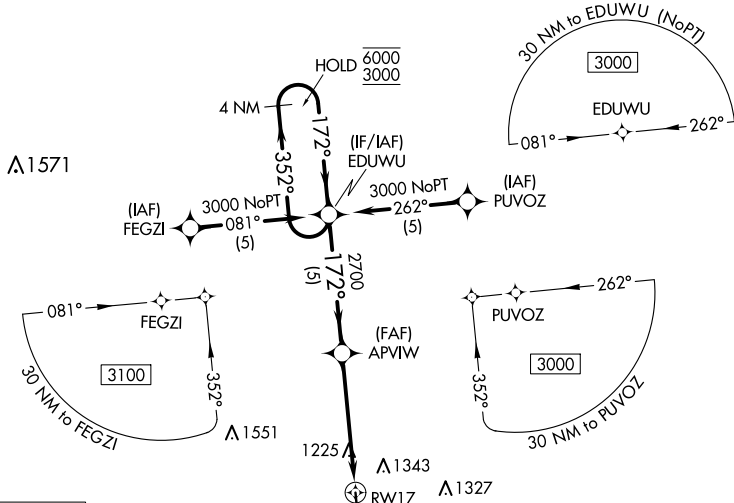


WAAS CH <b>82017</b> <b>W17A</b>	APP CRS <b>172°</b>	Rwy ldg TDZE Apt Elev	<b>4000</b> <b>1040</b> <b>1040</b>
--	------------------------	-----------------------------	---

# RNAV (GPS) RWY 17

CAMERON MEML (EZZ)

RNP APCH.		MISSED APPROACH: Climb to 3000 direct VANHI and hold.	
<p>▼ Rwy 17 helicopter visibility reduction below 3/4 SM NA. For uncompensated Baro-VNAV systems, LNAV/VNAV NA below -17°C or above 54°C.</p>			
AWOS-3 <b>121.05</b>	KANSAS CITY APP CON <b>118.4 307.35</b>	CLNC DEL <b>121.6</b>	UNICOM <b>122.8 (CTAF) ①</b>



CATEGORY	A	B	C	D
LPV DA	1290-3/4	250 (300-3/4)		NA
LNAV/VNAV DA	1518-13/8	478 (500-13/8)		NA
LNAV MDA	1480-1	440 (500-1)		NA
CIRCLING	1660-1	620 (700-1)		NA

NC-3, 27 JAN 2022 to 24 FEB 2022

NC-3, 27 JAN 2022 to 24 FEB 2022

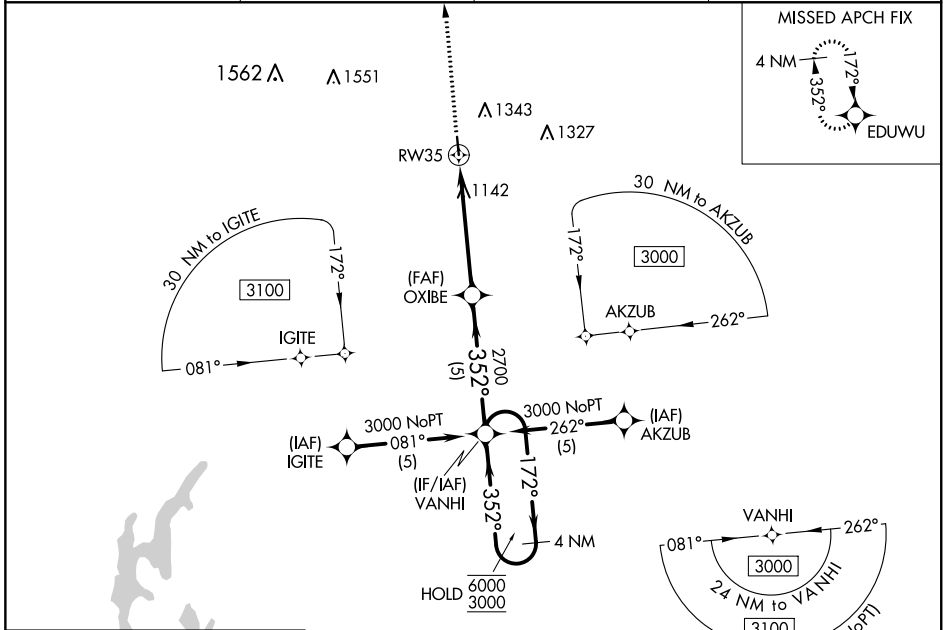
WAAS CH <b>77717</b> <b>W35A</b>	APP CRS <b>352°</b>	Rwy Idg TDZE Apt Elev	<b>4000</b> <b>1035</b> <b>1040</b>
--	------------------------	-----------------------------	---

# RNAV (GPS) RWY 35

CAMERON MEML (EZZ)

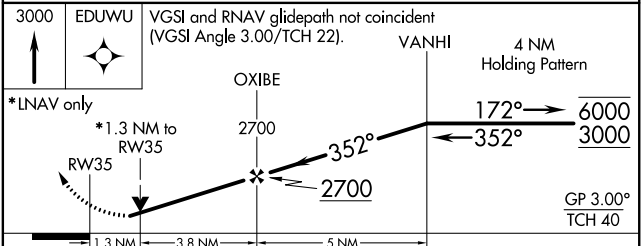
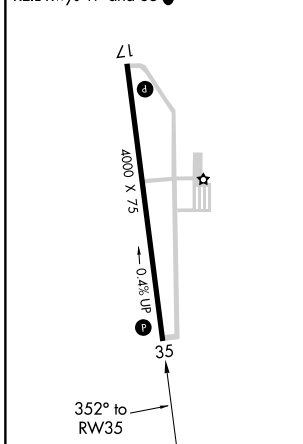
RNP APCH.	MISSED APPROACH: Climb to 3000 direct EDUWU and hold.
-----------	---

AWOS-3 <b>121.05</b>	KANSAS CITY APP CON <b>118.4 307.35</b>	CLNC DEL <b>121.6</b>	UNICOM <b>122.8 (CTAF)</b>
-------------------------	--	--------------------------	-------------------------------



ELEV 1040	TDZE 1035
-----------	-----------

MIRL Rwy 17-35  
REIL Rwy 17 and 35



CATEGORY	A	B	C	D
LPV DA	1285-3/4	250 (300-3/4)		NA
LNAV/VNAV DA	1310-7/8	275 (300-7/8)		NA
LNAV MDA	1460-1	425 (500-1)		NA
CIRCLING	1660-1	620 (700-1)		NA

NC-3, 27 JAN 2022 to 24 FEB 2022

NC-3, 27 JAN 2022 to 24 FEB 2022