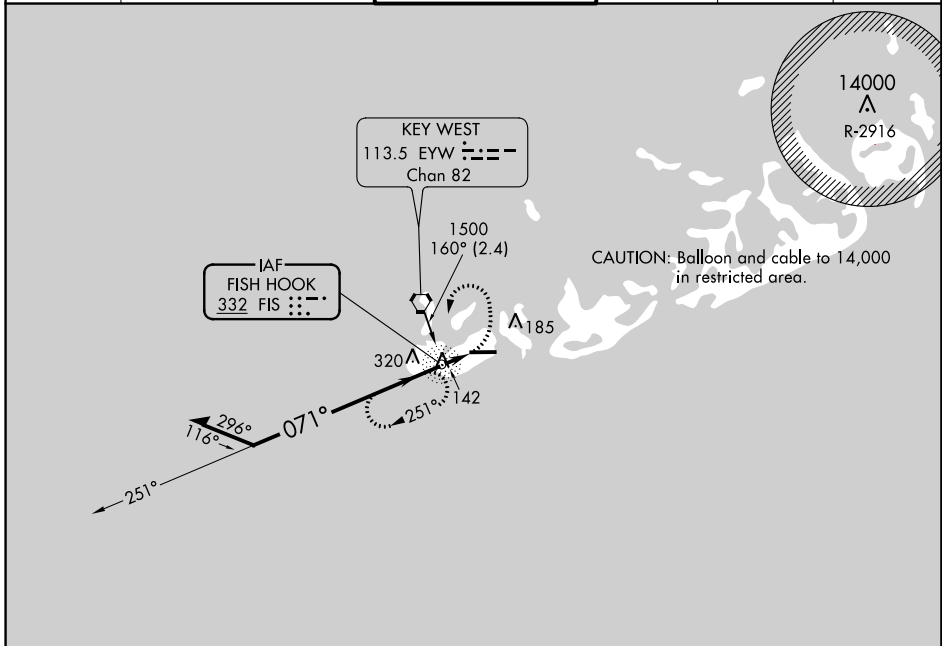


NDB FIS 332	APP CRS 071°	Rwy ldg TDZE Apt Elev	N/A N/A 3
-----------------------	------------------------	--------------------------	--------------------------------------

NDB-A
KEY WEST INTL (EYW)

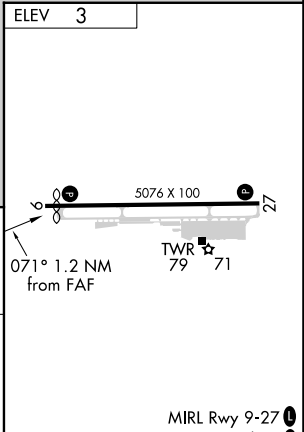
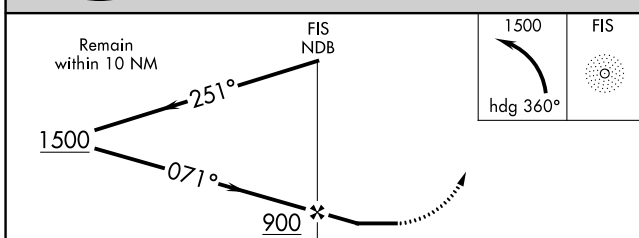
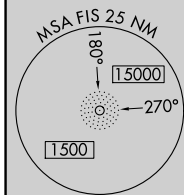
ASR	MISSED APPROACH: Climbing left turn to 1500 via heading 360°, then left turn direct FIS NDB and hold.				
------------	---	--	--	--	--

ATIS 119.675	NAVY KEY WEST APP CON * 124.025 313.7	KEY WEST TOWER * 118.2 (CTAF) 0 257.8	GND CON 121.9	CLNC DEL 121.9	UNICOM 122.95
------------------------	---	---	-------------------------	--------------------------	-------------------------



SE-3, 22 FEB 2024 to 21 MAR 2024

SE-3, 22 FEB 2024 to 21 MAR 2024



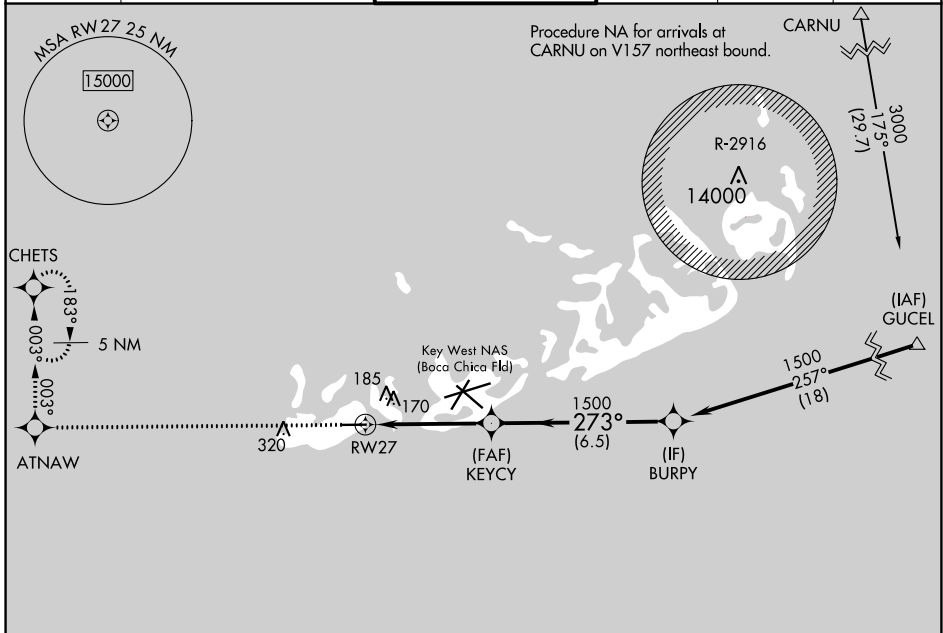
CATEGORY	A	B	C	D	FAF to MAP 1.2 NM					
CIRCLING	500-1	497 (500-1)	620-1¾ 617 (700-1¾)	620-2 617 (700-2)	Knots	60	90	120	150	180
					Min:Sec	1:12	0:48	0:36	0:29	0:24

WAAS CH 82100 W27A	APP CRS 273°	Rwy Idg TDZE Apt Elev	4801 3 3
--	------------------------	-----------------------------	-------------------------------------

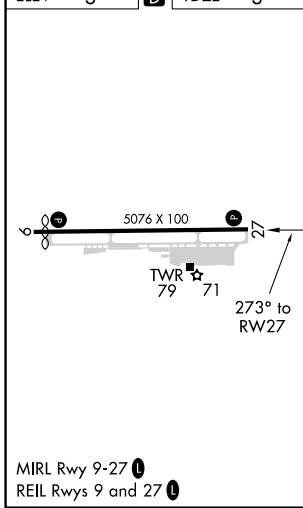
RNAV (GPS) RWY 27

KEY WEST INTL (EYW)

RNP APCH-GPS.		MISSED APPROACH: Climb to 2400 direct ATNAW and via 003° track to CHETS and hold.		
When local altimeter setting not received, use Key West NAS (Boca Chica Fld) altimeter setting. Rwy 27 helicopter visibility reduction below 3/4 SM NA.				
ATIS 119.675	NAVY KEY WEST APP CON * 124.025 313.7	KEY WEST TOWER * 118.2(CTAF) 0 257.8	GND CON 121.9	CLNC DEL 121.9
		UNICOM 122.95		



ELEV 3	D	TDZE 3
--------	----------	--------



2400	ATNAW	CHETS	VGSi and RNAV glidepath not coincident (VGSi Angle 3.00/TCH 34).	
↑	003° tr	KEYCY	BURPY	Procedure Turn NA
RW27		1500	273°	1500
4.5 NM		6.5 NM		GP 3.00° TCH 45
CATEGORY	A	B	C	D
LPV DA	253-1		250 (300-1)	
LNAV MDA	460-1	457 (500-1)	460-1 3/8	457 (500-1 3/8)
CIRCLING	500-1	497 (500-1)	620-1 3/4 617 (700-1 3/4)	620-2 617 (700-2)

SE-3, 22 FEB 2024 to 21 MAR 2024

SE-3, 22 FEB 2024 to 21 MAR 2024

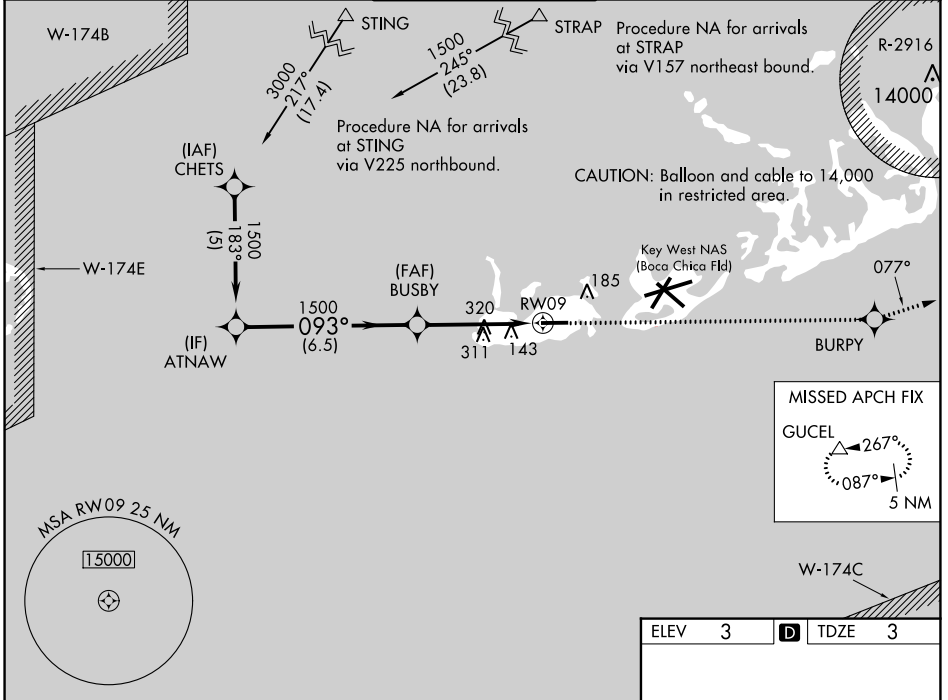
WAAS CH 40405 W09A	APP CRS 093°	Rwy Idg 4801 TDZE 3 Apt Elev 3
--	------------------------	---

RNAV (GPS) RWY 9

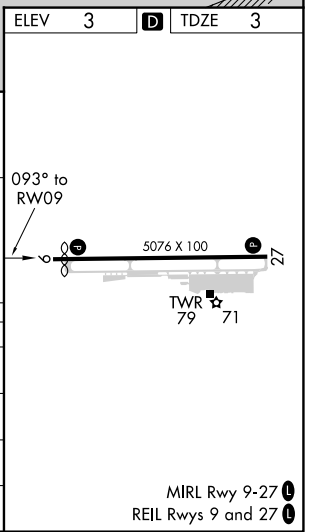
KEY WEST INTL (EYW)

RNP APCH-GPS.		<p>For uncompensated Baro-VNAV systems, LNAV/VNAV NA below -15°C or above 48°C. Rwy 9 helicopter visibility reduction below 3/4 SM NA. If local altimeter setting not received, use Key West NAS (Boca Chica Fld) altimeter setting.</p>			<p>MISSED APPROACH: Climb to 3000 direct BURPY and via 077° track to GUCEL and hold.</p>	
---------------	--	--	--	--	--	--

ATIS 119.675	NAVY KEY WEST APP CON * 124.025 313.7	KEY WEST TOWER * 118.2 (CTAF) 257.8	GND CON 121.9	CLNC DEL 121.9	UNICOM 122.95
------------------------	---	---	-------------------------	--------------------------	-------------------------



Procedure Turn NA	ATNAW	BUSBY	3000	BURPY	077° tr	GUCEL
GP 3.00° TCH 35	1500	1500				
	6.5 NM	4.5 NM				
CATEGORY	A	B	C	D		
LPV DA	253-1		250 (300-1)			
LNAV/VNAV DA	425-1½		422 (500-1½)			
LNAV MDA	580-1	577 (600-1)	580-1½	577 (600-1½)	580-1¾	577 (600-1¾)
CIRCLING	580-1	577 (600-1)	620-1¾	617 (700-1¾)	620-2	617 (700-2)



SE-3, 22 FEB 2024 to 21 MAR 2024

SE-3, 22 FEB 2024 to 21 MAR 2024